


# Coronavirus disease 2019 (COVID-19)


Data as reported by the CCSA mid-day press briefing Ministry of Public Health


22 January 2021

## WHO Thailand Situation Report

  
**13,104**  
**(+309)**  
Confirmed

  
**71**  
**(+0)**  
Deaths


  
**2,809**  
Hospitalized

  
**10,224**  
**(+382)**  
Recovered

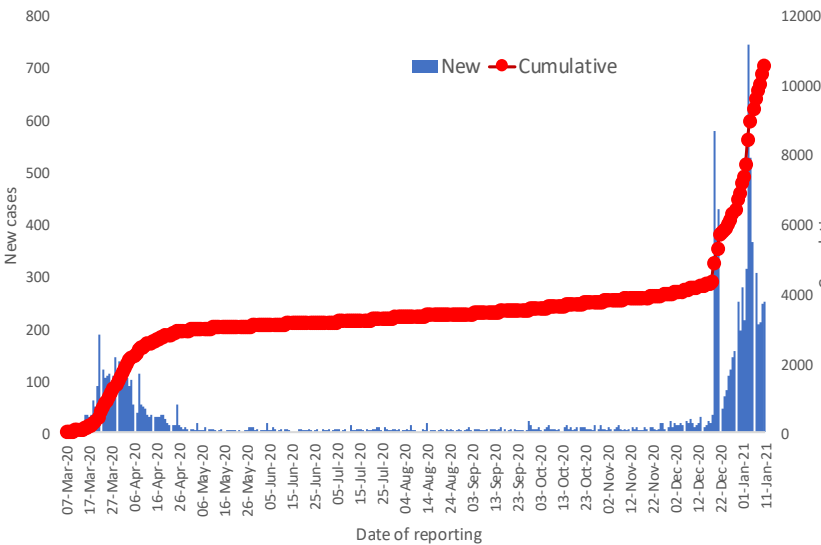


**THAILAND**  
**SITUATION**  
**UPDATE**  
**No. 132**

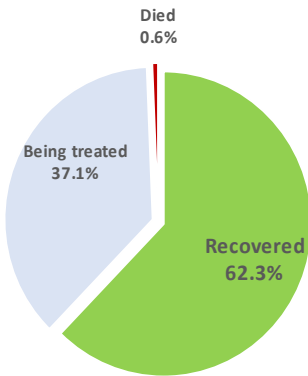
### SPOTLIGHT

- 309 new cases (2%  from yesterday) of laboratory-confirmed COVID-19 were announced by the Ministry of Public Health of Thailand (MoPH), bringing the total number of cases to date to 13,104. **No new deaths were reported today.**
- Of these, 78% (10,224) have recovered, 0.5% (71) have died, and 21% (2,809) are still receiving treatment or in isolation.
- The 309 laboratory-confirmed cases reported today include:
  - 12 individuals who arrived recently in Thailand and were diagnosed in quarantine facilities.
  - 80 cases linked to occupational risk, visiting crowded places or had contact with confirmed cases, including Samut Sakhon (49), Bangkok (8), Tak (5), Pathum Thani (6), Nonthaburi (1), Ayutthaya (2), Kanchanaburi (2), Phetchaburi (2), Ratchaburi (3), and Samut Prakan (2).
  - The remaining 217 cases reported today were migrant workers (201) and Thais (16) who were identified in relation to the event in Samut Sakhon through contact tracing and active case finding in Samut Sakhon (212) and Bangkok (5). This brings the cumulative total in this group to 4,384 cases.
- Locally transmitted COVID-19 cases have now been reported in 63 provinces. No additional provinces reported new cases today.**
- The 10 provinces reporting more than 50 cumulative cases are Samut Sakhon (5,036), Chonburi (648), Bangkok (648), Rayong (572), Samut Prakan (321), Chanthaburi (220), Nonthaburi (159), Ang Thong (109), Pathum Thani (85), and Nakhon Pathom (77).

New and cumulative COVID-19 cases in Thailand,  
by date of reporting



Treatment outcomes of  
COVID-19 patients (n=10547)



Source: MoPH, 11 Jan 2021

## UPDATE FROM THE CCSA

- **Active case finding in Bangkok**

- ◇ Emphasis to be placed around five districts including at four factories that reported confirmed cases.

## ADVICE FOR THE PUBLIC

### Relaxation of measures

The Bangkok Metropolitan Administration (BMA) has approved the reopening of 13 businesses with strict precautions effective today. This includes gaming centers, game and internet shops, elderly care centers, amulet markets and centers, beauty and tattoo salons, dance academies, health and wellness establishments and traditional massage shops, martial arts gyms/schools, banquet halls, fitness centers, bowling alleys, skating and rollerblade parks, and sports fields (except boxing stadiums and horse racing tracks).

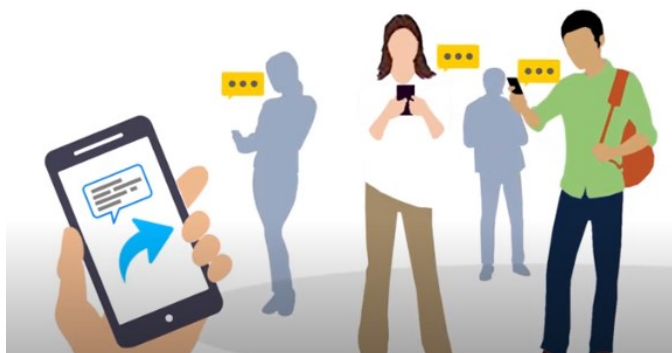
Businesses in Chiang Mai, Chai Nat and Nakhon Ratchasima have started to reopen following an improvement of the situation.

## EXPLAINER

An infodemic is an excessive amount of information about a problem that allows rumours to spread faster than a virus. We all play an important role in protecting ourselves from infodemic and by sharing trustworthy information. Here's how:

### Source of COVID-19 knowledge and information

The World Health Organization Thailand has been working with the Ministry of Public Health to provide knowledge and information on COVID-19 to members of the public in Thai and English languages. Materials include infographics, short video clips, situation reports which can be accessed via the WHO [Thailand's website \(www.who.int\)](http://www.who.int), [Facebook](#) and [Twitter](#).



## WHAT THE WHO IS DOING TO SUPPORT THAILAND

WHO Thailand supports the Royal Thai Government through the Ministry of Public Health, sharing information on developments, guidelines and scientific updates. WHO also supports the wider UN response, including working with key partners to support migrant populations in Thailand. WHO also provides information and advice to staff of the UN system in Thailand.



### USEFUL LINKS

The Thailand COVID19 situation report is available in Thai and English, please [visit](#)  
For regular updates on WHO's response in Thailand, please [visit](#)  
For global figures and technical advice from WHO, please [visit](#)

**World Health Organization Country Office for Thailand**  
4th Fl., Permanent Secretary Bldg.3 Ministry of Public Health,  
Nonthaburi Thailand, 11000

Media queries [sethawebmaster@who.int](mailto:sethawebmaster@who.int) and [kanpirom@who.int](mailto:kanpirom@who.int)



**For latest updates and resources, please visit:**

[www.who.int/thailand](http://www.who.int/thailand) [@WHO Thailand](https://twitter.com/WHO_Thailand) [WHO Thailand](https://www.facebook.com/WHO_Thailand) [WHO Thailand](https://www.youtube.com/WHO_Thailand)