


Coronavirus disease 2019 (COVID-19)


Data as reported by the CCSA mid-day press briefing


23 January 2021

WHO Thailand Situation Report


13,302
(+198)
Confirmed


72
(+1)
Deaths


2,782
Hospitalized


10,448
(+224)
Recovered

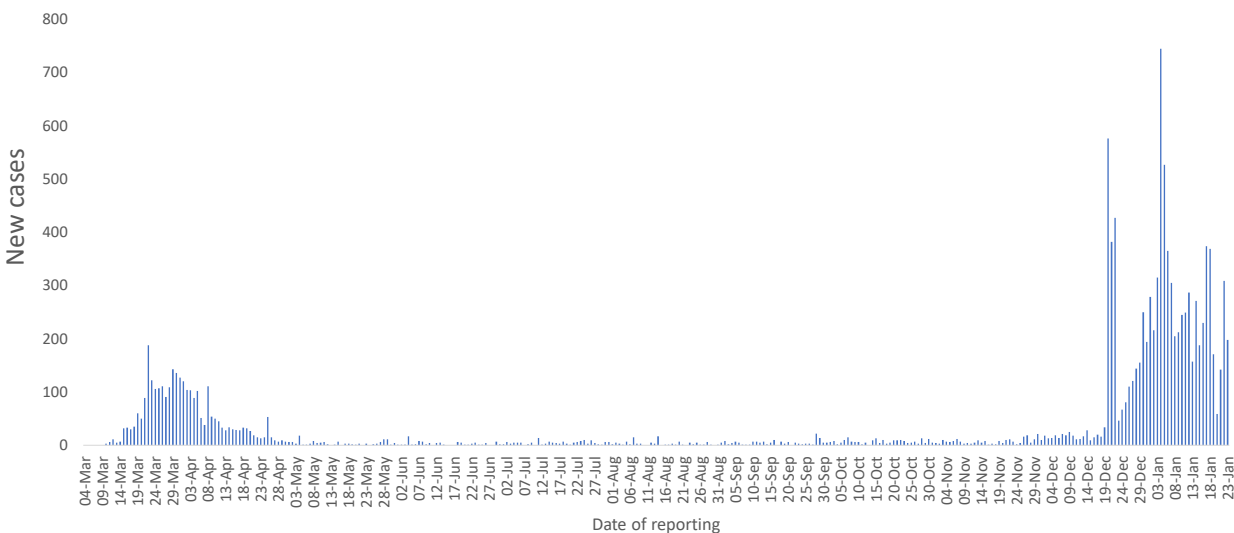


**THAILAND
SITUATION
UPDATE**
No. 133

SPOTLIGHT

- 198 new cases (36% down from yesterday) of laboratory-confirmed COVID-19 were announced by the Ministry of Public Health, (MoPH) Thailand, bringing the total number of reported cases to 13,302. **One new death was reported today**
- Of these, 78.5 % (10,448) have recovered, 0.5% (72) have died, and 21% (2,782) are receiving treatment or are in isolation.
- The 198 laboratory-confirmed cases reported today include:
 - ◆ 18 individuals who arrived recently in Thailand and were diagnosed in quarantine facilities.
 - ◆ 69 cases linked to occupational risk, visiting crowded places or contact with confirmed cases, including Samut Sakhon (56), Bangkok (5), Ang Thong (1), Samut Songkhram (5), Samut Prakan (1) and Rayong (1).
 - ◆ The remaining 111 cases reported today were migrant workers (109) and Thais (2) who were identified in relation to the event in Samut Sakhon through contact tracing and active case finding in Samut Sakhon (107) and Bangkok (4). This brings the cumulative total in this group to 4,495 cases.
- **Locally transmitted COVID-19 cases have now been reported in 63 provinces. No additional provinces reported new cases today.**
- The 10 provinces reporting more than 50 cumulative cases are Samut Sakhon (5,184), Bangkok (657), Chonburi (648), Rayong (573), Samut Prakan (322), Chanthaburi (220), Nonthaburi (159), Ang Thong (110), Pathum Thani (85), and Nakhon Pathom (77).
- Between 15th December 2020 and 23rd January 2021, 9,065 confirmed cases have been reported, of which 3,987 were classified as local transmission, 4,495 were detected through active case finding and 583 were in individuals who entered Thailand from other countries. At present, 6,508 have recovered, 2,545 are receiving treatment, and 12 have died.

New COVID-19 cases in Thailand, by date of reporting



Source: MoPH, 23 Jan 2021

UPDATE FROM THE CCSA

• Vaccines

- ♦ The Faculty of Medicine, Chulalongkorn University is developing a COVID-19 vaccine 'ChulaCOV 19' using the same technology employed with the Pfizer-BioNTech and Moderna vaccines, i.e. with messenger RNA (mRNA), that enables the body to produce a protein that triggers an immune response to the virus.
- ♦ The first phase of the clinical trial of this vaccine will be carried out among volunteers aged between 18 and 75 in April; results are expected to be available in June. Subsequent phases of clinical trials have also been planned and manufacturing of the vaccine is expected to begin by the end of this year.

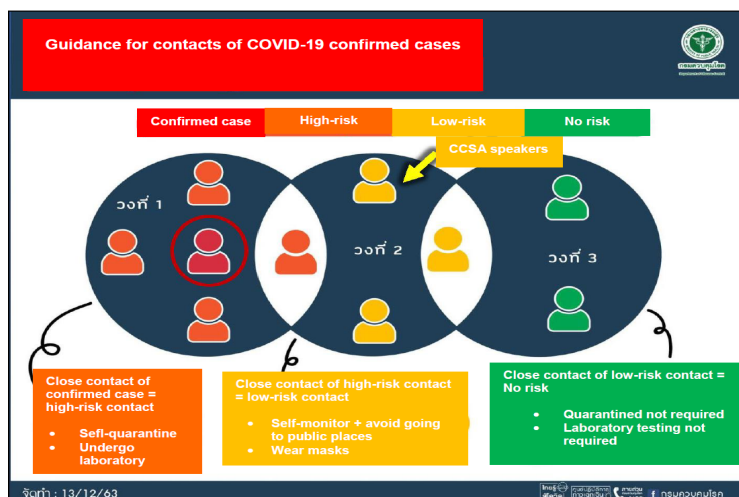
• Information for migrant workers

- ♦ The International Organization for Migration (IOM) has launched a new mobile app 'MOVE' which provides information about COVID-19 precautions and relevant information in Myanmar, Lao, Khmer as well as in Thai language. The app can be downloaded by scanning the QR code or visit the [IOM Thailand Twitter](#) for more information.



• Contact tracing

- ♦ Contact tracing of the NBT channel news anchor who tested positive yesterday identified CCSA moderators from the NBT Channel as high-risk contacts and CCSA speakers as low-risk contacts. A snapshot of the guidance for contacts of COVID-19 confirmed cases is illustrated in the chart on the right.



EXPLAINER: the 'EUL'

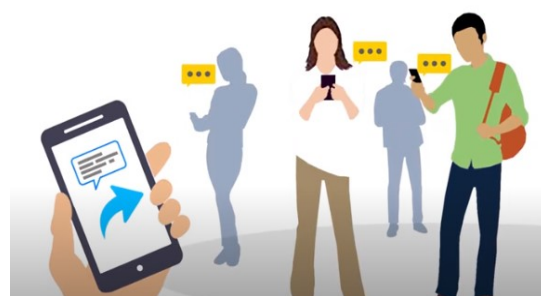
The WHO 'Emergency Use Listing' Procedure (EUL) is a risk-based procedure for assessing and listing unlicensed vaccines, therapeutics and in vitro diagnostics with the ultimate aim of expediting the availability of these products to people affected by a public health emergency.

GETTING VACCINES, MEDICINES & TESTS READY FOR EMERGENCY USE

การเตรียมพร้อม วัคซีน ยา และชุดตรวจ สำหรับ
ใช้ในภาวะฉุกเฉิน

WHO: A SOURCE OF COVID-19 KNOWLEDGE AND INFORMATION

The World Health Organization Thailand has been working with the Ministry of Public Health to provide knowledge and information on COVID-19 to members of the public in Thai and English languages. Materials include infographics, short video clips, situation reports which can be accessed via the [WHO Thailand's website](#), [Facebook](#) and [Twitter](#).



WHAT THE WHO IS DOING TO SUPPORT THAILAND

WHO Thailand supports the Royal Thai Government through the Ministry of Public Health, sharing information on developments, guidelines and scientific updates. WHO also supports the wider UN response, including working with key partners to support migrant populations in Thailand. WHO also provides information and advice to staff of the UN system in Thailand.



USEFUL LINKS

The Thailand COVID19 situation report is available in Thai and English, please [visit](#)
For regular updates on WHO's response in Thailand, please [visit](#)
For global figures and technical advice from WHO, please [visit](#)

World Health Organization Country Office for Thailand
4th Fl., Permanent Secretary Bldg.3 Ministry of Public Health,
Nonthaburi Thailand, 11000

Media queries sethawebmaster@who.int and kanpirom@who.int



For latest updates and resources, please visit:

www.who.int/thailand [@WHO Thailand](https://twitter.com/WHO_Thailand) [f WHO Thailand](https://facebook.com/WHO_Thailand) [v WHO Thailand](https://youtube.com/WHO_Thailand)