

Coronavirus disease 2019 (COVID-19)

Data as reported by the CCSA mid-day press briefing

24 January 2021

WHO Thailand Situation Report



13,500
(+198)
Confirmed



73
(+1)
Deaths



2,860
Hospitalized



10,567
(+119)
Recovered



THAILAND
SITUATION
UPDATE
No. 134

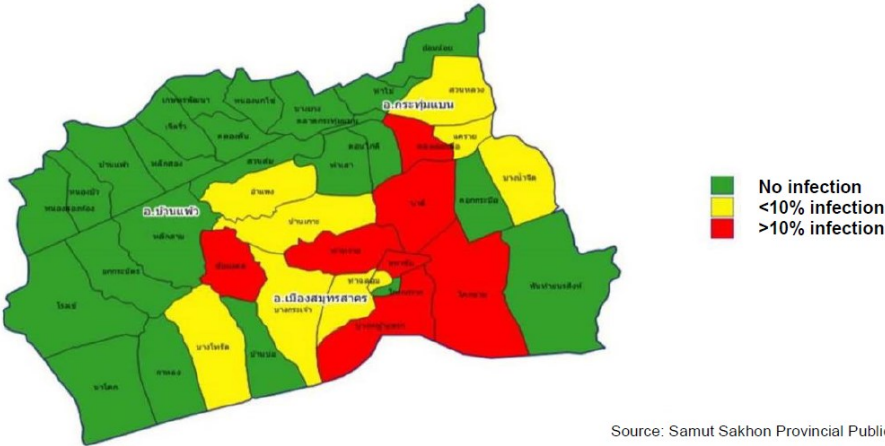
SPOTLIGHT

- 198 new cases (the same number as yesterday) of laboratory-confirmed COVID-19 were announced by the Ministry of Public Health, (MoPH), bringing the total number of reported cases to 13,500. **One new death was reported today**
- Of these, 78.3 % (10,567) have recovered, 0.5% (73) have died, and 21.2% (2,860) are receiving treatment or are in isolation.
- The 198 laboratory-confirmed cases reported today include:
 - 6 individuals who arrived recently in Thailand and were diagnosed in quarantine facilities, and one person who entered the country through the Thailand / Myanmar land border.
 - 118 cases linked to occupational risk, visiting crowded places or contact with confirmed cases, including Samut Sakhon (76), Bangkok (21), Nonthaburi (1), Samut Songkhram (7), Samut Prakan (12) and Ratchaburi (1).
 - The remaining 73 cases reported today were migrant workers (70) and Thais (3) who were identified in relation to the event in Samut Sakhon through contact tracing and active case finding in Samut Sakhon (72) and Rayong (1). This brings the cumulative total in this group to 4,568 cases.
- Locally transmitted COVID-19 cases have now been reported in 63 provinces. No additional provinces reported new cases today.**
- The 10 provinces reporting more than 50 cumulative cases are Samut Sakhon (5,332), Bangkok (678), Chonburi (648), Rayong (574), Samut Prakan (334), Chanthaburi (220), Nonthaburi (160), Ang Thong (110), Pathum Thani (85), and Nakhon Pathom (77).
- Between 15th December 2020 and 23rd January 2021, 9,065 confirmed cases have been reported, of which 3,987 were classified as local transmission, 4,495 were detected through active case finding and 583 were in individuals who entered Thai-

UPDATE FROM THE CCSA: Active case finding in Samut Sakhon

- Active case finding in Samut Sakhon has been intensified during the past week. With support from private and university teaching hospitals, to date almost 70,000 individuals have tested, of which 5,332 (approximately 7%) tested positive.
- These data have been used to map infections in three different zones: (see picture below).
- Samut Sakhon aims to complete active case finding in factories, markets and worker dormitories by the end of January.
- The Province has ensured readiness of hospitals, field hospitals and factory quarantine systems. Collection of data from 'at risk' districts will continue into the first week of February.

Zoning in Samut Sakhon Province



Source: Samut Sakhon Provincial Public Health Office

UPDATE FROM THE CCSA

• Relaxation of measures

- ♦ All provinces will enhance surveillance and preventive measures in the coming week to support government decisions on relaxation of measures at a national level. Full cooperation of Members of the public is requested.
- ♦ As the disease situation has become stable, authorities in Phuket, Ayutthaya and Nakhon Ratchasima have relaxed entry and quarantine measures for travellers from areas outside of the highly controlled provinces.

• Information about COVID-19

- ♦ The Ministry of Public Health has issued guidelines for food delivery businesses to prevent the spread of COVID-19. The guidelines provide advice for both delivery staff and customers.
- ♦ Information about different types of COVID-19 laboratory testing, including the RT-PCR test commonly used in Thailand, is available on WHO Thailand website, Facebook and Twitter.

• Immigration regulations

- ♦ According to the Ministerial Regulation dated 25th December 2020 regarding prohibited diseases for aliens entering the Kingdom; effective 25th January 2021 all persons entering Thailand must be free from COVID-19. New arrivals must present a certificate of entry (COE) issued by a Thai Embassy certifying the individual is COVID-19 free. For foreigners who reside in the Kingdom, a COVID-free certificate is not required when re-newing work permits.

Tip sheets: Promote the six protective behaviours to break the chain of COVID-19 transmission

There are six **protective behaviours** that everyone can follow to help slow the transmission of COVID-19.



Clean hands regularly



Prevent droplets from spreading



Keep at least 1 metre apart



Limit time spent in enclosed or crowded places



Clean frequently touched objects and surfaces



Respond appropriately if experiencing COVID-like symptoms

As a leader in your community, you play a critical role in enabling those for whom you are responsible to practise the six protective behaviours. You can do this by:

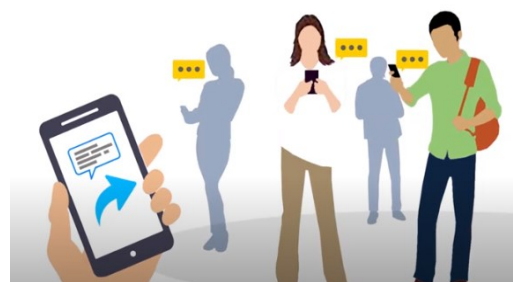
- **Communicating the ongoing risk of COVID-19** and the importance of continuing to carry out these behaviours.
- **Acting as a role model** by demonstrating these behaviours yourself and recognizing others who do too.
- **Supporting everyone you are responsible for**, including vulnerable and marginalized populations, to practise these behaviours.

This series provides ideas and suggestions for different kinds of leaders of **simple actions** to take to protect those for whom you are responsible. Take a look at these ideas and think through what works in your local context and in line with the advice of your local authorities.



WHO: A SOURCE OF COVID-19 KNOWLEDGE AND INFORMATION

The World Health Organization Thailand has been working with the Ministry of Public Health to provide knowledge and information on COVID-19 to members of the public in Thai and English languages. Materials include infographics, short video clips, situation reports which can be accessed via the [WHO Thailand's website](#), [Facebook](#) and [Twitter](#).



WHAT THE WHO IS DOING TO SUPPORT THAILAND

WHO Thailand supports the Royal Thai Government through the Ministry of Public Health, sharing information on developments, guidelines and scientific updates. WHO also supports the wider UN response, including working with key partners to support migrant populations in Thailand. WHO also provides information and advice to staff of the UN system in Thailand.



USEFUL LINKS

The Thailand COVID19 situation report is available in Thai and English, please [visit](#)
For regular updates on WHO's response in Thailand, please [visit](#)
For global figures and technical advice from WHO, please [visit](#)

World Health Organization Country Office for Thailand
4th Fl., Permanent Secretary Bldg.3 Ministry of Public Health,
Nonthaburi Thailand, 11000

Media queries sethawebmaster@who.int and kanpirom@who.int



World Health
Organization
Thailand

For latest updates and resources, please visit:

www.who.int/thailand [@WHO Thailand](#) [WHO Thailand](#) [WHO Thailand](#)