


Coronavirus disease 2019 (COVID-19)


Data as reported by the CCSA mid-day press briefing

25 January 2021

WHO Thailand Situation Report


13,687
(+187)
Confirmed


75
(+2)
Deaths


2,950
Hospitalized


10,662
(+95)
Recovered

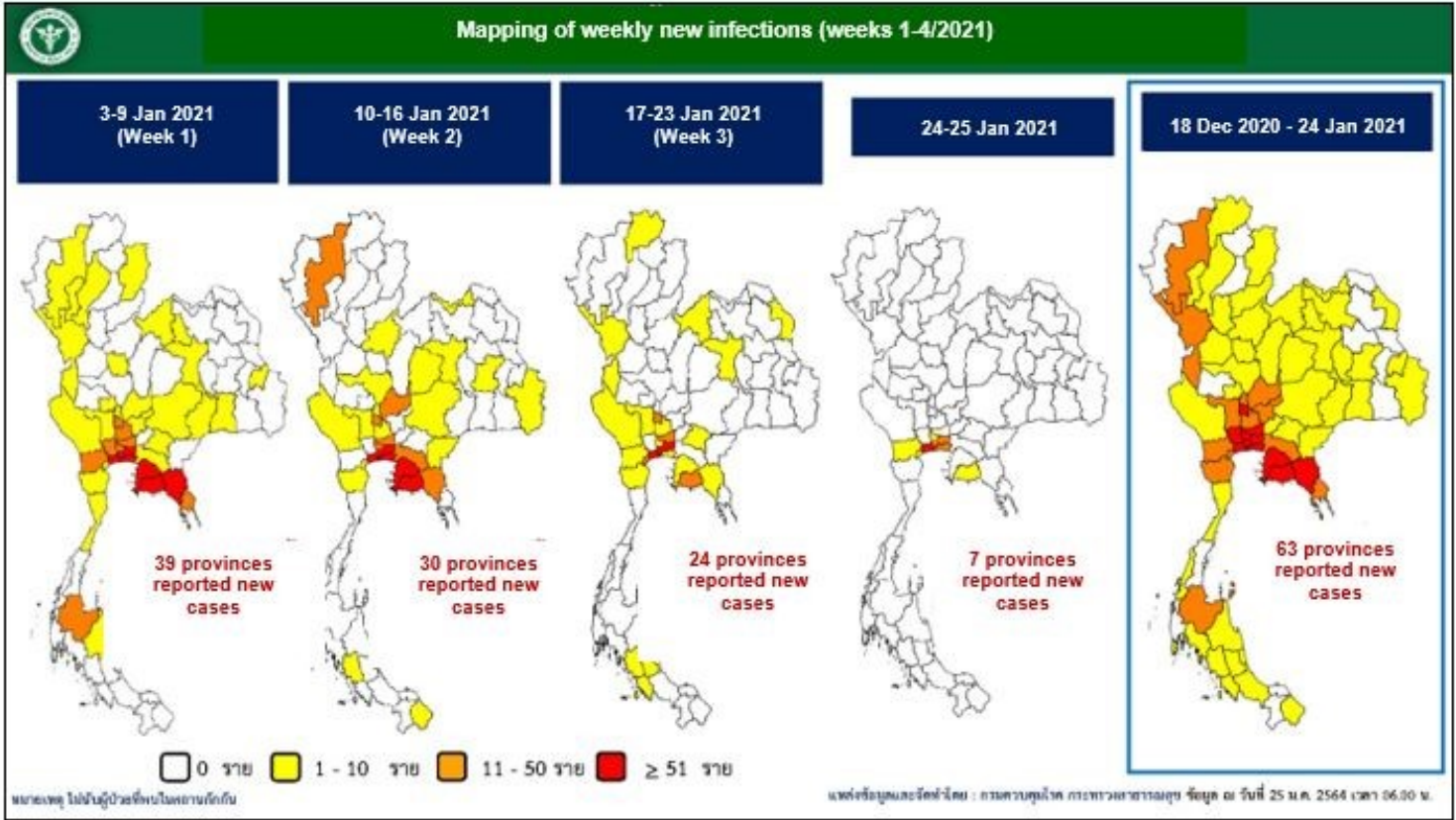


**THAILAND
SITUATION**

No. 135

SPOTLIGHT

- 187 new cases (up 1.4% on the previous day's total) of laboratory-confirmed COVID-19 were announced by the Ministry of Public Health of Thailand (MoPH), bringing the total number of cases to date to 13,687.
- Of these, 78% (10,662) have recovered, 0.5% (75) have died, and 21.5% (2,950) are still receiving treatment or in isolation. **Two new deaths were reported today.**
- The 187 laboratory-confirmed cases reported today include
 - 10 individuals who arrived recently in Thailand and were diagnosed in quarantine facilities.
 - 61 cases linked to occupational risk, visiting crowded places or had contact with confirmed cases, including Samut Sakhon (35), Bangkok (20), Samut Songkhram (3), Rayong (1), Samut Prakan (2).
 - The remaining 116 cases reported today are migrant workers (106) and in the Thai population (10) who were identified in relation to the event in Samut Sakhon through contact tracing and active case finding in Samut Sakhon (113), Bangkok (2), Rayong (1). This brings the cumulative total in this group to 4,684 cases.
- Locally transmitted COVID-19 cases have now been reported in 63 provinces. No additional provinces reported new cases today.**
- The 10 provinces reporting more than 50 cumulative cases are Samut Sakhon (5,480), Bangkok (700), Chonburi (648), Rayong (576), Samut Prakan (336), Chanthaburi (220), Nonthaburi (160), Ang Thong (110), Pathum Thani (85), and Nakhon Pathom (77).



UPDATE FROM THE CCSA

Situation in Bangkok

- ◆ 700 confirmed cases have been reported in Bangkok in the new wave; 22 new cases were reported today.
- ◆ Active case finding in Bangkok in factories is ongoing this week.

Samut Sakhon

- ◆ 5,480 confirmed cases have been reported in Samut Sakhon in the new wave; 148 new cases reported today.
- ◆ Samut Sakhon aims to test as many as 10,000 individuals each day this week.
- ◆ As of today, 1,091 beds are available at field hospitals. Bed capacity at field hospitals and factory quarantine facilities will be expanded to 3,000 to support treatment and isolation for new cases expected to emerge later this week.

Relaxation of measures

- ◆ The re-opening of schools and universities is still being discussed between the CCSA, Ministry of Public Health and Ministry of Education.

Suspension of local trains

- ◆ The State Railway of Thailand will suspend 57 local trains outside of rush hour starting tomorrow (26th January) to reduce unnecessary travel that could further spread COVID-19.

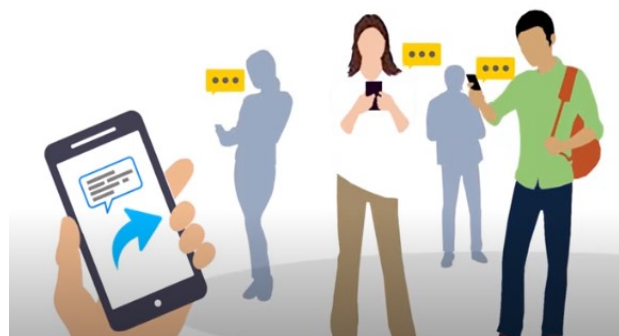
EXPLAINER

Watch this video of Dr. Renu Garg, Medical Officer at the WHO Thailand, shedding light on vaccines in Thailand with NBT channel's "Newsline" English-language news programme.



WHO: A SOURCE OF COVID-19 KNOWLEDGE AND INFORMATION

The World Health Organization Thailand has been working with the Ministry of Public Health to provide knowledge and information on COVID-19 to members of the public in Thai and English languages. Materials include infographics, short video clips, situation reports which can be accessed via the [WHO Thailand's website](#), [Facebook](#) and [Twitter](#).



WHAT THE WHO IS DOING TO SUPPORT THAILAND

WHO Thailand supports the Royal Thai Government through the Ministry of Public Health, sharing information on developments, guidelines and scientific updates. WHO also supports the wider UN response, including working with key partners to support migrant populations in Thailand. WHO also provides information and advice to staff of the UN system in Thailand.



USEFUL LINKS

The Thailand COVID19 situation report is available in Thai and English, please [visit](#)
For regular updates on WHO's response in Thailand, please [visit](#)

World Health Organization Country Office for Thailand
4th Fl., Permanent Secretary Bldg.3 Ministry of Public Health,
Nonthaburi Thailand, 11000

Media queries sethawebmaster@who.int and kanpirom@who.int



For latest updates and resources, please visit:

www.who.int/thailand [@WHO Thailand](#) [WHO Thailand](#) [WHO Thailand](#)