


# Coronavirus disease 2019 (COVID-19)


Data as reported by the CCSA mid-day press briefing

26 January 2021

## WHO Thailand Situation Report

  
**14,646**  
**(+959)**  
Confirmed

  
**75**  
**(+0)**  
Deaths

  
**3,679**  
Hospitalized

  
**10,892**  
**(+230)**  
Recovered



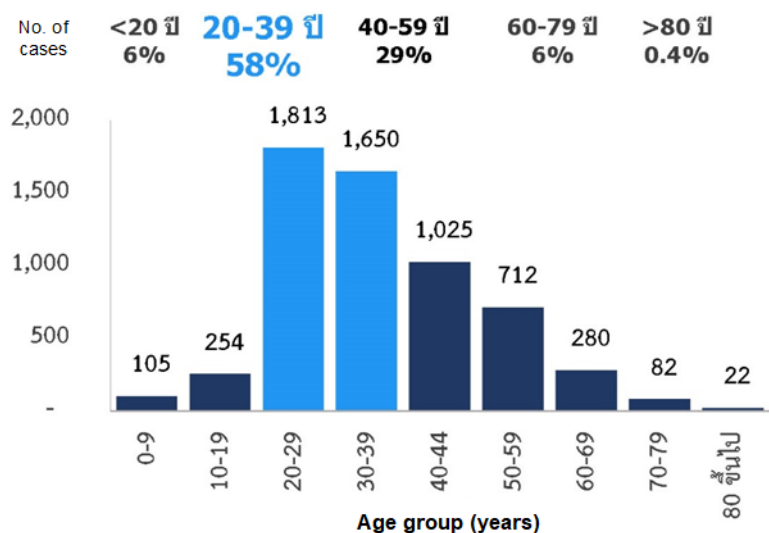
**THAILAND  
SITUATION  
UPDATE**  
**No. 136**

### SPOTLIGHT

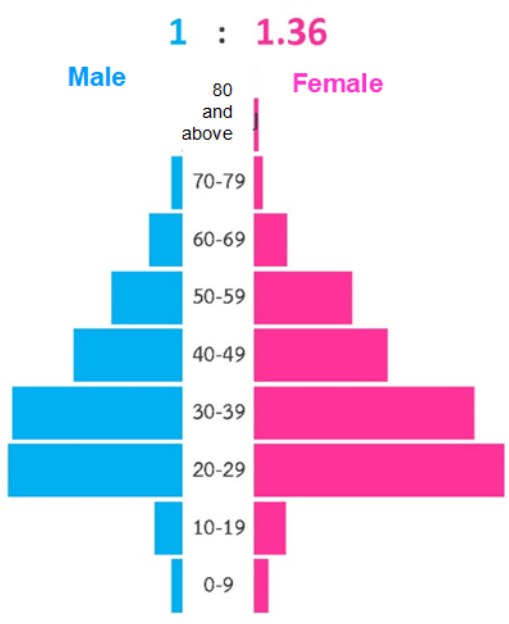
- 959 new cases** (up 7% from previous day's overall total) of laboratory-confirmed COVID-19 were announced by the Ministry of Public Health of Thailand (MoPH), bringing the total number of cases to date to 14,646.
- Of these, 75% (10,892) have recovered, 0.5% (75) have died, and 25% (3,679) are still receiving treatment or in isolation. **No new deaths were reported today.**
- The 959 laboratory-confirmed cases reported today include:
  - 22 individuals who arrived recently in Thailand and were diagnosed in quarantine facilities.
  - 89 cases linked to occupational risk, visiting crowded places or contact with confirmed cases, including Samut Sakhon (70), Bangkok (17), Samut Songkhram (1), Ubon Ratchathani (1).
  - The remaining 848 cases reported today are migrant workers (760) and in the Thai population (88) who were identified in relation to the event in Samut Sakhon through contact tracing and active case finding in Samut Sakhon (844) and Bangkok (4). This brings the cumulative total in this group to 5,532 cases.
- Locally transmitted COVID-19 cases have now been reported in 63 provinces. **No additional provinces reported cases today.**
- The 10 provinces reporting more than 50 cumulative cases are Samut Sakhon (6,394), Bangkok (721), Chonburi (648), Rayong (576), Samut Prakan (336), Chanthaburi (220), Nonthaburi (160), Ang Thong (110), Pathum Thani (85), and Nakhon Pathom (77).

### Characteristics of COVID-19 patients during the new wave (15th Dec 2020 – 25th Jan 2021, n = 8,935)

Median age: **34 years** (min. 3 months – max. 95 years)



Note: 2,992 (33%) missing data



Source: DDC, MoPH

# UPDATE FROM THE CCSA

- **Relaxation of measures**

- ◇ Tomorrow (27th January), the Ministry of Public Health's Emergency Operating Centre and the Working Group of CCSA will reach a conclusion on the relaxation of measures for various types of businesses after which it will be proposed to the CCSA for consideration on 29th January.

- **Alleviation for low-income families**

- ◇ Through the Caring Society Initiative led by the Ministry of Social Development and Human Security, necessary consumer products including masks and hand sanitizers will be distributed to low-income families in the 25 highly controlled provinces. The goods will be dispatched tomorrow to five provinces given top priority ie. Nonthaburi, Pathum Thani, Samut Sakhon, Samut Prakan, and Bangkok.

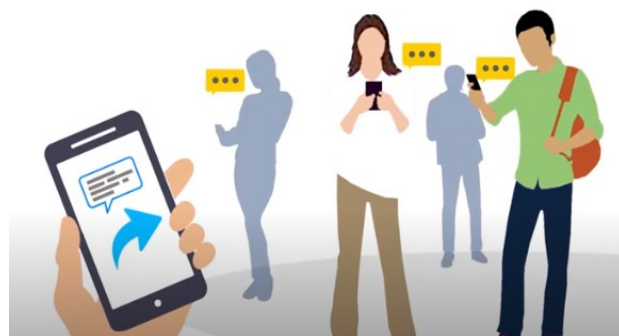
## EXPLAINER

Who Science in 5 video on the impacts of air pollution COVID-19



## WHO: A SOURCE OF COVID-19 KNOWLEDGE AND INFORMATION

The World Health Organization Thailand has been working with the Ministry of Public Health to provide knowledge and information on COVID-19 to members of the public in Thai and English languages. Materials include infographics, short video clips, situation reports which can be accessed via the [WHO Thailand's website](#), [Facebook](#) and [Twitter](#).



## WHAT THE WHO IS DOING TO SUPPORT THAILAND

WHO Thailand supports the Royal Thai Government through the Ministry of Public Health, sharing information on developments, guidelines and scientific updates. WHO also supports the wider UN response, including working with key partners to support migrant populations in Thailand. WHO also provides information and advice to staff of the UN system in Thailand.



### USEFUL LINKS

The Thailand COVID19 situation report is available in Thai and English, please [visit](#)  
For regular updates on WHO's response in Thailand, please [visit](#)  
For global figures and technical advice from WHO, please [visit](#)

**World Health Organization Country Office for Thailand**  
4th Fl., Permanent Secretary Bldg.3 Ministry of Public Health,  
Nonthaburi Thailand, 11000

Media queries [sethawebmaster@who.int](mailto:sethawebmaster@who.int) and [kanpirom@who.int](mailto:kanpirom@who.int)



**For latest updates and resources, please visit:**

[www.who.int/thailand](http://www.who.int/thailand) [@WHO Thailand](#) [WHO Thailand](#) [WHO Thailand](#)