

# Coronavirus disease 2019 (COVID-19)

Data as reported by the CCSA mid-day press briefing

## 27 January 2021 WHO Thailand Situation Report

15,465  
(+819)  
Confirmed

76  
(+1)  
Deaths

4,335  
Hospitalized

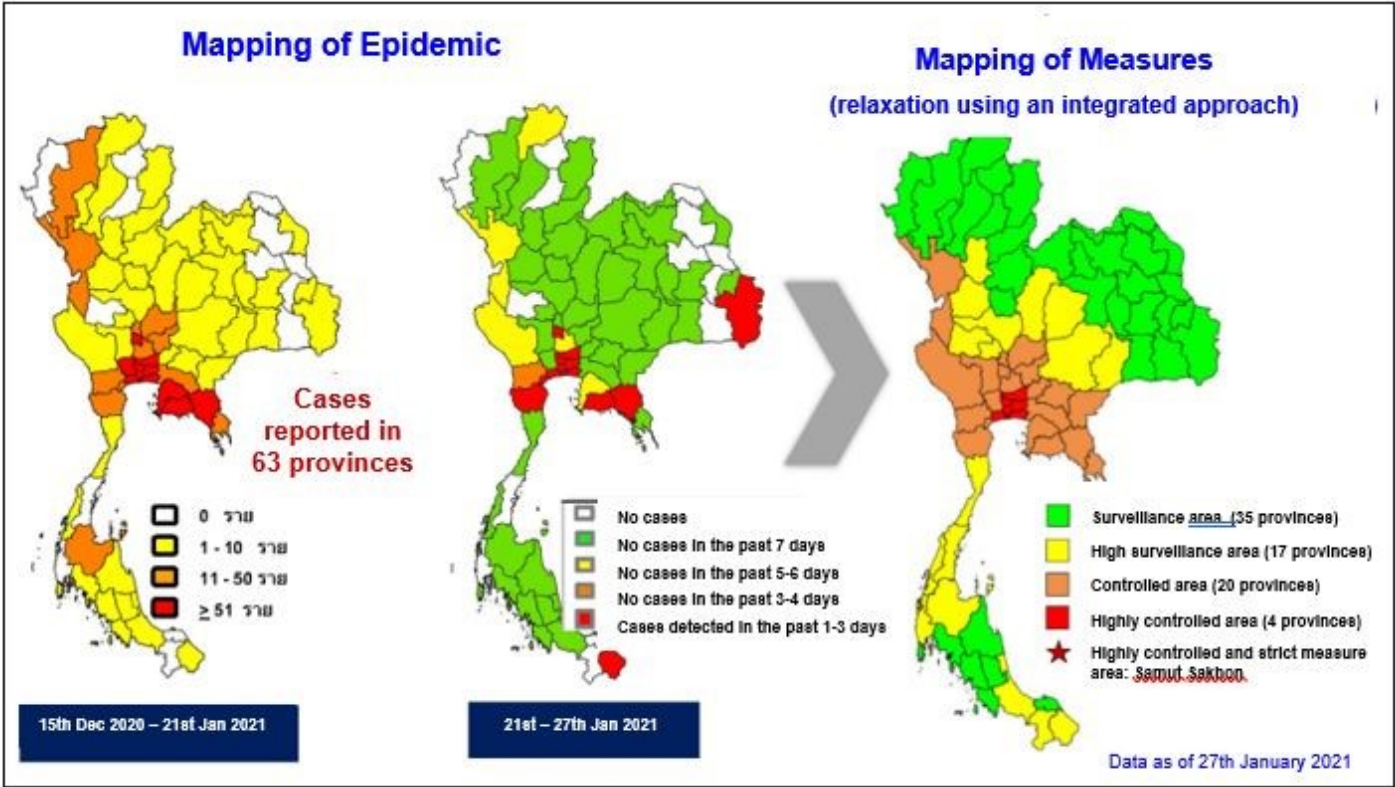
11,054  
(+162)  
Recovered



THAILAND  
SITUATION  
UPDATE  
No. 137

### SPOTLIGHT

- 819 new cases (up 5% from previous day's cumulative total) of laboratory-confirmed COVID-19 were announced by the Ministry of Public Health of Thailand bringing the total number of cases to date to 15,465.
- Of these, 71.5% (11,054) have recovered, 0.5% (76) have died, and 28% (4,335) are receiving treatment or in isolation. **One new death was reported today.**
- The 819 laboratory-confirmed cases reported today include
  - 11 individuals who arrived recently in Thailand and were diagnosed in quarantine facilities.
  - 14 cases linked to occupational risk, visiting crowded places or contact with confirmed cases, in-Bangkok (6), Samut Songkhram (1), Phetchaburi (1), Nonthaburi (1), Narathiwat (1), Pathum Thani (1), Ang Thong (1), Samut Prakan (1) and Chanthaburi (1).
  - 78 cases in Samut Sakhon, who are still under investigation.
  - The remaining 716 cases reported today are migrant workers and Thai nationals who were identified in relation to the event in Samut Sakhon through contact tracing and active case finding, in Samut Sakhon (714), Rayong (1) and Samut Prakan (1). The majority (714) of this group is still under investigation. This brings the cumulative total in this group to 6,248 cases.
- Locally transmitted COVID-19 cases have now been reported in 63 provinces. No additional provinces reported new cases today.



# UPDATE FROM THE CCSA

## Relaxation of measures

The Ministry of Public Health has proposed for consideration by the CCSA the relaxation of measures based on the following principles:

- Buffer zones should be established in areas bordering high-risk provinces.
- Designation of areas in five categories, i.e. highly-controlled areas under strict measures, highly-controlled areas, controlled areas, high-surveillance areas, and surveillance areas.
- Provinces with either no, or a low level of local transmission may consider different measures at a district level.
- The presence of venues conducive to the spread of Covid-19 e.g. entertainment venues, gambling dens, and cockfighting grounds.
- The risk of illegal entry into Thailand through border provinces.

## EXPLAINER

### WHO Science in 5 video on reopening schools.

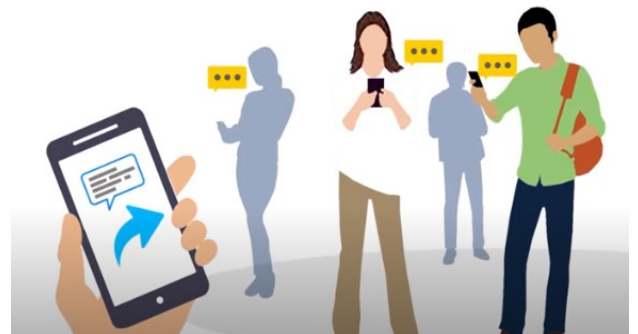
How should schools assess their risk before reopening?  
What do we know about children and COVID-19?

Dr Maria Van Kerkhove explains in this episode of Science in 5, WHO's conversations in science.



## WHO: A SOURCE OF COVID-19 KNOWLEDGE AND INFORMATION

The World Health Organization Thailand has been working with the Ministry of Public Health to provide knowledge and information on COVID-19 to members of the public in Thai and English languages. Materials include infographics, short video clips, situation reports which can be accessed via the [WHO Thailand's website](#), [Facebook](#) and [Twitter](#).



## WHAT THE WHO IS DOING TO SUPPORT THAILAND

WHO Thailand supports the Royal Thai Government through the Ministry of Public Health, sharing information on developments, guidelines and scientific updates. WHO also supports the wider UN response, including working with key partners to support migrant populations in Thailand. WHO also provides information and advice to staff of the UN system in Thailand.



The Thailand COVID19 situation report is available in Thai and English, please [visit](#)  
For regular updates on WHO's response in Thailand, please [visit](#)  
For global figures and technical advice from WHO, please [visit](#)

**World Health Organization Country Office for Thailand**  
4th Fl., Permanent Secretary Bldg.3 Ministry of Public Health,  
Nonthaburi Thailand, 11000

Media queries [sethaweabmaster@who.int](mailto:sethaweabmaster@who.int) and [kanpirom@who.int](mailto:kanpirom@who.int)



**For latest updates and resources, please visit:**

[www.who.int/thailand](http://www.who.int/thailand) [@WHO Thailand](https://twitter.com/WHO_Thailand) [WHO Thailand](https://www.facebook.com/WHO_Thailand) [WHO Thailand](https://www.youtube.com/WHO_Thailand)