

Coronavirus disease 2019 (COVID-19)

Data as reported by the CCSA mid-day press briefing


30 January 2021

WHO Thailand Situation Report


17,953
(+930)
Confirmed


77
(+1)
Deaths


6,371
Hospitalized


11,505
(+109)
Recovered



THAILAND
SITUATION
UPDATE
No. 140

SPOTLIGHT

- 930 new cases** (an increase of 5% on yesterday's cumulative total) of laboratory-confirmed COVID-19 were announced by the Ministry of Public Health of Thailand bringing the total number of cases to date to 17,953. **One new death** was reported today, bringing the total to 77.
 - Of these 64.1% (11,505) have recovered, 0.4% (76) have died, and 35.5% (6,371) are receiving treatment or are in isolation.
 - The 930 laboratory-confirmed cases reported today include:
 - 11 individuals who arrived recently in Thailand and were diagnosed in quarantine facilities and 3 individuals entered Thailand through the Thai-Malaysia land border
 - 27 cases linked to occupational risk, visiting crowded places or contact with confirmed cases, in Samut Sakhon (18), Bangkok (3), Nonthaburi (2), Maha Sarakham (2), Tak (1) and Samut Prakan (1).
 - The remaining 889 cases reported today are migrant workers (810) and Thai nationals (79), who were identified in relation to the event in Samut Sakhon through contact tracing and active case finding, in Samut Sakhon (865¹), Samut Prakan (18), Maha Sarakham (4), Bangkok (1) and Rayong (1). This brings the cumulative total in this group to 8,553 cases.
- ¹The recent high daily case count of around 700 new cases per day for the last 4 days reflects the surveillance strategy of targeted active surveillance amongst the 4,000 plus factories located in Samut Sakhon. These large counts reflect the testing methods used (see Sitrep 123 for an explanation) and represent the point prevalence, ie both acute and convalescent (historical) infections. **The large daily case counts in Samut Sakhon will not necessarily all be new infections**
- Locally transmitted COVID-19 cases have now been reported in 63 provinces. **No additional provinces** reported new cases today (for the 10th consecutive day).
 - As new infections in Malaysia are still at a high level (>5,000 daily new cases), surveillance is still required in the four provinces (15 districts) situated along the Thai-Malaysia border:
 - Narathiwat** (Su-ngai Kolok, Chanae, Sukhirin, Waeng, Tak Bai) bordering [Kelantan](#), [Perak](#)
 - Yala** (Kabang, Yaha, Bannang Sata, Than To, Betong) bordering [Kedah](#), [Perak](#)
 - Songkhla** (Sadao, Saba Yoi, Na Thawi) bordering [Perlis](#), [Kedah](#)

UPDATE FROM THE CCSA

Relaxation of measures

- Relaxation of measures has been announced through the regulation no.18 under the Emergency Decree in the government gazette of 29 January 2021, effective 1 February 2021. Details can be found via http://ratchakitcha.soc.go.th/DATA/PDF/2564/E/022/T_0043.PDF kk
- Orders and notification and regulations regarding COVID-19 in English language are available on the Ministry of Foreign Affairs' webpage <https://mfa.go.th/en/page/press-release-information-2?>
- According to the new regulation migrant workers are allowed to move across provinces as deemed appropriate by the provincial authorities in both the origin and the destination provinces². **Migrant workers in Samut Sakhon, however, are still not permitted to travel to other provinces.**
- ²Item 9 of regulation no. 18 stipulates that Provincial Governors, with concurrences of the Provincial Communicable Diseases Committees of the origin and the destination provinces, may consider approval of migrant workers' travel across provinces for work purposes provided that migrant workers strictly adhere to the government's disease control measures)

Designation of Areas	
Area	Province
Surveillance (35 provinces)	Krabi, Kalasin, Khon Kaen, Chiang Rai, Chiang Mai, Trang, Nakhon Phanom, Nakhon Si Thammarat, Nan, Bueng Kan, Pattani, Phayao, Phatthalung, Phichit, Phitsanulok, Phrae, Phuket, Maha Sarakham, Mukdahan, Mae Hong Son, Yasothon, Roi Et, Lamphun, Lamphun, Loei, Sisaket, Sakon Nakhon, Satun, Surin, Nong Khai, Nong Bua Lamphu, Amnat Charoen, Uttaradit, Ubon Ratchathani
High surveillance (17 provinces)	Kamphaeng Phet, Chai Nat, Chaiyaphum, Chumphon, Nakhon Ratchasima, Nakhon Sawan, Narathiwat, Buriram, Prachuap Khiri Khan, Phang Nga, Phetchabun, Yala, Ranong, Songkhla, Sukhothai, Surat Thani, Uthai Thani
Controlled (20 provinces)	Kanchanaburi, Chanthaburi, Chachoengsao, Chonburi, Sing Buri, Trat, Tak, Nakhon Nayok, Nakhon Pathom, Prachinburi, Phetchaburi, Rayong, Ratchaburi, Lopburi, Samut Songkhram, Sa Kaeo, Saraburi, Suphan Buri, Phra Nakhon Si Ayutthaya, Ang Thong
Highly controlled (4 provinces)	Bangkok, Samut Prakan, Nonthaburi, Pathum Thani
Highly controlled and strict measures	Samut Sakhon

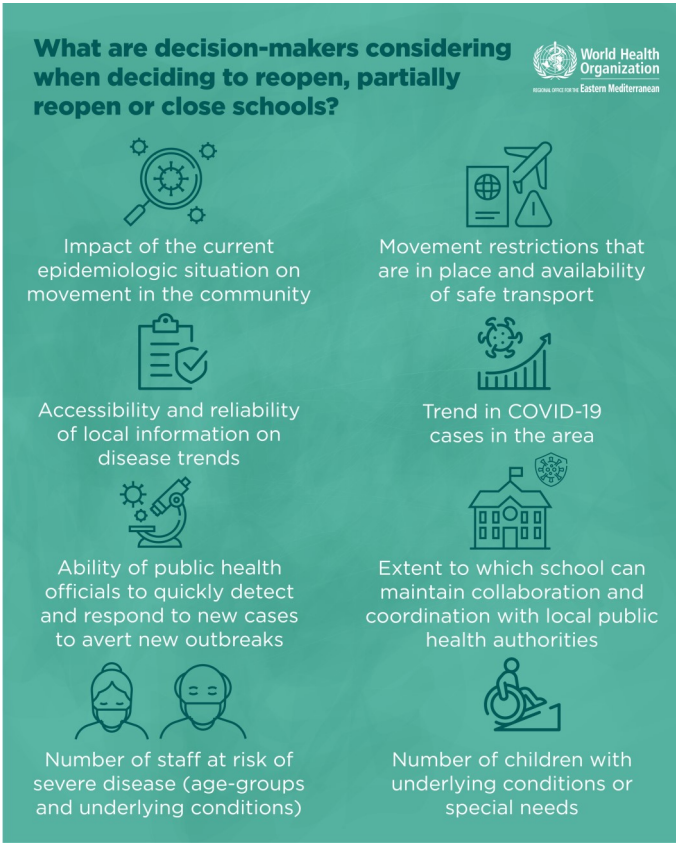
EXPLAINER: CHILDREN, COVID-19 AND TRANSMISSION IN SCHOOLS (PART 3)

WHO and Thai guidance for school re-opening during the COVID-19 pandemic is evidence-based.

Preventive and protective measures in schools will help to control COVID transmission. A multi-layered approach to help prevent the introduction and spread of SARS-CoV-2 in schools should include:

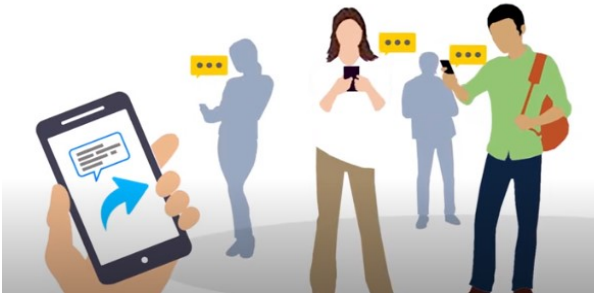
- In communities:** early detection and isolation of cases, including contact tracing and quarantine. Timely public health response to control any spread, including cluster investigation and public health and social measures, physical distancing, hand-washing and age-appropriate mask-wearing.
- In school and classrooms:** in addition to community measures, the Thai guideline focuses on six measures, comprising
 1. Screening of symptoms in students by parents and teachers.
 2. Mask-wearing
 3. Maintaining physical distancing
 4. Good hygiene practices (regular hand washing and cleaning of surfaces)
 5. Reducing overcrowding, limiting students in classroom to no more than 25 per class and ensuring adequate class room ventilation.
- Frequent and clear communication** with parents and other caregivers is also recommended. Signs should be posted in visible locations to promote everyday protective measures. Rumours, misinformation, and stigma should be countered and addressed should they occur.
- For individuals at high-risk**, including staff and teachers, enhanced protection and adequate measures are necessary for those with underlying chronic conditions (hypertension, diabetes, CVD, etc). Vulnerable children and children-at-risk should be given additional support to ensure school closures do not exacerbate vulnerabilities, such as nutrition and mental health.

For more information refer to the WHO checklist on school re-opening: <https://www.who.int/publications/i/item/9789240017467> and the Thai schools guideline: <https://drive.google.com/file/d/1VHgtXQ8m4JvH1CVubFsUem7XijUwJmdf/view>



WHO: A SOURCE OF COVID-19 KNOWLEDGE AND INFORMATION

The World Health Organization Thailand has been working with the Ministry of Public Health to provide knowledge and information on COVID-19 to members of the public in Thai and English languages. Materials include infographics, short video clips, situation reports which can be accessed via the [WHO Thailand's website](#), [Facebook](#)



WHAT THE WHO IS DOING TO SUPPORT THAILAND

WHO Thailand supports the Royal Thai Government through the Ministry of Public Health, sharing information on developments, guidelines and scientific updates. WHO also supports the wider UN response, including working with key partners to support migrant populations in Thailand. WHO also provides information and advice to staff of the UN system in Thailand.



The Thailand COVID19 situation report is available in Thai and English, please [visit](#)
For regular updates on WHO's response in Thailand, please [visit](#)
For global figures and technical advice from WHO, please [visit](#)

World Health Organization Country Office for Thailand
4th Fl., Permanent Secretary Bldg.3 Ministry of Public Health,
Nonthaburi Thailand, 11000

Media queries sethawebmaster@who.int and kanpirom@who.int

For latest updates and resources, please visit:

www.who.int/thailand [@WHO Thailand](#) [WHO Thailand](#) [WHO Thailand](#)

