

31 January 2021

WHO Thailand Situation Report



18,782
(+829)
Confirmed




77
(+0)
Deaths



7,090
Hospitalized



11,615
(+110)
Recovered



THAILAND
SITUATION
UPDATE
No. 141

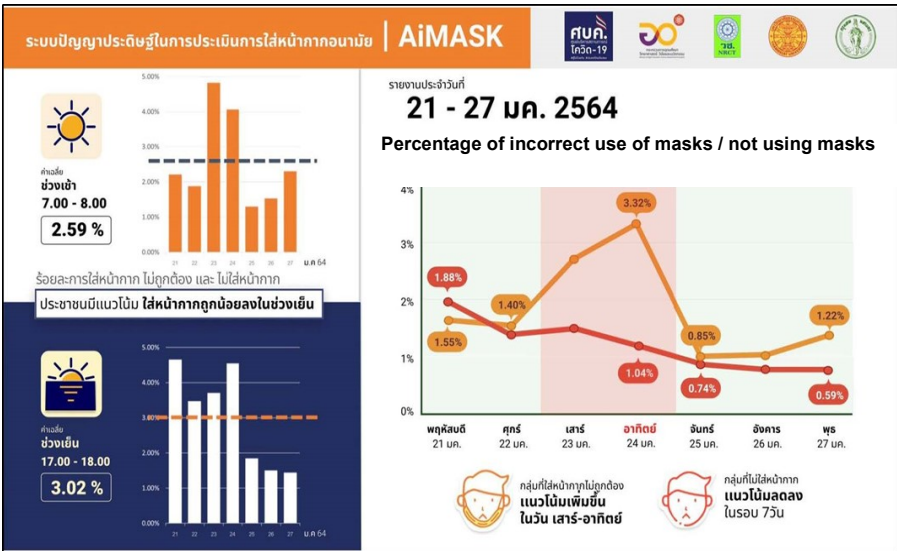
SPOTLIGHT

- 829 new cases** (4% cumulative case increase) of laboratory-confirmed COVID-19 were announced by the Ministry of Public Health of Thailand bringing the total number of cases to date to 18,782. **No new deaths were reported today.**
 - Of these, 62% (11,615) have recovered, 0.4% (77) have died, and 38% (7,090) are receiving treatment or are in isolation.
- The 829 laboratory-confirmed cases reported today include:
 - 7 individuals who arrived recently in Thailand and were diagnosed in quarantine facilities.
 - 91 cases linked to occupational risk, visiting crowded places or contact with confirmed cases, in Samut Sakhon (79), Bangkok (6), Nakhon Pathom (1), Nonthaburi (1), Khon Kaen (1), Ratchaburi (1), Lopburi (1) and Samut Songkhram (1). **Of these, 50 are migrant workers and 41 are Thai nationals.**
 - The remaining 731 cases reported today are **migrant workers (682) and Thai nationals (49)**, who were identified in relation to the event in Samut Sakhon through contact tracing and active case finding, in Samut Sakhon¹ (722), Maha Sarakham (4), Bangkok (1), Chonburi (1), Pathum Thani (1), Rayong (1) and Samut Songkhram (1). This brings the cumulative total in this group to 9,284 cases.
 - ¹The high daily case count of around 700 new cases per day for the last 6 days reflects the surveillance strategy of targeted active surveillance amongst the workers in the 4,000 plus factories located in Samut Sakhon. These large counts reflect the testing methods (see Sitrep 123 for an explanation) and **represent both current and historical infections**, and therefore **the large daily case counts are not necessarily all new infections**
- During the new wave (between 15th December 2020 and 31st January 2021), 14,545 confirmed cases have been reported, of which 4,576 were classified as local transmission, 9,284 were detected through active case finding and 685 were in individuals who entered Thailand from other countries. At present, 7,675 have recovered, 6,853 are receiving treatment, and 17 have died.
- Locally transmitted COVID-19 cases have now been reported in 63 provinces. **No additional provinces reported new cases today (for 11 consecutive days). Only 17 provinces reported new cases in the past 7 days.**

UPDATE FROM THE CCSA

Adherence to mask wearing in Bangkok

- Results from the use of AiMask technology with CCTV cameras to detect mask wearing behaviours at 16 public sites in 15 districts of Bangkok between 21st - 27th January show that:
 - 13 districts reported more than 95% adherence, 1 district (Bangkapi) reported 90-95% adherence and 1 district (Don Muang) reported less than 90% adherence.
 - 97% of the sampled population used masks correctly, 1.4% used masks but incorrectly, 1.05% did not use masks.
 - The percentage of incorrect use of masks was higher in the evening (3.02%) when compared with the morning (2.6%), and also higher on weekends when compared with weekdays.





EXPLAINER: REOPENING SCHOOLS

- From the CCSA daily briefing. The opinion poll conducted by The Super Poll among 1,079 parents and young people in Bangkok and Samut Sakhon between 28th-30th January found that the majority of respondents felt that using a combination of face-to-face and on-line learning has the lowest risk of COVID-19 transmission when compared with face-to-face learning only or on-line learning only.

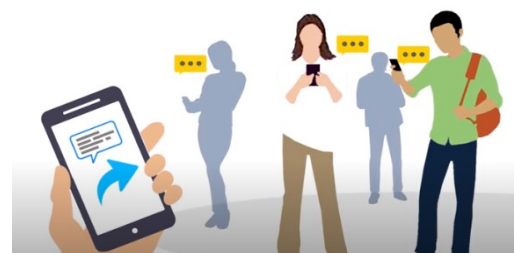


[WHO Science in 5. re-opening schools](#)



WHO: A SOURCE OF COVID-19 KNOWLEDGE AND INFORMATION

The World Health Organization Thailand has been working with the Ministry of Public Health to provide knowledge and information on COVID-19 to members of the public in Thai and English languages. Materials include infographics, short video clips, situation reports which can be accessed via the [WHO Thailand's website](#), [Facebook](#) and [Twitter](#).



WHAT THE WHO IS DOING TO SUPPORT THAILAND

WHO Thailand supports the Royal Thai Government through the Ministry of Public Health, sharing information on developments, guidelines and scientific updates. WHO also supports the wider UN response, including working with key partners to support migrant populations in Thailand. WHO also provides information and advice to staff of the UN system in Thailand.



USEFUL LINKS

The Thailand COVID19 situation report is available in Thai and English, please [visit](#)
For regular updates on WHO's response in Thailand, please [visit](#)
For global figures and technical advice from WHO, please [visit](#)

World Health Organization Country Office for Thailand
4th Fl., Permanent Secretary Bldg.3 Ministry of Public Health,
Nonthaburi Thailand, 11000

Media queries sethaweabmaster@who.int and kanpirom@who.int

For latest updates and resources, please visit:

www.who.int/thailand [@WHO Thailand](#) [WHO Thailand](#) [WHO Thailand](#)

World Health Organization
Thailand