


Coronavirus disease 2019 (COVID-19)


Data as reported by the CCSA mid-day press briefing


1 February 2021

WHO Thailand Situation Report


19,618
(+836)
Confirmed


77
(+0)
Deaths


7,027
Hospitalized

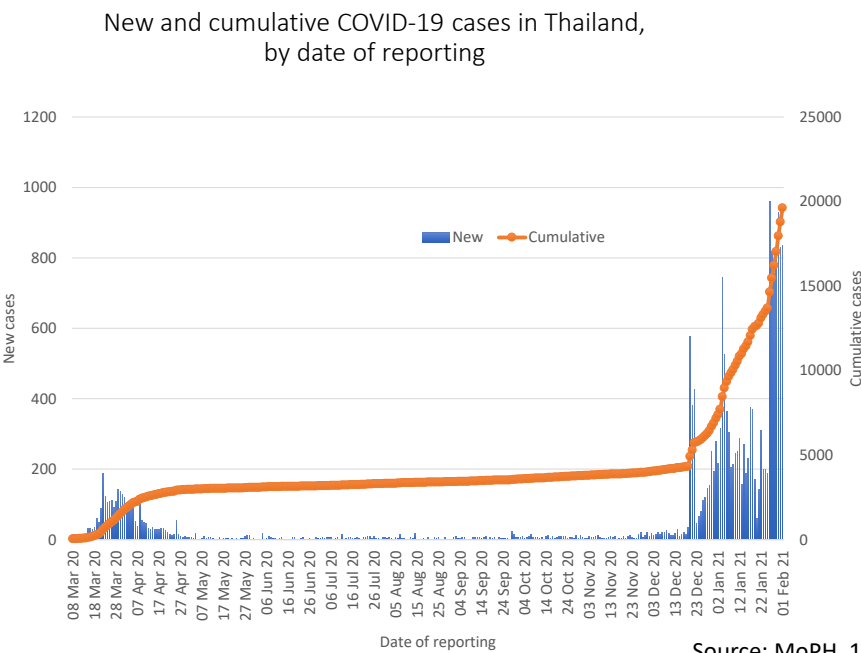

12,514
(+899)
Recovered



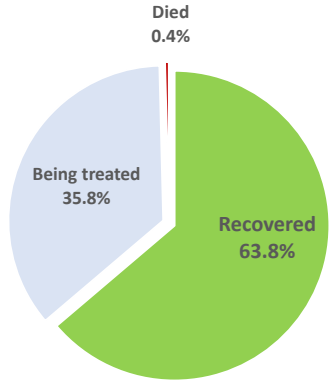
**THAILAND
SITUATION
UPDATE**
No. 142

SPOTLIGHT

- 836 new cases (up 4% from previous day's cumulative total) of laboratory-confirmed COVID-19 were announced by the Ministry of Public Health of Thailand bringing the total number of cases to date to 19,618.
- Of these, 64% (12,514) have recovered, 0.4% (77) have died, and 36% (7,027) are receiving treatment or are in isolation. **No new deaths were reported today.**
- The 836 laboratory-confirmed cases reported today include
 - 4 individuals who arrived recently in Thailand and were diagnosed in quarantine facilities.
 - 39 cases linked to occupational risk, visiting crowded places or contact with confirmed cases in Samut Sakhon (32), Bangkok (5) and Ratchaburi (2). Of these, 18 are migrant workers and 21 are Thai nationals.
 - The remaining 793 cases reported today are migrant workers (698) and Thai nationals (95) who were identified in relation to the event in Samut Sakhon through contact tracing and active case finding in Samut Sakhon (782), Maha Sarakham (6) and Bangkok (5). This brings the cumulative total in this group to 10,077 cases.
- Locally transmitted COVID-19 cases have now been reported in 63 provinces. No additional provinces reported new cases today. **42 provinces reported no cases in the past 7 days.**
- The 10 provinces reporting more than 50 cumulative cases are Samut Sakhon (11,182), Bangkok (766), Chonburi (649), Rayong (580), Samut Prakan (360), Chanthaburi (221), Nonthaburi (165), Ang Thong (113), Pathum Thani (87), and Nakhon Pathom (78).



Treatment outcomes of COVID-19 patients (n=19618)



Source: MoPH, 1 Feb 2021

UPDATE FROM CCSA

The Maha Sarakham Cluster

- To date, 16 confirmed cases have been reported in Maha Sarakham. This new cluster was linked to a person who had travelled to Bangkok and Nakhon Ratchasima during the New Year holidays and later attended several social events in Maha Sarakham.

Active case finding in Bangkok

- Active case finding among 10,023 individuals at 59 factories in 6 districts of Bangkok found 45 confirmed cases (0.45%), the majority (38) of whom are migrant workers.

Easing of restrictions

- Thailand has eased COVID-19 control measures in most areas effective today (1st February 2021).
- Full cooperation expected from markets, shopping malls and business operators to ensure safety measures are in place.
- Migrant workers wishing to travel to other provinces will require advance permission from the Provincial Disease Control Committees.
- The CCSA will continue to monitor the situation and the outcome of the implementation of measures and may further adjust

Relaxation of measures					
Zone	Samut Sakhon	Highly-controlled areas	Controlled areas	High surveillance areas	Surveillance areas
Restaurants	Until 9pm	Until 11pm	Until 11pm	✓	Legal operation hours
Alcohol consumption	✗	✗	Until 11pm	Until 12am	Legal operation hours
Entertainment venues pubs, bars, karaoke bars	✗	✗	Until 11pm	Until 12am	Legal operation hours
Schools	✗	A combination of on campus and online classes	✓	✓	Legal operation hours

*กิจกรรม/กิจกรรมเปิดได้ตามกฎหมายและมาตรการควบคุมโรค

© ศูนย์ข้อมูล COVID-19 | หมายเลข 1111 | ข้อมูล ณ วันที่ 30 มกราคม 2564

EXPLAINER: CHILDREN & COVID-19

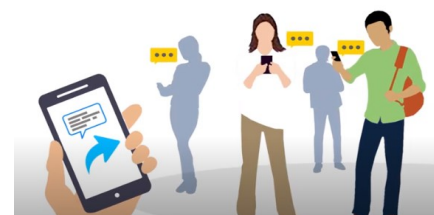


WHO Science in 5: Children and Covid-19

<https://youtu.be/rQxTnae5pSo>

WHO: A SOURCE OF COVID-19 KNOWLEDGE AND INFORMATION

The World Health Organization Thailand has been working with the Ministry of Public Health to provide knowledge and information on COVID-19 to members of the public in Thai and English languages. Materials include infographics, short video clips, situation reports which can be accessed via the [WHO Thailand's website](#), [Facebook](#) and [Twitter](#).



WHAT WHO IS DOING TO SUPPORT THAILAND

WHO Thailand supports the Royal Thai Government through the Ministry of Public Health, sharing information on developments, guidelines and scientific updates. WHO also supports the wider UN response, including working with key partners to support migrant populations in Thailand. WHO also provides information and advice to staff of the UN system in Thailand.



USEFUL LINKS

The Thailand COVID19 situation report is available in Thai and English, please [visit](#)
For regular updates on WHO's response in Thailand, please [visit](#)
For global figures and technical advice from WHO, please [visit](#)

World Health Organization Country Office for Thailand
4th Fl., Permanent Secretary Bldg.3 Ministry of Public Health,
Nonthaburi Thailand, 11000

Media queries sethaweabmaster@who.int and kanpirom@who.int

For latest updates and resources, please visit:

www.who.int/thailand [@WHO Thailand](#) [WHO Thailand](#) [WHO Thailand](#)

 World Health Organization
Thailand