


Coronavirus disease 2019 (COVID-19)

Data as reported by the CCSA mid-day press briefing

6 February 2021

WHO Thailand Situation Report


23,134
(+490)
Confirmed


79
(+0)
Deaths


6,781
Hospitalized


16,274
(+943)
Recovered



**THAILAND
SITUATION
UPDATE**
No. 147

SPOTLIGHT

- 490 new cases (up 2.2% from previous day's cumulative total) of laboratory-confirmed COVID-19 were announced by the Ministry of Public Health of Thailand bringing the total number of cases to date to 23,134.
- Of these, 70.4% (16,274) have recovered, 0.3% (79) have died, and 29.3% (6,781) are receiving treatment or are in isolation. **No new deaths were reported today.**
- The 490 laboratory-confirmed cases reported today include
 - 10 individuals who arrived recently in Thailand and were diagnosed in quarantine facilities and 1 individual who entered Thailand through the land border (a Cambodian migrant worker entered through the Thai-Malaysia land border in Narathiwat Province).
 - 67 cases detected through the routine surveillance system linked to occupational risk, visiting crowded places or contact with confirmed cases, in Bangkok (23), Tak (2), Samut Songkhram (1), Phetchaburi (1) and Samut Sakhon (40). Of these, 30 are migrant workers and 35 are Thai nationals.
 - 412 cases including migrant workers (393) and Thai nationals (19) identified through active case finding, in Samut Songkhram (1), Samut Prakan (1) and Samut Sakhon (410). This brings the cumulative total in this group to 13,236 cases.
- Of 6,781 cases who are receiving treatment, 2,320 are in conventional hospitals and 4,461 are in field hospitals.
- During the new wave (between 15th December 2020 and 5th February 2021), 18,897 confirmed cases have been reported, of which 4,906 were detected through the routine surveillance system, 13,236 were detected through active case finding and 755 were in individuals who entered Thailand from other countries. At present, 12,234 have recovered, 6,544 are receiving treatment, and 19 have died.
- Of 479 cases reported today, 94% were detected in Samut Sakhon, 5% in Bangkok and 1% in other Provinces
- COVID-19 cases in the new wave have been reported in 63 Thai provinces. No additional provinces reported new cases today. Sixteen (16) provinces reported new cases this week (31st January – 6th February)
- The 11 provinces reporting more than 50 cumulative cases in the new wave are Samut Sakhon (14,530), Bangkok (843), Chonburi (649), Rayong (580), Samut Prakan (361), Chanthaburi (221), Nonthaburi (166), Ang Thong (113), Pathum Thani (87), Nakhon Pathom (78), and Samut Songkhram (53).

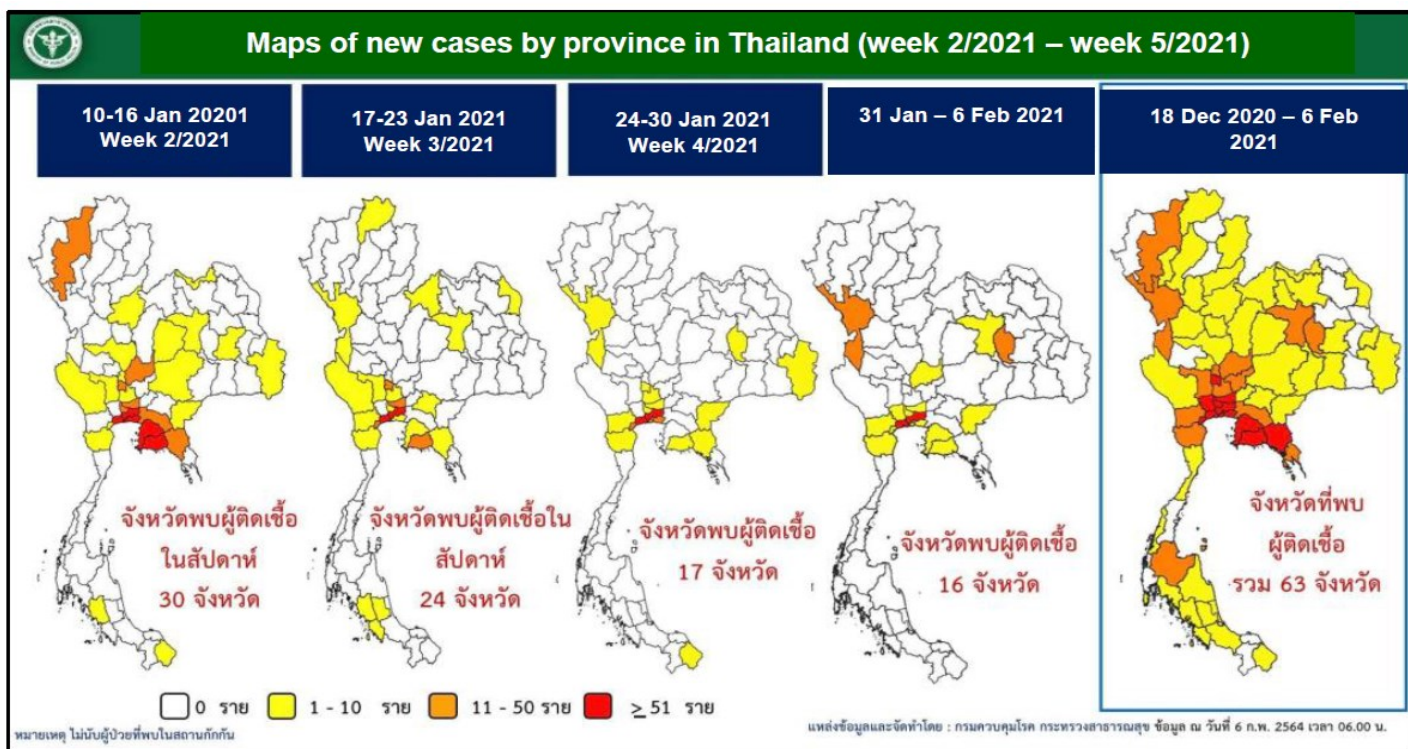
UPDATE FROM THE CCSA

A new cluster in Tak Province

- A confirmed case was reported in a 75-year male in Mae Sot District in Tak Province. Initial results from case investigation found 11 confirmed cases from 7 families. Case investigation is ongoing.

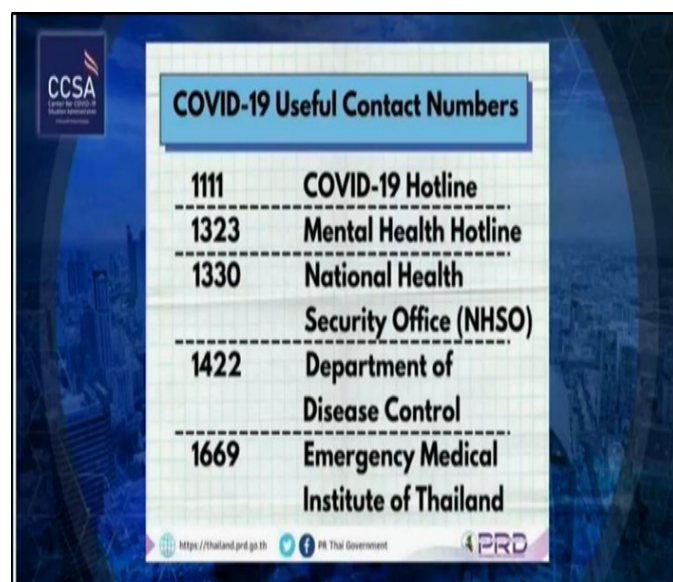
The situation in Malaysia

- 3,391 new cases reported in Malaysia as of yesterday (5th February 2021), including in the four states neighbouring Thailand i.e. Perak (92), Kedah (91), Kelantan (58) and Perlis (1).
- Surveillance along the border in the four southernmost provinces (Narathiwat, Yala, Songkhla and Satun) in Thailand is ongoing.



Districts with highest COVID-19 cases in Bangkok

- These (below) are the five districts in Bangkok that have reported the highest number of infections.



WHAT WHO IS DOING TO SUPPORT THAILAND

WHO Thailand supports the Royal Thai Government through the Ministry of Public Health, sharing information on developments, guidelines and scientific updates. WHO also supports the wider UN response, including working with key partners to support migrant populations in Thailand. WHO also provides information and advice to staff of the UN system in Thailand.



The Thailand COVID19 situation report is available in Thai and English, please [visit](#)
 For regular updates on WHO's response in Thailand, please [visit](#)

World Health Organization Country Office for Thailand
 4th Fl., Permanent Secretary Bldg.3 Ministry of Public Health,
 Nonthaburi Thailand, 11000

Media queries sethaweabmaster@who.int and kanpirom@who.int

For latest updates and resources, please visit:

www.who.int/thailand @WHO Thailand WHO Thailand WHO Thailand

World Health Organization
 Thailand