



Coronavirus disease 2019 (COVID-19)


Data as reported by the CCSA mid-day press briefing


7 February 2021

WHO Thailand Situation Report


23,371
(+237)
Confirmed


79
(+0)
Deaths


6,350
Hospitalized


16,942
(+668)
Recovered

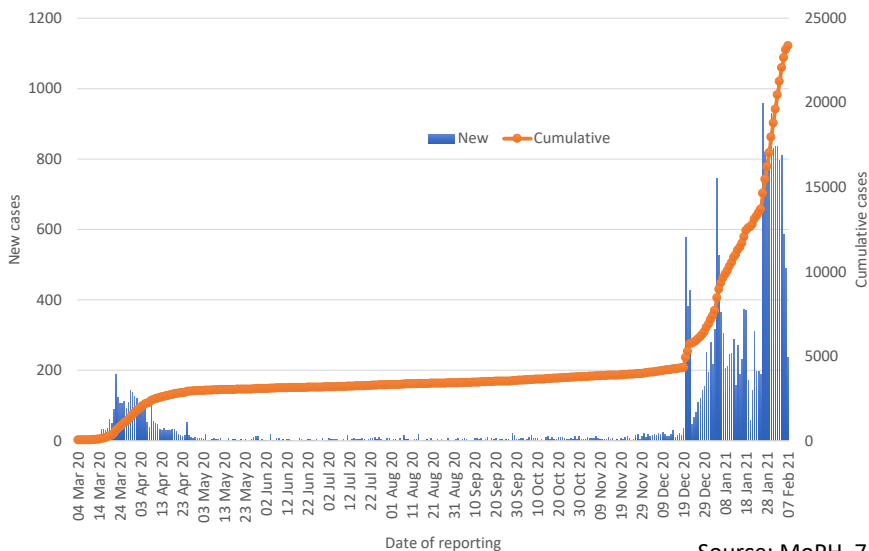


**THAILAND
SITUATION
UPDATE**
No. 148

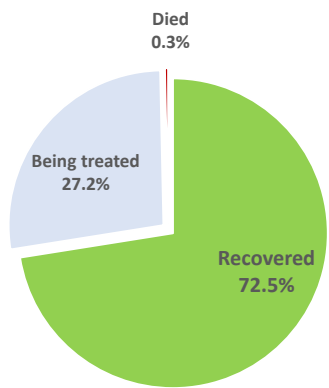
SPOTLIGHT

- 237 new cases (up 1% from the previous day's cumulative total) of laboratory-confirmed COVID-19 were announced by the Ministry of Public Health of Thailand bringing the total number of cases to date to 23,371.
- Of these, 72.5% (16,942) have recovered, 0.3% (79) have died, and 27.2% (6,350) are receiving treatment or are in isolation. **No new deaths were reported today.**
- The 237 laboratory-confirmed cases reported today include
 - 12 individuals who arrived recently in Thailand and were diagnosed in quarantine facilities.
 - 113 cases detected through the routine surveillance system linked to occupational risk, visiting crowded places or contact with confirmed cases, in Bangkok (14), Tak (3), Samut Songkhram (1) and Samut Sakhon (95). Of these, 66 are migrant workers and 47 are Thai nationals.
 - 112 cases including migrant workers (109) and Thai nationals (3) identified through active case finding, in Tak (2), Bangkok (3) and Samut Sakhon (107). This brings the cumulative total in this group to 13,348 cases.
- Of 6,350 cases who are receiving treatment, 2,447 are in conventional hospitals and 3,903 are in field hospitals.
- During the new wave (between 15th December 2020 and 5th February 2021), 19,134 confirmed cases have been reported, of which 5,019 were detected through the routine surveillance system, 13,348 were detected through active case finding and 767 were in individuals who entered Thailand from other countries. At present, 13,002 have recovered, 6,113 are receiving treatment, and 19 have died.
- COVID-19 cases in the new wave have been reported in 63 Thai provinces. No additional provinces reported new cases today.
- The 11 provinces reporting more than 50 cumulative cases in the new wave are Samut Sakhon (14,732), Bangkok (860), Chonburi (649), Rayong (580), Samut Prakan (361), Chanthaburi (221), Nonthaburi (166), Ang Thong (113), Pathum Thani (87), Nakhon Pathom (78), and Samut Songkhram (54).

New and cumulative COVID-19 cases in Thailand,
by date of reporting



Treatment outcomes of
COVID-19 patients (n=23371)



Source: MoPH, 7 Feb 2021

UPDATE FROM THE CCSA

The situation in Samut Sakhon

- ◇ To date, active case finding in Samut Sakhon has been conducted in almost 150,000 individuals. The CCSA is considering to continue with large-scale active case finding of approximately 10,000 individuals per day until the end of February to inform decisions on relaxation of measures in Samut Sakhon.
- ◇ Na Di and Tha Sai Sub-districts have been announced as maximum controlled areas with highly strict measures, following the detection of about 7,000 cases (mostly migrant workers) in 4 factories.
- ◇ A lockdown is being implemented in these two sub-districts to prevent 30,000 high-risk members of the population from travelling. Restrictions will be eased when the situation in these sub-districts has improved.

The situation in Bangkok

- ◇ As of the 5th February 2021, active case finding has already been conducted among 13,192 individuals from 118 factories in 6 districts. Results show 54 confirmed cases, equivalent to 0.41%.

The situation in Tak

- ◇ Mae Sot District has been announced as a maximum controlled area; large social gatherings are prohibited and travellers from Mae Sot are required to self-quarantine for 14 days.

Adherence to mask wearing

- ◇ Results from the use of AiMask technology with CCTV cameras to detect mask wearing behaviours at 24 public sites in 18 districts between 28th January and 4th February show that:
 - 98.07% of the sampled population used masks correctly (+ 0.54 from the previous week), 1.15% (- 0.27 from the previous week) used masks but did so incorrectly, 0.78% (- 0.27 from the previous week) did not use masks.
 - 17 districts reported more than 95% adherence, 1 district (Dong Mueang) reported 90-95% adherence and no districts reported less than 90% adherence.
 - The percentage of incorrect use of masks remained higher in the evening (2.33%) when compared with in the morning (1.84%), and was also higher on weekends when compared with weekdays.

Relief measures

- ◇ The new financial scheme 'Rao Chana' will provide 7,000 Baht per person for two months to 31 million people who are most affected by the pandemic, in a form of credit for food and essential items - including transportation.
- ◇ The government has also rolled out a new discount campaign with more than 10,000 shops participating and offering discounts of up to 60% for purchase of food and beverages until the end of February.

WHAT WHO IS DOING TO SUPPORT THAILAND

WHO Thailand supports the Royal Thai Government through the Ministry of Public Health, sharing information on developments, guidelines and scientific updates. WHO also supports the wider UN response, including working with key partners to support migrant populations in Thailand. WHO also provides information and advice to staff of the UN system in Thailand.



USEFUL

The Thailand COVID19 situation report is available in Thai and English, please [visit](#)
For regular updates on WHO's response in Thailand, please [visit](#)

World Health Organization Country Office for Thailand
4th Fl., Permanent Secretary Bldg.3 Ministry of Public Health,
Nonthaburi Thailand, 11000

Media queries sethaweabmaster@who.int and kanpirom@who.int

For latest updates and resources, please visit:

www.who.int/thailand [@WHO Thailand](https://twitter.com/WHO_Thailand) [WHO Thailand](https://www.facebook.com/WHOThailand) [WHO Thailand](https://www.youtube.com/WHOThailand)

