

Coronavirus disease 2019 (COVID-19)


Data as reported by the CCSA mid-day press briefing

11 February 2021


WHO Thailand Situation Report




24,104
(+201)
Confirmed




80
(+1)
Deaths



4,225
Hospitalized




19,799
(+885)
Recovered



THAILAND
SITUATION
UPDATE
No. 152

SPOTLIGHT

- **201 new cases** of laboratory-confirmed COVID-19 were announced by the Ministry of Public Health of Thailand bringing the total number of cases to date to 24,104. **No new deaths were reported today.**
- Of the cases, 82% (19,799) have recovered, 0.3% (80) have died, and 17.5% (4,225) are receiving treatment or are in isolation. Of 4,225 cases who are receiving treatment, 2,694 are in conventional hospitals and 1,531 are in field hospitals.
- The 201 laboratory-confirmed cases reported today include:
 - ◊ 16 individuals who arrived recently in Thailand and were diagnosed in quarantine facilities.
 - ◊ 96 cases detected through the routine surveillance system linked to occupational risk, visiting crowded places or contact with confirmed cases, in Bangkok (16), Samut Sakhon (56), **Tak (23)** and Nonthaburi (1). Of these, 54 are migrant workers and 42 are Thai nationals.
 - ◊ 89 cases including migrant workers (76) and Thai nationals (13) identified through active case finding, in Bangkok (1), Tak (14), Rayong (1) and Samut Sakhon (73). This brings the cumulative total in this group to 13,634 cases.
- Of 185 cases acquired in Thailand, about 70% were detected in Samut Sakhon, 9% in Bangkok and 21% in other provinces.
- During the new wave (between 15th December 2020 and 11th February 2021), 19,867 confirmed cases have been reported, of which 5,417 were detected through the routine surveillance system, 13,634 were detected through active case finding and 816 were in individuals who entered Thailand from other countries. At present, 15,859 have recovered, 3,988 are receiving treatment, and 20 have died.
- COVID-19 cases acquired in Thailand in the new wave have been reported in 63 provinces. **No additional provinces reported new cases today.**
- The 12 provinces reporting more than 50 cumulative cases in the new wave are Samut Sakhon (15,316), Bangkok (896), Chonburi (649), Rayong (581), Samut Prakan (361), Chanthaburi (221), Nonthaburi (169), Ang Thong (113), Pathum Thani (91), and Nakhon Pathom (79), **Tak (77)** and Samut Songkhram (67).



Maps of confirmed cases in Thailand by province (Week 3/2021 – Week 6/2021)


17-23 Jan 2021
Week 3/2021


24-30 Jan 2021
Week 4/2021


1-6 Feb 2021
Week 5/2021


7-11 Feb 2021

18 Dec 2020 - 11 Feb 2021











0 ราย 1 - 10 ราย 11 - 50 ราย ≥ 51 ราย

หมายเหตุ: ไม่พบผู้เสียชีวิตภายในสัปดาห์

แหล่งข้อมูลและจัดทำโดย: กรมควบคุมโรค กระทรวงสาธารณสุข ข้อมูล ณ วันที่ 11 ก.พ. 2564 เวลา 06.00 น.

UPDATE FROM THE CCSA

- In Bangkok to 10th February 2021 active case finding has screened 59,845 individuals.
 - ◇ Two (2) districts have never reported cases (Saphan Sung and Samphanthawong), 6 districts reported cases in the past two days including (Phasi Charoen, Bang Khae, Bang Bon, Klong Toey, Sathon and Pathumwan).
 - ◇ Fourteen (14) confirmed cases have been reported linked to infections among staff of Chulalongkorn University in Pathumwan District. Active case finding in surrounding communities is ongoing
- Vaccines
 - ◇ To date, three manufacturers have requested Thai FDA emergency use authorization of COVID-19 vaccines, including Astra-Zeneca (approved), Sinovac (in process), Johnson & Johnson (requesting).
 - ◇ The approval of emergency use of COVID-19 vaccine in Thailand is for one year and post-vaccination must be monitored and evaluated.

EXPLAINER: SARS-CoV-2 coronavirus mutations and their implications for public health and vaccine effectiveness

In the third article we will focus on two important SARS2 coronavirus variants. Let's begin with the virus often called the "UK variant" as it was first reported by public health authorities in South East England on December 14th. The UK routinely sequences about 5-10% of all SARS2 viruses to monitor for mutations. This variant was detected during an investigation that followed a rapid and unexpected rise in COVID-19 cases in South East England. The variant comes from the SARS-CoV-2 20B/GR family (a lineage scientists call B.1.1.7) and contains 14 mutations. Multiple lines of evidence indicate that this variant is about 50% more transmissible than its predecessor. Since the initial report, this variant rapidly spread across the UK and is now responsible for more than 90% of all infections there. It has also been detected in 86 countries, including Vietnam and Malaysia.

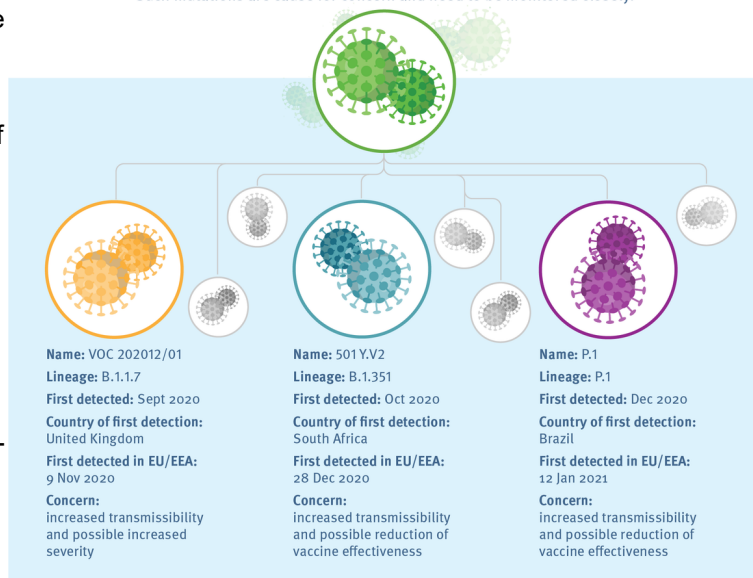
A second variant was first detected in South Africa in October 2020. Scientists refer to it as 501Y.V2, and the media often call it the "South African variant". This variant has eight mutations in the gene that is responsible for the spike protein that enables the virus to infect human cells. Mutations in the spike protein can result in changes in our immune response and impact vaccine effectiveness. Within a few weeks, this variant became the dominant strain in parts of South Africa and now represents about 90% of the viruses that are sequenced there. The variant has been detected in 41 other countries, prompting some of them to ban travelers from South Africa. In tomorrow's article, we will focus on the public health implications of these two variants.

- For more on SARS-CoV-2 variants visit: <https://www.who.int/csr/don/31-december-2020-sars-cov2-variants/en/>

Mutation of SARS-CoV-2: current variants of concern

8 February 2021

Mutations of SARS-CoV-2 that cause COVID-19 have been observed globally. Viruses, in particular RNA viruses such as coronaviruses, constantly evolve through mutations, and while most will not have a significant impact, some mutations may provide the virus with a selective advantage such as increased transmissibility. Such mutations are cause for concern and need to be monitored closely.



#COVID19

Learn more in the latest risk assessment by ECDC on SARS-CoV-2 variants of concern <http://bit.ly/RRAVariants>

Source: The European Centre for Disease Prevention and Control

<https://www.ecdc.europa.eu/en>



WHAT WHO IS DOING TO SUPPORT THAILAND

WHO Thailand supports the Royal Thai Government through the Ministry of Public Health, sharing information on developments, guidelines and scientific updates. WHO also supports the wider UN response, including working with key partners to support migrant populations in Thailand. WHO also provides information and advice to staff of the UN system in Thailand.



USEFUL LINKS

The Thailand COVID19 situation report is available in Thai and English, please [visit](#)
For regular updates on WHO's response in Thailand, please [visit](#)
For global figures and technical advice from WHO, please [visit](#)

World Health Organization Country Office for Thailand
4th Fl., Permanent Secretary Bldg.3 Ministry of Public Health,
Nonthaburi Thailand, 11000

Media queries sethawebmaster@who.int and kanpirom@who.int

For latest updates and resources, please visit:

www.who.int/thailand [@WHO Thailand](#) [WHO Thailand](#) [WHO Thailand](#)



World Health
Organization
Thailand