

COVID-19 Situation, Thailand

07 December 2022

Based on data as reported by the CCSA

4,711,528 confirmed cases

33,285 total deaths

Daily average numbers reported from **12 -19 November 2022**



612* new confirmed cases per day

*(including hospital admissions only)



15 deaths per day

Main messages

| Continue to reduce community transmission of COVID-19 across Thailand |

| RTG encourages COVID-free settings and booster vaccinations |

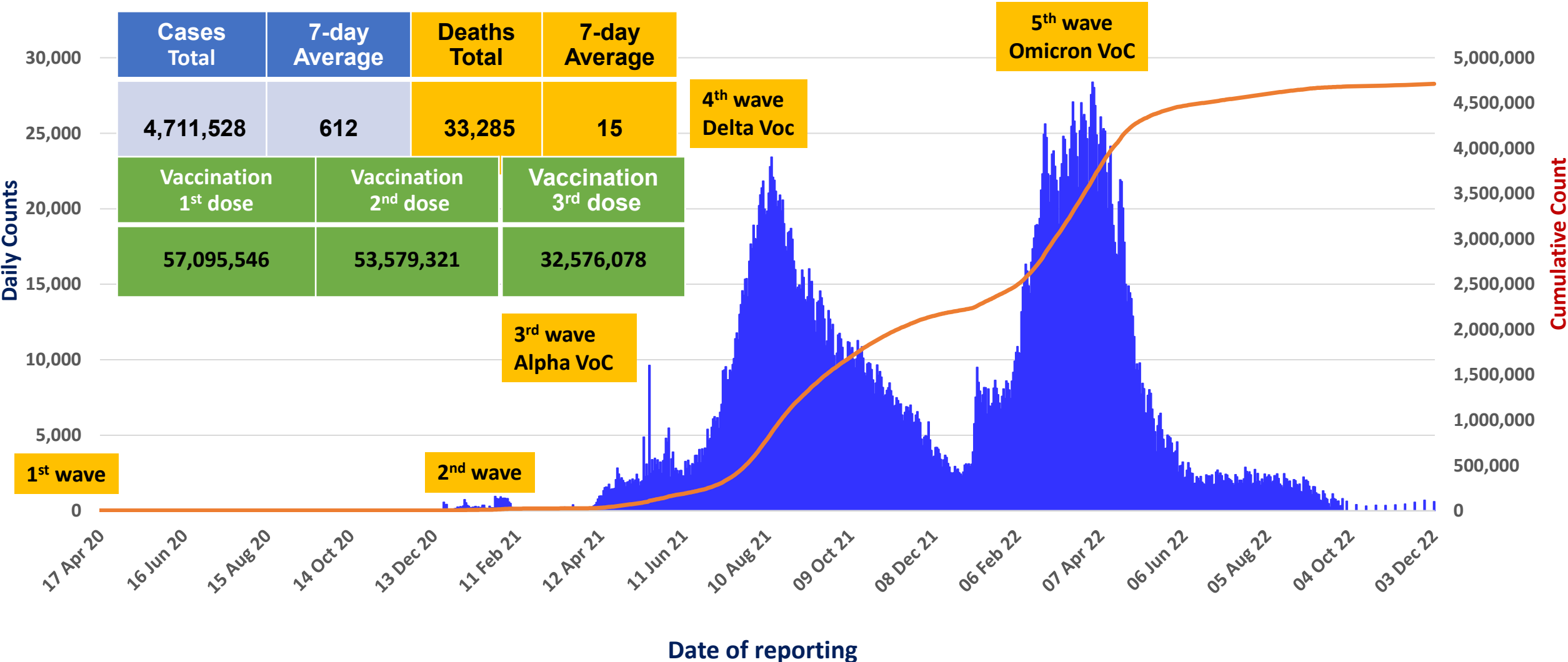
| Get vaccinated, maintain universal precautions and stay informed |



National Situation

Thailand COVID-19 cases, deaths and vaccinations to date: chart showing cases per day

New Cases



Source: MoPH to 03 Dec 2022

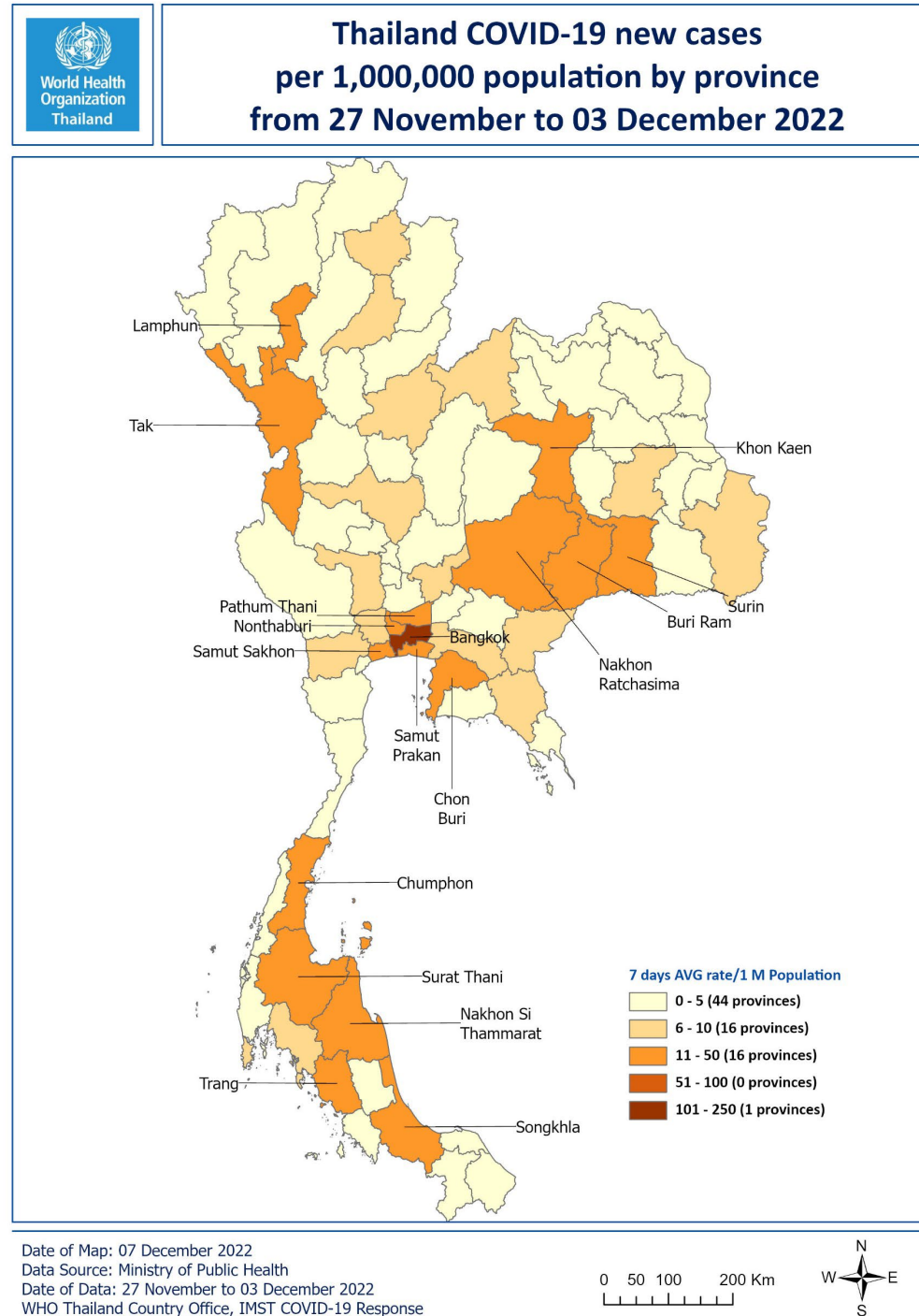
■ New — Cumulative

[Back to Contents](#)

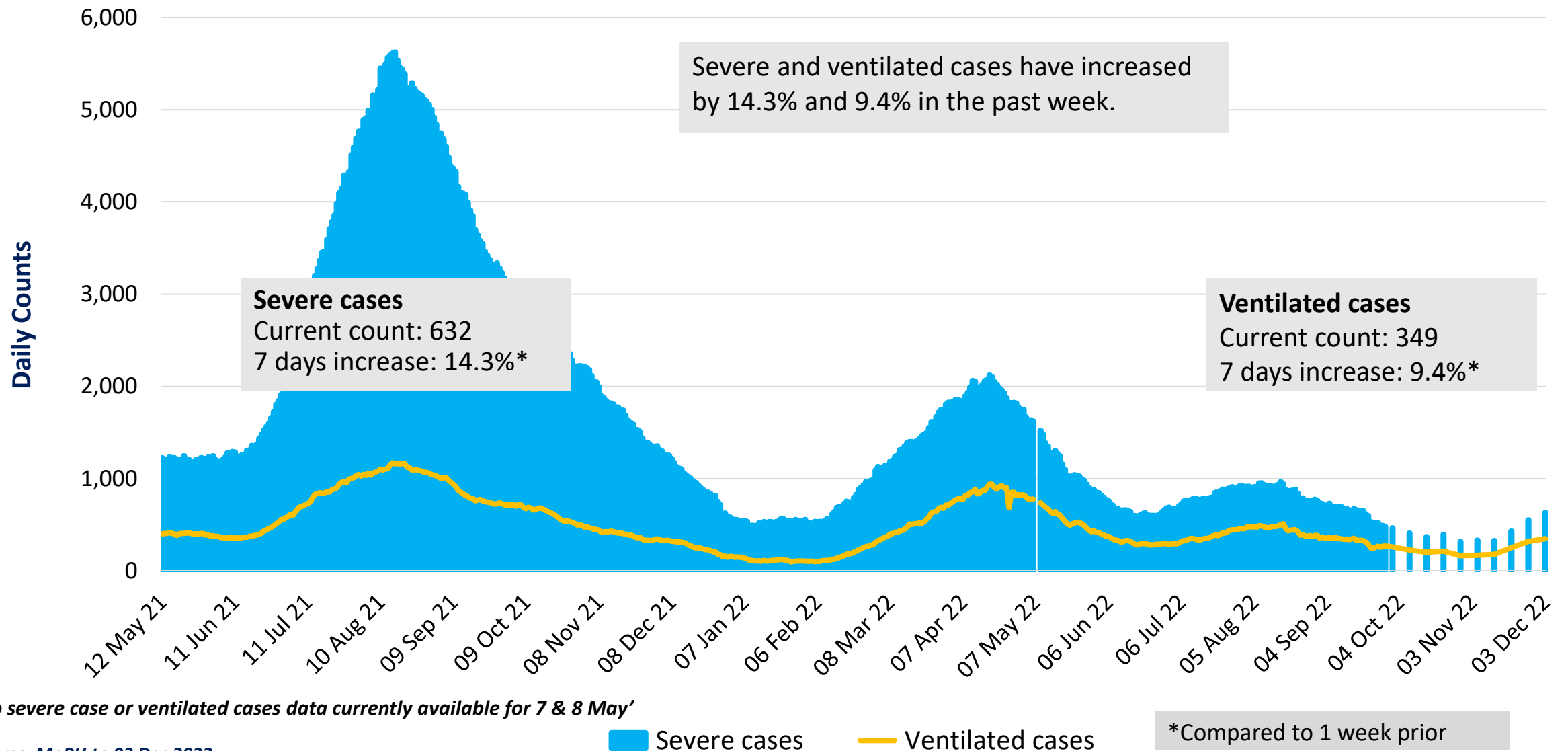


New COVID-19 cases per million population by province

- Daily COVID-19 cases are increasing in Thailand, especially in Bangkok, but also in some provinces in the North, the North-East and in the South of Thailand

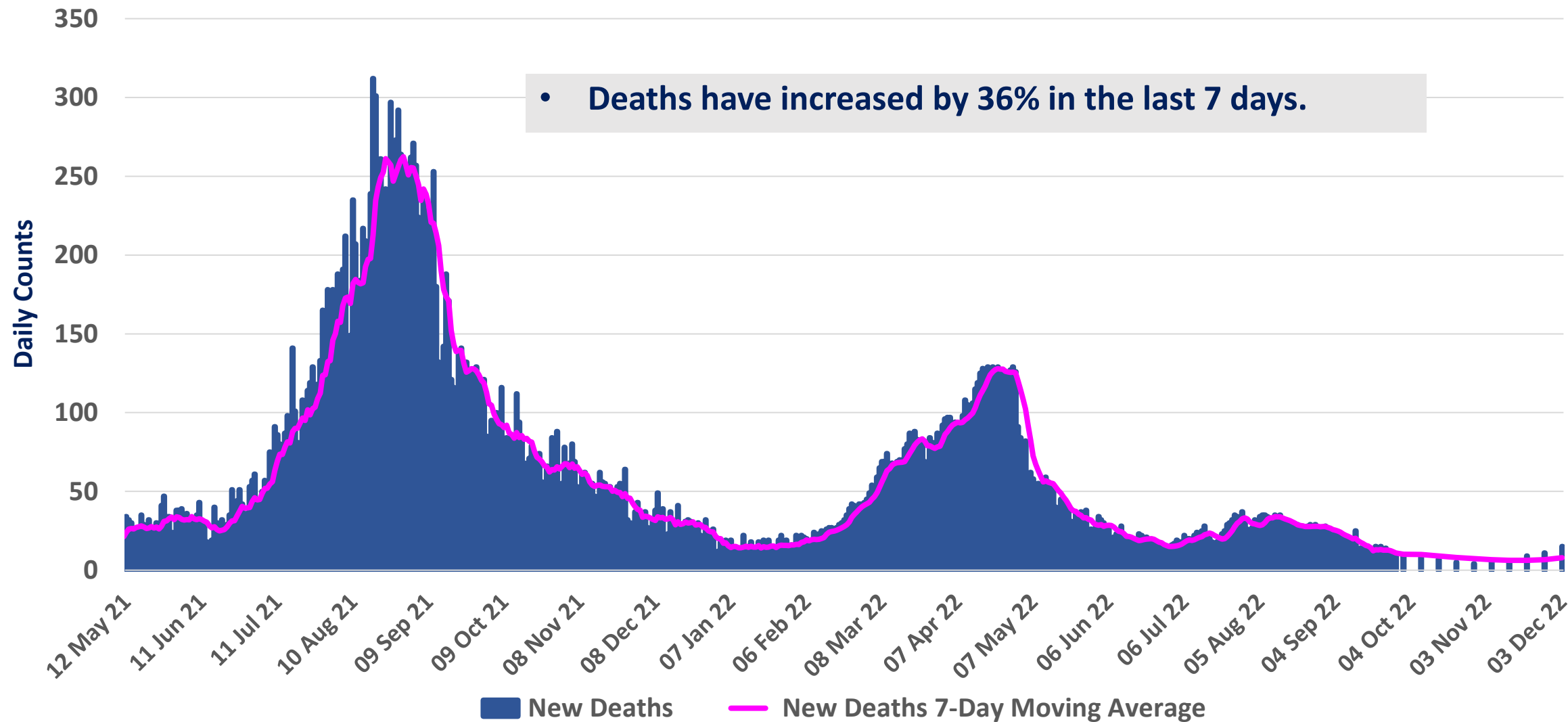


Severe and ventilated COVID-19 cases



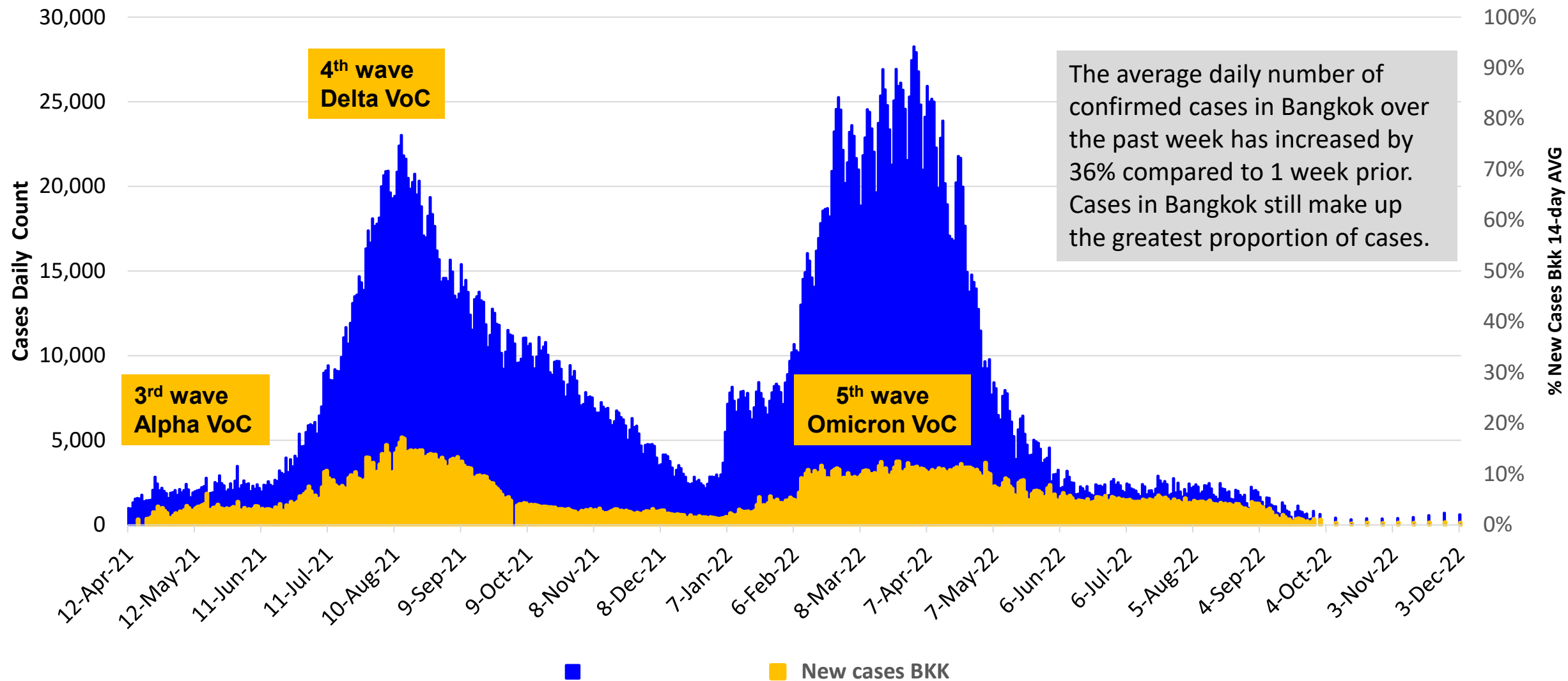
Source: MoPH to 03 Dec 2022

COVID-19 deaths in Thailand



Source: MoPH to 03 Dec 2022

Proportion of new COVID-19 cases in Bangkok relative to all cases



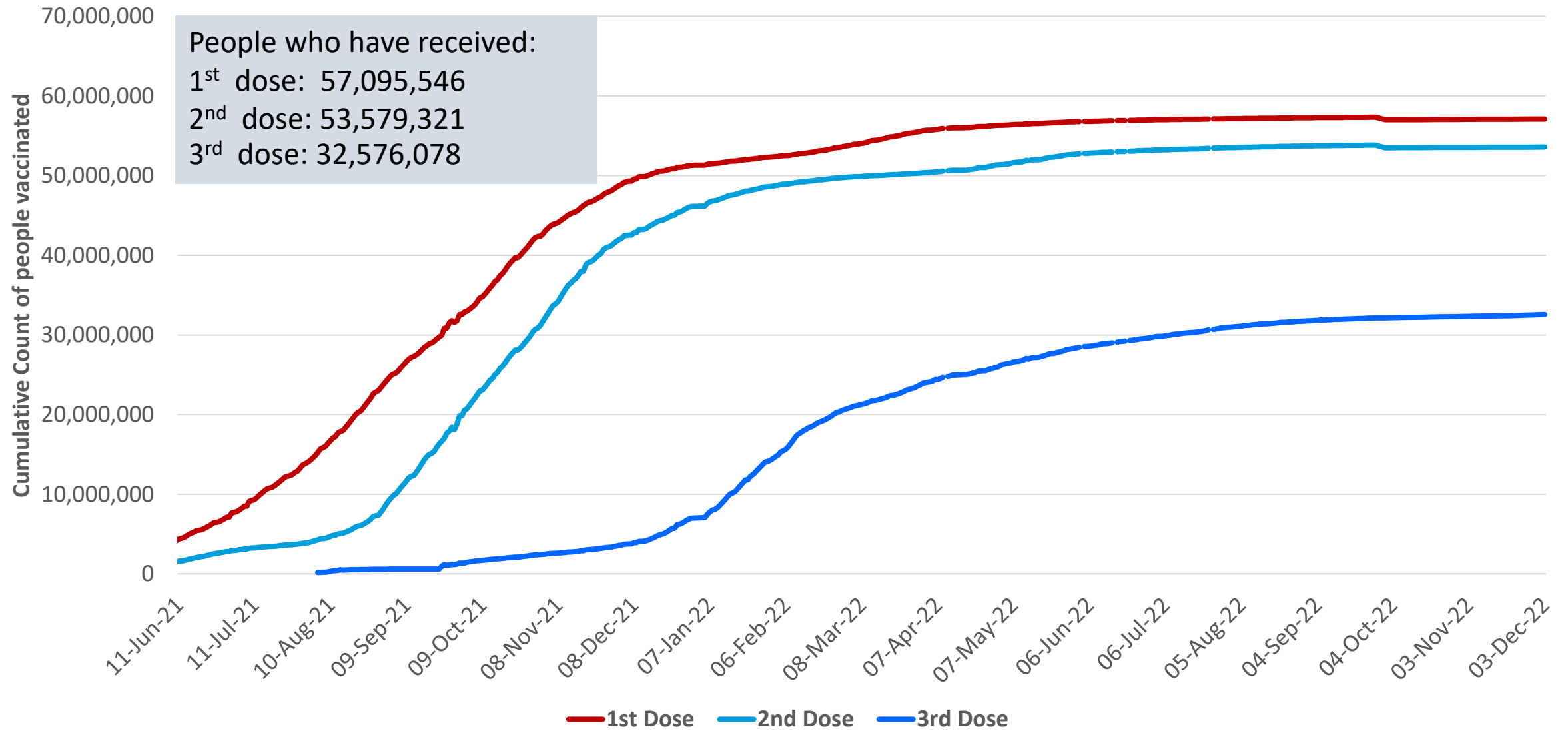
Source: MoPH: to 03 Dec 2022

[Back to Contents](#)

COVID-19 Update 09-Dec-22

Vaccination

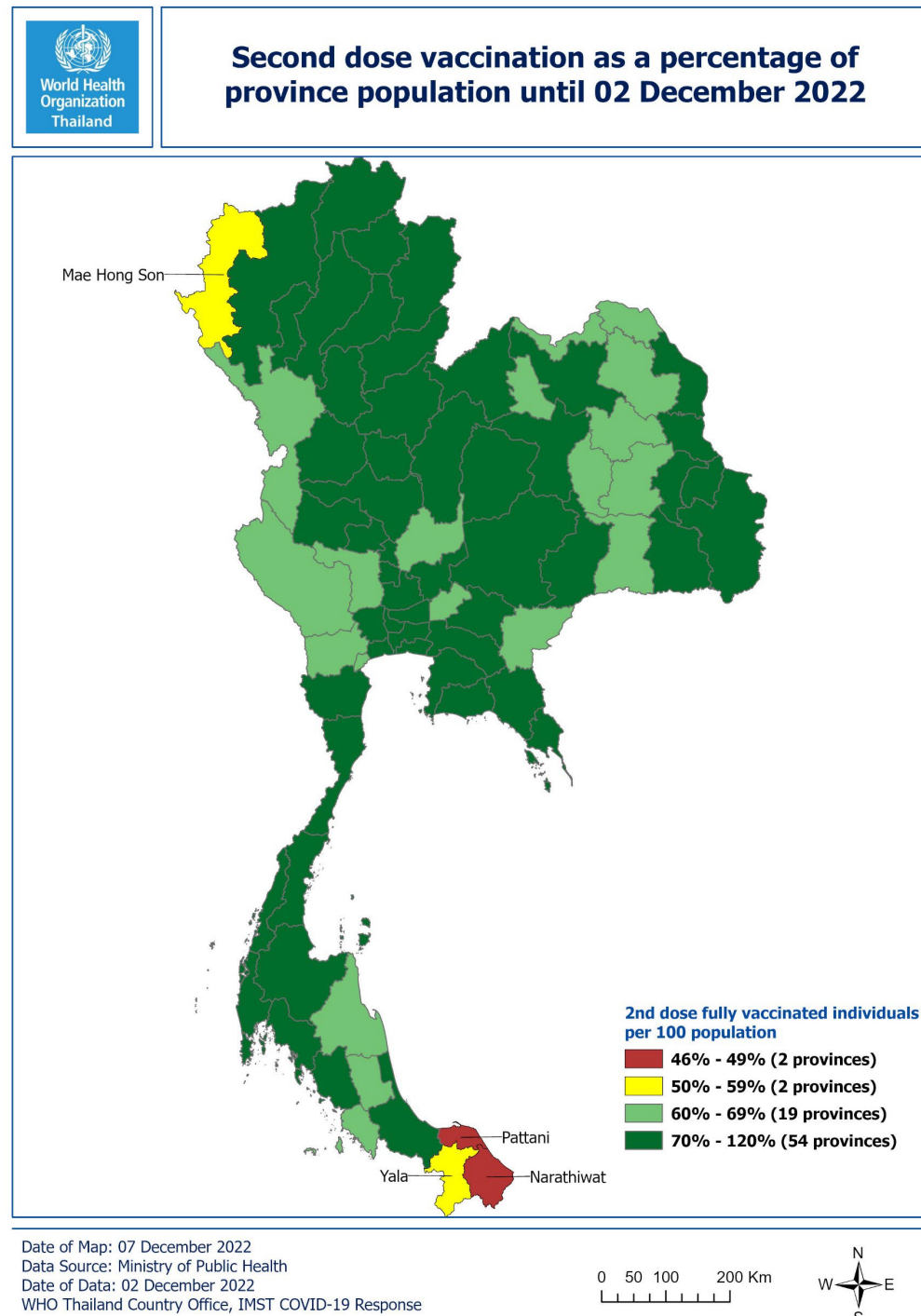
National COVID-19 Vaccination Coverage



Source: MoPH to 03 Dec 2022

Second dose coverage per million population by province

- Fifty-four out of seventy-seven provinces report more than 70% 2-dose vaccination coverage.
- Narathiwat and Pattani provinces in the far south continue to report **less than 50% 2-dose vaccination coverage**.





As of 30 September 2022

การเดินทางเข้าประเทศไทย Travelling to Thailand

ตั้งแต่วันที่ 1 ตุลาคม 2565
from 1 October 2022 onwards

ยกเลิกการตรวจสอบเอกสารที่เกี่ยวข้องกับโรคโควิด-19
อาทิ เอกสารรับรองการได้รับวัคซีน และผลตรวจหาเชื้อโควิด-19
สำหรับผู้เดินทางเข้าประเทศไทย

Passengers will **no longer** be required to present COVID-19 related documents such as the certificate of vaccination and COVID-19 test result upon arrival in Thailand.



DCA

02-572-8442

Department of Consular Affairs
Ministry of Foreign Affairs

[Back to Contents](#)

COVID-19 Update 09-Dec-22

Update on public health measures and guidance

- CCSA has resolved.
- The Emergency Decree will not be extended.
- From **1 October 2022 onward**, MoPH will manage COVID-19 as a “**Disease under surveillance**” instead of a “**Dangerous infectious disease**”.
- **COVID-19 testing by using ATK will only be recommended for individuals with respiratory symptoms or suspicion of infection.** It does not recommend for asymptomatic individuals.
- **Mask wearing:** MoPH advises people to wear a mask in closed and poor ventilation setting such as **public transportation, hospitals, nursing care, and daycare.**
- If people have respiratory symptoms, they should practice Distancing, Mask wearing, Hand washing, Temperature checking, and Testing.
- MoPH advises workplaces to screen symptoms of COVID-19 among staff. The workplace should report cases to authorities if they detect a large number of staff getting sick.

Sources:

CCSA's press briefing on 23 September 2022 (<https://www.facebook.com/search/top?q=pr%20thai%20government>; https://media.thaigov.go.th/uploads/public_img/source/230965.pdf)

MoPH's press briefing on 24 September 2022 (<https://pr.moph.go.th/?url=pr/detail/2/04/179106/>; <https://www.facebook.com/photo/?fbid=466171622204753&set=pcb.466171658871416>)

Close contact and case management

Close contact		Positive case	
Vaccinated	Unvaccinated	Vaccinated	Unvaccinated
Self-quarantine is not required		Patients in the “green category” (asymptomatic or mild symptoms) will no longer be required to self-isolate but will be advised to self-observe for 5 days and strictly practice DMHTT.	

Sources:

- CCSA’s press briefing on 23 September 2022 (<https://www.facebook.com/search/top?q=pr%20thai%20government>; https://media.thaigov.go.th/uploads/public_img/source/230965.pdf)
- Guidelines on COVID-19 clinical practice, diagnosis, treatment, and prevention of health workers dated 29 September 2022 (https://covid19.dms.go.th/backend/Content/Content_File/Covid_Health/Attach/25650929131357PM_CPG_COVID-19_v.25_n_20220929.pdf)

COVID-19 patients	Case management
Asymptomatic COVID-19 case	<ul style="list-style-type: none"> Self-isolation is not required Self-observation 5 days, practice DMHTT strictly
COVID-19 case with mild symptoms, without pneumonia, and no risk factors	
COVID-19 case with mild symptoms but with risk factors or mild pneumonia	<ul style="list-style-type: none"> Self-observation 5 days, practice DMHTT strictly OR Hospitalization (as per physician's discretion)
COVID-19 case with pneumonia	<ul style="list-style-type: none"> Hospitalization

COVID-19 treatment scheme and reimbursement are back to pre-COVID time

Sources:

- MoPH's press briefing on 26 September 2022(<https://pr.moph.go.th/?url=pr/detail/2/04/179106/>)
- Guidelines on COVID-19 clinical practice, diagnosis, treatment, and prevention of health workers dated 29 September 2022 (https://covid19.dms.go.th/backend/Content/Content_File/Covid_Health/Attach/25650929131357PM_CPG_COVID-19_v.25_n_20220929.pdf)

[Back to Contents](#)

COVID-19 Update 09-Dec-22

USEFUL LINKS

- The Thailand COVID19 situation report is available in Thai and English, please [visit](#)
- For regular updates on WHO's response in Thailand, please [visit](#)
- For global figures and technical advice from WHO, please [visit](#)

World Health Organization Country Office for Thailand
4th Fl., Permanent Secretary Bldg.3 Ministry of Public Health,
Nonthaburi, Thailand, 11000. sethawebmaster@who.int



www.who.int/thailand



@WHO Thailand

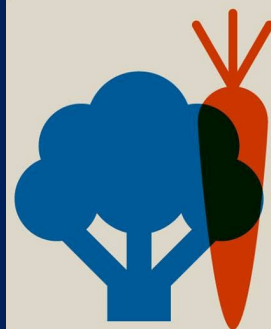


WHO Thailand



WHO Thailand

STAY HEALTHY TO BEAT COVID-19



**EAT A
HEALTHY DIET**



**AVOID
ALCOHOL**



**QUIT
TOBACCO**



**BE PHYSICALLY
ACTIVE**



UN INTERAGENCY
TASK FORCE ON NCDs



@un_ncd