

# COVID-19 Situation, Thailand

## 21 December 2022

Based on data as reported by the Ministry of Public Health

**4,718,908 confirmed cases**

**33,505 total deaths**

Daily average numbers reported from **11 -17 December 2022**



**488\*** new confirmed cases per day

\*(including hospital admissions only)



**16** deaths per day

### Main messages

| Continue to reduce community transmission of COVID-19 across Thailand |

| RTG encourages COVID-free settings and booster vaccinations |

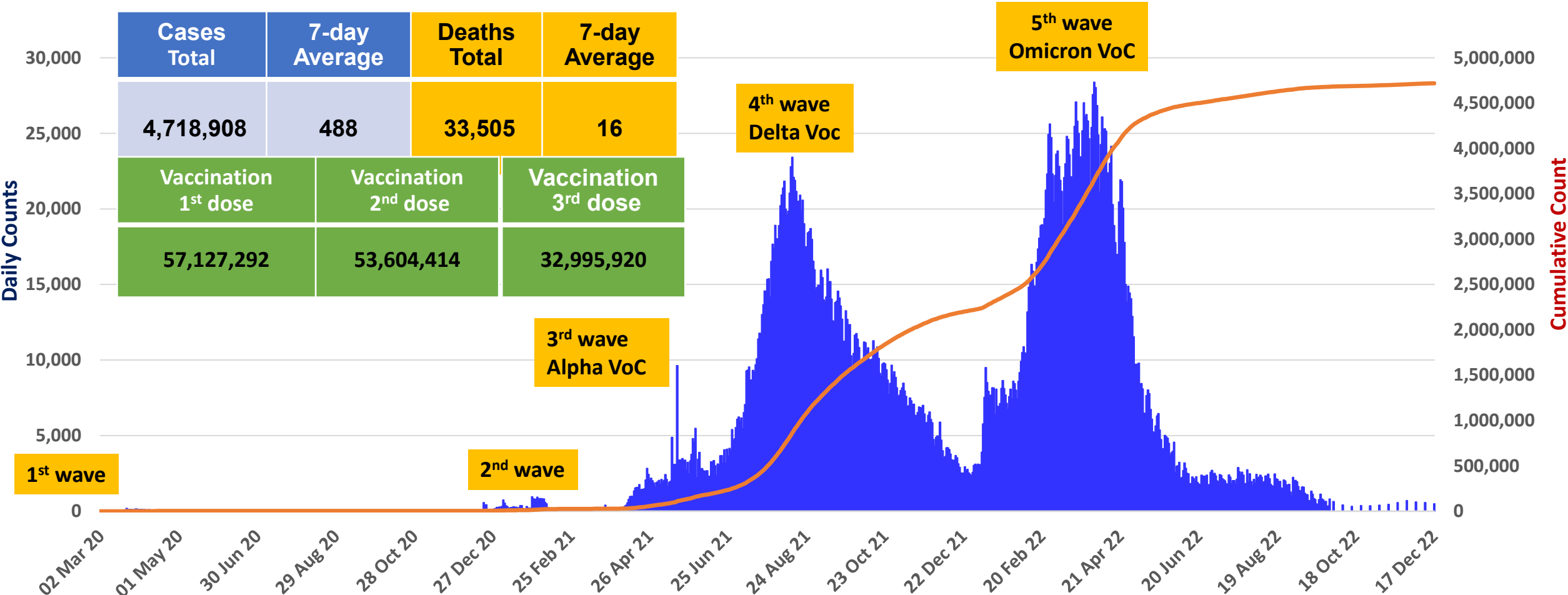
| Get vaccinated, maintain universal precautions and stay informed |



# National Situation

# Thailand COVID-19 cases, deaths and vaccinations to date: chart showing cases per day

## New Cases



Source: MoPH to 17 Dec 2022

■ New — Cumulative

[Back to Contents](#)

COVID-19 Update 22/12/2022

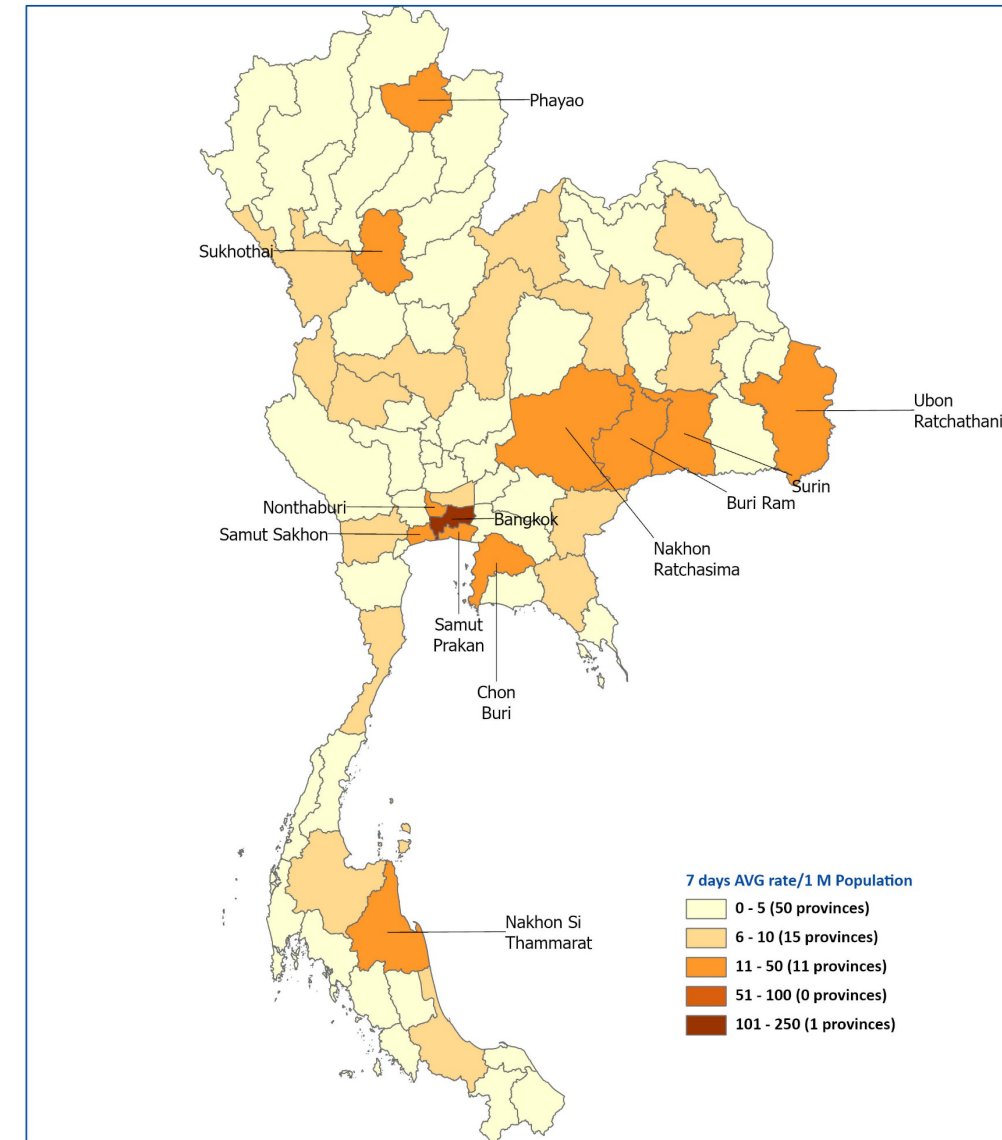


# New COVID-19 cases per million population by province

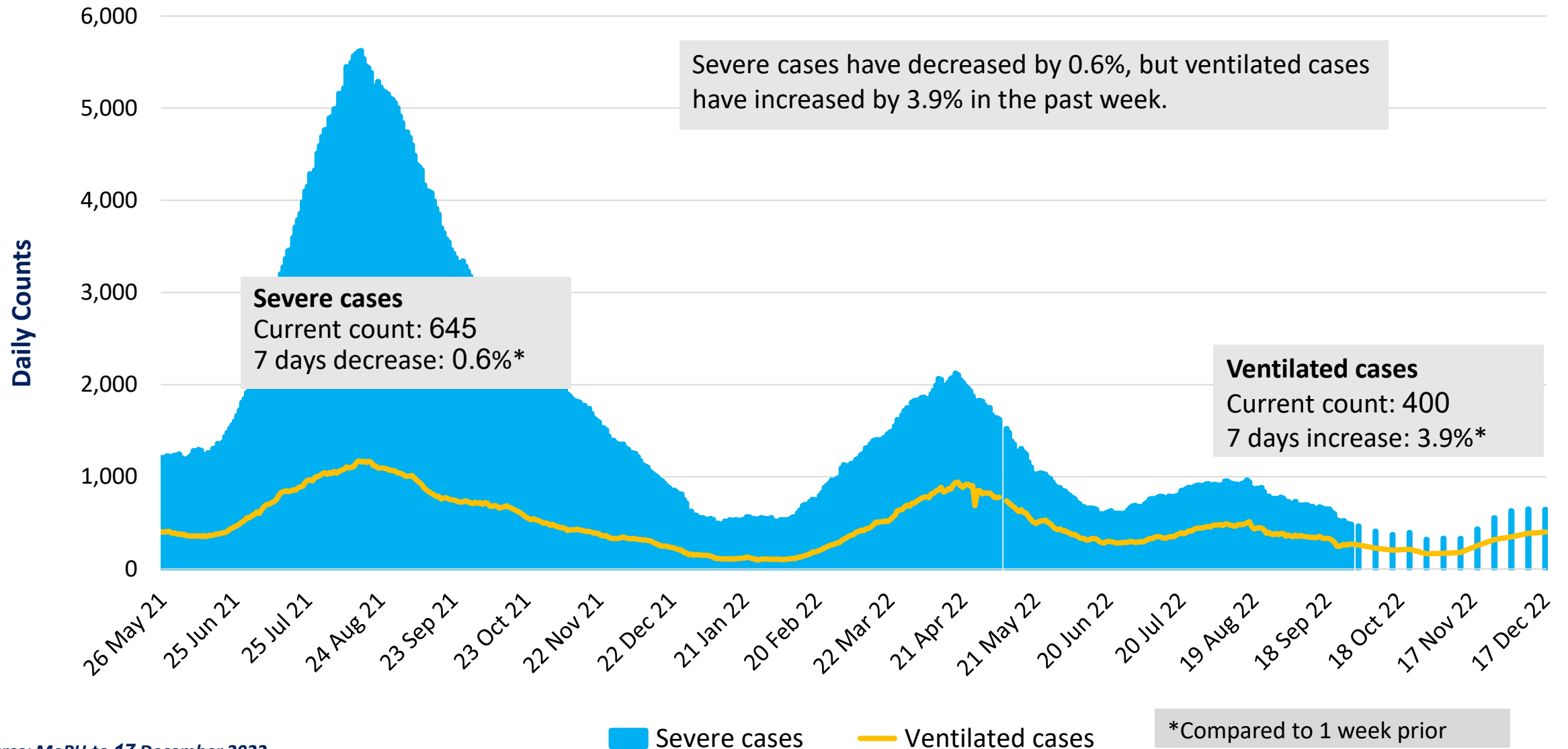
Daily COVID-19 cases have stabilised, but remain high in Bangkok, and significant numbers in some provinces in the North, the North-East and in the South of Thailand



Thailand COVID-19 new cases  
per 1,000,000 population by province  
from 11-17 December 2022

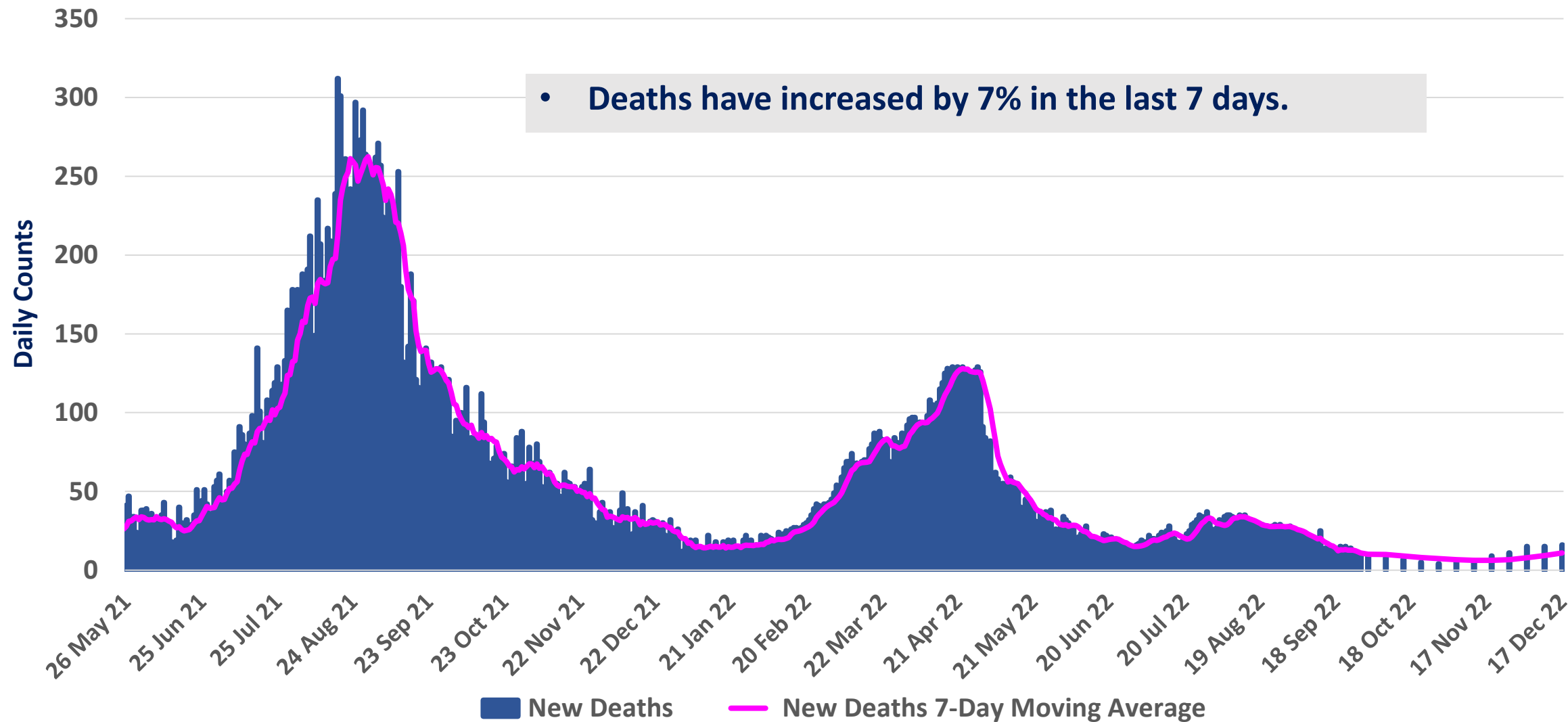


# Severe and ventilated COVID-19 cases



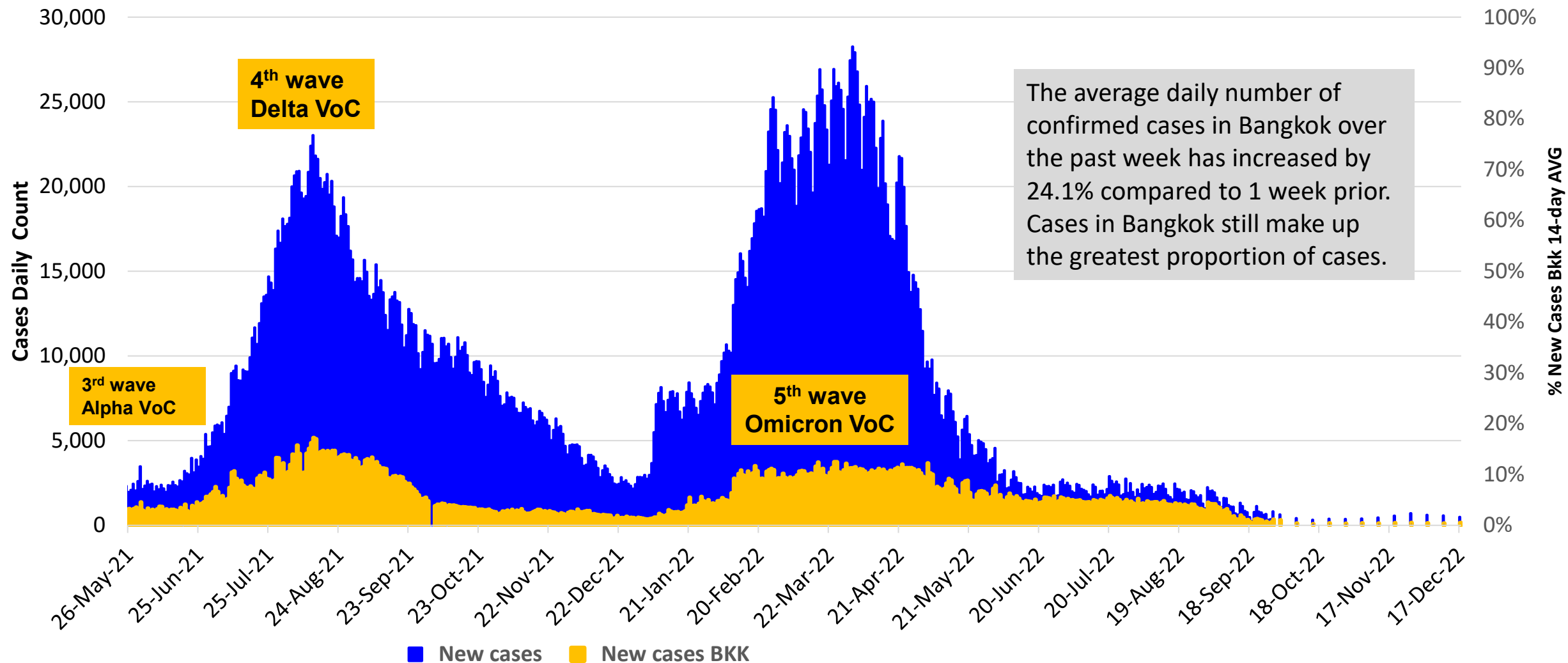
Source: MoPH to 17 December 2022

# COVID-19 deaths in Thailand



Source: MoPH to 17 Dec 2022

# Proportion of new COVID-19 cases in Bangkok relative to all cases



Source: MoPH: to 17 Dec 2022

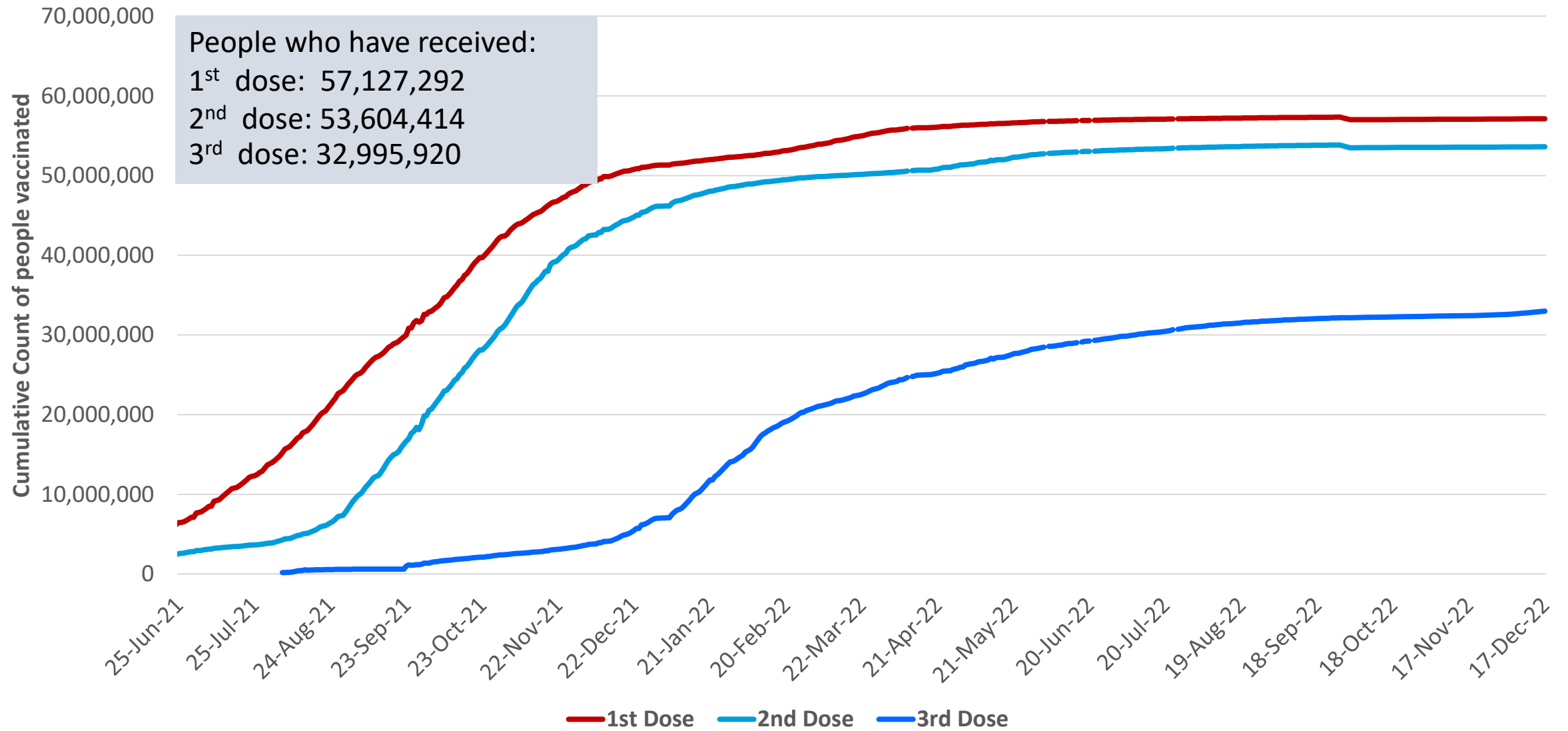
[Back to Contents](#)

COVID-19 Update 22-Dec-22

# Vaccination



# National COVID-19 Vaccination Coverage

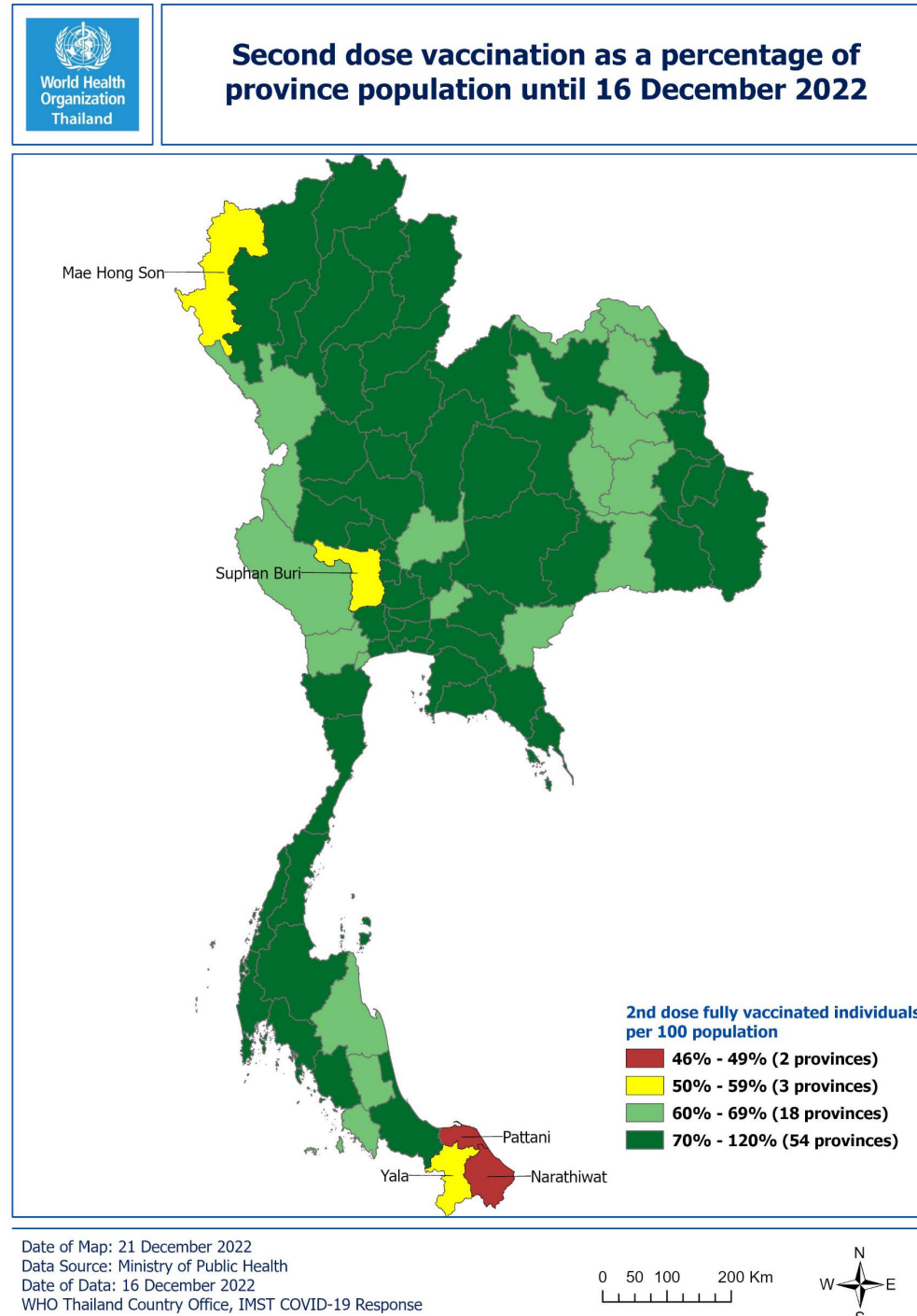


Source: MoPH to 17 Dec 2022

# Second dose coverage per million population by province

Fifty-four out of seventy-seven provinces report more than 70% 2-dose vaccination coverage.

Narathiwat and Pattani provinces in the far south continue to report less than 50% 2-dose vaccination coverage





As of 30 September 2022

# การเดินทางเข้าประเทศไทย Travelling to Thailand

ตั้งแต่วันที่ 1 ตุลาคม 2565  
from 1 October 2022 onwards

ยกเลิกการตรวจสอบเอกสารที่เกี่ยวข้องกับโรคโควิด-19  
อาทิ เอกสารรับรองการได้รับวัคซีน และผลตรวจหาเชื้อโควิด-19  
สำหรับผู้เดินทางเข้าประเทศไทย

Passengers will **no longer** be required to present COVID-19 related documents such as the certificate of vaccination and COVID-19 test result upon arrival in Thailand.



DCA

02-572-8442

Department of Consular Affairs  
Ministry of Foreign Affairs

[Back to Contents](#)

COVID-19 Update 22-Dec-22

# Update on public health measures and guidance

- CCSA has resolved.
- The Emergency Decree will not be extended.
- From **1 October 2022 onward**, MoPH will manage COVID-19 as a “**Disease under surveillance**” instead of a “**Dangerous infectious disease**”.
- **COVID-19 testing by using ATK will only be recommended for individuals with respiratory symptoms or suspicion of infection.** It does not recommend for asymptomatic individuals.
- **Mask wearing:** MoPH advises people to wear a mask in closed and poor ventilation setting such as **public transportation, hospitals, nursing care, and daycare.**
- If people have respiratory symptoms, they should practice Distancing, Mask wearing, Hand washing, Temperature checking, and Testing.
- MoPH advises workplaces to screen symptoms of COVID-19 among staff. The workplace should report cases to authorities if they detect a large number of staff getting sick.

## Sources:

CCSA's press briefing on 23 September 2022 (<https://www.facebook.com/search/top?q=pr%20thai%20government>; [https://media.thaigov.go.th/uploads/public\\_img/source/230965.pdf](https://media.thaigov.go.th/uploads/public_img/source/230965.pdf))

MoPH's press briefing on 24 September 2022 (<https://pr.moph.go.th/?url=pr/detail/2/04/179106/>; <https://www.facebook.com/photo/?fbid=466171622204753&set=pcb.466171658871416>)



# Close contact and case management

Close contact		Positive case	
Vaccinated	Unvaccinated	Vaccinated	Unvaccinated
Self-quarantine is not required		Patients in the “green category” (asymptomatic or mild symptoms) <b>will no longer be required to self-isolate</b> but will be advised to self-observe for 5 days and strictly practice DMHTT.	

## Sources:

- CCSA’s press briefing on 23 September 2022 (<https://www.facebook.com/search/top?q=pr%20thai%20government>; [https://media.thaigov.go.th/uploads/public\\_img/source/230965.pdf](https://media.thaigov.go.th/uploads/public_img/source/230965.pdf))
- Guidelines on COVID-19 clinical practice, diagnosis, treatment, and prevention of health workers dated 29 September 2022 ([https://covid19.dms.go.th/backend/Content/Content\\_File/Covid\\_Health/Attach/25650929131357PM\\_CPG\\_COVID-19\\_v.25\\_n\\_20220929.pdf](https://covid19.dms.go.th/backend/Content/Content_File/Covid_Health/Attach/25650929131357PM_CPG_COVID-19_v.25_n_20220929.pdf))

COVID-19 patients	Case management
Asymptomatic COVID-19 case	<ul style="list-style-type: none"> <li>Self-isolation is not required</li> <li>Self-observation 5 days, practice DMHTT strictly</li> </ul>
COVID-19 case with mild symptoms, without pneumonia, and no risk factors	
COVID-19 case with mild symptoms but with risk factors or mild pneumonia	<ul style="list-style-type: none"> <li>Self-observation 5 days, practice DMHTT strictly <b>OR</b></li> <li>Hospitalization (as per physician's discretion)</li> </ul>
COVID-19 case with pneumonia	<ul style="list-style-type: none"> <li>Hospitalization</li> </ul>

COVID-19 treatment scheme and reimbursement are back to pre-COVID time

**Sources:**

- MoPH's press briefing on 26 September 2022(<https://pr.moph.go.th/?url=pr/detail/2/04/179106/>)
- Guidelines on COVID-19 clinical practice, diagnosis, treatment, and prevention of health workers dated 29 September 2022 ([https://covid19.dms.go.th/backend/Content/Content\\_File/Covid\\_Health/Attach/25650929131357PM\\_CPG\\_COVID-19\\_v.25\\_n\\_20220929.pdf](https://covid19.dms.go.th/backend/Content/Content_File/Covid_Health/Attach/25650929131357PM_CPG_COVID-19_v.25_n_20220929.pdf))

[Back to Contents](#)

COVID-19 Update 22-Dec-22

## USEFUL LINKS

- The Thailand COVID19 situation report is available in Thai and English, please [visit](#)
- For regular updates on WHO's response in Thailand, please [visit](#)
- For global figures and technical advice from WHO, please [visit](#)

**World Health Organization Country Office for Thailand**  
4th Fl., Permanent Secretary Bldg.3 Ministry of Public Health,  
Nonthaburi, Thailand, 11000. [sethawebmaster@who.int](mailto:sethawebmaster@who.int)



[www.who.int/thailand](http://www.who.int/thailand)



@WHO Thailand

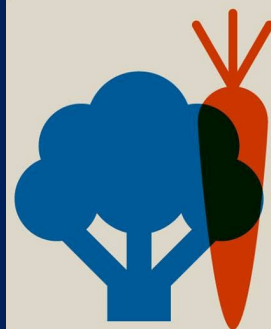


WHO Thailand



WHO Thailand

# STAY HEALTHY TO BEAT COVID-19



**EAT A  
HEALTHY DIET**



**AVOID  
ALCOHOL**



**QUIT  
TOBACCO**



**BE PHYSICALLY  
ACTIVE**



UN INTERAGENCY  
TASK FORCE ON NCDs



@un\_ncd