

# Coronavirus disease 2019 (COVID-19)

## WHO Thailand Situation Report – 17 April 2020

Data as reported by the Thai Ministry of Public Health

### HIGHLIGHTS

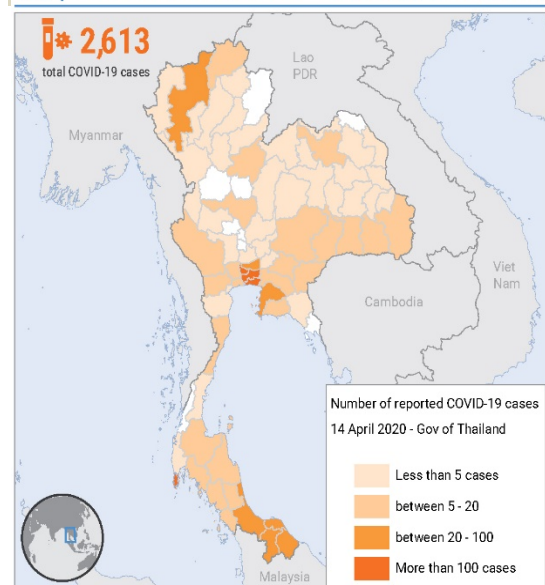
- On the 17<sup>th</sup> of April 2020, 28 new cases of laboratory-confirmed COVID-19 were announced by the Ministry of Public Health of Thailand, bringing the total number of cases to 2,700.
- Of these, more than 62% (1,689) have recovered, about 1.7% (47) have died, and almost 36% (964) are receiving treatment.
- No cases were identified in people returning from outside Thailand; likely reflecting restrictions on entry.
- A total of 16 of the new cases are close contacts of previously confirmed cases. Five cases either attended crowded places or had occupational exposure to large numbers of people.
- To date, 68 of the total 77 provinces have reported cases. Twenty-seven provinces have not reported any new cases during the past 14 days. Bangkok has the highest number of cases (1,371), followed by Phuket (192) and Nonthaburi (148).
- The total number of infected healthcare workers remains at 102 (4% of all cases). Out of the 38 healthcare workers infected in the past 2 weeks, 28 (74%) had been providing direct care to patients, six (16%) had close contact at work with other infected healthcare workers and one (2%) worked to screen and triage patients. For three cases, risk exposure is not specified. Ratio of healthcare worker infections was female 2.54: male 1.
- Information has also been made available on COVID-19 deaths in Thailand:
  - Mortality rate by sex: male 2.7% and female 0.7%
  - Mortality rate by age groups:
 

0-9	0.0%	40-49	1.9%
10-19	0.0%	50-59	4.0%
20-29	0.2%	60-69	3.7%
30-39	0.6%	>70	12.1%
  - Co-morbidities of COVID-19 deaths are diabetes (41%), hypertension (36%), dyslipidemia (18%), heart disease (14%), kidney disease (9%), obesity (7%) and others (14%).

### THAILAND SITUATION in the last 24 hours

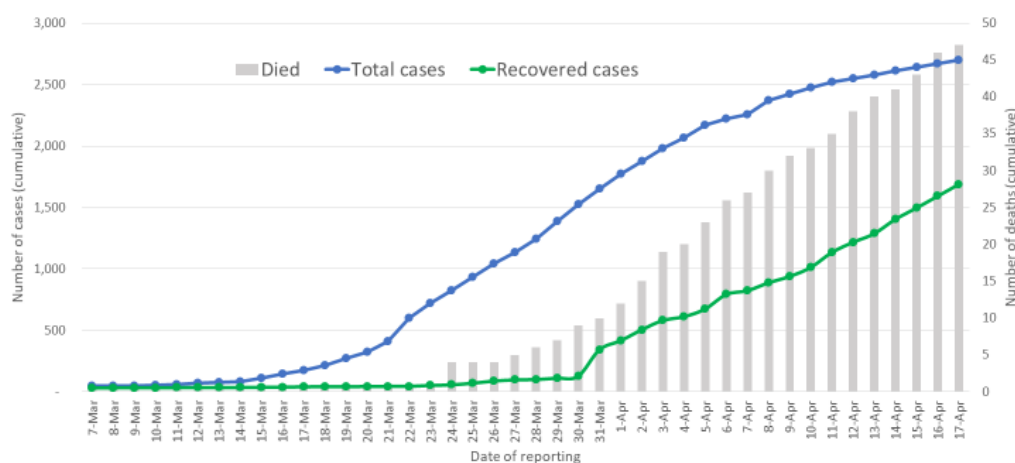
2,700 confirmed (28 new)  
47 deaths (1 new)  
964 people hospitalized  
102 healthcare staff infected  
1,689 recovered

### THAILAND: COVID-19 cases (as of 14 April 2020)



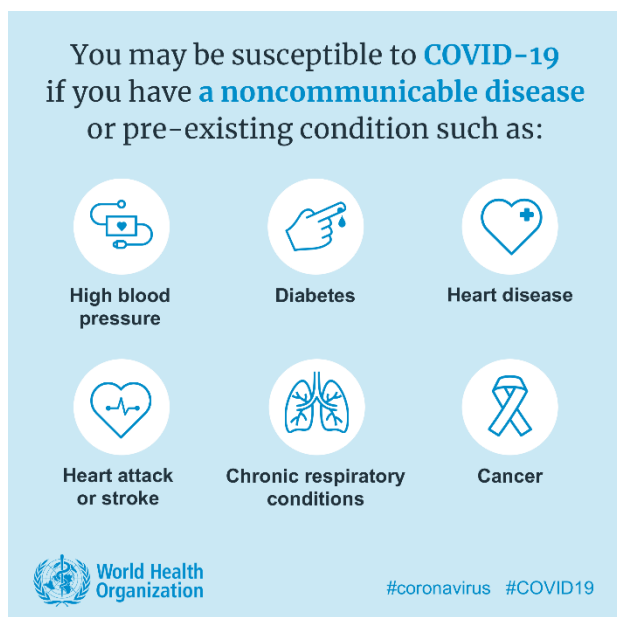
Map Sources: UN Cartographic Section, Royal Thai Survey Dept., Gov of Thailand

### COVID-19 cases in Thailand, by date of reporting



Source: MoPH, 17 April 2020

## EXPLAINER: COVID-19 and non-communicable diseases



People with pre-existing non-communicable diseases (NCDs) appear to be more vulnerable to becoming severely ill with the virus. These NCDs include: cardiovascular disease (e.g. hypertension, persons who have had, or are at risk for, a heart attack or stroke); chronic respiratory disease (e.g. COPD); diabetes, cancer, or chronic kidney disease.

If you have a pre-existing condition:

- Continue taking your medication and follow medical advice
- Do not go out unless essential, e.g. for medical care
- Maintain a distance from others
- Wash your hands frequently with soap and water
- Avoid touching your eyes and nose
- Maintain a healthy lifestyle by eating a healthy diet, staying active, quitting smoking, avoiding alcohol, getting enough sleep and safeguarding your mental health

## WHAT WHO IS DOING TO PROVIDE SUPPORT TO THAILAND

WHO Thailand remains in frequent direct contact with the Royal Thai Government through the Ministry of Public Health, sharing information on key developments, guidelines and scientific updates.

WHO supports the wider UN response, including working with key partners and the Ministry of Public Health to support migrant populations in Thailand. WHO also provides information and advice to staff of the UN system in Thailand.

## MEDIA

WHO Thailand's [website](#), [Twitter](#) and [Facebook](#) accounts, regularly provide content on all aspects of the outbreak in Thailand and around the world. Media queries can be directed to [sethawebsite@who.int](mailto:sethawebsite@who.int) and [kanpirom@who.int](mailto:kanpirom@who.int)

## USEFUL LINKS

- The Thailand COVID19 situation report is available in Thai and English at <http://covid19.th-stat.com/en>.
- For regular updates on WHO's response in Thailand, please visit [www.who.int/thailand](http://www.who.int/thailand)
- For global figures and technical advice from WHO please [visit](#).