

Coronavirus disease 2019 (COVID-19)

WHO Thailand Situation Report – 18 April 2020

Data as reported by the Thai Ministry of Public Health

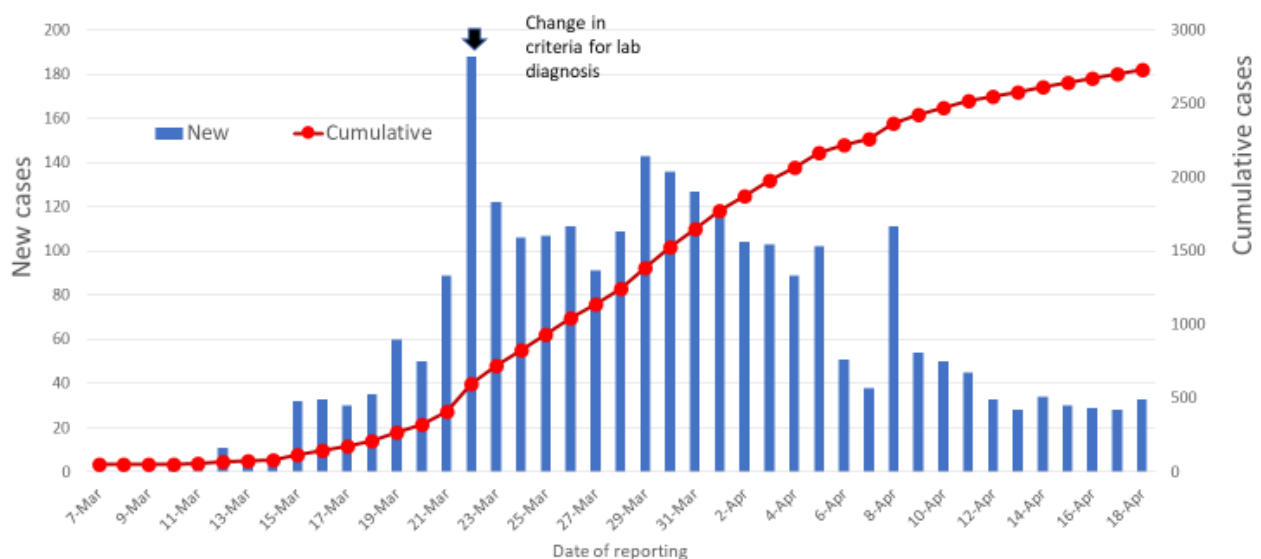
HIGHLIGHTS

- On the 18th of April 2020, 33 new cases of laboratory-confirmed COVID-19 were announced by the Ministry of Public Health of Thailand, bringing the total number of cases to 2,733.
- Of these, more than 65% (1,787) have recovered, about 1.7% (47) have died, and almost 33% (899) are receiving treatment.
- Only four cases were identified in people returning from outside Thailand; likely reflecting restrictions on entry.
- A total of 11 of the new cases are close contacts of previously confirmed cases; all were identified in Bangkok. Six cases either attended crowded places or had occupational exposure to large numbers of people.
- One new case was in a healthcare worker: bringing the total number to 103 (4% of all cases)
- The risk factors of the 47 cases who died are
 - 9 had contact with confirmed cases
 - 9 had been in crowded areas
 - 7 had occupational risks
 - 7 returned from other countries (Malaysia, UK, Pakistan, Indonesia)
 - 5 had been to boxing stadiums
 - 3 had contacts with foreigners or had been to health facilities
 - 7 unknown
- To date, 68 of the total 77 provinces have reported cases. Bangkok has the highest number of cases (1,401), followed by Phuket (192) and Nonthaburi (150).
- Twenty-nine provinces have reported no new cases during the past 14 days and nine provinces have never reported cases; suggesting that transmission in almost half of all jurisdictions (38 of 77) are under control.

THAILAND SITUATION in the last 24 hours

2,733 confirmed (33 new)
47 deaths
899 people hospitalized
103 healthcare staff (1 new)
1,787 recovered

New and cumulative COVID-19 cases in Thailand, by date of reporting



Source: MoPH, 18 April 2020

UPDATE FROM THE MINISTRY OF PUBLIC HEALTH

Surgical masks

- Ministry of Public Health (MoPH) health facilities have 11,077,257 surgical masks in stock; enough for 27 days.
- Recently an average of 1.3 million surgical masks were distributed per day

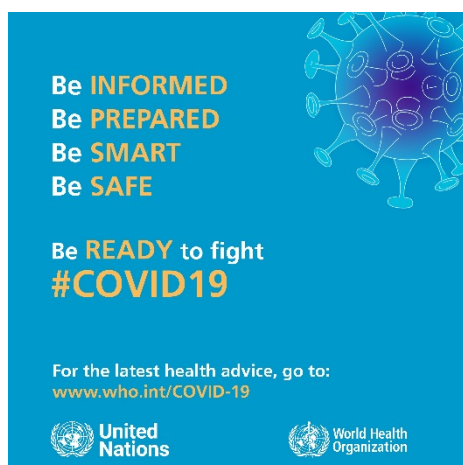
N95 respirators

- The MoPH aims to procure 5 million N95 respirators for healthcare workers at high risk of COVID-19 patients; recently the demand has been approximately 35,100 per day.
- As of 17th April, GPO had stock of 87,830 N95 respirators and has ordered another 340,000

PPE

- The MoPH aims to procure 5 million pieces of PPE. Recently demand has been 35,100 pieces per day.
- As of 17th April, GPO had stock of 11,655 cover-all gowns and 3,266 isolation gowns. Capacity for local production of re-usable gowns is being developed.

ADVICE FOR THE PUBLIC



While debates continue about lifting restrictions designed to slow the COVID-19 infection rate, it is important to remember that the danger has not passed.

While some gains have been made in reducing the number of new cases, we cannot relax our guard.

It is just as important now as it was the beginning of the outbreak to follow basic precautions such as handwashing, respiratory hygiene and physical distancing.

Read and share our poster on ways to protect yourself and others.

WHAT WHO IS DOING TO PROVIDE SUPPORT TO THAILAND

WHO Thailand is in frequent direct contact with the Royal Thai Government through the Ministry of Public Health, sharing information on key developments, guidelines and scientific updates.

WHO supports the wider UN response, including working with key partners and the Ministry of Public Health to support migrant populations in Thailand. WHO also provides information and advice to staff of the UN system in Thailand.

MEDIA

WHO Thailand's [website](#), [Twitter](#) and [Facebook](#) accounts, regularly provide content on all aspects of the outbreak in Thailand and around the world. Media queries can be directed to sethaweabmaster@who.int and kanpirom@who.int

USEFUL LINKS

- The Thailand COVID19 situation report is available in Thai and English at <http://covid19.th-stat.com/en>.
- For regular updates on WHO's response in Thailand, please visit www.who.int/thailand
- For global figures and technical advice from WHO please [visit](#).