

# Coronavirus disease 2019 (COVID-19)

Data as reported by the Thai Ministry of Public Health



World Health  
Organization  
Thailand

12 May 2020

## WHO Thailand Situation Report



**3,017**  
Confirmed  
(2 new)



**56**  
Deaths  
(0 new)



**163**  
Hospitalized



**2,798**  
Recovered

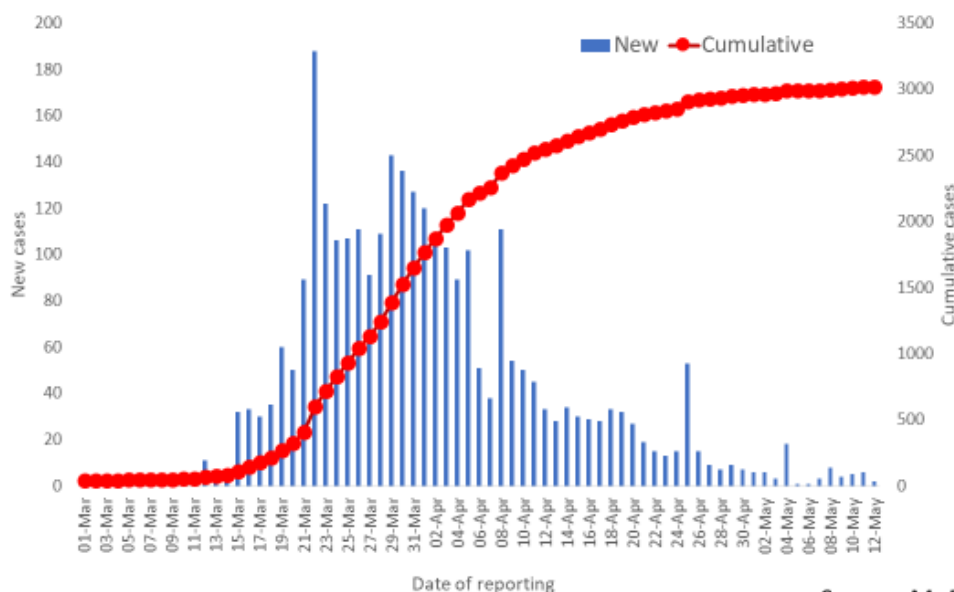


**THAILAND  
SITUATION  
IN THE PAST  
24 HOURS**

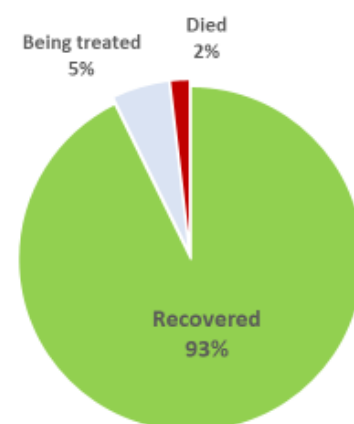
## SPOTLIGHT

- On the 12th of May 2020, two new cases of laboratory-confirmed COVID-19 were announced by the Ministry of Public Health (MOPH) of Thailand, bringing the total number of cases to 3,017.
- No new deaths were reported today.
- The two new cases reported today had close contact with family members who were previously confirmed as being infected with COVID-19. Physical distancing among family members remains an important measure to prevent COVID-19 infection.
- To date, 68 of 77 provinces have reported cases. Nine provinces have never reported any cases.
- 50 provinces have no new cases reported in the past 28 days. Only 18 provinces have ongoing cases, reported in the past 28 days.
- Based on confirmed cases, the leading risk factors for COVID-19 infection in the past two weeks are: close contact with previously confirmed cases; confinement in Immigration Detention Centres and visiting crowded places.
- Currently the majority of infected persons are being detected through active case finding in the community, and among Thai returnees from abroad being held in quarantine.
- To further reduce risk of infection once low-risk public venues - such as markets – reopen, the Centre for COVID-19 Situation Administration (CCSA) has requested service providers and members of the public to strictly follow the recommended measures such as hand hygiene, wearing face masks and physical distancing.

New and cumulative COVID-19 cases in Thailand,  
by date of reporting



Treatment outcomes of  
COVID-19 patients (n=3017)



Source: MoPH, 12 May 2020

# UPDATE FROM THE MINISTRY OF PUBLIC HEALTH

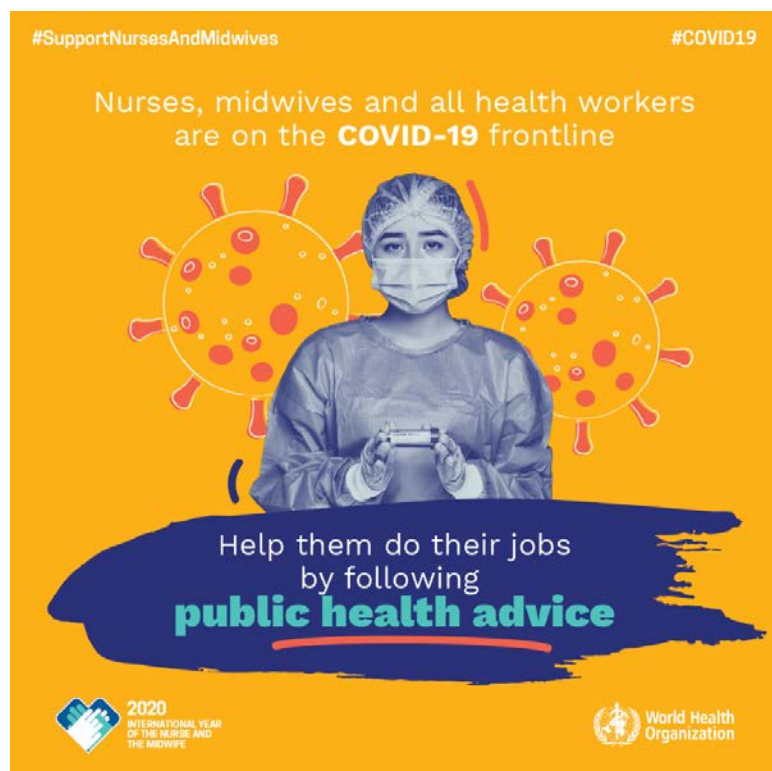
## Testing

As of 8<sup>th</sup> May, a total of 286,008 samples were tested for COVID-19 by RT-PCR. This is equivalent to 4,294 tests per 1 million Thai people. The positive rate was 1.05% (3000 out of 286,008 samples showed a positive result).

## Nursing and COVID-19

- On the occasion of International Nurses Day (12 May) the World Health Organization has declared 2020 as the International Year of the Nurse and the Midwife.
- The Ministry of Public Health of Thailand highlighted the role that nurses play in treating and caring for patients with COVID-19 and the synergy between hospital and community nurses working together to provide seamless care to all patients.
- MOPH has set up a Coordination Centre to oversee the work of nurses in supporting COVID-19 with all 12 Regional Health Service Centres across the country.
- Guidelines to manage the provision of nursing care for confirmed or suspected COVID-19 cases have been established.

## ADVICE FOR THE PUBLIC



On the occasion of the International Day of the Nurse and the 200th anniversary of the birth of Florence Nightingale, the World Health Organization highlights the importance of nurses in the healthcare continuum and thanks nurses for what they do.

Nurses are often the first- and sometimes the only - health professional that people see and the quality of their initial assessment, care and treatment is vital.

The Covid-19 pandemic is a stark reminder of the vital role nurses play. Without nurses and other health workers, we will not win the battle against outbreaks.

## WHAT WHO IS DOING TO PROVIDE SUPPORT TO THAILAND

WHO Thailand is in frequent direct contact with the Royal Thai Government through the Ministry of Public Health, sharing information on key developments, guidelines and scientific updates.

WHO supports the wider UN response, including working with key partners and the Ministry of Public Health to support migrant populations in Thailand. WHO also provides information and advice to staff of the UN system in Thailand.



- The Thailand COVID19 situation report is available in Thai and English, please [visit](#).
- For regular updates on WHO's response in Thailand, please [visit](#).
- For global figures and technical advice from WHO, please [visit](#).

**World Health Organization Country Office for Thailand**  
4th Fl., Permanent Secretary Bldg.3 Ministry of Public Health,  
Nonthaburi Thailand, 11000

Media queries [sethaweabmaster@who.int](mailto:sethaweabmaster@who.int) and [kanpirom@who.int](mailto:kanpirom@who.int)



**For latest updates and resources, please visit:**

 [www.who.int/thailand](http://www.who.int/thailand)

 [@WHOThailand](https://twitter.com/WHOThailand)

 [WHOThailand](https://www.facebook.com/WHOThailand)

 [WHOThailand](https://www.youtube.com/WHOThailand)