

# Moras virus Corona 2019 (COVID-19)

Relatóriu Situasaun – 120

## Timor-Leste



World Health  
Organization

Timor-Leste

- Dadus relata to'o loron 05 Outubru 2021

### SITUASAUN IHA NÚMERU

#### TIMOR-LESTE



Kumulativu  
**19,609 (164)**



Rekuperadu (foun)  
**19,050 (554)**



Kazu ativu  
**440**



Óbitu (foun)  
**119 (5)**

#### PROGRESU IMUNIZASAUN COVID-19



Doze 1<sup>a</sup> – **463,644**  
Kobertura – **61.4%**



Doze 2<sup>a</sup> – **289,124**  
Kobertura – **38.3%**

\* Bazeia ba dadus ne'ebé públika husi [Ministerio da Saúde](#)

#### GLÓBÁL



Kazu  
**234,809,103**



Óbitu  
**4,800,375**

#### PROGRESU IMUNIZASAUN COVID-19



Doze vasina  
**6,188,903,420**

### SUMÁRIU

- Dezde edisaun ikus relatóriu situasaun, Ministeriu Saúde relata tan kazu foun COVID-19 hamutuk **164**, kazu rekuperadu hamutuk **554** no kazu óbitu **5**. Enkuandu númeru kazu sira ne'e hatudu sinál komesa menus, maibé kazu óbitu kontinua nafatin dezde fulan Agostu.
- Ministériu Saúde hamutuk ho Uniaun Europeia no OMS inagura facilidade foun ba família pasiente iha Ospital Lahane, ne'ebé foin lalais ne'e halo renovasaun. Konstrusaun ba facilidade ba família pasiente nian ne'e tanba hetan apoiu finanseiru jenerozu husi Uniaun Europeia liuhusi kolaborasaun serbisu entre OMS no UE hodi haforsa serbisu nasionál responde ba COVID-19 no atu hodi haforsa kapasidade ba jestaun kazu krítiku iha ospital referénsia rejionál lima iha rai laran.
- Ida ne'e hanesan inisiativu úniku dahuluk hodi kombate moras tuberkuloze (TB), Ministériu Saúde ho apoiu husi OMS, realiza serimonia asinatura kompromisu ba moras TB. S.E Primeiru Ministru Taur Matan Ruak asina plaka kompromisu ne'ebé maka prevee apoiu kompreensivu no asaun sira hodi "Hapara TB" iha Timor-Leste. Iha eventu hanesan, Primeiru Ministru mós iha tempu hanesan lansa "Planu Asaun Nasionál hodi Aselera Hapara TB iha tinan 2025".

- MS, ho finansia husi Uniaun Europeia no apoiu tékniku husi OMS hala’o formasaun ba vijilánsia no ekipa responde rápida (ERR) iha nivel munisípiu. Ida ne’e hodi haforsa liután kapasidade pesoál saúde liña frente ba investigasaun kazu, rastreiu kontaktu, kuarentena, no koleasaun amostra.
- UNICEF fó apoiu ba SAMES no MS hodi halo instalasaun no teste ba *ultra-cold freezer* ne’ebé simu iha loron 22 Setembru. UNICEF mós fó apoiu tékniku ba tékniku SAMES hodi dezenvolve grafíku monitorizasaun temperatura hodi monitoriza temperatura sistema dala tolu iha loron ida. Alende ne’e, UNICEF mós fó apoiu orientasaun online ida ba tékniku husi SAMES kona-ba *freezer ULT*, nia funsionamentu, manutensaun no hadia.
- OMS no UNICEF fó apoiu tékniku ba enkontru avaliasaun iha nivel munisipal. Enkontru avaliasaun ne’e hala’o iha loron Segunda iha munisípiu Manatuto hodi identifika problema ho buka solusaun hamutuk.
- OMS fó apoiu tékniku ba MS, dezenvolve Estratéjia Nasionál Ai-han Seguru hodi haforsa kontrolu nasionál nian ba seguransa ai-han, no hamenus moras kauza husi hahan. Estratéjia Nasionál Ai-han Seguru ne’e mós iha tempu hanesan disemina entre *stakeholder* sira hamutuk no materiais edukasaun komunikasaun “Xave 5 ba ai-han seguru” ne’ebé maka kompostu husi video no materiais imprime sira. Governu Timor-Leste foti ona medidas importante balun hodi asegura disponibilidade ai-han seguru, iha qualidade no nutritivu.

## ATUALIZASAUN EPIDEMIOLOGIA

- Kazu COVID-19 kumulativu no kazu foun**

- Númeru kazu foun aumenta tuun beibeik iha relatóriu kazu atuál. Iha kazu foun 164 durante loron hitu ikus kompara ho kazu relata semana kotuk (21-28 Setembru 2021), iha redusaun 49%.
- Kazu konfirmadu COVID-19 kumulativu 19,609 ne'ebé maka relata dezde kazu relata iha fulan Marsu 2020. Maibé, maioria kazu (99%) relata depois fulan Marsu 2021.

- Distribusaun kazu no kazu óbitu tuir munisípiu**

Distribusaun kazu foun ne'ebé relata, kazu rekuperadu no kazu ativu tuir munisípiu, to'o loron 05 Outubru 2021

Munisípiu	Kazu foun (29 Sept – 5 Out 2021)	Loron 7 - mudansa % (kazu)*	Kazu kumulativu	Kazu rekuperadu (29 Sept – 5 Out 2021)	Kazu rekuperadu kumulativu	Kazu óbitu foun (29 Sept – 5 Out 2021)	Loron 7 - mudansa % (kazu)*	Kazu óbitu kumulativu	Kazu ativu (5 Out 2021)
Aileu	0	0	126	0	125	0	-100	1	0
Ainaro	0	-100	227	1	224	0	0	3	0
Baucau	77	-1	1528	165	1418	1	0	7	103
Bobonaro	8	-60	585	11	510	0	0	9	66
Covalima	1	0	773	101	758	0	0	2	13
Dili	55	-66	13593	213	13320	1	-50	79	194
Ermera	0	0	1113	0	1111	0	0	2	0
Lautem	0	-100	182	0	150	0	-100	5	27
Liquica	0	-100	125	7	123	0	0	1	1
Manatuto	1	-88	203	10	200	1	0	2	1
Manufahi	1	-83	262	10	262	0	0	0	0
RAEOA	19	-10	384	27	352	2	100	3	29
Viqueque	2	-83	508	12	497	0	-100	5	6
<b>TOTAL</b>	<b>164</b>	<b>-49</b>	<b>19609</b>	<b>557</b>	<b>19050</b>	<b>5</b>	<b>-29</b>	<b>119</b>	<b>440</b>

\*Change in new COVID-19 cases as compared with the previous 7 days

\*\*Change in new COVID-19 related deaths as compared with the previous 7 days

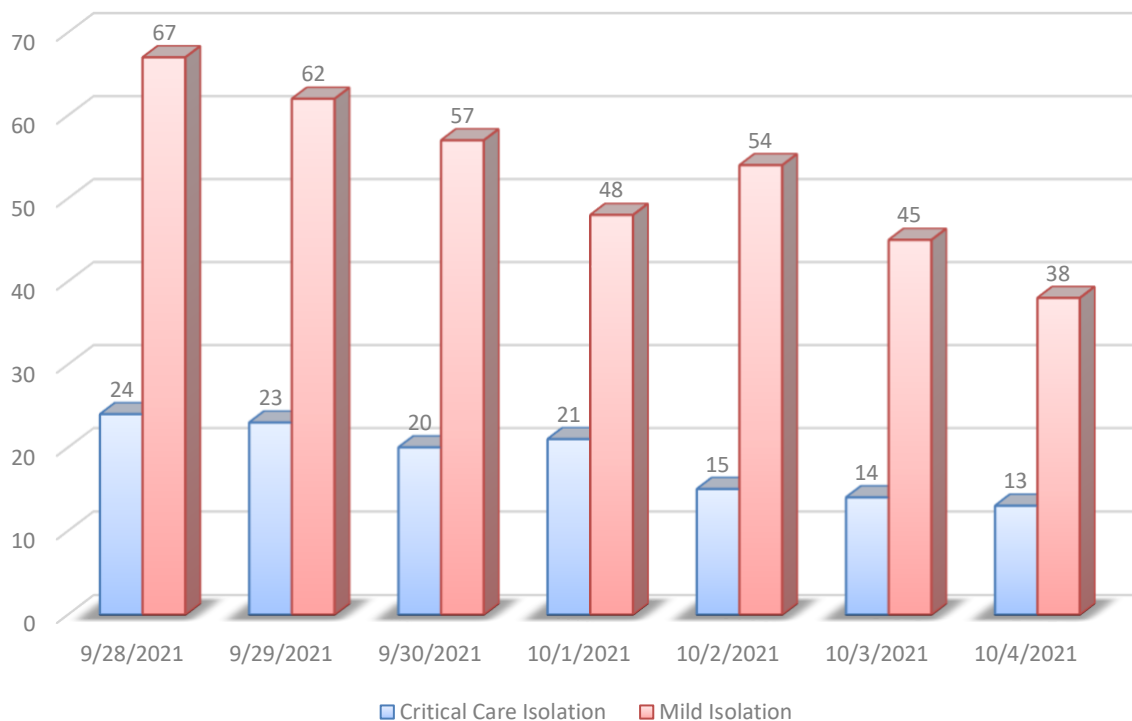
- Númeru kazu relata husi data relata (29 Setembru – 5 Outubru) tuun to'o 49%. Munisípiu hotu relata kazu komesa menus. Maibé, Baucau no Oecusse hamutuk ho Dili, kontinua relata númeru kazu boot.

- Iha kazu óbitu 5 mak relata ba periodu ida ne'e, redusaun 29% kompara ho loron hitu ikus liuba. Relata kazu mate nain ida husi munisípiu Dili, Baucau no Manatuto, no nain rua husi Oecusse.
- **Teste diáriu, taxa pozitivu no taxa teste positividade**
  - Durante data relatóriu atuál ida ne'e husi 29 September to'o 5 Outubru, halo ona teste ba amostra 2,418, kompara ho teste 3,571 iha loron 7 ikus.
  - Taxa teste positividade husi periodu relatóriu ida ne'e iha médiu entre 6.9% kompara ho taxa positividade 9%, ho redusaun 22.9%.
  - Maibé, taxa teste positividade loron 7 ida ne'e kontinua aas nafatin husi nivel 5%.

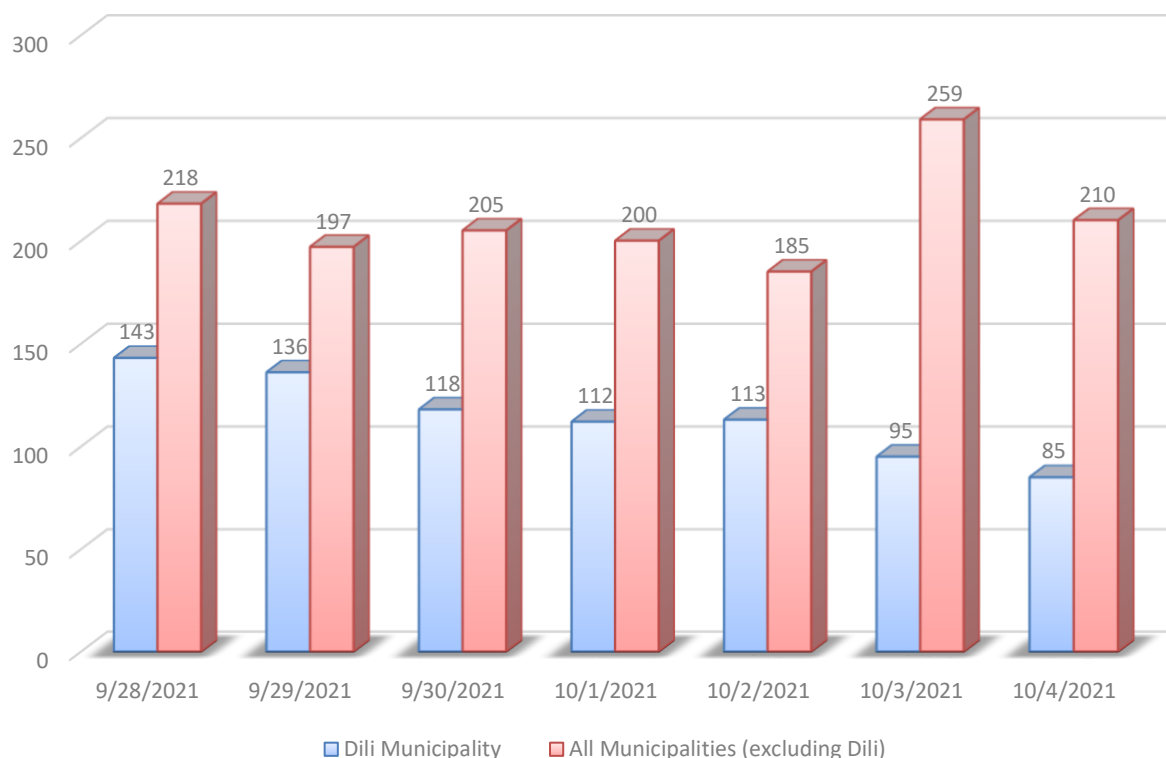
## JESTAUN KAZU COVID-19

- Númeru pasiente tama izolamentu hahú menus iha fulan Setembru 2021 nia laran. Númeru pasiente ne'ebé baixa iha sentru izolamentu krítiku (Lahane no Vera Cruz) mós kontinua menus no pasiente baixa iha entre 10 – 30. Dezde inisiu konfinamentu obrigatóriu 27 Agostu, persentajen baixa komesa tuun ba 90% iha sentru izolamentu sira.

Dili Isolation



Timor-Leste isolation and auto-isolation



- Gráfiku ida ne'e hatudu númeru pasiente ne'ebé tama sentru izolamentu ho halo auto-izolamentu iha munisípiu 12 kompara ho Dili. Iha territóriu tomak, númeru pasiente sira ne'ebé tama baixa iha sentru izolamentu kontinua tuun.

## IMUNIZASAUN COVID-19

Iha periodu relatóriu ida ne'e, total doze vasina COVID-19 ne'ebé administra 752,768 kompostu husi doze dahuluk 463,644 (kobertura 61.4%) no doze daruak 289,124, (kobertura 38.3%) maka administra ona iha territóriu tomak iha Timor-Leste. Detallu husi númeru doze vasina ne'ebé administra ona ba doze dahuluk no doze daruak ba populasaun grupu prioridade sira bele refere ba Tabela 1.

Tabela 1: Número de doses de vacina COVID-19 administradas e a cobertura em Dili no Timor-Leste, atualizada às 10:00h 05/10/2021

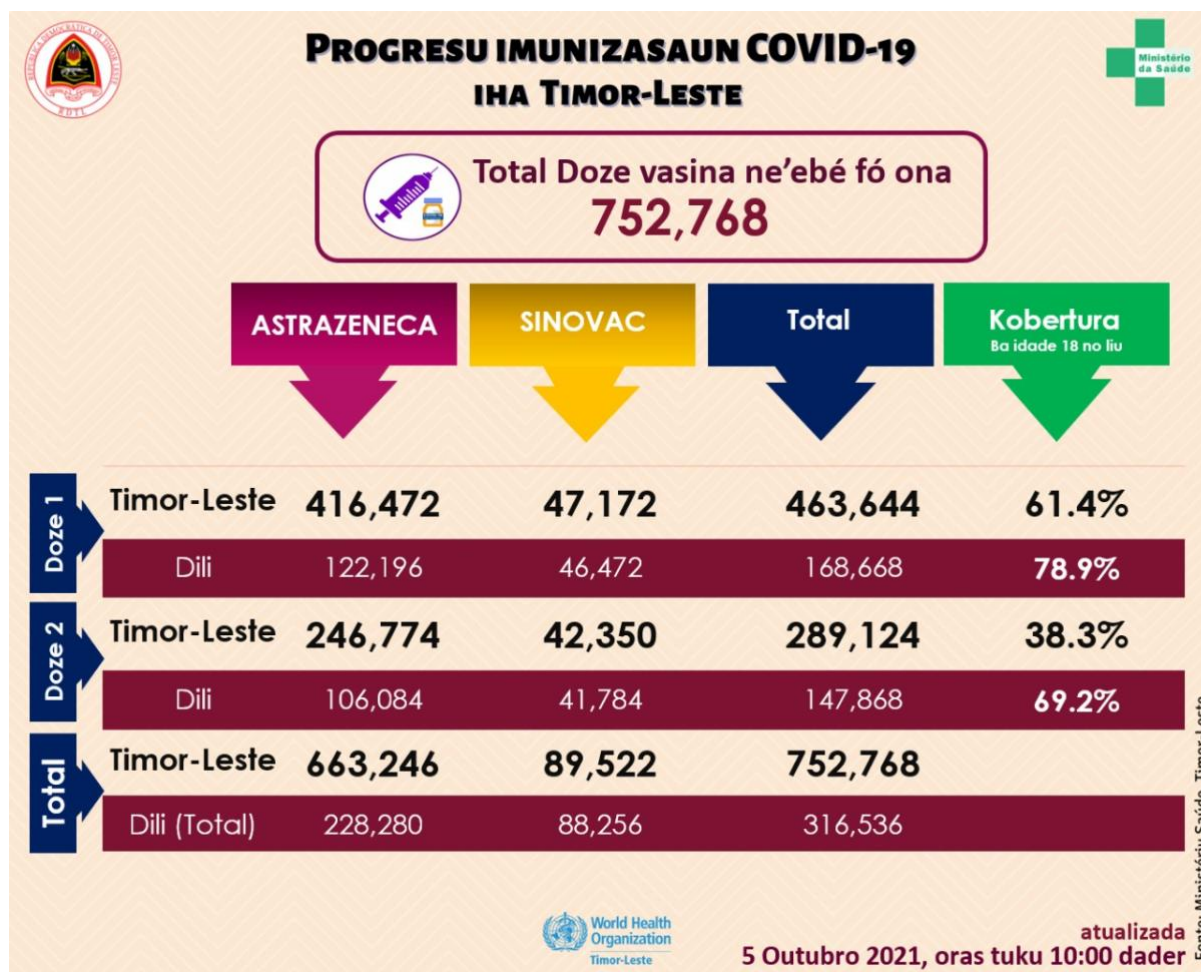


Figura 1: Kobertura vasina COVID-19 tuir munisípiu iha Timor-Leste atualizada 10:00 hrs 05/10/2021

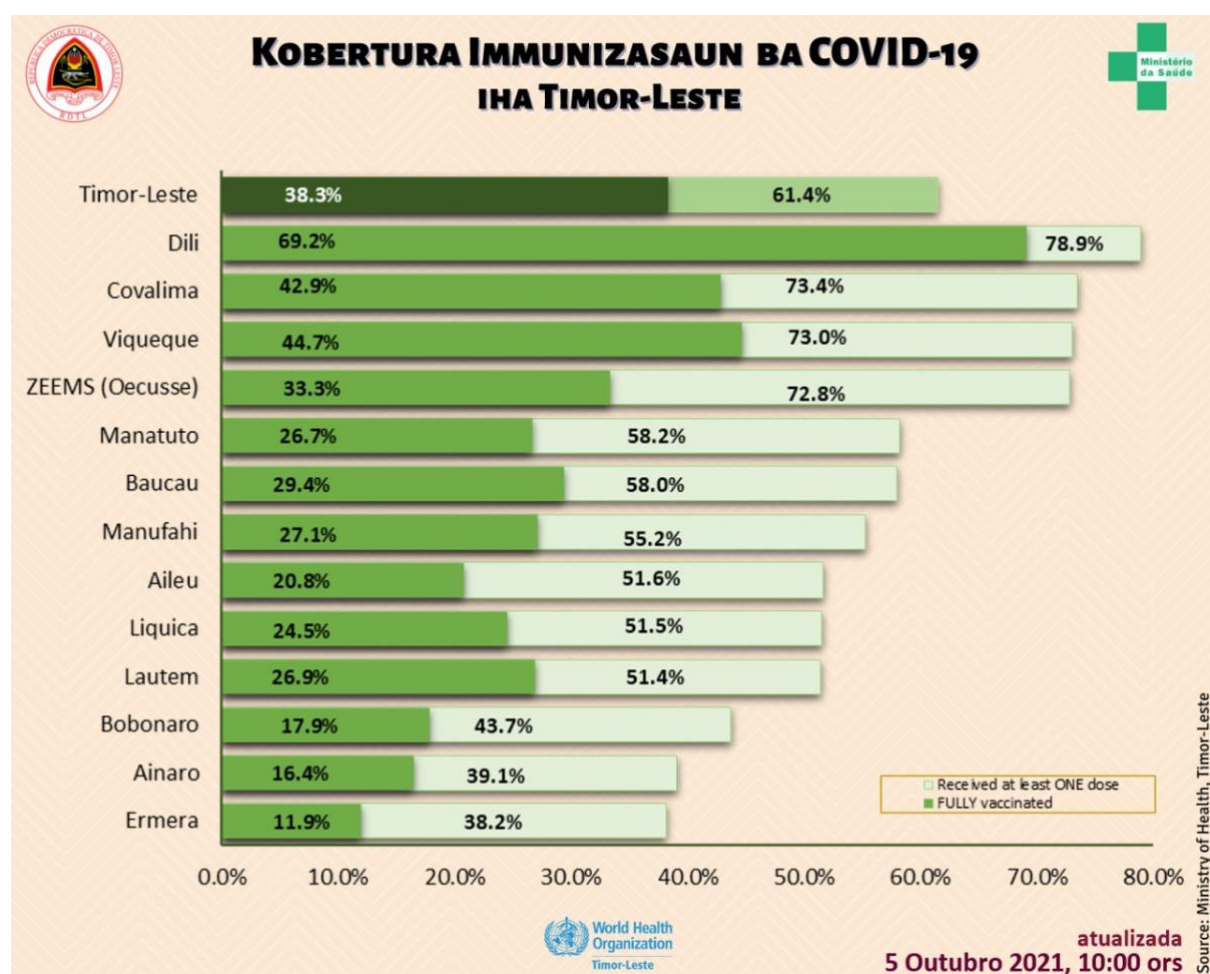
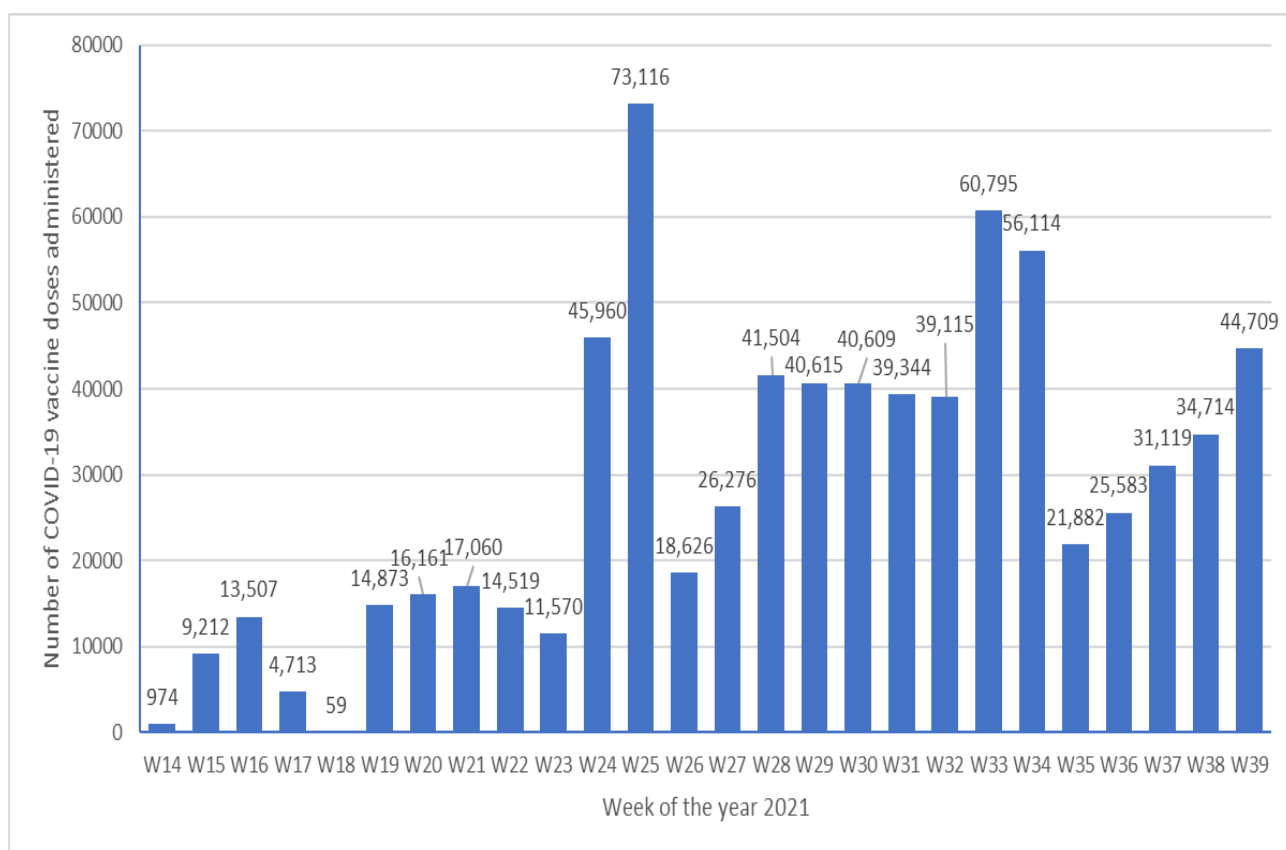


Tabela 2: Númeru ema sira ne'ebé vasinadu no EADI tuir sexu atualizada to'o 10:00 hrs 25/09/2021

Number Vaccinated and AEFI by Sex as of 01/09/2021 15.00hrs.

Municipality	Number Vaccinated						AEFI		
	First Dose			Second Dose			Male	Female	Total
	Male	Female	Total	Male	Female	Total			
Dili	94,940	73,728	168,668	82,941	64,927	147,868	14	19	33
Aileu	8,880	7,235	16,115	3,966	2,517	6,483	1	1	2
Ainaro	7,698	6,033	13,731	3,417	2,355	5,772	0	0	0
Baucau	22,818	19,692	42,510	12,299	9,254	21,553	0	0	0
Bobonaro	13,807	10,980	24,787	6,007	4,136	10,143	4	6	10
Covalima	15,387	14,148	29,535	9,455	7,789	17,244	7	6	13
Ermera	16,547	12,165	28,712	5,692	3,276	8,968	0	0	0
Lautem	9,788	8,937	18,725	5,193	4,616	9,809	2	0	2
Liquica	12,329	10,956	23,285	6,162	4,893	11,055	0	1	1
Manatuto	9,137	7,389	16,526	4,413	3,163	7,576	2	0	2
Manufahi	10,205	8,207	18,412	5,533	3,505	9,038	0	0	0
Viqueque	16,357	15,731	32,088	10,375	9,263	19,638	2	0	2
ZEEMS (Oecusse)	15,590	14,960	30,550	7,397	6,580	13,977	0	0	0
Total (without Dili)	158,543	136,433	294,976	79,909	61,347	141,256	18	14	32
Total (Timor-Leste)	253,483	210,161	463,644	162,850	126,274	289,124	32	33	65

**Figura 2: Progresu semanál imunizasaun COVID-19 iha Timor-Leste atualizada to'o 10:00 hrs 03/10/2021**





**Tabela 3: Númeru ema individuu entre populasaun elijivel sira (tinan 18 no liu\*) ne'ebé vasinadu ona iha Timor-Leste ho vasina COVID-19 no kobertura atualizada to'o 10:00hrs 05/10/2021**

Number Vaccinated and Coverage as of 14/09/2021 10.00hrs among Eligible Population (18y and above)*															
Municipality	Eligible Population			Number vaccinated & Coverage											
	High Risk Groups (20% Pop.)	18-59y no comorbidity (80% Pop.)	Total	First Dose						Second Dose					
				High Risk Groups (20% Pop.)	Coverage	18-59y no comorbidity (80% Pop.)	Coverage	Total	Coverage	High Risk Groups (20% Pop.)	Coverage	18-59y no comorbidity (80% Pop.)	Coverage	Total	Coverage
Dili	29,980	183,822	213,802	51,939	173.2%	116,729	63.5%	168,668	78.9%	32,497	108.4%	115,371	62.8%	147,868	69.2%
Aileu	6,292	24,943	31,235	7,523	119.6%	8,592	34.4%	16,115	51.6%	3,267	51.9%	3,216	12.9%	6483	20.8%
Ainaro	7,410	27,726	35,136	3,539	47.8%	10,192	36.8%	13,731	39.1%	1,987	26.8%	3,785	13.7%	5772	16.4%
Baucau	18,141	55,175	73,316	12,455	68.7%	30,055	54.5%	42,510	58.0%	6,935	38.2%	14,618	26.5%	21553	29.4%
Bobonaro	13,268	43,476	56,744	8,115	61.2%	16,672	38.3%	24,787	43.7%	4,081	30.8%	6,062	13.9%	10143	17.9%
Covalima	8,725	31,503	40,228	8,386	96.1%	21,149	67.1%	29,535	73.4%	5,177	59.3%	12,067	38.3%	17244	42.9%
Ermera	14,350	60,793	75,143	6,948	48.4%	21,764	35.8%	28,712	38.2%	2,354	16.4%	6,614	10.9%	8968	11.9%
Lautem	8,455	27,963	36,418	5,656	66.9%	13,069	46.7%	18,725	51.4%	3,476	41.1%	6,333	22.6%	9809	26.9%
Liquica	9,588	35,597	45,185	5,731	59.8%	17,554	49.3%	23,285	51.5%	2,857	29.8%	8,198	23.0%	11055	24.5%
Manatuto	6,701	21,718	28,419	4,660	69.5%	11,866	54.6%	16,526	58.2%	2,425	36.2%	5,151	23.7%	7576	26.7%
Manufahi	7,595	25,766	33,361	6,796	89.5%	11,616	45.1%	18,412	55.2%	4,370	57.5%	4,668	18.1%	9038	27.1%
Viqueque	11,034	32,534	43,568	9,855	89.3%	22,233	68.3%	32,088	73.6%	6,546	59.3%	13,092	40.2%	19638	45.1%
ZEEMS (Oecusse)	9,408	32,905	42,313	10,741	114.2%	19,809	60.2%	30,550	72.2%	5,079	54.0%	8,898	27.0%	13,977	33.0%
<b>Total (without Dili)</b>	<b>120,967</b>	<b>420,098</b>	<b>541,065</b>	<b>90,405</b>	<b>74.7%</b>	<b>204,571</b>	<b>48.7%</b>	<b>294,976</b>	<b>54.5%</b>	<b>48,554</b>	<b>40.1%</b>	<b>92,702</b>	<b>22.1%</b>	<b>141,256</b>	<b>26.1%</b>
<b>Total (Timor-Leste)</b>	<b>150,947</b>	<b>603,920</b>	<b>754,867</b>	<b>142,344</b>	<b>94.3%</b>	<b>321,300</b>	<b>53.20%</b>	<b>463,644</b>	<b>61.4%</b>	<b>81,051</b>	<b>53.7%</b>	<b>208,073</b>	<b>34.5%</b>	<b>289,124</b>	<b>38.3%</b>

\*Based on 2021 population projections. Population with Comorbidity 12.5% among 30-59y based on 2016 DHS data  
 High Risk Groups (20% of the population) - Healthcare staff, other front line staff, aged 60y and above, and 18-59y with comorbidity  
 18-59y with no comorbidity (80% of the population)

## ANALIZE SITUASAUN

- Bazeia ba informasaun ne'ebé disponivel, kazu atuál ba propagasaun moras COVID-19 hahú menus ona. Númeru paciente iha sentru izolamentu ka auto-izolamentu kontinua tuun ba númeru kiik. Kapasidade sistema saúde mós agora komesa livre ona iha nivel nasional ne'ebé maka maioria jere ba kazu moras grave no kritíku.
- Maibé, teste pozitividade kontinua nafatin tuun sae husi 5-10% (ho média 6.9% husi loron hitu ikus), ne'ebé indika transmisaun comunidade ne'ebé maka'as. Taxa insidénsia iha munisípiu balun kontinua aas. Alende ne'e, Governu mós halo mudansa ba rekerimentu kuarentena ba viajante sira ne'ebé tama mai rai laran. Se viajante sira vasina kompletu ona ho sertifikadu teste PCR negativu, sira la presiza ona halo kuarentena. "Serka Sanitária" ba Dili no munisípiu sira seluk mós hakotu ona iha semana kotuk. Nune'e, ema nia movimentu iha rai laran mós komesa aumenta no nune'e mós risku infesaun. Ida ne'e dala ida tan subliña importánsia hodi implementa no reinforsa medida saúde pública no sosiál nian.
- Hasa'e kobertura vasina mak xave ida hodi kontrola pandemia no fila ba situasaun moris normal. Iha lakuna balun ba kobertura vasina nian, liuliu iha munisípiu balun. Asaun ne'ebé mak tenke foti hodi enkoraja ema atu bele hakbesik an mai simu vasina, inklui halo kampaña fahe informasaun no komunikaun ba grupu prioridade no halo advokasia entre líder sira.

## MUDANSA IHA POLÍTICA/MATADALAN NASIONÁL COVID-19

- Governu decide ona atu hakotu serka sanitaria ba munisípiu Dili, hahú iha 23.59 iha loron 29 Setembru 2021. Ema nia movimentu entre Dili no munisípiu sira nune'e mós entre munisípiu sira seluk iha território laiha ona bandu. Maibé, Governu, kontinua apela ba comunidade hodi halo tuir matadalan no regulamentu sira ne'ebé rekomenda husi MS no OMS atu kontinua kombat propagasaun coronavirus (Fonte: [Governu hakotu ona serka sanitaria iha Dili](#)).
- Parlamentu Nasionál autoriza Prezidente Repúblika hodi renova Estadu Emerjénsia ba loron 30 tan husi oras 00:00 30 Setembru 2021 to'o oras 23:59 29 Outubru 2021 (Fonte: [National Parliament authorizes President of the Republic to renew the State of Emergency for another 30 days](#)).
- Pesoál saúde serbisu iha sentru izolamentu sei la presiza tan halo kuarentena depoisde kompleta sira nia turnu.

- **Variante preokupante**

Variante SARS-CoV-2 ne'ebé tama iha definisaun kritéria VOI (haree iha okos), no liuhusi avaliasaun komparativu, hatudu ona iha asosiasaun ho mudansa balun ida ka rua iha grau signifikativu ba saúde pública global:

- Aumenta transmisibilidade ka alterasaun prejudisial iha epidemiolojia COVID-19;
- Ka aumenta virulénsia ka alterasaun apresentasaun klínika moras; ka
- Hamenus efikasiasaun husi medida saúde pública ka diagnóstiku; vasina, disponibilidade terapéutika.

Atualmente iha variante preokupante haat: Alpha (B.1.1.7); Beta B.1.351; Gamma (P.1); Delta (B.1.617.2).

*Variants of Interest Eta* (B.1.525, detekta dahuluk iha nasaun barak), Iota (B.1.526), detekta dahuluk iha EUA), no Kappa (B.1.617.1, detekta dahuluk iha India), variante hirak ne'e re-klasifikadu fali hanesan "*Variants Under Monitoring*" ka variante ne'ebé iha hela monitorizasaun nia laran bazeia ba avaliasaun ikus foin lalais ne'e, no depois halo konsultasaun ho parseiru nasional no rejional sira, nunez mós konsultasaun ho Virus Evolution Working Group iha loron 13 Setembru 2021.

Enkuantu variante tolu ne'e iha mutasaun ho impaktu ne'ebé potensial ka estabesidu, número variante sira ne'ebé detektadu aumenta beibeik iha nivel global, rejional no nasaun nian. Nunez, ida ne'e determina ona katak variante hirak ne'e laiha risku boot ba saúde pública.

(Fonte: [Tracking SARS-CoV-2 variants](#))

## REKURSU NE'EBÉ DISPONIVEL

- [Ba publiku jerál no profesionál saúde sira kona-ba prevensaun, tratamentu, no vasina, nsst.](#)
- [Rekomendasaun OMS ba Desizaun Relasiona ho COVID-19](#)
- Kursu gratuita iha Tetum – [OpenWHO.org](#)

## KONTAKTU MÉDIA NO INFORMASAUN KONA-BA COVID-19

### Kontaktu média no Informasaun kona-ba COVID-19:

- Ministériu Saúde estabelese ona númeru *hotline* – 119 – ba COVID-19 ne'ebé maka ema hotu-hotu bele telephone hodi hetan informasaun relasiona ho COVID-19
- Alende ne'e, [Páijina Facebook MS](#) nian fornese atualizasaun loloos kona-ba desenvolvimentu COVID-19 iha rai laran
- OMS Timor-Leste liuhusi nia [Páijina Facebook](#) no [Twitter](#) mós disemina informasaun kona-ba medida preventiva, pergunta no resposta, *myth-buster* no atualizasaun ikus kona-ba COVID-19 iha mundu tomak no iha rai laran. Ba media no pedidu ba entrevista bele manda ba [singhsho@who.int](mailto:singhsho@who.int) no [hasane@who.int](mailto:hasane@who.int)