

Coronavirus Disease 2019 (COVID-19)

Situation Report – 123

Timor-Leste



World Health
Organization

Timor-Leste

*Data as reported on 26 October 2021

SITUATION IN NUMBERS

TIMOR-LESTE



Cumulative
19,778 (48)



Recovered (new)
19,605 (68)



Active cases
52



Deaths (new)
121 (1)

VACCINATION STATUS



1st dose
Coverage – **539,740**
– **71.5%**



2nd dose
Coverage – **351,138**
– **46.7%**

*As per data released by the [Ministry of Health](#)

GLOBAL



Cases
243,857,028



Deaths
4,953,246

VACCINATION



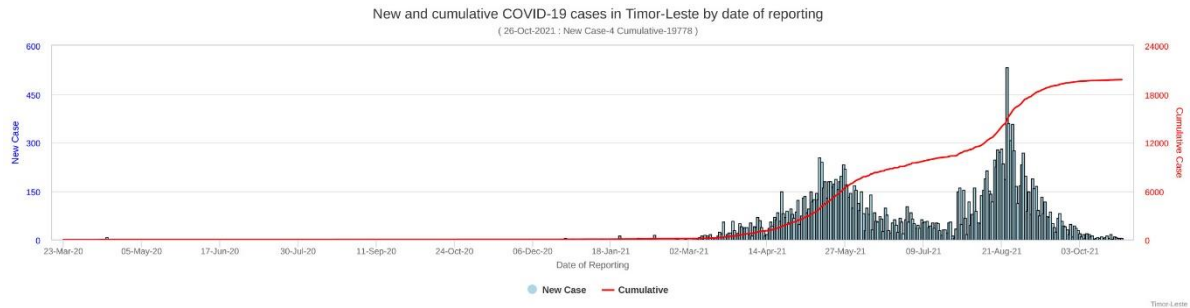
6,697,607,393 doses

HIGHLIGHTS

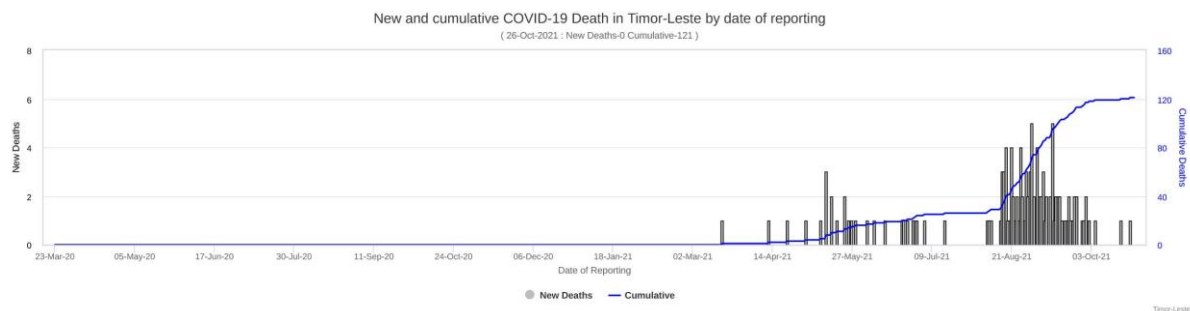
- Since the last edition of the weekly situation report, the Ministry of Health (MoH) reported **48** new cases of COVID-19, **68** recoveries and **1** death. The number of new cases and deaths have been on a declining trend since late August.
- The Ministry of Health and Ministry of Education, along with US Embassy Dili, WHO and UNICEF officially launched the Pfizer COVID-19 vaccine; targeting approximately fifty thousand school children aged 12- to below 18 in Dili.
- Pillar 7 of the COVID-19 response vertical and HNGV, with technical support from WHO and financial assistance from Korea International Cooperation Agency (KOICA), are training 25 doctors, nurses, and midwives on the care of COVID-19 patients in Dili Isolation centres and CHCs. Even though cases have reduced over the past month, refresher training remains an important activity to prepare staff for any new outbreaks. The five days long refresher training focuses on infection prevention and control, clinical management, and respiratory care.

- WHO is currently supporting 44 vehicles for operational support in 12 municipalities and the special region Oecusse for the COVID-19 vaccine campaign advocacy and social mobilization.
- With support from WHO, Pillar 2 of COVID-19 response vertical conducted quarterly evaluation meeting to review the work, what has worked well, challenges faced and the way forward.
- To support the Government's efforts to strengthen COVID-19 preparedness and response in border regions, IOM Timor-Leste, with contribution from WHO and funds from the EU, successfully conducted the last series of COVID-19 preventive measures training to the border police unit, customs officers, and migration services officers in RAEOA.
- With support from WHO and UNICEF, the Ministry of Health and the Ministry of Education continue to conduct COVID-19 vaccine Pfizer advocacy for 12 to below 18 age group parents, and teachers for the upcoming COVID-19 vaccine Pfizer roll out in two municipalities – Dili and Liquica.
- WHO Timor-Leste provided technical assistance to the MoH-National TB Programme led TB vulnerability assessment demonstration in a representative sample of geographical areas. TB Vulnerability Assessment is a systematic mapping of people in the community who are at high risk for developing TB. This is being done using a standardized vulnerability assessment tool through the Mobile Prevent TB Application in the DHIS2 platform for the first time in the country.
- To maintain essential health services, WHO Timor-Leste supported the Ministry of Health conduct a 4-days consultative workshop on System Thinking for strengthening districts health systems. It was to enhance health professionals' ability in problem analysis and mapping, building blocks frameworks, and a more holistic understanding of districts health system challenges. About 50 community health centres focal points from health posts and districts health offices participated in this workshop.
- H.E. dr. Odete Maria Freitas Belo, Minister of Health, National T.B. Programme Manager, and WHO Timor-Leste participated in a high-level virtual meeting for renewed T.B. response in the WHO South-East Asia Region

EPIDEMIOLOGICAL UPDATES



- **New and cumulative COVID-19 cases**
 - In all, 48 new cases were reported in the last seven days (20-26 October), with slight reduction (2%) compared to the previous reporting period.
 - Cumulatively, 19,778 COVID-19 confirmed cases reported since the start of the pandemic in March 2020. However, most of the cases (99%) were reported after March 2021.
- **New and cumulative COVID-19 deaths**



- One death reported during the last seven days (20-26 October), which was from Covalima. Cumulatively, 121 death have been reported since the first COVID-19 related death was reported on 18 March.

- Distribution of cases and deaths by municipalities**

Distribution of newly reported, recovered, and active cases by municipalities, as of 26 October 2021)

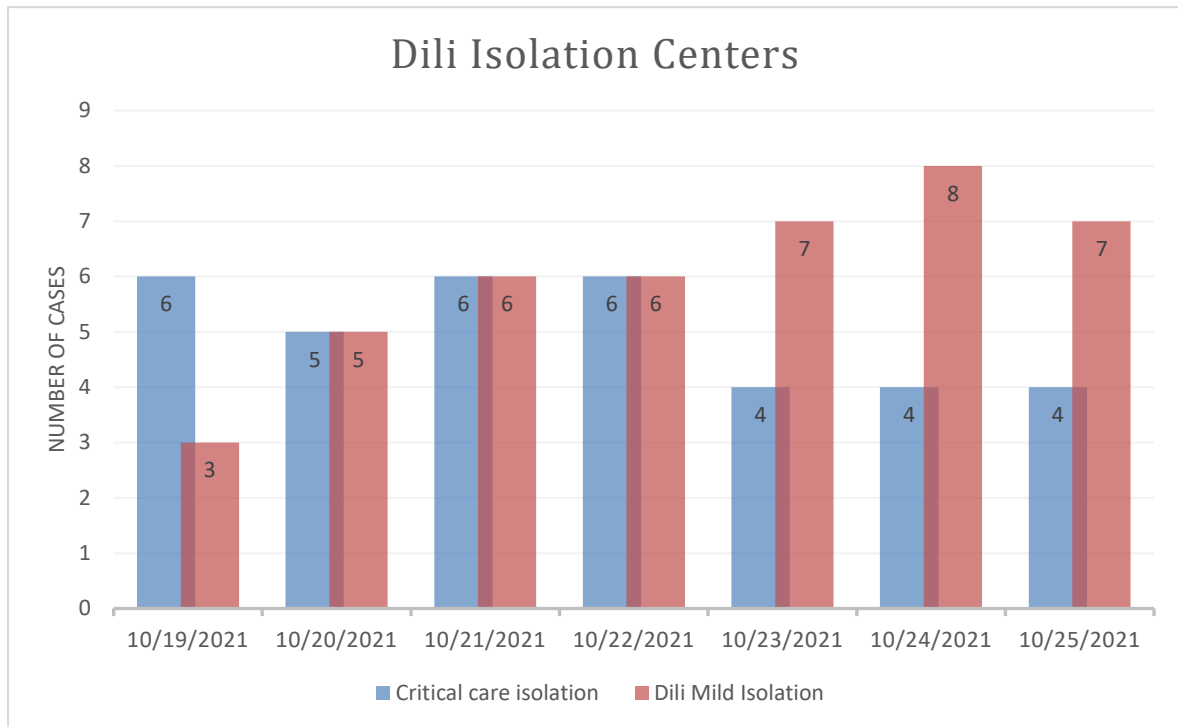
| Municipality | New case (20-26 Oct 2021) | Last 7- day % change (case)* | Cumulative case | New recovered (20-26 Oct 2021) | Cumulative recovered | New death (20-26 Oct 2021) | Cumulative death | Active Cases (26 Oct 2021) |
|--------------|---------------------------------|---------------------------------------|--------------------|---|-------------------------|----------------------------------|---------------------|----------------------------------|
| Aileu | 0 | 0 | 126 | 0 | 125 | 0 | 1 | 0 |
| Ainaro | 0 | 0 | 227 | 0 | 224 | 0 | 3 | 0 |
| Baucau | 0 | -100 | 1536 | 1 | 1527 | 0 | 7 | 2 |
| Bobonaro | 1 | -89 | 601 | 3 | 590 | 0 | 9 | 2 |
| Covalima | 2 | -60 | 785 | 12 | 781 | 1 | 3 | 1 |
| Dili | 41 | 58 | 13703 | 43 | 13579 | 0 | 80 | 44 |
| Ermera | 0 | 0 | 1113 | 0 | 1111 | 0 | 2 | 0 |
| Lautem | 0 | -100 | 183 | 0 | 177 | 0 | 5 | 1 |
| Liquica | 0 | 0 | 125 | 0 | 124 | 0 | 1 | 0 |
| Manatuto | 0 | 0 | 203 | 0 | 201 | 0 | 2 | 0 |
| Manufahi | 0 | 0 | 265 | 0 | 265 | 0 | 0 | 0 |
| RAEOA | 1 | -67 | 393 | 5 | 389 | 0 | 3 | 1 |
| Viqueque | 3 | -25 | 518 | 4 | 512 | 0 | 5 | 1 |
| TOTAL | 48 | -2 | 19778 | 68 | 19605 | 1 | 121 | 52 |

*Change in new COVID-19 cases as compared with the previous 7 days

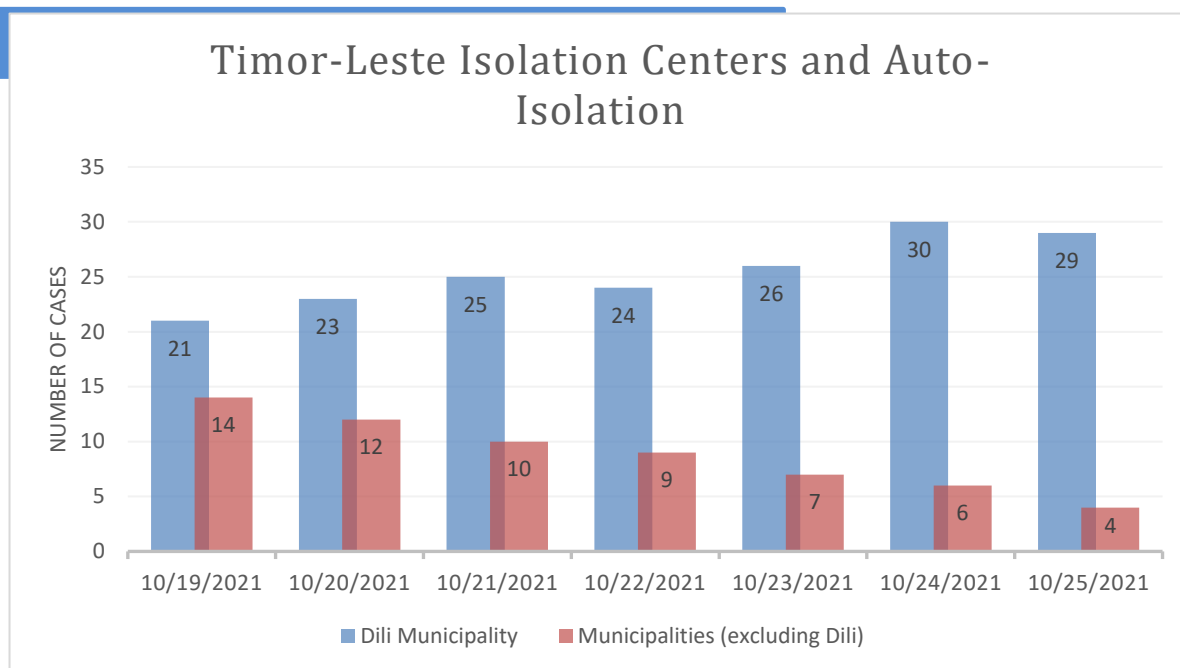
- The number of new cases reported during the current reporting period (20-26 October) are 48, a 2% reduction as compared to the previous reporting period. However, the cases reported from Dili Municipality have increased by 58%, while numbers of new cases in other municipalities remain zero or significantly lower.
 - Currently there are only 52 active cases across the country.
- Number of test and test positivity rates**
 - During the current reporting period from 20-26 October, 1,842 tests were conducted, as compared to 1,885 tests in the last 7 days.
 - The test positivity rate of this reporting period averaged to 2.6%, almost the same as the previous reporting period, which is below 5% and classified as limited community transmission.

CASE MANAGEMENT

- The isolation centre admissions in Dili continued to decrease steadily throughout October 2021. The numbers admitted to critical care isolation centres (Lahane and Vera Cruz) have also decreased and are between 4-10 patients. Since the start of the lockdown on 27 August 2021, there has been an overall decrease of 96% in admissions in Dili isolation centres.



- This chart shows the total number of people admitted to isolation centres and auto-isolation (at home) in 12 municipalities compared to Dili. Throughout Timor-Leste, patients admitted to isolation centres have steadily decreased.



At the time of writing this report, in total, 890,878 COVID-19 vaccine doses comprising 539,740, first doses (coverage 71.5%) and 351,138 second doses (coverage 46.5%) were administered in Timor-Leste. The breakdown of the number of doses administered and coverage by vaccine type and vaccine dose is given in Table 1.

Table 1: Number of COVID-19 vaccine doses administered and coverage in Dili and Timor-Leste by vaccine brand and doses as of 10:00hrs 26/10/2021

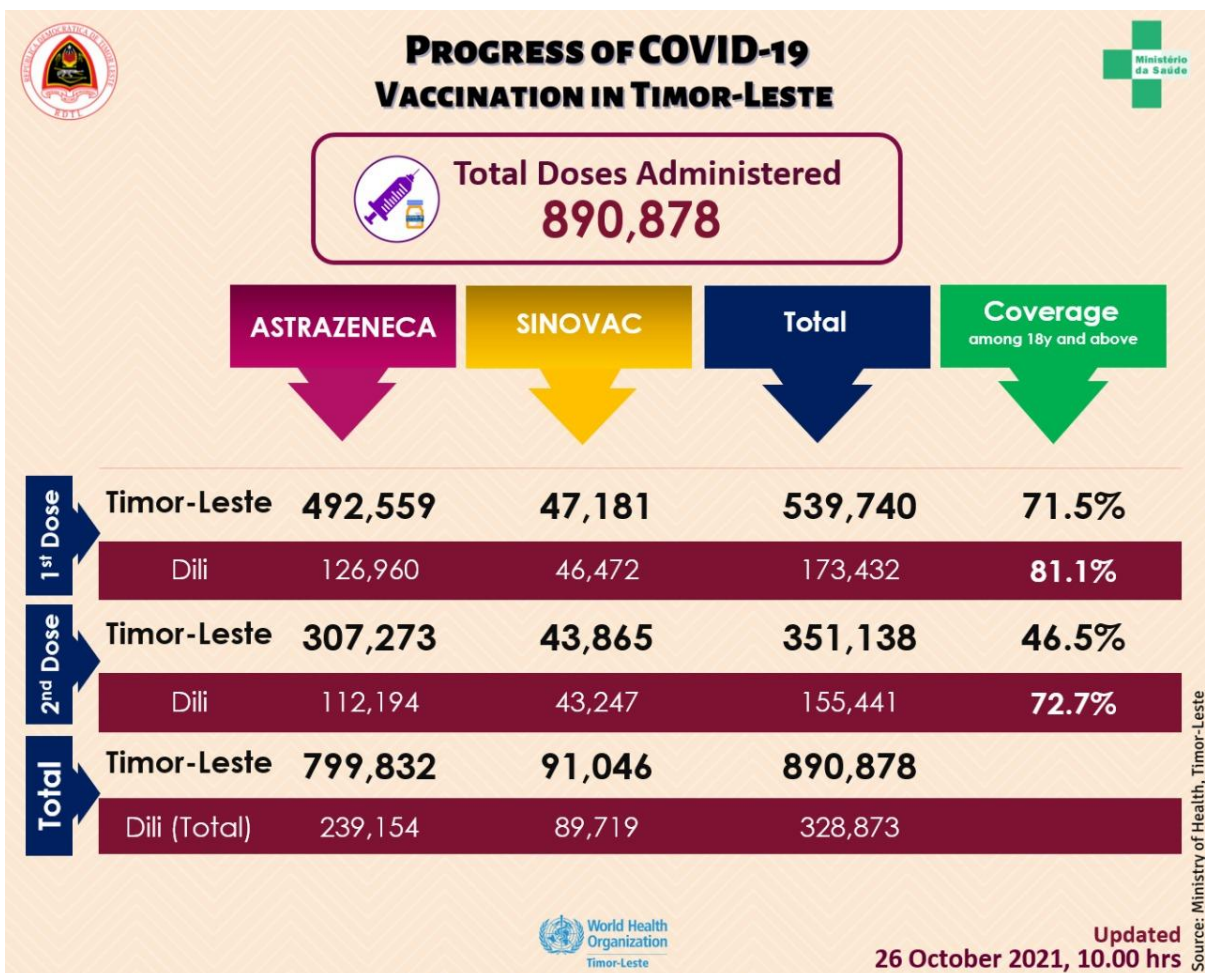


Figure 1: Coverage of COVID-19 vaccination by municipality in Timor-Leste as of 10:00hrs 26/10/20



COVID-19 VACCINE COVERAGE IN TIMOR-LESTE

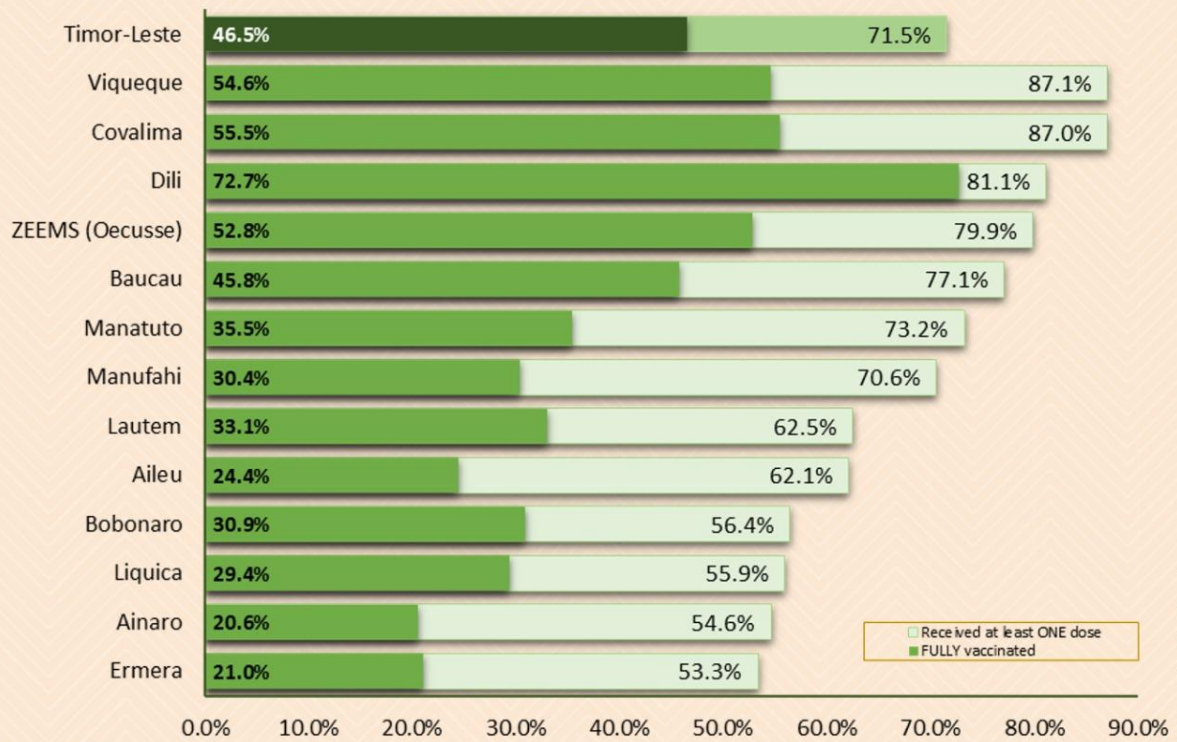


Table 2: Number of individuals vaccinated and AEFI by sex as of 10:00 hrs 26/10/2021

| Municipality | Number Vaccinated | | | | | | AEFI | | |
|-----------------------------|-------------------|----------------|----------------|----------------|----------------|----------------|-----------|-----------|-----------|
| | First Dose | | | Second Dose | | | Male | Female | Total |
| | Male | Female | Total | Male | Female | Total | | | |
| Dili | 97,048 | 76,384 | 173,432 | 86,812 | 68,629 | 155,441 | 13 | 21 | 34 |
| Aileu | 10,310 | 9,080 | 19,390 | 4,566 | 3,052 | 7,618 | 1 | 1 | 2 |
| Ainaro | 10,181 | 8,994 | 19,175 | 4,210 | 3,016 | 7,226 | 0 | 0 | 0 |
| Baucau | 28,608 | 27,902 | 56,510 | 18,455 | 15,092 | 33,547 | 0 | 0 | 0 |
| Bobonaro | 16,953 | 15,063 | 32,016 | 9,922 | 7,609 | 17,531 | 4 | 6 | 10 |
| Covalima | 17,845 | 17,163 | 35,008 | 12,080 | 10,246 | 22,326 | 7 | 6 | 13 |
| Ermera | 21,808 | 18,271 | 40,079 | 9,631 | 6,142 | 15,773 | 0 | 0 | 0 |
| Lautem | 11,360 | 11,399 | 22,759 | 6,305 | 5,733 | 12,038 | 2 | 0 | 2 |
| Liquica | 13,217 | 12,043 | 25,260 | 7,377 | 5,909 | 13,286 | 0 | 1 | 1 |
| Manatuto | 10,998 | 9,816 | 20,814 | 5,803 | 4,276 | 10,079 | 2 | 0 | 2 |
| Manufahi | 12,450 | 11,088 | 23,538 | 6,163 | 3,986 | 10,149 | 1 | 2 | 3 |
| Viqueque | 18,903 | 19,354 | 38,257 | 12,473 | 11,524 | 23,997 | 4 | 0 | 4 |
| ZEEMS (Oecusse) | 16,649 | 16,853 | 33,502 | 11,424 | 10,703 | 22,127 | 0 | 0 | 0 |
| Total (without Dili) | 189,282 | 177,026 | 366,308 | 108,409 | 87,288 | 195,697 | 21 | 16 | 37 |
| Total (Timor-Leste) | 286,330 | 253,410 | 539,740 | 195,221 | 155,917 | 351,138 | 34 | 37 | 71 |

Figure 2: Weekly progress of vaccination in Timor-Leste during as of 10:00 hrs 24/10/2021

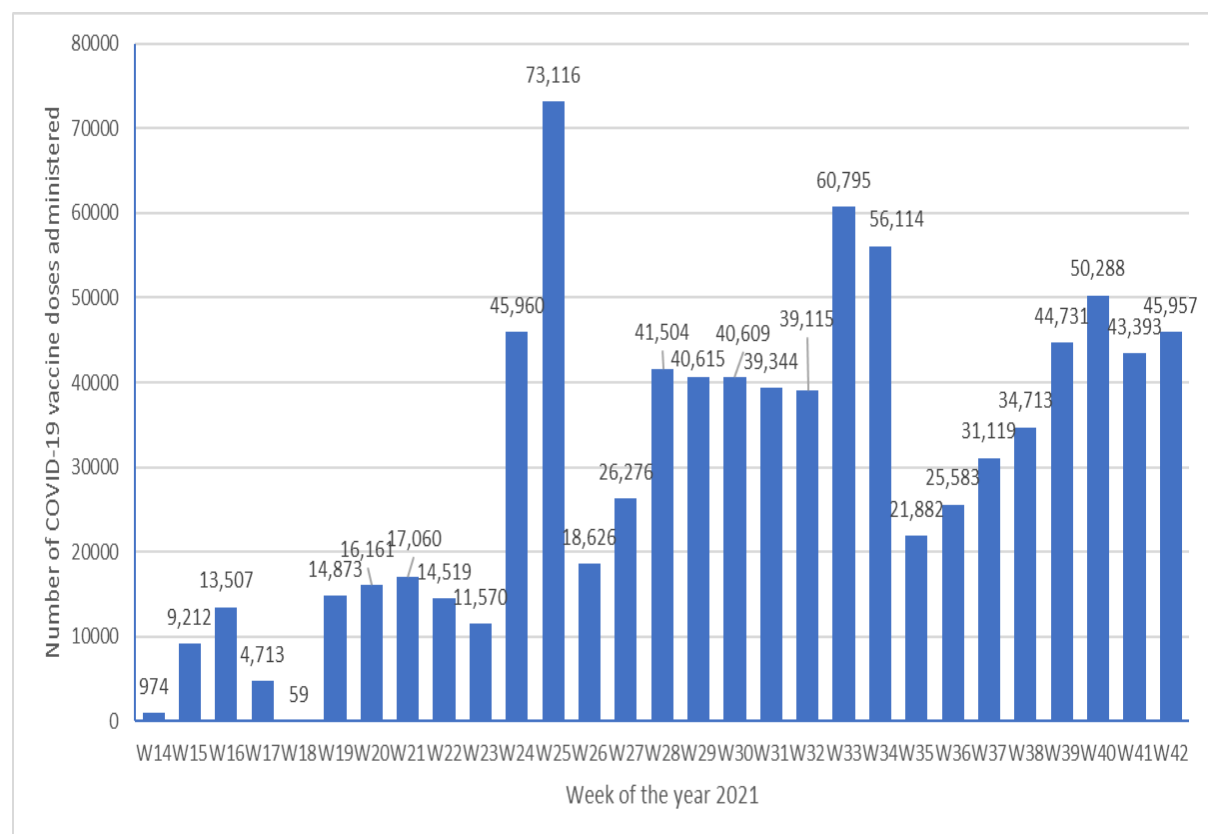


Table 3. Number of individuals among eligible population (18 years and above*) vaccinated in Timor-Leste with COVID-19 vaccine and coverage as of 10:00hrs 26/10/2021

| Municipality | Eligible Population | | | Number vaccinated & Coverage | | | | | | | | | | | |
|-----------------------------|-----------------------------|----------------------------------|----------------|------------------------------|---------------|----------------------------------|---------------|----------------|--------------|-----------------------------|--------------|----------------------------------|--------------|----------------|--------------|
| | High Risk Groups (20% Pop.) | 18-59y no comorbidity (80% Pop.) | Total | First Dose | | | | | | Second Dose | | | | | |
| | | | | High Risk Groups (20% Pop.) | Coverage | 18-59y no comorbidity (80% Pop.) | Coverage | Total | Coverage | High Risk Groups (20% Pop.) | Coverage | 18-59y no comorbidity (80% Pop.) | Coverage | Total | Coverage |
| Dili | 29,980 | 183,822 | 213,802 | 52,569 | 175.3% | 120,863 | 65.8% | 173,432 | 81.1% | 33,007 | 110.1% | 122,434 | 66.6% | 155,441 | 72.7% |
| | | | | | | | | | | | | | | | |
| Aileu | 6,292 | 24,943 | 31,235 | 9,537 | 151.6% | 9,853 | 39.5% | 19,390 | 62.1% | 3,795 | 60.3% | 3,823 | 15.3% | 7618 | 24.4% |
| Ainaro | 7,410 | 27,726 | 35,136 | 4,830 | 65.2% | 14,345 | 51.7% | 19,175 | 54.6% | 2,207 | 29.8% | 5,019 | 18.1% | 7226 | 20.6% |
| Baucau | 18,141 | 55,175 | 73,316 | 16,280 | 89.7% | 40,230 | 72.9% | 56,510 | 77.1% | 9,137 | 50.4% | 24,410 | 44.2% | 33547 | 45.8% |
| Bobonaro | 13,268 | 43,476 | 56,744 | 9,224 | 69.5% | 22,792 | 52.4% | 32,016 | 56.4% | 5,266 | 39.7% | 12,265 | 28.2% | 17531 | 30.9% |
| Covalima | 8,725 | 31,503 | 40,228 | 9,272 | 106.3% | 25,736 | 81.7% | 35,008 | 87.0% | 5,885 | 67.4% | 16,441 | 52.2% | 22326 | 55.5% |
| Ermera | 14,350 | 60,793 | 75,143 | 9,141 | 63.7% | 30,938 | 50.9% | 40,079 | 53.3% | 3,115 | 21.7% | 12,658 | 20.8% | 15773 | 21.0% |
| Lautem | 8,455 | 27,963 | 36,418 | 6,912 | 81.8% | 15,847 | 56.7% | 22,759 | 62.5% | 4,025 | 47.6% | 8,013 | 28.7% | 12038 | 33.1% |
| Liquica | 9,588 | 35,597 | 45,185 | 6,344 | 66.2% | 18,916 | 53.1% | 25,260 | 55.9% | 3,181 | 33.2% | 10,105 | 28.4% | 13286 | 29.4% |
| Manatuto | 6,701 | 21,718 | 28,419 | 5,993 | 89.4% | 14,821 | 68.2% | 20,814 | 73.2% | 2,814 | 42.0% | 7,265 | 33.5% | 10079 | 35.5% |
| Manufahi | 7,595 | 25,766 | 33,361 | 8,338 | 109.8% | 15,200 | 59.0% | 23,538 | 70.6% | 4,810 | 63.3% | 5,339 | 20.7% | 10149 | 30.4% |
| Viqueque | 11,034 | 32,534 | 43,568 | 11,670 | 105.8% | 26,587 | 81.7% | 38,257 | 87.8% | 7,509 | 68.1% | 16,488 | 50.7% | 23997 | 55.1% |
| ZEEMS (Oecusse) | 9,408 | 32,905 | 42,313 | 11,220 | 119.3% | 22,282 | 67.7% | 33,502 | 79.2% | 6,642 | 70.6% | 15,485 | 47.1% | 22,127 | 52.3% |
| Total (without Dili) | 120,967 | 420,098 | 541,065 | 108,761 | 89.9% | 257,547 | 61.3% | 366,308 | 67.7% | 58,386 | 48.3% | 137,311 | 32.7% | 195,697 | 36.2% |
| Total (Timor-Leste) | 150,947 | 603,920 | 754,867 | 161,330 | 106.9% | 378,410 | 62.66% | 539,740 | 71.5% | 91,393 | 60.5% | 259,745 | 43.0% | 351,138 | 46.5% |

Table 4: COVID-19 Coverage Among TOTAL POPULATION by District as of 10:00 hrs 26/10/2021

| Municipality | Total Population | Number Vaccinated & Coverage | | | |
|-----------------------------|------------------|------------------------------|--------------|-------------------|--------------|
| | | First Dose | | Second Dose | |
| | | Number Vaccinated | Coverage | Number Vaccinated | Coverage |
| Dili | 352,553 | 173,432 | 49.2% | 155,441 | 44.1% |
| | | | | | |
| Aileu | 56,242 | 19,390 | 34.5% | 7,618 | 13.5% |
| Ainaro | 65,509 | 19,175 | 29.3% | 7,226 | 11.0% |
| Baucau | 126,996 | 56,510 | 44.5% | 33,547 | 26.4% |
| Bobonaro | 99,932 | 32,016 | 32.0% | 17,531 | 17.5% |
| Covalima | 70,194 | 35,008 | 49.9% | 22,326 | 31.8% |
| Ermera | 139,692 | 40,079 | 28.7% | 15,773 | 11.3% |
| Lautem | 66,938 | 22,759 | 34.0% | 12,038 | 18.0% |
| Liquica | 81,293 | 25,260 | 31.1% | 13,286 | 16.3% |
| Manatuto | 49,417 | 20,814 | 42.1% | 10,079 | 20.4% |
| Manufahi | 57,831 | 23,538 | 40.7% | 10,149 | 17.5% |
| Viqueque | 72,042 | 38,257 | 53.1% | 23,997 | 33.3% |
| ZEEMS (Oecusse) | 79,141 | 33,502 | 42.3% | 22,127 | 28.0% |
| Total (without Dili) | 965,227 | 366,308 | 38.0% | 195,697 | 20.3% |
| Total (Timor-Leste) | 1,317,780 | 539,740 | 41.0% | 351,138 | 26.6% |

Table 5: Number of individuals TO BE VACCINATED by District as of 10:00 hrs 26/10/2021

| Municipality | Total Population | Number TO BE VACCINATED and Percentage | | | |
|-----------------------------|------------------|--|--------------|-------------------------|--------------|
| | | First Dose | | Second Dose | |
| | | Number to be Vaccinated | Percentage | Number to be Vaccinated | Percentage |
| Dili | 352,553 | 179,121 | 50.8% | 197,112 | 55.9% |
| | | | | | |
| Aileu | 56,242 | 36,852 | 65.5% | 48,624 | 86.5% |
| Ainaro | 65,509 | 46,334 | 70.7% | 58,283 | 89.0% |
| Baucau | 126,996 | 70,486 | 55.5% | 93,449 | 73.6% |
| Bobonaro | 99,932 | 67,916 | 68.0% | 82,401 | 82.5% |
| Covalima | 70,194 | 35,186 | 50.1% | 47,868 | 68.2% |
| Ermera | 139,692 | 99,613 | 71.3% | 123,919 | 88.7% |
| Lautem | 66,938 | 44,179 | 66.0% | 54,900 | 82.0% |
| Liquica | 81,293 | 56,033 | 68.9% | 68,007 | 83.7% |
| Manatuto | 49,417 | 28,603 | 57.9% | 39,338 | 79.6% |
| Manufahi | 57,831 | 34,293 | 59.3% | 47,682 | 82.5% |
| Viqueque | 72,042 | 33,785 | 46.9% | 48,045 | 66.7% |
| ZEEMS (Oecusse) | 79,141 | 45,639 | 57.7% | 57,014 | 72.0% |
| Total (without Dili) | 965,227 | 598,919 | 62.0% | 769,530 | 79.7% |
| Total (Timor-Leste) | 1,317,780 | 778,040 | 59.0% | 966,642 | 73.4% |

SITUATION ANALYSIS

- There is a slight reduction of the total number of new cases reported during the last seven days nationwide. However, the number of new cases in Dili in the current reporting period has increased by 58% as compared to the last reporting period. This is a reminder that the current level of transmission is volatile and could spread anytime in any parts of the country. It also tells us that the pandemic is not over yet in the country where the transmission could still increase while the full vaccination coverage is 72% in the capital city.
- Test positivity remains unchanged around 2.6% comparable to the previous reporting period. It also indicates that the number of tests is low. It is recommended to increase the number of tests.
- Greater efforts should be made to accelerate the vaccination coverage. The launch of the Pfizer vaccines for individuals aged 12-to under 18 on 27 October is a welcome development. The vaccine advocacy and sensitization are underway across the country. It is yielding results too and it is recommended to continue without any disruptions.

CHANGES IN NATIONAL COVID-19 POLICIES/GUIDELINES

- The Government has decided to lift the sanitary fence in the capital Dili, starting at 23:59 on 29 September 2021. The movement of the citizens between Dili and municipalities as well as between the municipalities across the territory is no longer be prohibited. However, the Government called on communities to follow the COVID-19 guideline and safety regulations recommended by the MoH and WHO to keep fighting the spread of coronavirus. (source: [The government decided to lift the sanitary fence in Dili](#)).
- National Parliament authorizes President of the Republic to renew the State of Emergency for another 30 days between 00:00 hours 30 October 2021 and 23:59 hours 28 November 2021.
- Health workers working at isolation centres are no longer required to quarantine after completing their shift. A swab for the COVID-19 test will be collected on the last day, and if tested negative, the health workers will return to their families.

CURRENT CONCERN

Pfizer vaccine for adolescents

A Phase 3 trial in children aged 12-15 years showed high efficacy and good safety in this age group, leading to an extension of the previous age indication from 16 years onwards down to age 12 onwards.

Evidence suggests that adolescents, particularly older adolescents, are as likely to transmit SARS-CoV-2 as adults do. WHO recommends that countries should consider using the vaccine in children aged 12 to 15 only when high vaccine coverage with 2 doses has been achieved in the high priority groups as identified in the WHO Prioritization Roadmap.

Children 12-15 years of age with comorbidities that put them at significantly higher risk of serious COVID-19 disease, alongside other high-risk groups, may be offered vaccination.

What is the recommended dosage?

A protective effect starts to develop 12 days after the first dose, but full protection requires two doses which WHO recommends be administered with a 21 to 28-day interval. Additional research is needed to understand longer-term potential protection after a single dose. It is currently recommended that the same product should be used for both doses.

Is it safe?

WHO granted the Pfizer BioNTech vaccine EUL on 31 December 2020. WHO has thoroughly assessed the quality, safety, and efficacy of the vaccine and has recommended its use for persons above the age of 16.

The Global Advisory Committee on Vaccine Safety, a group of experts that provides independent and authoritative guidance to WHO on the topic of safe vaccine use, receives and assesses reports of suspected safety events of potentially international impact.

Source: [The Pfizer BioNTech \(BNT162b2\) COVID-19 vaccine: What you need to know](#)

AVAILABLE RESOURCES

- [For public and professionals on prevention, treatment, and vaccination etc.](#)
- [WHO Recommendations for COVID-19 Related Decisions](#)
- WHO Free Courses in Tetum – [OpenWHO.org](#)

COVID-19 INFORMATION AND MEDIA QUERIES

- The MoH has established a hotline number – 119 – for COVID-19 on which people can call to get any COVID-19 related information.
- Additionally, [MoH Facebook page](#) provides timely updates on COVID-19 developments in the country.
- WHO Timor-Leste through its [Facebook page](#) and [Twitter handle](#) also disseminates information on preventive measures, questions and answers, myth-busters and latest updates on COVID-19 globally and nationally.
- For media queries and interviews requests can be sent to singhsho@who.int and hasane@who.int