

Coronavirus Disease 2019 (COVID-19)

Situation Report – 125

Timor-Leste



World Health
Organization

Timor-Leste

*Data as reported on 09 November 2021

SITUATION IN NUMBERS

TIMOR-LESTE



Cumulative
19,804 (14)



Recovered (new)
19,672 (36)



Active cases
10



Deaths (new)
122 (0)

VACCINATION STATUS



1st dose
Coverage – **75.9%**



2nd dose
Coverage – **50.3%**

*As per data released by the [Ministry of Health](#)

GLOBAL



Cases
250,154,972



Deaths
5,054,267

VACCINATION



7,084,922,999 doses

HIGHLIGHTS

- Since the last edition of the weekly situation report, the Ministry of Health (MoH) reported **14** new cases of COVID-19, **36** recoveries and **0** death. The number of new cases and deaths have been low and stable.
- To increase vaccine uptake in 12 to under 18 age group, the MoH, and the Ministry of Education with support from WHO and UNICEF continue to conduct COVID-19 vaccine Pfizer advocacy for 12 to below 18 age group parents, and teachers for the COVID-19 vaccine Pfizer roll out in Dili.
- Supported by WHO with funding support from EU, teams consisting of members from Pillar 3 and Pillar 7 of the MoH are conducting nationwide mortality review together with local authorities. The purpose is to understand the possible cause of deaths over the past several months by verbal autopsy and analyse possible excess mortality across the country. The work is expected to be completed by December.
- The transmission assessment survey (TAS), the integrated NTD prevalence survey, starts in Oecusse from Nov 9, 2021. Oecusse is the last municipality for the nationwide school-based

survey to determine prevalence of four NTDs, lymphatic filariasis (LF), soil-transmitted helminthiasis (STH), yaws and scabies. Supported by KOICA, the TAS in Timor-Leste has also been a platform to assess the nutritional status of the participating children and impart health education to them. Starting from Covalima, Bobonaro and Ainaro in September 2020, more than 9,000 students of 1st and 2nd grade in 204 schools from 12 municipalities other than Oecusse were laboratory tested for LF and inspected for skin infection. 7,500 stool samples were collected and examined for STH at the National Health Laboratory (NHL). In Oecusse, the TAS will target 2,000 students from 30 schools and the stool examination will be conducted by a joint team of NHL, the Oecusse Referral Hospital and WHO. The survey results will guide the National Program to make programmatic decisions on the further steps for NTD elimination and control in TLS.

- To maintain essential health services, the MoH with EPI surveillance team, and NHL with WHO's support are conducting a week-long supportive supervision in Maubisse and Covalima Referral Hospitals and other CHCs with to strengthen vaccine-preventable diseases surveillance amid the pandemic. In addition to supportive supervision, the team is also conducting on the job training for health workers at the health facilities.
- After Dili, Liquica, Aileu, Ainaro, Manufahi and Viqueque – Lautem is the next municipality to conduct TB Vulnerability Assessment demonstration in the field, with the technical support from WHO Timor-Leste.
- To maintain essential health services, the MoH with technical and financial assistance from WHO conducted a three-day sensitization session on new-born birth defects (NBBD) database system for the Department of Maternal & Child Health at five referral hospitals. The collected data will subsequently be fed into the SEAR NBBD electronic database which will enable identification and documentation of birth defects, which in turn will help in devising evidence-based early preventive measures during antenatal care visits.
- The MoH, with technical assistance and financial support from WHO conducted an orientation on implementation of the maternal and perinatal death surveillance review (MPDSR) system and verbal autopsy at CHC level for Bobonaro, Lautem and Manatuto to reinforce the implementation of MPDSR within referral hospitals.
- WHO continues to support the MoH through one of its implementing partners, SABEH, to carry out outreach medical consultations and domiciliary visits. Since the beginning of the activity, 7313 individuals have benefitted from this activity. In addition, the programme has also been contributing to the COVID-19 vaccination rollout, socialisation of COVID-19 prevention measures oral health promotion in the communities in three municipalities – Bobonaro, Covalima and Dili.

EPIDEMIOLOGICAL UPDATES

• Distribution of cases and deaths by municipalities

Distribution of newly reported, recovered, active cases and deaths by municipalities, as of 9 November 2021

Municipality	New case (3 - 9 Nov. 2021)	Last 7-day % change (case)*	Cumulative case	New recovered (3 - 9 Nov. 2021)	Cumulative recovered	New death (3 - 9 Nov. 2021)	Cumulative death	Active Cases (9 Nov. 2021)
Aileu	0	0	126	0	125	0	1	0
Ainaro	0	0	227	0	224	0	3	0
Baucau	0	-100	1538	4	1531	0	7	0
Bobonaro	0	-100	602	2	592	0	9	1
Covalima	1	0	787	0	783	0	3	1
Dili	13	86	13723	29	13634	0	81	8
Ermera	0	0	1113	0	1111	0	2	0
Lautem	0	0	183	0	178	0	5	0
Liquica	0	0	125	0	124	0	1	0
Manatuto	0	0	203	0	201	0	2	0
Manufahi	0	0	265	0	265	0	0	0
RAEOA	0	0	393	0	390	0	3	0
Viqueque	0	-100	519	1	514	0	5	0
TOTAL	14	17	19804	36	19672	0	122	10

*Change in new COVID-19 cases as compared with the previous 7 days

- 14 new cases reported during the current reporting period (3 – 9 Nov 2021). Of these, 13 are from Dili, and one from Covalima. The number of new cases has slightly increased but remain stable compared to the previous reporting period.

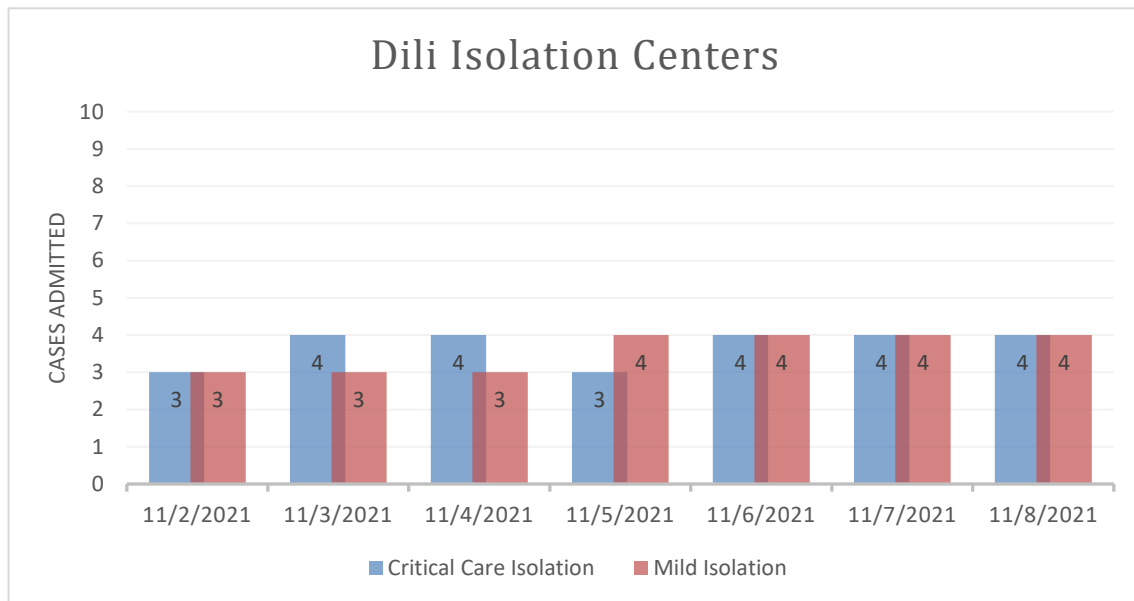
- No death from COVID-19 in Timor-Leste during this reporting period.

- The number of active cases is 10, which is the lowest since the start of the current wave of transmission.

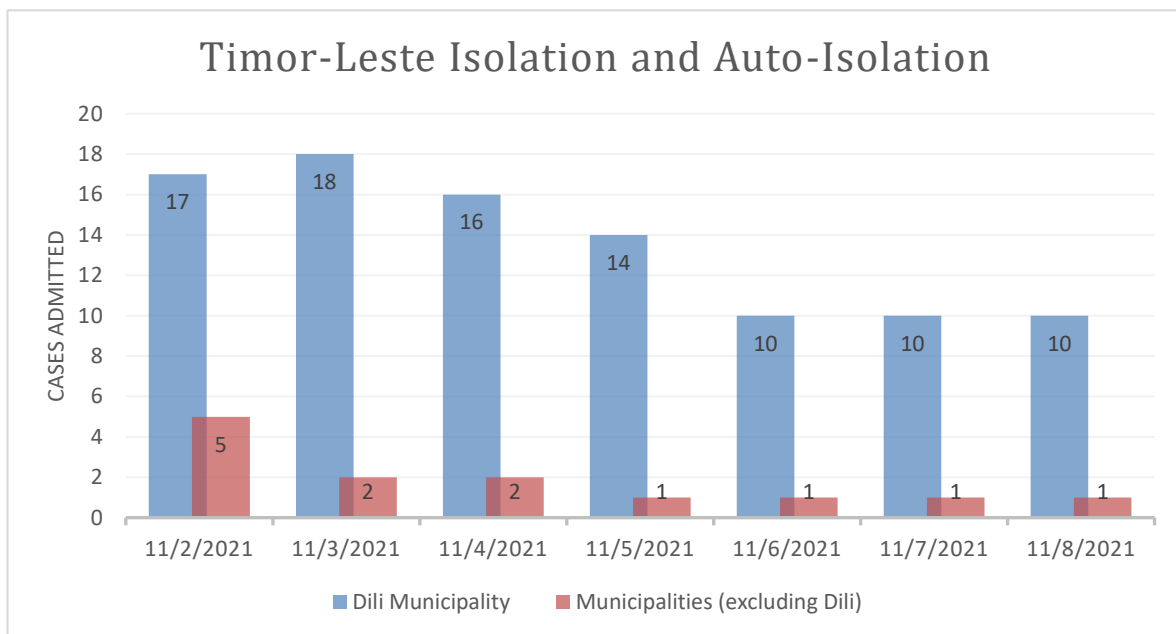
• Number of test and test positivity rates

- During the current reporting period, from 3 to 9 November, 1,281 tests were conducted compared to 1,505 tests in the previous seven days.
- The test positivity rates of this reporting period averaged to 1.1% – a 37% increase compared to the previous reporting period.

CASE MANAGEMENT



The isolation centre admissions in Dili continued to decrease steadily throughout October 2021. The numbers admitted to critical care isolation centres (Lahane and Vera Cruz) have been in single digits, between 3-4. Since late August 2021, there has been an overall decrease of 99% in admissions in Dili isolation centres.



This chart shows the total number of people admitted to isolation centres and auto-isolation (at home) in 12 municipalities compared to Dili. Throughout Timor-Leste, patients admitted to isolation centres have steadily decreased.

VACCINATION

At the time of writing this report (09 Nov 21), in total, 964,684 COVID-19 vaccine doses comprising 584,860 first doses (coverage 75.9% among population aged 18 years and above and 6.5% among the population aged 12 years to <18 years) and 379,824 second doses (coverage 50.3% among population aged 18 years and above) were administered in Timor-Leste. The breakdown of the number of doses administered and coverage by vaccine product and vaccine dose is illustrated in Table 1.

Table 1: Number of COVID-19 vaccine doses administered and coverage in Dili and Timor-Leste by vaccine brand and doses as of 10:00hrs 09/11/2021

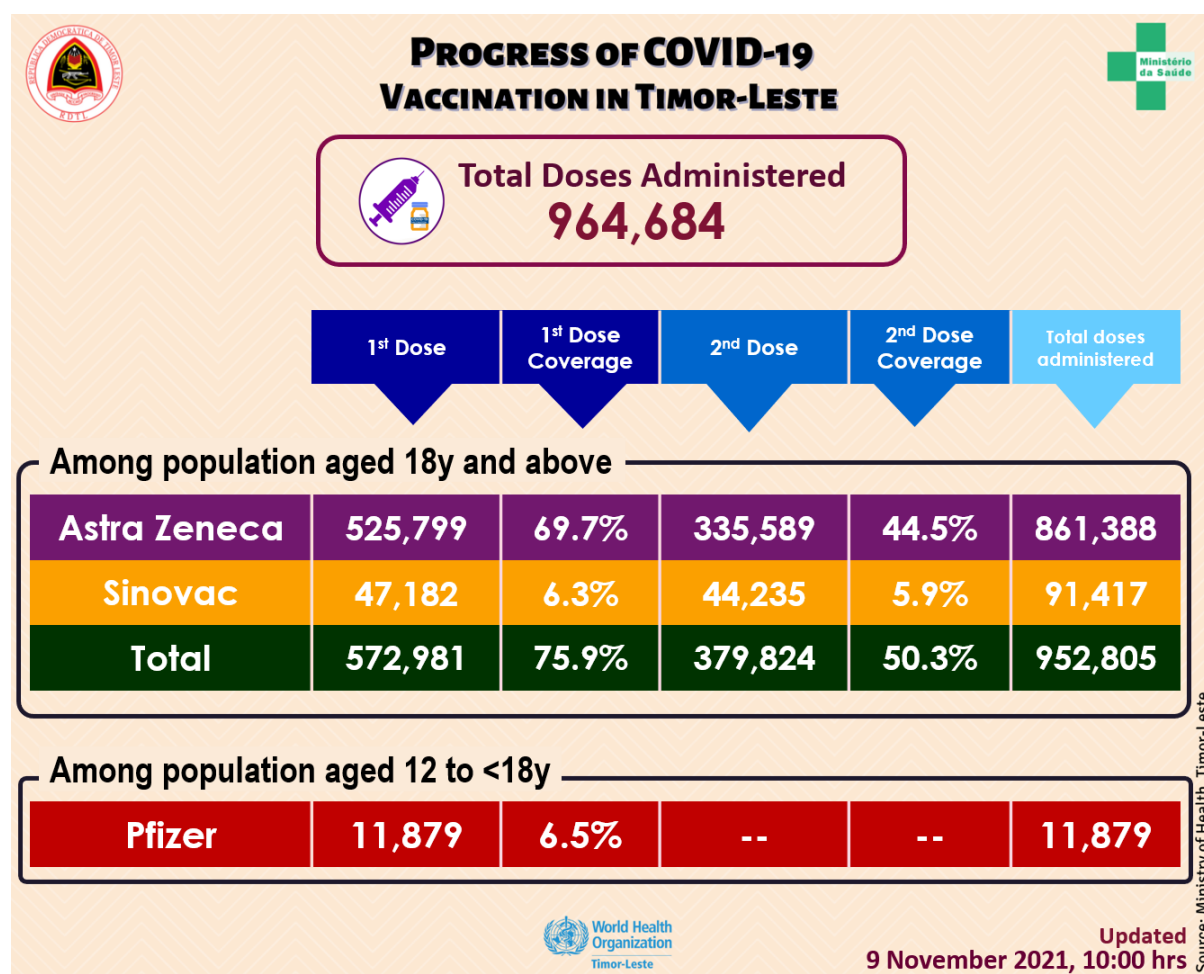


Figure 1: Coverage of COVID-19 vaccination by municipality in Timor-Leste as of 10:00hrs 09/11/2021

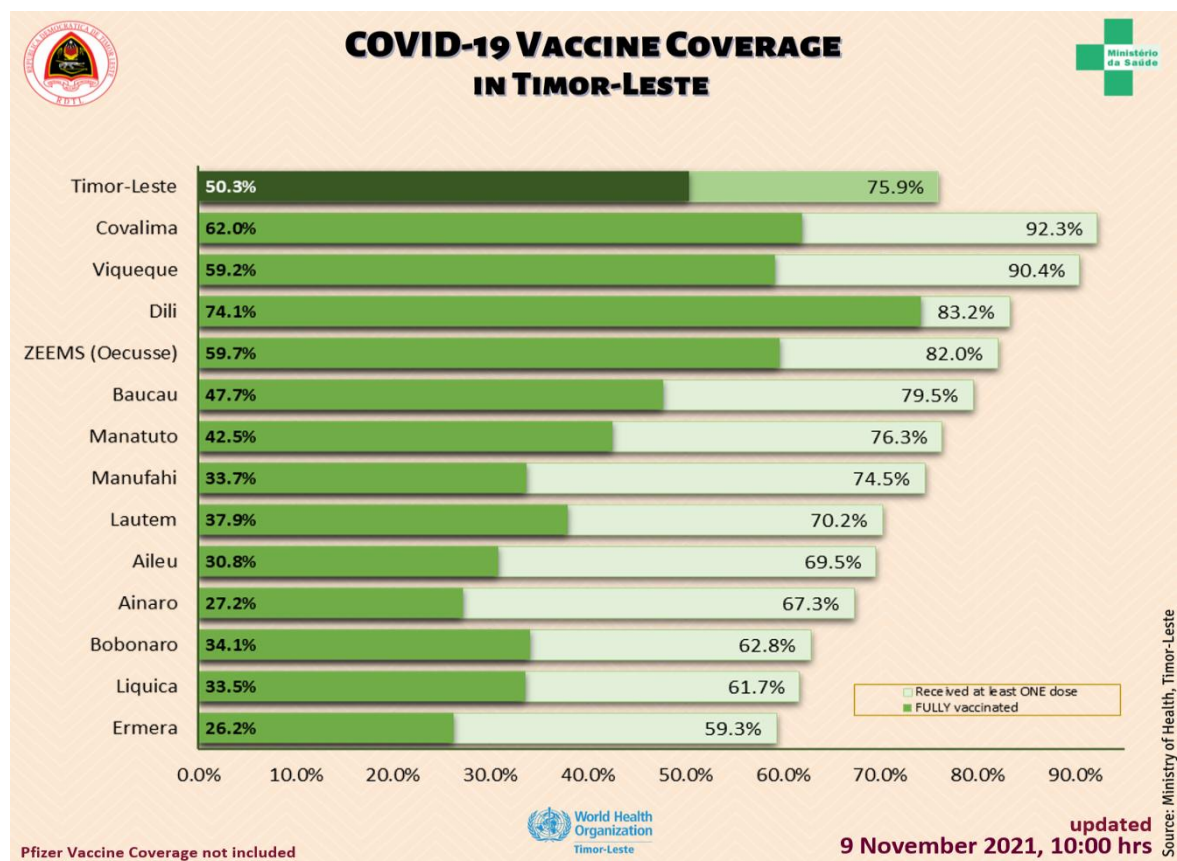


Table 2: Total number of individuals vaccinated with all the vaccine products (AstraZeneca, Sinovac, and Pfizer) and AEFI by sex by district in Timor-Leste as of 10:00 hrs 09/11/2021

Municipality	Number Vaccinated						AEFI		
	First Dose			Second Dose			Male	Female	Total
	Male	Female	Total	Male	Female	Total			
Dili	104,260	85,541	189,801	88,389	70,026	158,415	13	24	37
Aileu	11,431	10,278	21,709	5,629	3,990	9,619	1	1	2
Ainaro	12,317	11,328	23,645	5,411	4,142	9,553	0	0	0
Baucau	29,285	28,990	58,275	19,116	15,864	34,980	0	0	0
Bobonaro	18,660	16,988	35,648	10,925	8,407	19,332	4	6	10
Covalima	18,689	18,424	37,113	13,197	11,730	24,927	7	6	13
Ermera	23,810	20,752	44,562	11,675	8,007	19,682	0	0	0
Lautem	12,488	13,074	25,562	7,138	6,677	13,815	2	0	2
Liquica	14,337	13,525	27,862	8,297	6,846	15,143	0	1	1
Manatuto	11,375	10,305	21,680	6,737	5,340	12,077	2	0	2
Manufahi	13,075	11,795	24,870	6,694	4,563	11,257	1	2	3
Viqueque	19,518	20,222	39,740	13,325	12,675	26,000	4	0	4
ZEEMS (Oecusse)	16,972	17,421	34,393	12,711	12,313	25,024	0	0	0
Total (without Dili)	201,957	193,102	395,059	120,855	100,554	221,409	21	16	37
Total (Timor-Leste)	306,217	278,643	584,860	209,244	170,580	379,824	34	40	74

Figure 2: Weekly progress of vaccination in Timor-Leste during as of 10:00 hrs 09/11/2021

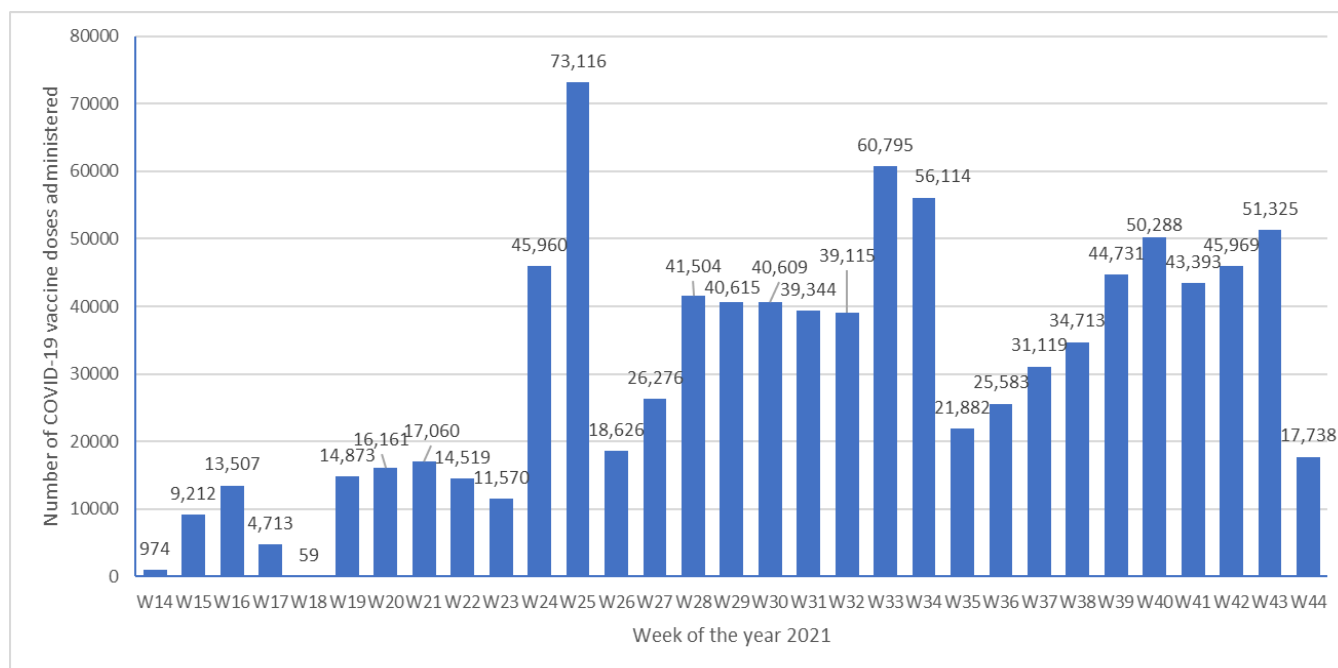


Table 3. Number of individuals among population aged 12 years to <18 years and above* vaccinated with Pfizer vaccine and coverage by district in Timor-Leste as of 10:00hrs 09/11/2021

Municipality	12to <18y Population	First Dose				Second Dose			
		12 to <18y Students	12 to <18y Non-students	Total	Coverage	12 to <18y Students	12 to <18y Non-students	Total	Coverage
Dili	41,822	11,874	5	11,879	28.4%	-	-	-	0.0%
Aileu	7,770	-	-	-	0.0%	-	-	-	0.0%
Ainaro	10,253	-	-	-	0.0%	-	-	-	0.0%
Baucau	18,189	-	-	-	0.0%	-	-	-	0.0%
Bobonaro	14,466	-	-	-	0.0%	-	-	-	0.0%
Covalima	9,729	-	-	-	0.0%	-	-	-	0.0%
Ermera	20,564	-	-	-	0.0%	-	-	-	0.0%
Lautem	10,447	-	-	-	0.0%	-	-	-	0.0%
Liquica	11,137	-	-	-	0.0%	-	-	-	0.0%
Manatuto	7,108	-	-	-	0.0%	-	-	-	0.0%
Manufahi	8,267	-	-	-	0.0%	-	-	-	0.0%
Viqueque	11,490	-	-	-	0.0%	-	-	-	0.0%
ZEEMS (Oecusse)	10,565	-	-	-	0.0%	-	-	-	0.0%
Total (without Dili)	139,985	-	-	-	0.0%	-	-	-	0.0%
Total (Timor-Leste)	181,807	11,874	5	11,879	6.5%	-	-	-	0.0%

*Based on 2021 population projections

Table 4. Number of individuals among eligible population (18 years and above*) vaccinated with AstraZeneca and Sinovac in Timor-Leste with COVID-19 vaccine and coverage as of 10:00hrs 09/11/2021

Municipality	Eligible Population			Number vaccinated & Coverage											
	High Risk Groups (20% Pop.)	18-59y no comorbidity (80% Pop.)	Total	First Dose						Second Dose					
				High Risk Groups (20% Pop.)	Coverage	18-59y no comorbidity (80% Pop.)	Coverage	Total	Coverage	High Risk Groups (20% Pop.)	Coverage	18-59y no comorbidity (80% Pop.)	Coverage	Total	Coverage
Dili	29,980	183,822	213,802	52,891	176.4%	125,031	68.0%	177,922	83.2%	33,153	110.6%	125,262	68.1%	158,415	74.1%
Aileu	6,292	24,943	31,235	10,743	170.7%	10,966	44.0%	21,709	69.5%	4,766	75.7%	4,853	19.5%	9619	30.8%
Ainaro	7,410	27,726	35,136	5,729	77.3%	17,916	64.6%	23,645	67.3%	2,599	35.1%	6,954	25.1%	9553	27.2%
Baucau	18,141	55,175	73,316	16,708	92.1%	41,567	75.3%	58,275	79.5%	9,439	52.0%	25,541	46.3%	34980	47.7%
Bobonaro	13,268	43,476	56,744	9,735	73.4%	25,913	59.6%	35,648	62.8%	5,511	41.5%	13,821	31.8%	19332	34.1%
Covalima	8,725	31,503	40,228	9,728	111.5%	27,385	86.9%	37,113	92.3%	6,304	72.3%	18,623	59.1%	24927	62.0%
Ermera	14,350	60,793	75,143	9,784	68.2%	34,778	57.2%	44,562	59.3%	3,599	25.1%	16,083	26.5%	19682	26.2%
Lautem	8,455	27,963	36,418	7,623	90.2%	17,939	64.2%	25,562	70.2%	4,396	52.0%	9,419	33.7%	13815	37.9%
Liquica	9,588	35,597	45,185	7,096	74.0%	20,766	58.3%	27,862	61.7%	3,575	37.3%	11,568	32.5%	15143	33.5%
Manatuto	6,701	21,718	28,419	6,234	93.0%	15,446	71.1%	21,680	76.3%	3,165	47.2%	8,912	41.0%	12077	42.5%
Manufahi	7,595	25,766	33,361	8,685	114.4%	16,185	62.8%	24,870	74.5%	5,101	67.2%	6,156	23.9%	11257	33.7%
Viqueque	11,034	32,905	43,939	12,092	109.6%	27,648	84.0%	39,740	90.4%	8,001	72.5%	17,999	54.7%	26000	59.2%
ZEEMS (Oecusse)	9,408	32,534	41,942	11,381	121.0%	23,012	70.7%	34,393	82.0%	7,187	76.4%	17,837	54.8%	25,024	59.7%
Total (without Dili)	120,967	420,098	541,065	115,538	95.5%	279,521	66.5%	395,059	73.0%	63,643	52.6%	157,766	37.6%	221,409	40.9%
Total (Timor-Leste)	150,947	603,920	754,867	168,429	111.6%	404,552	66.99%	572,981	75.9%	96,796	64.1%	283,028	46.9%	379,824	50.3%

*Based on 2021 population projections. Population with Comorbidity 12.5% among 30-59y based on 2016 DHS data

High Risk Groups (20% of the population) - Healthcare staff, other front line staff, aged 60y and above, and 18-59y with comorbidity

18-59y with no comorbidity (80% of the population)

Table 5: COVID-19 Coverage among TOTAL POPULATION by District as of 10:00 hrs 09/11/2021

Municipality	Total Population *	Number Vaccinated & Coverage			
		First Dose		Second Dose	
		Number Vaccinated	Coverage	Number Vaccinated	Coverage
Dili	352,553	189,801	53.8%	158,415	44.9%
Aileu	56,242	21,709	38.6%	9,619	17.1%
Ainaro	65,509	23,645	36.1%	9,553	14.6%
Baucau	126,996	58,275	45.9%	34,980	27.5%
Bobonaro	99,932	35,648	35.7%	19,332	19.3%
Covalima	70,194	37,113	52.9%	24,927	35.5%
Ermera	139,692	44,562	31.9%	19,682	14.1%
Lautem	66,938	25,562	38.2%	13,815	20.6%
Liquica	81,293	27,862	34.3%	15,143	18.6%
Manatuto	49,417	21,680	43.9%	12,077	24.4%
Manufahi	57,831	24,870	43.0%	11,257	19.5%
Viqueque	72,042	39,740	55.2%	26,000	36.1%
ZEEMS (Oecusse)	79,141	34,393	43.5%	25,024	31.6%
Total (without Dili)	965,227	395,059	40.9%	221,409	22.9%
Total (Timor-Leste)	1,317,780	584,860	44.4%	379,824	28.8%

* Based on 2021 population projections

Table 6: Number of individuals TO BE VACCINATED by District as of 10:00 hrs 09/11/2021

Municipality	Total Population *	Number TO BE VACCINATED and Percentage			
		First Dose		Second Dose	
		Number to be Vaccinated	Percentage	Number to be Vaccinated	Percentage
Dili	352,553	169,048	47.9%	194,932	55.3%
Aileu	56,242	35,019	62.3%	47,454	84.4%
Ainaro	65,509	43,341	66.2%	57,414	87.6%
Baucau	126,996	69,188	54.5%	92,698	73.0%
Bobonaro	99,932	65,693	65.7%	81,483	81.5%
Covalima	70,194	34,455	49.1%	47,306	67.4%
Ermera	139,692	96,696	69.2%	122,044	87.4%
Lautem	66,938	42,159	63.0%	53,799	80.4%
Liquica	81,293	54,579	67.1%	67,021	82.4%
Manatuto	49,417	28,043	56.7%	38,097	77.1%
Manufahi	57,831	33,569	58.0%	47,249	81.7%
Viqueque	72,042	32,740	45.4%	47,094	65.4%
ZEEMS (Oecusse)	79,141	45,041	56.9%	55,271	69.8%
Total (without Dili)	965,227	580,523	60.1%	756,930	78.4%
Total (Timor-Leste)	1,317,780	749,571	56.9%	951,862	72.2%

* Based on 2021 population projections

SITUATIONAL ANALYSIS

- The level of transmission remains low across the country. There have been no cases in the last few days in any of the municipalities including Dili. There has been no COVID-19 related death in the past seven days. The test positivity rate remains low too. All these indicate that the current wave of transmission is now limited to sporadic outbreaks in specific areas and populations.
- Efforts should be made to collect more specimens from health care facilities, and other event-based surveillance sites and populations. Meanwhile, case investigation and contact tracing should continue to be carried out to better understand the source of infection and quarantine the contacts.
- Intensify the immunization campaign and increase the coverage, particularly in the under-covered and remote areas.
- Interruption of health services is a concern, including delayed reporting of health data across different programmes. Health facilities and offices at different levels should pay equal attention to their routine work, while supporting the current COVID-19 control activities particularly the immunization campaign.

CURRENT CONCERN

Pfizer vaccine for adolescents

A Phase 3 trial in children aged 12-15 years showed high efficacy and good safety in this age group, leading to an extension of the previous age indication from 16 years onwards down to age 12 onwards.

Evidence suggests that adolescents, particularly older adolescents, are as likely to transmit SARS-CoV-2 as adults do. WHO recommends that countries should consider using the vaccine in children aged 12 to 15 only when high vaccine coverage with 2 doses has been achieved in the high priority groups as identified in the WHO Prioritization Roadmap.

Children 12-15 years of age with comorbidities that put them at significantly higher risk of serious COVID-19 disease, alongside other high-risk groups, may be offered vaccination.

What is the recommended dosage?

A protective effect starts to develop 12 days after the first dose, but full protection requires two doses which WHO recommends be administered with a 21 to 28-day interval. Additional research is needed to understand longer-term potential protection after a single dose. It is currently recommended that the same product should be used for both doses.

Is it safe?

WHO granted the Pfizer BioNTech vaccine EUL on 31 December 2020. WHO has thoroughly assessed the quality, safety, and efficacy of the vaccine and has recommended its use for persons above the age of 16.

The Global Advisory Committee on Vaccine Safety, a group of experts that provides independent and authoritative guidance to WHO on the topic of safe vaccine use, receives and assesses reports of suspected safety events of potentially international impact.

Source: [The Pfizer BioNTech \(BNT162b2\) COVID-19 vaccine: What you need to know](#)

AVAILABLE RESOURCES

- [For public and professionals on prevention, treatment, and vaccination etc.](#)
- [WHO Recommendations for COVID-19 Related Decisions](#)
- WHO Free Courses in Tetum – [OpenWHO.org](#)

COVID-19 INFORMATION AND MEDIA QUERIES

- The MoH has established a hotline number – 119 – for COVID-19 on which people can call to get any COVID-19 related information.
- Additionally, [MoH Facebook page](#) provides timely updates on COVID-19 developments in the country.
- WHO Timor-Leste through its [Facebook page](#) and [Twitter handle](#) also disseminates information on preventive measures, questions and answers, myth-busters and latest updates on COVID-19 globally and nationally.
- For media queries and interviews requests can be sent to singhsho@who.int and hasane@who.int