

Moras virus Corona 2019 (COVID-19)

Relatóriu Situasaun – 125

Timor-Leste



World Health
Organization

Timor-Leste

- Dados relata to'o loron 9 Novembru 2021

SITUASAUN IHA NÚMERU

TIMOR-LESTE



Kumulativu
19,804 (14)



Rekuperadu (foun)
19,672 (36)



Kazu ativu
10



Óbitu (foun)
122 (0)

GLÓBÁL



Kazu
250,154,972



Óbitu
5,054,267

PROGRESU IMUNIZASAUN COVID-19



Doze 1^a – **572,981**
Kobertura – **75.9%**



Doze 2^a – **335,589**
Kobertura – **50.3%**

* Bazeia ba dados ne'ebé pública husi [Ministerio da Saúde](#)

PROGRESU IMUNIZASAUN COVID-19



Doze vasina
7,084,922,999

SUMÁRIU

- Dezde edisaun ikus relatóriu situasaun, Ministeriu Saúde relata tan kazu foun COVID-19 hamutuk **14**, kazu rekuperadu hamutuk **36** no kazu óbitu **0**. Número kazu foun COVID-19 no kazu óbitu komesa tuun dezde fulan Agostu ne'e remata.
- Atu hasa'e kobertura vasina ba grupu idade 12 to'o menus husi 18, Ministériu Saúde no Ministériu Edukasaun ho apoiu husi OMS no UNICEF kontinua hala'o advokasia ba vasina COVID-19 Pfizer ba manorin nain no inan-aman husi labarik idade 12 to'o menus husi 18 kona-ba kampaña vasina COVID-19 Pfizer iha Dili.
- Ho apoiu husi OMS ho finansia husi Uniaun Europeia, ekipa kompostu husi membru Pilar 3 no Pilar 7 Ministériu Saúde agora daudaun hala'o hela avaliasaun ba kazu mortalidade iha teritóriu tomak hamutuk ho autoridade lokál sira. Objetivu husi atividade ida ne'e atu hatene liután possibilidade kauza husi mate durante fulan hirak ikus ne'e liuhusi halo autopsia verbal no analize karik iha possibilidade kazu mortalidade barak iha teritóriu tomak. Atividade ida ne'e sei remata iha fulan Dezembru.

- Transmission Assessment Survey (TAS), peskiza integradu ba prevalénsia NTD nian, hahú iha Oecusse husi loron 9 Novembru, 2021. Oecusse mak munisípiu ikus liu iha territóriu tomak hodi hala’o peskiza ida ne’e bazeadu iha eskola hodi bele determina prevalénsia moras NTD haat, limfatiku filariasis (LF), lumbriga da’et husi rai (STH), framboesia no scabies. Ho apoiu husi KOICA, TAS iha Timor-Leste mós sai ona hanesan plataforma ida hodi avalia estatutu nutrisional husi labarik estudante sira ne’ebé partisipa iha peskiza ne’e no mós informa kona-ba edukasaun saúde ba estudante sira. TAS ne’e hahú husi munisípiu Covalima, Bobonaro no Ainaro iha Setembru 2020, estudante liu husi 9,000 husi klase 1 no 2 iha eskola 204 husi munisípiu 12 ezeptu Oecusse mak seidauk halo teste LF iha laboratóriu no halo inspesaun ba infesaun kulit. Durante ne’e rekolla ona amostra feze 7,500 no halo ona ezaminasaun laboratóriu ba STH iha Laboratóriu Nasionál Saúde. Iha Oecusse, TAS nia estudante alvu iha 2,000 husi eskola 30 no ezaminasaun amostra feze sei hala’o ho ekipa conjunta LNS nian, Ospital Referál Oecusse no OMS. Rezultadu peskiza ida ne’e sei guia Programa Nasionál ba NTD hodi bele foti desizaun programátiku ba pasu tuirmai ba eliminasaun no kontrole NTD iha TL.
- Atu mantein serbisu esensiais saúde nian, MS no ekipa vijilánsia EPI no LNS ho apoiu husi OMS hala’o supervizaun suportivu durante semana ida iha Ospital Referál Maubisse no Covalima ho SSK sira seluk hodi haforsa vijilánsia ba moras ne’ebé bele prevene liuhusi vasina durante pandemia nia laran. Alende halo supervizaun suportivu, ekipa sira mós hala’o treinamentu ba pesoál saúde sira iha facilidade saúde sira.
- Depois munisípiu Dili, Liquica, Aileu, Ainaro, Manufahi, no Viqueque – Lautem mak munisípiu ida ne’ebé agora daudaun hala’o hela demonstrasaun ba Avaliasaun Vulnerabilidade ba moras TB iha terrenu, ho apoiu tékniku husi OMS Timor-Leste.
- Atu mantein serbisu saúde esensiál, MS ho asisténsia tékniku ho finansia husi OMS hala’o sesaun sensitizasaun durante loron tolu kona-ba Sistema baze de dados ba defeitu iha bebé foin moris ba Departamentu Saúde Maternál Infantil iha ospital referral lima. Dados ne’ebé rekolla sei kontribui ba baze de dados elektróniku SEAR NBDD ne’ebé sei ajuda identifika no halo dokumentasaun ba defeitu sira bainhira moris, ne’ebé sei ajuda foti medidas prevensaun sedu bazeadu ba evidénsia durante vizita kuidaun antenatal.
- MS, ho apoiu tékniku no finansia husi OMS hala’o orientasaun kona-ba implementasaun Sistema avaliasaun ba vijilánsia mortalidade iha maternal no perinatal (MPDSR) no halo mós autopsia verbal iha nivel SSK ba munisípiu Bobonaro, Lautem no Manatuto hodi reinforsa implementasaun MPDSR iha ospital referral nia laran.
- OMS kontinua fó apoiu ba MS liuhusi parseiru implementadór, SABEH, hodi hala’o konsultasaun médiku ba comunidade no halo vizita domisiliáriu. Dezde atividade ne’e hahú, iha ema 7,313 maka hetan ona benefísiu husi atividade refere. Alende ne’e, programa ida ne’e mós kontribui ona ba kampaña vasina COVID-19, sensitizasaun medida prevensaun

COVID-19, promosaun saúde oral iha comunidade ba munisípiu tolu – Bobonaro, Covalima no Dili.

ATUALIZASAUN EPIDEMIOLOGÍKU

- Kazu COVID-19 kumulativu no kazu foun**

Distribusaun kazu foun ne'ebé relata, kazu recuperadu no kazu ativu tur munisípiu, to'o loron 2 November 2021

Munisípiu	Kazu foun (3 - 9 Nov. 2021)	Loron 7 - mudansa % (kazu)*	Kazu kumulativu	Kazu recuperadu (3 - 9 Nov. 2021)	Kazu recuperadu kumulativu	Kazu óbitu foun (3 - 9 Nov. 2021)	Kazu óbitu kumulativu	Kazu ativu (9 Nov 2021)
Aileu	0	0	126	0	125	0	1	0
Ainaro	0	0	227	0	224	0	3	0
Baucau	2	200	1538	0	1527	0	7	4
Bobonaro	1	0	602	0	590	0	9	3
Covalima	1	-50	786	2	783	0	3	0
Dili	7	-83	13710	26	13605	1	81	24
Ermera	0	0	1113	0	1111	0	2	0
Lautem	0	0	183	1	178	0	5	0
Liquica	0	0	125	0	124	0	1	0
Manatuto	0	0	203	0	201	0	2	0
Manufahi	0	0	265	0	265	0	0	0
RAEOA	0	-100	393	1	390	0	3	0
Viqueque	1	-67	519	1	513	0	5	1
TOTAL	12	-75	19790	31	19636	1	122	32

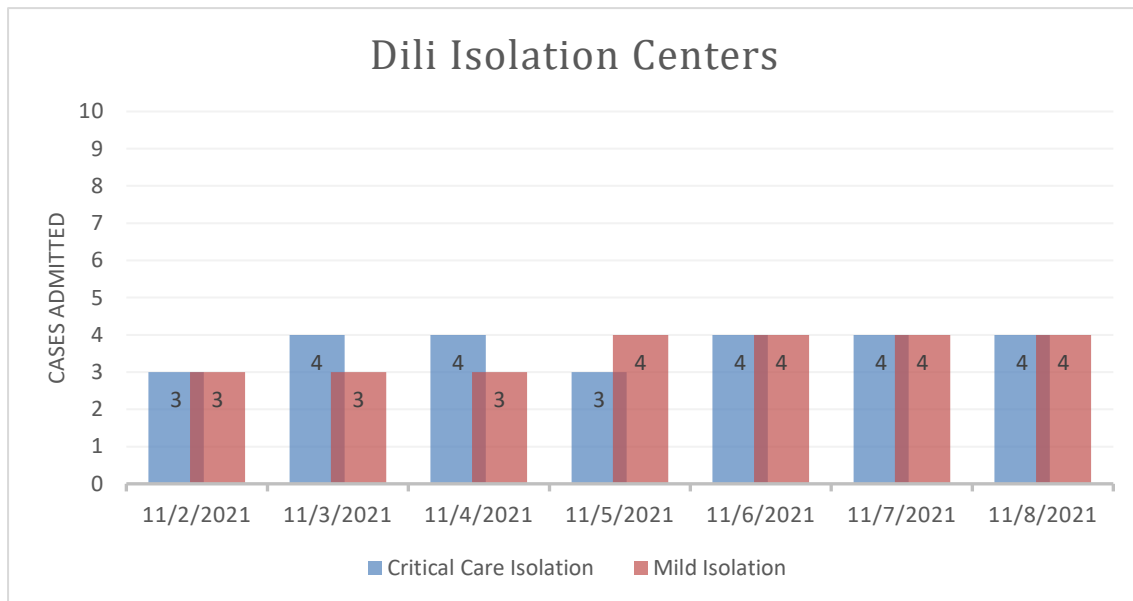
*Mudansa kazu COVID-19 kompara ho loron 7 ikus

- Iha kazu 14 ne'ebé relata iha periodu relatóriu (3 - 9 Novembru). Kazu hirak ne'e, 13 maka husi Dili, no ida husi Covalima. Númeru kazu aumenta maibé kontinua estavel kompara ho period relatóriu ikus.
- Laiha kazu óbitu ida maka relata iha Timor-Leste durante periodu relatóriu ida ne'e.
- Númeru kazu ativu agora iha 10, ida ne'e númeru kazu kiik tebes dezde propagasaun moras ne'e hahú.

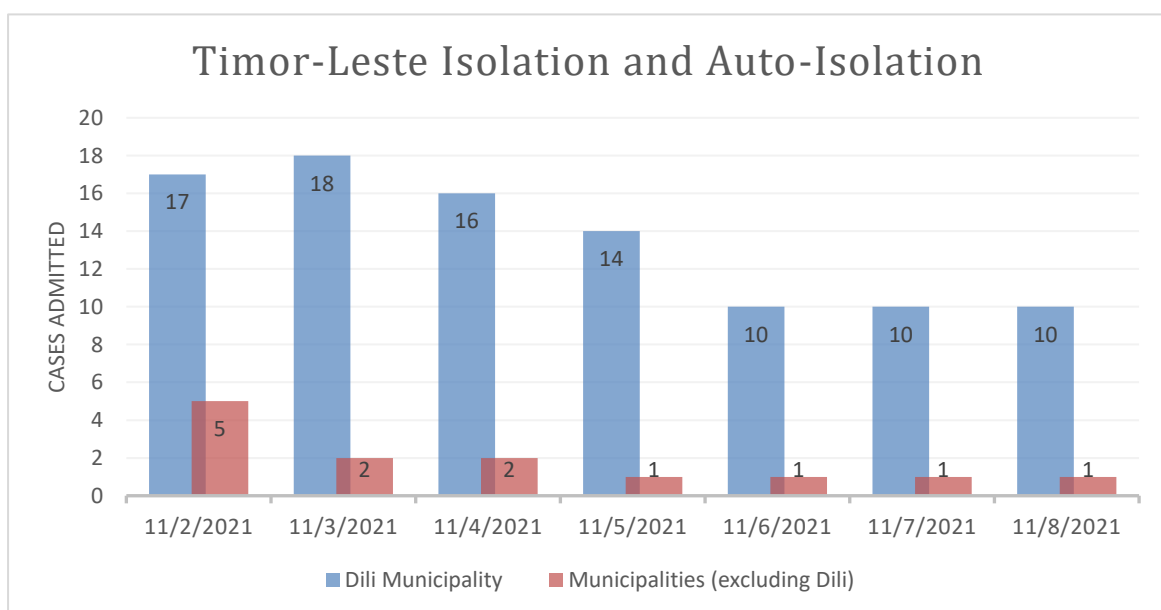
- **Teste diáriu, taxa pozitivu no taxa teste positividade**

- Durante data relatóriu atuál ida ne'e husi loron 3 – 9 Novembru, halo ona teste ba amostra 1,281, kompara ho teste 1,505 iha loron 7 ikus.
- Taxa teste positividade husi relatóriu ida ne'e ho médiu 1.1% – aumenta 37% kompara ho periodu relatóriu semana kotuk.

JESTAUN KAZU COVID-19



Númeru pasiente tama izolamentu hahú menus iha fulan Outubru 2021 nia laran. Númeru pasiente ne'ebé baixa iha sentru izolamentu krítiku (Lahane no Vera Cruz) mós continua menus no pasiente baixa iha entre ema nain 3-4. Dezde fin de fulan Agostu, persentajen baixa komesa tuun ba 99% iha sentru izolamentu sira.



- Gráfiku iha leten ne'e hatudu número paciente ne'ebé tama baixa iha sentru izolamentu ho halo auto-isolamentu (iha uma) iha munisípiu 12 kompara ho Dili. Iha território tomak, número paciente sira ne'ebé tama baixa iha sentru izolamentu kontinua tuun.

IMUNIZASAUN COVID-19

Iha periodu relatóriu ida ne'e (9 Nov 2021), total doze vasina COVID-19 ne'ebé administra 964,684 kompostu husi doze dahuluk 584,860 (kobertura 75.9% entre populaasaun idade 18 no liu no 6.5% entre populaasaun idade 12 to'o <18) no doze daruak 379,824, (kobertura 50.3%) maka administra ona iha território tomak iha Timor-Leste. Detallu husi número doze vasina ne'ebé administra ona ba doze dahuluk no doze daruak ba populaasaun grupu prioridade sira bele refere ba Tabela 1.

Tabela 1: Número doze vasina COVID-19 ne'ebé administra ona no kobertura iha Dili no Timor-Leste tuir vasina nia marka no doze sira, atualizada to'o 10:00hrs 9/11/2021

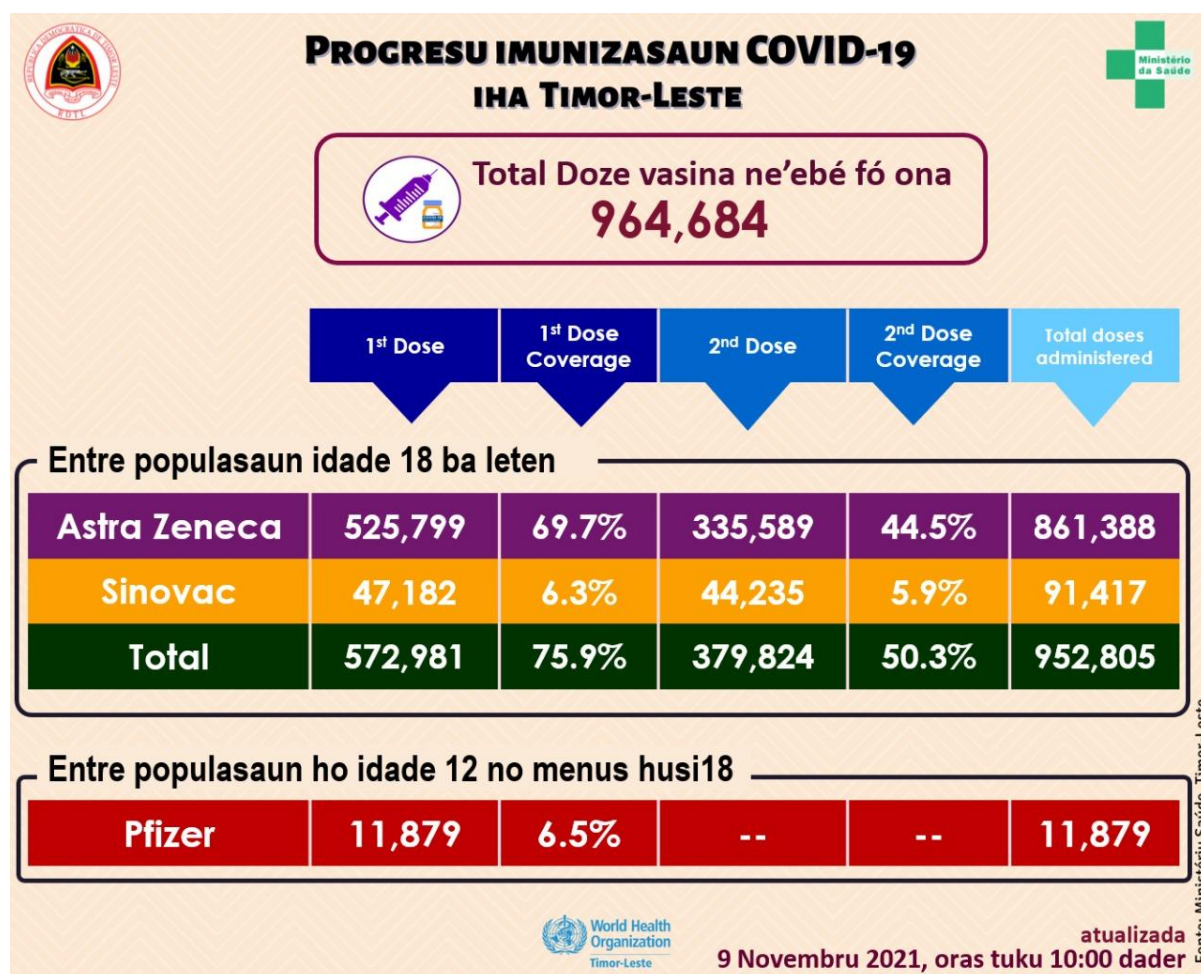


Figura 1: Kobertura vasina COVID-19 tuir munisípiu iha Timor-Leste atualizada 10:00 hrs 9/11/2021

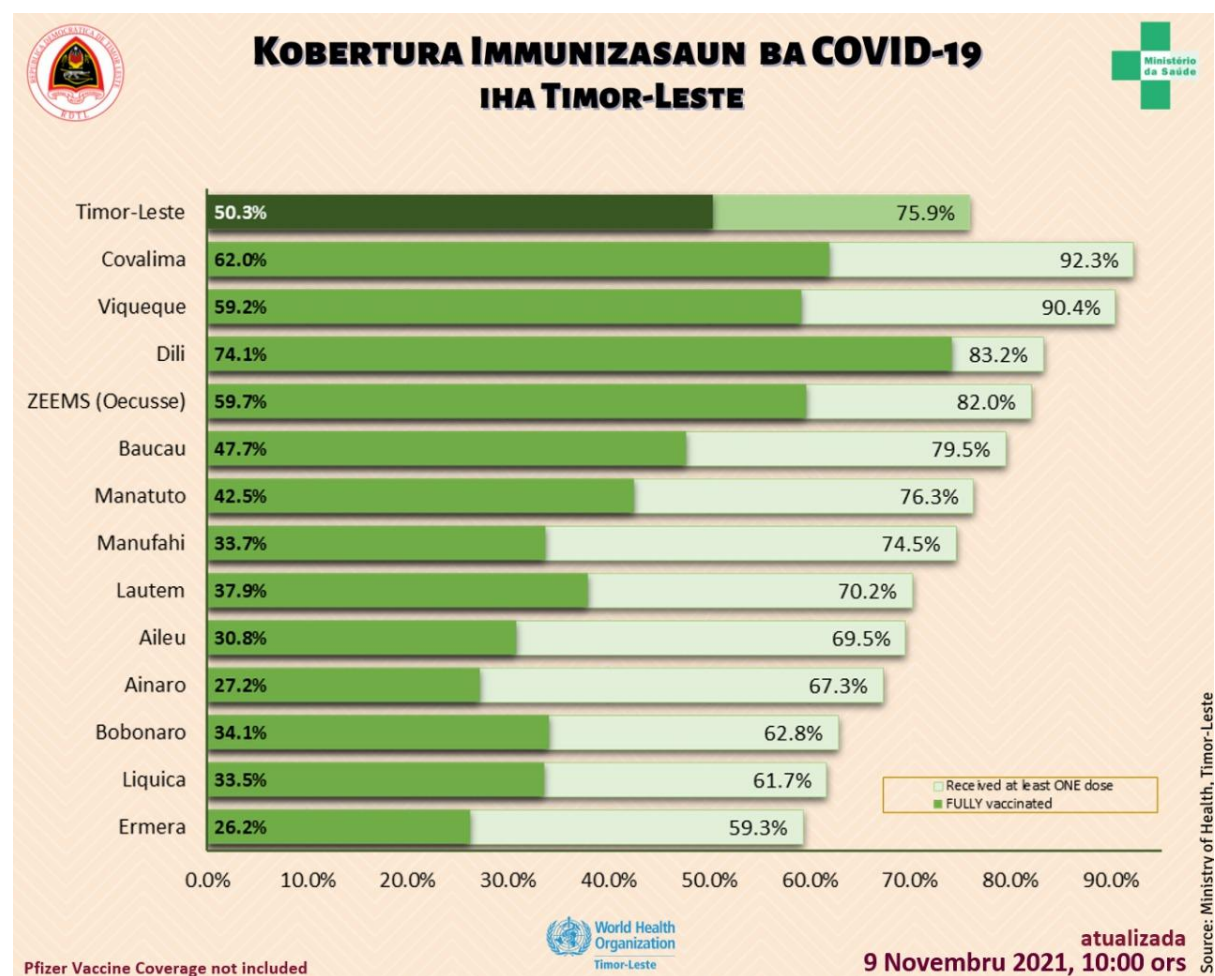


Tabela 2: Númeru ema sira ne'ebé vasinadu no EADI tuir sexu atualizada to'o 10:00 hrs 2/11/2021

Municipality	Number Vaccinated						AEFI		
	First Dose			Second Dose			Male	Female	Total
	Male	Female	Total	Male	Female	Total			
Dili	104,260	85,541	189,801	88,389	70,026	158,415	13	24	37
Aileu	11,431	10,278	21,709	5,629	3,990	9,619	1	1	2
Ainaro	12,317	11,328	23,645	5,411	4,142	9,553	0	0	0
Baucau	29,285	28,990	58,275	19,116	15,864	34,980	0	0	0
Bobonaro	18,660	16,988	35,648	10,925	8,407	19,332	4	6	10
Covalima	18,689	18,424	37,113	13,197	11,730	24,927	7	6	13
Ermera	23,810	20,752	44,562	11,675	8,007	19,682	0	0	0
Lautem	12,488	13,074	25,562	7,138	6,677	13,815	2	0	2
Liquica	14,337	13,525	27,862	8,297	6,846	15,143	0	1	1
Manatuto	11,375	10,305	21,680	6,737	5,340	12,077	2	0	2
Manufahi	13,075	11,795	24,870	6,694	4,563	11,257	1	2	3
Viqueque	19,518	20,222	39,740	13,325	12,675	26,000	4	0	4
ZEEMS (Oecusse)	16,972	17,421	34,393	12,711	12,313	25,024	0	0	0
Total (without Dili)	201,957	193,102	395,059	120,855	100,554	221,409	21	16	37
Total (Timor-Leste)	306,217	278,643	584,860	209,244	170,580	379,824	34	40	74

Figura 2: Progresu semanal imunitasaun COVID-19 iha Timor-Leste atualizada to'o 10:00 hrs 9/11/2021

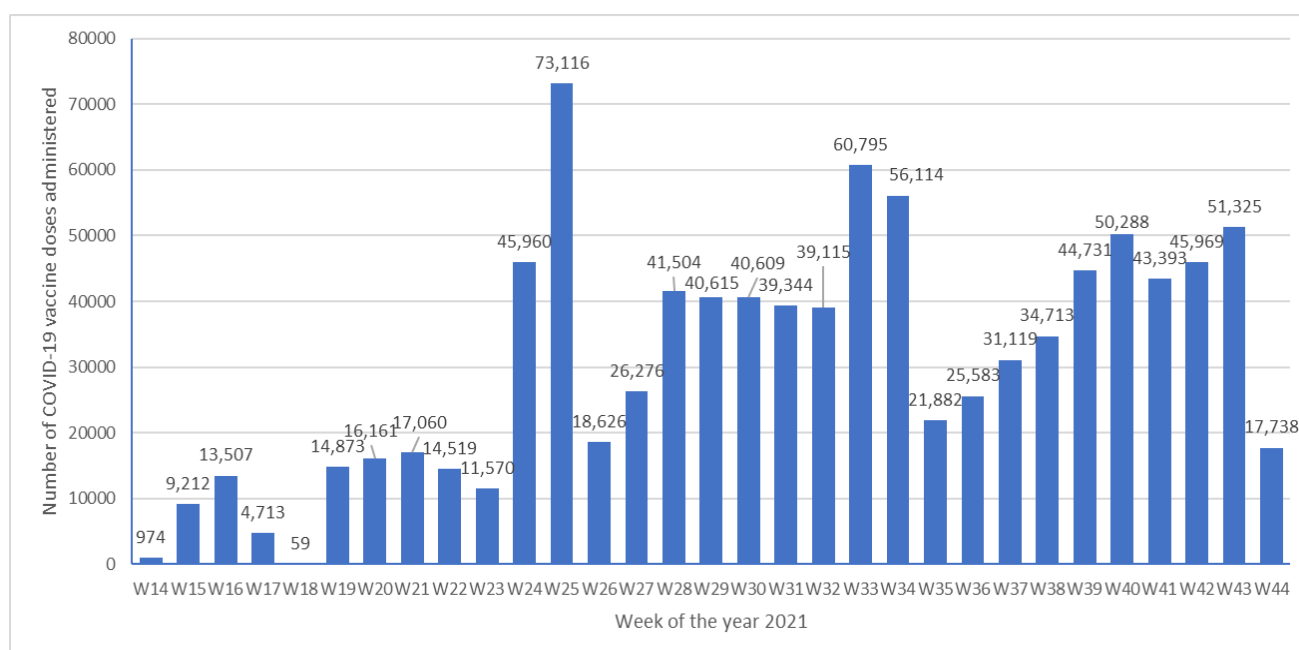


Tabela 3: Númeru populausaun idade 12 to'o <18 no liu* ne'ebé simu vasina Pfizer no kobertura tuir munisípiu iha Timor-Leste atualizada to'o 10:00 hrs 9/11/2021

Municipality	12to <18y Population	First Dose				Second Dose			
		12 to <18y Students	12 to <18y Non-students	Total	Coverage	12 to <18y Students	12 to <18y Non-students	Total	Coverage
Dili	41,822	11,874	5	11,879	28.4%	-	-	-	0.0%
Aileu	7,770	-	-	-	0.0%	-	-	-	0.0%
Ainaro	10,253	-	-	-	0.0%	-	-	-	0.0%
Baucau	18,189	-	-	-	0.0%	-	-	-	0.0%
Bobonaro	14,466	-	-	-	0.0%	-	-	-	0.0%
Covalima	9,729	-	-	-	0.0%	-	-	-	0.0%
Ermera	20,564	-	-	-	0.0%	-	-	-	0.0%
Lautem	10,447	-	-	-	0.0%	-	-	-	0.0%
Líquica	11,137	-	-	-	0.0%	-	-	-	0.0%
Manatuto	7,108	-	-	-	0.0%	-	-	-	0.0%
Manufahi	8,267	-	-	-	0.0%	-	-	-	0.0%
Viqueque	11,490	-	-	-	0.0%	-	-	-	0.0%
ZEEMS (Oecusse)	10,565	-	-	-	0.0%	-	-	-	0.0%
Total (without Dili)	139,985	-	-	-	0.0%	-	-	-	0.0%
Total (Timor-Leste)	181,807	11,874	5	11,879	6.5%	-	-	-	0.0%

*Based on 2021 population projections

Tabela 3: Númeru ema individuu entre populasaun elijivel sira (tinan 18 no liu*) ne'ebé vasinadu ona iha Timor-Leste ho vasina COVID-19 no kobertura atualizada to'o 10:00hrs 9/11/2021

Municipality	Eligible Population			Number vaccinated & Coverage											
	High Risk Groups (20% Pop.)	18-59y no comorbidity (80% Pop.)	Total	First Dose						Second Dose					
				High Risk Groups (20% Pop.)	Coverage	18-59y no comorbidity (80% Pop.)	Coverage	Total	Coverage	High Risk Groups (20% Pop.)	Coverage	18-59y no comorbidity (80% Pop.)	Coverage	Total	Coverage
Dili	29,980	183,822	213,802	52,891	176.4%	125,031	68.0%	177,922	83.2%	33,153	110.6%	125,262	68.1%	158,415	74.1%
Aileu	6,292	24,943	31,235	10,743	170.7%	10,966	44.0%	21,709	69.5%	4,766	75.7%	4,853	19.5%	9619	30.8%
Ainaro	7,410	27,726	35,136	5,729	77.3%	17,916	64.6%	23,645	67.3%	2,599	35.1%	6,954	25.1%	9553	27.2%
Baucau	18,141	55,175	73,316	16,708	92.1%	41,567	75.3%	58,275	79.5%	9,439	52.0%	25,541	46.3%	34980	47.7%
Bobonaro	13,268	43,476	56,744	9,735	73.4%	25,913	59.6%	35,648	62.8%	5,511	41.5%	13,821	31.8%	19332	34.1%
Covalima	8,725	31,503	40,228	9,728	111.5%	27,385	86.9%	37,113	92.3%	6,304	72.3%	18,623	59.1%	24927	62.0%
Ermera	14,350	60,793	75,143	9,784	68.2%	34,778	57.2%	44,562	59.3%	3,599	25.1%	16,083	26.5%	19682	26.2%
Lautem	8,455	27,963	36,418	7,623	90.2%	17,939	64.2%	25,562	70.2%	4,396	52.0%	9,419	33.7%	13815	37.9%
Liquica	9,588	35,597	45,185	7,096	74.0%	20,766	58.3%	27,862	61.7%	3,575	37.3%	11,568	32.5%	15143	33.5%
Manatuto	6,701	21,718	28,419	6,234	93.0%	15,446	71.1%	21,680	76.3%	3,165	47.2%	8,912	41.0%	12077	42.5%
Manufahi	7,595	25,766	33,361	8,685	114.4%	16,185	62.8%	24,870	74.5%	5,101	67.2%	6,156	23.9%	11257	33.7%
Viqueque	11,034	32,905	43,939	12,092	109.6%	27,648	84.0%	39,740	90.4%	8,001	72.5%	17,999	54.7%	26000	59.2%
ZEEMS (Oecusse)	9,408	32,534	41,942	11,381	121.0%	23,012	70.7%	34,393	82.0%	7,187	76.4%	17,837	54.8%	25,024	59.7%
Total (without Dili)	120,967	420,098	541,065	115,538	95.5%	279,521	66.5%	395,059	73.0%	63,643	52.6%	157,766	37.6%	221,409	40.9%
Total (Timor-Leste)	150,947	603,920	754,867	168,429	111.6%	404,552	66.99%	572,981	75.9%	96,796	64.1%	283,028	46.9%	379,824	50.3%

*Based on 2021 population projections. Population with Comorbidity 12.5% among 30-59y based on 2016 DHS data

High Risk Groups (20% of the popyulation) - Healthcare staff, other front line staff, aged 60y and above, and 18-59y with comorbidity

18-59y with no comorbidity (80% of the population)

Tabela 4: Kobertura vasina COVID-19 entre TOTAL POPULASAUN tuir munisípiu to'o oras 10:00 9/11/2021

Municipality	Total Population *	Number Vaccinated & Coverage			
		First Dose		Second Dose	
		Number Vaccinated	Coverage	Number Vaccinated	Coverage
Dili	352,553	189,801	53.8%	158,415	44.9%
Aileu	56,242	21,709	38.6%	9,619	17.1%
Ainaro	65,509	23,645	36.1%	9,553	14.6%
Baucau	126,996	58,275	45.9%	34,980	27.5%
Bobonaro	99,932	35,648	35.7%	19,332	19.3%
Covalima	70,194	37,113	52.9%	24,927	35.5%
Ermera	139,692	44,562	31.9%	19,682	14.1%
Lautem	66,938	25,562	38.2%	13,815	20.6%
Liquica	81,293	27,862	34.3%	15,143	18.6%
Manatuto	49,417	21,680	43.9%	12,077	24.4%
Manufahi	57,831	24,870	43.0%	11,257	19.5%
Viqueque	72,042	39,740	55.2%	26,000	36.1%
ZEEMS (Oecusse)	79,141	34,393	43.5%	25,024	31.6%
Total (without Dili)	965,227	395,059	40.9%	221,409	22.9%
Total (Timor-Leste)	1,317,780	584,860	44.4%	379,824	28.8%

*Based on 2021 population projections

Tabela 5: Númeru individuu ATU SIMU VASINA tuir munisípiu to'o oras 10:00 9/11/2021

Municipality	Total Population *	Number TO BE VACCINATED and Percentage			
		First Dose		Second Dose	
		Number to be Vaccinated	Percentage	Number to be Vaccinated	Percentage
Dili	352,553	162,752	46.2%	194,138	55.1%
Aileu	56,242	34,533	61.4%	46,623	82.9%
Ainaro	65,509	41,864	63.9%	55,956	85.4%
Baucau	126,996	68,721	54.1%	92,016	72.5%
Bobonaro	99,932	64,284	64.3%	80,600	80.7%
Covalima	70,194	33,081	47.1%	45,267	64.5%
Ermera	139,692	95,130	68.1%	120,010	85.9%
Lautem	66,938	41,376	61.8%	53,123	79.4%
Liquica	81,293	53,431	65.7%	66,150	81.4%
Manatuto	49,417	27,737	56.1%	37,340	75.6%
Manufahi	57,831	32,961	57.0%	46,574	80.5%
Viqueque	72,042	32,302	44.8%	46,042	63.9%
ZEEMS (Oecusse)	79,141	44,748	56.5%	54,117	68.4%
Total (without Dili)	965,227	570,168	59.1%	743,818	77.1%
Total (Timor-Leste)	1,317,780	732,920	55.6%	937,956	71.2%

*Based on 2021 population projections

ANALIZE SITUASAUN

- Nivel transmisaun kontinua ki'ik iha territóriu tomak. Durante loron hirak ne'e laiha kazu iha munisípiu sira inklui Dili. Laiha kazu óbitu relasiona ho COVID-19 iha loron hitu ikus ne'e. Taxa teste positividade kontinua kiik. Hirak ne'e hotu indika katak laloran transmisaun ida ne'e limitadu ba surtu esporádiku iha área no populasaun espesífiku.
- Esforsu hotu tenke kontinua halo hodi rekolla amostra barak liu tan husi facilidade saúde, no eventu seluk bazeadu ba fatin vijilánsia no populasaun sira. Enkuantu, investigasaun kazu no rastreamentu kontaktu tenke kontinua hala'o hodi komprende liután fonte infesaun no kontaktu sira iha kuarentena.
- Tenke intensifika kampaña imunizasaun no hasa'e kobertura, liuliu iha área sira ne'ebé seidauk hetan kobertura másimu no área remotas.
- Interupsaun serbisu saúde ne'e hanesan preokupasaun bo'ot ida, inklui relata dadus relatóriu iha programa oi-oin. Tenke tau matan ba facilidade saúde no eskritóriu sira iha nivel diferente ba sira-nia serbisu saúde rutina, enkuantu fó apoiu ba atividade sira hodi kontrole COVID-19 liuliu durante kampaña imunizasaun COVID-19.

PREOKUPASAUN ATUÁL

Vasina Pfizer ba adolexente sira

Ensaio klíniku ba labarik idade 12 to'o 15 hatudu iha efikasias boot no seguru ba grupu idade refere, ne'ebé rezulta iha estensaun husi indikasaun idade 16 to'o 12.

Evidénsia hatudu katak adolexente sira, liuliu adolexente bo'ot sira, bele hada'et moras SARS-CoV-2 ba adultu sira. OMS rekomenda katak nasaun sira tenke konsidera utiliza vasina iha labarik sira idade 12 to'o 15, bainhira iha ona kobertura vasina ne'ebé aas no atinji ona doze 2 ba grupu prioridade sira ne'ebé identifika ona iha *WHO Prioritization Roadmap*.

Labarik idade 12-15 ho moras ko-morbidade ho grupu risku aas sira seluk, bele simu vasina COVID-19, se bainhira sira iha risku aas hetan moras COVID-19,

Dosajen ne'ebé rekomenda?

Efeito protetivu hahú dezenvolve loron 12 hafoin simu vasina doze dahuluk, maibe protesaun kompletu presiza hetan tan doze daruak tuir rekomendasaun husi OMS ne'ebé sei administra entre loron 21 to'o 28 (periodu intervalu). Presiza halo peskiza adisionál hodi hatene liután kona-ba protesaun potenciál hafoin simu doze dahuluk. Agora daudaun rekomenda atu utiliza produktu ne'ebé hanesan ba vasina doze rua ne'e hotu.

Vasina ne'e seguru ka lae?

OMS aprova ona vasina Pfizer BioNTech iha lista EUL iha 31 Dezembru 2020. OMS halo ona avaliasaun rigoroza kona-ba qualidade, seguransa no efikasiasa husi vasina ne'e no fó ona rekomendasaun hodi utiliza iha ema idade 16 ba leten.

The Global Advisory Committee on Vaccine Safety, hanesan grupu peritu ne'ebé fornese guia independente no autoritativu ba OMS kona-ba tópicu seguru hodi utiliza vasina, avalia relatóriu sira ne'ebé iha dúvida kona-ba nia seguransa ne'ebé bele iha impaktu potensial iha nivel internasionál.

Fonte: [The Pfizer BioNTech \(BNT162b2\) COVID-19 vaccine: What you need to know](#)

REKURSU NE'EBÉ DISPONIVEL

- [Ba públiku jerál no profesionál saúde sira kona-ba prevensaun, tratamentu, no vasina, nsst.](#)
- [Rekomendasaun OMS ba Desizaun Relasiona ho COVID-19](#)
- Kursu gratuita iha Tetum – [OpenWHO.org](#)

KONTAKTU MÉDIA NO INFORMASAUN KONA-BA COVID-19

- Ministériu Saúde estabelese ona númeru *hotline* – 119 – ba COVID-19 ne'ebé maka ema hotu-hotu bele kontaktu hodi hetan informasaun relasiona ho COVID-19
- Alende ne'e, [Páijina Facebook MS](#) nian fornese atualizasaun loloos kona-ba desenvolvimentu COVID-19 iha rai laran
- OMS Timor-Leste liuhusi nia [Páijina Facebook](#) no [Twitter](#) mós disemina informasaun kona-ba medida preventiva, pergunta no resposta, *myth-buster* no atualizasaun ikus kona-ba COVID-19 iha mundu tomak no iha rai laran. Ba media no pedidu ba entrevista bele manda ba hasane@who.int ka wcotimorleste@who.int