

Moras virus Corona 2019 (COVID-19)

Relatóriu Situasaun – 127

Timor-Leste



World Health
Organization

Timor-Leste

- Dadus relata to'o loron 23 Novembru 2021

SITUASAUN IHA NÚMERU

TIMOR-LESTE



Kumulativu
19820 (8)



Rekuperadu (foun)
19691 (10)



Kazu ativu
7



Óbitu (foun)
122 (0)

GLÓBÁL



Kazu
257,469,528



Óbitu
5,158,211

PROGRESU IMUNIZASAUN COVID-19



Doze 1^a – **634,545**
Kobertura – **79.7%**



Doze 2^a – **426,978**
Kobertura – **55.7%**

* Bazeia ba dadus ne'ebé públika husi [Ministerio da Saúde](#)

PROGRESU IMUNIZASAUN COVID-19



Doze vasina
7,408,870,760

SUMÁRIU

- Dezde edisaun ikus relatóriu situasaun, Ministeriu Saúde relata tan kazu foun COVID-19 hamutuk **8**, kazu rekuperadu hamutuk **9** no kazu óbitu **0**. Número kazu foun COVID-19 no kazu óbitu kontinua iha número ki'ik.
- Konsultór internasionál nain 10 destaka ona ba munisípiu atu fó apoiu ba pesoal saúde sira iha baze hodi bele aselera imunizasaun COVID-19 iha rai laran no mós ba imunizasaun rutina nian.
- Ho finansia husi Uniaun Europeia, OMS Timor-Leste ona kaixa konsumiveis balun ba laboratóriu hodi bele utiliza halo teste amostra. Sasán hirak ne'e sei uza hodi halo teste amostra mikrobiolojia no mós ba teste biolojia molekulár iha Laboratóriu Nasionál Saúde, inklui mós teste PCR ba COVID-19.
- Baze de dadus TLHIS-CIT ne'ebé lansa iha loron 7 Abril 2021 iha Timor-Leste hamutuk ho kampaña imunizasaun COVID-19 no baze de dadus ne'e utiliza ho susesu hodi halo monitorizasaun progresu ba kampaña imunizasaun COVID-19. Maibé, ho introdusaun vasina Pfizer iha fulan Outubru 2021, iha mudansa balun ne'ebé maka halo ba sistema baze de dadus

no planeadu ona atu halo treinamentu ba pesoál HMIS no EPI iha terrenu. Ho apoiu husi OMS Timor-Leste, horseik hala'o ona formasaun dahuluk ba pesoál saúde sira iha munisípiu Viqueque ne'ebé partisipa husi funsionáriu DHPO husi servisu saúde munisípiu, médiku no enfermeirus sira husi kada SSK. Alende ne'e halo *data entry*, participantes sira mós hetan formasaun kona-ba analize dados no avaliasaun ba qualidade dados.

- Hanesan parte ida husi Semana Mundial ba Konsientizasaun Antimikróbiu, OMS Timor-Leste serbisu hamutuk ho Ministériu Saúde, Ministériu Agrikultura no Peskas, Laboratóriu Nasionál Saúde, no Menzies School of Health Research organiza event u ba konsientizasaun antibiótiku no ilumina estátua Cristo Rei ba kór azúl hodi marka partisipasaun iha Kampanha *Global Go Blue for AMR*. Partisipantes liu husi nain 400 ne'ebé kompostu husi, entidade governu nian, ONG, estudante universidade husi fakuldade (medisina, enfermagem no obstetrícia) no mós ho comunidade sira maka partisipa iha event u refere.
- OMS Timor-Leste fó apoiu Ministériu Saúde liuhusi departamentu Maternidade Saúde Infantil ne'ebé iha Diresaun Nasionál Saúde na Família organiza orientasaun durante loron 3 kona-ba sistema vijilánsia online ba defeitu moris ba diretores husi Ospitál Referál 5 inklui HNGV, xefe departamentu maternidade no pediatria nian husi ospitál referral 5 no HNGV. Iha orientasaun refere, fahe mós informasaun kona-ba NBDD, ICD 10 coding no sistema SOP.
- Diresaun Nasionál ba Apoiu Servisu Hospitalar, ho finansia husi OMS Timor-Leste, hala'o enkontru durante loron rua hodi avalia atividade ne'ebé implementa iha tinan 2021, inklui jestaun kazu COVID-19. Objetivu prinsipál husi enkontru ne'e maka atu avalia susesu sira, dezafiu no identifika prioridade no halo planu di'ak liután ba tinan 2021. Partisipa iha workshop ne'e maka diretores sira husi ekipa serbisu apoiu ospitálar no ospitál referál sira.
- OMS fó apoiu ba Departamentu Saúde Ambientál no Vijilánsia Saneamentu, Ministériu Saúde hala'o orientasaun ba pesoál saúde liu husi 119 ne'ebé kompostu husi pontu fokál ba saneamentu, pesoál ba limpeza no enfermeiru sira) kona-ba jestaun lixu inklui prevensaun kontrole infesaun iha munisípiu neen entre fulan Outubru to'o 23 Novembru 2021.
- Ekipa pilar 2 hamutuk ho inspetores sanitaria sira, tuir Planu Responde no Estratéjiku ba Prontidaun no Responde ba COVID-19 ne'ebé iha Ministériu Saúde nia okos kontinua hala'o inspeksaun saúde komunitária regulár ba prevensaun COVID-19 no medida prevensaun saúde sira seluk iha munisípiu Dili ne'ebé foka liu ba facilidade saúde, eskola, merkadu no fatin relijiozu sira, loja no fatin públiku sira seluk.
- OMS Timor-Leste kontinua fó apoiu MS liuhusi parseiru implementadór, SABEH, hodi hala'o konsultasaun médiku ba comunidade no halo vizita domisiliáriu. Durante semana tolu iha fulan Novembru nia laran, konsultasaun médiku atinji ona ema total 1,403. Husi total ne'e, iha ema nain 539 maka husi Dili serbisu hamutuk ho Servisu Saúde Munisípiu Dili. Alende halo

konsultasaun médiku ba comunidade sira, ekipa SABEH mós fó apoiu ba vasina COVID-19 no atinji ema 1,126 iha Lourba, munisípiu Bobonaro.

- OMS Timor-Leste hamutuk ho parseiru sira (Maluk Timor no Menzies School of Health Research) fó apoiu hodi halo Konferénsia Internasionál Sientífika Anuál ba Saúde (16 – 17 Novembru 2021) ne'ebé diskuti kona-ba jestaun kliníku, apoiu ba laboratóriu, epidemiolojia, tópiu saúde públiku inklui polítika pandemia COVID-19 no estratéjia, komunikasaun risku, prevensaun, kontrole, no teste laboratóriu no kuidadus kritíkus.

ATUALIZASAUN EPIDEMIOLOGIA

Kazu COVID-19 kumulativu no kazu foun

Distribusaun kazu foun ne'ebé relata, kazu rekuperadu no kazu ativu tuir munisípiu, to'o loron 23 November 2021

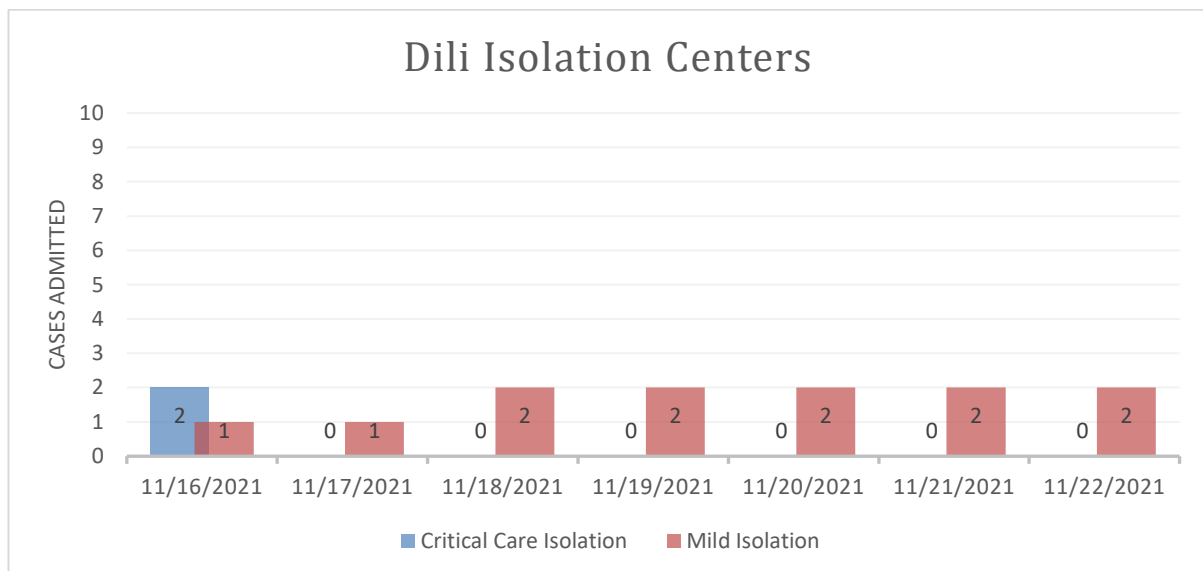
Munisípiu	Kazu foun (17 – 23 Nov. 2021)	Loron 7 - mudansa % (case)*	Kazu kumulativu	Kazu rekuperadu (17 – 23 Nov. 2021)	Kazu rekuperadu kumulativu	Kazu óbitu foun (17 - 23 Nov. 2021)	Kazu óbitu kumulativu	Kazu ativu (23 Nov. 2021)
Aileu	0	0	126	0	125	0	1	0
Ainaro	0	0	227	0	224	0	3	0
Baucau	0	-200	1540	2	1533	0	7	0
Bobonaro	2	100	605	3	596	0	9	0
Covalima	1	100	788	1	785	0	3	0
Dili	5	0	13733	3	13645	0	81	7
Ermera	0	0	1113	0	1111	0	2	0
Lautem	0	0	183	0	178	0	5	0
Liquica	0	0	125	0	124	0	1	0
Manatuto	0	0	203	0	201	0	2	0
Manufahi	0	0	265	0	265	0	0	0
RAEOA	0	0	393	0	390	0	3	0
Viqueque	0	0	519	0	514	0	5	0
TOTAL	8	0	19820	9	19691	0	122	7

*Mudansa kazu COVID-19 kompara ho loron 7 ikus

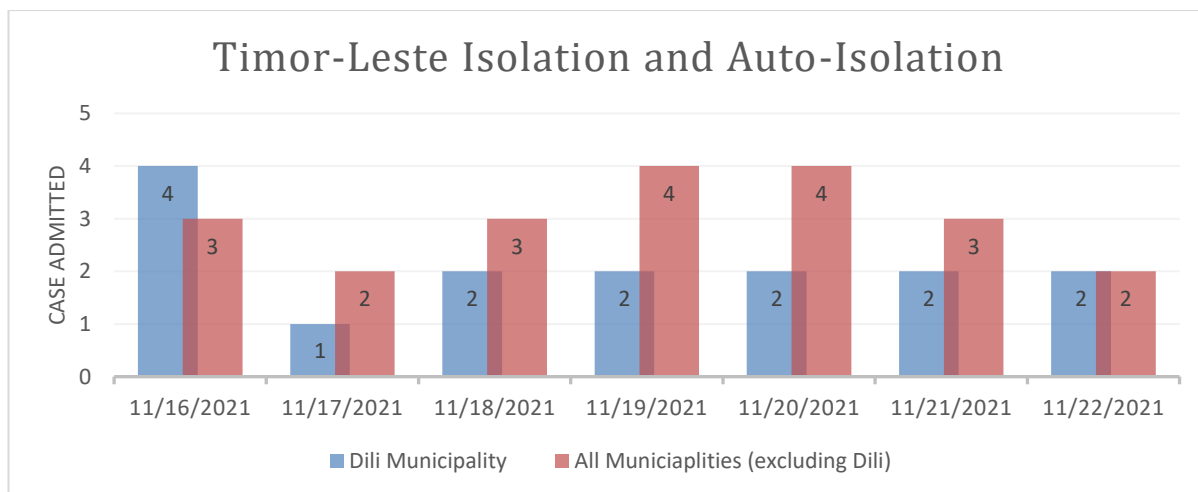
- Iha kazu 8 ne'ebé relata iha periodu relatóriu (17-23 Novembru). Númeru kazu foun sira ne'e hanesan kompara ho periodu relatóriu ikus (10-16 Novembru). Kazu insidénsia hirak ne'e relata husi munisípiu Dili, Bobonaro no Covalima.

- Laiha kazu óbitu ida maka relata iha Timor-Leste durante periodu relatóriu ida ne'e, ida ne'e hanesan semana datoluk laiha kazu óbitu.
- Númeru kazu ativu agora tuun ba kazu 7.
- **Teste diáriu, taxa pozitivu no taxa teste positividade**
 - Durante data relatóriu atuál ida ne'e husi loron 17-23 Novembru, halo ona teste ba amostra 1,262 kompara ho teste amostra ne'ebé halo liu ona hamutuk 1,118 iha loron 7 liubá.
 - Taxa teste positividade husi relatóriu ida ne'e ho médiu 0.6%, taxa positividade aumenta 11% kompara ho periodu relatóriu semana kotuk.

JESTAUN KAZU COVID-19



Númeru paciente tama izolamentu hahú menus iha fulan Novembru nia laran. Númeru paciente ne'ebé baixa iha sentru izolamentu krítiku (Lahane no Vera Cruz) mós kontinua menus no paciente baixa iha entre ema nain 0-2. Dezde fulan Agostu remata, persentajen baixa komesa tuun ba 99.9% iha sentru izolamentu iha Dili.



Gráfiku iha leten ne'e hatudu númeru pasiente ne'ebé tama baixa iha sentru izolamentu ho halo auto-izolamentu (iha uma) iha munisípiu 12 kompara ho Dili. Iha Timor-Leste tomak pasiente ne'ebé tama baixu iha sentru izolamentu komesa tun ona

IMUNIZASAUN COVID-19

Iha periodu relatóriu ida ne'e (23 Novembru 2021 dadeer), total doze vasina COVID-19 ne'ebé administra 1,061,523 kompostu husi doze dahuluk 634,575 (kobertura 79.7% entre populasaun idade 18 no liu no 18.4% entre populasaun idade 12 to'o <18) no doze daruak 427,083, (kobertura 55.7% entre populasaun idade 18 no liu) maka administra ona iha territóriu tomak iha Timor-Leste. Detallu husi número doze vasina ne'ebé administra ona no kobertura tuir produktu vasina no doze vasina nian bele refere ba Tabela 1.

Tabela 1: Número doze vasina COVID-19 ne'ebé administra ona no kobertura iha Dili no Timor-Leste tuir vasina nia marka no doze sira, atualizada to'o 10:00hrs 23/11/2021

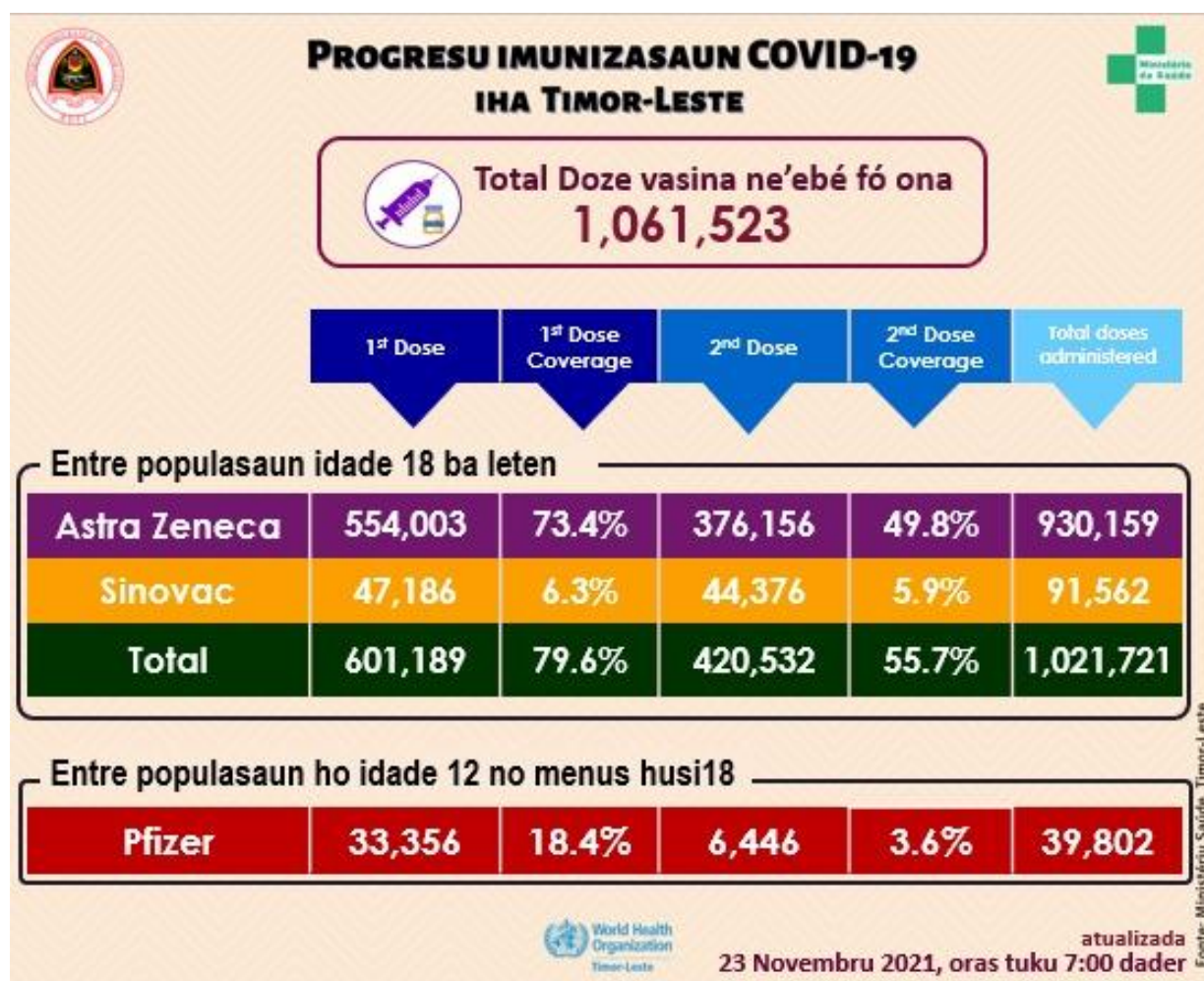


Figura 1: Kobertura vasina COVID-19 tuir munisípiu iha Timor-Leste atualizada 10:00 hrs 23/11/2021

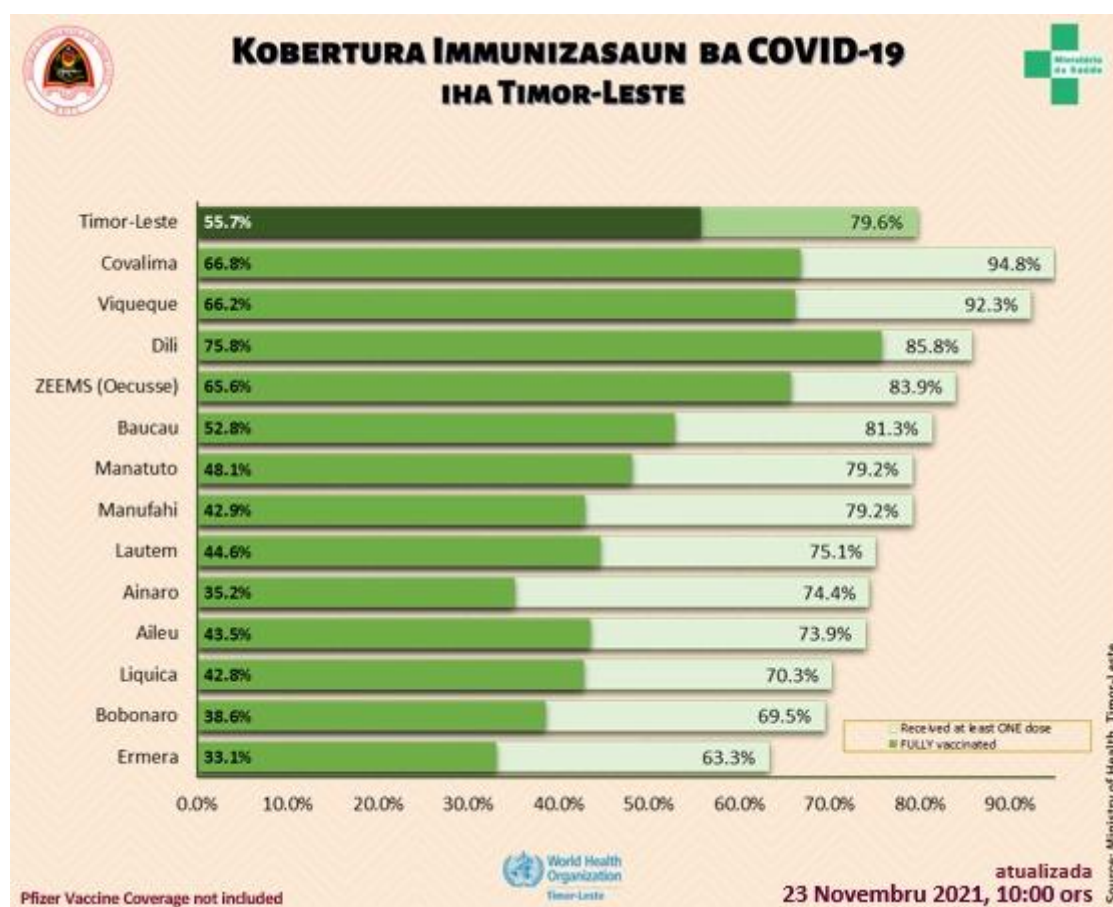


Tabela 2: Númeru ema sira ne'ebé simu vasina ho produktu vasina hotu (AstraZeneca, Sinovac, no Pfizer) no EADI tuir sexu iha kada munisípiu iha Timor-Leste, atualizada to'o 10:00 hrs 23/11/2021

Municipality	Number Vaccinated						AEFI		
	First Dose			Second Dose			Male	Female	Total
	Male	Female	Total	Male	Female	Total			
Dili	117,645	99,155	216,800	92,792	75,729	168,521	13	25	38
Aileu	12,041	11,054	23,095	7,451	6,150	13,601	1	1	2
Ainaro	13,443	12,682	26,125	6,768	5,584	12,352	0	0	0
Baucau	29,772	29,867	59,639	20,690	18,050	38,740	0	0	0
Bobonaro	20,222	19,198	39,420	12,065	9,810	21,875	4	6	10
Covalima	19,079	19,061	38,140	13,984	12,869	26,853	7	6	13
Ermera	25,176	22,381	47,557	14,058	10,782	24,840	0	0	0
Lautem	13,244	14,103	27,347	8,185	8,068	16,253	2	0	2
Liquica	16,061	15,692	31,753	10,218	9,100	19,318	0	1	1
Manatuto	11,725	10,771	22,496	7,407	6,266	13,673	2	0	2
Manufahi	13,756	12,656	26,412	7,997	6,326	14,323	1	2	3
Viqueque	19,836	20,721	40,557	14,576	14,522	29,098	6	0	6
ZEEMS (Oecusse)	17,257	17,947	35,204	13,759	13,772	27,531	0	0	0
Total (without Dili)	211,612	206,133	417,745	137,158	121,299	258,457	23	16	39
Total (Timor-Leste)	329,257	305,288	634,545	229,950	197,028	426,978	36	41	77

Figura 2: Progresu semanal imunizasaun COVID-19 iha Timor-Leste atualizada to'o 10:00 hrs 21/11/2021

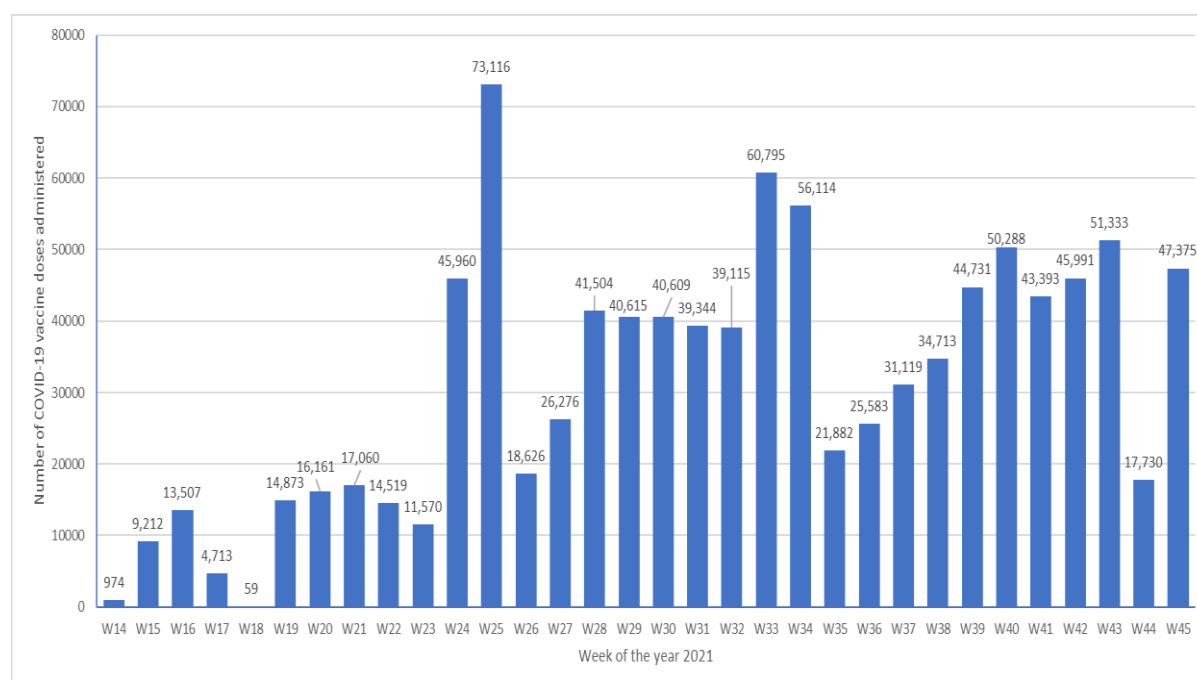


Tabela 3: Númeru populasaun idade 12 to'o <18 no liu* ne'ebé simu vasina Pfizer no kobertura tuir munisípiu iha Timor-Leste, atualizada to'o 10:00 hrs 23/11/2021

Municipality	12to <18y Population	First Dose				Second Dose			
		12 to <18y Students	12 to <18y Non-students	Total	Coverage	12 to <18y Students	12 to <18y Non-students	Total	Coverage
Dili	41,822	33,349	7	33,356	79.8%	6,446	-	6,446	15.4%
Aileu	7,770	-	-	-	0.0%	-	-	-	0.0%
Ainaro	10,253	-	-	-	0.0%	-	-	-	0.0%
Baucau	18,189	-	-	-	0.0%	-	-	-	0.0%
Bobonaro	14,466	-	-	-	0.0%	-	-	-	0.0%
Covalima	9,729	-	-	-	0.0%	-	-	-	0.0%
Ermera	20,564	-	-	-	0.0%	-	-	-	0.0%
Lautem	10,447	-	-	-	0.0%	-	-	-	0.0%
Liquica	11,137	-	-	-	0.0%	-	-	-	0.0%
Manatuto	7,108	-	-	-	0.0%	-	-	-	0.0%
Manufahi	8,267	-	-	-	0.0%	-	-	-	0.0%
Viqueque	11,490	-	-	-	0.0%	-	-	-	0.0%
ZEEMS (Oecusse)	10,565	-	-	-	0.0%	-	-	-	0.0%
Total (without Dili)	139,985	-	-	-	0.0%	-	-	-	0.0%
Total (Timor-Leste)	181,807	33,349	7	33,356	18.3%	6,446	-	6,446	3.5%

*Based on 2021 population projections

Tabela 3: Númeru ema individuu entre populasaun elijivel sira (tinan 18 no liu*) ne'ebé vasinadu ona ho vasina COVID-19 AstraZeneca no Sinovac iha Timor-Leste no kobertura atualizada to'o 10:00hrs 23/11/2021

Municipality	Eligible Population			Number vaccinated & Coverage											
	High Risk Groups (20% Pop.)	18-59y no comorbidity (80% Pop.)	Total	First Dose						Second Dose					
				High Risk Groups (20% Pop.)	Coverage	18-59y no comorbidity (80% Pop.)	Coverage	Total	Coverage	High Risk Groups (20% Pop.)	Coverage	18-59y no comorbidity (80% Pop.)	Coverage	Total	Coverage
Dili	29,980	183,822	213,802	53,178	177.4%	130,266	70.9%	183,444	85.8%	33,358	111.3%	128,717	70.0%	162,075	75.8%
Aileu	6,292	24,943	31,235	11,561	183.7%	11,534	46.2%	23,095	73.9%	6,893	109.6%	6,708	26.9%	13601	43.5%
Ainaro	7,410	27,726	35,136	6,252	84.4%	19,873	71.7%	26,125	74.4%	3,101	41.8%	9,251	33.4%	12352	35.2%
Baucau	18,141	55,175	73,316	16,990	93.7%	42,649	77.3%	59,639	81.3%	10,184	56.1%	28,556	51.8%	38740	52.8%
Bobonaro	13,268	43,476	56,744	10,338	77.9%	29,082	66.9%	39,420	69.5%	5,992	45.2%	15,883	36.5%	21875	38.6%
Covalima	8,725	31,503	40,228	9,978	114.4%	28,162	89.4%	38,140	94.8%	6,592	75.6%	20,261	64.3%	26853	66.8%
Ermera	14,350	60,793	75,143	10,223	71.2%	37,334	61.4%	47,557	63.3%	4,417	30.8%	20,423	33.6%	24840	33.1%
Lautem	8,455	27,963	36,418	8,068	95.4%	19,279	68.9%	27,347	75.1%	5,024	59.4%	11,229	40.2%	16253	44.6%
Liquica	9,588	35,597	45,185	8,163	85.1%	23,590	66.3%	31,753	70.3%	4,540	47.4%	14,778	41.5%	19318	42.8%
Manatuto	6,701	21,718	28,419	6,463	96.4%	16,033	73.8%	22,496	79.2%	3,520	52.5%	10,153	46.8%	13673	48.1%
Manufahi	7,595	25,766	33,361	9,077	119.5%	17,335	67.3%	26,412	79.2%	6,206	81.7%	8,117	31.5%	14323	42.9%
Viqueque	11,034	32,905	43,939	12,292	111.4%	28,265	85.9%	40,557	92.3%	8,677	78.6%	20,421	62.1%	29098	66.2%
ZEEMS (Oecusse)	9,408	32,534	41,942	11,477	122.0%	23,727	72.9%	35,204	83.9%	7,600	80.8%	19,931	61.3%	27,531	65.6%
Total (without Dili)	120,967	420,098	541,065	120,882	99.9%	296,863	70.7%	417,745	77.2%	72,746	60.1%	185,711	44.2%	258,457	47.8%
Total (Timor-Leste)	150,947	603,920	754,867	174,060	115.3%	427,129	70.73%	601,189	79.6%	106,104	70.3%	314,428	52.1%	420,532	55.7%

*Based on 2021 population projections. Population with Comorbidity 12.5% among 30-59y based on 2016 DHS data

High Risk Groups (20% of the popylation) - Healthcare staff, other front line staff, aged 60y and above, and 18-59y with comorbidity

18-59y with no comorbidity (80% of the population)

Tabela 4: Kobertura vasina COVID-19 entre TOTAL POPULASAUN tuir munisípiu, atualizada to'ó oras 10:00 23/11/2021

Municipality	Eligible Population			Number vaccinated & Coverage											
	High Risk Groups (20% Pop.)	18-59y no comorbidity (80% Pop.)	Total	First Dose						Second Dose					
				High Risk Groups (20% Pop.)	Coverage	18-59y no comorbidity (80% Pop.)	Coverage	Total	Coverage	High Risk Groups (20% Pop.)	Coverage	18-59y no comorbidity (80% Pop.)	Coverage	Total	Coverage
Dili	29,980	183,822	213,802	53,178	177.4%	130,266	70.9%	183,444	85.8%	33,358	111.3%	128,717	70.0%	162,075	75.8%
Aileu	6,292	24,943	31,235	11,561	183.7%	11,534	46.2%	23,095	73.9%	6,893	109.6%	6,708	26.9%	13601	43.5%
Ainaro	7,410	27,726	35,136	6,252	84.4%	19,873	71.7%	26,125	74.4%	3,101	41.8%	9,251	33.4%	12352	35.2%
Baucau	18,141	55,175	73,316	16,990	93.7%	42,649	77.3%	59,639	81.3%	10,184	56.1%	28,556	51.8%	38740	52.8%
Bobonaro	13,268	43,476	56,744	10,338	77.9%	29,082	66.9%	39,420	69.5%	5,992	45.2%	15,883	36.5%	21875	38.6%
Covalima	8,725	31,503	40,228	9,978	114.4%	28,162	89.4%	38,140	94.8%	6,592	75.6%	20,261	64.3%	26853	66.8%
Ermera	14,350	60,793	75,143	10,223	71.2%	37,334	61.4%	47,557	63.3%	4,417	30.8%	20,423	33.6%	24840	33.1%
Lautem	8,455	27,963	36,418	8,068	95.4%	19,279	68.9%	27,347	75.1%	5,024	59.4%	11,229	40.2%	16253	44.6%
Liquica	9,588	35,597	45,185	8,163	85.1%	23,590	66.3%	31,753	70.3%	4,540	47.4%	14,778	41.5%	19318	42.8%
Manatuto	6,701	21,718	28,419	6,463	96.4%	16,033	73.8%	22,496	79.2%	3,520	52.5%	10,153	46.8%	13673	48.1%
Manufahi	7,595	25,766	33,361	9,077	119.5%	17,335	67.3%	26,412	79.2%	6,206	81.7%	8,117	31.5%	14323	42.9%
Viqueque	11,034	32,905	43,939	12,292	111.4%	28,265	85.9%	40,557	92.3%	8,677	78.6%	20,421	62.1%	29098	66.2%
ZEEMS (Oecusse)	9,408	32,534	41,942	11,477	122.0%	23,727	72.9%	35,204	83.9%	7,600	80.8%	19,931	61.3%	27,531	65.6%
Total (without Dili)	120,967	420,098	541,065	120,882	99.9%	296,863	70.7%	417,745	77.2%	72,746	60.1%	185,711	44.2%	258,457	47.8%
Total (Timor-Leste)	150,947	603,920	754,867	174,060	115.3%	427,129	70.73%	601,189	79.6%	106,104	70.3%	314,428	52.1%	420,532	55.7%

*Based on 2021 population projections. Population with Comorbidity 12.5% among 30-59y based on 2016 DHS data
 High Risk Groups (20% of the population) - Healthcare staff, other front line staff, aged 60y and above, and 18-59y with comorbidity
 18-59y with no comorbidity (80% of the population)

Tabela 5: Númeru individuu sira ne'ebé ATU SIMU VASINA tuir munisípiu, atualizada to'ó oras 10:00 16/11/2021

Municipality	Total Population *	Number TO BE VACCINATED and Percentage			
		First Dose		Second Dose	
		Number to be Vaccinated	Percentage	Number to be Vaccinated	Percentage
Dili	352,553	135,753	38.5%	184,032	52.2%
Aileu	56,242	33,147	58.9%	42,641	75.8%
Ainaro	65,509	39,384	60.1%	53,157	81.1%
Baucau	126,996	67,357	53.0%	88,256	69.5%
Bobonaro	99,932	60,512	60.6%	78,057	78.1%
Covalima	70,194	32,054	45.7%	43,341	61.7%
Ermera	139,692	92,135	66.0%	114,852	82.2%
Lautem	66,938	39,591	59.1%	50,685	75.7%
Liquica	81,293	49,540	60.9%	61,975	76.2%
Manatuto	49,417	26,921	54.5%	35,744	72.3%
Manufahi	57,831	31,419	54.3%	43,508	75.2%
Viqueque	72,042	31,485	43.7%	42,944	59.6%
ZEEMS (Oecusse)	79,141	43,937	55.5%	51,610	65.2%
Total (without Dili)	965,227	547,482	56.7%	706,770	73.2%
Total (Timor-Leste)	1,317,780	683,235	51.8%	890,802	67.6%

*Based on 2021 population projections

ANALIZE SITUASAUN

- Nivel transmisaun kontinua ki'ik iha territóriu tomak, tuir evidénsia ne'ebé rejista insedénsia kazu uitoan, taxa teste positividade ne'ebé ki'ik no laiha kazu óbitu. (ba periodu relatóriu datoluk).
- Estadu Emerjénsia karik bele estende liu husi data determina ona tuir reportajen notísia nian. Maibé, dekretu lei governu nian atu forsa kumpri tuir medida saúde pública nian durante emerjénsia saúde pública ne'ebé pasa tiha ona, no sei implementa. Ida ne'e sei garantia implementasaun medida sira ba kuarentena no mós vijilánsia nian. Ita sei haree movimentu ema sei aumenta, enkuantu uza máskara no fase liman kontinua tuun.
- Populasaun nia movimentu se'i sa'e, mezmua uza ba máskara no fase-liman tuun. Públiku tenke kontinua atu halo tuir nafatin protokolu saúde sira hanesan parte ida husi *"normal foun"* no tenki simu vasinasaun bainhira sidauk simu. Iha tempu hanesan, polítika no prosedimentu sira tenki atualiza bainhira tama territóriu, teste, kuarentena, no izolamentu atu akomoda ba dezvoltamentu foun sira.
- Keta haluha: Pandemia ne'e sidauk remata, kazu sira sei sa'e nafatin iha parte balun iha mundu. Ita prezisa matan-moris nafatin!

REKURSU NE'EBÉ DISPONIVEL

- [Ba públiku jerál no profesionál saúde sira kona-ba prevensaun, tratamentu, no vasina, nsst.](#)
- [Rekomendasaun OMS ba Desizaun Relasiona ho COVID-19](#)
- Kursu gratuita iha Tetum – [OpenWHO.org](#)

KONTAKTU MÉDIA NO INFORMASAUN KONA-BA COVID-19

- Ministériu Saúde estabelese ona número *hotline* – 119 – ba COVID-19 ne'ebé maka ema hotu-hotu bele kontaktu hodi hetan informasaun relasiona ho COVID-19
- Alende ne'e, [Pájjina Facebook MS](#) nian fornese atualizasaun loloos kona-ba dezvoltamentu COVID-19 iha rai laran
- OMS Timor-Leste liuhusi nia [Pájjina Facebook](#) no [Twitter](#) mós disemina informasaun kona-ba medida preventiva, pergunta no resposta, *myth-buster* no atualizasaun ikus kona-ba COVID-19 iha mundu tomak no iha rai laran. Ba media no pedidu ba entrevista bele manda ba hasane@who.int ka wcotimorleste@who.int