

# Coronavirus Disease 2019 (COVID-19)

Situation Report – 129

## Timor-Leste



World Health  
Organization

Timor-Leste

\*Data as reported on 07 December 2021

### SITUATION IN NUMBERS

#### TIMOR-LESTE



Cumulative  
**19829 (6)**



Recovered (new)  
**19702 (5)**



Active cases  
**5**



Deaths (new)  
**122 (0)**

#### VACCINATION STATUS



1<sup>st</sup> dose  
Coverage - **81.9%**



2<sup>nd</sup> dose  
Coverage - **61.9%**

\*As per data released by the [Ministry of Health](#)

#### GLOBAL



Cases  
**265,713,467**



Deaths  
**5,260,888**

#### VACCINATION



**7,952,750,402** doses

### HIGHLIGHTS

- Since the last edition of the weekly situation report, the Ministry of Health (MoH) reported **6** new cases of COVID-19, **5** recoveries and **0** deaths. The number of new cases and deaths has been remaining low.
- The Ministry of Health, in collaboration with Instituto Nacional de Saúde, WHO Timor-Leste and Unicef Timor-Leste conducted 2 days Training of Trainers for 12 municipalities health professionals team, ahead of the Pfizer vaccine roll out in 12 municipalities. More than 80 health professionals consisted of medical doctors, nurses, midwives, EPI focal points, UNICEF team, and the WHO team participated in this training. The vaccination campaign for the 12 to under 18 age group in the 12 municipalities is planned to start early next year.
- To scale up the COVID-19 vaccination coverage in the country, WHO team is on the ground supporting the vaccination teams in all the municipalities.
- With support from WHO, the IHR (International Health Regulation) National Focal Point convened a two-day meeting of multi-sectoral government focal persons for reviewing the work over the past year and conducted a refresher training on IHR implementation.

Participants are from the Ministry of Interior (border control), Ministry of Agriculture and Fishery (quarantine), customs, AIFAESA.IP, and port health (airport, seaport and land crossings).

- To ensure quality data for better decision making, WHO in collaboration with Maternal and Child Health department, Ministry of Health and other partners facilitated and monitored the 2-days orientation on Maternal and Perinatal Death Surveillance and Response (MPDSR) for health worker and municipality health services team in Ermera.

## EPIDEMIOLOGICAL UPDATES

### 1. Distribution of cases and deaths by municipalities

Distribution of newly reported, recovered, and active cases by municipalities, as of 07 December 2021)

Municipality	New case (1–7 Dec. 2021)	Last 7-day % change (case)*	Cumulative case	New recovered (1-7 Dec. 2021)	Cumulative recovered	New death (1 - 7 Dec. 2021)	Cumulative death	Active Cases (7 Dec. 2021)
Aileu	0	0	126	0	125	0	1	0
Ainaro	0	0	227	0	224	0	3	0
Baucau	0	100	1541	0	1533	0	7	1
Bobonaro	1	0	607	1	597	0	9	1
Covalima	2	100	790	2	787	0	3	0
Dili	3	200	13737	2	13653	0	81	3
Ermera	0	0	1113	0	1111	0	2	0
Lautem	0	0	183	0	178	0	5	0
Liquica	0	0	125	0	124	0	1	0
Manatuto	0	0	203	0	201	0	2	0
Manufahi	0	0	265	0	265	0	0	0
RAEOA	0	0	393	0	390	0	3	0
Viqueque	0	0	519	0	514	0	5	0
<b>TOTAL</b>	<b>6</b>	<b>100</b>	<b>19829</b>	<b>5</b>	<b>19702</b>	<b>0</b>	<b>122</b>	<b>5</b>

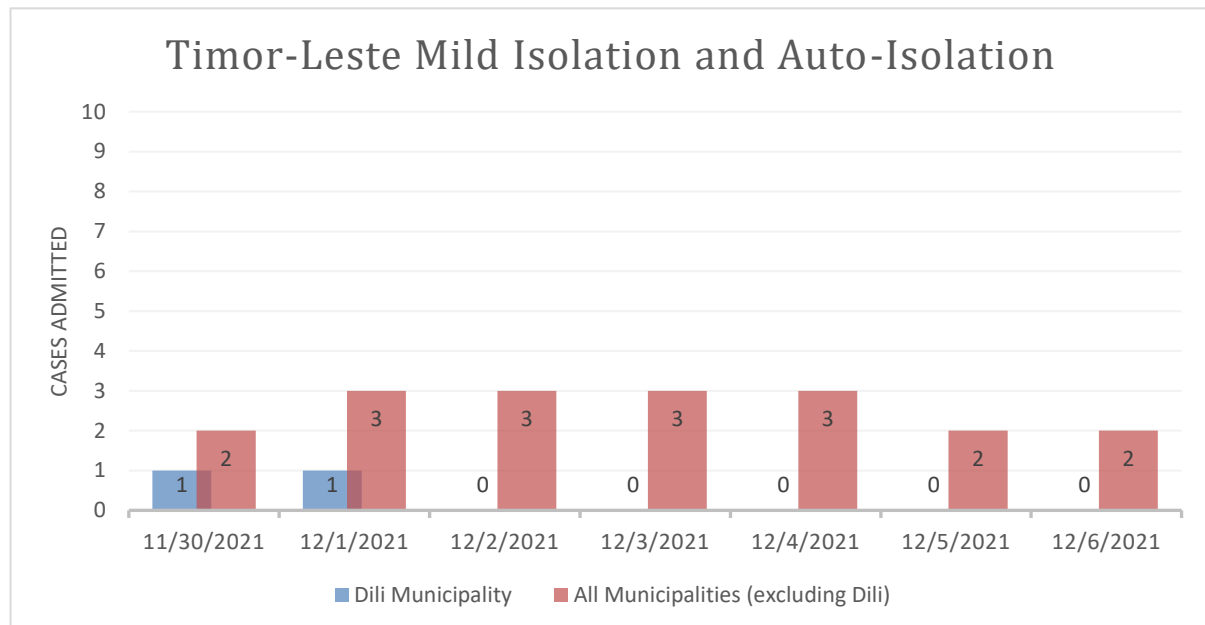
\*Change in new COVID-19 cases as compared with the previous 7 days

- Six new cases are reported during the current reporting period (1-7 Dec. 2021), which has been increased from 3 cases reported during the previous reporting period (24 - 30 Nov. 2021). Incident cases are reported from Dili, Baucau and Covalima municipalities.
- No death has been reported from Timor-Leste during this reporting period, which is the fifth consecutive reporting period with no death reported.

- The number of active cases has been 4 as of 7 Dec. 2021.
- **Number of test and test positivity rates**
  - During the current reporting period from 1 to 7 December, 1,387 tests were conducted, as compared to 1,558 tests in the previous 7 days.
  - The test positive rates of this reporting period averaged to 0.4%, as compared with 0.2% of the previous reporting period.

## CASE MANAGEMENT

The isolation centre admissions in Dili continued to decrease steadily throughout November and December 2021. The numbers admitted to critical care isolation centres (Lahane and Vera Cruz) has been zero since 16 November 2021. Isolation for mild cases is noted in the chart, which shows the total number of people admitted to isolation centres and auto-isolation (at home) in 12 municipalities compared to Dili. Throughout Timor-Leste, number of cases on isolation has been steadily decreased.



## VACCINATION

At the time of writing this report (07/12/2021 morning), in total, 1,140,717 COVID-19 vaccine doses comprising 652,146 first doses (coverage 81.9% among population aged 18 years and above and 18.8% among the population aged 12 years to <18 years) and 488,571 second doses (coverage 61.9% among population aged 18 years and above and 11.9% among the population aged 12 years to <18 years) were administered in Timor-Leste. The breakdown of the number of doses administered and coverage by vaccine product and vaccine dose is illustrated in Table 1.

**Table 1: Number of COVID-19 vaccine doses administered and coverage in Dili and Timor-Leste by vaccine brand and doses as of 10:00hrs 07/12/2021**

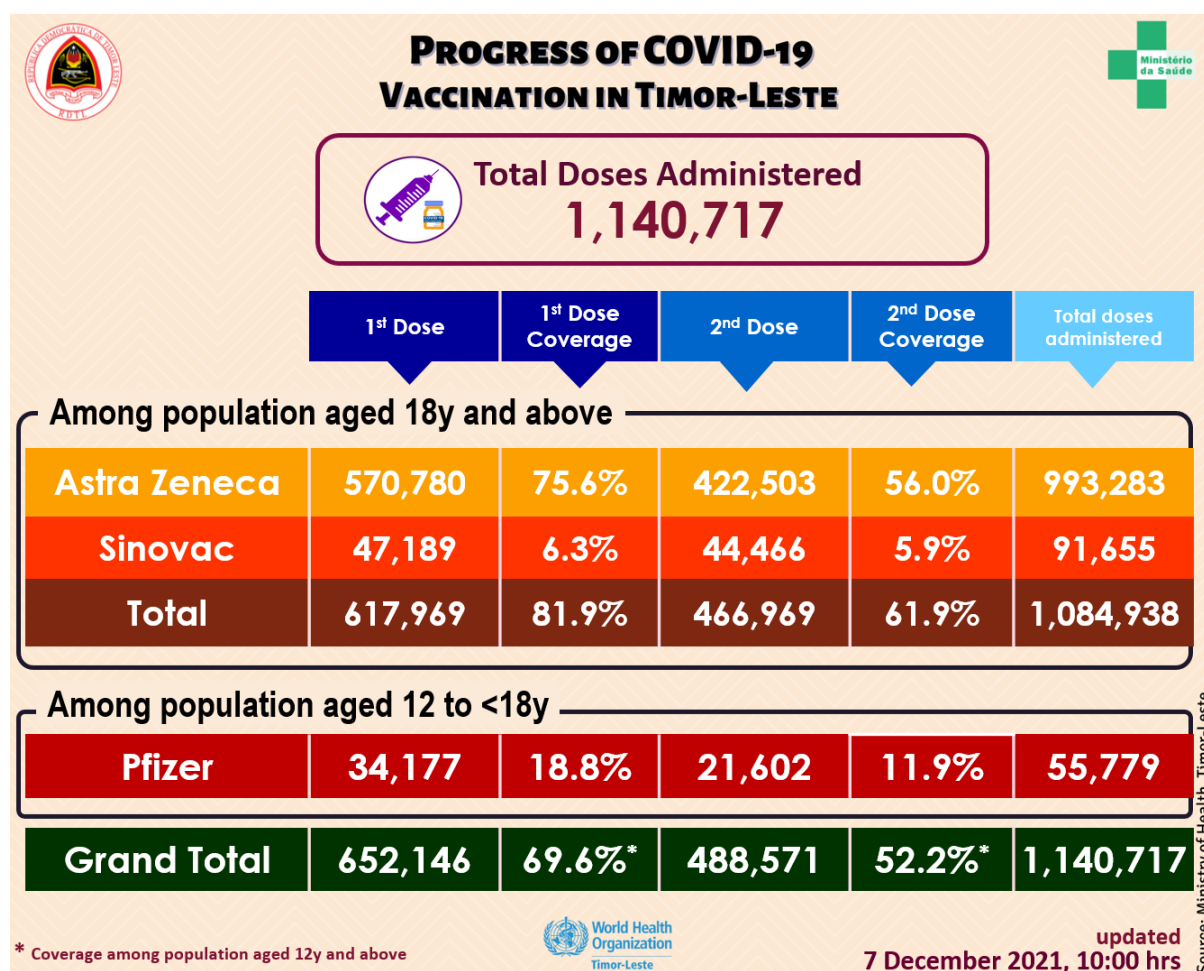


Figure 1: Coverage of COVID-19 vaccination by municipality in Timor-Leste as of 10:00hrs 07/12/2021

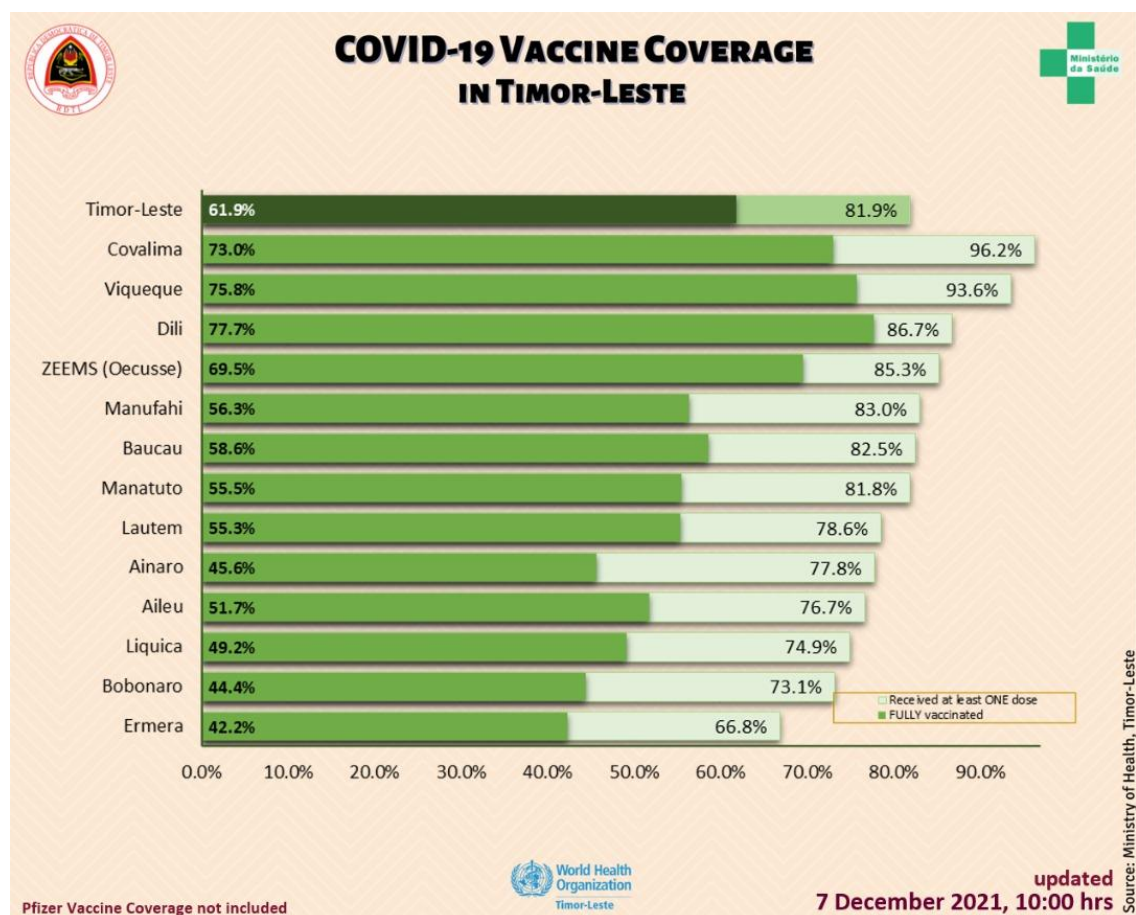
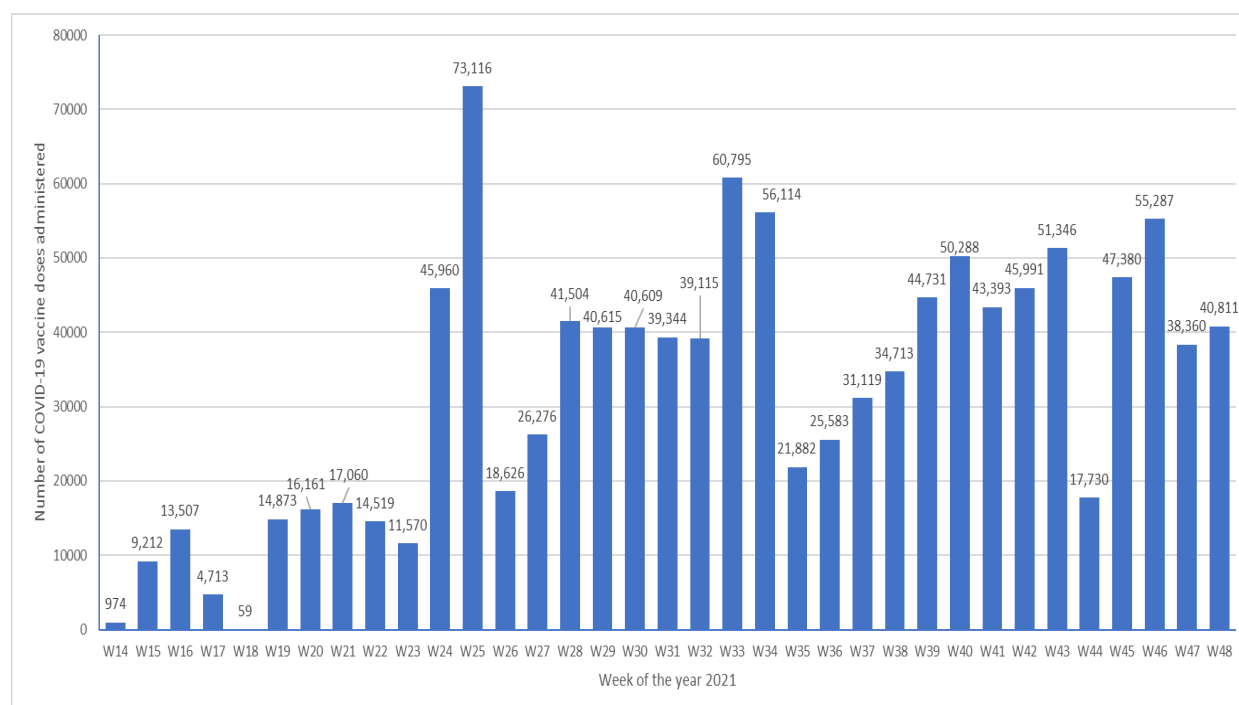


Table 2: Total number of individuals vaccinated with all the vaccine products (AstraZeneca, Sinovac, and Pfizer) and AEFI by sex by district in Timor-Leste as of 10:00 hrs 07/12/2021

Municipality	Number Vaccinated						AEFI		
	First Dose			Second Dose			Male	Female	Total
	Male	Female	Total	Male	Female	Total			
Dili	118,951	100,687	219,638	101,525	86,238	187,763	14	26	40
Aileu	12,397	11,545	23,942	8,551	7,613	16,164	1	1	2
Ainaro	13,985	13,352	27,337	8,379	7,647	16,026	0	0	0
Baucau	30,138	30,372	60,510	22,391	20,560	42,951	0	0	0
Bobonaro	21,108	20,390	41,498	13,422	11,763	25,185	4	6	10
Covalima	19,287	19,429	38,716	14,938	14,436	29,374	7	6	13
Ermera	26,284	23,916	50,200	17,035	14,705	31,740	0	0	0
Lautem	13,739	14,875	28,614	9,654	10,485	20,139	2	0	2
Liquica	16,928	16,927	33,855	11,551	10,673	22,224	0	1	1
Manatuto	12,026	11,225	23,251	8,322	7,458	15,780	2	0	2
Manufahi	14,290	13,409	27,699	9,961	8,826	18,787	1	2	3
Viqueque	20,058	21,063	41,121	16,308	16,982	33,290	6	0	6
ZEEMS (Oecusse)	17,425	18,340	35,765	14,374	14,774	29,148	0	0	0
<b>Total (without Dili)</b>	<b>217,665</b>	<b>214,843</b>	<b>432,508</b>	<b>154,886</b>	<b>145,922</b>	<b>300,808</b>	<b>23</b>	<b>16</b>	<b>39</b>
<b>Total (Timor-Leste)</b>	<b>336,616</b>	<b>315,530</b>	<b>652,146</b>	<b>256,411</b>	<b>232,160</b>	<b>488,571</b>	<b>37</b>	<b>42</b>	<b>79</b>



**Figure 2: Weekly progress of vaccination in Timor-Leste during as of 10:00 hrs 05/12/2021**



**Table 3. Number of individuals among population aged 12 years to <18 years and above\* vaccinated with Pfizer vaccine and coverage by district in Timor-Leste as of 10:00hrs 07/12/2021**

Municipality	12to <18y Population	First Dose				Second Dose			
		12 to <18y Students	12 to <18y Non-students	Total	Coverage	12 to <18y Students	12 to <18y Non-students	Total	Coverage
Dili	41,822	34,163	14	34,177	81.7%	21,598	4	21,602	51.7%
Aileu	7,770	-	-	-	0.0%	-	-	-	0.0%
Ainaro	10,253	-	-	-	0.0%	-	-	-	0.0%
Baucau	18,189	-	-	-	0.0%	-	-	-	0.0%
Bobonaro	14,466	-	-	-	0.0%	-	-	-	0.0%
Covalima	9,729	-	-	-	0.0%	-	-	-	0.0%
Ermera	20,564	-	-	-	0.0%	-	-	-	0.0%
Lautem	10,447	-	-	-	0.0%	-	-	-	0.0%
Liquica	11,137	-	-	-	0.0%	-	-	-	0.0%
Manatuto	7,108	-	-	-	0.0%	-	-	-	0.0%
Manufahi	8,267	-	-	-	0.0%	-	-	-	0.0%
Viqueque	11,490	-	-	-	0.0%	-	-	-	0.0%
ZEEMS (Oecusse)	10,565	-	-	-	0.0%	-	-	-	0.0%
Total (without Dili)	139,985	-	-	-	0.0%	-	-	-	0.0%
<b>Total (Timor-Leste)</b>	<b>181,807</b>	<b>34,163</b>	<b>14</b>	<b>34,177</b>	<b>18.8%</b>	<b>21,598</b>	<b>4</b>	<b>21,602</b>	<b>11.9%</b>

\*Based on 2021 population projections

**Total Vaccinated (both doses) 55,779**

**Table 4. Number of individuals among eligible population (18 years and above\*) vaccinated with AstraZeneca and Sinovac in Timor-Leste with COVID-19 vaccine and coverage as of 10:00hrs 07/12/2021**

Municipality	Eligible Population			Number vaccinated & Coverage											
	High Risk Groups (20% Pop.)	18-59y no comorbidity (80% Pop.)	Total	First Dose						Second Dose					
				High Risk Groups (20% Pop.)	Coverage	18-59y no comorbidity (80% Pop.)	Coverage	Total	Coverage	High Risk Groups (20% Pop.)	Coverage	18-59y no comorbidity (80% Pop.)	Coverage	Total	Coverage
Dili	29,980	183,822	213,802	53,424	178.2%	132,037	71.8%	185,461	86.7%	33,619	112.1%	132,542	72.1%	166,161	77.7%
Aileu	6,292	24,943	31,235	12,093	192.2%	11,849	47.5%	23,942	76.7%	8,429	134.0%	7,735	31.0%	16164	51.7%
Ainaro	7,410	27,726	35,136	6,510	87.9%	20,827	75.1%	27,337	77.8%	3,831	51.7%	12,195	44.0%	16026	45.6%
Baucau	18,141	55,175	73,316	17,224	94.9%	43,286	78.5%	60,510	82.5%	11,154	61.5%	31,797	57.6%	42951	58.6%
Bobonaro	13,268	43,476	56,744	10,696	80.6%	30,802	70.8%	41,498	73.1%	6,575	49.6%	18,610	42.8%	25185	44.4%
Covalima	8,725	31,503	40,228	10,175	116.6%	28,541	90.6%	38,716	96.2%	7,056	80.9%	22,318	70.8%	29374	73.0%
Ermera	14,350	60,793	75,143	10,644	74.2%	39,556	65.1%	50,200	66.8%	5,433	37.9%	26,307	43.3%	31740	42.2%
Lautem	8,455	27,963	36,418	8,350	98.8%	20,264	72.5%	28,614	78.6%	5,952	70.4%	14,187	50.7%	20139	55.3%
Liquica	9,588	35,597	45,185	8,705	90.8%	25,150	70.7%	33,855	74.9%	5,210	54.3%	17,014	47.8%	22224	49.2%
Manatuto	6,701	21,718	28,419	6,672	99.6%	16,579	76.3%	23,251	81.8%	4,112	61.4%	11,668	53.7%	15780	55.5%
Manufahi	7,595	25,766	33,361	9,427	124.1%	18,272	70.9%	27,699	83.0%	7,691	101.3%	11,096	43.1%	18787	56.3%
Viqueque	11,034	32,905	43,939	12,439	112.7%	28,682	87.2%	41,121	93.6%	9,703	87.9%	23,587	71.7%	33290	75.8%
ZEEMS (Oecusse)	9,408	32,534	41,942	11,577	123.1%	24,188	74.3%	35,765	85.3%	7,881	83.8%	21,267	65.4%	29,148	69.5%
<b>Total (without Dili)</b>	<b>120,967</b>	<b>420,098</b>	<b>541,065</b>	<b>124,512</b>	<b>102.9%</b>	<b>307,996</b>	<b>73.3%</b>	<b>432,508</b>	<b>79.9%</b>	<b>83,027</b>	<b>68.6%</b>	<b>217,781</b>	<b>51.8%</b>	<b>300,808</b>	<b>55.6%</b>
<b>Total (Timor-Leste)</b>	<b>150,947</b>	<b>603,920</b>	<b>754,867</b>	<b>177,936</b>	<b>117.9%</b>	<b>440,033</b>	<b>72.86%</b>	<b>617,969</b>	<b>81.9%</b>	<b>116,646</b>	<b>77.3%</b>	<b>350,323</b>	<b>58.0%</b>	<b>466,969</b>	<b>61.9%</b>

\*Based on 2021 population projections. Population with Comorbidity 12.5% among 30-59y based on 2016 DHS data  
High Risk Groups (20% of the population) - Healthcare staff, other front line staff, aged 60y and above, and 18-59y with comorbidity  
18-59y with no comorbidity (80% of the population)

Table 5: COVID-19 Coverage among TOTAL POPULATION by District as of 10:00 hrs 07/12/2021

Municipality	Total Population *	Number Vaccinated & Coverage			
		First Dose		Second Dose	
		Number Vaccinated	Coverage	Number Vaccinated	Coverage
Dili	352,553	219,638	62.3%	187,763	53.3%
Aileu	56,242	23,942	42.6%	16,164	28.7%
Ainaro	65,509	27,337	41.7%	16,026	24.5%
Baucau	126,996	60,510	47.6%	42,951	33.8%
Bobonaro	99,932	41,498	41.5%	25,185	25.2%
Covalima	70,194	38,716	55.2%	29,374	41.8%
Ermera	139,692	50,200	35.9%	31,740	22.7%
Lautem	66,938	28,614	42.7%	20,139	30.1%
Liquica	81,293	33,855	41.6%	22,224	27.3%
Manatuto	49,417	23,251	47.1%	15,780	31.9%
Manufahi	57,831	27,699	47.9%	18,787	32.5%
Viqueque	72,042	41,121	57.1%	33,290	46.2%
ZEEMS (Oecusse)	79,141	35,765	45.2%	29,148	36.8%
<b>Total (without Dili)</b>	<b>965,227</b>	<b>432,508</b>	<b>44.8%</b>	<b>300,808</b>	<b>31.2%</b>
<b>Total (Timor-Leste)</b>	<b>1,317,780</b>	<b>652,146</b>	<b>49.5%</b>	<b>488,571</b>	<b>37.1%</b>

Table 6: Number of individuals TO BE VACCINATED by District as of 10:00 hrs 07/12/2021

Municipality	Total Population *	Number TO BE VACCINATED and Percentage			
		First Dose		Second Dose	
		Number to be Vaccinated	Percentage	Number to be Vaccinated	Percentage
Dili	352,553	132,915	37.7%	164,790	46.7%
Aileu	56,242	32,300	57.4%	40,078	71.3%
Ainaro	65,509	38,172	58.3%	49,483	75.5%
Baucau	126,996	66,486	52.4%	84,045	66.2%
Bobonaro	99,932	58,434	58.5%	74,747	74.8%
Covalima	70,194	31,478	44.8%	40,820	58.2%
Ermera	139,692	89,492	64.1%	107,952	77.3%
Lautem	66,938	38,324	57.3%	46,799	69.9%
Liquica	81,293	47,438	58.4%	59,069	72.7%
Manatuto	49,417	26,166	52.9%	33,637	68.1%
Manufahi	57,831	30,132	52.1%	39,044	67.5%
Viqueque	72,042	30,921	42.9%	38,752	53.8%
ZEEMS (Oecusse)	79,141	43,376	54.8%	49,993	63.2%
<b>Total (without Dili)</b>	<b>965,227</b>	<b>532,719</b>	<b>55.2%</b>	<b>664,419</b>	<b>68.8%</b>
<b>Total (Timor-Leste)</b>	<b>1,317,780</b>	<b>665,634</b>	<b>50.5%</b>	<b>829,209</b>	<b>62.9%</b>



## SITUATION ANALYSIS

- The transmission of COVID-19 remains at a low level in Timor-Leste, as evidenced by record low level of incident cases, test positivity rates and zero death (for fifth consecutive reporting periods).
- During the past several days, cases infected with Omicron variant have been reported from many countries of the world. Several countries in the region have also reported Omicron infected cases, including Thailand, Sri Lanka, India, Nepal and Maldives. The risk of Omicron cases spreading to Timor-Leste is very high.
- Currently there are more uncertainties than knowledge about the variant. At this stage, countries should be vigilant and take firm actions, including intensifying surveillance (including genome sequencing), testing and quarantine measures as per the national policies and guidelines. To the general public, we should still practice the public health and social measures, including the appropriate use of masks, hand hygiene, physical distancing and ventilations of rooms.
- We are quite confident that COVID-19 vaccines are effective against severe diseases, hospitalization and deaths arising from Omicron variant infections, as they do with the other variants of concern. Currently Timor-Leste has reached more than 80% for the first dose and 60% for both doses' vaccination coverages for the eligible adult population in Timor-Leste, which offer us a good level of protection against severe diseases and deaths. Effort continues to reach the remote villages and hard to reach populations until we reach a satisfactory level of vaccination.

## CURRENT CONCERN

### Update on Omicron variant

(28 November 2021)

- On 26 November 2021, WHO designated the variant B.1.1.529 a variant of concern, named Omicron, on the advice of WHO's [Technical Advisory Group on Virus Evolution](#) (TAG-VE). This decision was based on the evidence presented to the TAG-VE that Omicron has several mutations that may have an impact on how it behaves, for example, on how easily it spreads or the severity of illness it causes. Here is a summary of what is currently known.
- **Transmissibility:** It is not yet clear whether Omicron is more transmissible (e.g., more easily spread from person to person) compared to other variants, including Delta. The number of people testing positive has risen in areas of South Africa affected by this variant, but epidemiologic studies are underway to understand if it is because of Omicron or other factors.
- **Severity of disease:** It is not yet clear whether infection with Omicron causes more severe disease compared to infections with other variants, including Delta. Preliminary data suggests that there are increasing rates of hospitalization in South Africa, but this may be due

to increasing overall numbers of people becoming infected, rather than a result of specific infection with Omicron.

**Effectiveness of prior SARS-CoV-2 infection**

Preliminary evidence suggests there may be an increased risk of reinfection with Omicron (ie, people who have previously had COVID-19 could become reinfected more easily with Omicron), as compared to other variants of concern, but information is limited. More information on this will become available in the coming days and weeks.

**Effectiveness of vaccines:** WHO is working with technical partners to understand the potential impact of this variant on our existing countermeasures, including vaccines. Vaccines remain critical to reducing severe disease and death, including against the dominant circulating variant, Delta. Current vaccines remain effective against severe disease and death.

**Effectiveness of current tests:** The widely used PCR tests continue to detect infection, including infection with Omicron, as we have seen with other variants as well. Studies are ongoing to determine whether there is any impact on other types of tests, including rapid antigen detection tests.

**Effectiveness of current treatments:** Corticosteroids and IL6 Receptor Blockers will still be effective for managing patients with severe COVID-19. Other treatments will be assessed to see if they are still as effective given the changes to parts of the virus in the Omicron variant.

(Source: <https://www.who.int/news/item/28-11-2021-update-on-omicron>)

## AVAILABLE RESOURCES

- [For public and professionals on prevention, treatment, and vaccination etc.](#)
- [WHO Recommendations for COVID-19 Related Decisions](#)
- WHO Free Courses in Tetum – [OpenWHO.org](#)

## COVID-19 INFORMATION AND MEDIA QUERIES

- The MoH has established a hotline number – 119 – for COVID-19 on which people can call to get any COVID-19 related information.
- Additionally, [MoH Facebook page](#) provides timely updates on COVID-19 developments in the country.
- WHO Timor-Leste through its [Facebook page](#) and [Twitter handle](#) also disseminates information on preventive measures, questions and answers, myth-busters and latest updates on COVID-19 globally and nationally.
- For media queries and interviews requests can be sent to [hasane@who.int](mailto:hasane@who.int)