

Moras virus Corona 2019 (COVID-19)

Relatóriu Situasaun – 136

Timor-Leste



World Health
Organization

Timor-Leste

*Dadus relata to'o loron 25 Janeiru 2022

SITUASAUN IHA NÚMERU

TIMOR-LESTE



Kumulativu
19,871 (6)



Rekuperadu (foun)
19,739 (10)



Kazu ativu
10



Óbitu (foun)
122 (0)

GLÓBÁL



Kazu
349,641,119



Óbitu
5,592,266

PROGRESU IMUNIZASAUN COVID-19



Doze 1^a – **670,527**
Kobertura – **84.0%****



Doze 2^a – **561,208**
Kobertura – **70.4%****

* Bazeia ba dadus ne'ebé pública husi [Ministerio da Saúde](#)

** Ba populasaun adultu tinan 18 ba leten

PROGRESU IMUNIZASAUN COVID-19



Doze vasina
9,620,105,525

SUMÁRIU

- Dezde edisaun ikus relatóriu situasaun, Ministeriu Saúde relata hamutuk 6 kazu foun COVID-19, kazu rekuperadu **10** no kazu óbitu **0**. Número kazu foun COVID-19 no kazu óbitu kontinua iha número ki'ik.
- Iha loron 24 Janeiru 2022, Representasaun OMS nian ba Timor-Leste oficialmente entrega ona *Database* Vijilánsia no Monitorizasaun COVID-19 ba Ministériu Saúde. Durante serimónia *handover* ne'ebé hala'o iha Ministériu Saúde, Representante OMS, Dr. Arvind Mathur fo parabens ba Ministériu Saúde ba sira-nia lideransa no kapasidade técnica hodi kria no disemina *real-time* informasaun epidemiolójika kona-ba COVID-19 ba parte-interesada no parseiru oin-oin sira iha tinan rua-nia laran. OMS compromete ona atu apoia servisu vijilánsia no informasaun kontinualemente maske *database* ne'e entrega tiha ona ba Ministériu Saúde. DG, Dra. Odete expresa ninia gratidaun ba apoiu OMS nian ba desenvolvimentu vijilánsia no *database* sobre COVID-19, ne'ebé sai ona nu'udar suporte prinsipal ba responde COVID-19 iha rai laran.

- Hanesan parte ba apoiu tékniku ba Ministériu Saúde liu husi akizisaun ba suprimetus esensial sira hodi responde COVID-19 nian no nesesidade relasiona ho saúde sira seluk, UNDP kontinua fornese hela suprimetus médiku no medikamentus esensial sira. Iha 21 Janeiro 2022, remesa boot ida kontein kama ba pasiente sira to'o iha Dili no entrega ona ba SAMES. Remesa ne'e konsiste husi 90 kama pasiente multifunsaun elétriku ho kolxaun ba sala UTI, 75 kama pasiente manuál ho kolxaun (pediátriku) no 300 kama pasiente manuál (adultu). Kama pasiente adisionál sei bele atende ba pasiente barak liu iha tempu tuir mai bainhira presiza atendimentu ospitalar.
- UNICEF fornese assisténsia téknika ba Ministériu Saúde iha ezersísiu reflesaun kona-ba progresu no dezafiu no workshop priorizasaun ba atividade temátika ba servisu rotina iha 2022 no kontinua apoia Ministériu Saúde hodi renova no haforsa servisu saúde no nutrisaun rutina.
- UNICEF apoiu ona instalasaun konjelador temperatura ultra malirin hamutuk 12. Ho instalasaun konjelador temperature ultra malirin adisional ne'e, UNICEF kapasita SAMES hodi bele iha ULT hamutuk 16 ne'ebé totalmente fungsional hodi bele rai Pfizer 450,000 doze liu iha temperature ne'ebé nesesáriu. UNICEF mos fernese hela suporte tékniku ba SAMES hodi planu no instala jeradór *backup*, kuartu frigorífiku, dispozitivu hodi monitora temperatura, no konjeladór ho temperature ultra malirin rua iha kada armazein rejional.
- UNICEF no OMS apoiu ona Ministériu Saúde hodi realiza mikroplanu orsamentu iha nivél munisipál no nasionál ba implementasaun vasina COVID-19 sira hotu, inklui ba adulto, labarik no doze *booster*.
- UNICEF no OMS kontinua suporta mobilizasaun comunidade liu husi destaka pesoal tékniku iha minisípiu sira hotu hodi ajuda no aumenta konsientizasaun kona-ba prevensaun COVID-19, entendimentu vasina. Promosaun servisu saúde no nutrisaun rutina.
- UNICEF mós suporta hela responde ba denge no fornese ona Pedialyte (masin líkidu reidratasaun oral ba labarik) hamutuk botir 4,000 ba HNGV no ba Servisu Saúde Munisípiu Dili, ne'ebé uza ona hodi halo tratamentu ba labarik sira no seluk ne'ebé afetadu husi denge no diarrea. Suporta mos Ministériu Saúde hodi monitora labarik no inan sira ho denge ne'ebé admite iha Vera Cruz no facilidade saúde sira seluk, no ho apoiu husi OMS ba Ministériu Saúde iha konsientizasaun kona-ba prevensaun moras denge. Alein ida ne'e, UNICEF servisu ona ho MS hodi konsientiza no promove fo inan-nia susu ben eksklusivu ba bebé ho idade menus husi fulan 6, no komplementariu ba labarik sira idade to'o no liu.
- Enjeñeiru WASH sira husi UNICEF halo ona esbosu dahuluk ba alkanse servisu hodi atualiza WASH iha 14 CHC foun iha munisípiu 5 iha kontekstu prevensaun COVID-19 nian.

ATUALIZASAUN EPIDEMIOLOGIA

1. Kazu COVID-19 kumulativu no kazu foun

Distribusaun kazu foun ne'ebé relata, kazu rekuperadu no kazu ativu tuir munisípiu, to'o loron 25 Janeiro 2022

Munisípiu	Kazu foun (19-25 Jan. 2022)	Loron 7 - mudansa % (kazu)*	Kazu kumulativu	Kazu rekuperadu (19-25 Jan. 2022)	Kazu rekuperadu kumulativu	Kazu óbitu foun (19-25 Jan. 2022)	Kazu óbitu kumulativu	Kazu ativu (25 Jan. 2022)
Aileu	0	0	126	0	125	0	1	0
Ainaro	0	0	227	0	224	0	3	0
Baucau	0	0	1542	1	1535	0	7	0
Bobonaro	0	-100	614	1	605	0	9	0
Covalima	0	0	790	0	787	0	3	0
Dili	6	50	13770	8	13679	0	81	10
Ermera	0	0	1113	0	1111	0	2	0
Lautem	0	0	184	0	179	0	5	0
Liquica	0	0	125	0	124	0	1	0
Manatuto	0	0	203	0	201	0	2	0
Manufahi	0	0	265	0	265	0	0	0
RAEOA	0	0	393	0	390	0	3	0
Viqueque	0	0	519	0	514	0	5	0
TOTAL	6	20	19871	10	19739	0	122	10

*Mudansa kazu COVID-19 kompara ho loron 7 ikus

- Kazu foun hamutuk 6 ne'ebé relata iha periodu relatóriu (19-25 Jan. 2022), kompara ho kazu 5 ne'ebé relata iha periodu relatóriu ikus (12-18 Jan. 2021) ho aumenta 20%. Kazu nain-6 relata husi munisípiu Dili.
- Laiha kazu óbitu ida maka relata iha Timor-Leste durante periodu relatóriu ida ne'e, ida ne'e hanesan semana dasia laiha kazu óbitu.
- Númeru kazu ativu agora to'o loron 25 Janeiro 2022 hamutuk na'in-10.

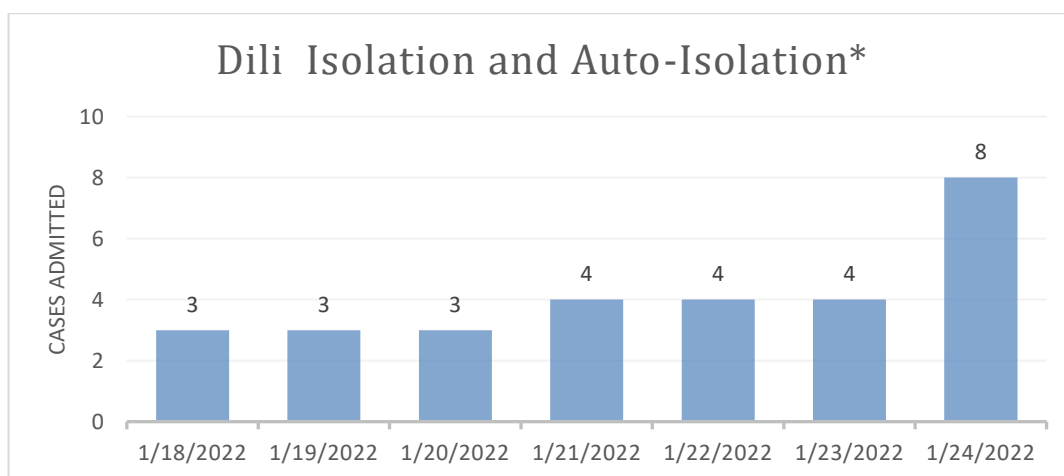
2. Teste diáriu, taxa pozitivu no taxa teste positividade

- Durante data relatóriu atuál ida ne'e husi loron 19-25 Jan. 2022, halo ona teste ba amostra 1,146 kompara ho loron 7 liu ba teste ba amostra hamutuk 1,322.

- Taxa teste positividade husi periodu relatóriu ida ne'e ho médiu 0.4%, kompara ho 0.5% hosi periodu relatóriu liuba, 38% redusaun

JESTAUN KAZU COVID-19

Númeru pasiente tama izolamentu nafatin ki'ik iha Sentru Izolamentu Dili. Daudaun ne'e, laiha pasiente ne'ebé baixa iha sentru izolamentu ba kazu krítiku (Lahane no Vera Cruz). Pasiente ne'ebé alta ikus husi Centru Izolamentu Lahane iha loron 29 Dez. 2021. Figura tuir mai ne'e hatudu númeru kazu iha facilidade izolamentu ka iha uma (auto-izolamentu) iha rai-laran.



*Nota, dados ba munisípiu seidak disponivel daudauk ne'e

IMUNIZASAUN COVID-19

Iha periodu relatóriu ida ne'e (25 Jan. 2022 dadeer), total doze vasina COVID-19 ne'ebé administra 1,237,017 kompostu husi doze dahuluk 670,527 (kobertura 84.0% entre populasaun idade 18 no liu no 20.0% entre populasaun idade 12 to'o <18) no doze daruak 561,208, (kobertura 70.4% entre populasaun idade 18 no liu 16.3% entre populasaun idade 12 to'o <18), doze *booster* 4387 (kobertura 0.6% entre populasaun idade 18 no liu) maka administra ona iha territóriu Timor-Leste tomak. Detallu husi númeru doze vasina ne'ebé administra ona no kobertura tuir produktu vasina no doze vasina nian bele refere ba Tabela 1 & Figura 1.

Tabela 1: Número de doses de vacina COVID-19 recebidas e administradas na cobertura em Dili no Timor-Leste por vacina e marca no dia 25/01/2022 às 10:00hrs

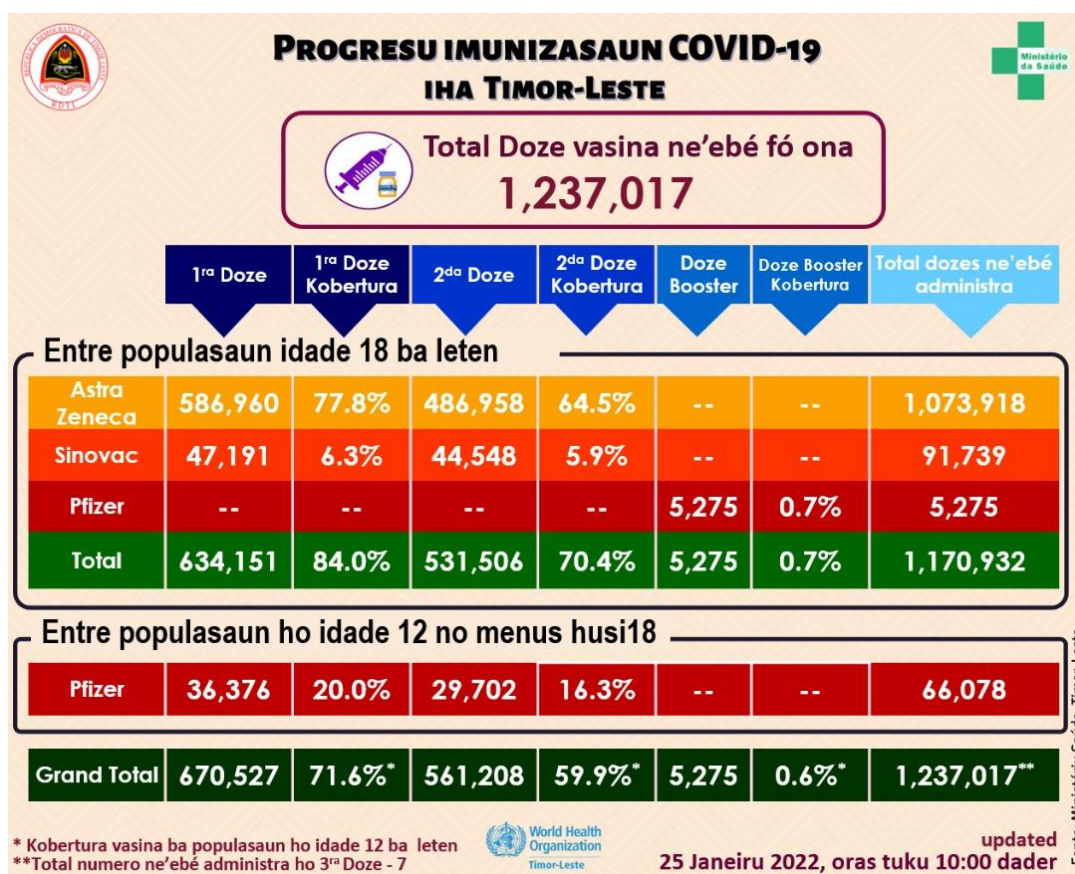


Figura 1: Cobertura de vacina COVID-19 por município em Timor-Leste atualizada 10:00hrs 25/01/2022



Tabela 2: Númeru ema sira ne'ebé simu vasina ho produktu vasina hotu (AstraZeneca, Sinovac, no Pfizer) no EADI tuir sexu iha kada munisípiu iha Timor-Leste, atualizada to'o 10:00 hrs 25/01/2022

Municipality	Number Vaccinated									AEFI		
	First Dose			Second Dose			Third & Booster			Male	Female	Total
	Male	Female	Total	Male	Female	Total	Male	Female	Total			
Dili	121,069	102,985	224,054	109,017	96,082	205,099	3,315	1,967	5,282	14	26	40
Aileu	12,896	12,331	25,227	9,879	9,694	19,573	-	-	-	1	1	2
Ainaro	14,354	13,934	28,288	10,995	11,066	22,061	-	-	-	0	0	0
Baucau	30,608	31,157	61,765	25,717	26,174	51,891	-	-	-	0	0	0
Bobonaro	22,038	21,912	43,950	15,368	15,010	30,378	-	-	-	4	6	10
Covalima	19,356	19,542	38,898	15,542	15,457	30,999	-	-	-	7	6	13
Ermera	27,163	25,143	52,306	20,223	19,025	39,248	-	-	-	0	0	0
Lautem	14,141	15,387	29,528	11,255	12,957	24,212	-	-	-	2	0	2
Liquica	17,977	18,354	36,331	14,701	15,018	29,719	-	-	-	0	1	1
Manatuto	12,263	11,606	23,869	9,214	8,888	18,102	-	-	-	2	0	2
Manufahi	14,751	13,970	28,721	11,705	11,232	22,937	-	-	-	1	2	3
Viqueque	20,187	21,305	41,492	17,512	18,932	36,444	-	-	-	6	0	6
ZEEMS (Oecusse)	17,544	18,554	36,098	14,898	15,647	30,545	-	-	-	0	0	0
Total (without Dili)	223,278	223,195	446,473	177,009	179,100	356,109	-	-	-	23	16	39
Total (Timor-Leste)	344,347	326,180	670,527	286,026	275,182	561,208	3,315	1,967	5,282	37	42	79

Figura 2: Progresu semanal imunizasaun COVID-19 iha Timor-Leste atualizada to'o 10:00 hrs 23/01/2022

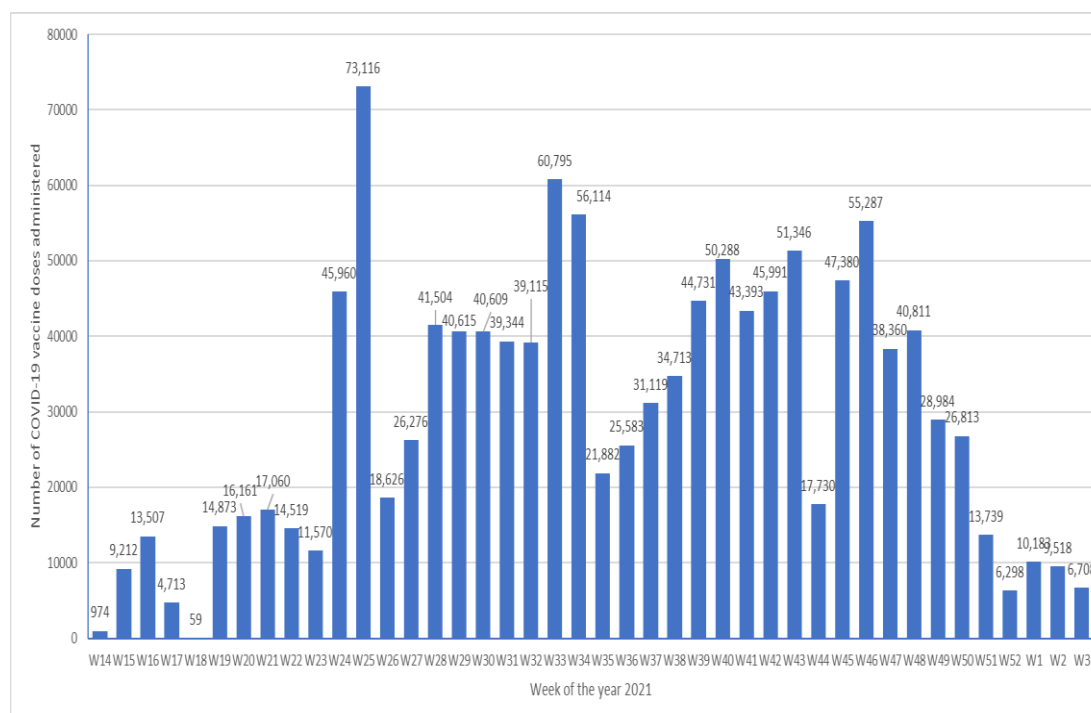


Tabela 3: Número populaçaun idade 12 to'o <18 no liu* ne'ebé simu vasina Pfizer no kobertura tuir munisípiu iha Timor-Leste, atualizada to'o 10:00hrs 25/01/2022

Municipality	12to <18y Population	First Dose				Second Dose			
		12 to <18y Students	12 to <18y Non- students	Total	Coverage	12 to <18y Students	12 to <18y Non- students	Total	Coverage
Dili	41,822	36,336	40	36,376	87.0%	29,685	17	29,702	71.0%
Aileu	7,770	-	-	-	0.0%	-	-	-	0.0%
Ainaro	10,253	-	-	-	0.0%	-	-	-	0.0%
Baucau	18,189	-	-	-	0.0%	-	-	-	0.0%
Bobonaro	14,466	-	-	-	0.0%	-	-	-	0.0%
Covalima	9,729	-	-	-	0.0%	-	-	-	0.0%
Ermera	20,564	-	-	-	0.0%	-	-	-	0.0%
Lautem	10,447	-	-	-	0.0%	-	-	-	0.0%
Liquica	11,137	-	-	-	0.0%	-	-	-	0.0%
Manatuto	7,108	-	-	-	0.0%	-	-	-	0.0%
Manufahi	8,267	-	-	-	0.0%	-	-	-	0.0%
Viqueque	11,490	-	-	-	0.0%	-	-	-	0.0%
ZEEMS (Oecusse)	10,565	-	-	-	0.0%	-	-	-	0.0%
Total (without Dili)	139,985	-	-	-	0.0%	-	-	-	0.0%
Total (Timor-Leste)	181,807	36,336	40	36,376	20.0%	29,685	17	29,702	16.3%

*Based on 2021 population projections

Total Vaccinated (both doses) 66,078

Tabela 4: Númeru ema individuu entre populasau elijivel sira (tinan 18 no liu*) ne'ebé vasinadu ona ho vasina COVID-19 AstraZeneca no Sinovac iha Timor-Leste no kobertura atualizada to'ó 10:00hrs 25/01/2022

Municipality	Eligible Population			Number vaccinated & Coverage																	
	High Risk Groups (20% Pop.)	18-59y no comorbidity (80% Pop.)	Total	First Dose					Second Dose						Booster Dose						
				High Risk Groups (20% Pop.)	Coverage	18-59y no comorbidity (80% Pop.)	Coverage	Total	Coverage	High Risk Groups (20% Pop.)	Coverage	18-59y no comorbidity (80% Pop.)	Coverage	Total	Coverage	High Risk Groups (20% Pop.)	Coverage	18-59y no comorbidity (80% Pop.)	Coverage	Total	Coverage
Dili	29,980	183,822	213,802	53,633	178.9%	134,045	72.9%	187,678	87.8%	34,393	114.7%	141,004	76.7%	175,397	82.0%	2929	1.4%	2346	1.1%	5275	2.5%
Aileu	6,292	24,943	31,235	12,942	205.7%	12,285	49.3%	25,227	80.8%	10,598	168.4%	8,975	36.0%	19573	62.7%	0	0.0%	0	0.0%	0	0.0%
Ainaro	7,410	27,726	35,136	6,716	90.6%	21,572	77.8%	28,288	80.5%	5,005	67.5%	17,056	61.5%	22061	62.8%	0	0.0%	0	0.0%	0	0.0%
Baucau	18,141	55,175	73,316	17,509	96.5%	44,250	80.2%	61,765	84.2%	13,205	73.1%	38,026	70.0%	51891	70.8%	0	0.0%	0	0.0%	0	0.0%
Bobonaro	13,268	43,476	56,744	11,075	83.5%	32,875	75.6%	43,950	77.5%	7,368	55.5%	23,010	52.9%	30378	53.5%	0	0.0%	0	0.0%	0	0.0%
Covallima	8,725	31,503	40,228	10,209	117.0%	28,689	91.1%	38,898	96.7%	7,238	83.6%	23,701	75.2%	30999	77.1%	0	0.0%	0	0.0%	0	0.0%
Ermera	14,350	60,793	75,143	10,940	76.2%	41,300	68.0%	52,306	69.6%	6,500	45.3%	32,742	53.9%	39248	52.2%	0	0.0%	0	0.0%	0	0.0%
Lautem	8,455	27,963	36,418	8,487	100.4%	21,041	75.2%	29,528	81.1%	6,880	81.4%	17,332	62.0%	24212	66.5%	0	0.0%	0	0.0%	0	0.0%
Liquica	9,588	35,507	45,095	9,155	95.5%	27,176	76.3%	36,331	80.4%	6,980	72.9%	22,730	63.9%	29719	65.8%	0	0.0%	0	0.0%	0	0.0%
Manatuto	6,701	21,718	28,419	6,851	102.2%	17,018	78.4%	23,869	84.0%	4,710	70.4%	13,386	61.6%	18102	63.7%	0	0.0%	0	0.0%	0	0.0%
Manufahi	7,595	25,766	33,361	9,666	127.3%	19,055	74.0%	28,721	86.1%	9,287	122.3%	13,650	53.0%	22937	68.8%	0	0.0%	0	0.0%	0	0.0%
Viqueque	11,034	32,005	43,039	12,536	113.6%	28,956	88.0%	41,492	94.4%	10,518	95.3%	25,926	78.8%	36444	82.9%	0	0.0%	0	0.0%	0	0.0%
ZEEMS (Decusse)	9,408	32,534	41,942	11,610	123.4%	24,488	75.3%	36,098	86.1%	8,000	85.7%	22,479	69.1%	30,545	72.8%	0	0.0%	0	0.0%	0	0.0%
Total (without Dili)	120,967	420,098	541,065	127,696	105.6%	318,777	75.9%	446,473	82.5%	96,496	79.8%	259,613	61.8%	356,109	65.8%	0	0.0%	0	0.0%	0	0.0%
Total (Timor-Leste)	150,947	603,920	754,867	181,329	120.1%	452,822	74.98%	634,151	84.0%	130,889	86.7%	400,617	66.3%	531,506	70.4%	2929	0.4%	2346	0.3%	5275	0.7%

*Based on 2021 population projections. Population with Comorbidity 12.5% among 18-59y based on 2016 DHS data
 High Risk Groups (20% of the population) - Healthcare staff, other front line staff, aged 60y and above, and 18-59y with comorbidity
 18-59y with no comorbidity (80% of the population)

Total Vaccinated (all doses) 1,170,932 (Total No. of third Doses - 7)

ANALIZE SITUASAUN

- Númeru kazu insidente ki'ik liu no estavel kompara ho períodu relatóriu liuba. Kompara ho nasaun sira seluk, globalmente no iha rejiaun, Timor-Leste seidaun liu husi aumenta ba kazu ne'ebé aas no onda signikativa ba transmisaun to'o agora. Ida ne'e parese tanba númeru voo internasional ne'ebé relativamente limitadu no mos kobertura vasinasaun ne'ebé reoavelmente di'ak, prinsipalmente iha área kapital nian.
- Iha loron 21 Jan. 2022, Laboratóriu Nasional Saúde (LNS) informa katak amostra 2 hosi amostra 8 ne'ebé haruka ba Peter Doherty Institute Australia detektadu variante Omicron, enkuantu amostra 6 seluk na konsege halo sekuensia ho susesu. Kazu rua ne'e mai husi pasajeiru internasional ne'ebé to'o iha TLS iha loron 29 Dec. 2021. Ba períodu relatóriu ida ne'e, kazu foun sira ne'ebé detekta mai husi pasajeiru no barak mos husi comunidade no husi fatin vijilánsia iha facilidade saúde. Tuir LNS, maioria husi kazu sira ne'e hotu hatudu *S Gene Target Failure (SGTF)*, ne'ebé sujere infesaun husi variante Omicron. Provavelmente Omicron daudauk ne'e sirkula barak ona iha comunidade sira.
- Ba Timor-Leste, ita presiza kontinua aumenta númeru teste entre alvu populasau oin-oin, hanesan fatin sentinela sira, kontaktu besik kazu pozitivu no kazu suspeitu sira husi facilidade saúde, nst. Iha tempu hanesan, kapasitasaun ba jestaun kazu tenke intesifikada atu bele responde lais bainhira kazu aumenta maka'as.

PREOKUPASAUN ÁTUAL

Projasaun IHME COVID-19: SEARO – 21 Janeiro 2022

- **Iha rejiaun hotu iha Aziátiku Sudeste, onda infesaun Omicron husi parte oeste no leste kontinua aumenta.** Iha númeru nasaun balun atinji infesaun ne'ebé ho númeru aas ka iha possibilidade atu aumenta iha semana hirak tuirmai ne'e, inklui India, Nepal, no Bangladesh. Maibé, variante Omicron mós kontinua ba nasaun iha parte sudeste nian, hanesan Sri Lanka, Myanmar, no Indonesia iha possibilidade sei hare onda variante Omicron da'et iha fulan febreiru ikus. Tempu husi onda inisiu kontinua nafatin entre loron 20-25 maske nivel vasinasaun no hetan infesaun antes.
- **Haree ba saida mak ita aprende husi onda variante Omicron nia velocidade no intensidade, nuneé política ba intervensaun hatudu iha de'it impaktu ne'ebé limitadu ba tempu badak.** Iha senáriu Timor-Leste nian, kontinua uza máskara no doze datoluk hodi bele aselera hamenus transmisaun virus, maibé kompara ho variante hirak liubá ne'e efeitu hirak ne'e ladun makaas. Halo teste, rastreiu kontaktu, no kuarentena laiha possibilidade atu fó impaktu makaas haree ba númeru infesaun iha kuaze nasaun barak. Nuneé, esforsu prinsipál ne'ebé governu tenke foka maka fó apoiu ba sistema saúde hodi bele hasoru presaun tanba enfrenta paciente barak baixa tanba COVID-19.

- **Depois variante Omicron menus, infesaun ne'ebé hetan no imunidade ne'ebé menus kauza husi vasina sei rezulta ba nivel transmisaun virus iha durasaun semana ka fulan.** Iha potencialidade katak virus sei menus durante tempu rai manas ne'ebé bele aumenta periodu infesaun COVID-19 ho nivel transmisaun ki'ik to'o tinan ne'e remata.
- **Prepara an ba Ameasa Saúde iha Futuru:** Atu prepara ba variante COVID-19 iha future, nasaun sira tenke:
 - Mantein vijilánsia no monitorizasaun karik iha variante foun mosu,
 - Kontinua promove vasinasaun inklui doze datoluk,
 - Aumenta asesu ba antiviral ne'ebé efikás, no
 - Fornese guia ba grupu risku sira hodi utiliza máskara ho kualidade aas no distánsia sosial bainhira variante foun ne'ebé grave liu Omicron mosu.

Fonte: https://www.healthdata.org/sites/default/files/files/44565_briefing_South-East_Asia_Region.pdf

REKURSU NE'EBÉ DISPONIVEL

- [Ba públiku jerál no profesionál saúde sira kona-ba prevensaun, tratamentu, no vasina, nsst.](#)
- [Rekomendasaun OMS ba Desizaun Relasiona ho COVID-19](#)
- Kursu gratuita iha Tetum – [OpenWHO.org](https://openwho.org)

KONTAKTU MÉDIA NO INFORMASAUN KONA-BA COVID-19

- Ministériu Saúde estabelese ona númeru *hotline* – 119 – ba COVID-19 ne'ebé maka ema hotu-hotu bele kontaktu hodi hetan informasaun relasiona ho COVID-19
- Alende ne'e, [Páijina Facebook MS](#) nian fornese atualizasaun loloos kona-ba desenvolvimentu COVID-19 iha rai laran
- OMS Timor-Leste liuhusi nia [Páijina Facebook](#) no [Twitter](#) mós disemina informasaun kona-ba medida preventiva, pergunta no resposta, *myth-buster* no atualizasaun ikus kona-ba COVID-19 iha mundu tomak no iha rai laran. Ba media no pedidu ba entrevista bele manda ba hasane@who.int ka wcotimorleste@who.int