



# Coronavirus Disease 2019 (COVID-19)

Situation Report – 137

## Timor-Leste

\*Data as reported on 1 February 2022

### SITUATION IN NUMBERS

#### TIMOR-LESTE



Cumulative  
**20,105 (234)**



Recovered (new)  
**19,746 (7)**



Active cases  
**237**



Deaths (new)  
**122 (0)**

#### VACCINATION STATUS



1<sup>st</sup> dose - **672,453**  
Coverage - **84.2%\*\***



2<sup>nd</sup> dose - **564,575**  
Coverage - **70.8%\*\***

\*As per data released by the [Ministry of Health](#)

\*\*For adult population 18 years and above

#### GLOBAL



Cases  
**373,229,380**



Deaths  
**5,658,702**

#### VACCINATION



**9,901,135,033** doses

### HIGHLIGHTS

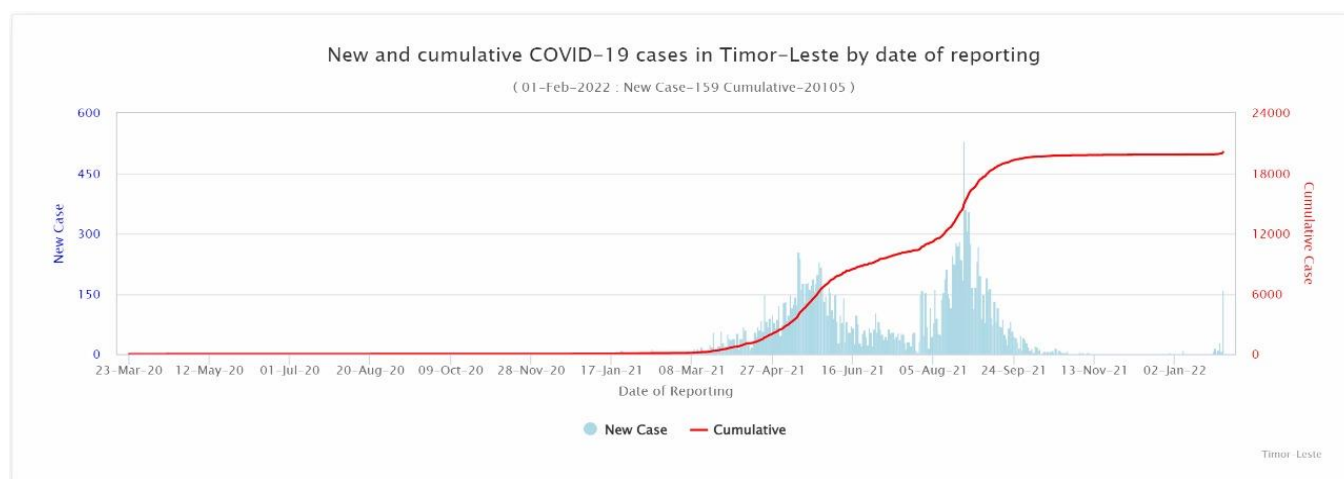
- Since the last edition of the weekly situation report, the Ministry of Health (MoH) reported **234** new case of COVID-19, **7** recoveries and **0** deaths. The number of incident cases has risen substantially since the last reporting period.
- The Government of Australia and UNICEF delivered 259,740 doses of the Pfizer BioNTech vaccine to the Government of Timor-Leste on Saturday 29 January 2022. This is part of a total 1,260,090 doses of Pfizer BioNTech vaccine that Australia and UNICEF will deliver to Timor-Leste in the coming months.
- Pillar 7 and WHO Country Office are conducting a joint assessment of the readiness of isolation/ treatment centers in Dili in preparation for a likely surge in cases, driven by the Omicron variant. Findings and recommendations will be submitted to MOH for further discussions and actions.
- UNICEF coordinated the development of the Country Delivery Support (CDS) proposal with technical inputs from WHO and together with MOH. The proposal outlines operational and expansion plan keeping the resource availability from WHO, UNICEF, MoH and other bilateral/multilateral donors, and reflect the funding gap to sustain the COVID-19 vaccination. The proposal was submitted on 26th January, 2022.

- UNICEF and USAID handed over the water, sanitation and hygiene (WASH) improvements made at the Venilale Community Health Center (CHC) on 27 January, as part of a wider effort to help improve infection prevention and control at a total of 34 Community Health Centers in 5 municipalities. WASH improvements have already been completed in 20 of these CHCs, including at Venilale, and are benefitting an estimated 20,000 people in the catchment areas of the CHCs where work has been completed.
- Sixty public health inspectors, supported by WHO, has been deployed in different Sucos in Dili to strengthen the COVID-19 and dengue preventive work at the community level. Their work includes health information dissemination, clean up the environment and containers, dissemination of Abate (to control mosquito breeding), as well as monitoring the implementation of preventive measures.
- WHO teams and the immunization consultants deployed in 10 municipalities continue to be on the ground supporting the vaccination teams in all municipalities to increase the COVID-19 vaccination coverage and routine immunization in the country.
- UNICEF supports community mobilization through the deployment of 13 technical personnel in all municipalities to help raise awareness on COVID-19 prevention, vaccine uptake, promotion of routine health and nutrition services. This is supported through messaging on community radio and national television (RTTL).

## EPIDEMIOLOGICAL UPDATES

### 1. New and cumulative cases, 23 Mar. 2020 – 1 Feb. 2022

As shown by the epi curve below, the number of incidence cases has been rising again during the recent two reporting periods after very small number of cases for weeks, indicative the third transmission wave which is driven by the Omicron variant. See more data below.



### 2. Distribution of cases and deaths by municipalities

Distribution of newly reported, recovered, and active cases by municipalities, as of 1 February 2022)

Municipality	New case (26 Jan. – 1 Feb. 2022)	Last 7-day % change (case)*	Cumulative case	New recovered (26 Jan. – 1 Feb. 2022)	Cumulative recovered	New death (26 Jan. – 1 Feb. 2022)	Cumulative death	Active Cases (1 Feb. 2022)
Aileu	0	0	126	0	125	0	1	0
Ainaro	0	0	227	0	224	0	3	0
Baucau	0	0	1542	0	1535	0	7	0
Bobonaro	1	100	615	0	605	0	9	1
Covalima	0	0	790	0	787	0	3	0
Dili	232	3767	14002	7	13686	0	81	235
Ermera	0	0	1113	0	1111	0	2	0
Lautem	1	0	185	0	179	0	5	1
Liquica	0	0	125	0	124	0	1	0
Manatuto	0	0	203	0	201	0	2	0
Manufahi	0	0	265	0	265	0	0	0
RAEOA	0	0	393	0	390	0	3	0
Viqueque	0	0	519	0	514	0	5	0
TOTAL	234	3800	20105	7	19746	0	122	237

\*Change in new COVID-19 cases as compared with the previous 7 days

- A total of 232 incident cases are reported during the current reporting period (26 Jan. – 1 Feb. 2022), as compared 6 cases reported during the previous reporting period (18 - 25 Jan. 2022), with a 38 folds increase. All but 2 case are reported from Dili, while the 2 case are from Bobonaro and Lautem municipalities respectively.

The cases reported are primarily close contacts of the confirmed cases, of which majority are students from several secondary schools in Dili. Moreover, cases have been detected among international travellers and sentinel surveillance sites at different health care facilities.

- No death has been reported from Timor-Leste during this reporting period, which is the thirteenth consecutive reporting period with no death reported.
- The number of active cases has been 237 as of 1 Feb. 2022.

### 3. Number of test and test positivity rates

During the current reporting period from 25 Jan. – 1 Feb. 2022, 2,582 tests were conducted, as compared to 1,146 tests in the previous 7 days.

The test positive rate of this reporting period is averaged as 9.1%, as compared with 0.4% of the previous reporting period, a 16 fold increase.

### 4. S gene target failure (SGTF) among the test positives:

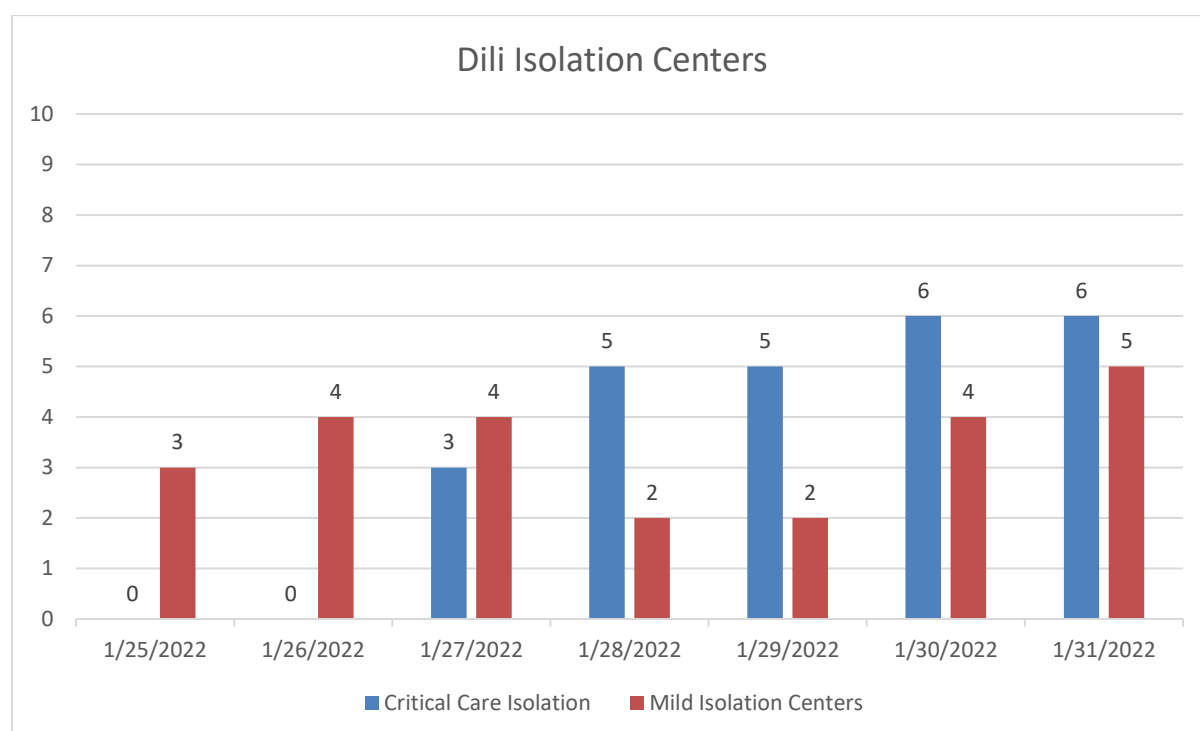
Date	No. Positives*	No. with SGTF	% with SGTF
6/1/2022	11	11	100.00
8/1/2022	3	1	33.33
12/1/2022	1	1	100.00
13/01/2022	1	1	100.00
15/01/2022	2	1	50.00
17/01/2022	1	1	100.00
18/01/2022	2	2	100.00
22/01/2022	2	2	100.00
23/01/2022	1	1	100.00
24/01/2022	3	3	100.00
25/01/2022	4	4	100.00
26/01/2022	13	13	100.00
27/01/2022	8	8	100.00
28/01/2022	10	10	100.00
29/01/2022	25	25	100.00
30/01/2022	6	6	100.00
31/01/2022	161	158	98.14
<b>Total tested</b>	<b>254</b>	<b>248</b>	<b>97.64</b>

\*Only part of the samples are confirmed with ABI PCR test using Taqpath kits.

Some sub-lineages of the Omicron variant have demonstrated S gene target failure (SGTF), which can be used as a proxy for detecting and reporting Omicron when genome sequencing is not available, which is the case for Timor-Leste. As demonstrated by the Table above, of the 254 samples positive for SARS-CoV-2 infection, 248 has demonstrated SGTF (97.6%). It suggests that Omicron has possibly become the predominant variant in Timor-Leste.

## CASE MANAGEMENT

On 27 January 2022, 3 mild maternity patients were admitted to Lahane Isolation Center. Since Vera Cruz Isolation Center has been repurposed for Dengue treatment, Lahane has been opened to care for mild patients with risk factors. By 31 January, a total of 6 mild maternity patients were admitted to Lahane for close monitoring, and 5 patients in other isolation centers. All patients remain in stable condition. All the other active cases are under home based isolation.



\*Note, the municipality data is not currently available currently.

Further information on isolation and quarantine facilities will be provided in the next edition of the SitRep once the assessment of facilities is thoroughly reviewed and deliberated by the Ministry of Health.

## VACCINATION

At the time of writing this report (01/01/2022 morning), in total, 1,242,540 COVID-19 vaccine doses comprising 672,453 first doses (coverage 84.2% among population aged 18 years and above and 20.4% among the population aged 12 years to <18 years), 564,575 second doses (coverage 70.8% among population aged 18 years and above and 16.4% among the population aged 12 years to <18 years), 5,505 (coverage 0.7% among population aged 18 years) booster doses were administered in Timor-Leste. The breakdown of the number of doses administered and coverage by vaccine product and vaccine dose is illustrated in Table 1.

**Table 1: Number of COVID-19 vaccine doses administered and coverage in Timor-Leste by vaccine product and dose as of 10:00hrs 01/02/2022**

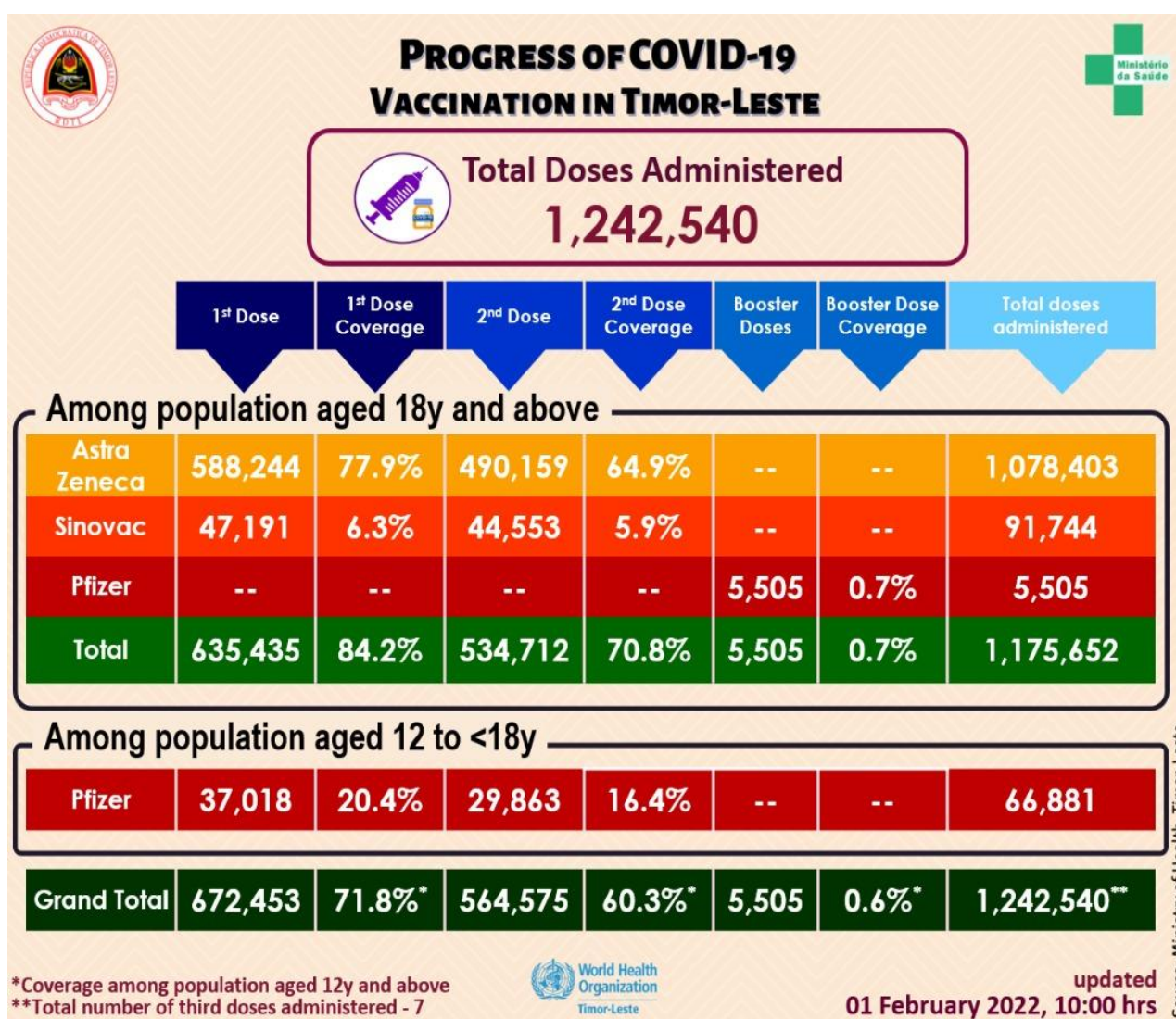




Figure 1: Coverage of COVID-19 vaccination among population aged 18 years and above by municipality in Timor-Leste as of 10:00hrs 01/02/2022

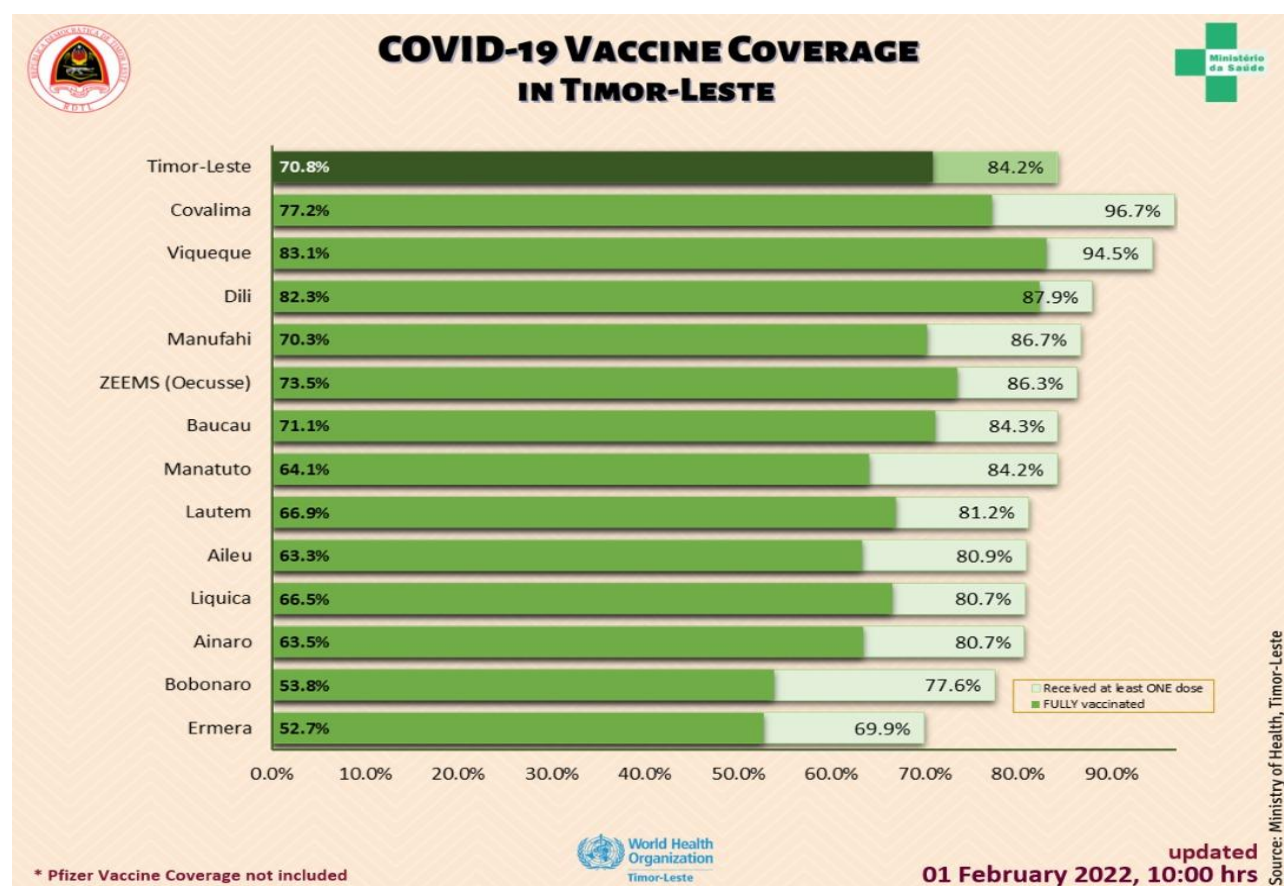
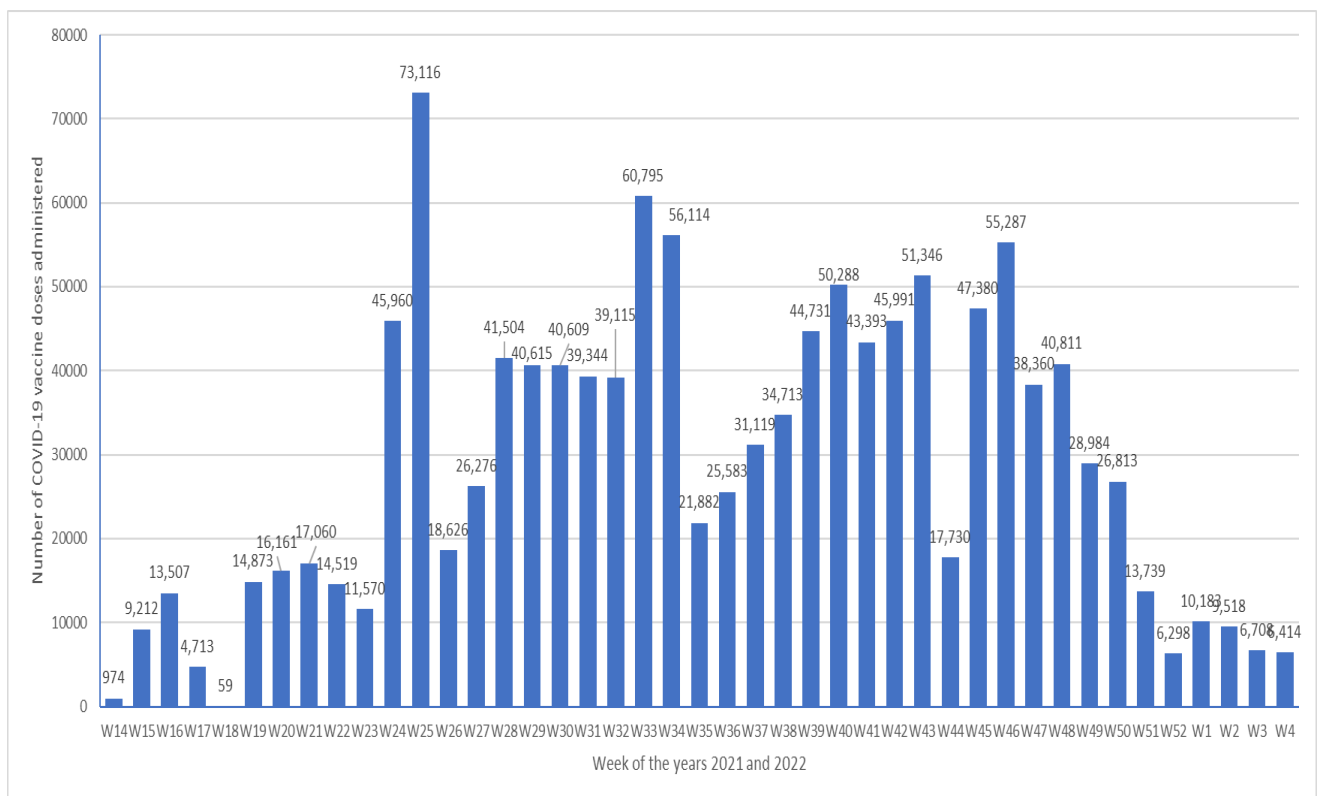


Table 2: Total number of individuals vaccinated with all the vaccine products (AstraZeneca, Sinovac, and Pfizer) and AEFI by sex by district in Timor-Leste as of 10:00 hrs 01/02/2022

Municipality	Number Vaccinated									AEFI		
	First Dose			Second Dose			Third & Booster			Male	Female	Total
	Male	Female	Total	Male	Female	Total	Male	Female	Total			
Dili	121,560	103,413	224,973	109,295	96,432	205,727	3,452	2,060	5,512	14	26	40
Aileu	12,915	12,351	25,266	9,951	9,824	19,775	-	-	-	1	1	2
Ainaro	14,382	13,970	28,352	11,097	11,198	22,295	-	-	-	0	0	0
Baucau	30,618	31,185	61,803	25,885	26,278	52,163	-	-	-	0	0	0
Bobonaro	22,061	21,944	44,005	15,429	15,122	30,551	-	-	-	4	6	10
Covalima	19,359	19,557	38,916	15,556	15,482	31,038	-	-	-	7	6	13
Ermera	27,274	25,282	52,556	20,401	19,231	39,632	-	-	-	0	0	0
Lautem	14,154	15,405	29,559	11,309	13,039	24,348	-	-	-	2	0	2
Liquica	18,018	18,449	36,467	14,839	15,228	30,067	-	-	-	0	1	1
Manatuto	12,294	11,639	23,933	9,252	8,955	18,207	-	-	-	2	0	2
Manufahi	14,822	14,090	28,912	11,929	11,529	23,458	-	-	-	1	2	3
Viqueque	20,194	21,315	41,509	17,531	18,969	36,500	-	-	-	6	0	6
ZEEMS (Oecusse)	17,569	18,633	36,202	15,005	15,809	30,814	-	-	-	0	0	0
Total (without Dili)	223,660	223,820	447,480	178,184	180,664	358,848	-	-	-	23	16	39
Total (Timor-Leste)	345,220	327,233	672,453	287,479	277,096	564,575	3,452	2,060	5,512	37	42	79

**Figure 2: Weekly progress of COVID-19 vaccination in Timor-Leste as of 10:00 hrs 30/01/2022**



**Table 3. Number of individuals among population aged 12 years to <18 years and above\* vaccinated with Pfizer vaccine and coverage by district in Timor-Leste as of 10:00hrs 01/02/2022**

Municipality	12to <18y Population	First Dose				Second Dose			
		12 to <18y Students	12 to <18y Non-students	Total	Coverage	12 to <18y Students	12 to <18y Non-students	Total	Coverage
Dili	41,822	36,975	43	37,018	88.5%	29,845	18	29,863	71.4%
Aileu	7,770	-	-	-	0.0%	-	-	-	0.0%
Ainaro	10,253	-	-	-	0.0%	-	-	-	0.0%
Baucau	18,189	-	-	-	0.0%	-	-	-	0.0%
Bobonaro	14,466	-	-	-	0.0%	-	-	-	0.0%
Covalima	9,729	-	-	-	0.0%	-	-	-	0.0%
Ermera	20,564	-	-	-	0.0%	-	-	-	0.0%
Lautem	10,447	-	-	-	0.0%	-	-	-	0.0%
Liquica	11,137	-	-	-	0.0%	-	-	-	0.0%
Manatuto	7,108	-	-	-	0.0%	-	-	-	0.0%
Manufahi	8,267	-	-	-	0.0%	-	-	-	0.0%
Viqueque	11,490	-	-	-	0.0%	-	-	-	0.0%
ZEEMS (Oecusse)	10,565	-	-	-	0.0%	-	-	-	0.0%
Total (without Dili)	139,985	-	-	-	0.0%	-	-	-	0.0%
<b>Total (Timor-Leste)</b>	<b>181,807</b>	<b>36,975</b>	<b>43</b>	<b>37,018</b>	<b>20.4%</b>	<b>29,845</b>	<b>18</b>	<b>29,863</b>	<b>16.4%</b>

\*Based on 2021 population projections



**Table 4. Number of individuals among population aged 18 years and above\* vaccinated with AstraZeneca and Sinovac vaccines and coverage by district in Timor-Leste as of 10:00hrs 01/02/2022**

Municipality	Eligible Population			Number vaccinated & Coverage																	
	High Risk Groups (20% Pop.)	18-59y no comorbidity (80% Pop.)	Total	First Dose						Second Dose						Booster Dose					
				High Risk Groups (20% Pop.)	Coverage	18-59y no comorbidity (80% Pop.)	Coverage	Total	Coverage	High Risk Groups (20% Pop.)	Coverage	18-59y no comorbidity (80% Pop.)	Coverage	Total	Coverage	High Risk Groups (20% Pop.)	Coverage	18-59y no comorbidity (80% Pop.)	Coverage	Total	Coverage
Dili	29,980	183,822	213,802	53,651	179.0%	134,304	73.1%	187,955	87.9%	34,437	114.9%	141,427	76.9%	175,864	82.3%	3055	1.4%	2450	1.1%	5505	2.6%
Alieu	6,292	24,943	31,235	12,966	206.1%	12,300	49.3%	25,266	80.9%	10,725	170.5%	9,050	36.3%	19,775	63.3%	0	0.0%	0	0.0%	0	0.0%
Ainaro	7,410	27,726	35,136	6,724	90.7%	21,628	78.0%	28,352	80.7%	5,054	68.2%	17,241	62.2%	22,295	63.5%	0	0.0%	0	0.0%	0	0.0%
Baucau	18,141	55,175	73,316	17,312	96.5%	44,291	80.3%	61,803	84.3%	13,423	74.0%	38,740	70.2%	52,163	71.1%	0	0.0%	0	0.0%	0	0.0%
Bobonaro	13,268	43,476	56,744	11,079	83.5%	32,926	75.7%	44,005	77.6%	7,386	55.7%	23,165	53.3%	30,551	53.8%	0	0.0%	0	0.0%	0	0.0%
Covalima	8,725	31,503	40,228	10,211	117.0%	28,705	91.1%	38,916	96.7%	7,308	83.8%	23,730	75.3%	31,038	77.2%	0	0.0%	0	0.0%	0	0.0%
Ermera	14,350	60,793	75,143	10,979	76.5%	41,577	68.4%	52,556	69.9%	6,564	45.7%	33,068	54.4%	39,632	52.7%	0	0.0%	0	0.0%	0	0.0%
Lautem	8,455	27,963	36,418	8,492	100.4%	21,067	75.3%	29,559	81.2%	6,901	81.6%	17,447	62.4%	24,348	66.9%	0	0.0%	0	0.0%	0	0.0%
Liquica	9,588	35,507	45,095	9,183	95.8%	27,284	76.6%	36,467	80.7%	7,050	73.5%	23,017	64.7%	30,067	66.5%	0	0.0%	0	0.0%	0	0.0%
Manufuto	6,701	21,718	28,419	6,868	102.5%	17,085	78.6%	23,933	84.2%	4,758	71.0%	13,431	61.9%	18,207	64.1%	0	0.0%	0	0.0%	0	0.0%
Manufahl	7,595	25,766	33,361	9,696	127.7%	19,216	74.6%	28,912	86.7%	9,444	124.3%	14,014	54.4%	23,458	70.3%	0	0.0%	0	0.0%	0	0.0%
Viqueque	11,034	32,905	43,939	12,541	113.7%	28,968	88.0%	41,509	94.5%	10,540	95.5%	25,960	78.9%	36,500	83.1%	0	0.0%	0	0.0%	0	0.0%
ZEEMS (Ducusse)	9,408	32,334	41,942	11,628	123.6%	24,574	75.5%	36,202	86.3%	8,107	86.2%	22,707	69.8%	30,814	73.5%	0	0.0%	0	0.0%	0	0.0%
Total (without Dili)	120,967	420,098	541,065	127,879	105.7%	319,601	76.1%	447,480	82.7%	97,258	80.4%	261,590	62.3%	358,848	66.3%	0	0.0%	0	0.0%	0	0.0%
Total (Timor Leste)	150,947	603,920	754,867	181,530	120.3%	453,905	75.16%	635,435	84.2%	131,695	87.2%	403,017	66.7%	534,712	70.8%	3055	0.4%	2450	0.3%	5505	0.7%

\*Based on 2021 population projections. Population with Comorbidity 12.5% among 18-59y based on 2016 DHS data

High Risk Groups (20% of the population) - Healthcare staff, other front line staff, aged 60y and above, and 18-59y with comorbidity

18-59y with no comorbidity (80% of the population)

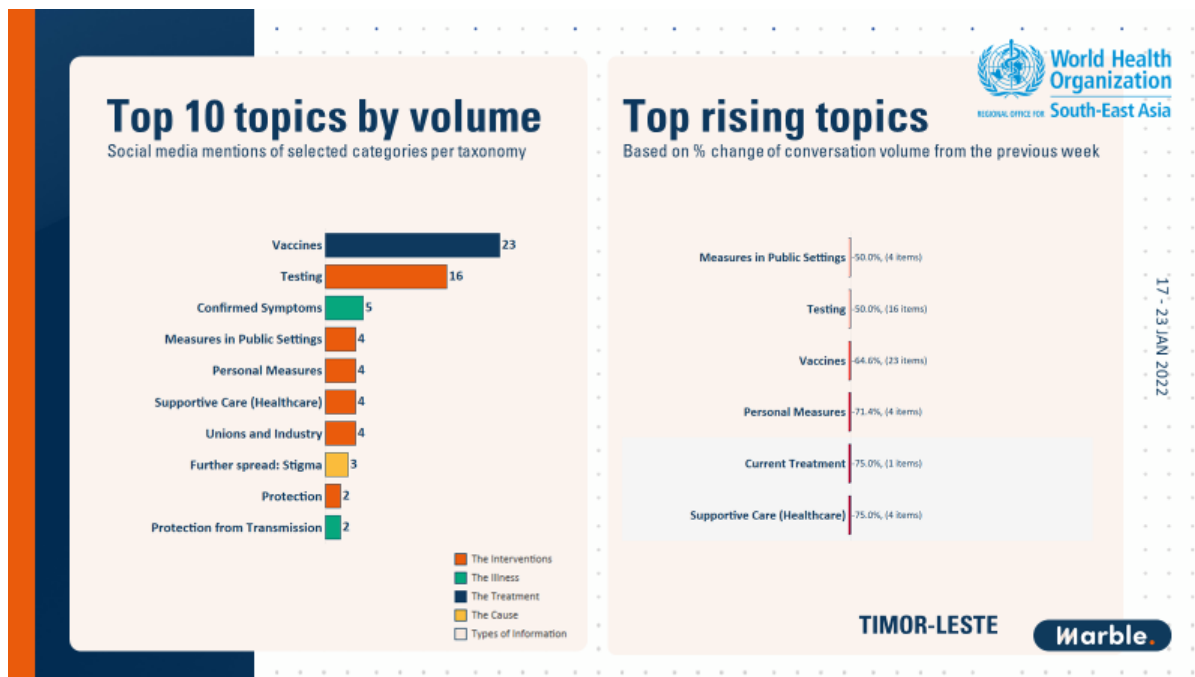
Total Vaccinated (all doses) 1,175,652 (Total No. of third Doses - 7 )

## SITUATION ANALYSIS

- The number of incident cases has been increased substantially during the current reporting period. Most of the cases are secondary school students from Dili who are close contacts of confirmed cases. Most of these cases have been fully vaccinated and demonstrated no symptoms or signs so far. Vast majority of the cases demonstrated SGTF, suggesting a wave of transmission has started, driven predominantly by Omicron, as shown in most other countries in the world and in the region.
- With the expected large number of cases during the coming weeks, efforts to speed up preparedness and capacity building for severe and critical cases is critical.
- With the arrival of quantity of mRNA vaccines, efforts are being made to speed up the vaccination of adolescents across the country.

## CURRENT CONCERN

### COVID-19 related social media monitoring for Timor-Leste



#### Summary:

- **Vaccines** were the most discussed topic during the reporting period (**23 mentions**).
  - Although this was the most prominent topic, conversation did not generate high levels of engagements. Many discussed the activities of UN organisations in the country.

- The [UN Timor Leste](#) obtained some engagement when they described how Timor-Leste had distributed 1.23 million COVID-19 vaccine doses (7 engagements).
- [UNICEF Timor-Leste](#) described how social mobilization technical personnel were deployed in every municipality to help healthcare staff raise awareness of COVID-19, dengue prevention, COVID-19 vaccine uptake, nutrition & routine immunization (4 engagements).
- [WHO Timor Leste](#) commented on the importance of taking the vaccine and taking the recommended number of doses of the vaccine (5 engagements).

Source: WHO SEARO. SEAR COVID-19 Infodemic Digital Intelligence, 17-23 Jan. 2022

### AVAILABLE RESOURCES

- [For public and professionals on prevention, treatment, and vaccination etc.](#)
- [WHO Recommendations for COVID-19 Related Decisions](#)
- WHO Free Courses in Tetum – [OpenWHO.org](#)

### COVID-19 INFORMATION AND MEDIA QUERIES

- The MoH has established a hotline number – 119 – for COVID-19 on which people can call to get any COVID-19 related information.
- Additionally, [MoH Facebook page](#) provides timely updates on COVID-19 developments in the country.
- WHO Timor-Leste through its [Facebook page](#) and [Twitter handle](#) also disseminates information on preventive measures, questions and answers, myth-busters and latest updates on COVID-19 globally and nationally.
- For media queries and interviews requests can be sent to [hasane@who.int](mailto:hasane@who.int)