

Moras virus Corona 2019 (COVID-19)

Relatóriu Situasaun – 137

Timor-Leste



World Health
Organization

Timor-Leste

*Dadus relata to'o loron 1 Feveireiru 2022

SITUASAUN IHA NÚMERU

TIMOR-LESTE



Kumulativu
20,105 (234)



Rekuperadu (foun)
19,746 (7)



Kazu ativu
237



Óbitu (foun)
122 (0)

GLÓBÁL



Kazu
373,229,380



Óbitu
5,658,702

PROGRESU IMUNIZASAUN COVID-19



Doze 1^a – **672,453**
Kobertura – **84.2%****



Doze 2^a – **564,575**
Kobertura – **70.8%****

* Bazeia ba dadus ne'ebé pública husi [Ministerio da Saúde](#)

** Ba populasaun adultu tinan 18 ba leten

PROGRESU IMUNIZASAUN COVID-19



Doze vasina
9,901,135,033

SUMÁRIU

- Dezde edisaun ikus relatóriu situasaun, Ministeriu Saúde relata hamutuk **234** kazu foun COVID-19, kazu rekuperadu **7** no kazu óbitu **0**. Número kazu foun COVID-19 aumenta maka'as dezde periodu relatóriu ikus.
- Governu Austrália ho UNICEF entrega ona vasina Pfizer BioNTech hamutuk doze 259,740ba Governu Timor-Leste iha Sábado, 29 Janeiru 2022. Ida ne'e parte ida husi vasina Pfizer BioNTech ho total doze 1,260,090 ne'ebé Austrália ho UNICEF sei entrega ba Timor-Leste iha fulan hira nia laran tuir mai.
- Pilar 7 ho Representasaun OMS iha Timor-Leste hala'o hela avaliasaun conjunta ba prontidaun sentru izolamentu/tratamentu sira iha Dili, hodi prepara ba aumentu kazu ne'ebé provavelmente sei akontese kauza hosi variante Omicron. Konklusaun no rekomendasaun sira sei submite ba Ministeriu Saúde hodi bele utiliza ba diskusaun no halo asaun iha future.
- UNICEF lidera ona dezentvolvimentu ba proposta CDS hodi refleta rekursu UNICEF, Ministeriu Saúde no doadores bilateral/multilateral seluk sira nian ne'ebé disponível hela, no refleta interupsaun finansial hodi sustenta ba responde COVID-19 ba tinan ida tan. Proposta CDS ne'e submeter ona ba GAVI iha loron 26 Janeiru 2022.
- UNICEF no USID entrega ona bee, saneamentu no ijiene (WASH – *Water, Sanitation and Hygiene*) ne'ebé hadi'ak ona iha Sentru Saúde Komunitáriu (SSK) Venilale iha loron 27 Janeiru,

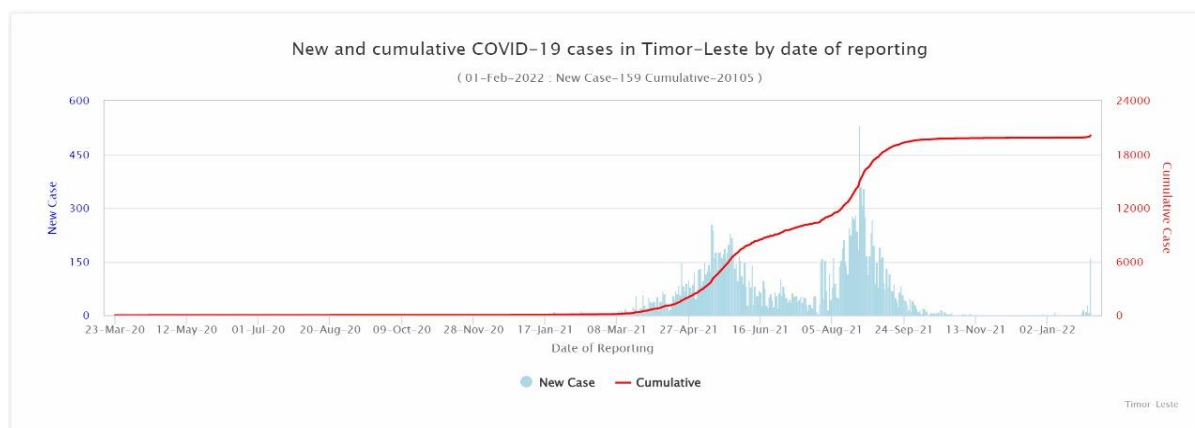
hanesan parte ida husi esforsu ne'ebé boot liu hodi ajuda mellora prevensaun no kontrole infeisaun iha SSK hamutuk 34 iha munisípio 5. Hadi'ak WASH hirak ne'e kompleta ona iha SSK hamutuk 20, inklui Venilale, no fo benefísiu ba total ema 20,000 iha área kaptasaun SSK nian ne'ebé servisu kompleta ona.

- Inspetor Sanitária hamutuk 60, ne'ebé hetan suporta husi OMS, destaka ona iha Suku sira iha Dili hodi haforsa servisu preventivu COVID-19 no denge iha nível komunitáriu. Sira-nia servisu inklui fahe informasaun sanitaria, hamoos ambiente no resipiente sira, disemina Abate (kontrola reproduasaun susuk), no mós monitór implementasaun medidas preventivas.
- Ekipa OMS no asesor imunizasaun sira ne'ebé destaka ona iha munisípiu 10 kontinua iha terenu hodi apoiu ekipa vasinasaun sira iha munisípiu hotu hodi haluan kobertura vasinal COVID-19 nian no mós vasinasaun rotina iha rai laran.
- UNICEF apoia mobilizasaun comunidade liu husi destaka tékniku hamutuk 14 iha munisípiu hotu hodi bele ajuda aumenta konsientizasaun kona-ba prevensaun COVID-19, kompreensaun vasina, promosaun ba servisu saúde no nutrisaun rotina. Ida ne'e apoiu ho maneira fahe mansajen iha rádiu no iha televizaun nasional (RTTL).

ATUALIZASAUN EPIDEMIOLOGIA

1. Kazu COVID-19 kumulativu no kazu foun

Hanesan hatudu iha gráfiku epi tuir mai ne'e, númeru kazu insidente sa'e fali ona iha períodu relatóriu rua tutuir malu ne'e hafoin numeru kazu ne'ebé ki'ik iha semana hirak nia laran, ida ne'e signifika onda transmisaun datoluk ne'ebé kauza husi variante Omicron.



2. Distribuisaun kazu no kazu óbitu tuir munisípiu

Distribusaun kazu foun ne'ebé relata, kazu rekuperadu no kazu ativu tuir munisípiu, to'o loron 1 Feveiru 2022

Munisípiu	Kazu foun (26 Jan. – 1 Fev. 2022)	Loron 7 - mudansa % (kazu)*	Kazu kumulativu	Kazu rekuperadu (26 Jan. – 1 Fev. 2022)	Kazu rekuperadu kumulativu	Kazu óbitu foun (26 Jan. – 1 Fev. 2022)	Kazu óbitu kumulativu	Kazu ativu (1 Fev. 2022)
Aileu	0	0	126	0	125	0	1	0
Ainaro	0	0	227	0	224	0	3	0
Baucau	0	0	1542	0	1535	0	7	0
Bobonaro	1	100	615	0	605	0	9	1
Covalima	0	0	790	0	787	0	3	0
Dili	232	3767	14002	7	13686	0	81	235
Ermera	0	0	1113	0	1111	0	2	0
Lautem	1	0	185	0	179	0	5	1
Liquica	0	0	125	0	124	0	1	0
Manatuto	0	0	203	0	201	0	2	0
Manufahi	0	0	265	0	265	0	0	0
RAEOA	0	0	393	0	390	0	3	0
Viqueque	0	0	519	0	514	0	5	0
TOTAL	234	3800	20105	7	19746	0	122	237

*Mudansa kazu COVID-19 kompara ho loron 7 ikus

- Total kazu foun hamutuk 232 ne'ebé relata iha períodu relatóriu (26 Jan.-1 Fev. 2022), kompara ho kazu 6 ne'ebé relata iha periodu relatóriu ikus (18-25 Jan. 2022) ho aumenta dala 38. Kazu hotu menus kazu rua relata husi Dili, kazu rua ne'e relata husi Bobonaro no Lautem.

Kazu hirak ne'e prinsipalmente sira ne'ebé halo kontaktu besik ho kazu konfirmadu sira, ne'ebé maioria estudante husi eskola sekundaria balun iha Dili. Alein ida ne'e kazu sira seluk detektadu husi pasajeiru internasional sira no husi vijilánsia sentinela iha facilidade saúde balun.

- Laiha kazu óbitu ida maka relata iha Timor-Leste durante periodu relatóriu ida ne'e, ida ne'e hanesan semana da-13 laiha kazu óbitu.
- Númeru kazu ativu agora to'o loron 1 Feveireiru 2022 hamutuk na'in-237.

3. Teste diáriu, taxa pozitivu no taxa teste positividade

- Durante data relatóriu atuál ida ne'e husi loron 25 Jan.-1 Fev. 2022, halo ona teste ba amostra 2,582 kompara ho loron 7 liu ba teste ba amostra hamutuk 1,146.
- Taxa teste positividade husi periodu relatóriu ida ne'e ho médiu 9.1%, kompara ho 0.4% hosi periodu relatóriu liuba, aumenta dala 16.

4. *S gene target failure* (SGTF) entre teste pozitivu sira:

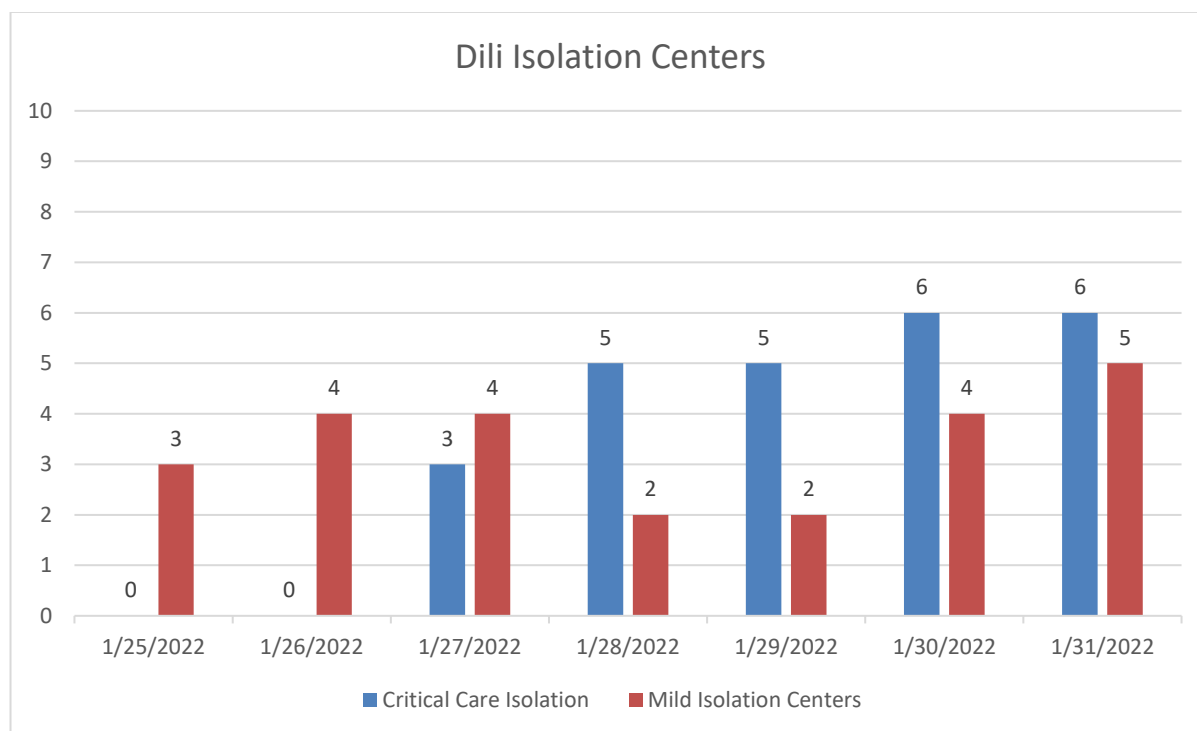
Date	No. Positives*	No. with SGTF	% with SGTF
6/1/2022	11	11	100.00
8/1/2022	3	1	33.33
12/1/2022	1	1	100.00
13/01/2022	1	1	100.00
15/01/2022	2	1	50.00
17/01/2022	1	1	100.00
18/01/2022	2	2	100.00
22/01/2022	2	2	100.00
23/01/2022	1	1	100.00
24/01/2022	3	3	100.00
25/01/2022	4	4	100.00
26/01/2022	13	13	100.00
27/01/2022	8	8	100.00
28/01/2022	10	10	100.00
29/01/2022	25	25	100.00
30/01/2022	6	6	100.00
31/01/2022	161	158	98.14
Total tested	254	248	97.64

*Amostra balun de'it mak konfirma ona ho teste ABI PCR ne'ebé uza Tagpath kits.

Sub-liñajen balun variante Omicron nian hatudu *S gene target failure SGTF*, ne'ebé bele uza hanesan proxy hodi detekta no relata Omicron bainhira sekuensiamentu jenoma la disponível, hanesan sa'ida mak agora daudauk iha Timor-Leste. Hanesan sa'ida mak hatudu iha tabela leten ne'e, husi amostra pozitivu 254 ho SARS-CoV-2, 248 hatudu SGTF (97.6%). Ida ne'e sujere Omicron posivelmente variante predominante iha Timor-Leste.

JESTAUN KAZU COVID-19

Iha loron 27 Janeiro 2022, paciente maternidade ho kazu kma'an na'in-3 baixa iha Sentru Izolamentu Lahane. Dezde Sentru Izolamentu Vera Cruz reutiliza ba tratamentu moras denge, Lahane loke ona hodi halo atendimentu ba kazu kma'an sira ne'ebé iha fator risku. To'o loron 31 Janeiro, paciente maternidade ho kazu kma'an hamutuk na'in-6 mak baixa iha Lahane hodi bele hetan motorizasaun bebeik husi pesoal saúde sira no paciente 5 iha sentru izolamentu seluk. Paciente sira ne'e hotu nafatin iha kondisaun estavel. Kazu pozitivu sira seluk hotu iha autoizolamentu



*Nota, dados ba munisípiu seidauk disponivel daudauk ne'e

Informasaun liu-tan kona-ba facilidade izolamentu no kuarentena sei fó sai iha edisaun *SitRep* tuir mai bainhira avaliasaun ba facilidade sira reeve no delibera hotu ona husi Ministériu Saúde.

IMUNIZASAUN COVID-19

Iha periodu relatóriu ida ne'e (01 Feb. 2022 dadeer), total doze vasina COVID-19 ne'ebé administra 1,237,017 kompostu husi doze dahuluk 672,453 (kobertura 84.2% entre populasaun idade 18 no liu no 20.4% entre populasaun idade 12 to'o <18) no doze daruak 564,575, (kobertura 70.8% entre populasaun idade 18 no liu 16.4% entre populasaun idade 12 to'o <18), doze *booster* 5,505 (kobertura 0.7% entre populasaun idade 18 no liu) maka administra ona iha territóriu Timor-Leste tomak. Detallu husi númeru doze vasina ne'ebé administra ona no kobertura tuir produktu vasina no doze vasina nian bele refere ba Tabela 1 & Figura 1.

Tabela 1: Númeru doze vasina COVID-19 ne'ebé administra ona no kobertura iha Dili no Timor-Leste tuir vasina nia marka no doze sira, atualizada to'o 10:00hrs 01/02/2022

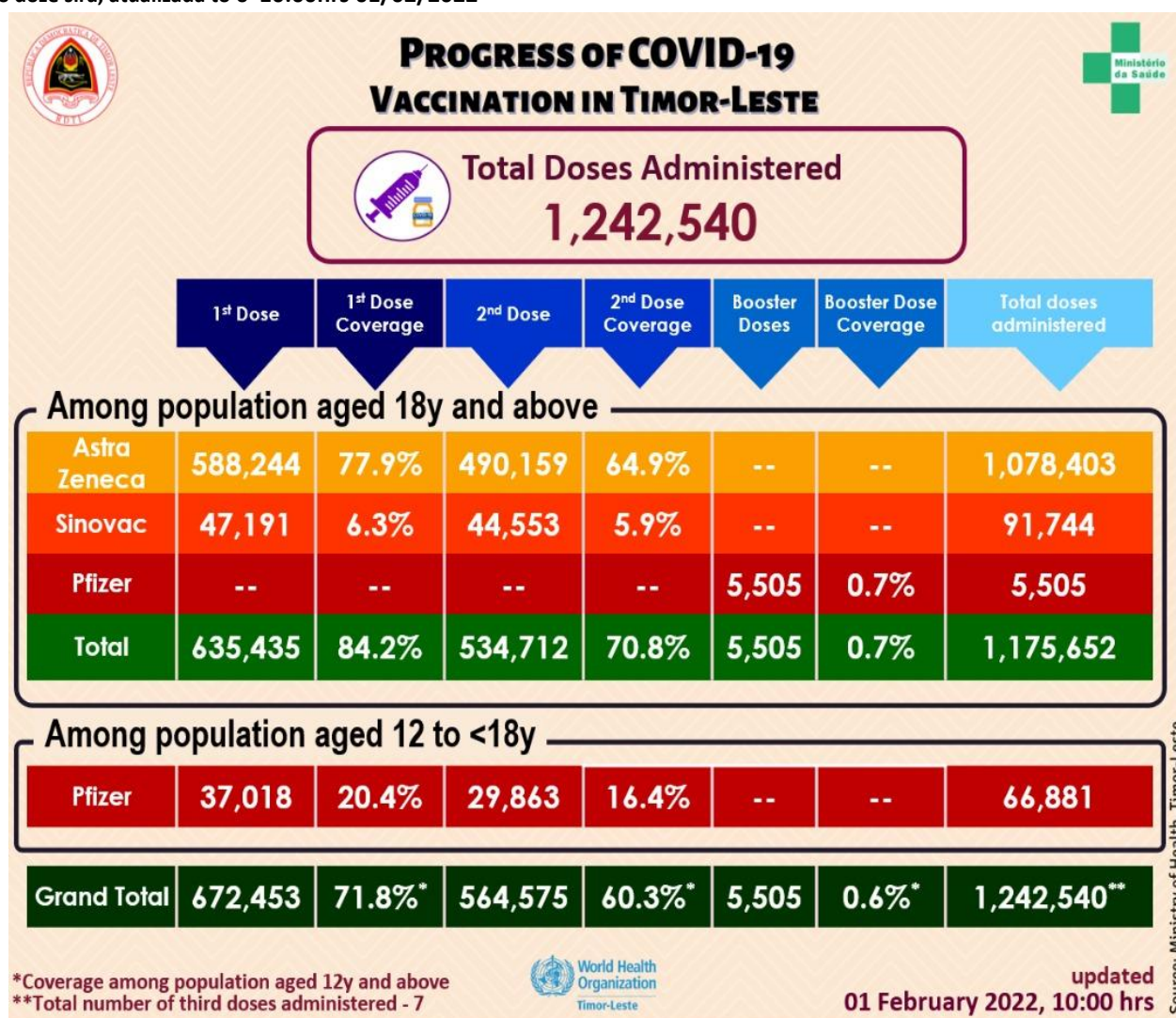


Figura 1: Kobertura vasina COVID-19 ba populasaun tinan 18 ba leten tuir munisípiu iha Timor-Leste atualizada 10:00hrs 01/02/2022

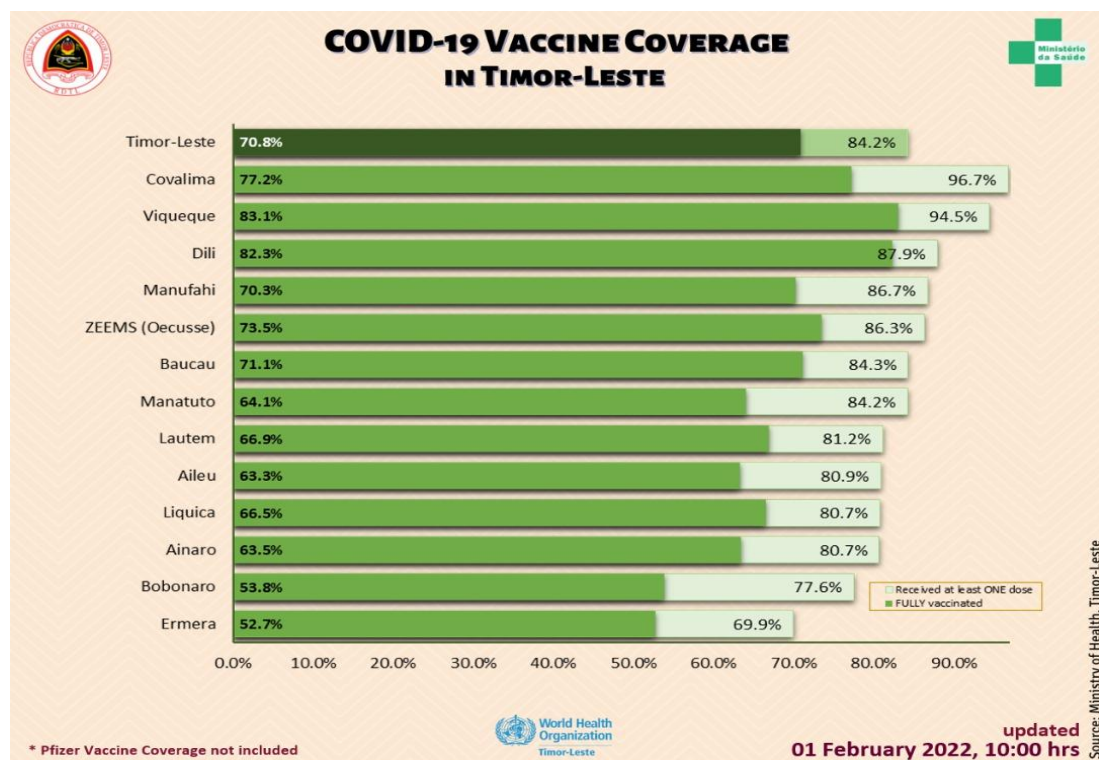


Tabela 2: Númeru ema sira ne'ebé simu vasina ho produktu vasina hotu (AstraZeneca, Sinovac, no Pfizer) no EADI tuir sexu iha kada munisípiu iha Timor-Leste, atualizada to'o 10:00 hrs 01/02/2022

Municipality	Number Vaccinated									AEFI		
	First Dose			Second Dose			Third & Booster			Male	Female	Total
	Male	Female	Total	Male	Female	Total	Male	Female	Total			
Dili	121,560	103,413	224,973	109,295	96,432	205,727	3,452	2,060	5,512	14	26	40
Aileu	12,915	12,351	25,266	9,951	9,824	19,775	-	-	-	1	1	2
Ainaro	14,382	13,970	28,352	11,097	11,198	22,295	-	-	-	0	0	0
Baucau	30,618	31,185	61,803	25,885	26,278	52,163	-	-	-	0	0	0
Bobonaro	22,061	21,944	44,005	15,429	15,122	30,551	-	-	-	4	6	10
Covalima	19,359	19,557	38,916	15,556	15,482	31,038	-	-	-	7	6	13
Ermera	27,274	25,282	52,556	20,401	19,231	39,632	-	-	-	0	0	0
Lautem	14,154	15,405	29,559	11,309	13,039	24,348	-	-	-	2	0	2
Liquica	18,018	18,449	36,467	14,839	15,228	30,067	-	-	-	0	1	1
Manatuto	12,294	11,639	23,933	9,252	8,955	18,207	-	-	-	2	0	2
Manufahi	14,822	14,090	28,912	11,929	11,529	23,458	-	-	-	1	2	3
Viqueque	20,194	21,315	41,509	17,531	18,969	36,500	-	-	-	6	0	6
ZEEMS (Oecusse)	17,569	18,633	36,202	15,005	15,809	30,814	-	-	-	0	0	0
Total (without Dili)	223,660	223,820	447,480	178,184	180,664	358,848	-	-	-	23	16	39
Total (Timor-Leste)	345,220	327,233	672,453	287,479	277,096	564,575	3,452	2,060	5,512	37	42	79

Figura 2: Progresu semanal imunitasaun COVID-19 iha Timor-Leste atualizada to'o 10:00 hrs 30/01/2022

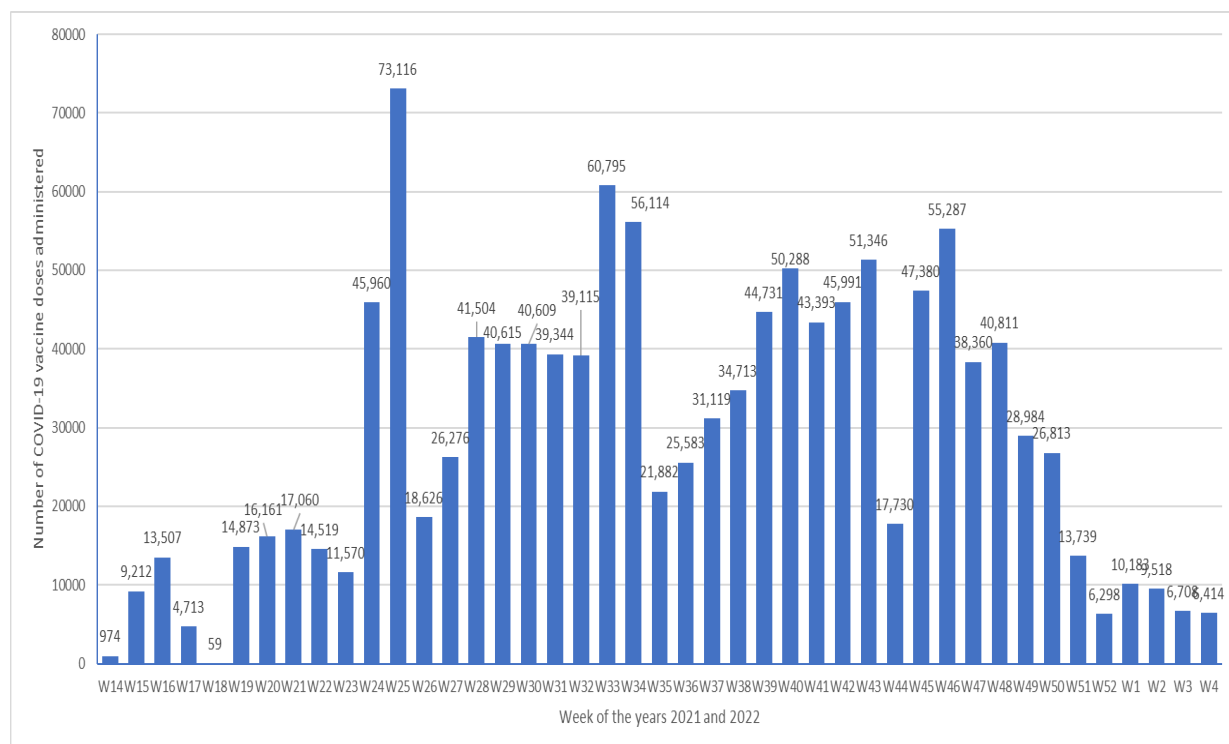


Tabela 3: Númeru populasaun idade 12 to'o <18 no liu* ne'ebé simu vasina Pfizer no kobertura tuir munisípiu iha Timor-Leste, atualizada to'o 10:00hrs 01/02/2022

Municipality	12to <18y Population	First Dose				Second Dose			
		12 to <18y Students	12 to <18y Non-students	Total	Coverage	12 to <18y Students	12 to <18y Non-students	Total	Coverage
Dili	41,822	36,975	43	37,018	88.5%	29,845	18	29,863	71.4%
Aileu	7,770	-	-	-	0.0%	-	-	-	0.0%
Ainaro	10,253	-	-	-	0.0%	-	-	-	0.0%
Baucau	18,189	-	-	-	0.0%	-	-	-	0.0%
Bobonaro	14,466	-	-	-	0.0%	-	-	-	0.0%
Covalima	9,729	-	-	-	0.0%	-	-	-	0.0%
Ermera	20,564	-	-	-	0.0%	-	-	-	0.0%
Lautem	10,447	-	-	-	0.0%	-	-	-	0.0%
Liquica	11,137	-	-	-	0.0%	-	-	-	0.0%
Manatuto	7,108	-	-	-	0.0%	-	-	-	0.0%
Manufahi	8,267	-	-	-	0.0%	-	-	-	0.0%
Viqueque	11,490	-	-	-	0.0%	-	-	-	0.0%
ZEEMS (Oecusse)	10,565	-	-	-	0.0%	-	-	-	0.0%
Total (without Dili)	139,985	-	-	-	0.0%	-	-	-	0.0%
Total (Timor-Leste)	181,807	36,975	43	37,018	20.4%	29,845	18	29,863	16.4%

*Based on 2021 population projections

Tabela 4: Númeru ema individuu entre populasaun elijivel sira (tinan 18 no liu*) ne'ebé vasinadu ona ho vasina COVID-19 AstraZeneca no Sinovac iha Timor-Leste no kobertura atualizada to'o 10:00hrs 01/02/2022

Municipality	Eligible Population			Number vaccinated & Coverage																	
	High Risk Groups (20% Pop.)	18-59y no comorbidity (80% Pop.)	Total	First Dose						Second Dose						Booster Dose					
				High Risk Groups (20% Pop.)	Coverage	18-59y no comorbidity (80% Pop.)	Coverage	Total	Coverage	High Risk Groups (20% Pop.)	Coverage	18-59y no comorbidity (80% Pop.)	Coverage	Total	Coverage	High Risk Groups (20% Pop.)	Coverage	18-59y no comorbidity (80% Pop.)	Coverage	Total	Coverage
Dili	29,980	183,822	213,802	53,651	179.0%	134,304	73.1%	187,955	87.9%	34,437	114.9%	141,427	76.9%	175,864	82.3%	3055	1.4%	2450	1.1%	5505	2.6%
Alieu	6,292	24,943	31,235	12,966	206.1%	12,300	49.3%	25,266	80.9%	10,725	170.5%	9,050	36.3%	19775	63.3%	0	0.0%	0	0.0%	0	0.0%
Ainaro	7,410	27,726	35,136	6,724	90.7%	21,628	78.0%	28,352	80.7%	5,054	68.2%	17,241	62.2%	22295	63.5%	0	0.0%	0	0.0%	0	0.0%
Baucau	18,141	55,175	73,316	17,512	96.5%	44,291	80.3%	61,803	84.3%	13,423	74.0%	38,740	70.2%	52163	71.1%	0	0.0%	0	0.0%	0	0.0%
Bobonaro	13,268	43,476	56,744	11,079	83.5%	32,926	75.7%	44,005	77.6%	7,386	55.7%	23,165	53.3%	30551	53.8%	0	0.0%	0	0.0%	0	0.0%
Covallima	8,725	31,503	40,228	10,211	117.0%	28,705	91.1%	38,916	96.7%	7,308	83.8%	23,730	75.3%	31038	77.2%	0	0.0%	0	0.0%	0	0.0%
Ermera	14,350	60,793	75,143	10,979	76.5%	41,577	68.4%	52,556	69.9%	6,504	45.7%	33,068	54.4%	39632	52.7%	0	0.0%	0	0.0%	0	0.0%
Lautem	8,455	27,963	36,418	8,492	100.4%	21,067	75.3%	29,559	81.2%	6,901	81.6%	17,447	62.4%	24348	66.9%	0	0.0%	0	0.0%	0	0.0%
Liquica	9,588	35,597	45,185	9,183	95.8%	27,284	76.6%	36,467	80.7%	7,050	73.5%	23,017	64.7%	30067	66.5%	0	0.0%	0	0.0%	0	0.0%
Manatuto	6,701	21,718	28,419	6,868	102.5%	17,085	78.6%	23,933	84.2%	4,756	71.0%	13,451	61.9%	18207	64.1%	0	0.0%	0	0.0%	0	0.0%
Manufahi	7,595	25,766	33,361	9,696	127.7%	19,216	74.6%	28,912	86.7%	9,444	124.3%	14,014	54.4%	23458	70.3%	0	0.0%	0	0.0%	0	0.0%
Viqueque	11,034	32,905	43,939	12,541	113.7%	28,968	88.0%	41,509	94.5%	10,540	95.5%	25,960	78.9%	36500	83.1%	0	0.0%	0	0.0%	0	0.0%
ZEEMS (Dicasse)	9,408	32,534	41,942	11,628	123.6%	24,574	75.5%	36,202	86.3%	8,107	86.2%	22,707	69.8%	30,814	73.5%	0	0.0%	0	0.0%	0	0.0%
Total (without Dili)	120,967	420,098	541,065	127,879	105.7%	319,601	76.1%	447,480	82.7%	97,258	80.4%	261,590	62.3%	358,848	66.3%	0	0.0%	0	0.0%	0	0.0%
Total (Timor-Leste)	150,947	603,920	754,867	181,530	120.3%	453,905	75.16%	635,435	84.2%	131,695	87.2%	403,017	66.7%	534,712	70.8%	3055	0.4%	2450	0.3%	5505	0.7%

*Based on 2021 population projections. Population with Comorbidity 12.5% among 10-59y based on 2016 DHS data

High Risk Groups (20% of the population) - Healthcare staff, other front line staff, aged 60y and above, and 18-59y with comorbidity

18-59y with no comorbidity (80% of the population)

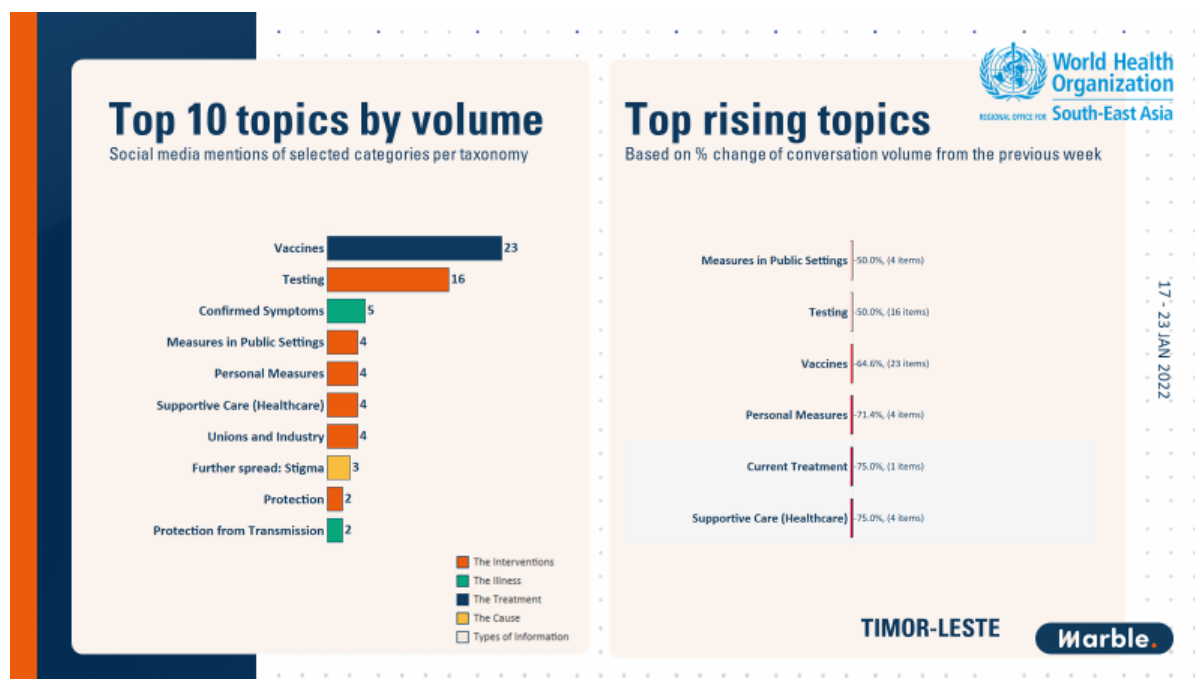
Total Vaccinated (all doses) 1,175,652 (Total No. of third Doses - 7)

ANALIZE SITUASAUN

- Númeru kazu insidente aumenta substansialmente durante príodu atual relatóriu. Maioria husi kazu sira ne'e hotu mai husi estudante ensinu sekundáriu sira iha Dili ne'ebé teste tanba sai hanesan kontaktu besik ba kazu konfirmadu balun. Maioria husi kazu sira ne'e hotu simu ona vasina kompletu no la hatudu sintomas ka sinal ruma to'o agora. Maioria husi kazu sira ne'e hatudu SGTF, sujere inísiu husi onda transmisaun, kauza predominantemente husi Omicron, hanesan sa'ida mak hatudu ona husi nasaun barak iha rejiaun ne'e.
- Ho númeru kazu ne'ebé tuir expektativa sei aumenta maka'as, importante ba halo esforsu ba halais preparasaun kapasitasaun ba kazu grave no krítiku sira.
- Ho kuantidade vasina mRNA ne'ebé to'o ona, hala'o hela esforsu hodi halais vasinasaun ba adolescentes iha Timor-Leste laran tomak.

PREOKUPASAUN ÁTUAL

Monitorizasaun ba rede sosial sira relasiona ho COVID-19 iha Timor-Leste



Sumáriu:

- Tópiku ne'ebé ema ko'alia barak liu mak **Vasina (mensiona dala-23)**
 - Maske ida ne'e sai hanesan tópiku ne'ebé boot liu, konversa hirak ne'e la hamosu diskusaun nível aas. Barak ko'alia kona-ba atividade organizasaun ONU sira nian iha rai laran.
 - [UN Timor Leste](#) obtain envolvimentu balun bainhira deskreve oinsa Timor-Leste distribui ona vasina COVID-19 hamutuk doze token 1.23 (envolvimentu nain-7).

- [UNICEF Timor-Leste](#) deskreve oinsa mobilizasaun sosial destaka ona iha munisípiu sira hotu hodi ajuda profesional saúde sira hodi aumenta konsientizasaun kona-ba COVID-19, prevensaun denge, kompreensaun vasina COVID-19, nutrisaun no imunizasaun rotina (envolvimentu nain-4).
- [WHO Timor Leste](#) halo komentáriu kona-ba importánsia husi simu vasina no simu tuir doze vasina ne'ebé rekomenda ona (envolvimentu nain-5).

Fontes: WHO SEARO. SEAR COVID-19 Infodemic Digital Intelligence, 17-23 Jan. 2022

REKURSU NE'EBÉ DISPONIVEL

- [Ba públiku jerál no profesionál saúde sira kona-ba prevensaun, tratamentu, no vasina, nsst.](#)
- [Rekomendasaun OMS ba Desizaun Relasiona ho COVID-19](#)
- Kursu gratuita iha Tetum – [OpenWHO.org](#)

KONTAKTU MÉDIA NO INFORMASAUN KONA-BA COVID-19

- Ministériu Saúde estabelese ona númeru *hotline* – 119 – ba COVID-19 ne'ebé maka ema hotu-hotu bele kontaktu hodi hetan informasaun relasiona ho COVID-19
- Alende ne'e, [Páijina Facebook MS](#) nian fornese atualizasaun loloos kona-ba desenvolvimentu COVID-19 iha rai laran
- OMS Timor-Leste liuhusi nia [Páijina Facebook](#) no [Twitter](#) mós disemina informasaun kona-ba medida preventiva, pergunta no resposta, *myth-buster* no atualizasaun ikus kona-ba COVID-19 iha mundu tomak no iha rai laran. Ba media no pedidu ba entrevista bele manda ba hasane@who.int ka wcotimorleste@who.int