

Moras virus Corona 2019 (COVID-19)

Relatóriu Situasaun – 138

Timor-Leste



World Health
Organization

Timor-Leste

*Dadus relata to'o loron 8 Feveireiru 2022

SITUASAUN IHA NÚMERU

TIMOR-LESTE



Kumulativu
20,748 (643)



Rekuperadu (foun)
19,790 (44)



Kazu ativu
836



Óbitu (foun)
122 (0)

PROGRESU IMUNIZASAUN COVID-19



Doze 1^a – **673,195**
Kobertura – **84.3%****



Doze 2^a – **565,926**
Kobertura – **71.0%****

* Bazeia ba dadus ne'ebé pública husi [Ministerio da Saúde](#)

** Ba populasaun adultu tinan 18 ba leten

GLÓBÁL



Kazu
394,381,395



Óbitu
5,735,179

PROGRESU IMUNIZASAUN COVID-19



Doze vasina
10,045,314,700

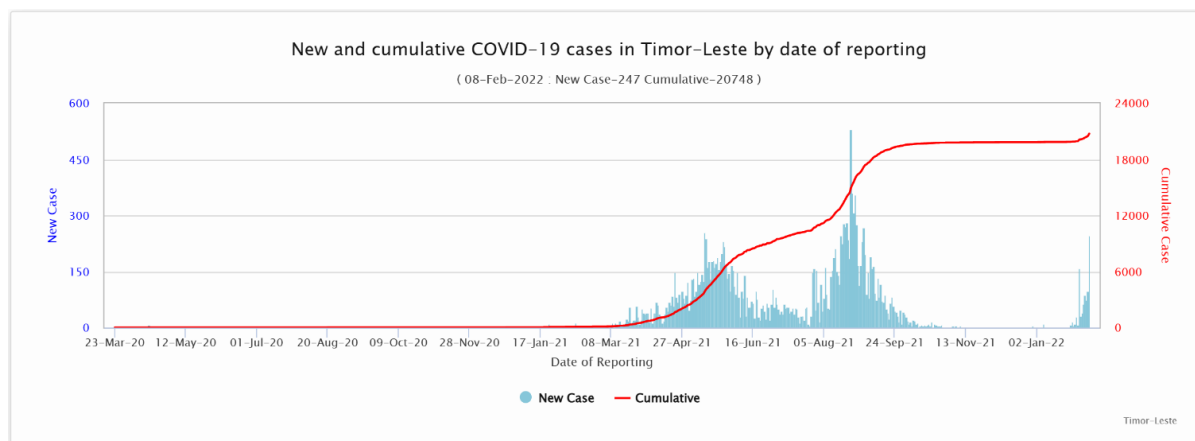
SUMÁRIU

- Dezde edisaun ikus relatóriu situasaun, Ministeriu Saúde relata hamutuk **643** kazu foun COVID-19, kazu rekuperadu **44** no kazu óbitu **0**. Número kazu foun COVID-19 aumenta maka'as liu dezde períodu relatóriu ikus.
- OMS entrega ona Malathion hamutuk litru 200, Abate kilograma 650 no 50,000 material Informasaun, Edukasaun no Komunikaun (IEC) nian ba Ministériu Saúde (MS) hodi kombate moras denge iha Timor-Leste. OMS hala'o hela treinamentu kona-ba Jestaun Klíniku ba moras denge ba médiku no enfermeiru sira husi Hospital Nacional Guido Valadares (HNGV) no Sentruk Saúde Komunitáriu sira.
- Hanesan parte ida husi apoiu tékniku ba Ministériu Saúde liu husi prokuramentu ba suprimentu médiku esensial sira hodi responde ba COVID-19 no mos ba nesesidade relaciona ho saúde sira seluk, UNDP continua fornese suprimentu médiku no aimoruk esensial sira ba SAMES. Iha loron 4 Feveireiru 2022, karegamentu ho aimoruk esensial to'o Dili no entrega ona ba SAMES. Sasan hirak ne'e to'o iha konteiner ho naruk metru 6, kompostu husi aimoruk esensial sira.

ATUALIZASAUN EPIDEMIOLOGIA

1. Kazu COVID-19 kumulativu no kazu foun, 23 Marsu 2022 – 8 Feveiru 2022

Hanesan hatudu iha gráfiku epi tuir mai ne'e, númeru kazu insidente sa'e maka'as liu iha períodu relatóriu tolu tutuir malu ne'e hafoin numeru kazu ne'ebé ki'ik iha semana hirak nia laran, ida ne'e signifika ita iha ona onda transmisaun datoluk iha semana hirak tuir mai ne'e.



2. Distribuisaun kazu no kazu óbitu tuir munisípiu

Distribusaun kazu foun ne'ebé relata, kazu rekuperadu no kazu ativu tuir munisípiu, to'o loron 8 Feveiru 2022

Munisípiu	Kazu foun (2-8 Fev. 2022)	Loron 7 - mudansa % (kazu)*	Kazu kumulativu	Kazu rekuperadu (2-8 Fev. 2022)	Kazu rekuperadu kumulativu	Kazu óbitu foun (2 – 8 Fev. 2022)	Kazu óbitu kumulativu	Kazu ativu (8 Fev. 2022)
Aileu	0	0	126	0	125	0	1	0
Ainaro	0	0	227	0	224	0	3	0
Baucau	4	0	1546	0	1535	0	7	4
Bobonaro	10	900	625	1	606	0	9	10
Covalima	1	100	791	0	787	0	3	1
Dili	607	162	14609	36	13722	0	81	806
Ermera	1	100	1114	0	1111	0	2	1
Lautem	0	-100	185	0	179	0	5	1
Liquica	0	0	125	0	124	0	1	0
Manatuto	2	100	205	0	201	0	2	2
Manufahi	0	0	265	0	265	0	0	0
RAEOA	18	100	411	7	397	0	3	11
Viqueque	0	0	519	0	514	0	5	0
TOTAL	643	175	20748	44	19790	0	122	836

*Mudansa kazu COVID-19 kompara ho loron 7 ikus

- Total kazu foun hamutuk 643 ne'ebé relata iha períodu relatóriu (2-8 Feb. 2022), kompara ho kazu 234 ne'ebé relata iha periodu relatóriu ikus (25 Jan. – 1 Feb. 2022) ho aumenta 175%. Maioria husi kazu sira ne'e hotu detekta iha Dili, no seluk husi munisípiu Oecusse, Bobonaro, Manatutu, Ermera no Covalima

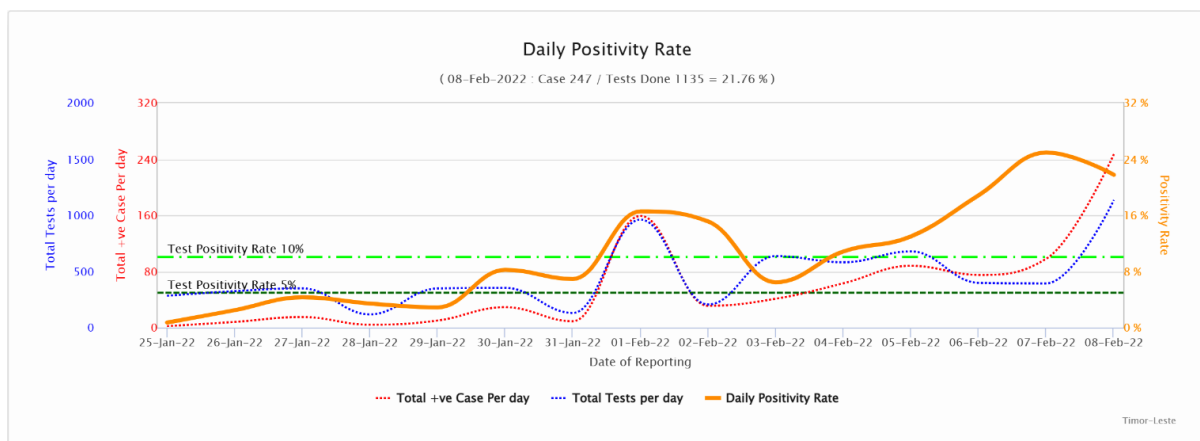
Bainhira haree ba kazu sira ne'ebé relata ona, hatudu katak agora kazu barak mak detekta la ho ligasaun epidemiológiku, kompara ho ida ne'e kazu barak mak detekta husi pasajeiru internasional no kontaktu besik sira iha semana rua kotuk nia laran, ida ne'e hatudu katak daudauk ne'e aumenta transmisaun komunitária.

- Laiha kazu óbitu ida maka relata iha Timor-Leste durante periodu relatóriu ida ne'e, ida ne'e hanesan semana da-15 laiha kazu óbitu.

- Númeru kazu ativu agora to'o loron 8 Fevereiro 2022 hamutuk na'in-836.

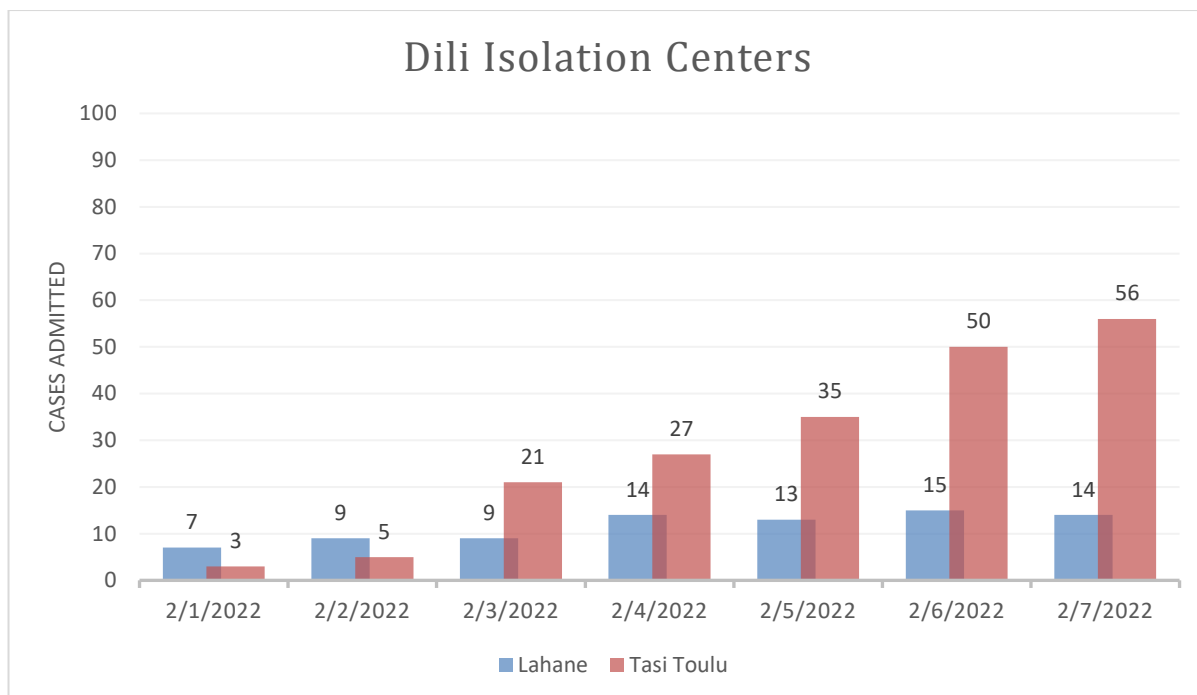
3. Teste diáriu, taxa positivu no taxa teste positividade

- Durante data relatóriu atuál ida ne'e husi loron 2 – 8 Feb. 2022, halo ona teste ba amostra 4,026 kompara ho loron 7 liu ba teste ba amostra hamutuk 2,582.
- Taxa teste positividade husi periodu relatóriu ida ne'e ho médiu 16.0%, kompara ho 9.1% hosi periodu relatóriu liuba. Figura tuir mai ne'e hatudu proporsaun teste, kazu no positividade



JESTAUN KAZU COVID-19

Iha loron 27 Janeiro 2022, Lahane loke hikas fali hodi admite paciente maternidade na'in-3 ho sintomas kma'an. Dezde Sentru Izolamentu Vera Cruz reutiliza ba tratamentu moras denge, Lahane loke hodi halo atendimento ba kazu kma'an sira ne'ebé iha fator risku no sira ne'ebé ho kazu krítiku. Iha loron 2 Fevereiro, aumenta tan paciente ne'ebé admite iha Lahane hodi halo monitorizasaun ba sira nia kondisaun.



Daudauk ne'e % okupante atual ba kama iha sentru izolamentu Lahane hamutuk 63%.

Daudauk ne'e % okupante atual ba kama iha sentru izolamentu Tasi Tolu hamutuk 24%.

IMUNIZASAUN COVID-19

Iha periodu relatóriu ida ne'e (08 Feb. 2022 dadeer), total doze vasina COVID-19 ne'ebé administra 1,245,958 kompostu husi doze dahuluk 673,195 (kobertura 84.3% entre populaasaun idade 18 no liu no 20.4% entre populaasaun idade 12 to'o <18) no doze daruak 565,926, (kobertura 71.0% entre populaasaun idade 18 no liu 16.5% entre populaasaun idade 12 to'o <18), doze *booster* 6,830 (kobertura 0.9% entre populaasaun idade 18 no liu) maka administra ona iha territóriu Timor-Leste tomak. Detallu husi númeru doze vasina ne'ebé administra ona no kobertura tuir produktu vasina no doze vasina nian bele refere ba Tabela 1 & Figura 1.

Tabela 1: Númeru doze vasina COVID-19 ne'ebé administra ona no kobertura iha Dili no Timor-Leste tuir vasina nia marka no doze sira, atualizada to'o 10:00hrs 08/02/2022

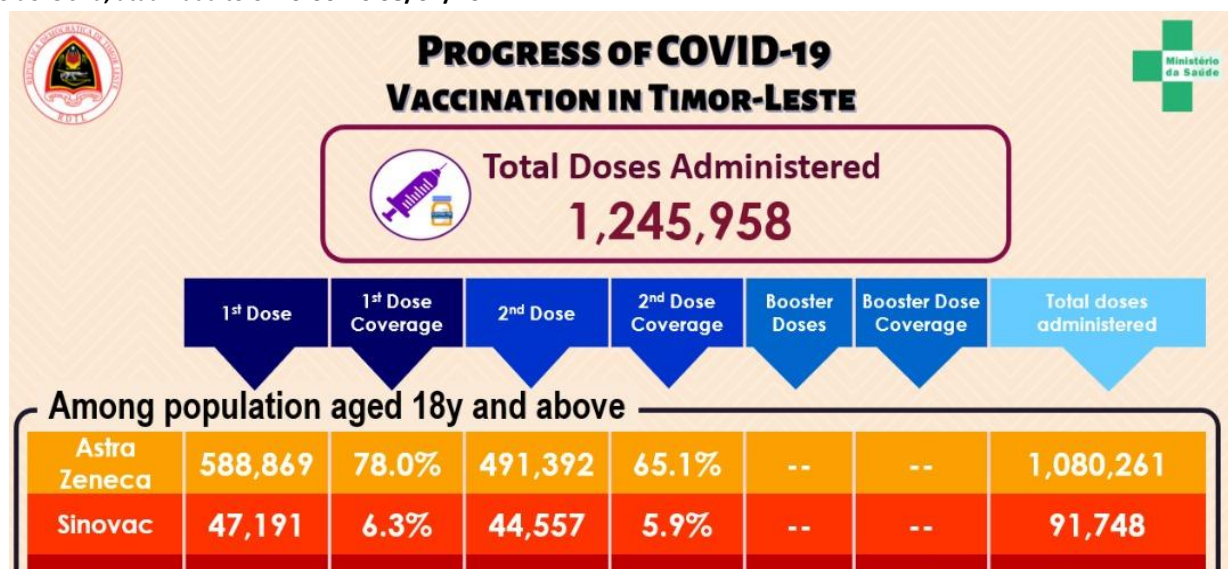


Figura 1: Kobertura vasina COVID-19 ba populasaun tinan 18 ba leten tuir munisípiu iha Timor-Leste atualizada 10:00hrs 08/02/2022

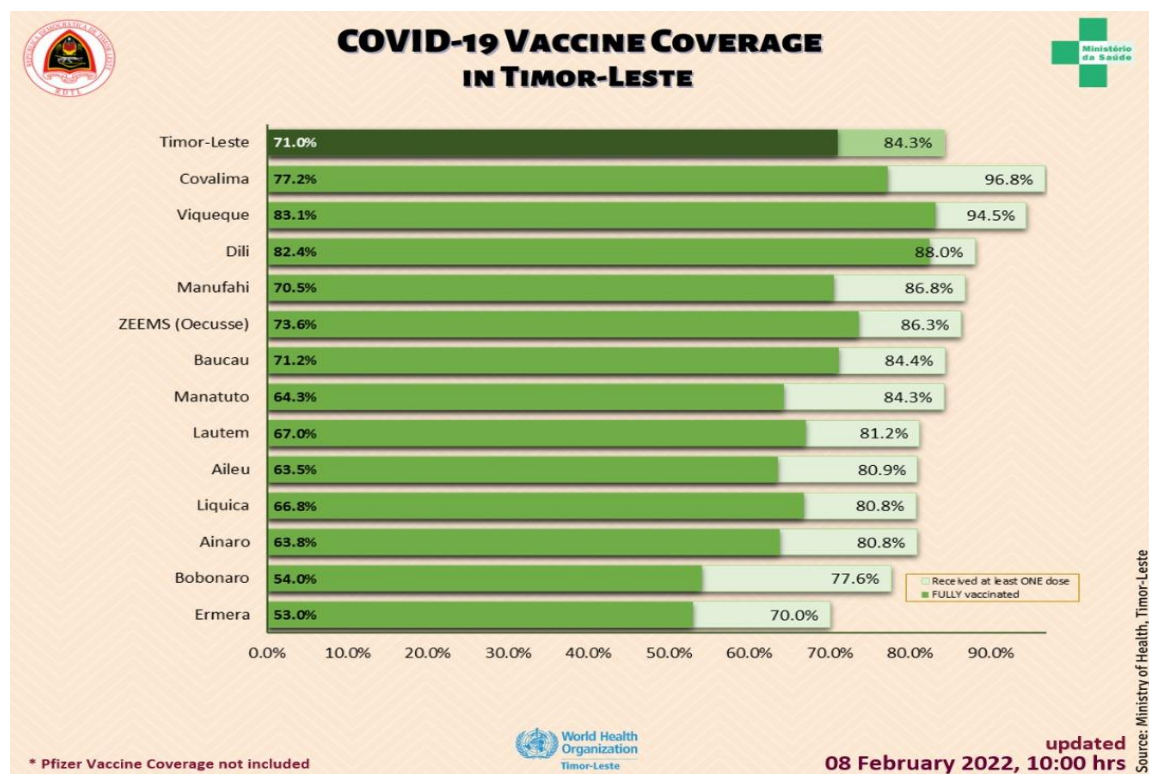


Tabela 2: Númeru ema sira ne'ebé simu vasina ho produktu vasina hotu (AstraZeneca, Sinovac, no Pfizer) no EADI tuir sexu iha kada munisípiu iha Timor-Leste, atualizada to'o 10:00 hrs 08/02/2022

Municipality	Number Vaccinated									AEFI		
	First Dose			Second Dose			Third & Booster			Male	Female	Total
	Male	Female	Total	Male	Female	Total	Male	Female	Total			
Dili	121,723	103,629	225,352	109,482	96,717	206,199	4,193	2,440	6,633	14	26	40
Aileu	12,923	12,360	25,283	9,971	9,875	19,846	-	-	-	1	1	2
Ainaro	14,406	13,998	28,404	11,154	11,278	22,432	-	-	-	0	0	0
Baucau	30,629	31,215	61,844	25,824	26,345	52,169	175	29	204	0	0	0
Bobonaro	22,084	21,968	44,052	15,469	15,198	30,667	-	-	-	4	6	10
Covalima	19,367	19,561	38,928	15,569	15,491	31,060	-	-	-	7	6	13
Ermera	27,312	25,312	52,624	20,472	19,328	39,800	-	-	-	0	0	0
Lautem	14,157	15,411	29,568	11,322	13,066	24,388	-	-	-	2	0	2
Liquica	18,038	18,465	36,503	14,884	15,307	30,191	-	-	-	0	1	1
Manatuto	12,299	11,653	23,952	9,266	9,000	18,266	-	-	-	2	0	2
Manufahi	14,848	14,112	28,960	11,959	11,566	23,525	-	-	-	1	2	3
Viqueque	20,197	21,319	41,516	17,543	18,986	36,529	-	-	-	6	0	6
ZEEMS (Oecusse)	17,571	18,638	36,209	15,021	15,833	30,854	-	-	-	0	0	0
Total (without Dili)	223,831	224,012	447,843	178,454	181,273	359,727	175	29	204	23	16	39
Total (Timor-Leste)	345,554	327,641	673,195	287,936	277,990	565,926	4,368	2,469	6,837	37	42	79

Figura 2: Progresu semanal imunizasaun COVID-19 iha Timor-Leste atualizada to'o 10:00 hrs 06/02/2022

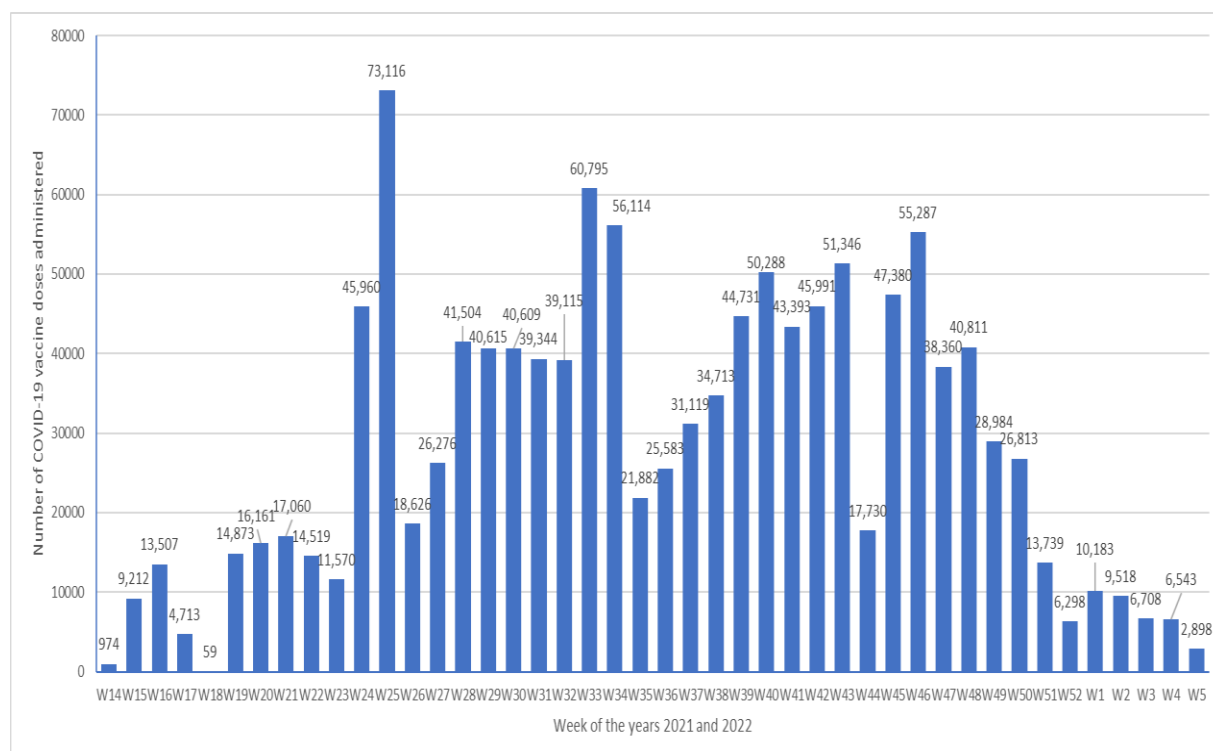


Tabela 3: Númeru populasaun idade 12 to'o <18 no liu* ne'ebé simu vasina Pfizer no kobertura tuir munisípiu iha Timor-Leste, atualizada to'o 10:00hrs 08/02/2022

Municipality	12to <18y Population	First Dose				Second Dose			
		12 to <18y Students	12 to <18y Non-students	Total	Coverage	12 to <18y Students	12 to <18y Non-students	Total	Coverage
Dili	41,822	37,092	43	37,135	88.8%	29,957	20	29,977	71.7%
Aileu	7,770	-	-	-	0.0%	-	-	-	0.0%
Ainaro	10,253	-	-	-	0.0%	-	-	-	0.0%
Baucau	18,189	-	-	-	0.0%	-	-	-	0.0%
Bobonaro	14,466	-	-	-	0.0%	-	-	-	0.0%
Covalima	9,729	-	-	-	0.0%	-	-	-	0.0%
Ermera	20,564	-	-	-	0.0%	-	-	-	0.0%
Lautem	10,447	-	-	-	0.0%	-	-	-	0.0%
Liquica	11,137	-	-	-	0.0%	-	-	-	0.0%
Manatuto	7,108	-	-	-	0.0%	-	-	-	0.0%
Manufahi	8,267	-	-	-	0.0%	-	-	-	0.0%
Viqueque	11,490	-	-	-	0.0%	-	-	-	0.0%
ZEEMS (Oecusse)	10,565	-	-	-	0.0%	-	-	-	0.0%
Total (without Dili)	139,985	-	-	-	0.0%	-	-	-	0.0%
Total (Timor-Leste)	181,807	37,092	43	37,135	20.4%	29,957	20	29,977	16.5%

*Based on 2021 population projections

Total Vaccinated (both doses) 67,112

Tabela 4: Númeru ema individuu entre populasaun elijivel sira (tinan 18 no liu*) ne'ebé vasinadu ona ho vasina COVID-19 AstraZeneca no Sinovac iha Timor-Leste no kobertura atualizada to'o 10:00hrs 08/02/2022

Municipality	Eligible Population			Number vaccinated & Coverage																	
	High Risk Groups (20% Pop.)	18-59y no comorbidity (80% Pop.)	Total	First Dose						Second Dose						Booster Dose					
				High Risk Groups (20% Pop.)	Coverage	18-59y no comorbidity (80% Pop.)	Coverage	Total	Coverage	High Risk Groups (20% Pop.)	Coverage	18-59y no comorbidity (80% Pop.)	Coverage	Total	Coverage	High Risk Groups (20% Pop.)	Coverage	18-59y no comorbidity (80% Pop.)	Coverage	Total	Coverage
Dili	29,980	183,822	213,802	53,660	179.0%	134,557	73.2%	188,217	88.0%	34,454	114.9%	141,768	77.1%	176,222	82.4%	3176	1.5%	3450	1.6%	6626	3.1%
Aileu	6,292	24,943	31,235	12,977	206.2%	12,306	49.3%	25,283	80.9%	10,776	171.3%	9,070	36.4%	19846	63.5%	0	0.0%	0	0.0%	0	0.0%
Ainaro	7,410	27,726	35,136	6,728	90.8%	21,676	78.2%	28,404	80.8%	5,080	68.6%	17,352	62.6%	22432	63.8%	0	0.0%	0	0.0%	0	0.0%
Baucau	18,141	55,175	73,316	17,517	96.6%	44,327	80.3%	61,844	84.4%	13,337	73.3%	38,832	70.4%	52269	71.2%	200	0.3%	4	0.0%	204	0.3%
Bobonaro	13,268	43,476	56,744	11,080	83.5%	32,972	75.8%	44,052	77.6%	7,398	55.8%	23,269	53.5%	30667	54.0%	0	0.0%	0	0.0%	0	0.0%
Covalima	8,725	31,503	40,228	10,211	117.0%	28,717	91.2%	38,928	96.8%	7,308	83.8%	23,752	75.4%	31060	77.2%	0	0.0%	0	0.0%	0	0.0%
Ermera	14,350	60,793	75,143	10,993	76.6%	41,631	68.5%	52,624	70.0%	6,639	46.4%	33,141	54.5%	39800	53.0%	0	0.0%	0	0.0%	0	0.0%
Lautem	8,455	27,963	36,418	8,492	100.4%	21,076	75.4%	29,568	81.2%	6,905	81.7%	17,483	62.5%	24388	67.0%	0	0.0%	0	0.0%	0	0.0%
Liquica	9,588	35,597	45,185	9,187	95.8%	27,316	76.7%	36,503	80.8%	7,072	73.8%	23,119	64.9%	30191	66.8%	0	0.0%	0	0.0%	0	0.0%
Manatuto	6,701	21,718	28,419	6,868	102.5%	17,084	78.7%	23,952	84.3%	4,767	71.1%	13,489	62.2%	18266	64.3%	0	0.0%	0	0.0%	0	0.0%
Manufahi	7,595	25,766	33,361	9,703	127.6%	19,257	74.7%	28,960	86.6%	9,452	124.5%	14,073	54.6%	23525	70.5%	0	0.0%	0	0.0%	0	0.0%
Viqueque	11,034	32,905	43,939	12,542	113.7%	28,974	88.1%	41,516	94.5%	10,548	95.6%	25,981	79.0%	36529	83.1%	0	0.0%	0	0.0%	0	0.0%
ZEEMS (Decusse)	9,408	32,534	41,942	11,630	123.6%	24,579	75.5%	36,209	86.3%	8,116	86.3%	22,738	69.9%	30,854	73.6%	0	0.0%	0	0.0%	0	0.0%
Total (without Dili)	120,967	420,098	541,065	127,928	105.8%	319,915	76.7%	447,843	82.8%	97,418	80.5%	262,309	62.4%	359,727	66.5%	200	0.0%	4	0.0%	204	0.0%
Total (Timor Leste)	150,947	601,920	754,867	181,588	120.3%	454,472	75.25%	636,060	84.3%	131,872	87.4%	404,077	66.9%	535,949	71.0%	3376	0.4%	3454	0.5%	6830	0.9%

*Based on 2021 population projections. Population with Comorbidity 12.5% among 18-59y based on 2016 DHS data

High Risk Groups (20% of the population) - Healthcare staff, other front line staff, aged 65y and above, and 18-59y with comorbidity

18-59y with no comorbidity (80% of the population)

Total Vaccinated (all doses) 1,178,839 (Total No. of third Doses - 7)

ANALIZE SITUASAUN

- Hatudu momoos ona katak ita tama ona ba onda datolu transmisaun COVID-19 nian iha Timor-Leste. Onda ida ne'e prinsipalmente mosu tanba variante Omicron. Tuir expektasaun, númeru kazu ne'ebé boot sei detekta no relata, maibe barak liu mak sei la detekta no relata tanba barak mak asintómatiku ka lakohi atu halo teste iha facilidade saúde sira.
- Tuir relatóriu husi nasaun seluk, prevee ona katak kazu barak liu mak kma'an ka asintómatiku. Maibe, tanba númeru infesaun ne'ebé boot iha tempu badak nia laran iha semana hirak tuir mai ne'e nia laran, ita tenke prepara an ho di'ak tanba haree bai ta nia kapasidade sistéma saúde ne'ebé limitadu, liu liu bainhira tau matan ba kazu todan no krítiku ne'ebé posivelmente nia númeru sei susar atu kontrola.
- Iha tempu hanesan, ita tenke kontinua aselera ita nia esforsu ba vijilánsia no teste, rastreamentu kontaktu, kuarentena no kazu izolamentu sira, no mos númeru vasinasaun iha área rural sira.

PREOKUPASAUN ÁTUAL

Atualizasaun situasaun Omicron iha rejiaun Sudeste Aziátiku

- Variante Omicron kontinua aumenta insidénsia kazu foun COVID-19 nian iha mundu tomak, ho kuaze substitui variant Delta husi variante Omicron. Iha loron 2 Feveiru 2022, nasaun sanulu iha OMS nia rejiaun SA detekta ona kazu COVID-19 variante Omicron, no nasaun 9 notifika ona deteksaun dahuluk ba OMS liu husi Pontu Fokal IHR Nasional (IHR NFP).
- Daudauk ne'e Omicron iha sub-liñajen 4, mak hanaran BA.1, BA.1.1, BA.2 no BA.3, ho sira-nia liñajen parental hanaran B.1.529. BA.2 ne'ebé hamutuk ho BA.1 iha mutasaun barak, maibe diferensia prinsipal inklui *Spike protein*, BA.2 laiha delesaun *Spike* 69-70 asociadu ho *S-gene target failure*. Tuir sa'ida mak hatudu, BA.2 iha vantajen kresimentu ida liu BA.1 no substitui BA.1 iha nasaun barak. Iha rejiaun Sudeste Aziátiku, pelumenus Bangladesh, índia, Indonézia, Nepal, Sri Lanka no Tailândia detekta ona variante BA.2 (tuir dadus ne'ebé hatama ona ba GISAIID), ne'ebé hatudu BA.2 sai sub-liñajen predominante liu iha índia no Nepal.
- Kompara ho variante Delta, gravidade no mortalidade asociadu ho Omicron significativamente ki'ik liu, inklui iha labarik sira. Ho ida ne'e rezulta, tuir saida mak observa ona, disosiasaun entre kazu no kazu moras todan/mate (númeru kazu hospitalizasaun ne'ebé ki'ik kompara ho númeru kazu ne'ebé aumenta maka'as), inklui iha nasaun sira iha OMS rejiaun Sudeste Aziátiku (refere ba figura iha SEARO *Situation Report #3*, 28 Janeiro 2022). Daudauk ne'e laiha indikasaun ba diferensia iha severidade entre kazu COVID-19 kauza husi variante Omicron sub-liñajen BA.1 no BA.2.

Fontes: WHO SEARO COVID-19 Situation Report, #4, 2022

REKURSU NE'EBÉ DISPONIVEL

- [Ba públiku jerál no profesionál saúde sira kona-ba prevensaun, tratamentu, no vasina, nsst.](#)
- [Rekomendasaun OMS ba Desizaun Relasiona ho COVID-19](#)
- Kursu gratuita iha Tetum – [OpenWHO.org](#)

KONTAKTU MÉDIA NO INFORMASAUN KONA-BA COVID-19

- Ministériu Saúde estabelese ona número *hotline* – 119 – ba COVID-19 ne'ebé maka ema hotu-hotu bele kontaktu hodi hetan informasaun relasiona ho COVID-19
- Alende ne'e, [Pájina Facebook MS](#) nian fornese atualizasaun loloos kona-ba desenvolvimentu COVID-19 iha rai laran
- OMS Timor-Leste liuhusi nia [Pájina Facebook](#) no [Twitter](#) mós disemina informasaun kona-ba medida preventiva, pergunta no resposta, *myth-buster* no atualizasaun ikus kona-ba COVID-19 iha mundu tomak no iha rai laran. Ba media no pedidu ba entrevista bele manda ba hasane@who.int ka wcotimorleste@who.int