

# Coronavirus Disease 2019 (COVID-19)

Situation Report – 139

## Timor-Leste

\*Data as reported on 15 February 2022

### SITUATION IN NUMBERS

#### TIMOR-LESTE



Cumulative  
**21,877 (1,129)**

Recovered (new)  
**20,196 (406)**

Active cases  
**1,557**

Deaths (new)  
**124 (2)**

#### VACCINATION STATUS



1<sup>st</sup> dose - **674,669**  
Coverage - **84.4%\*\***



2<sup>nd</sup> dose - **568,231**  
Coverage - **71.3%\*\***

\*As per data released by the [Ministry of Health](#)

\*\*For adult population 18 years and above

#### GLOBAL



Cases  
**410,565,868**

Deaths  
**5,810,880**

#### VACCINATION



**10,227,670,521** doses

### HIGHLIGHTS

- Since the last edition of the weekly situation report, the Ministry of Health (MoH) reported **1,129** new case of COVID-19, **406** recoveries and **2** deaths. The number of incident cases continues to increase but at a slower pace since the last reporting period.
- The National Health Laboratory conducted its first partners meeting with the objective to strengthen collaboration and cooperation for laboratory toxicology work in the country which will contribute to the overall improvement of food, water and environment safety. WHO Timor-Leste provided technical and financial support.
- Ministry of Health and partners conducted an annual evaluation meeting for Mother and Child Health programme and at the same time launched the Antenatal & Postnatal Care Guideline with technical support from WHO and UNFPA. This event was participated by healthcare personnel from all 13 municipalities.
- The US Government donated 100,620 doses of Pfizer BioNTech COVID-19 vaccines through the COVAX Facility were delivered through UNICEF on 12 February 2022. These would be used to support the ongoing vaccination campaign for children 12 to under 18 and for

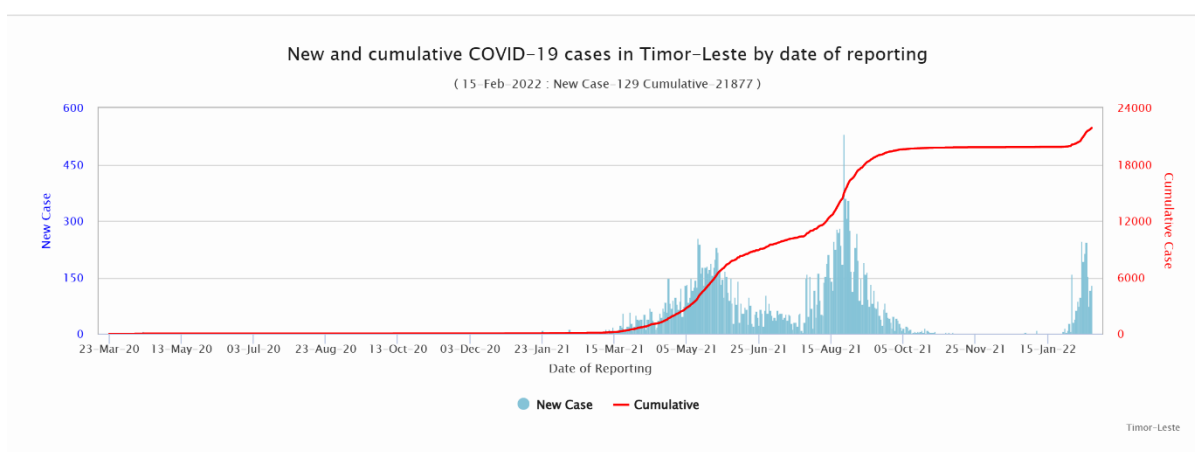
booster doses.

- UNICEF has supported SAMES to plan the distribution of Pfizer vaccine to all municipalities in line with the vaccine deployment plan agreed by the Ministry of Health and Inter-Ministerial Committee for Vaccine Deployment. In addition, UNICEF is supporting SAMES in monitoring the storage of the Pfizer vaccines stored at SAMES prior to distribution to municipalities.
- UNICEF, UNFPA and WHO provided medical equipment and supported the training of the first B-EmONC center in Liquica Municipality as a means to strengthen maternal and newborn services amidst the COVID-19 pandemic response and help improve the provision of 24hrs of quality maternal, newborn and child health care services.
- WHO and UNICEF supported the MOH to develop a plan for advocacy and community mobilization in all Municipalities for the roll-out of Pfizer vaccine for 12 - <18 year adolescent children, booster doses and AstraZeneca vaccines for the adult population who have not received 2 doses.
- As part of response to the current surge of dengue, WHO Timor-Leste and UNICEF is supporting the Ministry of Health on dengue prevention messages through sixty health inspectors going door to door campaign, dissemination of message on TV broadcasting, radio, and social media channels.
- WHO and UNICEF technical personnel continue to support community mobilization in all 13 municipalities to help raise awareness on COVID-19 prevention, vaccine uptake, promotion of routine health and nutrition services. This is supported through messaging on community radio, national television (RTTL) and social media.

## EPIDEMIOLOGICAL UPDATES

### 1. New and cumulative cases, as of 15 Feb. 2022

As shown by the epi curve below, the number of incident cases has been continuing to increase but seems at a slower pace during the recent days (76% increase during the current reporting period vs. 176% increase of the previous reporting period).



## 2. Distribution of cases and deaths by municipalities

**Distribution of newly reported, recovered, and active cases by municipalities, as of 15 February 2022)**

Municipality	New case (9-15 Feb. 2022)	Last 7-day % change (case)*	Cumulative case	New recovered (9-15 Feb. 2022)	Cumulative recovered	New death (9-15 Feb. 2022)	Cumulative death	Active Cases (15 Feb. 2022)
Aileu	7	100	133	0	125	0	1	7
Ainaro	22	100	249	0	224	0	3	22
Baucau	36	800	1582	0	1535	0	7	40
Bobonaro	56	460	681	1	607	0	9	65
Covalima	7	100	798	0	787	0	3	8
Dili	969	60	15578	398	14120	2	83	1375
Ermera	0	-100	1114	0	1111	0	2	1
Lautem	0	0	185	1	180	0	5	0
Liquica	2	100	127	0	124	0	1	2
Manatuto	20	900	225	0	201	0	2	22
Manufahi	4	100	269	0	265	0	0	4
RAEOA	6	-67	417	6	403	0	3	11
Viqueque	0	0	519	0	514	0	5	0
TOTAL	1129	76	21877	406	20196	2	124	1557

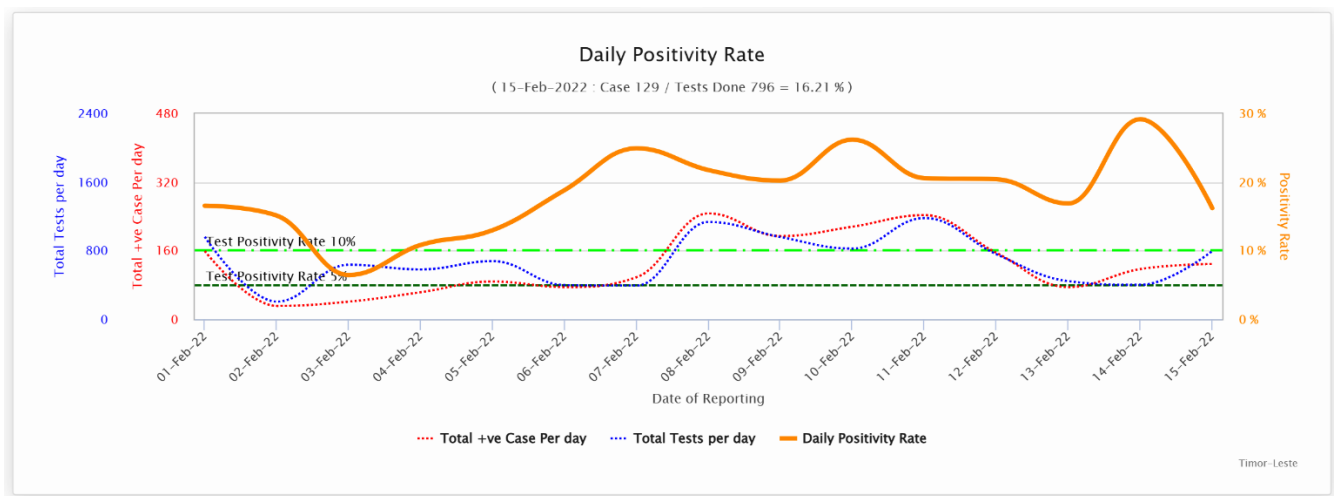
**\*Change in new COVID-19 cases as compared with the previous 7 days**

- A total of 1,129 new cases are reported during the current reporting period (9-15 Feb. 2022), as compared 643 cases reported during the previous reporting period (2-8 Feb. 2022), with a 76% increase. Majority cases (86%) are reported from Dili, while all other municipalities except Ermera, Lautem and Viqueque have reported incident cases.
- Two COVID-19 related deaths have been reported from Timor-Leste during this reporting period, which are the first deaths after 13 weeks.
- The number of active cases has been 1,557 as of 15 Feb. 2022.

### 3. Number of test and test positivity rates

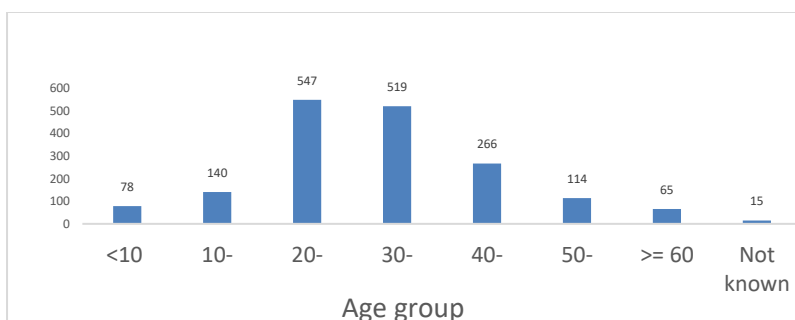
During the current reporting period from 9-15 Feb. 2022, 5,364 tests were conducted, as compared to 4,026 tests in the previous 7 days.

The test positive rate of this reporting period is averaged as 21.0%, as compared with 16.0% of the previous reporting period. The figure below illustrates the daily number of test, cases and test positivity proportion. The test positivity fluctuates at a higher level of about 20-30%.

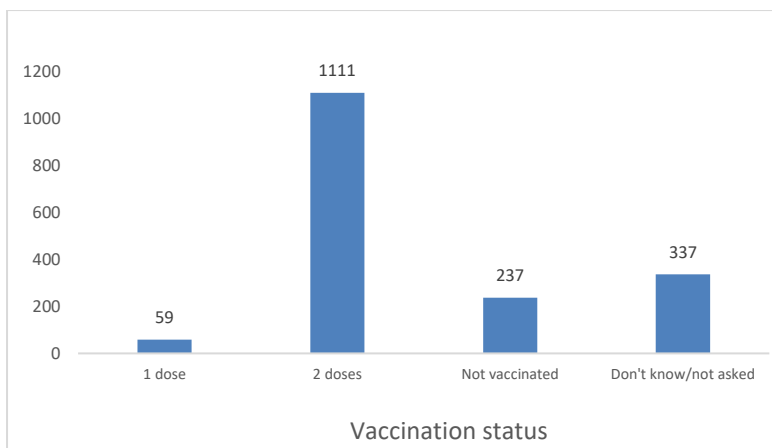


### 4. Characteristics of the cases

Of the cases reported during the past 14 days (2-15 Feb. 2022), majority (61%) are 20-39 years old. There are fewer cases of less than 10 years and the 60 years old group.

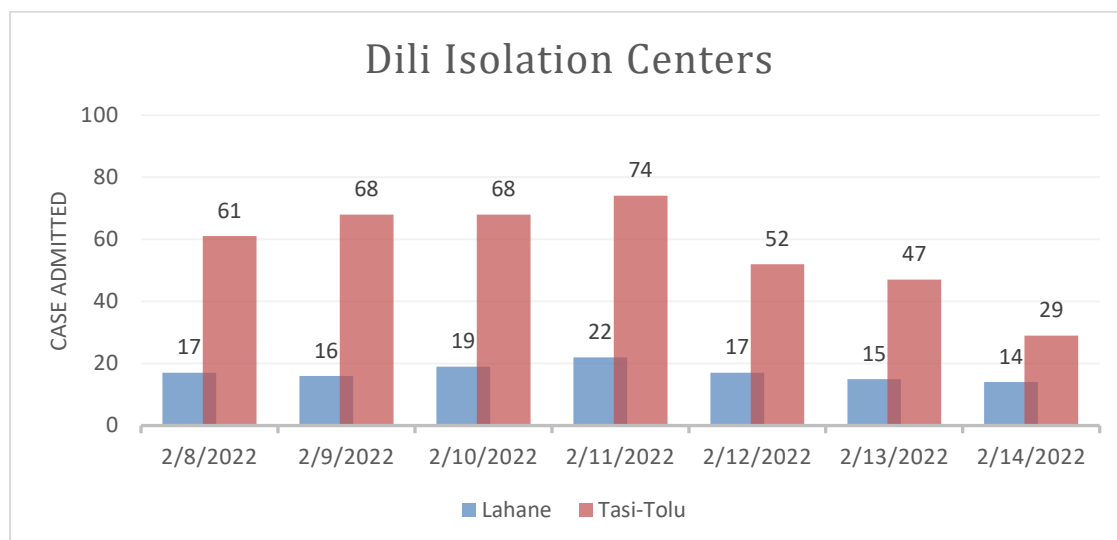


When looking at the vaccination status of the reported cases, it could be seen that 67% of the cases have been vaccinated with one or two doses of vaccines, while only 14% of them clearly stated they were not vaccinated. This is in sharp contrast to the vaccination status of the cases of the previous wave transmission when most of the infected were not vaccinated.

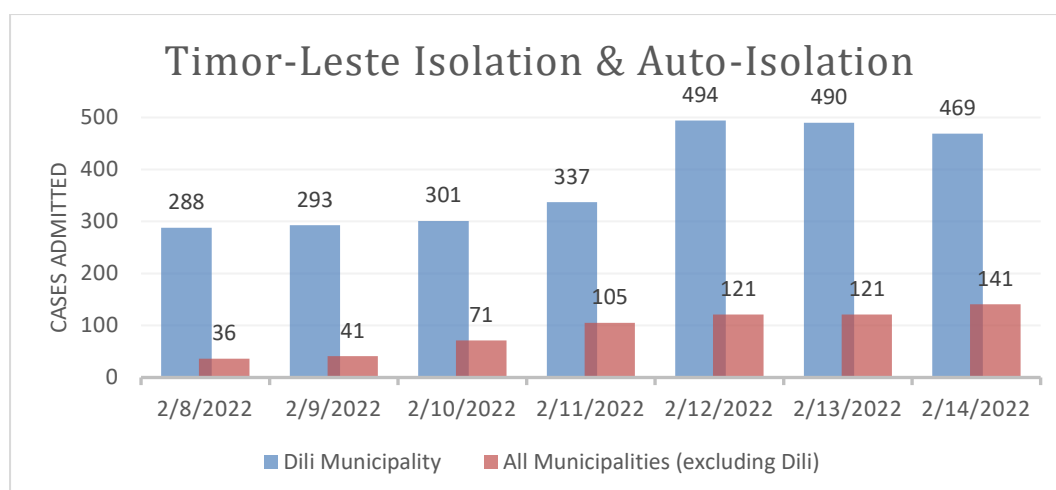


## CASE MANAGEMENT

Currently, Vera Cruz Isolation Center has been repurposed for Dengue treatment. Lahane Isolation Center is the major case management facility receiving COVID-19 patients with different severity, while part of Tasi Tolu isolation center manages mild/moderate patients with risk factors. As shown in the figure below, the number of patients in the above facilities are stable during the current reporting period. The current bed occupancy for Lahane Isolation center is 63%, and 12% for Tasi Tolu Isolation center.



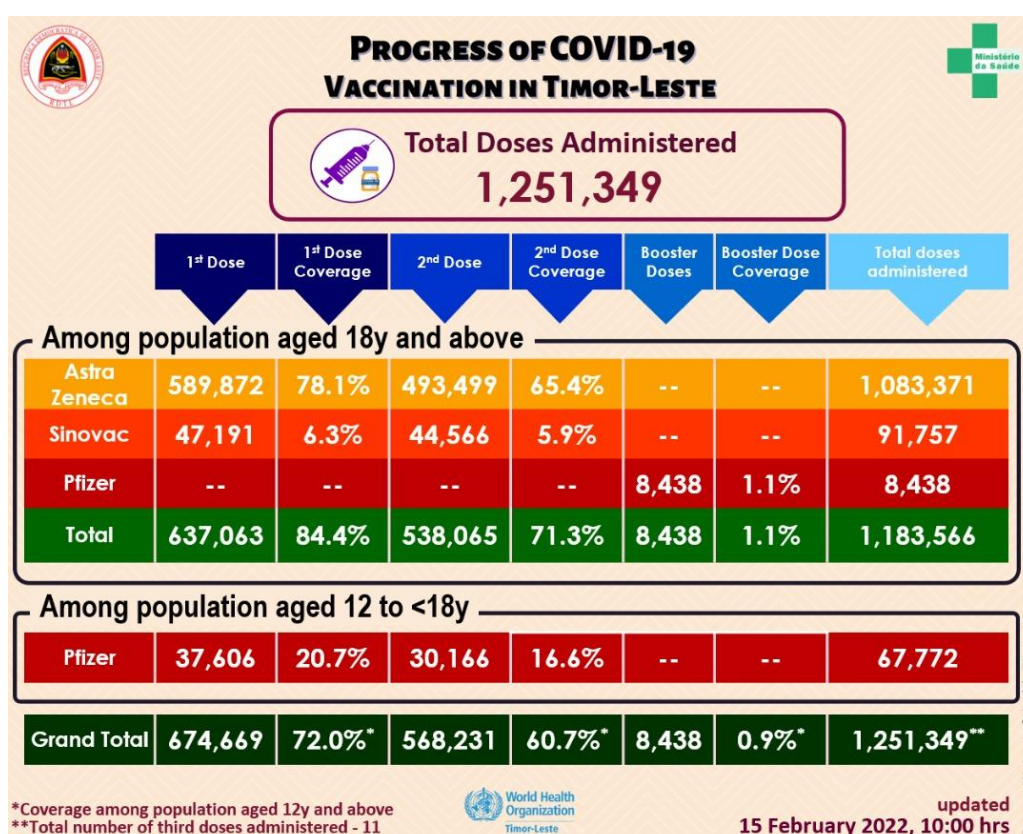
The chart below shows the total number of people admitted to isolation centres and auto-isolation (at home) in 12 municipalities compared to Dili. Throughout Timor-Leste, patients admitted to isolation centres have steadily increased.



## VACCINATION

At the time of writing this report (15/02/2022 morning), in total, 1,251,349 COVID-19 vaccine doses comprising 674,669 first doses (coverage 84.4% among population aged 18 years and above and 20.7% among the population aged 12 years to <18 years), 568,231 second doses (coverage 71.3% among population aged 18 years and above and 16.6% among the population aged 12 years to <18 years), 8,438 (coverage 1.1% among population aged 18 years) booster doses were administered in Timor-Leste. The breakdown of the number of doses administered and coverage by vaccine product and vaccine dose is illustrated in Table 1.

**Table 1: Number of COVID-19 vaccine doses administered and coverage in Timor-Leste by vaccine product and dose as of 10:00hrs 15/02/2022**



updated  
15 February 2022, 10:00 hrs

Figure 1: Coverage of COVID-19 vaccination among population aged 18 years and above by municipality in Timor-Leste as of 10:00hrs 15/02/2022

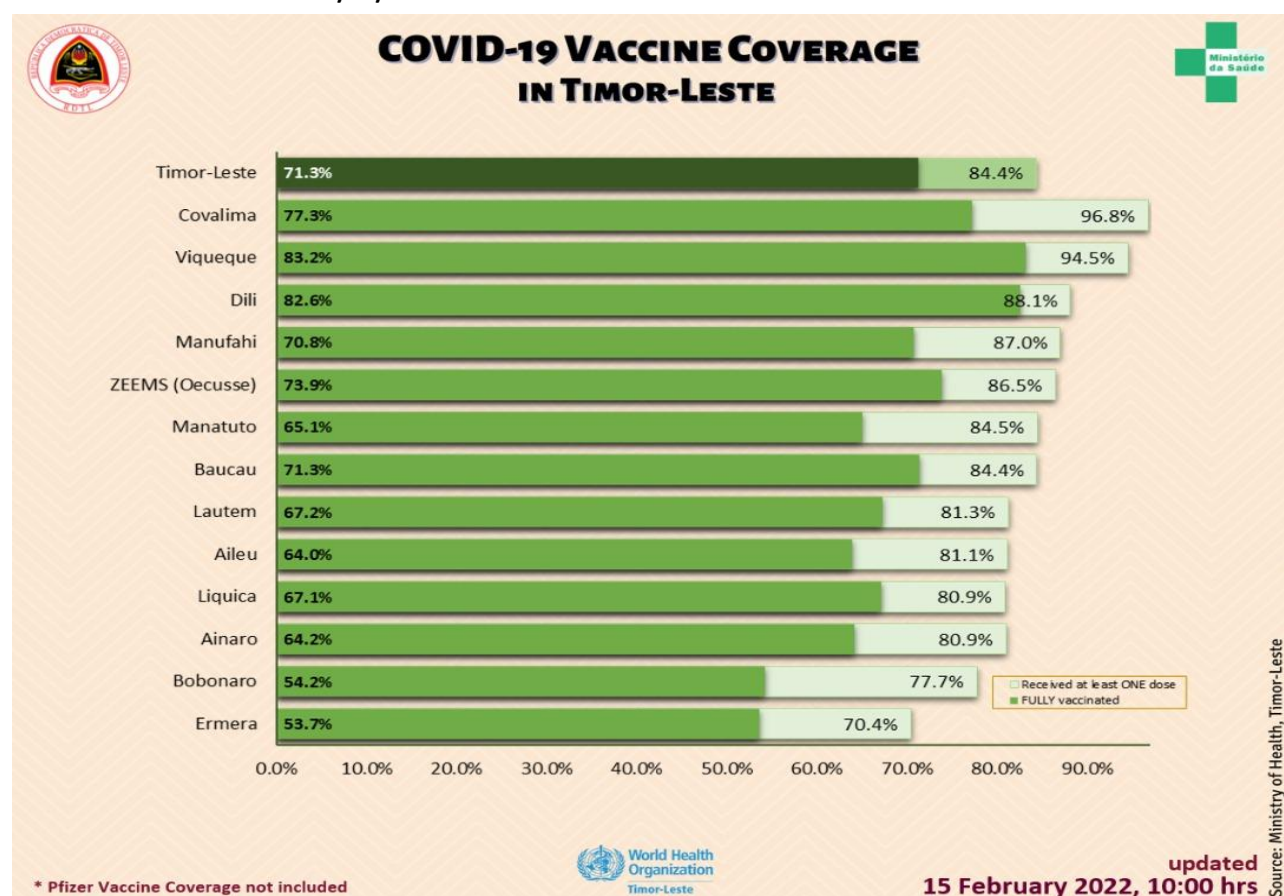
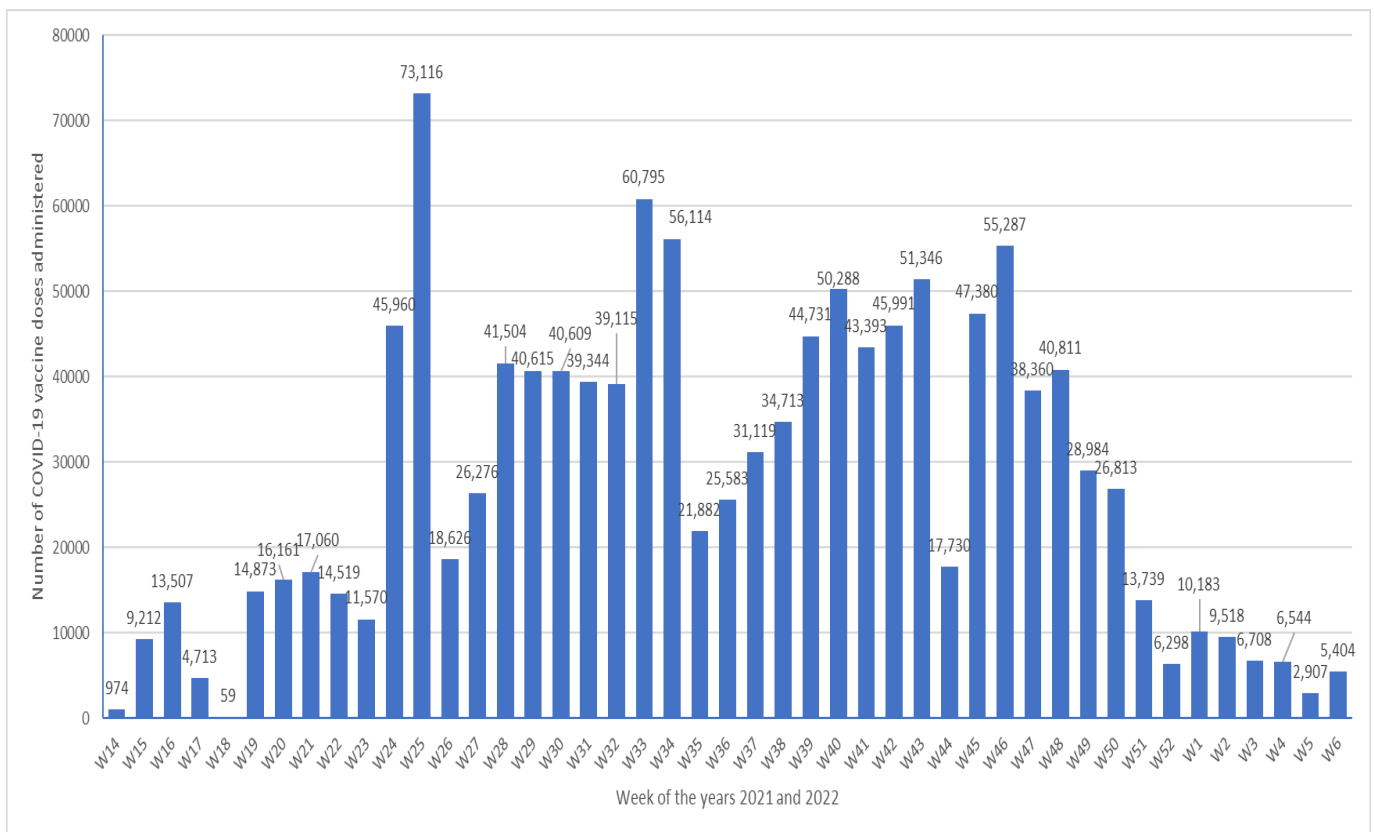


Table 2: Total number of individuals vaccinated with all the vaccine products (AstraZeneca, Sinovac, and Pfizer) and AEFI by sex by district in Timor-Leste as of 10:00 hrs 15/02/2022

Municipality	Number Vaccinated									AEFI		
	First Dose			Second Dose			Third & Booster			Male	Female	Total
	Male	Female	Total	Male	Female	Total	Male	Female	Total			
Dili	122,117	103,952	226,069	109,723	97,029	206,752	5,237	2,923	8,160	14	26	40
Aileu	12,932	12,393	25,325	10,014	9,964	19,978	-	-	-	1	1	2
Ainaro	14,426	14,015	28,441	11,198	11,344	22,542	-	-	-	0	0	0
Baucau	30,649	31,248	61,897	25,870	26,436	52,306	213	44	257	0	0	0
Bobonaro	22,116	21,993	44,109	15,512	15,245	30,757	-	-	-	4	6	10
Covalima	19,376	19,563	38,939	15,579	15,499	31,078	-	-	-	7	6	13
Ermera	27,436	25,472	52,908	20,705	19,613	40,318	-	-	-	0	0	0
Lautem	14,168	15,427	29,595	11,365	13,124	24,489	-	-	-	2	0	2
Liquica	18,069	18,494	36,563	14,943	15,385	30,328	14	18	32	0	1	1
Manatuto	12,328	11,673	24,001	9,360	9,137	18,497	-	-	-	2	0	2
Manufahi	14,881	14,150	29,031	12,007	11,608	23,615	-	-	-	1	2	3
Viqueque	20,198	21,322	41,520	17,557	19,010	36,567	-	-	-	6	0	6
ZEEMS (Oecusse)	17,604	18,667	36,271	15,079	15,925	31,004	-	-	-	0	0	0
Total (without Dili)	224,183	224,417	448,600	179,189	182,290	361,479	227	62	289	23	16	39
Total (Timor-Leste)	346,300	328,369	674,669	288,912	279,319	568,231	5,464	2,985	8,449	37	42	79

**Figure 2: Weekly progress of COVID-19 vaccination in Timor-Leste as of 10:00 hrs 13/02/2022**



**Table 3. Number of individuals among population aged 12 years to <18 years and above\* vaccinated with Pfizer vaccine and coverage by district in Timor-Leste as of 10:00hrs 15/02/2022**

Municipality	12to <18y Population	First Dose				Second Dose			
		12 to <18y Students	12 to <18y Non-students	Total	Coverage	12 to <18y Students	12 to <18y Non-students	Total	Coverage
Dili	41,822	37,563	43	37,606	89.9%	30,146	20	30,166	72.1%
Aileu	7,770	-	-	-	0.0%	-	-	-	0.0%
Ainaro	10,253	-	-	-	0.0%	-	-	-	0.0%
Baucau	18,189	-	-	-	0.0%	-	-	-	0.0%
Bobonaro	14,466	-	-	-	0.0%	-	-	-	0.0%
Covalima	9,729	-	-	-	0.0%	-	-	-	0.0%
Ermera	20,564	-	-	-	0.0%	-	-	-	0.0%
Lautem	10,447	-	-	-	0.0%	-	-	-	0.0%
Liquica	11,137	-	-	-	0.0%	-	-	-	0.0%
Manatuto	7,108	-	-	-	0.0%	-	-	-	0.0%
Manufahi	8,267	-	-	-	0.0%	-	-	-	0.0%
Viqueque	11,490	-	-	-	0.0%	-	-	-	0.0%
ZEEMS (Oecusse)	10,565	-	-	-	0.0%	-	-	-	0.0%
Total (without Dili)	139,985	-	-	-	0.0%	-	-	-	0.0%
Total (Timor-Leste)	181,807	37,563	43	37,606	20.7%	30,146	20	30,166	16.6%

\*Based on 2021 population projections

**Total Vaccinated (both doses) 67,772**

**Table 4. Number of individuals among population aged 18 years and above\* vaccinated with AstraZeneca and Sinovac vaccines and coverage by district in Timor-Leste as of 10:00hrs 15/02/2022**

Municipality	Eligible Population			Number vaccinated & Coverage																	
	High Risk Groups (20% Pop.)	18-59y no comorbidity (80% Pop.)	Total	First Dose						Second Dose						Booster Dose					
				High Risk Groups (20% Pop.)	Coverage	18-59y no comorbidity (80% Pop.)	Coverage	Total	Coverage	High Risk Groups (20% Pop.)	Coverage	18-59y no comorbidity (80% Pop.)	Coverage	Total	Coverage	High Risk Groups (20% Pop.)	Coverage	18-59y no comorbidity (80% Pop.)	Coverage	Total	Coverage
Dili	29,980	183,822	213,802	53,665	179.0%	134,798	73.3%	188,463	88.1%	34,481	115.0%	142,105	77.3%	176,586	82.6%	3388	1.6%	4761	2.2%	8140	3.8%
Alileu	6,292	24,943	31,235	13,004	206.7%	12,321	49.4%	25,325	81.1%	10,889	173.1%	9,089	36.4%	19978	64.0%	0	0.0%	0	0.0%	0	0.0%
Ainaro	7,410	27,726	35,136	6,730	90.8%	21,711	78.3%	28,441	80.9%	5,108	68.9%	17,434	62.9%	22542	64.2%	0	0.0%	0	0.0%	0	0.0%
Baucau	18,141	55,175	73,316	17,526	96.6%	44,371	80.4%	61,897	84.4%	13,300	73.0%	38,946	70.0%	52300	71.3%	247	0.3%	10	0.0%	257	0.4%
Bobonaro	13,268	43,476	56,744	11,083	83.5%	33,026	76.0%	44,109	77.7%	7,401	55.8%	23,356	53.7%	30757	54.2%	0	0.0%	0	0.0%	0	0.0%
Covallima	8,725	31,503	40,228	10,211	117.0%	28,728	91.2%	38,939	96.8%	7,312	83.8%	23,766	75.4%	31078	77.3%	0	0.0%	0	0.0%	0	0.0%
Ermera	14,350	60,793	75,143	11,054	77.0%	41,854	68.8%	52,908	70.4%	6,745	47.0%	33,573	55.2%	40318	53.7%	0	0.0%	0	0.0%	0	0.0%
Lautem	8,455	27,963	36,418	8,493	100.4%	21,102	75.5%	29,595	81.3%	6,927	81.9%	17,562	62.8%	24489	67.2%	0	0.0%	0	0.0%	0	0.0%
Liquica	9,588	35,597	45,185	9,195	95.9%	27,368	76.9%	36,563	80.9%	7,092	74.0%	23,236	65.3%	30328	67.1%	32	0.1%	0	0.0%	32	0.1%
Manatuto	6,701	21,718	28,419	6,879	102.7%	17,122	78.8%	24,001	84.5%	4,832	72.1%	13,665	62.9%	18497	65.1%	0	0.0%	0	0.0%	0	0.0%
Manufahi	7,595	25,766	33,361	9,712	127.9%	19,319	75.0%	29,031	87.0%	9,466	124.6%	14,149	54.9%	23615	70.8%	0	0.0%	0	0.0%	0	0.0%
Viqueque	11,034	32,905	43,939	12,542	113.7%	28,978	88.1%	41,520	94.5%	10,556	95.7%	26,011	79.0%	36567	83.2%	0	0.0%	0	0.0%	0	0.0%
ZEEMS (Decusse)	9,408	32,534	41,942	11,630	123.6%	24,641	75.7%	36,271	86.5%	8,145	86.6%	22,859	70.3%	31,004	73.9%	0	0.0%	0	0.0%	0	0.0%
Total (without Dili)	120,967	420,098	541,065	128,059	105.9%	320,541	76.3%	448,600	82.9%	97,833	80.9%	263,646	62.8%	361,479	66.8%	279	0.1%	10	0.0%	289	0.1%
Total (Timor Leste)	150,947	603,920	754,867	181,724	120.4%	455,339	75.40%	637,063	84.4%	132,314	87.7%	405,751	67.2%	538,065	71.3%	3667	0.5%	4771	0.6%	8438	1.1%

\*Based on 2021 population projections. Population with Comorbidity 12.5% among 18-59y based on 2016 DHS data

High Risk Groups (20% of the population) - Healthcare staff, other front line staff, aged 65y and above, and 18-59y with comorbidity

18-59y with no comorbidity (80% of the population)

Total Vaccinated (all doses) 1,183,566 (Total No. of third Doses - 11 )

## SITUATION ANALYSIS

- Timor-Leste currently is in the early phase of the third wave of transmission primarily driven by Omicron. The number of cases is increasing, and two deaths have been reported after 13 weeks. This again reminds us about the pressure we are facing, especially if more cases are from the remote areas where capacity of the health care facilities is limited.
- Globally and in the WHO South East Asia Region (SEAR), many countries are experiencing decreases of reported cases. Overall less cases are reported from SEAR countries recently, but Indonesia, Myanmar, Sri Lanka, Thailand and Timor-Leste reported an increase in new cases. We have to wait for several more weeks before we can see the declining of new cases which has been seen in other countries.
- For Timor-Leste, we should continue to improve our surveillance and testing capacities, and get ready for surge of severe and critical cases.

## AVAILABLE RESOURCES

- [For public and professionals on prevention, treatment, and vaccination etc.](#)
- [WHO Recommendations for COVID-19 Related Decisions](#)
- WHO Free Courses in Tetum – [OpenWHO.org](#)

## COVID-19 INFORMATION AND MEDIA QUERIES

- The MoH has established a hotline number – 119 – for COVID-19 on which people can call to get any COVID-19 related information.
- Additionally, [MoH Facebook page](#) provides timely updates on COVID-19 developments in the country.
- WHO Timor-Leste through its [Facebook page](#) and [Twitter handle](#) also disseminates information on preventive measures, questions and answers, myth-busters and latest updates on COVID-19 globally and nationally.
- For media queries and interviews requests can be sent to [hasane@who.int](mailto:hasane@who.int)