

# Moras virus Corona 2019 (COVID-19)

Relatóriu Situasaun – 139

## Timor-Leste



World Health  
Organization

Timor-Leste

\*Dadus relata to'o loron 15 Feveireiru 2022

### SITUASAUN IHA NÚMERU

#### TIMOR-LESTE



Kumulativu  
**21,877**  
(1,129)



Rekuperadu (foun)  
**20,196 (406)**



Kazu ativu  
**1,557**



Óbitu (foun)  
**124 (2)**

#### PROGRESU IMUNIZASAUN COVID-19



Doze 1<sup>a</sup> – **674,669**  
Kobertura – **84.4%\*\***



Doze 2<sup>a</sup> – **568,231**  
Kobertura – **71.3%\*\***

\* Bazeia ba dadus ne'ebé pública husi [Ministerio da Saúde](#)

\*\* Ba populasaun adultu tinan 18 ba leten

#### GLÓBÁL



Kazu  
**410,565,868**



Óbitu  
**5,810,880**

#### PROGRESU IMUNIZASAUN COVID-19



Doze vasina  
**10,227,670,521**

### SUMÁRIU

- Dezde edisaun ikus relatóriu situasaun, Ministeriu Saúde relata hamutuk **1,129** kazu foun COVID-19, kazu rekuperadu **406** no kazu óbitu **2**. Número kazu foun COVID-19 kontinua aumenta maibe ho pasu neineik dezde períodu relatóriu ikus.
- Laboratóriu Nasionál Saúde hala'o enkontru dahuluk hamutuk ho parseiru sira ho objetivu atu haforsa liután kolaborasaun no kooperasaun ba serbisu labotaróriu toksikolojia iha rai laran ne'ebé sei fó kontribusaun ba melloramentu jerál iha área ai-han, bee, no seguransa ambientál. Atividade refere hetan apoiu tékniku no finansia husi OMS.
- Ministériu Saúde no parseiru sira hala'o ona enkontru hadi halo avaliasaun annual ba programa Saúde Inan no Oan no iha tempu hanesan lansa ona Matadalan ba Kuidadu Pré-natal & Pós-natal ho apoiu tékniku husi OMS no UNFPA. Eventu ida ne'e hetan partisipasaun husi pesoal saúde sira husi munisípiu 13 hotu.
- Governu EUA fornese vasina COVID-19 Pfizer BioNTech hamutuk doze 100,620 ba SAMES liu husi Facilidade COVAX ne'ebé entrega ona husi UNICEF iha loron 12 Feveireiru 2022. Vasina ne'e hotu sei utiliza hodi suporta kampaña vasinasaun ne'ebé hala'o hela ba labarik tinan 12

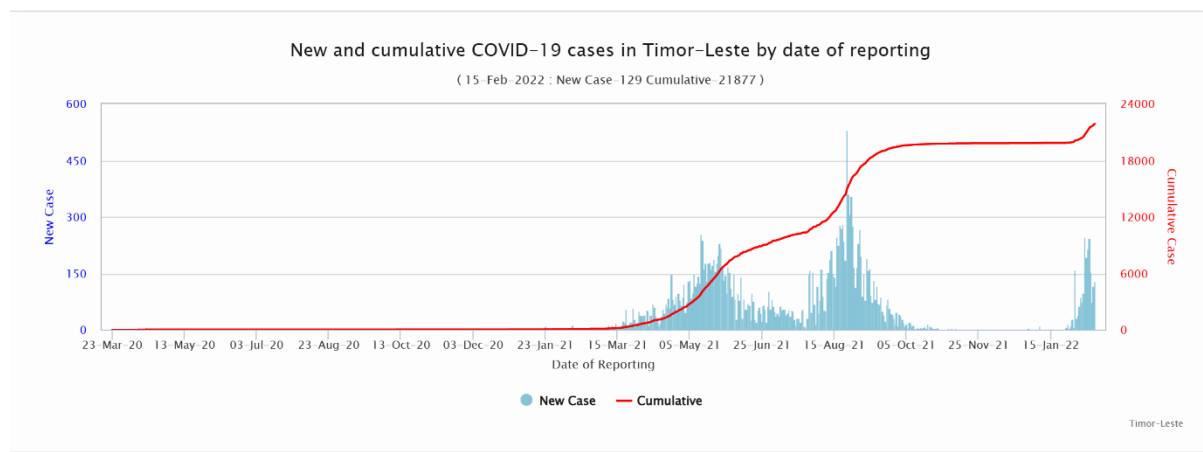
too tinan menus husi 18 no moos ba doze *booster*.

- UNICEF apoiu ona SAMES hodi halo planu ba distribuisaun vasina Pfizer ba munisípiu hotu tuir planu distribuisaun vasina ne'ebé hetan ona akordu husi Ministériu Saúde no Komité Interministerial ba Distribuisaun Vasina. Alein ida ne'e, UNICEF suporta hela SAMES hodi halo monitorizasaun ba vasina Pfizer sira ne'ebé rai hela iha SAMES molok halo distribuisaun ba munisípiu sira.
- UNICEF, UNFPA no OMS fornese ona ekipamentus médiku sira no apoiu ona treinamentu sentru B-EmONC dahuluk iha munisípiu Liquiça hanesan dalan ida hodi haforsa servisu maternal no neonatal sira nian durante pandemia COVID-19 no hodi ajuda mellora forneshimentu atendimentu 24h ba servisu maternal, neonatal no infantil ne'ebé ho qualidade.
- UNICEF apoiu ona Ministériu Saúde hodi dezenvolve planu advokasia no mobilizasaun komunitária iha munisípiu sira hotu ba implementasaun vasina Pfizer ba adolescentes ho idade 12 to'o <18, vasina *booster* no vasina AstraZeneca ba populaasaun adultu sira ne'ebé seidak simu doze daruak.
- OMS Timor-Leste ho UNICEF fo hela apoiu ba Ministériu Saúde hanesan parte ba responde ba atual surtu denge, ho mensajen prevensaun ba moras denge liu husi inspetor sanitaria hamutuk nain-60 iha kampaña *door-to-door*, diseminasaun mensajen iha TV, rádiu no kanál mídia sosial sira.
- Pesoad tékniku UNICEF no OMS nian kontinua fo apoiu ba mobilizasaun komunitária iha munisípiu 13 hotu hodi ajuda aumenta konsientizasaun kona-ba prevensaun COVID-19, entendimentu vasina, promosaun servisu saúde no nutrisaun rotina. Hirak ne'e hetan apoiu liu husi hato'o mensajen liu husi rádiu komunitária, televizaun nasional (RTTL) no mídia sosial.

## ATUALIZASAUN EPIDEMIOLÓJIKU

### 1. Kazu COVID-19 kumulativu no kazu foun, relata to'o loron 15 Feveiru 2022

Hanesan hatudu iha gráfiku epi tuir mai ne'e, númeru kazu insidente kontinua aumenta, maibe ho ritmu neinek iha loron ikus hirak ne'e (kazu aumenta 76% períodu relatóriu ida ne'e kompara ho 176% iha períodu relatóriu liu ba).



## 2. Distribuisaun kazu no kazu óbitu tuir munisípiu

Distribusaun kazu foun ne'ebé relata, kazu rekuperadu no kazu ativu tuir munisípiu, to'o loron 15 Feveireiru 2022

Munisípiu	Kazu foun (9-15 Fev. 2022)	Loron 7 - mudansa % (kazu)*	Kazu kumulativu	Kazu rekuperadu (9-15 Fev. 2022)	Kazu rekuperadu kumulativu	Kazu óbitu foun (9-15Fev. 2022)	Kazu óbitu kumulativu	Kazu ativu (15 Fev. 2022)
Aileu	7	100	133	0	125	0	1	7
Ainaro	22	100	249	0	224	0	3	22
Baucau	36	800	1582	0	1535	0	7	40
Bobonaro	56	460	681	1	607	0	9	65
Covalima	7	100	798	0	787	0	3	8
Dili	969	60	15578	398	14120	2	83	1375
Ermera	0	-100	1114	0	1111	0	2	1
Lautem	0	0	185	1	180	0	5	0
Liquica	2	100	127	0	124	0	1	2
Manatuto	20	900	225	0	201	0	2	22
Manufahi	4	100	269	0	265	0	0	4
RAEOA	6	-67	417	6	403	0	3	11
Viqueque	0	0	519	0	514	0	5	0
<b>TOTAL</b>	<b>1129</b>	<b>76</b>	<b>21877</b>	<b>406</b>	<b>20196</b>	<b>2</b>	<b>124</b>	<b>1557</b>

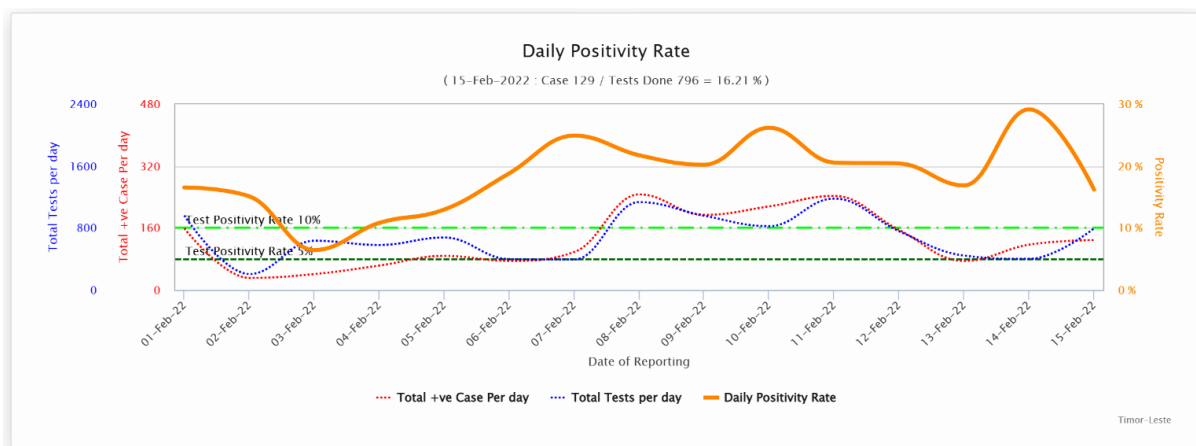
\*Mudansa kazu COVID-19 kompara ho loron 7 ikus

- Total kazu foun hamutuk 1,129 ne'ebé relata iha períodu relatóriu (9-15 Fev. 2022), kompara ho kazu 643 ne'ebé relata iha periodu relatóriu ikus (2-8 Fev. 2022) ho aumenta 76%. Maioria husi kazu sira ne'e hotu (86%) detekta iha Dili, no seluk sira hotu exeptu Ermera, Lautem no Viqueque relata ona kazu insidente.
- Kazu óbitu hamutuk nain-2 mak relata ona iha períodu relatóriu ida ne'e, ne'ebé sai hanesan kazu óbitu dahuluk hafoin liu tiha semana 13.

- Númeru kazu ativu agora to'o loron 15 Feveireiru 2022 hamutuk na'in-1,557.

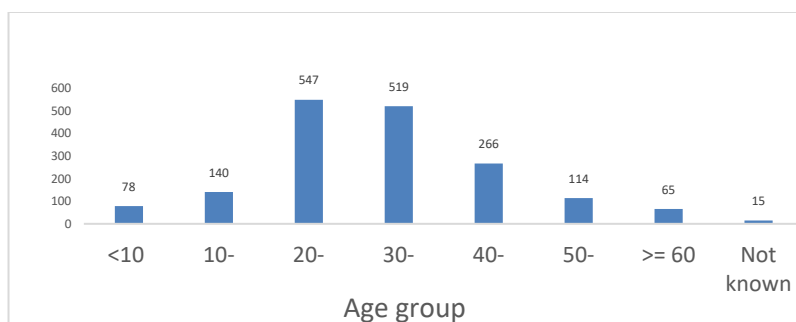
### 3. Teste diáriu, taxa pozitivu no taxa teste positividade

- Durante data relatóriu atuál ida ne'e husi loron 9-15 Fev. 2022, halo ona teste ba amostra 5,364 kompara ho loron 7 liu ba teste ba amostra hamutuk 4,026.
- Taxa teste positividade husi periodu relatóriu ida ne'e ho médiu 21.0%, kompara ho 16.0% hosi periodu relatóriu liuba. Figura tuir mai ne'e hatudu proporsauun teste, kazu no positividade. Positividade teste flutua iha nível ida ne'ebé aas liu husi 20-30%

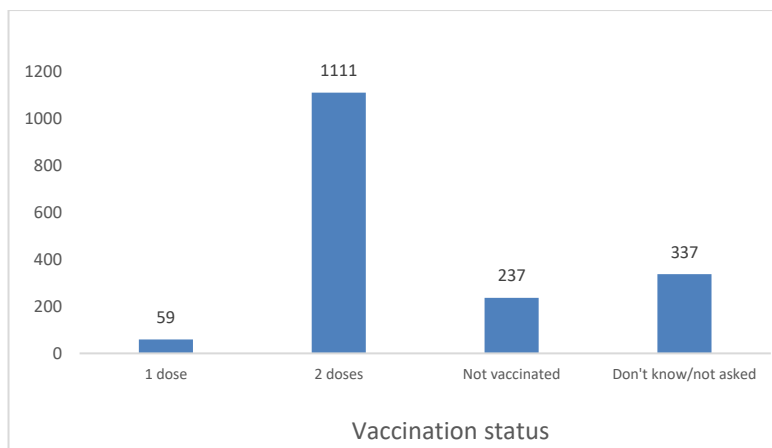


### 4. Karaterístiku kazu

Husi kazu sira ne'ebé relata ona durante loron 14 nia laran (2-15 Fev. 2022), maioria (61%) tinan 20-39. Kazu entre grupu tinan 10 mai kraik no tinan 60.



Bainhira haree ba estadu vasinasaun hosi kazu relatadu sira, it abele haree katak 67% husi kazu sira ne'e hotu vasina ona doze ida ka rua, enkuantu 14% deit mak seidauk vasina. Ida ne'e kontraste maka'as ho estadu vasinasaun husi kazu sira iha onda transmisaun anterior, ne'ebé maioria husi sira ne'ebé infetadu seidauk vasina.



## JESTAUN KAZU COVID-19

Daudauk ne'e, Sentru Izolamentu Vera Cruz reutiliza ona ba fatin tratamentu ba moras dengue. Sentru Izolamentu Lahane mak facilidade prinsipal ba jestaun kazu ne'ebé simu paciente sira ho COVID-19 ho gravidade diferente, enkuantu parte balun iha Sentru Izolamentu Tasi Tolu ba jestaun kazu kma'an/moderadu ho fator risku sira. Hanesan hatudu iha figura tuir mai ne'e, número paciente iha facilidade sira ne'ebé temi ona iha leten sira nia kondisaun estavel iha período relatóriu ida ne'e. Okupante kama atual hamutuk 63% iha Sentru Izolamentu Lahane, no 12% iha Sentu Izolamentu Tasi Tolu.

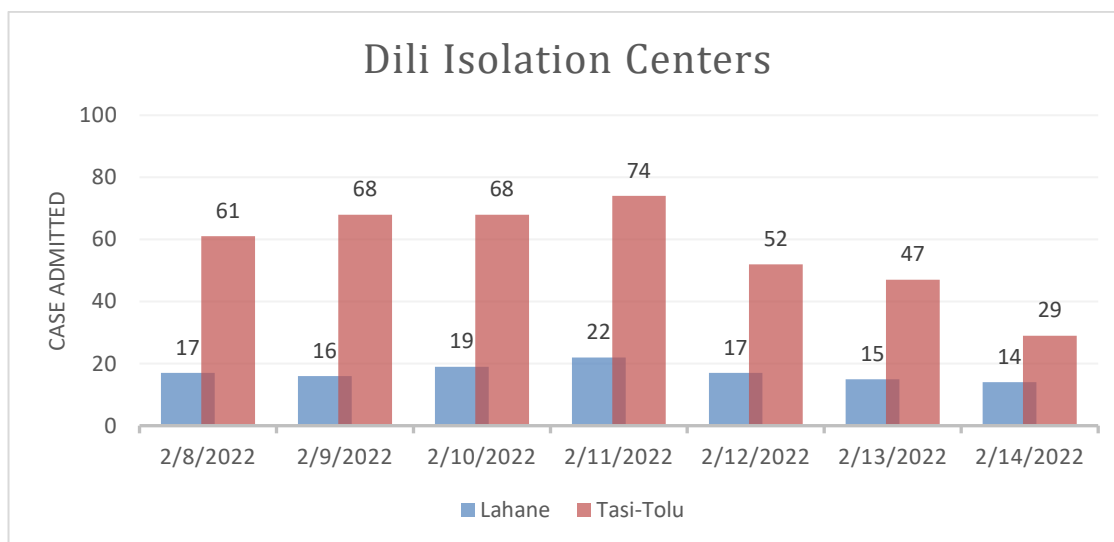
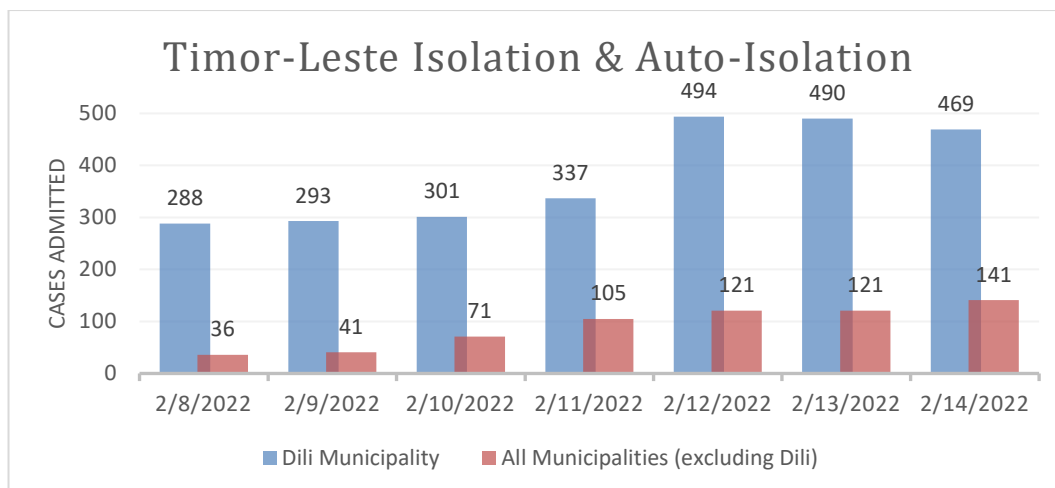


Figura tuir mai ne'e hatudu número total paciente admite iha sentru izolamentu sira no sira iha auto-izolamentu (iha uma) iha munisípiu 12 komapara ho Dili. Iha Timor-Leste laran tomak, número paciente admite iha sentru izolamentu sira konstantemente aumenta.



## IMUNIZASAUN COVID-19

Iha periodu relatóriu ida ne'e (15 Fev. 2022 dadeer), total doze vasina COVID-19 ne'ebé administra 1,251,349 kompostu husi doze dahuluk 674,669 (kobertura 84.4% entre populasaun idade 18 no liu no 20.7% entre populasaun idade 12 to'o <18) no doze daruak 568,231 (kobertura 71.3% entre populasaun idade 18 no liu 16.6% entre populasaun idade 12 to'o <18), doze *booster* 8,438 (kobertura 1.1% entre populasaun idade 18 no liu) maka administra ona iha territóriu Timor-Leste tomak. Detallu husi númeru doze vasina ne'ebé administra ona no kobertura tuir produktu vasina no doze vasina nian bele refere ba Tabela 1 & Figura 1.

**Tabela 1: Númeru doze vasina COVID-19 ne'ebé administra ona no kobertura iha Dili no Timor-Leste tuir vasina nia marka no doze sira, atualizada to'o 10:00hrs 15/02/2022**

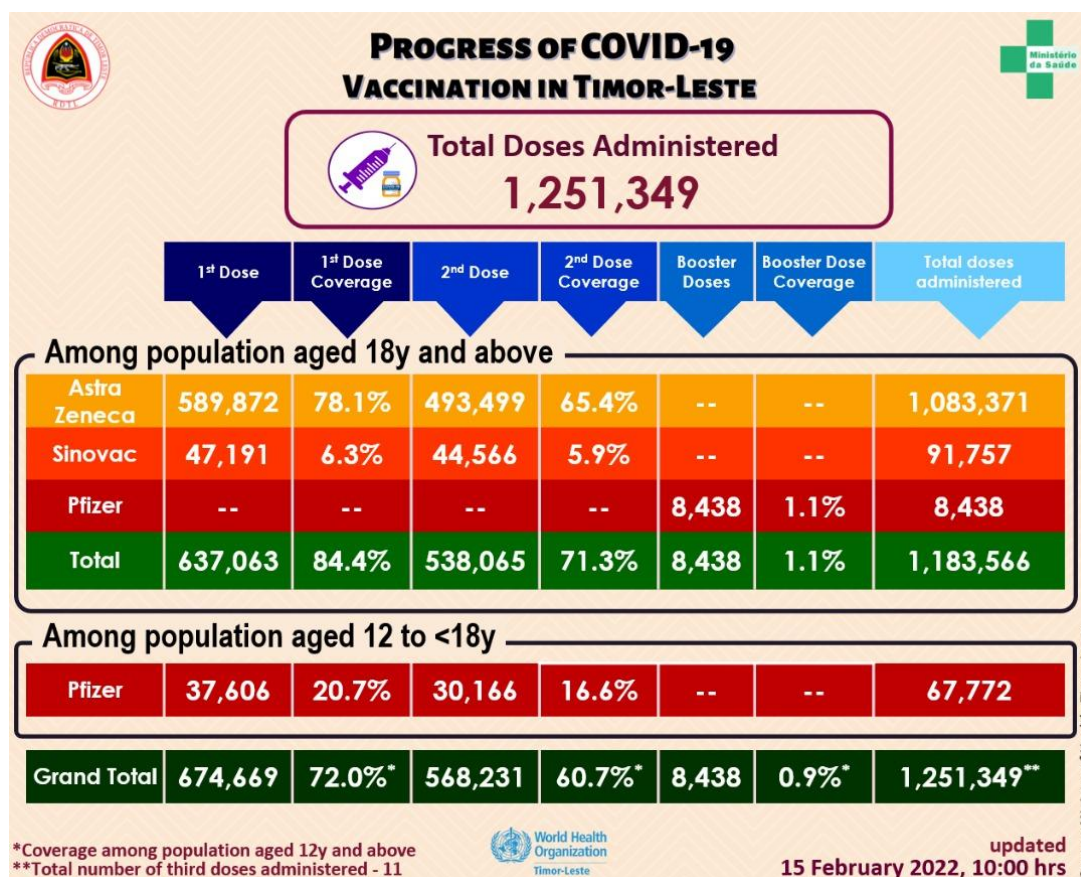




Figura 1: Kobertura vasina COVID-19 ba populasaun tinan 18 ba leten tuir munisípiu iha Timor-Leste atualizada 10:00hrs 15/02/2022

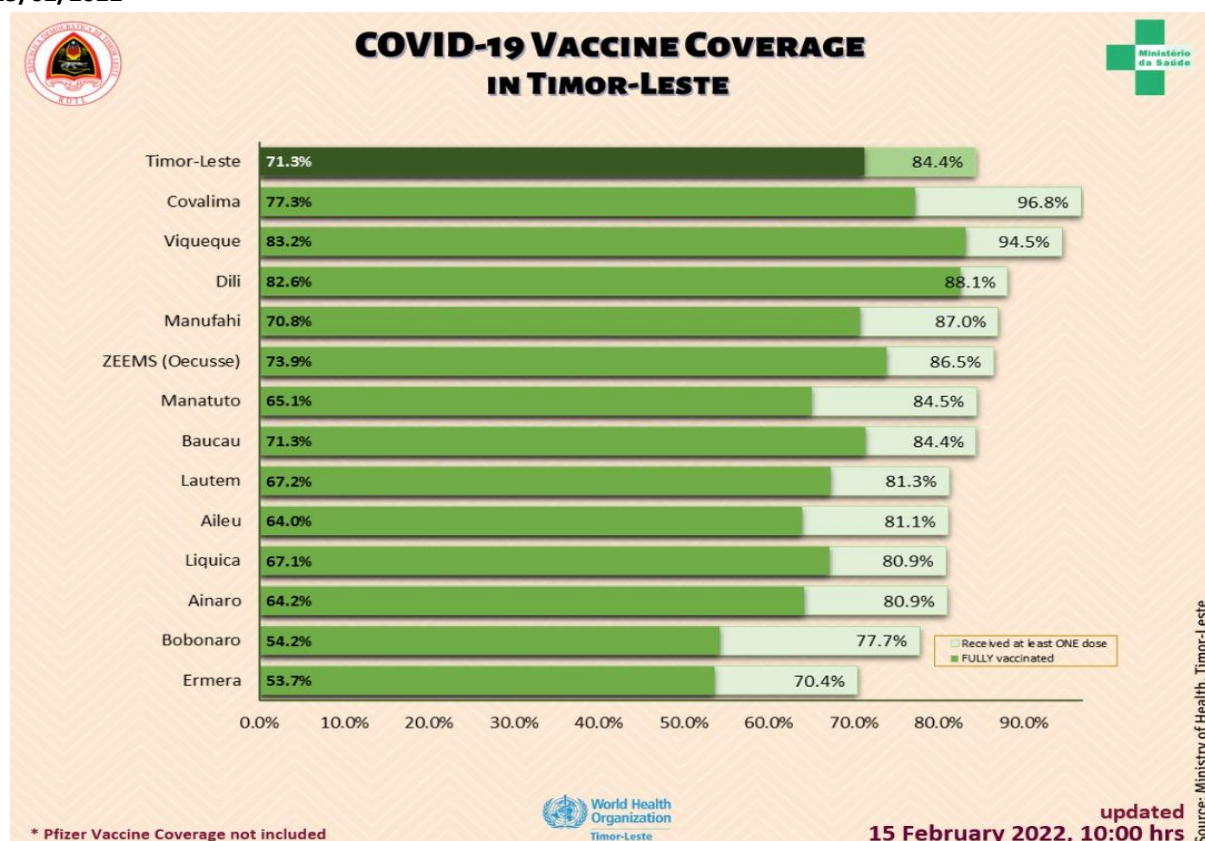
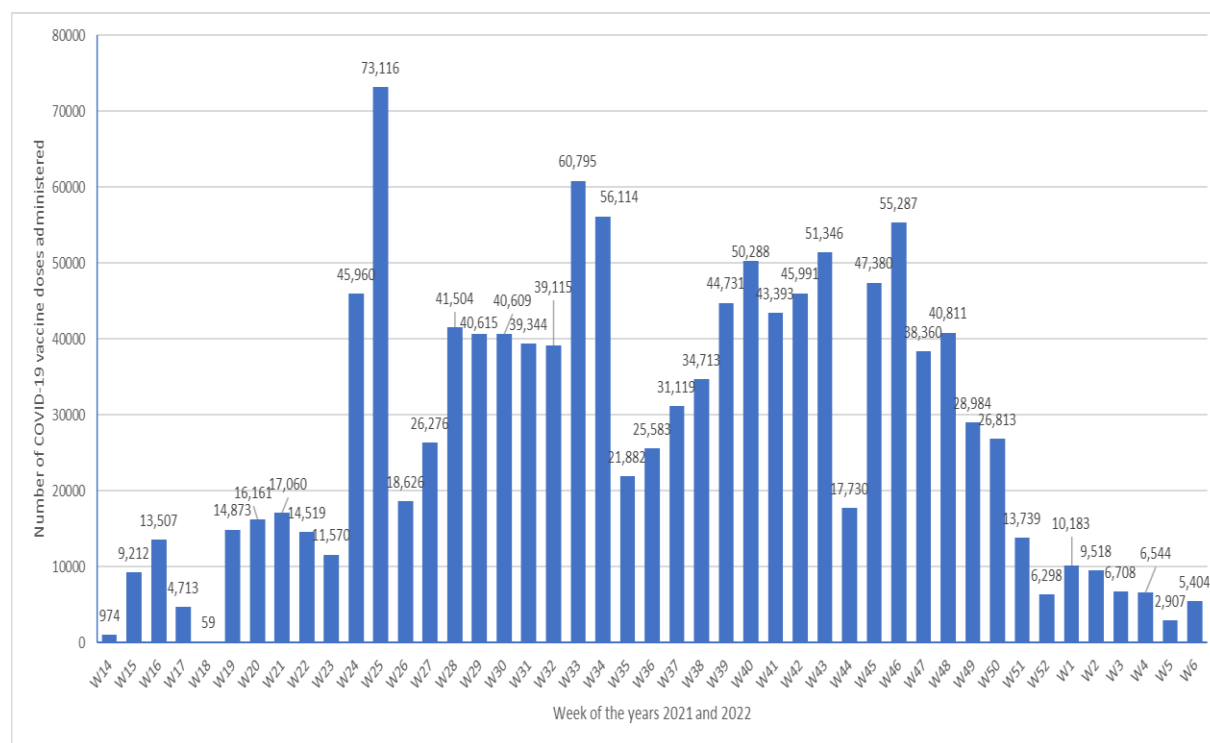


Tabela 2: Númeru ema sira ne'ebé simu vasina ho produktu vasina hotu (AstraZeneca, Sinovac, no Pfizer) no EADI tuir sexu iha kada munisípiu iha Timor-Leste, atualizada to'o 10:00 hrs 15/02/2022

Municipality	Number Vaccinated									AEFI		
	First Dose			Second Dose			Third & Booster			Male	Female	Total
	Male	Female	Total	Male	Female	Total	Male	Female	Total			
Dili	122,117	103,952	226,069	109,723	97,029	206,752	5,237	2,923	8,160	14	26	40
Aileu	12,932	12,393	25,325	10,014	9,964	19,978	-	-	-	1	1	2
Ainaro	14,426	14,015	28,441	11,198	11,344	22,542	-	-	-	0	0	0
Baucau	30,649	31,248	61,897	25,870	26,436	52,306	213	44	257	0	0	0
Bobonaro	22,116	21,993	44,109	15,512	15,245	30,757	-	-	-	4	6	10
Covalima	19,376	19,563	38,939	15,579	15,499	31,078	-	-	-	7	6	13
Ermera	27,436	25,472	52,908	20,705	19,613	40,318	-	-	-	0	0	0
Lautem	14,168	15,427	29,595	11,365	13,124	24,489	-	-	-	2	0	2
Liquica	18,069	18,494	36,563	14,943	15,385	30,328	14	18	32	0	1	1
Manatuto	12,328	11,673	24,001	9,360	9,137	18,497	-	-	-	2	0	2
Manufahi	14,881	14,150	29,031	12,007	11,608	23,615	-	-	-	1	2	3
Viqueque	20,198	21,322	41,520	17,557	19,010	36,567	-	-	-	6	0	6
ZEEMS (Oecusse)	17,604	18,667	36,271	15,079	15,925	31,004	-	-	-	0	0	0
Total (without Dili)	224,183	224,417	448,600	179,189	182,290	361,479	227	62	289	23	16	39
Total (Timor-Leste)	346,300	328,369	674,669	288,912	279,319	568,231	5,464	2,985	8,449	37	42	79

**Figura 2: Progresu semanal imunizasaun COVID-19 iha Timor-Leste atualizada to'o 10:00 hrs 13/02/2022**



**Tabela 3: Númeru populasaun idade 12 to'o <18 no liu\* ne'ebé simu vasina Pfizer no kobertura tuir munisípiu iha Timor-Leste, atualizada to'o 10:00hrs 15/02/2022**

Municipality	12to <18y Population	First Dose				Second Dose			
		12 to <18y Students	12 to <18y Non-students	Total	Coverage	12 to <18y Students	12 to <18y Non-students	Total	Coverage
Dili	41,822	37,563	43	37,606	89.9%	30,146	20	30,166	72.1%
Aileu	7,770	-	-	-	0.0%	-	-	-	0.0%
Ainaro	10,253	-	-	-	0.0%	-	-	-	0.0%
Baucau	18,189	-	-	-	0.0%	-	-	-	0.0%
Bobonaro	14,466	-	-	-	0.0%	-	-	-	0.0%
Covalima	9,729	-	-	-	0.0%	-	-	-	0.0%
Ermera	20,564	-	-	-	0.0%	-	-	-	0.0%
Lautem	10,447	-	-	-	0.0%	-	-	-	0.0%
Liquica	11,137	-	-	-	0.0%	-	-	-	0.0%
Manatuto	7,108	-	-	-	0.0%	-	-	-	0.0%
Manufahi	8,267	-	-	-	0.0%	-	-	-	0.0%
Viqueque	11,490	-	-	-	0.0%	-	-	-	0.0%
ZEEMS (Oecusse)	10,565	-	-	-	0.0%	-	-	-	0.0%
Total (without Dili)	139,985	-	-	-	0.0%	-	-	-	0.0%
<b>Total (Timor-Leste)</b>	<b>181,807</b>	<b>37,563</b>	<b>43</b>	<b>37,606</b>	<b>20.7%</b>	<b>30,146</b>	<b>20</b>	<b>30,166</b>	<b>16.6%</b>

\*Based on 2021 population projections

**Total Vaccinated (both doses) 67,772**



Tabela 4: Númeru ema individuu entre populasaun elijivel sira (tinan 18 no liu\*) ne'ebé vasinadu ona ho vasina COVID-19 AstraZeneca no Sinovac iha Timor-Leste no kobertura atualizada to'o 10:00hrs 15/02/2022

Municipality	Eligible Population			Number vaccinated & Coverage																	
	High Risk Groups (20% Pop.)	18-59y no comorbidity (80% Pop.)	Total	First Dose						Second Dose						Booster Dose					
				High Risk Groups (20% Pop.)	Coverage	18-59y no comorbidity (80% Pop.)	Coverage	Total	Coverage	High Risk Groups (20% Pop.)	Coverage	18-59y no comorbidity (80% Pop.)	Coverage	Total	Coverage	High Risk Groups (20% Pop.)	Coverage	18-59y no comorbidity (80% Pop.)	Coverage	Total	Coverage
Dili	29,980	183,822	213,802	53,665	179.0%	134,798	73.3%	188,463	88.1%	34,481	115.0%	142,105	77.3%	176,586	82.6%	3388	1.6%	4761	2.2%	8149	3.8%
Alieu	6,292	24,943	31,235	13,004	206.7%	12,321	49.4%	25,325	81.1%	10,889	173.1%	9,089	36.4%	19978	64.0%	0	0.0%	0	0.0%	0	0.0%
Ainaro	7,410	27,726	35,136	6,730	90.8%	21,711	78.3%	28,441	80.9%	5,108	68.9%	17,434	62.9%	22542	64.2%	0	0.0%	0	0.0%	0	0.0%
Baucau	18,141	55,175	73,316	17,526	96.6%	44,371	80.4%	61,897	84.4%	13,360	73.6%	38,946	70.6%	52306	71.3%	247	0.3%	10	0.0%	257	0.4%
Bobonaro	13,268	43,476	56,744	11,083	83.5%	33,026	76.0%	44,109	77.7%	7,401	55.8%	23,356	53.7%	30757	54.2%	0	0.0%	0	0.0%	0	0.0%
Covalima	8,725	31,503	40,228	10,211	117.0%	28,728	91.2%	38,939	96.8%	7,312	83.8%	23,766	75.4%	31078	77.3%	0	0.0%	0	0.0%	0	0.0%
Ermera	14,350	60,793	75,143	11,054	77.0%	41,854	68.8%	52,908	70.4%	6,745	47.0%	33,573	55.2%	40318	53.7%	0	0.0%	0	0.0%	0	0.0%
Lautem	8,455	27,963	36,418	8,493	100.4%	21,102	75.5%	29,595	81.3%	6,927	81.9%	17,562	62.8%	24489	67.2%	0	0.0%	0	0.0%	0	0.0%
Liquica	9,588	35,597	45,185	9,195	95.9%	27,368	76.9%	36,563	80.9%	7,092	74.0%	23,226	65.3%	30328	67.1%	32	0.1%	0	0.0%	32	0.1%
Manatuto	6,701	21,718	28,419	6,879	102.7%	17,122	78.8%	24,001	84.5%	4,832	72.1%	13,603	62.9%	18497	65.1%	0	0.0%	0	0.0%	0	0.0%
Manufahi	7,595	25,766	33,361	9,712	127.9%	19,319	75.0%	29,031	87.0%	5,466	124.6%	14,149	54.9%	23615	70.8%	0	0.0%	0	0.0%	0	0.0%
Viqueque	11,034	32,905	43,939	12,542	113.7%	28,978	88.1%	41,520	94.5%	10,556	95.7%	26,011	79.0%	36567	83.2%	0	0.0%	0	0.0%	0	0.0%
ZEEMS (Dicasse)	9,408	32,534	41,942	11,630	123.6%	24,641	75.7%	36,271	86.5%	8,143	86.6%	22,859	70.3%	31,004	73.9%	0	0.0%	0	0.0%	0	0.0%
Total (without Dili)	120,967	420,098	541,065	128,059	105.9%	320,541	76.3%	448,600	82.9%	97,833	80.9%	263,646	62.8%	361,479	66.8%	279	0.1%	10	0.0%	289	0.1%
Total (Timor Leste)	150,947	603,920	754,867	181,724	120.4%	455,339	75.40%	637,063	84.4%	132,314	87.7%	405,751	67.2%	538,065	71.3%	3667	0.5%	4771	0.6%	8438	1.1%

\*Based on 2021 population projections. Population with Comorbidity 12.5% among 18-59y based on 2016 DHS data

High Risk Groups (20% of the population) - Healthcare staff, other front line staff, aged 65y and above, and 18-59y with comorbidity

18-59y with no comorbidity (80% of the population)

Total Vaccinated (all doses) 1,183,566 (Total No. of third Doses - 11 )

## ANALIZE SITUASAUN

- Timor-Leste atualmente iha hela faze inisial iha onda transmisaun datoluk ne'ebé mosu tanba Omicron. Númeru kazu sei nafatin aumenta no kazu óbitu rua mak relata ona hafoin semana 13. Ida ne'e fo hanoin fali ita kona ba presan ne'ebé ita enfrenta hela, liuliu se kazu barak liu liu husi área remota sira, iha ne'ebé kapasidade facilidade saúde nian limitadu.
- Globalmente no iha Rejiaun Sedeste Aziátiku OMS nian (SEAR), nasaun barak mak experiensia hela diminuisaun kazu relatadu. Jeralmente, kazu ne'ebé relatadu menus iha nasaun SEAR sira, maibe Indonézia, Mianmar, Sri Lanka, Tailândia no Timor-Leste relata númeru kazu ne'ebé aumenta. Ita presiza hein semana balun tan hodi molok ita hare diminuisaun númeru kazu foun hanesan saida mak ita haree iha nasaun seluk.
- Ba Timor-Leste, ita presiza kontinua mellora ita-nia kapasidade vijilánsia no teste, no prepara-an ba aumenta kazu todan no krítiku.

## REKURSU NE'EBÉ DISPONIVEL

- [Ba públiku jerál no profesionál saúde sira kona-ba prevensaun, tratamentu, no vasina, nsst.](#)
- [Rekomendasaun OMS ba Desizaun Relasiona ho COVID-19](#)
- Kursu gratuita iha Tetum – [OpenWHO.org](#)

## KONTAKTU MÉDIA NO INFORMASAUN KONA-BA COVID-19

- Ministériu Saúde estabelese ona númeru *hotline* – 119 – ba COVID-19 ne'ebé maka ema hotu-hotu bele kontaktu hodi hetan informasaun relasiona ho COVID-19
- Alende ne'e, [Pájina Facebook MS](#) nian fornese atualizasaun loloos kona-ba desenvolvimentu COVID-19 iha rai laran
- OMS Timor-Leste liuhusi nia [Pájina Facebook](#) no [Twitter](#) mós disemina informasaun kona-ba medida preventiva, pergunta no resposta, *myth-buster* no atualizasaun ikus kona-ba COVID-19 iha mundu tomak no iha rai laran. Ba media no pedidu ba entrevista bele manda ba [hasane@who.int](mailto:hasane@who.int) ka [wcotimorleste@who.int](mailto:wcotimorleste@who.int)