



Coronavirus Disease 2019 (COVID-19)

Situation Report – 140

Timor-Leste

*Data as reported on 22 February 2022

SITUATION IN NUMBERS

TIMOR-LESTE



Cumulative
22,485 (608)



Recovered (new)
21,423 (1,227)



Active cases
937



Deaths (new)
125 (1)

VACCINATION STATUS



1st dose - **677,088**
Coverage - **84.6%****



2nd dose - **571,230**
Coverage - **71.6%****

*As per data released by the [Ministry of Health](#)

**For adult population 18 years and above

GLOBAL



Cases
423,437,674



Deaths
5,878,328

VACCINATION



10,407,359,583 doses

HIGHLIGHTS

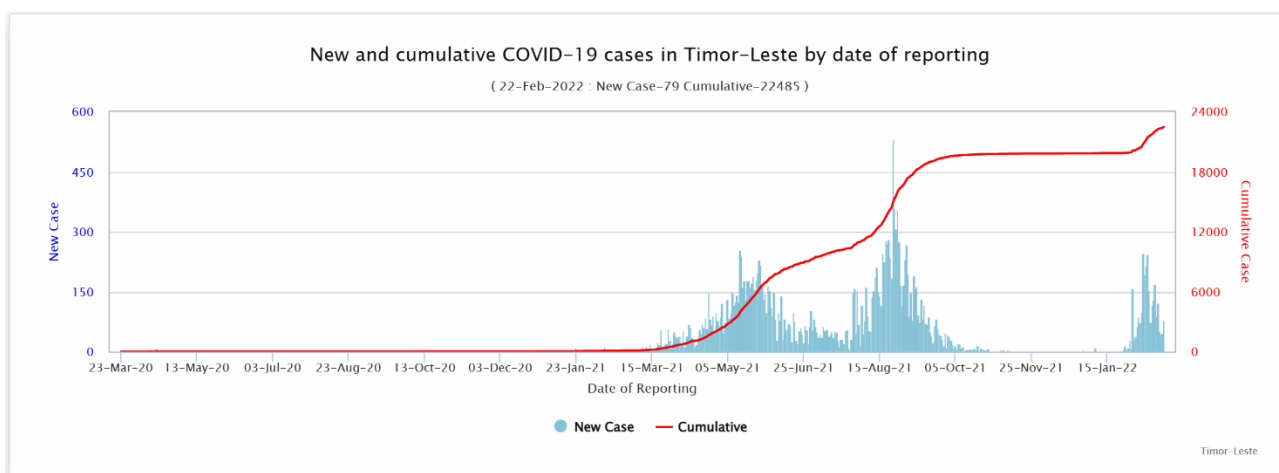
- Since the last edition of the weekly situation report, the Ministry of Health (MoH) reported **608** new cases of COVID-19, **1,227** recoveries and **1** death. The number of incident cases is reduced by 46% as compared with the last reporting period.
- WHO continues to extend updated evidence and shared recent guidance on Contact Tracing and Quarantine in the context of Omicron and updated Standard Operating Procedures (SOPs) across different pillars of COVID-19 response and “Health Guidelines for conducting Elections during COVID-19 Pandemic”
- Following the Airport simulation exercise WHO supported adaptation and printing of Passengers Entry Card with the intent to link the traveller’s data base with Pillar 3 for improved contact tracing.
- WHO donates and pre-positions 4 metric tons of different PPE items and 2 metric tons of hospital consumables at SAMES as part of ongoing comprehensive COVID-19 response.
- UNDP Timor-Leste officially handed over 71 different categories of medical supplies procured on behalf of the Ministry of Health. These large quantities of essential medicines will further improve the readiness of health system for COVID-19 but importantly for essential health services.

- Timor Leste received 100,620 additional doses of the Pfizer vaccine through COVAX as part of the donation from USA and 259,740 doses from the Government of Australia as part of their commitment to support COVID-19 vaccination in Timor-Leste.
- On 18 February, the Government of Timor-Leste officially launched the Pfizer vaccine for 12 to 17 years age groups to other 12 municipalities in the country from Liquica at a school where 867 eligible students were vaccinated.
- With funding support of Government of Japan, UNICEF handed over three refrigerated vehicles to SAMES to support distribution of vaccines across the country. Continues support is extended to SAMES for monitoring the storage and transportation.
- WHO shared an in-depth review and analysis of Vaccine Utilization and availability by expiry of vaccines (AZ) at national and municipality level. An accelerated plan/microplan for enhancing vaccine coverage (2 doses AZ among Adults) is developed and will be supported by UNICEF and WHO. Municipalities with lower coverage of AZ and hard to reach communities will be specifically targeted.
- WHO deployed international Public Health Consultants in every municipality are facilitating vaccination drives in each of the municipalities through multiple approaches including door to door campaigns. Additional to COVID-19 vaccination, these consultants are supporting the Routine Immunization as well.
- Community Mobilization and advocacy at municipality level are further enhanced with support for schools' campaign, vehicle based miking at the community level and dedicated technical personnel engaged by UNICEF in each of the municipalities. The aim is to increase awareness to bolster AZ coverage, rolling out Pfizer in schools and Booster in municipalities.

EPIDEMIOLOGICAL UPDATES

1. New and cumulative cases, as of 22 Feb. 2022

As shown by the epi curve below, significant number of incident cases continues to report across the country but starts to shown a trend of declining.



2. Distribution of cases and deaths by municipalities

Distribution of newly reported, recovered, and active cases by municipalities, as of 22 February 2022)

Municipality	New case (16-22 Feb. 2022)	Last 7-day % change (case)*	Cumulative case	New recovered (16-22 Feb. 2022)	Cumulative recovered	New death (16-22 Feb. 2022)	Cumulative death	Active Cases (22 Feb. 2022)
Aileu	3	-57	136	0	125	0	1	10
Ainaro	47	100	296	0	224	0	3	69
Baucau	33	-8	1615	26	1561	0	7	47
Bobonaro	53	-5	734	56	663	0	9	62
Covalima	13	86	811	6	793	0	3	15
Dili	426	-56	16004	1100	15220	1	84	700
Ermera	6	100	1120	2	1113	0	2	5
Lautem	2	100	187	1	181	0	5	1
Liquica	5	150	132	2	126	0	1	5
Manatuto	15	-25	240	20	221	0	2	17
Manufahi	2	-50	271	3	268	0	0	3
RAEOA	3	-50	420	11	414	0	3	3
Viqueque	0	0	519	0	514	0	5	0
TOTAL	608	-46	22485	1227	21423	1	125	937

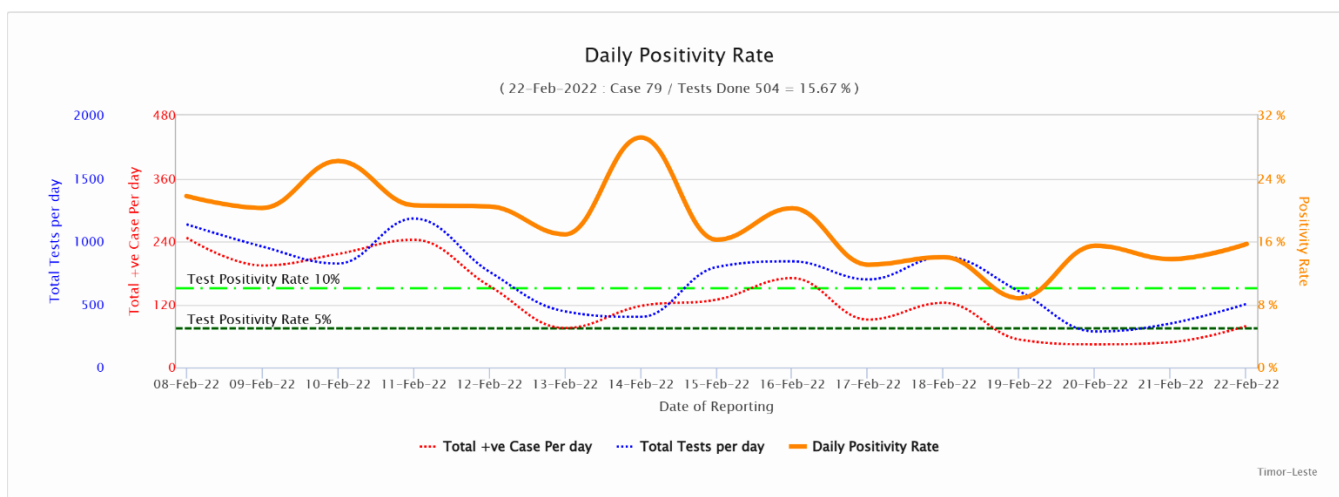
*Change in new COVID-19 cases as compared with the previous 7 days

- A total of 608 new cases are reported during the current reporting period (16-22 Feb. 2022), as compared 1,129 cases reported during the previous reporting period (9-15 Feb. 2022), with a 46% reduction. Majority cases (70%) are reported from Dili, while all other municipalities except Viqueque have reported incident cases.
- One COVID-19 related death has been reported from Timor-Leste during this reporting period, which is the third death during the current wave of transmission.
- The number of active cases has been 937 as of 22 Feb. 2022.

3. Number of test and test positivity rates

During the current reporting period from 16-22 Feb. 2022, 4,158 tests were conducted, as compared to 5,364 tests in the previous 7 days.

The test positive rate of this reporting period is averaged as 14.6%, as compared with 21.0% of the previous reporting period. The figure below illustrates the daily number of test, cases and test positivity proportion. The test positivity fluctuates but shows a downward trend.

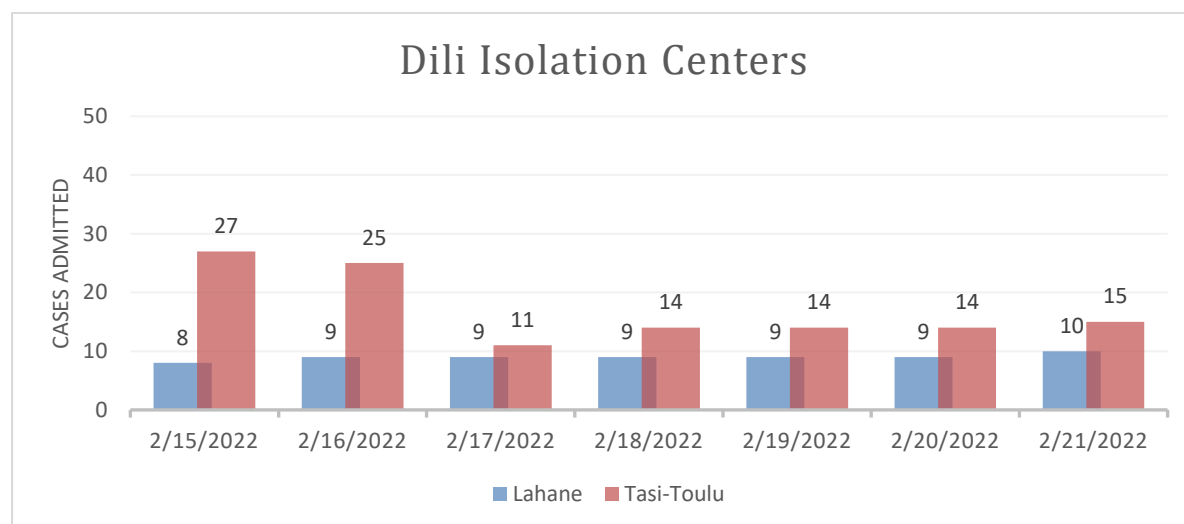


CASE MANAGEMENT

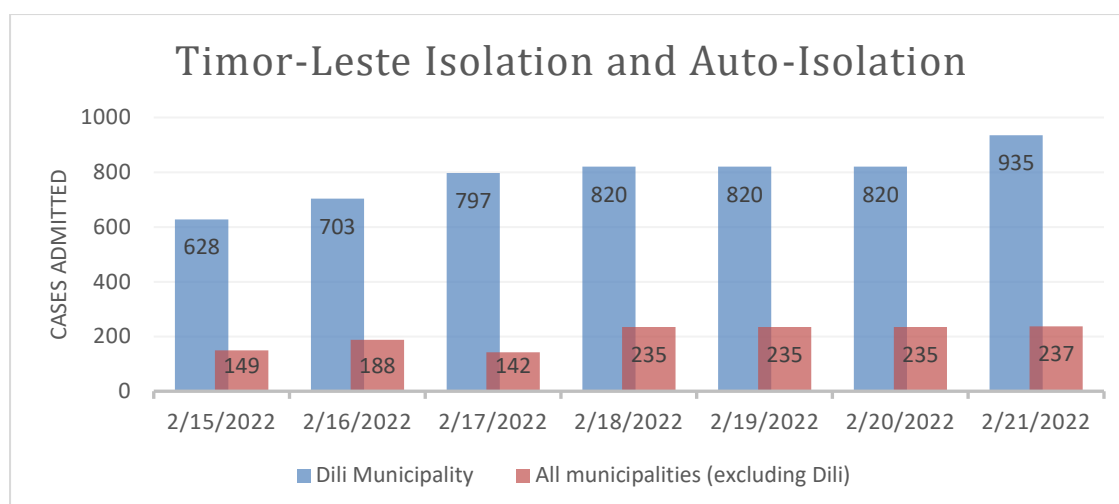
Vera Cruz Isolation Center has reverted back to receive COVID-19 patients recently. Lahane Isolation Center is treating moderate patients with risk factors and critical cases, while part of the Tasi-Tolu Center admits mild and moderate cases with risk factors. From the figure below, it shows that the number of patients at the Lahane and Tasi-Tolu has been reduced.

The current bed occupancy for Lahane Isolation center is 45%.

The current bed occupancy for Tasi Tolu Isolation center is 6%.



The chart below shows the total number of people admitted to isolation centres and auto-isolation (at home) in 12 municipalities compared to Dili. Throughout Timor-Leste, patients admitted to isolation centres and at home isolation have been gradually increasing.



VACCINATION

At the time of writing this report (22/02/2022 morning), in total, 1,258,691 COVID-19 vaccine doses comprising 677,088 first doses (coverage 84.6% among population aged 18 years and above and 21.3% among the population aged 12 years to <18 years), 571,230 second doses (coverage 71.6% among population aged 18 years and above and 16.8% among the population aged 12 years to <18 years), 10,362 (coverage 1.4% among population aged 18 years) booster doses were administered in Timor-Leste. The breakdown of the number of doses administered and coverage by vaccine product and vaccine dose is illustrated in Table 1.

Table 1: Number of COVID-19 vaccine doses administered and coverage in Timor-Leste by vaccine product and dose as of 10:00hrs 22/02/2022

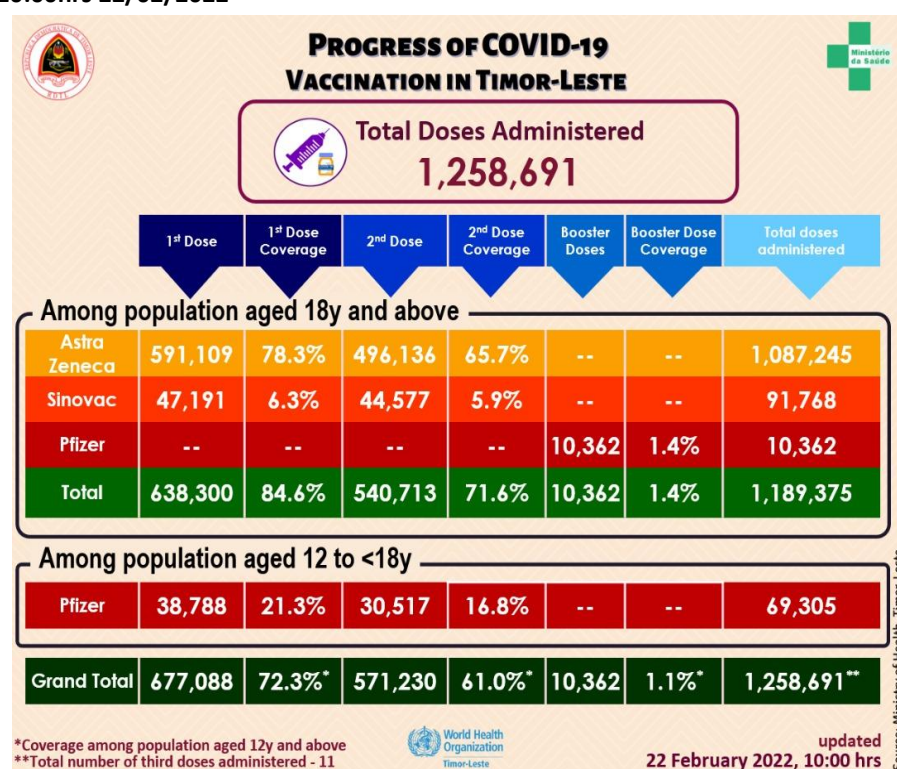


Figure 1: Coverage of COVID-19 vaccination among population aged 18 years and above by municipality in Timor-Leste as of 10:00hrs 22/02/2022

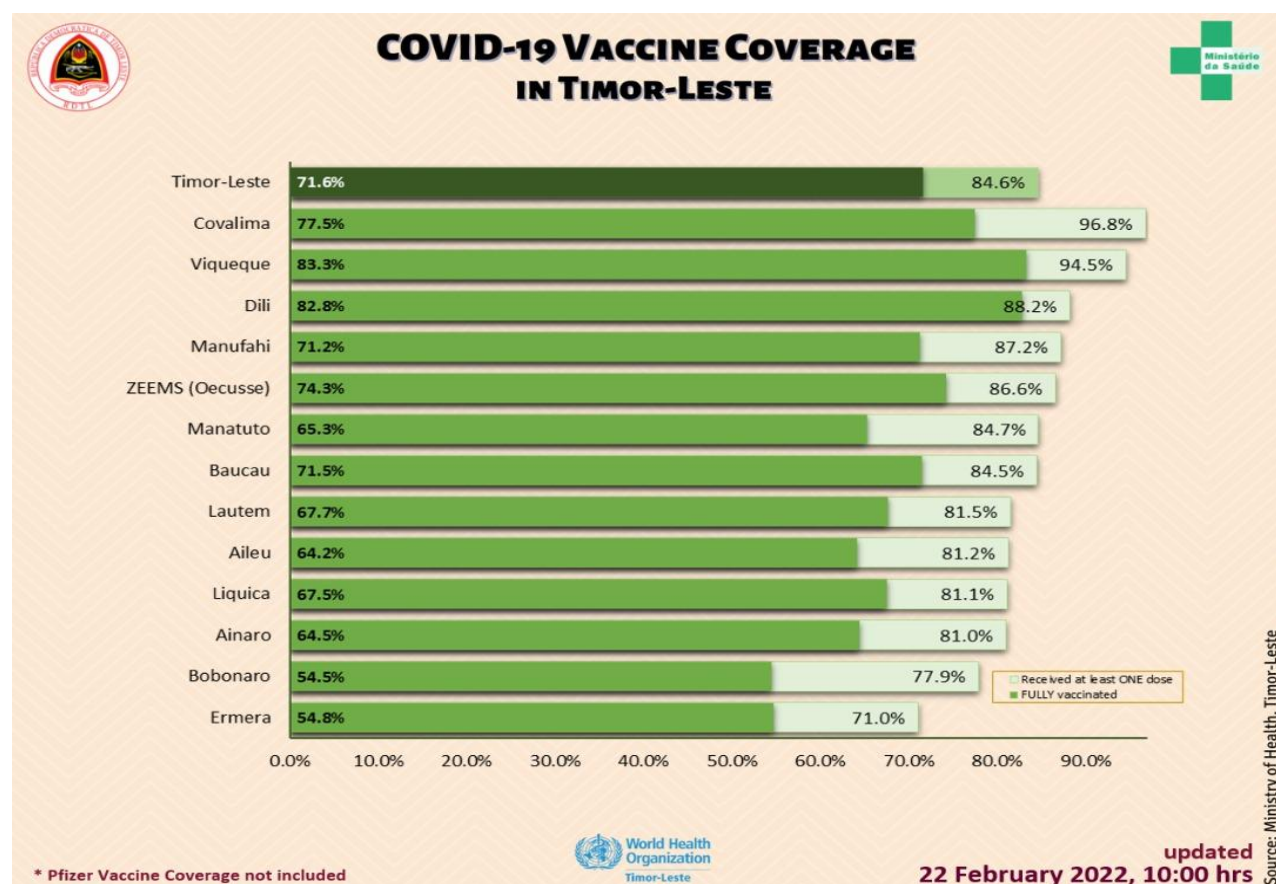


Table 2: Total number of individuals vaccinated with all the vaccine products (AstraZeneca, Sinovac, and Pfizer) and AEFI by sex by district in Timor-Leste as of 10:00 hrs 22/02/2022

Municipality	Number Vaccinated									AEFI		
	First Dose			Second Dose			Third & Booster			Male	Female	Total
	Male	Female	Total	Male	Female	Total	Male	Female	Total			
Dili	122,344	104,215	226,559	110,122	97,467	207,589	6,076	3,360	9,436	14	26	40
Aileu	12,947	12,415	25,362	10,044	10,013	20,057	-	-	-	1	1	2
Ainaro	14,435	14,035	28,470	11,239	11,406	22,645	-	-	-	0	0	0
Baucau	30,667	31,269	61,936	25,924	26,497	52,421	443	136	579	0	0	0
Bobonaro	22,158	22,033	44,191	15,576	15,353	30,929	-	-	-	4	6	10
Covalima	19,379	19,566	38,945	15,617	15,547	31,164	-	-	-	7	6	13
Ermera	27,673	25,716	53,389	21,077	20,087	41,164	-	-	-	0	0	0
Lautem	14,195	15,474	29,669	11,417	13,222	24,639	-	-	-	2	0	2
Liquica	18,572	18,927	37,499	15,018	15,490	30,508	65	32	97	0	1	1
Manatuto	12,352	11,708	24,060	9,386	9,179	18,565	-	-	-	2	0	2
Manufahi	14,920	14,179	29,099	12,069	11,699	23,768	-	-	-	1	2	3
Viqueque	20,223	21,344	41,567	17,581	19,039	36,620	165	96	261	6	0	6
ZEEMS (Oecusse)	17,625	18,717	36,342	15,145	16,016	31,161	-	-	-	0	0	0
Total (without Dili)	225,146	225,383	450,529	180,093	183,548	363,641	673	264	937	23	16	39
Total (Timor-Leste)	347,490	329,598	677,088	290,215	281,015	571,230	6,749	3,624	10,373	37	42	79

Figure 2: Weekly progress of COVID-19 vaccination in Timor-Leste as of 10:00 hrs 20/02/2022

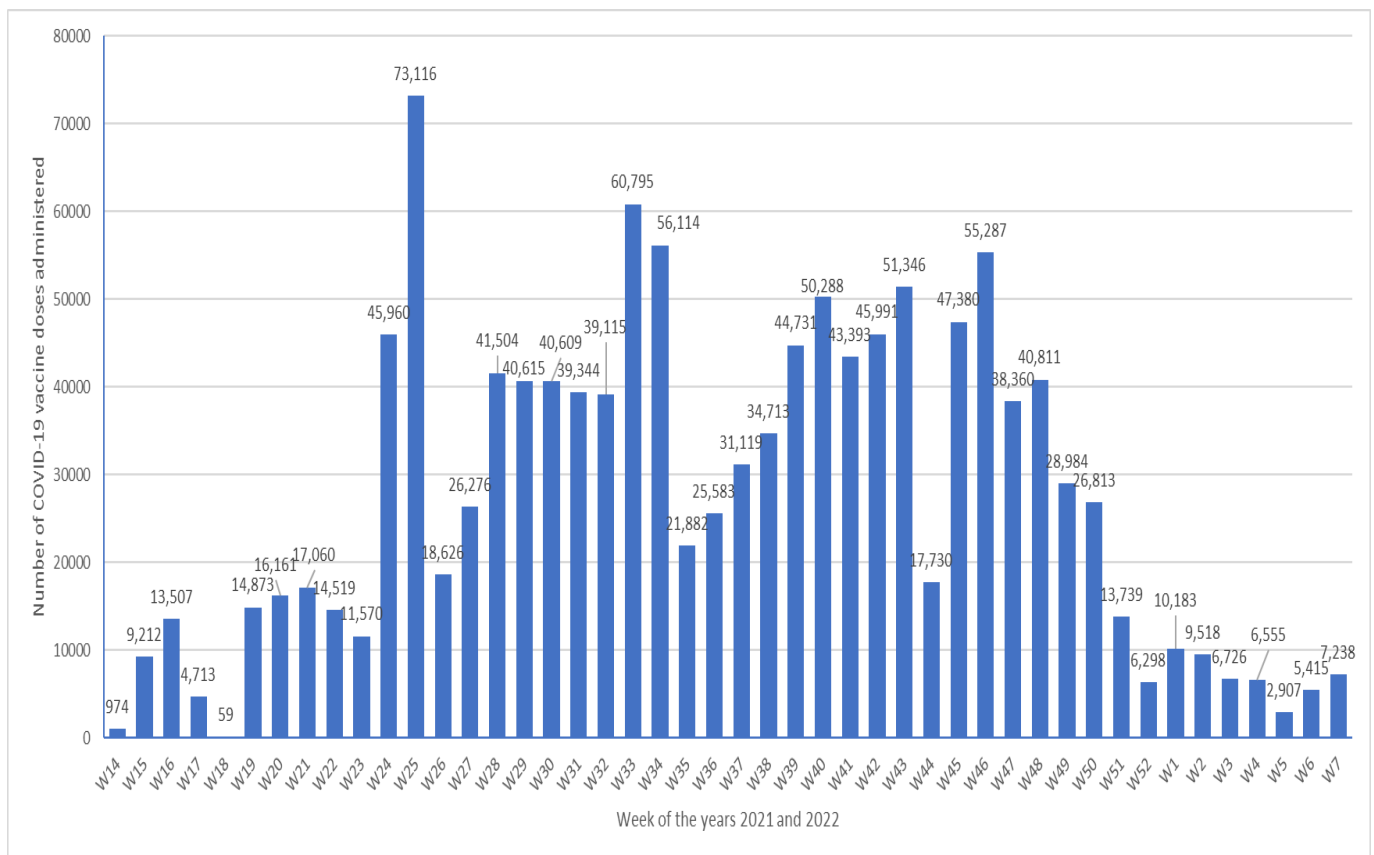


Table 3. Number of individuals among population aged 12 years to <18 years and above* vaccinated with Pfizer vaccine and coverage by district in Timor-Leste as of 10:00hrs 22/02/2022

Municipality	12to <18y Population	First Dose				Second Dose			
		12 to <18y Students	12 to <18y Non-students	Total	Coverage	12 to <18y Students	12 to <18y Non-students	Total	Coverage
Dili	41,822	37,851	43	37,894	90.6%	30,492	23	30,515	73.0%
Aileu	7,770	-	-	-	0.0%	-	-	-	0.0%
Ainaro	10,253	-	-	-	0.0%	-	-	-	0.0%
Baucau	18,189	-	-	-	0.0%	-	-	-	0.0%
Bobonaro	14,466	-	-	-	0.0%	-	-	-	0.0%
Covalima	9,729	-	-	-	0.0%	-	-	-	0.0%
Ermera	20,564	-	-	-	0.0%	-	-	-	0.0%
Lautem	10,447	-	-	-	0.0%	-	-	-	0.0%
Liquica	11,137	861	-	861	7.7%	1	-	1	0.0%
Manatuto	7,108	-	-	-	0.0%	-	-	-	0.0%
Manufahi	8,267	-	-	-	0.0%	-	-	-	0.0%
Viqueque	11,490	-	2	2	0.0%	1	-	1	0.0%
ZEEMS (Oecusse)	10,565	-	-	-	0.0%	-	-	-	0.0%
Total (without Dili)	139,985	861	2	863	0.6%	2	-	2	0.0%
Total (Timor-Leste)	181,807	38,712	45	38,757	21.3%	30,494	23	30,517	16.8%

*Based on 2021 population projections

Total Vaccinated (both doses) 69,274

Table 4. Number of individuals among population aged 18 years and above* vaccinated with AstraZeneca and Sinovac vaccines and coverage by district in Timor-Leste as of 10:00hrs 22/02/2022

Municipality	Eligible Population			Number vaccinated & Coverage																	
	High Risk Groups (20% Pop.)	18-59y no comorbidity (80% Pop.)	Total	First Dose						Second Dose						Booster Dose					
				High Risk Groups (20% Pop.)	Coverage	18-59y no comorbidity (80% Pop.)	Coverage	Total	Coverage	High Risk Groups (20% Pop.)	Coverage	18-59y no comorbidity (80% Pop.)	Coverage	Total	Coverage	High Risk Groups (20% Pop.)	Coverage	18-59y no comorbidity (80% Pop.)	Coverage	Total	Coverage
Dili	29,980	183,822	213,802	53,601	170.8%	125,063	73.5%	188,664	88.2%	34,408	115.1%	142,576	77.6%	177,074	82.8%	3777	1.8%	5648	2.6%	9425	4.4%
Aileu	6,292	24,943	31,235	13,021	206.9%	12,341	49.5%	25,362	81.2%	10,940	173.9%	9,117	36.6%	20057	64.2%	0	0.0%	0	0.0%	0	0.0%
Ainero	7,410	27,726	35,136	6,731	90.8%	21,739	78.4%	28,470	81.0%	5,132	69.3%	17,513	63.2%	22645	64.5%	0	0.0%	0	0.0%	0	0.0%
Baucau	18,141	55,175	73,316	17,536	96.7%	44,400	80.5%	61,936	84.5%	13,395	73.8%	39,026	70.7%	52421	71.5%	545	0.7%	34	0.0%	379	0.8%
Bobonaro	13,268	43,476	56,744	11,087	83.6%	33,104	76.1%	44,191	77.9%	7,418	55.9%	23,511	54.1%	30929	54.5%	0	0.0%	0	0.0%	0	0.0%
Covalima	8,725	31,503	40,228	10,211	117.0%	28,734	91.2%	38,945	96.8%	7,328	84.0%	23,836	75.7%	31164	77.5%	0	0.0%	0	0.0%	0	0.0%
Ermera	14,350	60,793	75,143	11,122	77.5%	42,267	69.5%	53,389	71.0%	6,904	48.1%	34,260	56.4%	41164	54.8%	0	0.0%	0	0.0%	0	0.0%
Lautem	8,455	27,963	36,418	8,499	100.5%	21,170	75.7%	29,669	81.5%	6,959	82.3%	17,680	63.2%	24639	67.7%	0	0.0%	0	0.0%	0	0.0%
Liquica	9,588	35,507	45,095	9,212	96.1%	27,426	77.0%	36,638	81.1%	7,115	74.2%	23,392	65.7%	30507	67.5%	97	0.2%	0	0.0%	97	0.2%
Manatuto	6,701	21,718	28,419	6,882	102.7%	17,175	79.1%	24,060	84.7%	4,840	72.2%	13,725	63.2%	18365	65.3%	0	0.0%	0	0.0%	0	0.0%
Manufahi	7,595	25,766	33,361	9,724	128.0%	19,375	75.2%	29,099	87.2%	9,509	125.2%	14,259	55.3%	23768	71.2%	0	0.0%	0	0.0%	0	0.0%
Viqueque	11,034	32,905	43,939	12,546	113.7%	28,080	88.1%	41,535	94.5%	10,577	95.0%	26,042	79.1%	36619	83.3%	256	0.6%	5	0.0%	261	0.6%
ZEEMS (Decusse)	9,408	32,534	41,942	11,639	123.7%	24,703	75.9%	36,342	86.6%	8,170	86.9%	22,985	70.6%	31,161	74.3%	0	0.0%	0	0.0%	0	0.0%
Total (without Dili)	120,967	420,098	541,065	128,213	106.0%	321,423	76.5%	449,636	83.1%	98,293	81.3%	265,346	63.2%	363,639	67.2%	898	0.2%	39	0.0%	937	0.2%
Total (Timor Leste)	150,947	603,920	754,867	181,814	120.4%	456,486	75.59%	638,300	84.6%	132,791	88.0%	407,922	67.5%	540,711	71.6%	4675	0.6%	5687	0.8%	10362	1.4%

*Based on 2021 population projections. Population with Comorbidity 12.5% among 18-59y based on 2016 DHS data
 High Risk Groups (20% of the population) - Healthcare staff, other front line staff, aged 60y and above, and 18-59y with comorbidity
 18-59y with no comorbidity (80% of the population)

Total Vaccinated (all doses) 1,189,375 (Total No. of third Doses - 11)

SITUATION ANALYSIS

- There are signs the current wave of COVID-19 transmission is slowing down or declining, though more time is needed to observe and validate it. This is evidenced by the reduced number of incidence cases particularly in the capital area, declining test positivity rates and generally stable number of patients in the treatment centers.
- We do have the reasons to believe the above trend is real and true, given the similar trends observed in other countries, the relatively high vaccination coverage (in Dili and several other municipalities), and the relatively young population structure of Timor-Leste.
- However, we should continue our efforts to strengthen the surveillance and testing so that more people infected with the virus could be identified and isolated, close contacts quarantined and the epidemiological trend understood. As always, efforts should continue to improve readiness for care and treatment of critical and severe cases.

AVAILABLE RESOURCES

- [For public and professionals on prevention, treatment, and vaccination etc.](#)
- [WHO Recommendations for COVID-19 Related Decisions](#)
- WHO Free Courses in Tetum – [OpenWHO.org](#)

COVID-19 INFORMATION AND MEDIA QUERIES

- The MoH has established a hotline number – 119 – for COVID-19 on which people can call to get any COVID-19 related information.
- Additionally, [MoH Facebook page](#) provides timely updates on COVID-19 developments in the country.
- WHO Timor-Leste through its [Facebook page](#) and [Twitter handle](#) also disseminates information on preventive measures, questions and answers, myth-busters and latest updates on COVID-19 globally and nationally.
- For media queries and interviews requests can be sent to hasane@who.int