

Moras virus Corona 2019 (COVID-19)

Relatóriu Situasaun – 140

Timor-Leste



World Health
Organization

Timor-Leste

*Dadus relata to'o lora 22 Feveiru 2022

SITUASAUN IHA NÚMERU

TIMOR-LESTE



Kumulativu
22,485 (608)



Rekuperadu (foun)
21,423 (1,227)



Kazu ativu
937



Óbitu (foun)
125 (1)

GLÓBÁL



Kazu
423,437,674



Óbitu
5,878,328

PROGRESU IMUNIZASAUN COVID-19



Doze 1^a – **677,088**
Kobertura – **84.6%****



Doze 2^a – **571,230**
Kobertura – **71.6%****

* Bazeia ba dadus ne'ebé pública husi [Ministerio da Saúde](#)

** Ba populasaun adultu tinan 18 ba leten

PROGRESU IMUNIZASAUN COVID-19



Doze vasina
10,407,359,583

SUMÁRIU

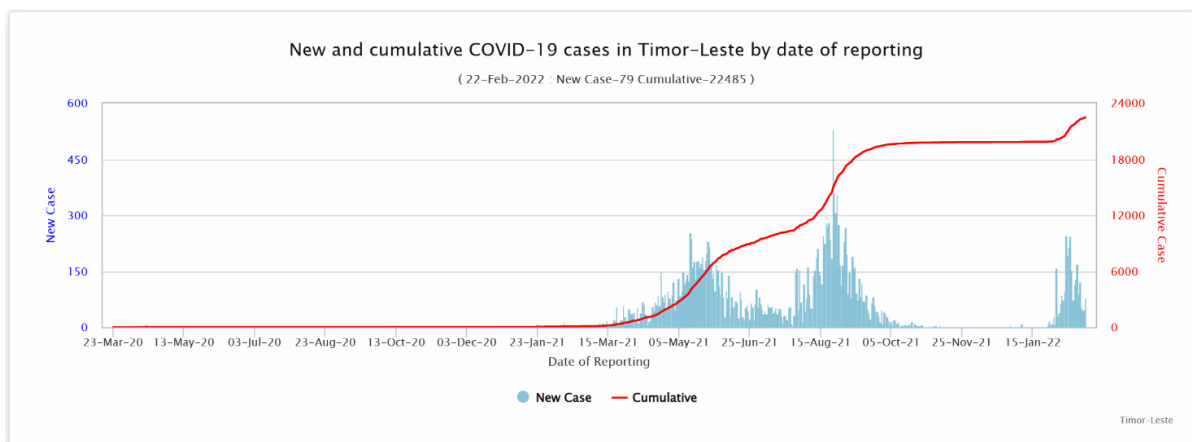
- Dezde edisaun ikus relatóriu situasaun, Ministeriu Saúde relata hamutuk **608** kazu foun COVID-19, kazu rekuperadu **1,227** no kazu óbitu **1**. Número kazu insidente tun 46% kompara ho períodu relatóriu ikus.
- OMS kontinua estende evidénsia atualizada no kompartilla orientasaun recente kona-ba Restreamentu Kontaktu no Kuarentena iha kontextu Omicron no Procedimentu Operasional Padraun (SOP) ne'ebé atualizadu iha pilar sira hotu ba responde ba COVID-19 no “Matadalan Saúde ba hala’o Eleisaun durante Pandemia COVID-19”
- Hafoin hala’o ezersísiu simulasaun iha Aeroportu, OMS apoiu adaptasaun no imprimi Kartaun Entrada ba Pasajeiru sira ho intensaun hodi liga dadus pasajeiru nian ho Pillar 3 hodi mellora restreamentu kontaktu.
- OMS fornese no pré-pozisiona item PPE oioin hamutuk tonelada métrika 4 no konsumível ospitalar hamutuk tonelada métrika 2 ba SAMES hanesan parte ba responde ba COVID-19 ne'ebé kompreensivu no sei kontinua.
- UNDP Timor-Leste ofisialmente entrega ona suprimentu médiku ho 71 kategoria diferente ne'ebé prokura ona hodi Ministériu Saúde nia naran. Medikamentu esensial ho kuantidade boot hirak ne'e sei hadi'ak liu tan sistéma saúde nia preparasaun ba COVID-19 no liu liu ba servisu saúde esensial sira.

- Timor-Leste simu ona adisional vasina Pfizer hamutuk doze 100,620 liu husi COVAX hanesan parte ida husi doasaun husi EUA no doze vasina hamutuk 259,740 husi Governu Austrália hanesan parte ida husi sira nia kompromisu ba suporta vasinasaun COVID-19 iha Timor-Leste.
- Iha loron 18 Feveireiru, Governu Timor-Leste ofisialmente lansa ona vasina Pfizer ba grupu idade 12 to'o 17 ba munisípiu 12 seluk iha rai laran husi Liquiça iha ne'ebé estudante elijivel nain-867 mak simu ona vasina.
- Ho apoiu finanseiru husi Governu Japaun, UNICEF entrega ona veikulu refrijeradu tolu ba SAMES hodi suporta distribuisaun vasina iha rai laran. Apoiu ne'ebé kontinua hela extende ona ba SAMES ba monitoramentu ba armazenamentu no transporte.
- OMS fahe ona revizaun no análise kona-ba Utilizasaun Vasina no disponibilidade vasina to'o nia data validade (AZ) iha nível nasional no municipal. Planu/mikroplanu id aida ne'ebé aseleradu hodi aumenta kobertura vasinal (AZ doze 2 entre adultu sira) desenvolve ona no sei hetan apoiu husi UNICEF no OMS. Munisípiu sira ho kobertura AZ ne'ebé ki'ik no comunidade/área sira ne'ebé susar atu asesu sei hetan atensaun liu.
- Asesor Internacional ba Saúde Pública sira ne'ebé OMS estasiona ona iha munisípiu hotu fasilita hela kampaña vasinasaun iha kada munisípiu liu husi dalan oioin inklui kampaña husi uma ba uma. Aleinde vasinasaun kontra COVID-19, asesor hirak ne'e mos apoiu Imunizasaun Rotina.
- Mobilizasaun Komunitária no advokasia iha nível municipal reforasa ona ho apoiu ba kampaña eskola nian, veikulu sira ho toa iha nível komunitáriu no dedikadu pesóal tékniku kontratadu husi UNICEF iha munisípiu ida idak. Nia objetivu mka hodi aumenta konsientizasaun hodi reforsa kobertura AZ, komesa vasina Pfizer iha eskola sira no *booster* iha munisípiu sira.

ATUALIZASAUN EPIDEMIOLÓJIKU

1. Kazu COVID-19 kumulativu no kazu foun, relata to'o loron 22 Feveireiru 2022

Hanesan hatudu iha gráfiku epi tuir mai ne'e, número kazu insidente sei kontinua relata iha rai laran maibe ho tendénsia desendente.



2. Distribuisaun kazu no kazu óbitu tuir munisípiu

Distribusaun kazu foun ne'ebé relata, kazu rekuperadu no kazu ativu tuir munisípiu, to'o loron 22 Feveireiru 2022

Munisípiu	Kazu foun (16-22 Feb. 2022)	Loron 7 - mudansa % (kazu)*	Kazu kumulativu	Kazu rekuperadu (16-22 Feb. 2022)	Kazu rekuperadu kumulativu	Kazu óbitu foun (16-22 Feb. 2022)	Kazu óbitu kumulativu	Kazu ativu (22 Feb. 2022)
Aileu	3	-57	136	0	125	0	1	10
Ainaro	47	100	296	0	224	0	3	69
Baucau	33	-8	1615	26	1561	0	7	47
Bobonaro	53	-5	734	56	663	0	9	62
Covalima	13	86	811	6	793	0	3	15
Dili	426	-56	16004	1100	15220	1	84	700
Ermera	6	100	1120	2	1113	0	2	5
Lautem	2	100	187	1	181	0	5	1
Liquica	5	150	132	2	126	0	1	5
Manatuto	15	-25	240	20	221	0	2	17
Manufahi	2	-50	271	3	268	0	0	3
RAEOA	3	-50	420	11	414	0	3	3
Viqueque	0	0	519	0	514	0	5	0
TOTAL	608	-46	22485	1227	21423	1	125	937

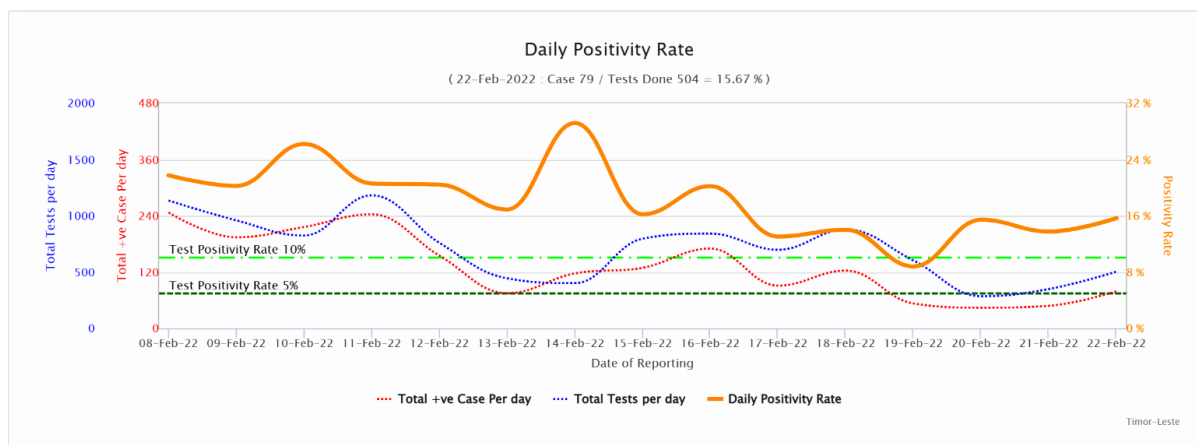
*Mudansa kazu COVID-19 kompara ho loron 7 ikus

- Total kazu foun hamutuk 608 ne'ebé relata iha períodu relatóriu (16-22 Feb. 2022), kompara ho kazu 1,129 ne'ebé relata iha periodu relatóriu ikus (9-15 Feb. 2022) ho redusaun 46%. Maioria husi kazu sira ne'e hotu (70%) detekta iha Dili, no seluk sira hotu exeptu Viqueque relata ona kazu insidente.
- Kazu óbitu hamutuk nain-1 mak relata ona iha períodu relatóriu ida ne'e, ne'ebé sai hanesan kazu óbitu datoluk iha onda transmisaun ida ne'e.
- Númeru kazu ativu agora to'o loron 22 Feveireiru 2022 hamutuk na'in-937.

3. Teste diáriu, taxa pozitivu no taxa teste positividade

Durante data relatóriu atuál ida ne'e husi loron 16-22 Feb. 2022, halo ona teste ba amostra 4,158 kompara ho loron 7 liu ba teste ba amostra hamutuk 5,364.

Taxa teste positividade husi periodu relatóriu ida ne'e ho médiu 14.6%, kompara ho 21.0% hosi periodu relatóriu liuba. Figura tuir mai ne'e hatudu proporsaun teste, kazu no positividade. Positividade teste flutua maibe hatudu tendénsia desendente.



JESTAUN KAZU COVID-19

Foin lalais ne'e Sentru Izolamentu Vera Cruz komesa simu fali ona pasiente COVID-19. Sentru Izolamentu Lahane atende pasiente moderadu sira ho fator risku no kazu krítiku sira, enkuantu parte husi Tasi-Tolu admite kazu kma'an no moderadu sira ho fator risku. Husi figura tuir mai ne'e, hatudu katak númeru pasiente iha Lahane no Tasi-Tolu menus daudauk ona.

% okupante atual ba kama sira iha Sentru Izolamentu Lahane hamutuk 45%.

% okupante atual ba kama sira iha Sentru Izolamentu Tasi-Tolu hamutuk 6%.

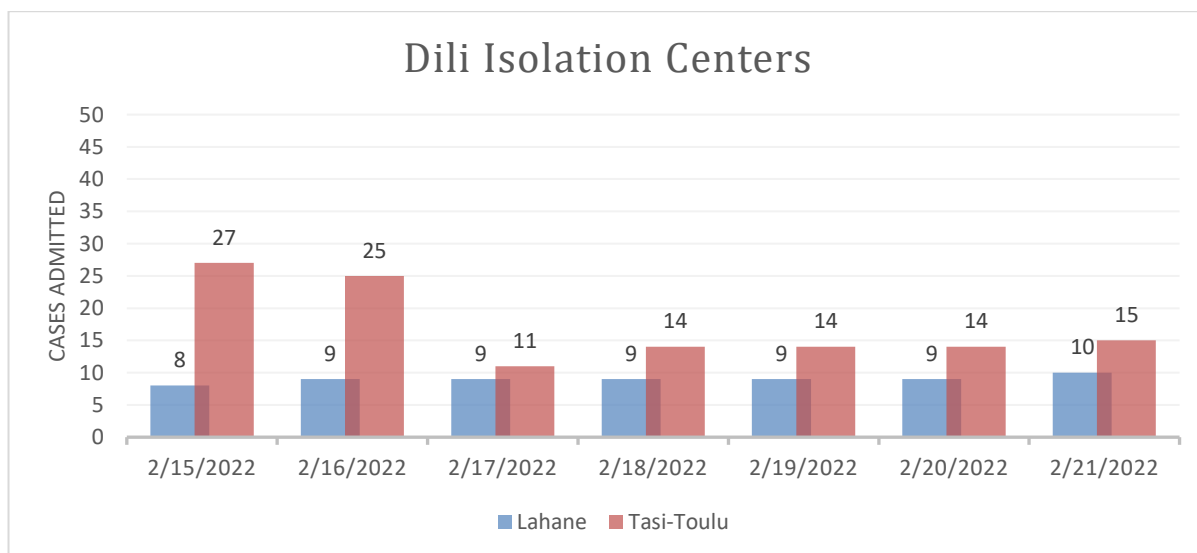
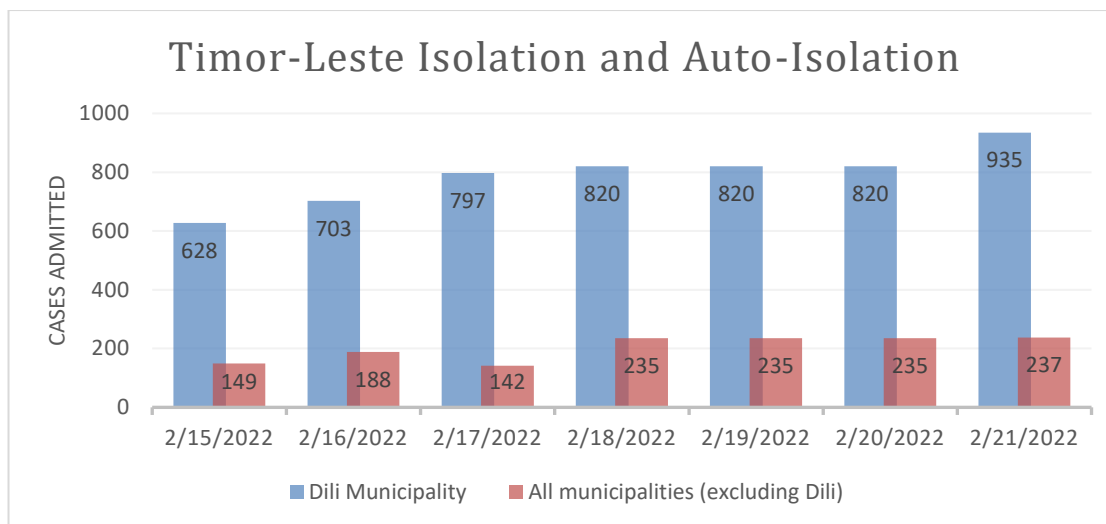


Figura tuir mai ne'e hatudu númeru pasiente ne'ebé admite iha sentru izolamentu sira no sira ne'ebé iha auto-isolamentu (iha uma) iha munisípiu 12 kompara ho Dili. Iha Timor-Leste laran tomak, númeru pasiente sira ne'ebé admite iha sentru izolamentu no iha uma sa'e gradualmente.



IMUNIZASAUN COVID-19

Iha periodu relatóriu ida ne'e (22 Fev. 2022 dadeer), total doze vasina COVID-19 ne'ebé administra 1,258,691 kompostu husi doze dahuluk 677,088 (kobertura 84.6% entre populasaun idade 18 no liu no 21.3% entre populasaun idade 12 to'o <18) no doze daruak 571,230 (kobertura 71.6% entre populasaun idade 18 no liu 16.8% entre populasaun idade 12 to'o <18), doze *booster* 10,362 (kobertura 1.4% entre populasaun idade 18 no liu) maka administra ona iha territóriu Timor-Leste tomak. Detallu husi númeru doze vasina ne'ebé administra ona no kobertura tuir produktu vasina no doze vasina nian bele refere ba Tabela no figura 6 tuir mai ne'e.

Tabela 1: Númeru doze vasina COVID-19 ne'ebé administra ona no kobertura iha Dili no Timor-Leste tuir vasina nia marka no doze sira, atualizada to'o 10:00hrs 22/02/2022

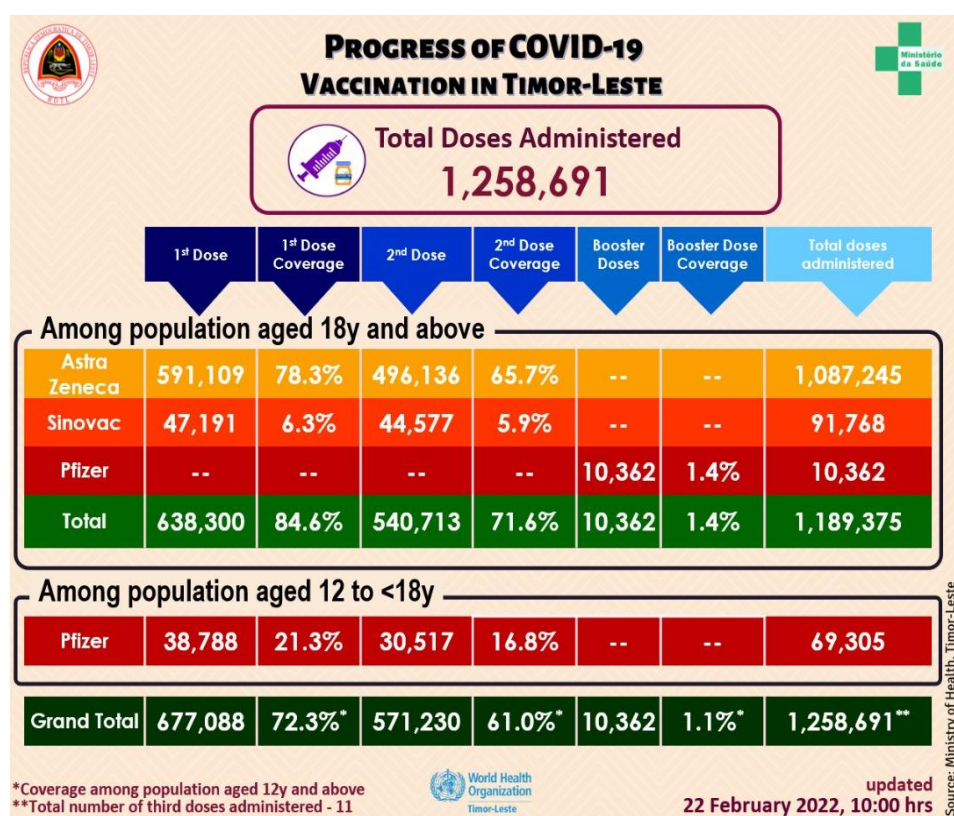


Figura 1: Kobertura vasina COVID-19 ba populasaun tinan 18 ba leten tuir munisípiu iha Timor-Leste atualizada 10:00hrs 22/02/2022

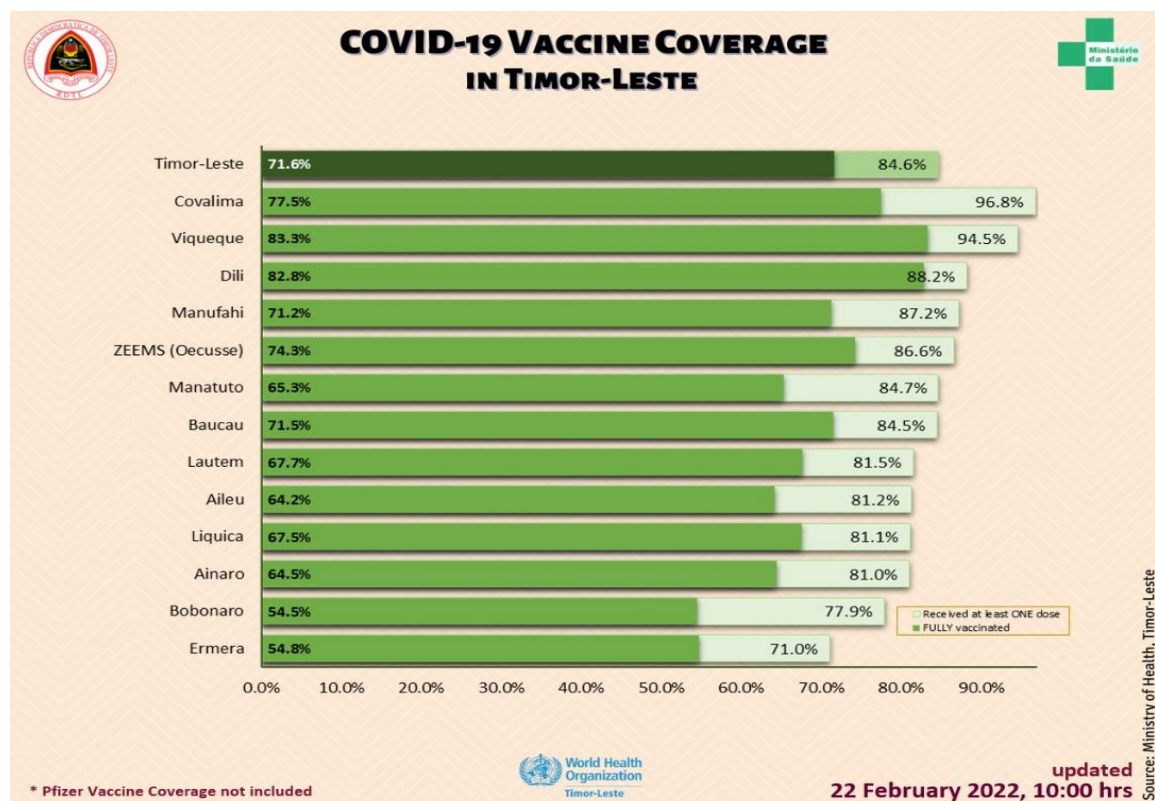


Tabela 2: Númeru ema sira ne'ebé simu vasina ho produktu vasina hotu (AstraZeneca, Sinovac, no Pfizer) no EADI tuir sexu iha kada munisípiu iha Timor-Leste, atualizada to'o 10:00 hrs 22/02/2022

Municipality	Number Vaccinated									AEFI		
	First Dose			Second Dose			Third & Booster			Male	Female	Total
	Male	Female	Total	Male	Female	Total	Male	Female	Total			
Dili	122,344	104,215	226,559	110,122	97,467	207,589	6,076	3,360	9,436	14	26	40
Aileu	12,947	12,415	25,362	10,044	10,013	20,057	-	-	-	1	1	2
Ainaro	14,435	14,035	28,470	11,239	11,406	22,645	-	-	-	0	0	0
Baucau	30,667	31,269	61,936	25,924	26,497	52,421	443	136	579	0	0	0
Bobonaro	22,158	22,033	44,191	15,576	15,353	30,929	-	-	-	4	6	10
Covalima	19,379	19,566	38,945	15,617	15,547	31,164	-	-	-	7	6	13
Ermera	27,673	25,716	53,389	21,077	20,087	41,164	-	-	-	0	0	0
Lautem	14,195	15,474	29,669	11,417	13,222	24,639	-	-	-	2	0	2
Liquica	18,572	18,927	37,499	15,018	15,490	30,508	65	32	97	0	1	1
Manatuto	12,352	11,708	24,060	9,386	9,179	18,565	-	-	-	2	0	2
Manufahi	14,920	14,179	29,099	12,069	11,699	23,768	-	-	-	1	2	3
Viqueque	20,223	21,344	41,567	17,581	19,039	36,620	165	96	261	6	0	6
ZEEMS (Oecusse)	17,625	18,717	36,342	15,145	16,016	31,161	-	-	-	0	0	0
Total (without Dili)	225,146	225,383	450,529	180,093	183,548	363,641	673	264	937	23	16	39
Total (Timor-Leste)	347,490	329,598	677,088	290,215	281,015	571,230	6,749	3,624	10,373	37	42	79

Figura 2: Progresu semanal imunizasaun COVID-19 iha Timor-Leste atualizada to'o 10:00 hrs 20/02/2022

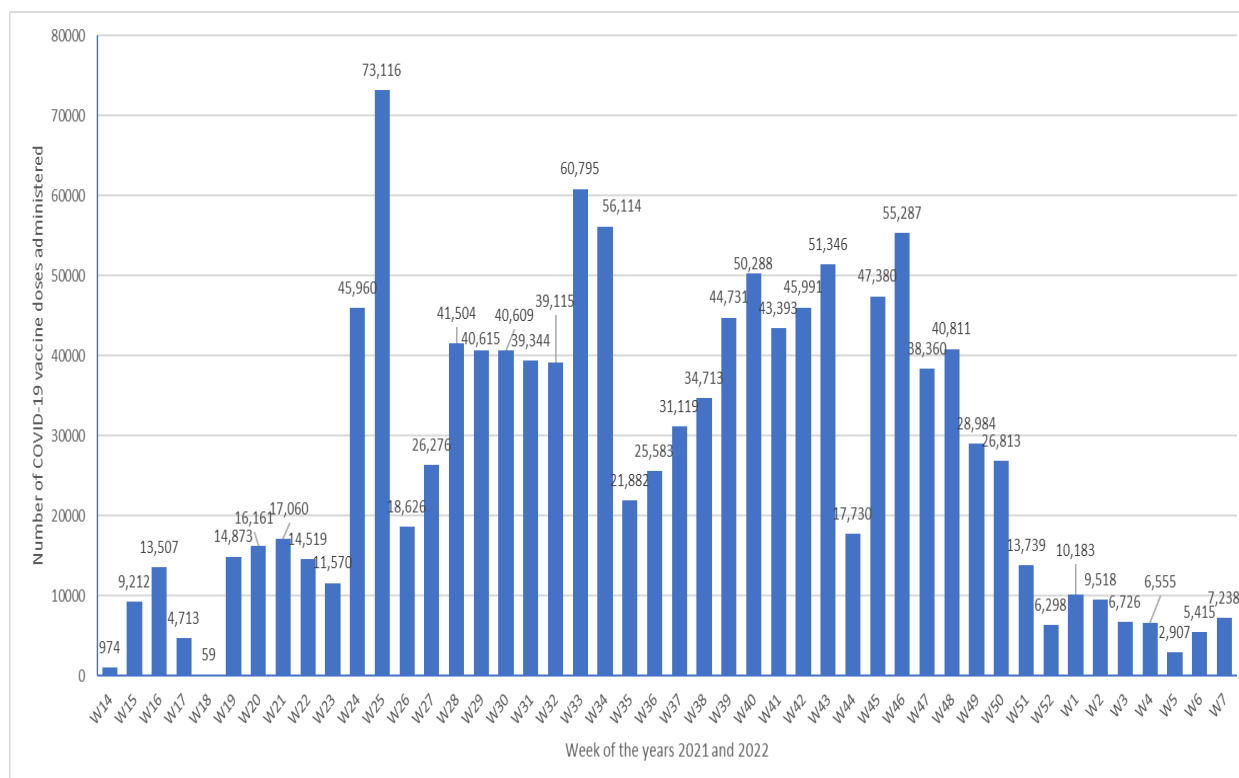


Tabela 3: Númeru populasaun idade 12 to'o <18 no liu* ne'ebé simu vasina Pfizer no kobertura tuir munisípiu iha Timor-Leste, atualizada to'o 10:00hrs 22/02/2022

Municipality	12to <18y Population	First Dose				Second Dose			
		12 to <18y Students	12 to <18y Non-students	Total	Coverage	12 to <18y Students	12 to <18y Non-students	Total	Coverage
Dili	41,822	37,851	43	37,894	90.6%	30,492	23	30,515	73.0%
Aileu	7,770	-	-	-	0.0%	-	-	-	0.0%
Ainaro	10,253	-	-	-	0.0%	-	-	-	0.0%
Baucau	18,189	-	-	-	0.0%	-	-	-	0.0%
Bobonaro	14,466	-	-	-	0.0%	-	-	-	0.0%
Covalima	9,729	-	-	-	0.0%	-	-	-	0.0%
Ermera	20,564	-	-	-	0.0%	-	-	-	0.0%
Lautem	10,447	-	-	-	0.0%	-	-	-	0.0%
Liquica	11,137	861	-	861	7.7%	1	-	1	0.0%
Manatuto	7,108	-	-	-	0.0%	-	-	-	0.0%
Manufahi	8,267	-	-	-	0.0%	-	-	-	0.0%
Viqueque	11,490	-	2	2	0.0%	1	-	1	0.0%
ZEEMS (Oecusse)	10,565	-	-	-	0.0%	-	-	-	0.0%
Total (without Dili)	139,985	861	2	863	0.6%	2	-	2	0.0%
Total (Timor-Leste)	181,807	38,712	45	38,757	21.3%	30,494	23	30,517	16.8%

*Based on 2021 population projections

Total Vaccinated (both doses) 69,274

Tabela 4: Númeru ema individuu entre populasaun elijivel sira (tinan 18 no liu*) ne'ebé vasinadu ona ho vasina COVID-19 AstraZeneca no Sinovac iha Timor-Leste no kobertura atualizada to'o 10:00hrs 22/02/2022

Municipality	Eligible Population			Number vaccinated & Coverage																	
	High Risk Groups (20% Pop.)	18-59y no comorbidity (80% Pop.)	Total	First Dose					Second Dose					Booster Dose							
				High Risk Groups (20% Pop.)	Coverage	18-59y no comorbidity (80% Pop.)	Coverage	Total	Coverage	High Risk Groups (20% Pop.)	Coverage	18-59y no comorbidity (80% Pop.)	Coverage	Total	Coverage	High Risk Groups (20% Pop.)	Coverage	18-59y no comorbidity (80% Pop.)	Coverage	Total	Coverage
Dili	29,980	183,822	213,802	53,601	170.8%	135,063	73.5%	188,664	88.2%	34,498	115.1%	142,576	77.6%	177,074	82.8%	3777	1.8%	5648	2.6%	9425	4.4%
Alieu	6,292	24,943	31,235	13,021	206.9%	12,341	49.5%	25,362	81.2%	10,940	173.9%	9,117	36.6%	20057	64.2%	0	0.0%	0	0.0%	0	0.0%
Ainaro	7,410	27,726	35,136	6,731	90.8%	21,739	78.4%	28,470	81.0%	5,132	69.3%	17,513	63.2%	22645	64.5%	0	0.0%	0	0.0%	0	0.0%
Baucau	18,141	55,175	73,316	17,536	96.7%	44,400	80.5%	61,936	84.5%	13,395	73.8%	39,026	70.7%	52421	71.5%	545	0.7%	34	0.0%	579	0.8%
Bobonaro	13,268	43,476	56,744	11,087	83.6%	33,104	76.1%	44,191	77.9%	7,418	55.9%	23,511	54.1%	30929	54.5%	0	0.0%	0	0.0%	0	0.0%
Covalima	8,725	31,503	40,228	10,211	117.0%	28,734	91.2%	38,945	96.8%	7,328	84.0%	23,836	75.7%	31164	77.5%	0	0.0%	0	0.0%	0	0.0%
Ermera	14,350	60,793	75,143	11,122	77.5%	42,267	69.5%	53,389	71.0%	6,904	48.1%	34,260	56.4%	41164	54.8%	0	0.0%	0	0.0%	0	0.0%
Lautem	8,455	27,963	36,418	8,499	100.5%	21,170	75.7%	29,669	81.5%	6,959	82.3%	17,680	63.2%	24639	67.7%	0	0.0%	0	0.0%	0	0.0%
Liquica	9,588	35,597	45,185	9,212	96.1%	27,426	77.0%	36,638	81.1%	7,115	74.2%	23,392	65.7%	30507	67.5%	97	0.2%	0	0.0%	97	0.2%
Manatuto	6,701	23,718	28,419	6,885	102.7%	17,175	79.1%	24,060	84.7%	4,840	72.2%	13,725	63.2%	18565	65.3%	0	0.0%	0	0.0%	0	0.0%
Manufahi	7,595	25,766	33,361	9,724	128.0%	19,375	75.2%	29,099	87.2%	9,509	125.2%	14,259	55.3%	23768	71.2%	0	0.0%	0	0.0%	0	0.0%
Viqueque	11,034	32,905	43,939	12,546	113.7%	28,980	88.1%	41,535	94.5%	10,577	95.9%	26,042	79.1%	36619	83.3%	256	0.6%	5	0.0%	261	0.6%
ZEEMS (Decusse)	9,408	32,534	41,942	11,639	123.7%	24,703	75.9%	36,342	86.6%	8,170	86.9%	22,985	70.6%	31,161	74.3%	0	0.0%	0	0.0%	0	0.0%
Total (without Dili)	120,967	420,098	541,065	128,213	106.0%	321,423	76.5%	440,636	83.1%	98,293	81.3%	265,346	63.2%	363,639	67.2%	898	0.2%	39	0.0%	937	0.2%
Total (Timor Leste)	150,947	603,920	754,867	181,814	120.4%	456,486	75.59%	638,300	84.6%	132,791	88.0%	407,922	67.5%	540,713	71.6%	4675	0.6%	5687	0.8%	10362	1.4%

*Based on 2021 population projections. Population with Comorbidity 12.5% among 18-59y based on 2016 DHS data
 High Risk Groups (20% of the population) - Healthcare staff, other front line staff, aged 65y and above, and 18-59y with comorbidity
 18-59y with no comorbidity (80% of the population)

Total Vaccinated (all doses) 1,189,375 (Total No. of third Doses - 11)

ANALIZE SITUASAUN

- Iha sinál balun ne'ebé hatudu katak onda transmisaun ida ne'e komesa menus ka desendente, maske presiza tempu balun tan hodi observa no hodi konfirma. Ida ne'e hatudu husi númeru insidente ne'ebé menus no kazu insidente liu liu iha área kapital, no taxa teste positividade ne'ebé menus no númeru paciente ne'ebé jeralmente estavel iha sentru tratamentu sira.
- Nafatin iha razaun ba fiar katak tendénsia iha leten ne'e sei real no loos, haree husi tendénsia husi nasaun sira seluk, ho kobertura vasinasaun ne'ebé relativamente aas (iha Dili no munisípiu balun seluk), no ho estrutura populasaun Timor-Leste nian ne'ebé relativamente joven.
- Maske nune'e, ita presiza nafatin kontinua ita-nia esforsu ba haforsa vijilánsia no teste hodi nune'e bele identifika no izola barak liu tan ema sira ne'ebé infetadu ho virus ida ne'e, kotantu besik sira qurentena no hodi komprende tendénsia epidemiolójika. Nafatin kontinua esforsu hodi hadi'ak ita-nia preparasaun ba kuidadu no tratamentu ba kazu krítiku no todan sira.

REKURSU NE'EBÉ DISPONIVEL

- [Ba públiku jerál no profesionál saúde sira kona-ba prevensaun, tratamentu, no vasina, nsst.](#)
- [Rekomendasaun OMS ba Desizaun Relasiona ho COVID-19](#)
- Kursu gratuita iha Tetum – [OpenWHO.org](#)

KONTAKTU MÉDIA NO INFORMASAUN KONA-BA COVID-19

- Ministériu Saúde estabelese ona númeru *hotline* – 119 – ba COVID-19 ne'ebé maka ema hotu-hotu bele kontaktu hodi hetan informasaun relasiona ho COVID-19
- Alende ne'e, [Pájina Facebook MS](#) nian fornese atualizasaun loloos kona-ba desenvolvimentu COVID-19 iha rai laran
- OMS Timor-Leste liuhusi nia [Pájina Facebook](#) no [Twitter](#) mós disemina informasaun kona-ba medida preventiva, pergunta no resposta, *myth-buster* no atualizasaun ikus kona-ba COVID-19 iha mundu tomak no iha rai laran. Ba media no pedidu ba entrevista bele manda ba hasane@who.int ka wcotimorleste@who.int