



Coronavirus Disease 2019 (COVID-19)

Situation Report – 141

Timor-Leste

*Data as reported on 1 March 2022

SITUATION IN NUMBERS

TIMOR-LESTE



Cumulative
22,716 (231)



Recovered (new)
22,185 (762)



Active cases
403



Deaths (new)
128 (3)

VACCINATION STATUS



1st dose - **679,721**
Coverage - **84.7%****



2nd dose - **573,230**
Coverage - **71.9%****

*As per data released by the [Ministry of Health](#)

**For adult population 18 years and above

GLOBAL



Cases
434,154,739



Deaths
5,944,342

VACCINATION



10,585,766,316 doses

HIGHLIGHTS

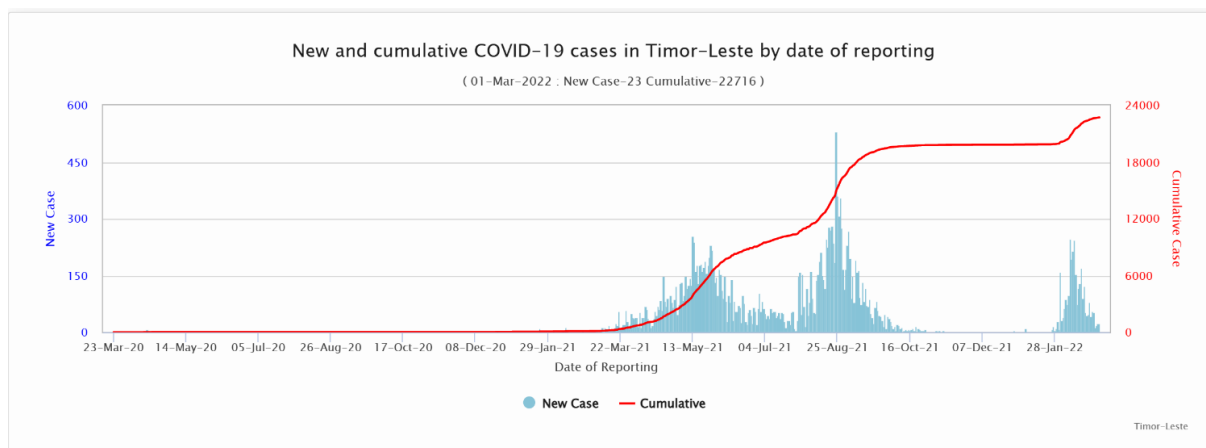
- Since the last edition of the weekly situation report, the Ministry of Health (MoH) reported **231** new cases of COVID-19, **762** recoveries and **3** death. The number of incident cases is reduced by 62% as compared with the last reporting period.
- The World Health Organization (WHO) handed over 50,000 rapid antigen test kits (ag-RDT) to the Ministry of Health (MoH) of Timor-Leste with generous support from the Korea International Cooperation Agency (KOICA).
- The Port Health Unit of MOH, with the support from WHO, has developed an arrival passenger information system, trying to improve the health quarantine, and following up of international travellers. Training on data entry and tracking has been provided to staff in the Dili International Airport.
- WHO continues deployment of international public health consultants in municipality to support the COVID19 vaccination drive of the government of Timor-Leste through multiple approaches including door to door campaigns.

- WHO Country office for Timor-Leste is supporting Ministry of health to develop an institutional based reproductive health information system to provide data on trends, patterns of maternal and child health service provision, health seeking behaviours and related mortality and morbidity. The information should be used in planning and evidence-based decision making for health care service delivery for women, mothers, and children.
- To support the ongoing vaccination campaign against COVID-19, UNICEF is supporting SAMES in the distribution of AstraZeneca and Pfizer vaccines to all municipalities and strengthening regional warehouse capacity to store vaccines.
- Water supply assessments have been completed in CHCs with the most needs in Covalima that were selected for the next phase of WASH improvements by UNICEF. Moreover, BEE TL and UNICEF have jointly identified 15 public places in Dili where permanent hand washing stations would be constructed.

EPIDEMIOLOGICAL UPDATES

1. New and cumulative cases, as of 1 March 2022

As shown by the epi curve below, number of new cases reported continues to decrease for the third consecutive week.



2. Distribution of cases and deaths by municipalities

Distribution of newly reported, recovered, and active cases by municipalities, as of 1 March 2022)

Municipality	New case (23 Feb. – 1 Mar. 2022)	Last 7-day % change (case)*	Cumulative case	New recovered (23 Feb.-1 Mar. 2022)	Cumulative recovered	New death (23 Feb.-1 Mar. 2022)	Cumulative death	Active Cases (1 Mar. 2022)
Aileu	0	-100	136	10	135	0	1	0
Ainaro	6	100	302	69	293	0	3	6
Baucau	5	-85	1620	10	1571	0	7	42
Bobonaro	1	-98	735	46	709	1	10	16

Covalima	14	8	825	15	808	0	3	14
Dili	201	-53	16205	588	15808	2	86	311
Ermera	0	100	1120	0	1113	0	2	5
Lautem	0	100	187	0	181	0	5	1
Liquica	0	-100	132	5	131	0	1	0
Manatuto	0	-100	240	14	235	0	2	3
Manufahi	1	-50	272	3	271	0	0	1
RAEOA	3	0	423	2	416	0	3	4
Viqueque	0	0	519	0	514	0	5	0
TOTAL	231	-62	22716	762	22185	3	128	403

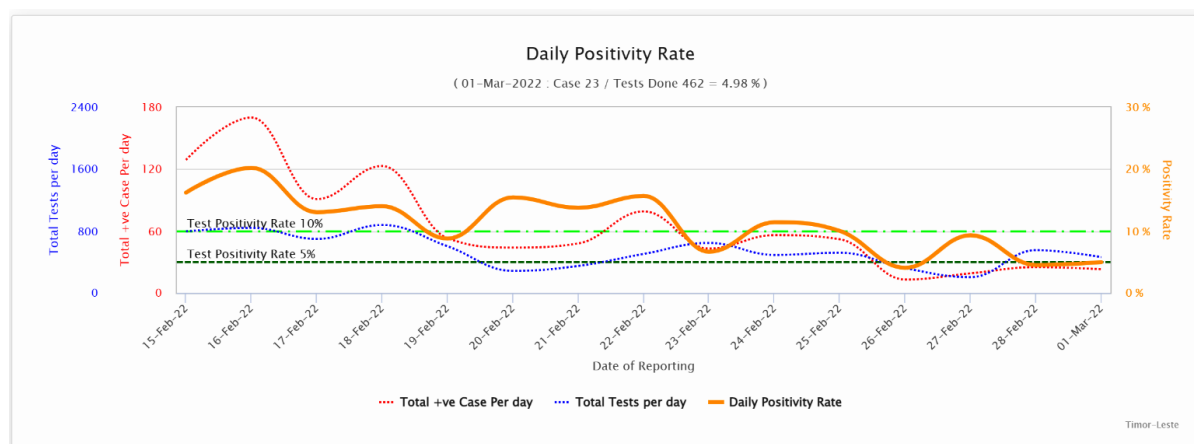
***Change in new COVID-19 cases as compared with the previous 7 days**

- A total of 231 new cases are reported during the current reporting period (23 Feb. – 1 Mar. 2022), as compared 608 cases reported during the previous reporting period (16-22 Feb. 2022), with a 62% reduction. Majority cases (87%) are reported from Dili, while Covalima, Baucau, Ainaro, Bobonaro, Oecusse and Manufahi have reported incident cases.
- Three COVID-19 related death have been reported from Timor-Leste during this reporting period, increased from 2 of the last reporting period.
- The number of active cases has been 403 as of 1 Mar. 2022.

3. Number of test and test positivity rates

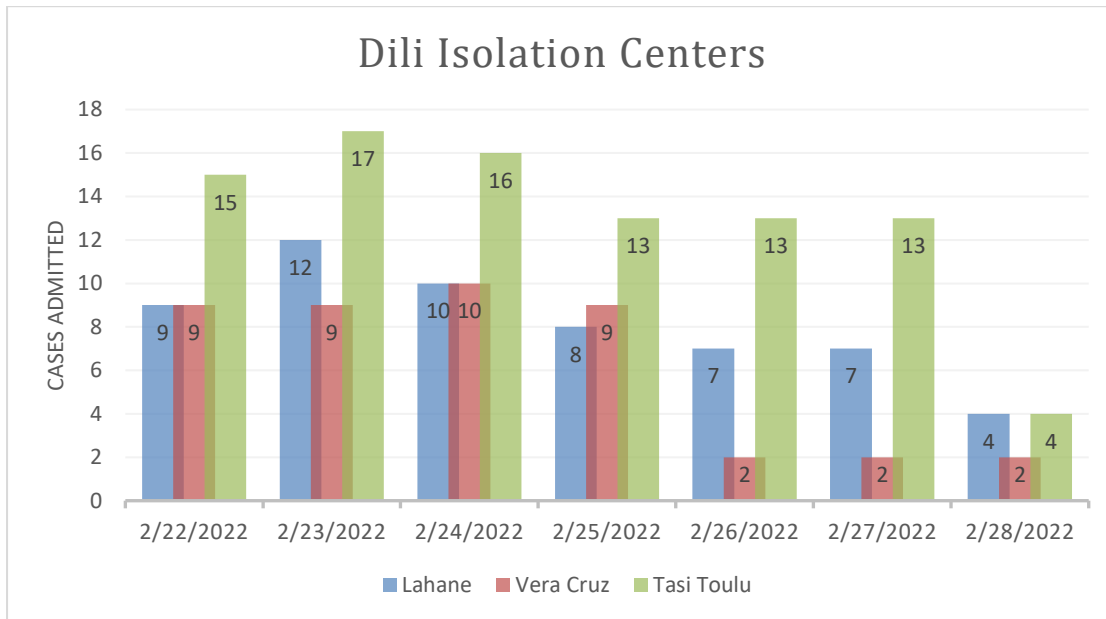
During the current reporting period from 23 Feb. – 1 Mar. 2022, 5,006 tests were conducted, as compared to 4,158 tests in the previous 7 days.

The test positive rate of this reporting period is averaged as 4.6%, as compared with 14.6% of the previous reporting period. The figure below illustrates the daily number of tests, cases and test positivity proportion, which demonstrates a clear downward trend.



CASE MANAGEMENT

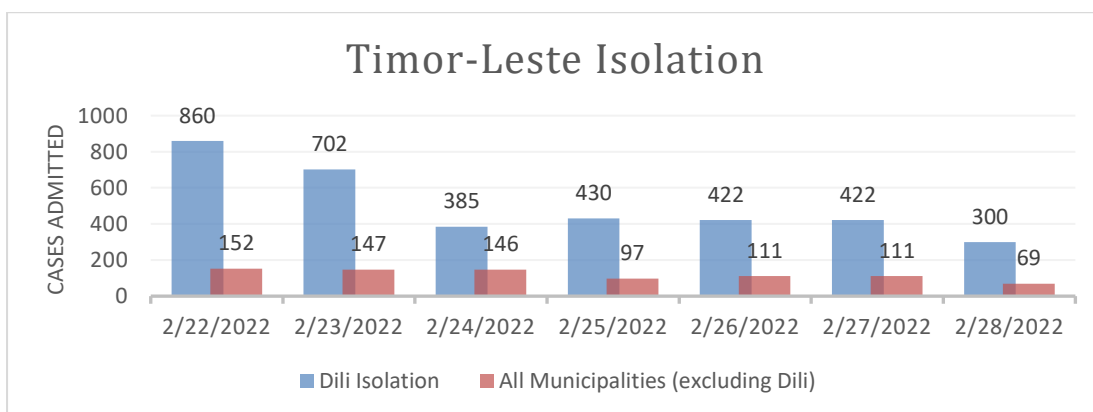
Vera Cruz Isolation Center has reverted back to receive COVID-19 patients recently. Lahane Isolation Center is treating moderate/severe patients with risk factors and critical cases, while part of the Tasi-Tolu Center admits mild and moderate cases with risk factors. From the figure below, it shows that the number of patients at the Lahane and Tasi-Tolu has been reduced.



The current bed occupancy % for Lahane Isolation center is 18%.

The current bed occupancy % for Tasi-Tolu Isolation center is 2%.

The current bed occupancy % for Vera Cruz Isolation Center is 2%.



This chart shows the total number of people admitted to isolation centres and auto-isolation (at home) in 12 municipalities compared to Dili. Throughout Timor-Leste, patients admitted to isolation centres have steadily decreased.

VACCINATION

At the time of writing this report (01/03/2022 morning), in total, 1,264,542 COVID-19 vaccine doses comprising 679,721 first doses (coverage 84.7% among population aged 18 years and above and 22.2% among the population aged 12 years to <18 years), 573,230 second doses (coverage 71.9% among population aged 18 years and above and 16.9% among the population aged 12 years to <18 years), 11,580 (coverage 1.5% among population aged 18 years) booster doses were administered in Timor-Leste. The breakdown of the number of doses administered and coverage by vaccine product and vaccine dose is illustrated in Table 1.

Table 1: Number of COVID-19 vaccine doses administered and coverage in Timor-Leste by vaccine product and dose as of 10:00hrs 01/03/2022

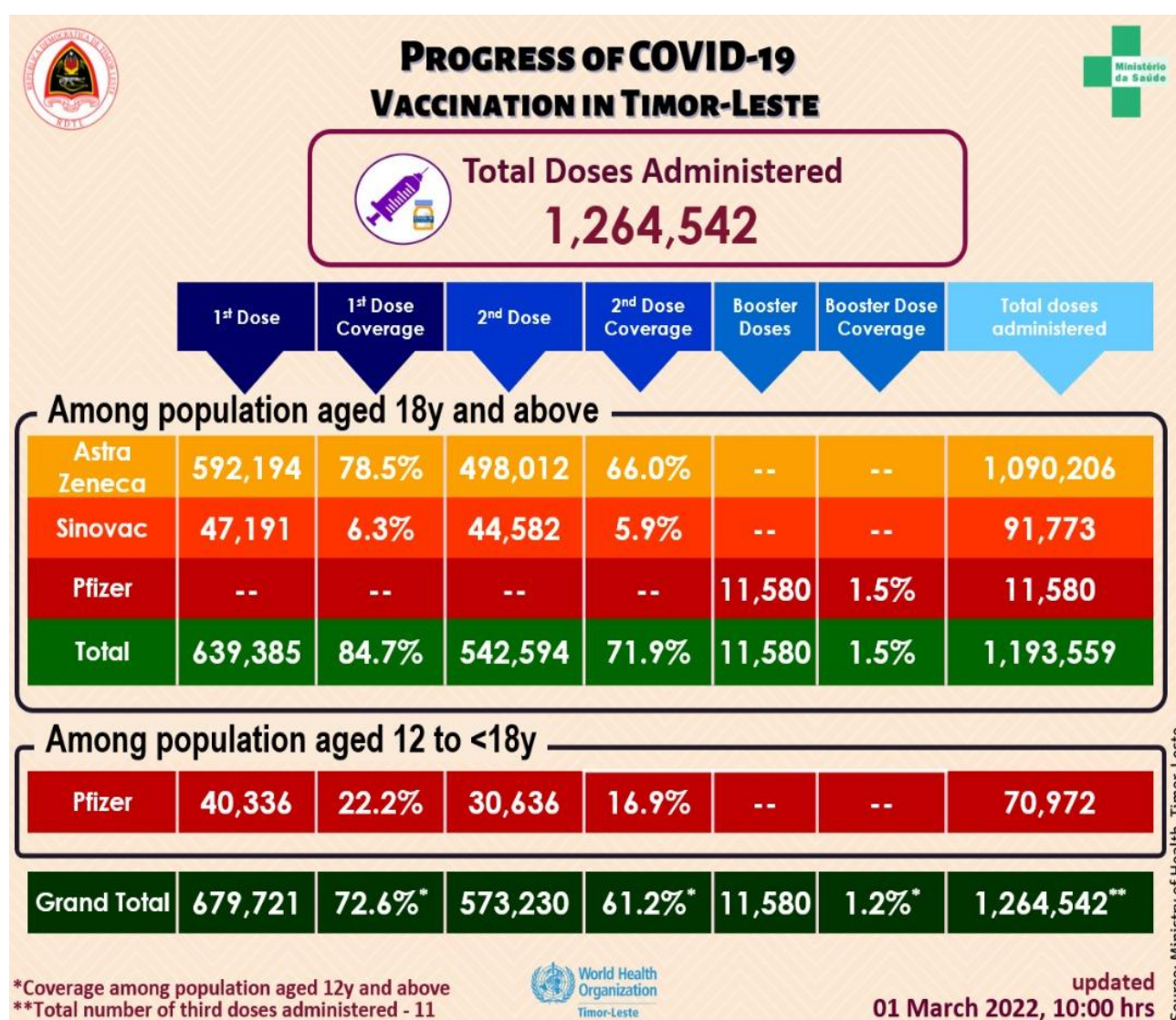


Figure 1: Coverage of COVID-19 vaccination among population aged 18 years and above by municipality in Timor-Leste as of 10:00hrs 01/03/2022

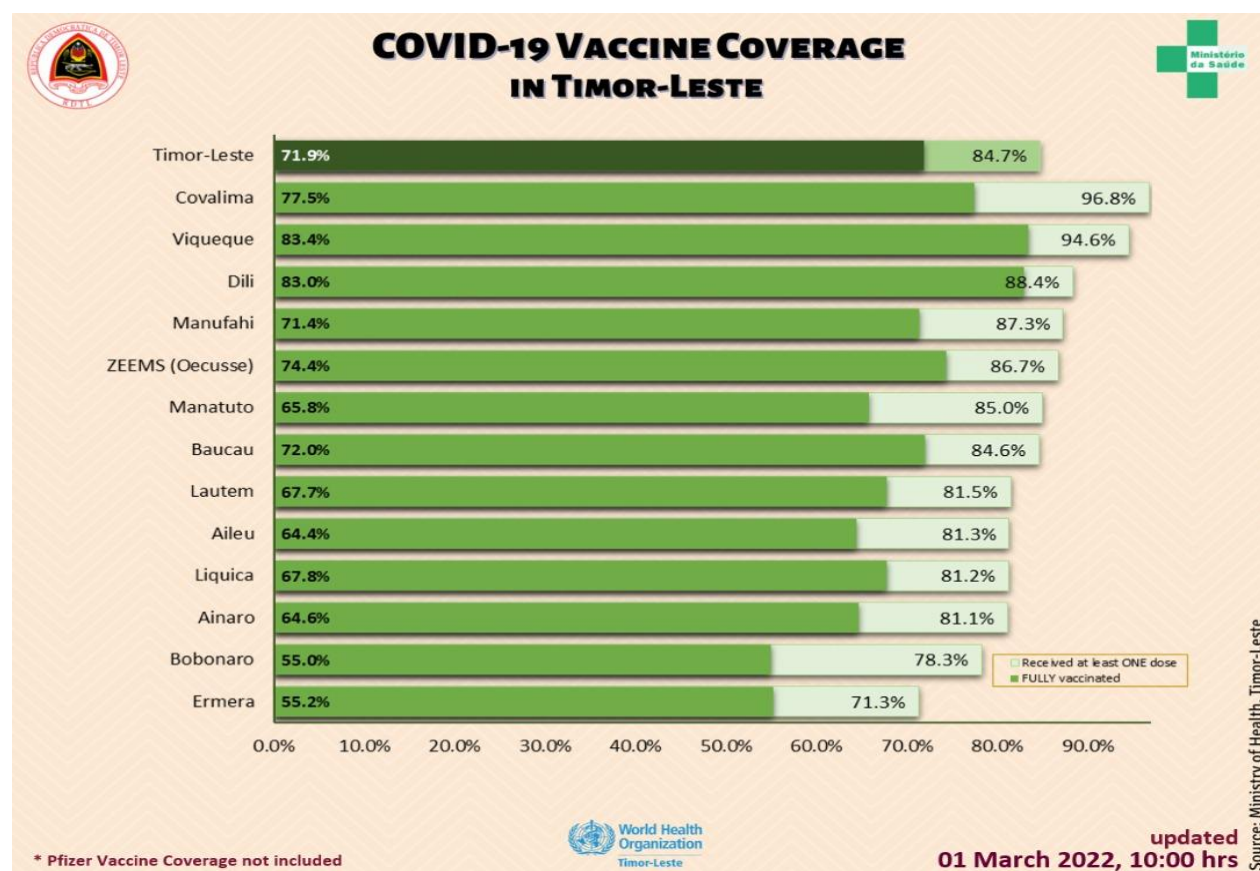


Table 2: Total number of individuals vaccinated with all the vaccine products (AstraZeneca, Sinovac, and Pfizer) and AEFI by sex by district in Timor-Leste as of 10:00 hrs 01/03/2022

Municipality	Number Vaccinated									AEFI		
	First Dose			Second Dose			Third & Booster			Male	Female	Total
	Male	Female	Total	Male	Female	Total	Male	Female	Total			
Dili	122,558	104,415	226,973	110,326	97,733	208,059	6,691	3,665	10,356	14	26	40
Aileu	12,964	12,432	25,396	10,069	10,055	20,124	-	-	-	1	1	2
Ainaro	14,450	14,054	28,504	11,265	11,445	22,710	-	-	-	0	0	0
Baucau	30,694	31,344	62,038	26,073	26,686	52,759	520	175	695	0	0	0
Bobonaro	22,254	22,157	44,411	15,721	15,501	31,222	49	28	77	4	6	10
Covalima	19,379	19,566	38,945	15,618	15,553	31,171	-	-	-	7	6	13
Ermera	28,301	26,361	54,662	21,236	20,262	41,498	10	2	12	0	0	0
Lautem	14,202	15,491	29,693	11,431	13,234	24,665	-	-	-	2	0	2
Liquica	18,759	19,152	37,911	15,072	15,573	30,645	68	33	101	0	1	1
Manatuto	12,396	11,763	24,159	9,444	9,259	18,703	-	-	-	2	0	2
Manufahi	14,934	14,184	29,118	12,090	11,716	23,806	-	-	-	1	2	3
Viqueque	20,217	21,336	41,553	17,600	19,055	36,655	213	137	350	6	0	6
ZEEMS (Oecusse)	17,629	18,729	36,358	15,159	16,054	31,213	-	-	-	0	0	0
Total (without Dili)	226,179	226,569	452,748	180,778	184,393	365,171	860	375	1,235	23	16	39
Total (Timor-Leste)	348,737	330,984	679,721	291,104	282,126	573,230	7,551	4,040	11,591	37	42	79

Figure 2: Weekly progress of COVID-19 vaccination in Timor-Leste as of 10:00 hrs 27/02/2022

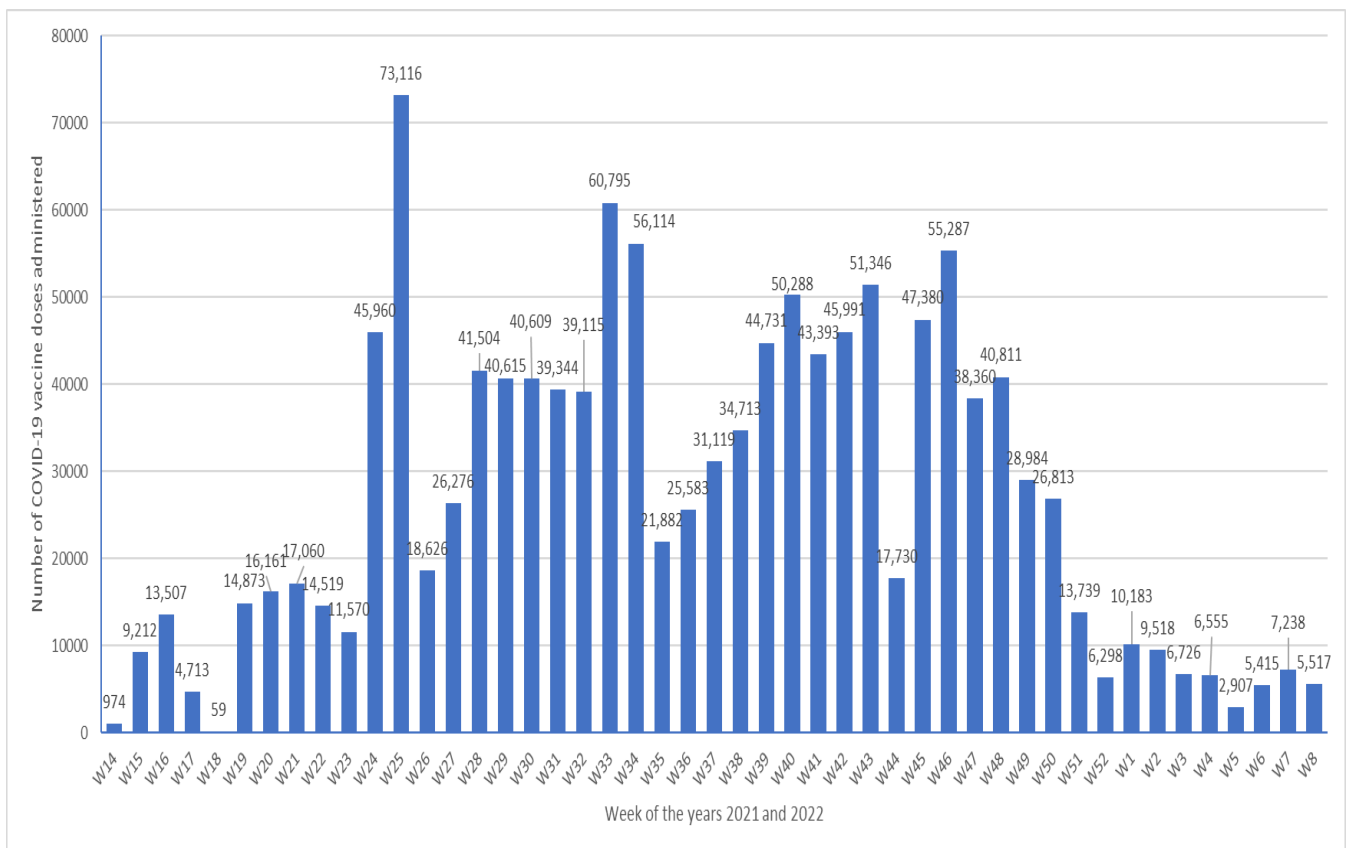


Table 3. Number of individuals among population aged 12 years to <18 years and above* vaccinated with Pfizer vaccine and coverage by district in Timor-Leste as of 10:00hrs 01/03/2022

Municipality	12to <18y Population	First Dose				Second Dose			
		12 to <18y Students	12 to <18y Non-students	Total	Coverage	12 to <18y Students	12 to <18y Non-students	Total	Coverage
Dili	41,822	37,987	44	38,031	90.9%	30,610	24	30,634	73.2%
Aileu	7,770	-	-	-	0.0%	-	-	-	0.0%
Ainaro	10,253	-	-	-	0.0%	-	-	-	0.0%
Baucau	18,189	6	-	6	0.0%	-	-	-	0.0%
Bobonaro	14,466	-	-	-	0.0%	-	-	-	0.0%
Covalima	9,729	-	-	-	0.0%	-	-	-	0.0%
Ermera	20,564	1,082	-	1,082	5.3%	-	-	-	0.0%
Lautem	10,447	-	-	-	0.0%	-	-	-	0.0%
Liquica	11,137	1,214	-	1,214	10.9%	1	-	1	0.0%
Manatuto	7,108	-	-	-	0.0%	-	-	-	0.0%
Manufahi	8,267	-	-	-	0.0%	-	-	-	0.0%
Viqueque	11,490	-	2	2	0.0%	1	-	1	0.0%
ZEEMS (Oecusse)	10,565	-	-	-	0.0%	-	-	-	0.0%
Total (without Dili)	139,985	2,302	2	2,304	1.6%	2	-	2	0.0%
Total (Timor-Leste)	181,807	40,289	46	40,335	22.2%	30,612	24	30,636	16.9%

*Based on 2021 population projections

Total Vaccinated (both doses) 70,971

Table 4. Number of individuals among population aged 18 years and above* vaccinated with AstraZeneca and Sinovac vaccines and coverage by district in Timor-Leste as of 10:00hrs 01/03/2022

Municipality	Eligible Population			Number vaccinated & Coverage																	
	High Risk Groups (20% Pop.)	18-59y no comorbidity (80% Pop.)	Total	First Dose						Second Dose						Booster Dose					
				High Risk Groups (20% Pop.)	Coverage	18-59y no comorbidity (80% Pop.)	Coverage	Total	Coverage	High Risk Groups (20% Pop.)	Coverage	18-59y no comorbidity (80% Pop.)	Coverage	Total	Coverage	High Risk Groups (20% Pop.)	Coverage	18-59y no comorbidity (80% Pop.)	Coverage	Total	Coverage
Dili	29,980	183,822	213,802	53,628	178.9%	135,313	79.6%	188,941	88.4%	34,506	115.1%	142,919	77.7%	177,425	83.0%	3994	1.9%	6351	3.0%	10345	4.8%
Aileu	6,292	24,943	31,235	13,039	207.2%	12,357	49.5%	25,396	81.3%	10,984	174.6%	9,140	36.6%	20124	64.4%	0	0.0%	0	0.0%	0	0.0%
Ainaro	7,410	27,726	35,136	6,736	90.9%	21,768	78.5%	28,504	81.1%	5,137	69.3%	17,573	63.4%	22710	64.6%	0	0.0%	0	0.0%	0	0.0%
Baucau	18,141	55,175	73,316	17,550	96.7%	44,482	80.6%	62,032	84.6%	13,468	74.2%	39,291	71.2%	52759	72.0%	646	0.9%	49	0.1%	695	0.9%
Bobonaro	13,268	43,476	56,744	11,100	83.7%	33,311	76.6%	44,411	78.3%	7,443	56.1%	23,779	54.7%	31222	55.0%	77	0.1%	0	0.0%	77	0.1%
Covalima	8,725	31,503	40,228	10,211	117.0%	28,734	91.2%	38,945	96.8%	7,328	84.0%	23,843	75.7%	31171	77.5%	0	0.0%	0	0.0%	0	0.0%
Ermera	14,350	60,793	75,143	11,137	77.6%	42,443	69.8%	53,580	71.3%	6,941	48.4%	34,557	56.8%	41488	55.2%	12	0.0%	0	0.0%	12	0.0%
Lautem	8,455	27,963	36,418	8,499	100.5%	21,194	75.8%	29,693	81.5%	6,959	82.3%	17,706	63.3%	24665	67.7%	0	0.0%	0	0.0%	0	0.0%
Liquica	9,588	35,597	45,185	9,214	96.1%	27,483	77.2%	36,697	81.2%	7,123	74.3%	23,521	66.1%	30644	67.8%	101	0.2%	0	0.0%	101	0.2%
Manatuto	6,701	21,718	28,419	6,901	103.0%	17,258	79.5%	24,159	85.0%	4,859	72.5%	13,844	63.7%	18703	65.8%	0	0.0%	0	0.0%	0	0.0%
Manufahi	7,595	25,766	33,361	9,775	128.0%	19,393	75.3%	29,118	87.3%	9,519	125.3%	14,287	55.4%	23806	71.4%	0	0.0%	0	0.0%	0	0.0%
Viqueque	11,034	32,905	43,939	12,550	113.7%	29,001	88.1%	41,551	94.6%	10,581	95.9%	26,073	79.2%	36654	83.4%	341	0.8%	9	0.0%	350	0.8%
ZEEMS (Decusse)	9,408	32,534	41,942	11,642	123.7%	24,716	76.0%	36,358	86.7%	8,189	87.0%	23,024	70.8%	31,213	74.4%	0	0.0%	0	0.0%	0	0.0%
Total (without Dili)	120,967	420,098	541,065	128,304	106.1%	322,140	76.7%	450,444	83.3%	98,531	81.5%	266,638	63.5%	365,169	67.5%	1177	0.7%	58	0.0%	1235	0.7%
Total (Timor Leste)	150,947	603,920	754,867	181,932	120.5%	457,453	75.75%	639,385	84.7%	133,037	88.1%	409,557	67.8%	542,594	71.9%	5171	0.7%	6409	0.8%	11580	1.5%

*Based on 2021 population projections. Population with Comorbidity 12.5% among 18-59y based on 2016 DHS data
 High Risk Groups (20% of the population) - Healthcare staff, other front line staff, aged 65y and above, and 18-59y with comorbidity
 18-59y with no comorbidity (80% of the population)

Total Vaccinated (all doses) 1,193,559 (Total No. of third Doses - 11)

SITUATION ANALYSIS

- The numbers of incident cases and hospitalized patients continue to decrease. The averaged test positivity rate in the past seven days has been dropped to below 5% for the first time since the start of the current wave of transmission. The number of active cases has been dropped to a new low. All evidence demonstrates that the current wave of Omicron driven transmission might be ending in the country.
- While COVID-19 cases will continue to report in the country for some time, it might be worthwhile to start discussion on the strategy and timetable of recovery. As we can see from many countries of the world, the COVID-19 related restrictions have been gradually or radically lifted up, and social and economic life starts returning to normal. For Timor-Leste, there are a number of restrictions and procedures related to international travel, which have a significant impact to the livelihood, tourism and hospitality services. Government could consider adjusting and gradually remove these restrictions in a manageable and phased manner.
- Meanwhile, surveillance and testing should continue to be strengthened, together with continuation of the vaccination, particularly to the remote areas and the under served population.

AVAILABLE RESOURCES

- [For public and professionals on prevention, treatment, and vaccination etc.](#)
- [WHO Recommendations for COVID-19 Related Decisions](#)
- WHO Free Courses in Tetum – [OpenWHO.org](#)

COVID-19 INFORMATION AND MEDIA QUERIES

- The MoH has established a hotline number – 119 – for COVID-19 on which people can call to get any COVID-19 related information.
- Additionally, [MoH Facebook page](#) provides timely updates on COVID-19 developments in the country.
- WHO Timor-Leste through its [Facebook page](#) and [Twitter handle](#) also disseminates information on preventive measures, questions and answers, myth-busters and latest updates on COVID-19 globally and nationally.
- For media queries and interviews requests can be sent to hasane@who.int