

Moras virus Corona 2019 (COVID-19)

Relatóriu Situasaun – 141

Timor-Leste



World Health
Organization

Timor-Leste

*Dadus relata to'o loron 1 Marsu 2022

SITUASAUN IHA NÚMERU

TIMOR-LESTE



Kumulativu
22,716 (231)



Rekuperadu (foun)
22,185 (762)



Kazu ativu
403



Óbitu (foun)
128 (3)

GLÓBÁL



Kazu
434,154,739



Óbitu
5,944,342

PROGRESU IMUNIZASAUN COVID-19



Doze 1^a – **679,721**
Kobertura – **84.7%****



Doze 2^a – **573,230**
Kobertura – **71.9%****

* Bazeia ba dadus ne'ebé pública husi [Ministerio da Saúde](#)

** Ba populasaun adultu tinan 18 ba leten

PROGRESU IMUNIZASAUN COVID-19



Doze vasina
10,585,766,316

SUMÁRIU

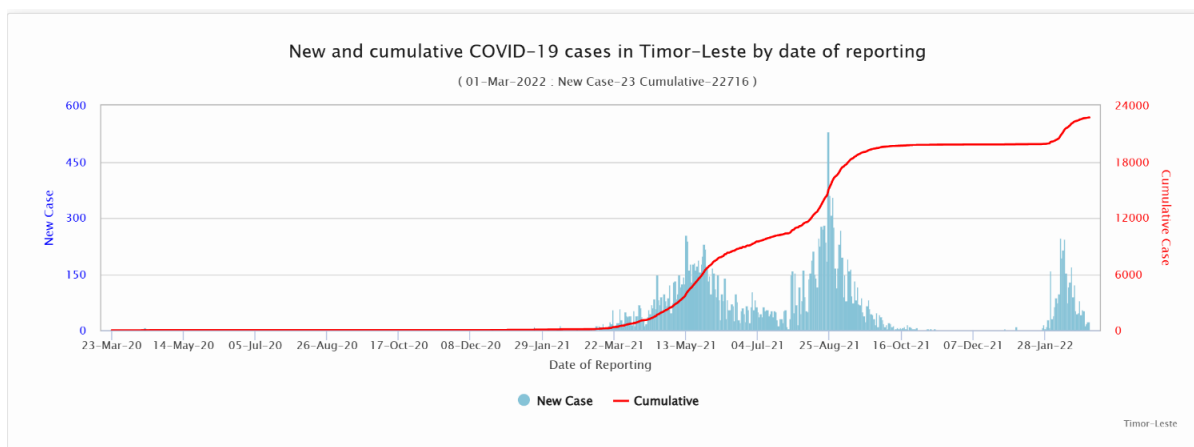
- Dezde edisaun ikus relatóriu situasaun, Ministeriu Saúde relata hamutuk **231** kazu foun COVID-19, kazu rekuperadu **762** no kazu óbitu **3**. Número kazu insidente tun 62% kompara ho períodu relatóriu ikus.
- Organizasaun Mundial Saúde (OMS) entrega *rapid antigen test kits* (ag-RDT) hamutuk 50,000 ba Minstériu Saúde (MS) Timor-Leste ho apoiu jenerozu husi Ajénsia Kooperasaun Internasional Korea (KOICA).
- Unidade Pontu Entrada husi MS, ho apoiu husi OMS, desenvolve ona sistema informasaun ba pasajeiru sira ne'ebé tama mai Timor-Leste, ho objetivu atu hadi'ak saúde kuarentena, no hodi *follow up* ho pasajeiru internacional sira. Formasaun kona ba hatama dadus no restreamentu fornese ona ba pesoál sira iha Aeroportu Internasional Dili.
- OMS kontinua koloka asesor internacional saúde pública iha munisípiu hodi suporta governu Timor-Leste iha vasinasaun ba COVID-19 ho maneira oioin inklui kampaña husi uma ba uma.

- OMS Timor-Leste apoiu hela Ministériu Saúde hodi dezenvolve Sistema informasaun saúde reprodutiva ida bazeia ba institucional hodi fornese dados kona-ba tendénsia, padraun ba prestasaun servisu saúde inan no oan, lala'ok ba buka atendimento saúde, no relasiona ho mortalidade no morbidade. Informasaun hirak ne'e sei uza hodi planu no foti desizaun bazeia ba evidencia ba atendimento saúde ba feto, inan no oan sira.
- Hodi suporta kampaña vasinasaun kontra COVID-19 ne'ebé la'o hela, UNICEF fo apoiu ba SAMES liu husi distribuisaun vasina AstraZeneca no Pfizer ba munisípiu hotu no haforsa kapasidade armazen rejional hodi rai vasina sira.
- Avaliasaun ba distribuisaun bee kompleta ona iha CHC sira ne'ebé ho presiza barak liu iha Covalima ne'ebé hili ona ba faze tuir mai iha melloramentu WASH husi UNICEF. Liutan, BEE TL no UNICEF identifika hamutuk ona área públiku hamutuk 15 iha Dili iha ne'ebé estasaun permanente ba fase liman sei hari'i ba.

ATUALIZASAUN EPIDEMIOLÓJIKU

1. Kazu COVID-19 kumulativu no kazu foun, relata to'o loron 1 Marsu 2022

Hanesan hatudu iha gráfiku epi tuir mai ne'e, número kazu insidente sei kontinua ho tendénsia desendente.



2. Distribuisaun kazu no kazu óbitu tuir munisípiu

Distribusaun kazu foun ne'ebé relata, kazu rekuperadu no kazu ativu tuir munisípiu, to'o loron 22 Fevereiru 2022

Munisípiu	Kazu foun (23 Feb.-1 Mar. 2022)	Loron 7 - mudansa % (kazu)*	Kazu kumulativu	Kazu rekuperadu (23 Feb.-1 Mar. 2022)	Kazu rekuperadu kumulativu	Kazu óbitu foun (23 Feb.-1 Mar. 2022)	Kazu óbitu kumulativu	Kazu ativu (1 Mar. 2022)
Aileu	0	-100	136	10	135	0	1	0
Ainaro	6	100	302	69	293	0	3	6
Baucau	5	-85	1620	10	1571	0	7	42
Bobonaro	1	-98	735	46	709	1	10	16

Covalima	14	8	825	15	808	0	3	14
Dili	201	-53	16205	588	15808	2	86	311
Ermera	0	100	1120	0	1113	0	2	5
Lautem	0	100	187	0	181	0	5	1
Liquica	0	-100	132	5	131	0	1	0
Manatuto	0	-100	240	14	235	0	2	3
Manufahi	1	-50	272	3	271	0	0	1
RAEOA	3	0	423	2	416	0	3	4
Viqueque	0	0	519	0	514	0	5	0
TOTAL	231	-62	22716	762	22185	3	128	403

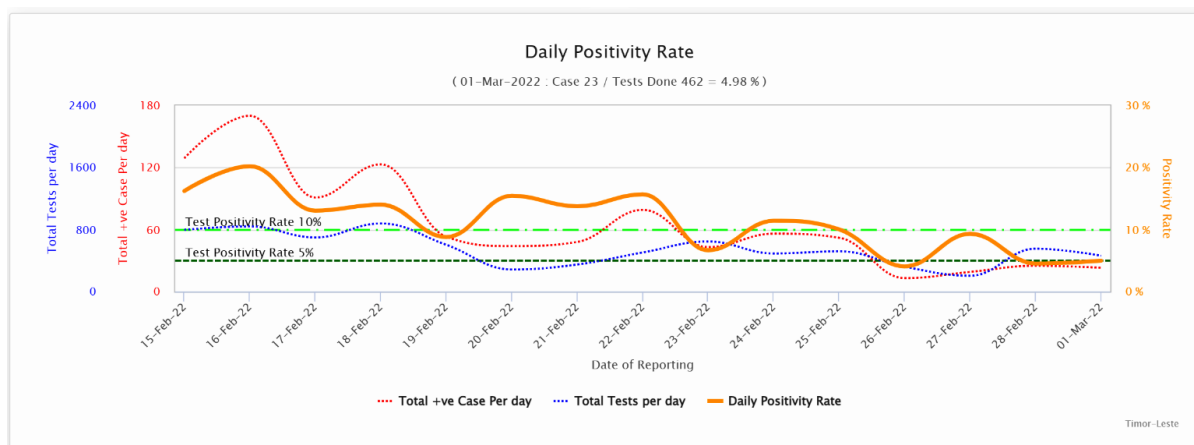
*Mudansa kazu COVID-19 kompara ho loron 7 ikus

- Total kazu foun hamutuk 231 ne'ebé relata iha períodu relatóriu (23 Fev. – 1 Mar. 2022), kompara ho kazu 608 ne'ebé relata iha periodu relatóriu ikus (16-22 Fev. 2022) ho redusaun 62%. Maioria husi kazu sira ne'e hotu (87%) detekta iha Dili, no seluk relata husi munisípiu Covalima, Baucau, Ainaro, Bobonaro, Oecusse, no Manufahi.
- Kazu óbitu hamutuk nain-3 mak relata ona iha períodu relatóriu ida ne'e, aumentu mate nain-2 kompara ho períodu relatóriu ikus.
- Númeru kazu ativu agora to'o loron 1 Marsu 2022 hamutuk na'in-403.

3. Teste diáriu, taxa pozitivu no taxa teste positividade

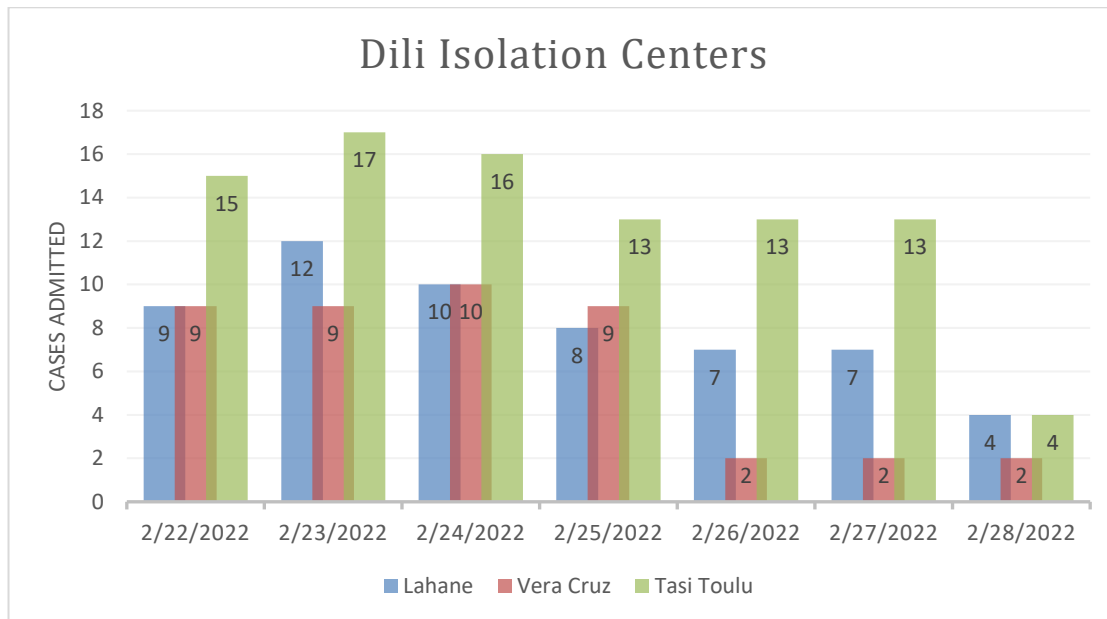
Durante data relatóriu atuál ida ne'e husi loron 23 Fev. – 1 Mar. 2022, halo ona teste ba amostra 5,006 kompara ho loron 7 liu ba teste ba amostra hamutuk 4,158.

Taxa teste positividade husi periodu relatóriu ida ne'e ho médiu 4.6%, kompara ho 14.6% hosi periodu relatóriu liuba. Figura tuir mai ne'e hatudu proporsaun teste, kazu no positividade ne'ebé hatudu momoos tendénsia desendente.



JESTAUN KAZU COVID-19

Foin lalais ne'e Sentru Izolamentu Vera Cruz komesa simu fali ona pasiente COVID-19. Sentru Izolamentu Lahane atende pasiente moderadu sira ho fator risku no kazu krítiku sira, enkuantu parte husi Tasi-Tolu admite kazu kma'an no moderadu sira ho fator risku. Husi figura tuir mai ne'e, hatudu katak númeru pasiente iha Lahane no Tasi-Tolu menus daudauk ona.



% okupante atual ba kama sira iha Sentru Izolamentu Lahane hamutuk 18%.

% okupante atual ba kama sira iha Sentru Izolamentu Tasi-Tolu hamutuk 2%.

% okupante atual ba kama sira iha Sentru Izolamentu Vera Cruz hamutuk 2%.

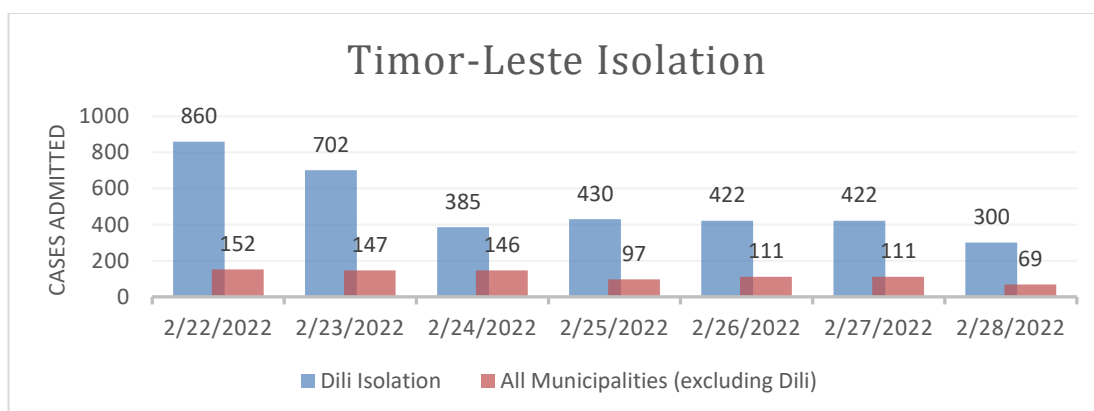


Figura leten ne'e hatudu total númeru pasiente ne'ebé admite iha sentru izolamentu no auto-isolamentu (iha uma) iha munisípiu 12 kompara ho Dili. Iha Timor-Leste laran tomak, pasiente admite iha sentru izolamentu sira kontinua menus konstantemente.

IMUNIZASAUN COVID-19

Iha periodu relatóriu ida ne'e (01 Marsu 2022 dadeer), total doze vasina COVID-19 ne'ebé administra 1,264,542 kompostu husi doze dahuluk 679,721 (kobertura 84.7% entre populasaun idade 18 no liu no 22.2% entre populasaun idade 12 to'o <18) no doze daruak 573,230 (kobertura 71.9% entre populasaun idade 18 no liu, 16.9% entre populasaun idade 12 to'o <18), doze *booster* 11,580 (kobertura 1.5% entre populasaun idade 18 no liu) maka administra ona iha territóriu Timor-Leste tomak. Detallu husi númeru doze vasina ne'ebé administra ona no kobertura tuir produktu vasina no doze vasina nian bele refere ba Tabela no figura hamutuk 6 tuir mai ne'e.

Tabela 1: Númeru doze vasina COVID-19 ne'ebé administra ona no kobertura iha Dili no Timor-Leste tuir vasina nia marka no doze sira, atualizada to'o 10:00hrs 01/03/2022

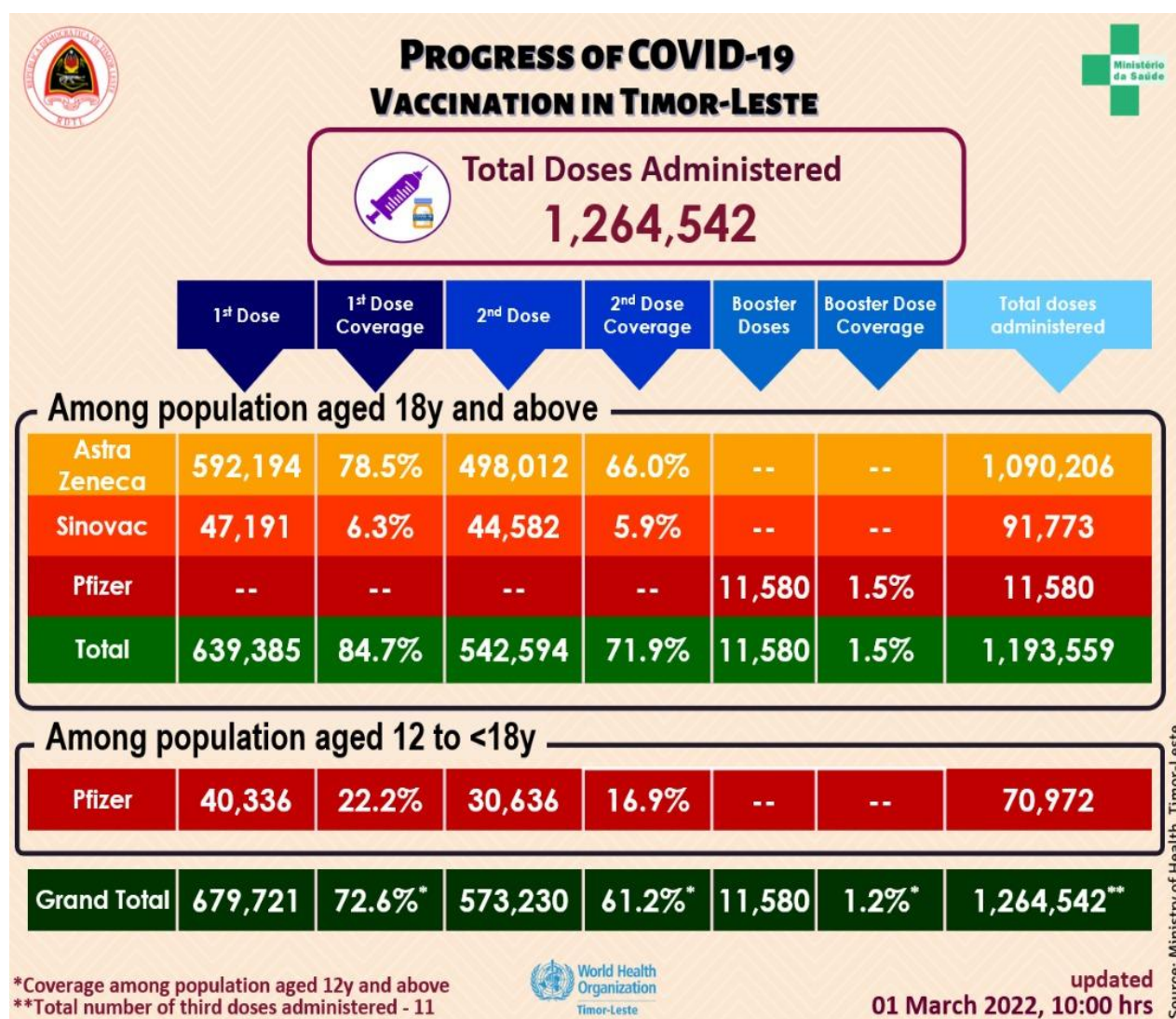


Figura 1: Kobertura vasina COVID-19 ba populasaun tinan 18 ba leten tuir munisípiu iha Timor-Leste atualizada 10:00hrs 01/03/2022

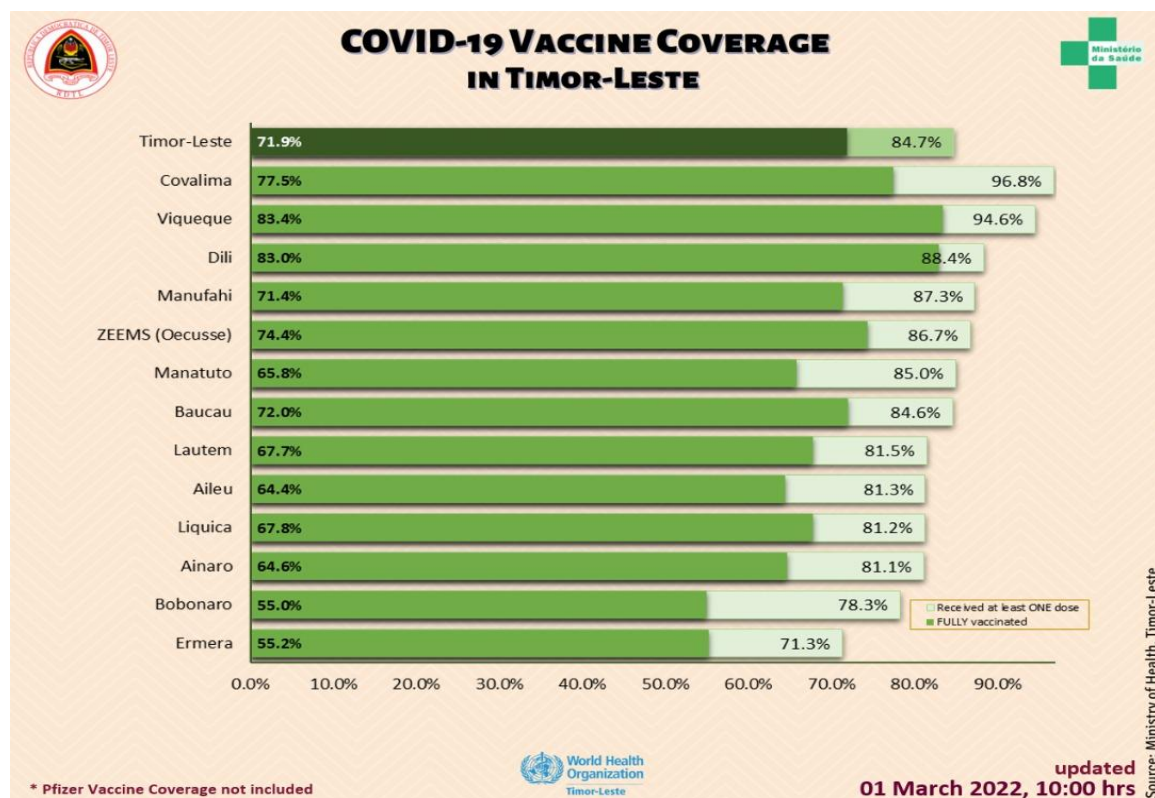


Tabela 2: Númeru ema sira ne'ebé simu vasina ho produktu vasina hotu (AstraZeneca, Sinovac, no Pfizer) no EADI tuir sexu iha kada munisípiu iha Timor-Leste, atualizada to'o 10:00 hrs 01/03/2022

Municipality	Number Vaccinated									AEFI		
	First Dose			Second Dose			Third & Booster			Male	Female	Total
	Male	Female	Total	Male	Female	Total	Male	Female	Total			
Dili	122,558	104,415	226,973	110,326	97,733	208,059	6,691	3,665	10,356	14	26	40
Aileu	12,964	12,432	25,396	10,069	10,055	20,124	-	-	-	1	1	2
Ainaro	14,450	14,054	28,504	11,265	11,445	22,710	-	-	-	0	0	0
Baucau	30,694	31,344	62,038	26,073	26,686	52,759	520	175	695	0	0	0
Bobonaro	22,254	22,157	44,411	15,721	15,501	31,222	49	28	77	4	6	10
Covalima	19,379	19,566	38,945	15,618	15,553	31,171	-	-	-	7	6	13
Ermera	28,301	26,361	54,662	21,236	20,262	41,498	10	2	12	0	0	0
Lautem	14,202	15,491	29,693	11,431	13,234	24,665	-	-	-	2	0	2
Liquica	18,759	19,152	37,911	15,072	15,573	30,645	68	33	101	0	1	1
Manatuto	12,396	11,763	24,159	9,444	9,259	18,703	-	-	-	2	0	2
Manufahi	14,934	14,184	29,118	12,090	11,716	23,806	-	-	-	1	2	3
Viqueque	20,217	21,336	41,553	17,600	19,055	36,655	213	137	350	6	0	6
ZEEMS (Oecusse)	17,629	18,729	36,358	15,159	16,054	31,213	-	-	-	0	0	0
Total (without Dili)	226,179	226,569	452,748	180,778	184,393	365,171	860	375	1,235	23	16	39
Total (Timor-Leste)	348,737	330,984	679,721	291,104	282,126	573,230	7,551	4,040	11,591	37	42	79

Figura 2: Progresu semanál imunizasaun COVID-19 iha Timor-Leste atualizada to'o 10:00 hrs 27/02/2022

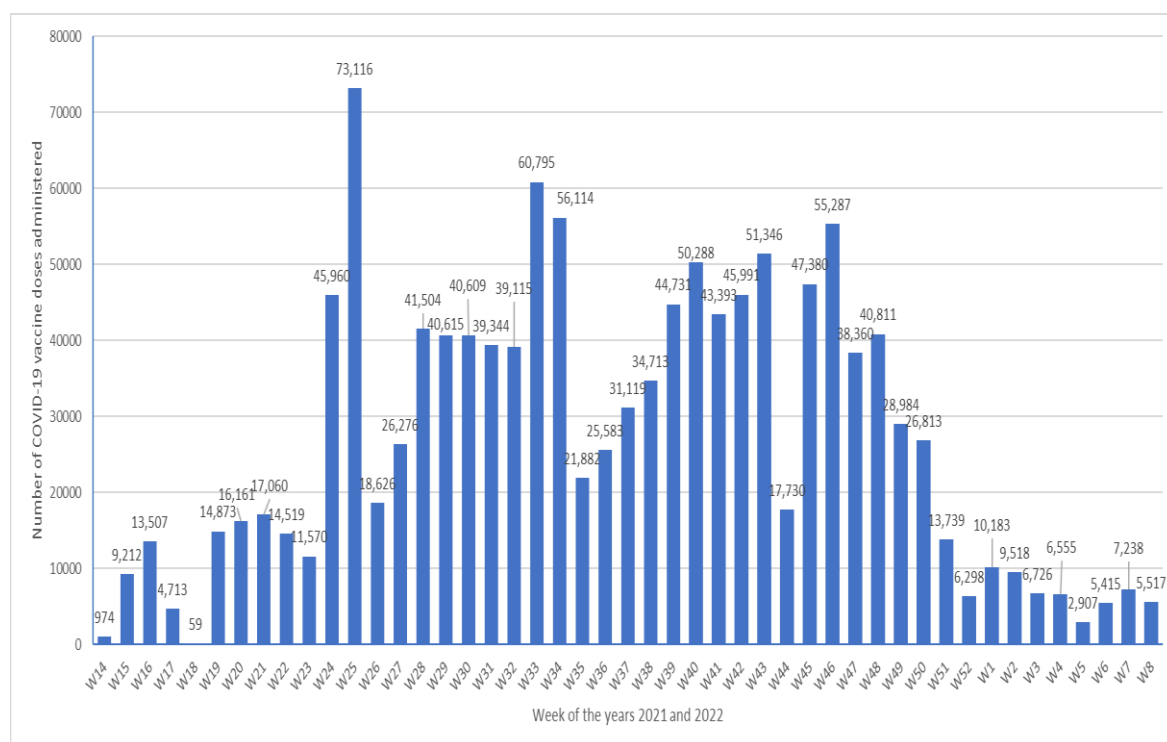


Tabela 3: Númeru populusaun idade 12 to'o <18 no liu* ne'ebé simu vasina Pfizer no kobertura tuir munisípiu iha Timor-Leste, atualizada to'o 10:00hrs 01/03/2022

Municipality	12to <18y Population	First Dose				Second Dose			
		12 to <18y Students	12 to <18y Non-students	Total	Coverage	12 to <18y Students	12 to <18y Non-students	Total	Coverage
Dili	41,822	37,987	44	38,031	90.9%	30,610	24	30,634	73.2%
Aileu	7,770	-	-	-	0.0%	-	-	-	0.0%
Ainaro	10,253	-	-	-	0.0%	-	-	-	0.0%
Baucau	18,189	6	-	6	0.0%	-	-	-	0.0%
Bobonaro	14,466	-	-	-	0.0%	-	-	-	0.0%
Covalima	9,729	-	-	-	0.0%	-	-	-	0.0%
Ermera	20,564	1,082	-	1,082	5.3%	-	-	-	0.0%
Lautem	10,447	-	-	-	0.0%	-	-	-	0.0%
Liquica	11,137	1,214	-	1,214	10.9%	1	-	1	0.0%
Manatuto	7,108	-	-	-	0.0%	-	-	-	0.0%
Manufahi	8,267	-	-	-	0.0%	-	-	-	0.0%
Viqueque	11,490	-	2	2	0.0%	1	-	1	0.0%
ZEEMS (Oecusse)	10,565	-	-	-	0.0%	-	-	-	0.0%
Total (without Dili)	139,985	2,302	2	2,304	1.6%	2	-	2	0.0%
Total (Timor-Leste)	181,807	40,289	46	40,335	22.2%	30,612	24	30,636	16.9%

*Based on 2021 population projections

Total Vaccinated (both doses) 70,971

Tabela 4: Númeru ema individuu entre populusaun elijivel sira (tinan 18 no liu*) ne'ebé vasinadu ona ho vasina COVID-19 AstraZeneca no Sinovac iha Timor-Leste no kobertura atualizada to'o 10:00hrs 01/03/2022

Municipality	Eligible Population			Number vaccinated & Coverage																	
	High Risk Groups (20% Pop.)	18-59y no comorbidity (80% Pop.)	Total	First Dose						Second Dose						Booster Dose					
				High Risk Groups (20% Pop.)	Coverage	18-59y no comorbidity (80% Pop.)	Coverage	Total	Coverage	High Risk Groups (20% Pop.)	Coverage	18-59y no comorbidity (80% Pop.)	Coverage	Total	Coverage	High Risk Groups (20% Pop.)	Coverage	18-59y no comorbidity (80% Pop.)	Coverage	Total	Coverage
Dili	29,980	183,822	213,802	53,628	170.9%	135,313	73.6%	188,941	88.4%	34,506	115.1%	142,919	77.7%	177,425	83.0%	3994	1.9%	6351	3.0%	10345	4.8%
Aileu	6,292	24,943	31,235	13,039	207.2%	12,357	49.5%	25,396	81.3%	10,984	174.6%	9,140	36.6%	20124	64.4%	0	0.0%	0	0.0%	0	0.0%
Ainaro	7,410	27,726	35,136	6,736	90.9%	21,768	78.5%	28,504	81.1%	5,137	69.3%	17,573	63.4%	22710	64.6%	0	0.0%	0	0.0%	0	0.0%
Baucau	18,141	55,175	73,316	17,550	96.7%	44,482	80.6%	62,032	84.6%	13,468	74.2%	39,291	71.2%	52759	72.0%	646	0.9%	49	0.1%	695	0.9%
Bobonaro	13,268	43,476	56,744	11,100	83.7%	33,311	76.6%	44,411	78.3%	7,443	56.1%	23,779	54.7%	31222	55.0%	77	0.1%	0	0.0%	77	0.1%
Covalima	8,725	31,503	40,228	10,211	117.0%	28,734	91.2%	38,945	96.8%	7,328	84.0%	23,843	75.7%	31171	77.5%	0	0.0%	0	0.0%	0	0.0%
Ermera	14,350	60,793	75,143	11,137	77.6%	42,443	69.8%	53,580	71.3%	6,941	48.4%	34,557	56.8%	41488	55.2%	12	0.0%	0	0.0%	12	0.0%
Lautem	8,455	27,963	36,418	8,499	100.5%	21,194	75.8%	29,693	81.5%	6,959	82.3%	17,706	63.3%	24665	67.7%	0	0.0%	0	0.0%	0	0.0%
Liquica	9,588	35,597	45,185	9,214	96.1%	27,483	77.2%	36,697	81.2%	7,123	74.3%	23,521	66.1%	30644	67.8%	101	0.2%	0	0.0%	101	0.2%
Manatuto	6,701	21,718	28,419	6,901	103.0%	17,258	79.5%	24,159	85.0%	4,859	72.5%	13,844	63.7%	18703	65.8%	0	0.0%	0	0.0%	0	0.0%
Manufahi	7,595	25,766	33,361	9,775	128.0%	19,393	75.3%	29,118	87.3%	9,519	125.3%	14,287	55.4%	23806	71.4%	0	0.0%	0	0.0%	0	0.0%
Viqueque	11,034	32,905	43,939	12,550	113.7%	29,001	88.1%	41,551	94.6%	10,581	95.9%	26,073	79.2%	36654	83.4%	341	0.8%	9	0.0%	350	0.8%
ZEEMS (Ducusse)	9,408	32,534	41,942	11,642	123.7%	24,710	76.0%	36,358	86.7%	8,189	87.0%	23,024	70.8%	31,213	74.4%	0	0.0%	0	0.0%	0	0.0%
Total (without Dili)	120,967	420,098	541,065	128,304	106.1%	322,140	76.7%	450,444	83.3%	98,531	81.5%	266,638	63.5%	365,169	67.5%	1177	0.2%	58	0.0%	1235	0.2%
Total (Timor Leste)	150,947	601,920	754,867	181,932	120.5%	457,453	75.75%	639,385	84.7%	133,037	88.1%	409,557	67.8%	542,594	71.9%	5171	0.7%	6409	0.8%	11580	1.5%

*Based on 2021 population projections. Population with Comorbidity 12.5% among 18-59y based on 2016 DHS data
 High Risk Groups (20% of the population) - Healthcare staff, other front line staff, aged 65y and above, and 18-59y with comorbidity
 18-59y with no comorbidity (80% of the population)

Total Vaccinated (all doses) 1,193,559 (Total No. of third Doses - 11)

ANALIZE SITUASAUN

- Númeru kazu insidente no paciente sira ospital kontinua menus. Médiu taxa teste positividade iha loron hitu liu ba tun liu 5% nia okos ba dahuluk dezde inísiu bainhira foin tama iha onda transmisaun ida daudauk ne'e. Númeru kazu ativu tun to'o ba pontu ki'ik liu ne'ebé foun. Evidensia sira hotu hatudu katak onda Omicron daudauk ne'e parese besik hotu ona iha rai laran.
- Enkuantu kazu COVID-19 sei kontinua relata iha rai laran iha tempu balun nia laran, parese tempu diak hodi komesa diskusaun kona ba estratejia no oráriu ba rekuperasaun. Hanesan saida mak ita bele haree husi nasaun barak iha mundu, restrisaun relasiona ho COVID-19 konstantemente ka radikalmente hapara, no moris sosial no ekonómiku komesa fila fali ba normal. Ba Timor-Leste, iha restrisaun balun relasiona ho viajen internasional ne'ebé iha impaktu boot ba moris, turismu no servisu ospitalidade sira. Governu bele konsidera ajusta no hasai neneik restrisaun hirak ne'e.
- Iha tempu hanesan, vijilánsia no teste presiza kontinua haforsa, hamutuk ho kontinuasaun vasina, liuliu iha área remota sira no populsasaun ne'ebé araska hetan atendimento.

REKURSU NE'EBÉ DISPONIVEL

- [Ba públiku jerál no profesionál saúde sira kona-ba prevensaun, tratamentu, no vasina, nsst.](#)
- [Rekomendasaun OMS ba Desizaun Relasiona ho COVID-19](#)
- Kursu gratuita iha Tetum – [OpenWHO.org](#)

KONTAKTU MÉDIA NO INFORMASAUN KONA-BA COVID-19

- Ministériu Saúde estabelese ona númeru *hotline* – 119 – ba COVID-19 ne'ebé maka ema hotu-hotu bele kontaktu hodi hetan informasaun relasiona ho COVID-19
- Alende ne'e, [Páijina Facebook MS](#) nian fornese atualizasaun loloos kona-ba desenvolvimentu COVID-19 iha rai laran
- OMS Timor-Leste liuhusi nia [Páijina Facebook](#) no [Twitter](#) mós disemina informasaun kona-ba medida preventiva, pergunta no resposta, *myth-buster* no atualizasaun ikus kona-ba COVID-19 iha mundu tomak no iha rai laran. Ba media no pedidu ba entrevista bele manda ba hasane@who.int ka wcotimorleste@who.int