

# Moras virus Corona 2019 (COVID-19)

Relatóriu Situasaun – 142

## Timor-Leste



World Health  
Organization

Timor-Leste

\*Dadus relata to'o loron 8 Marsu 2022

### SITUASAUN IHA NÚMERU

#### TIMOR-LESTE



Kumulativu  
**22,768 (52)**



Rekuperadu (foun)  
**22,520 (335)**



Kazu ativu  
**119**



Óbitu (foun)  
**129 (1)**

#### GLÓBÁL



Kazu  
**445,096,612**



Óbitu  
**5,998,301**

#### PROGRESU IMUNIZASAUN COVID-19



Doze 1<sup>a</sup> – **682,658**  
Kobertura – **84.8%\*\***



Doze 2<sup>a</sup> – **574,722**  
Kobertura – **72.1%\*\***

\* Bazeia ba dadus ne'ebé pública husi [Ministerio da Saúde](#)

\*\* Ba populasaun adultu tinan 18 ba leten

#### PROGRESU IMUNIZASAUN COVID-19



Doze vasina  
**10,704,043,684**

### SUMÁRIU

- Dezde edisaun ikus relatóriu situasaun, Ministeriu Saúde relata hamutuk **52** kazu foun COVID-19, kazu rekuperadu **335** no kazu óbitu **1**. Número kazu insidente tun 77% kompara ho períodu relatóriu ikus.
- Projetu “Say No to 5S” oficialmente lansa ona iha loron 8 Marsu 2022. Projetu ida ne'e hetan apoiu husi KOICA ho kontribuisaun hamutuk tokon US\$ 7.8 hodi mellora saúde no nutrisaun ba labarik estudante sira iha Timor-Leste. Parseria entre WFP no OMS ne'e, ho apoiu husi KOICA, sei fo dalan ba ita hodi halo impaktu ne'ebé boot no kleur ba *bem-estar* povu Timorensen nian. 5S signifika *Starvation*/Hamlaha, *Soil-transmitted helminthiasis*/Helmitíaze transmite husi rai, *Skin diseases*/Moras kulit, *Smoking*/Fuma no *Sugary/alcoholic drinks*/Bebidas kontein masin-midar/alkoóliku.
- OMS nia asesor internasional grupu daruak koloka ona iha munisípiu 10 hodi hala'o kampaña vasinasaun kontra COVID-19. Antes tun ba baze, informa ona sira kona-ba aspektu tékniku oioin, inklui *tracker* ba imunizasaun. OMS ho UNICEF kontinua fo apoiu ba Ministériu Saúde hodi hala'o advokasia no asaun sensibilizasaun iha rai laran tomak hodi suporta tarjetu nasional ba hetan pelumenuz 90% husi ema sira hotu ne'ebé elijível ba hetan doze daruak ba

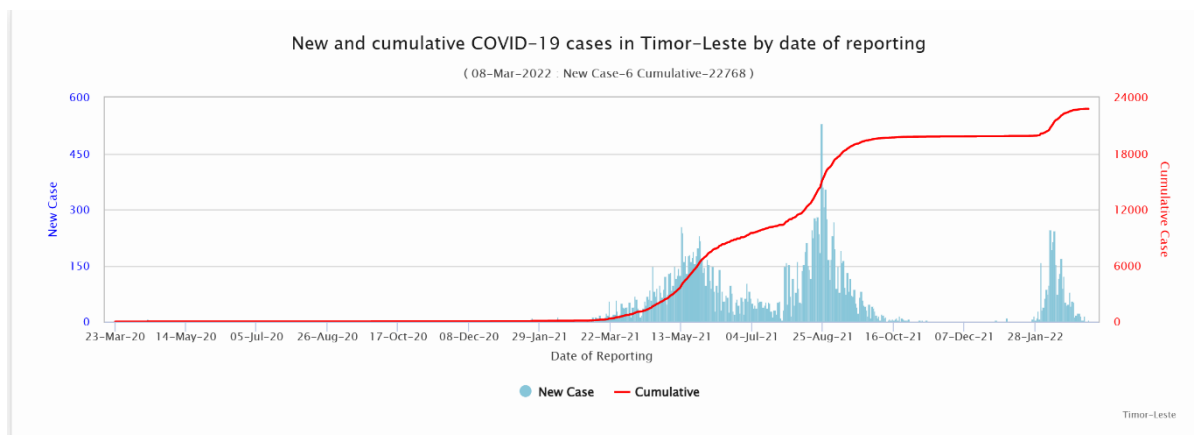
vasina kontra COVID ate Juñu 2022.

- Grupu ida konsiste espesialista denge na'in-3 to'o ona iha Timor-Leste hodi fornese apoiu tékniku ba prevensaun no jestaun kazu denge iha rai laran. Ekipa ne'e inklui espesialista klíniku no saúde pública no entemolojista ida ho objetivu atu atualiza matadalan klínika no kontrole vetor sira, no mos fornese treinamentu ba pesoál saúde pública no ba médiku sira.
- UNICEF halo hela koordensaun ho MS, OMS, doador no parseiru prisipal sira hodi monitoriza taxa utilizaun diária vasina AstraZeneca no Pfizer iha nível munisipal, inklui uzu antes prazu liu. UNICEF mos suporta SAMES kona-ba distribuisaun vasina no ajuda monitor besik utilizaun hodi prevene soe estraga vasina.
- Bazeia ba aprovasaun ba planu husi Ministériu Saúde, UNICEF lansa ona lisitasaun hodi konstrui estasaun fase liman permanente hamutuk 14 ho rekursu ba ema ho defisiensia no labarik sira iha fatin públiku sira ne'ebé hili ona.
- UNDP Timor-Leste entrega ona 50 konjuntu Monitor Sinal Vital iM3 no Monitor ba Pasiente iM80 ba Ministériu Saúde hanesan parte ida husi UNDP nia implementasaun Projetu Prokuramentu Saúde Fase 2 ne'ebé kofinasiadu husi UNDP no Governu Timor-Leste. Sei iha ekipamentu no suprimentu médiku barak tan ne'ebé sei to'o Dili iha loron hira tuir mai.

## ATUALIZASAUN EPIDEMIOLÓJIKU

### 1. Kazu COVID-19 kumulativu no kazu foun, relata to'o loron 8 Marsu 2022

Hanesan hatudu iha gráfiku epi tuir mai ne'e, númeru kazu insidente sei kontinua ho tendénsia desendente iha semana da-4 tutuir malu.



### 2. Distribuisaun kazu no kazu óbitu tuir munisípiu

Distribusaun kazu foun ne'ebé relata, kazu rekuperadu no kazu ativu tuir munisípiu, to'o loron 8 Marsu 2022

Munisípiu	Kazu foun (2-8 Mar. 2022)	Loron 7 - mudansa % (kazu)*	Kazu kumulativu	Kazu rekuperadu (2-8 Mar. 2022)	Kazu rekuperadu kumulativu	Kazu óbitu foun (2-8 Mar. 2022)	Kazu óbitu kumulativu	Kazu ativu (8 Mar. 2022)
Aileu	0	0	136	0	135	0	1	0
Ainaro	0	-100	302	6	299	0	3	0
Baucau	3	-40	1623	28	1599	0	7	17
Bobonaro	0	-100	735	16	725	0	10	0
Covalima	7	-50	832	15	823	0	3	6
Dili	41	-80	16246	257	16065	1	87	94
Ermera	0	0	1120	5	1118	0	2	0
Lautem	0	0	187	1	182	0	5	0
Liquica	0	0	132	0	131	0	1	0
Manatuto	0	0	240	3	238	0	2	0
Manufahi	0	-100	272	1	272	0	0	0
RAEOA	1	-67	424	3	419	0	3	2
Viqueque	0	0	519	0	514	0	5	0
<b>TOTAL</b>	<b>52</b>	<b>-77</b>	<b>22768</b>	<b>335</b>	<b>22520</b>	<b>1</b>	<b>129</b>	<b>119</b>

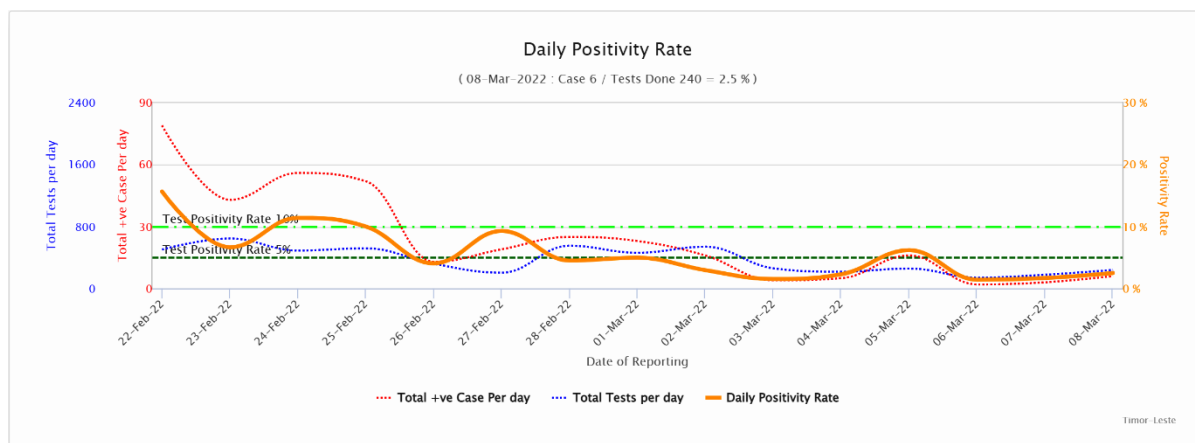
\*Mudansa kazu COVID-19 kompara ho loron 7 ikus

- Total kazu foun hamutuk 52 ne'ebé relata iha períodu relatóriu (2-8 Mar. 2022), kompara ho kazu 231 ne'ebé relata iha periodu relatóriu ikus (23 Feb. – 1 Mar. 2022) ho redusaun 77%. Maioria husi kazu sira ne'e hotu (79%) detekta iha Dili, no seluk relata husi munisípiu Covalima, Baucau, no Oecusse.
- Kazu óbitu hamutuk 1 mak relata ona iha períodu relatóriu ida ne'e, reduz husi 3 kompara ho períodu relatóriu ikus.
- Númeru kazu ativu agora to'o loron 8 Marsu 2022 hamutuk na'in-119.

### 3. Teste diáriu, taxa pozitivu no taxa teste positividade

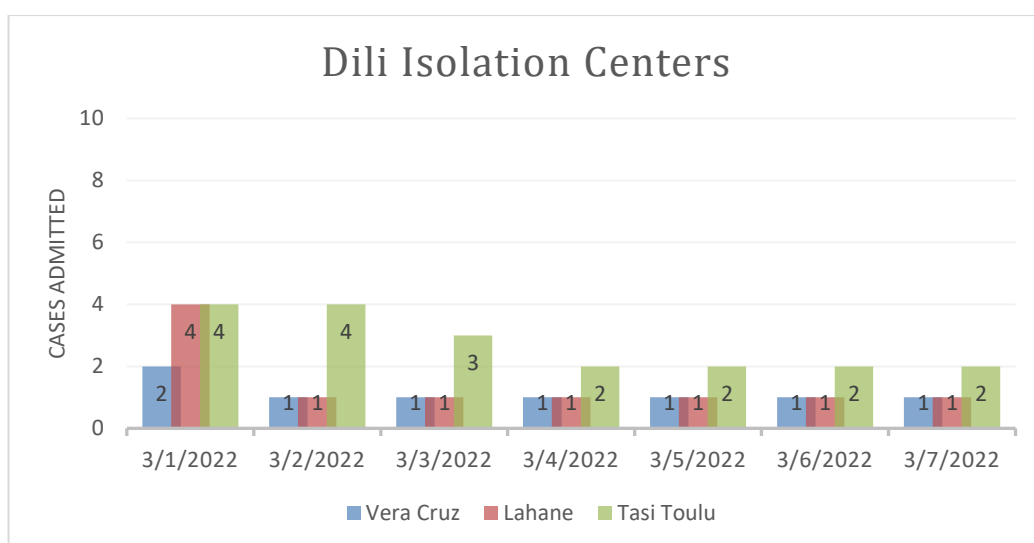
Durante data relatóriu atuál ida ne'e husi loron 2-8 Mar. 2022, halo ona teste ba amostra 1,835 kompara ho loron 7 liu ba teste ba amostra hamutuk 3,195, reduz 43%.

Taxa teste positividade husi periodu relatóriu ida ne'e ho médiu 2.8%. Figura tuir mai ne'e hatudu proporsau teste, kazu no positividade ne'ebé hatudu momoos tendénsia desendente.



## JESTAUN KAZU COVID-19

Sentru Izolamentu Lahane no Vera Cruz halo hela tratamentu ba paciente ho fator risku no kazu krítiku sira, enkuantu parte husi Sentru Izolamentu Tasi-Tolu admite kazu kma'an no moderadu sira ne'ebé iha fator risku. Husi figura tuir mai ne'e, hatudu númeru paciente iha izolamentu no sentru tratamentu sira iha Dili reduz ona.

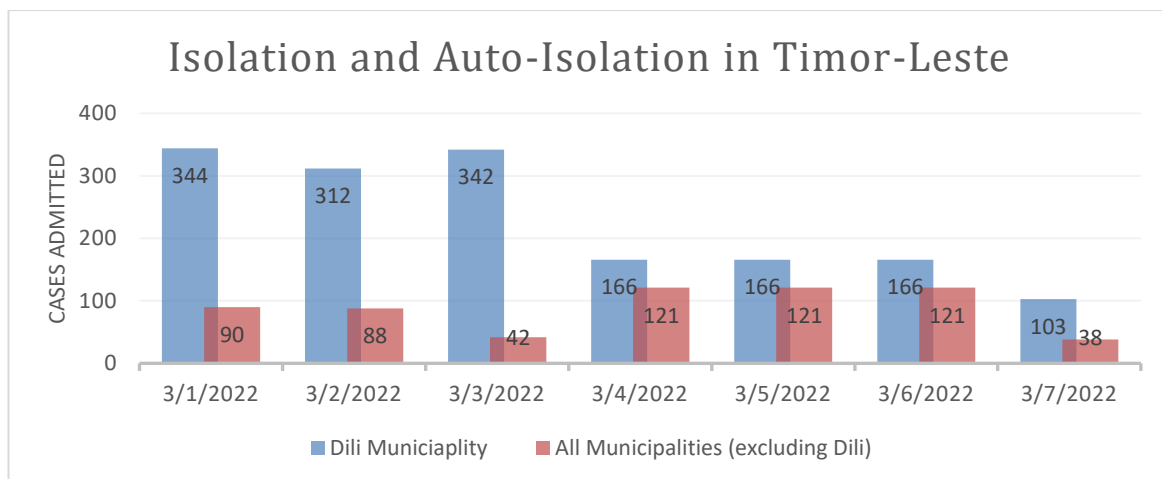


% okupante atual ba kama sira iha Sentru Izolamentu Lahane hamutuk 5%.

% okupante atual ba kama sira iha Sentru Izolamentu Tasi-Tolu hamutuk 0.08%.

% okupante atual ba kama sira iha Sentru Izolamentu Vera Cruz hamutuk 1%.

Figura tuir mai ne'e hatudu total númeru paciente ne'ebé admite iha sentru izolamentu no auto-izolamentu (iha uma) iha munisípiu 12 kompara ho Dili. Iha Timor-Leste laran tomak, paciente admite iha sentru izolamentu sira kontinua menus konstantemente.



## IMUNIZASAUN COVID-19

Iha periodu relatóriu ida ne'e (08 Marsu 2022 dadeer), total doze vasina COVID-19 ne'ebé administra 1,270,066 kompostu husi doze dahuluk 682,658 (kobertura 84.8% entre populasau idade 18 no liu no 23.3% entre populasau idade 12 to'o <18) no doze daruak 574,722 (kobertura 72.1% entre populasau idade 18 no liu, 16.9% entre populasau idade 12 to'o <18), doze *booster* 12,675 (kobertura 1.7% entre populasau idade 18 no liu) maka administra ona iha territóriu Timor-Leste tomak. Detallu husi número doze vasina ne'ebé administra ona no kobertura tuir produktu vasina no doze vasina nian bele refere ba Tabela no figura hamutuk 6 tuir mai ne'e.

**Tabela 1: Número doze vasina COVID-19 ne'ebé administra ona no kobertura iha Dili no Timor-Leste tuir vasina nia marka no doze sira, atualizada to'o 10:00hrs 01/03/2022**

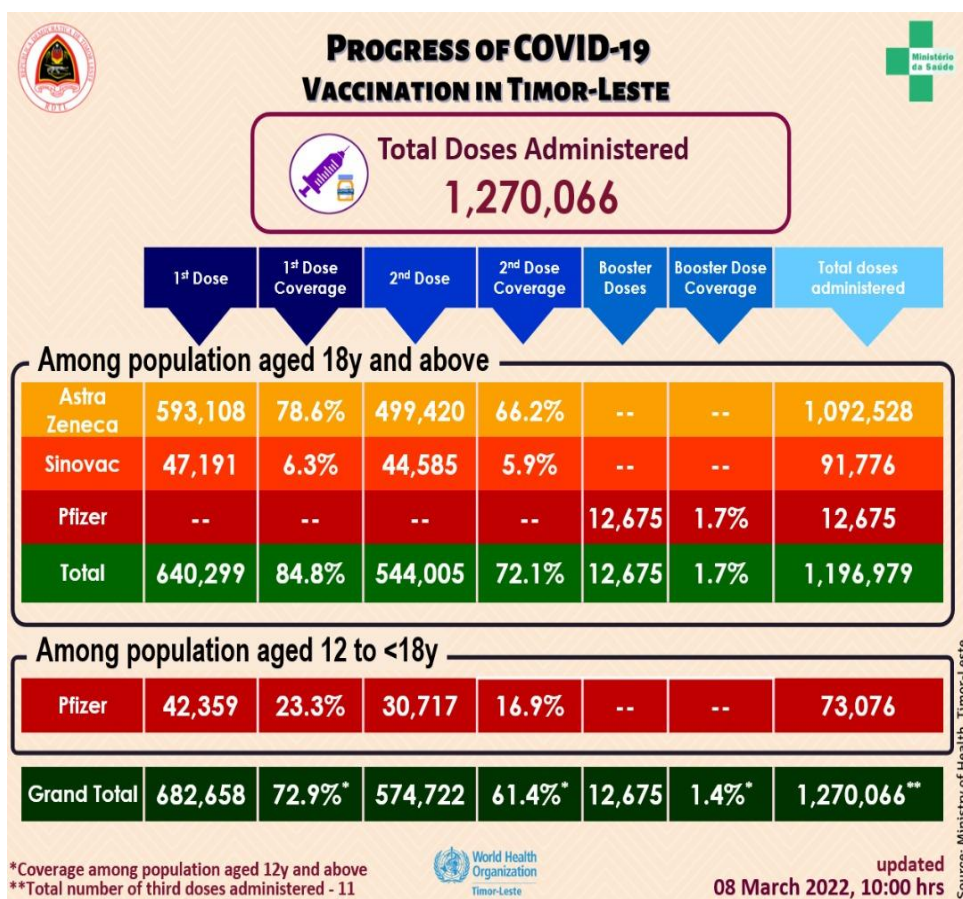




Figura 1: Kobertura vasina COVID-19 ba populasaun tinan 18 ba leten tuir munisípiu iha Timor-Leste atualizada 10:00hrs 08/03/2022

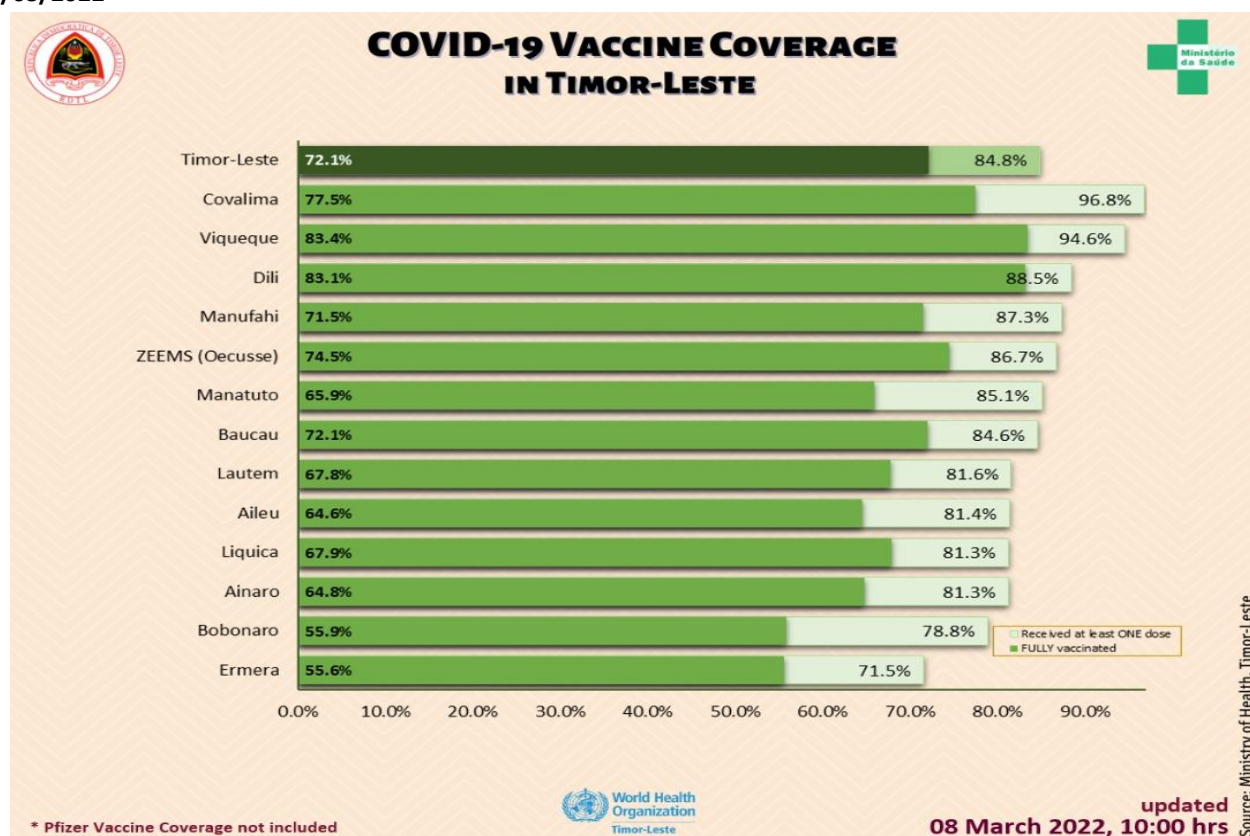


Tabela 2: Númeru ema sira ne'ebé simu vasina ho produktu vasina hotu (AstraZeneca, Sinovac, no Pfizer) no EADI tuir sexu iha kada munisípiu iha Timor-Leste, atualizada to'o 10:00 hrs 08/03/2022

Municipality	Number Vaccinated									AEFI		
	First Dose			Second Dose			Third & Booster			Male	Female	Total
	Male	Female	Total	Male	Female	Total	Male	Female	Total			
Dili	122,680	104,551	227,231	110,498	97,934	208,432	7,319	4,029	11,348	14	26	40
Aileu	12,977	12,441	25,418	10,094	10,084	20,178	-	-	-	1	1	2
Ainaro	14,470	14,078	28,548	11,302	11,477	22,779	-	-	-	0	0	0
Baucau	30,702	31,358	62,060	26,104	26,727	52,831	536	184	720	0	0	0
Bobonaro	22,392	22,349	44,741	15,909	15,805	31,714	76	36	112	4	6	10
Covalima	19,379	19,566	38,945	15,618	15,553	31,171	-	-	-	7	6	13
Ermera	28,588	26,651	55,239	21,349	20,411	41,760	11	2	13	0	0	0
Lautem	14,206	15,495	29,701	11,438	13,243	24,681	-	-	-	2	0	2
Liquica	19,550	19,989	39,539	15,094	15,601	30,695	77	42	119	0	1	1
Manatuto	12,404	11,780	24,184	9,459	9,278	18,737	-	-	-	2	0	2
Manufahi	14,940	14,189	29,129	12,104	11,741	23,845	-	-	-	1	2	3
Viqueque	20,217	21,345	41,562	17,603	19,065	36,668	224	150	374	6	0	6
ZEEMS (Oecusse)	17,631	18,730	36,361	15,168	16,063	31,231	-	-	-	0	0	0
Total (without Dili)	227,456	227,971	455,427	181,242	185,048	366,290	924	414	1,338	23	16	39
Total (Timor-Leste)	350,136	332,522	682,658	291,740	282,982	574,722	8,243	4,443	12,686	37	42	79

Figura 2: Progresu semanál imunizasaun COVID-19 iha Timor-Leste atualizada to'o 10:00 hrs 06/03/2022

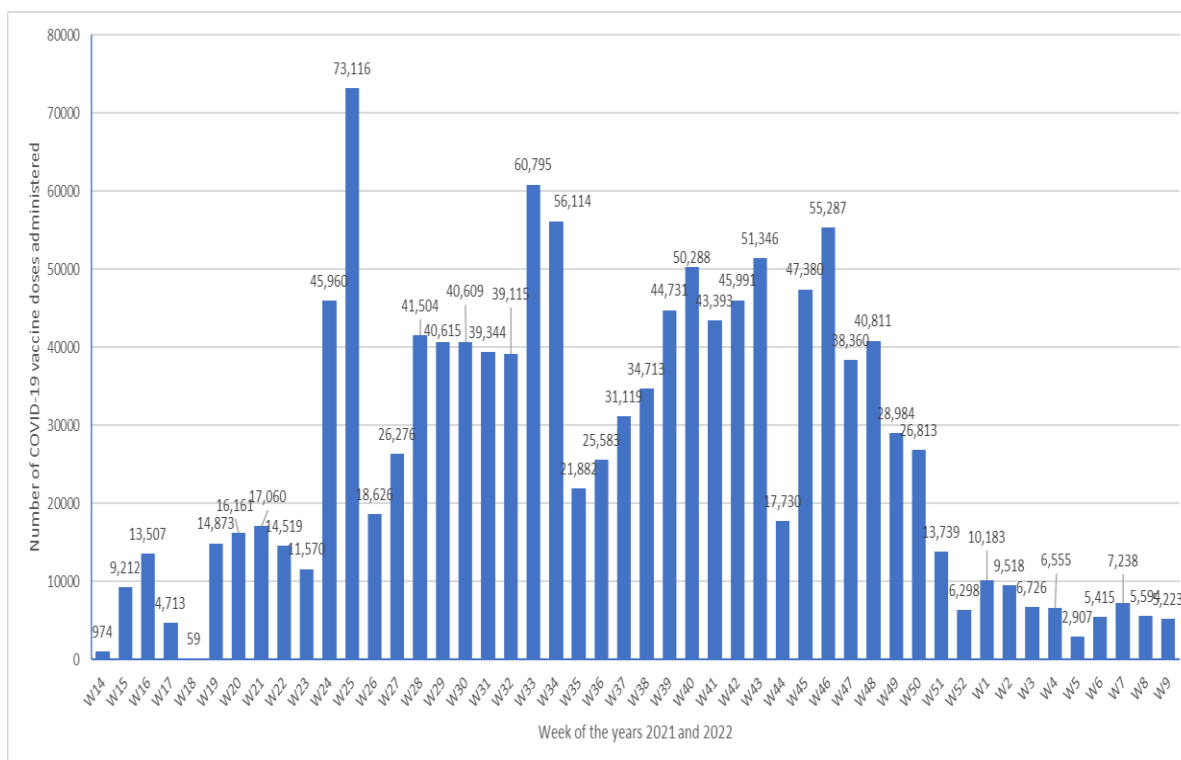


Tabela 3: Númeru populasaun idade 12 to'o <18 no liu\* ne'ebé simu vasina Pfizer no kobertura tuir munisípiu iha Timor-Leste, atualizada to'o 10:00hrs 08/03/2022

Municipality	12to <18y Population	First Dose				Second Dose			
		12 to <18y Students	12 to <18y Non-students	Total	Coverage	12 to <18y Students	12 to <18y Non-students	Total	Coverage
Dili	41,822	38,008	46	38,054	91.0%	30,689	25	30,714	73.4%
Aileu	7,770	-	-	-	0.0%	-	-	-	0.0%
Ainaro	10,253	-	-	-	0.0%	-	-	-	0.0%
Baucau	18,189	6	-	6	0.0%	-	-	-	0.0%
Bobonaro	14,466	-	-	-	0.0%	-	-	-	0.0%
Covalima	9,729	-	-	-	0.0%	-	-	-	0.0%
Ermera	20,564	1,474	-	1,474	7.2%	-	-	-	0.0%
Lautem	10,447	-	-	-	0.0%	-	-	-	0.0%
Liquica	11,137	2,822	-	2,822	25.3%	1	-	1	0.0%
Manatuto	7,108	-	-	-	0.0%	-	-	-	0.0%
Manufahi	8,267	-	-	-	0.0%	-	-	-	0.0%
Viqueque	11,490	-	2	2	0.0%	1	-	1	0.0%
ZEEMS (Oecusse)	10,565	-	-	-	0.0%	-	-	-	0.0%
Total (without Dili)	139,985	4,302	2	4,304	3.1%	2	-	2	0.0%
<b>Total (Timor-Leste)</b>	<b>181,807</b>	<b>42,310</b>	<b>48</b>	<b>42,358</b>	<b>23.3%</b>	<b>30,691</b>	<b>25</b>	<b>30,716</b>	<b>16.9%</b>

\*Based on 2021 population projections

**Total Vaccinated (both doses) 73,074**



Tabela 4: Númeru ema individuu entre populasau elijivel sira (tinan 18 no liu\*) ne'ebé vasinadu ona ho vasina COVID-19 AstraZeneca no Sinovac iha Timor-Leste no kobertura atualizada to'o 10:00hrs 08/03/2022

Municipality	Eligible Population			Number vaccinated & Coverage																	
				First Dose						Second Dose						Booster Dose					
	High Risk Groups (20% Pop.)	18-59y no comorbidity (80% Pop.)	Total	High Risk Groups (20% Pop.)	Coverage	18-59y no comorbidity (80% Pop.)	Coverage	Total	Coverage	High Risk Groups (20% Pop.)	Coverage	18-59y no comorbidity (80% Pop.)	Coverage	Total	Coverage	High Risk Groups (20% Pop.)	Coverage	18-59y no comorbidity (80% Pop.)	Coverage	Total	Coverage
Dili	29,980	183,822	213,802	53,633	178.0%	135,543	73.7%	189,176	88.5%	34,511	115.1%	143,206	77.9%	177,717	83.1%	4030	1.9%	7307	3.4%	11337	5.3%
Aileu	6,292	24,943	31,235	13,050	207.4%	12,368	49.6%	25,418	81.4%	11,024	175.2%	9,154	36.7%	20,178	64.6%	0	0.0%	0	0.0%	0	0.0%
Ainaro	7,410	27,726	35,136	6,744	91.0%	21,804	78.6%	28,548	81.3%	5,146	69.4%	17,633	63.6%	22,779	64.8%	0	0.0%	0	0.0%	0	0.0%
Baucau	18,141	55,175	73,316	17,551	96.7%	44,503	80.7%	62,054	84.6%	13,479	74.3%	39,352	71.3%	52831	72.1%	656	0.9%	64	0.1%	720	1.0%
Bobonaro	13,268	43,476	56,744	11,138	83.9%	33,603	77.3%	44,741	78.8%	7,545	56.9%	24,169	55.6%	31714	55.9%	112	0.2%	0	0.0%	112	0.2%
Covalima	8,725	31,503	40,228	10,211	117.0%	28,734	91.2%	38,945	96.8%	7,328	84.0%	23,843	75.7%	31171	77.5%	0	0.0%	0	0.0%	0	0.0%
Ermera	14,350	60,793	75,143	11,148	77.7%	42,617	70.1%	53,765	71.5%	6,979	48.6%	34,781	57.2%	41760	55.6%	13	0.0%	0	0.0%	13	0.0%
Lautem	8,455	27,963	36,418	8,499	100.5%	21,202	75.8%	29,701	81.6%	6,960	82.3%	17,721	63.4%	24681	67.8%	0	0.0%	0	0.0%	0	0.0%
Liquica	9,588	35,597	45,185	9,222	96.2%	27,405	77.2%	36,717	81.3%	7,132	74.4%	23,562	66.2%	30694	67.9%	119	0.3%	0	0.0%	119	0.3%
Manatuto	6,701	21,718	28,419	6,911	103.1%	17,273	79.5%	24,184	85.1%	4,875	72.8%	13,862	63.8%	18737	65.9%	0	0.0%	0	0.0%	0	0.0%
Manufahi	7,595	25,766	33,361	9,725	128.0%	19,404	75.3%	29,129	87.3%	9,519	125.3%	14,326	55.6%	23845	71.5%	0	0.0%	0	0.0%	0	0.0%
Viqueque	11,034	32,905	43,939	12,550	113.7%	29,010	88.2%	41,560	94.6%	10,583	95.9%	26,084	79.3%	36667	83.4%	358	0.8%	16	0.0%	374	0.9%
ZEEMS (Dicasse)	9,408	32,534	41,942	11,642	123.7%	24,719	76.0%	36,361	86.7%	8,190	87.1%	23,041	70.8%	31,231	74.5%	0	0.0%	0	0.0%	0	0.0%
Total (without Dili)	120,967	420,098	541,065	128,391	106.1%	322,732	76.8%	451,123	83.4%	98,760	81.6%	267,528	63.7%	366,288	67.7%	1258	0.2%	80	0.0%	1338	0.2%
Total (Timor-Leste)	150,947	601,920	754,867	182,024	120.6%	458,275	75.88%	640,299	84.8%	133,271	88.3%	410,734	68.0%	544,005	72.1%	5288	0.7%	7387	1.0%	12675	1.7%

\*Based on 2021 population projections. Population with Comorbidity 12.5% among 18-59y based on 2016 DHS data

High Risk Groups (20% of the population) - Healthcare staff, other front line staff, aged 65y and above, and 18-59y with comorbidity

18-59y with no comorbidity (80% of the population)

Total Vaccinated (all doses) 1,196,979 (Total No. of third Doses - 11 )



## ANALIZE SITUASAUN

- Númeru kazu foun ne'ebé relata kontinua tun iha períodu relatóriu da-4 tutuir malu, ho loron barak iha períodu relatóriu ida ne'e númeru kazu insidente foun la to'o sanulu. Hanesan mos ho taxa teste positividade menus ba beibeik, no mos númeru pasiente redúz husi loron ba loron. Ida ne'e reafirma katak atuál onda transmisaun ne'e besik ona nia rohan.
- Daudauk ne'e kampaña polítika ba eleisaun prezidensial mos la'o hela iha rai laran tomak. Iha okaziaun barak ema balun de'it mak sei kumpri medidas saúde públika nian hanesan uza mascara, ida ne'e aumenta ba ita nia preokupasaun kona-ba hada'et virus ida ne'e. Ida ne'e bele tau risku adisional ba populasau vulneravel sira hanesan idozu sira ne'ebé seidauk hetan vasina. Tenke iha vijilánsia no foti asaun hodi prevene homosu problema refere.

## REKURSU NE'EBÉ DISPONIVEL

- [Ba públiku jerál no profesionál saúde sira kona-ba prevensaun, tratamentu, no vasina, nsst.](#)
- [Rekomendasaun OMS ba Desizaun Relasiona ho COVID-19](#)
- Kursu gratuita iha Tetum – [OpenWHO.org](#)

## KONTAKTU MÉDIA NO INFORMASAUN KONA-BA COVID-19

- Ministériu Saúde estabelese ona númeru *hotline* – 119 – ba COVID-19 ne'ebé maka ema hotu-hotu bele kontaktu hodi hetan informasaun relasiona ho COVID-19
- Alende ne'e, [Pájina Facebook MS](#) nian fornese atualizasaun loloos kona-ba desenvolvimentu COVID-19 iha rai laran
- OMS Timor-Leste liuhusi nia [Pájina Facebook](#) no [Twitter](#) mós disemina informasaun kona-ba medida preventiva, pergunta no resposta, *myth-buster* no atualizasaun ikus kona-ba COVID-19 iha mundu tomak no iha rai laran. Ba media no pedidu ba entrevista bele manda ba [hasane@who.int](mailto:hasane@who.int) ka [wcotimorleste@who.int](mailto:wcotimorleste@who.int)