

WHO South-East Asia Region Epidemiological Bulletin

WHO Health Emergencies Programme
WHO Regional Office for South-East Asia
10th edition (2026), 20 May 2026
Reporting period: 04 to 17 May 2026

HEALTH
EMERGENCIES
programme



World Health Organization
South-East Asia Region



This epidemiological bulletin aims to provide the situation of key infectious diseases in the WHO South-East Asia Region to inform risk assessments and responses. The bulletin uses information from publicly available sources and will be published every two weeks. For feedback or suggestions, please write to seoutbreak@who.int.

Key events and updates	2
Bangladesh: Measles.....	2
New publication: Infection prevention and control guideline for Ebola and Marburg diseases	4
Influenza	5
Situation in the WHO South-East Asia Region	5
COVID-19	7
Situation in the WHO South-East Asia Region	7
mpox	9
Situation in the WHO South-East Asia Region	9
Dengue	11
Situation in the WHO South-East Asia Region	11
Bangladesh	12
India.....	13
Nepal	14
Sri Lanka	14
Thailand.....	15

Key events and updates

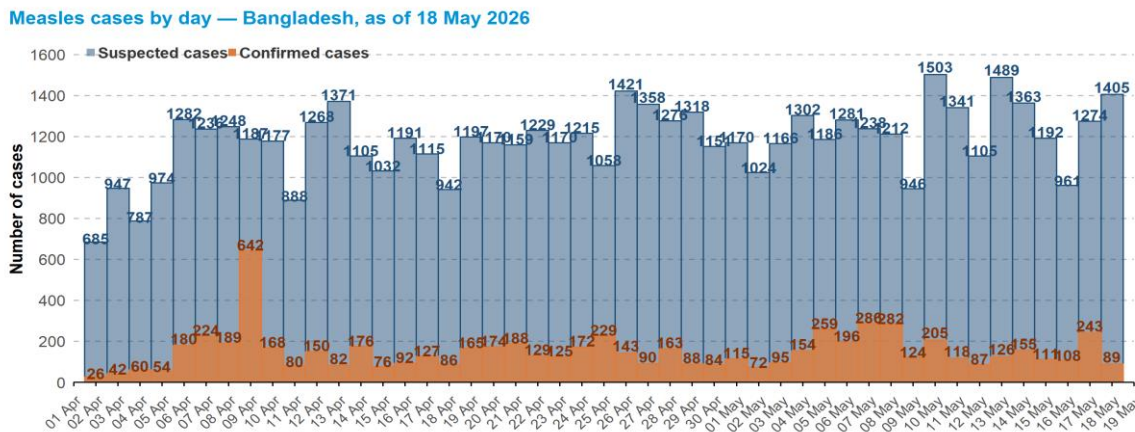
Bangladesh: Measles

Situation overview as of 19 May 2026¹

According to the Ministry of Health and Family Welfare of Bangladesh

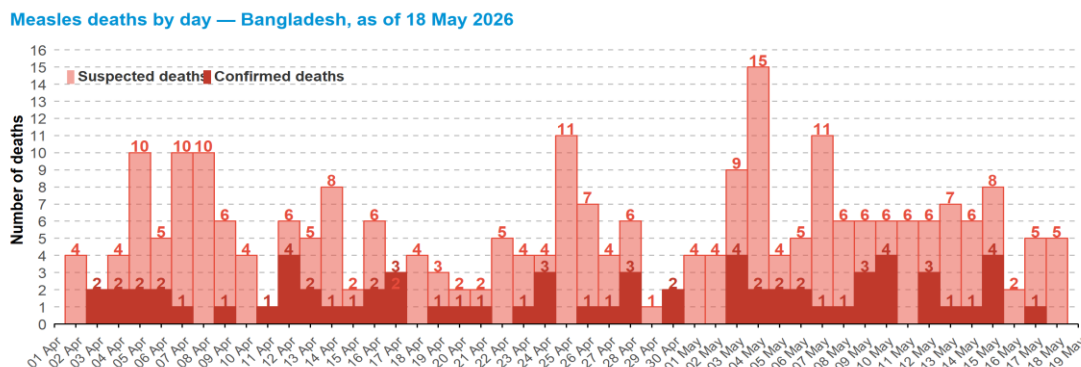
- The outbreak remains active and geographically widespread, with sustained transmission, continued deaths, and substantial hospitalization burden. In ISO week 20, an average of 1 246 suspected cases were reported per day, compared with 1 238 suspected cases per day in ISO week 19.
- Deaths continue to be reported daily, and the cumulative mortality burden continues to rise. In ISO week 20, an average of 5.7 suspected deaths and 1.4 confirmed death were reported per day, compared with 7.6 suspected deaths and 2.1 confirmed deaths per day in ISO week 19.
- Over the past weeks, Dhaka Division has reported the highest cumulative burden of suspected and confirmed cases and deaths, as well as the case incidence.
- Since 15 March 2026:
 - 54 911 suspected measles cases and 7 856 laboratory-confirmed cases have been reported.
 - 389 suspected measles-related deaths (CFR= 0.7%) and 75 confirmed measles-related deaths (CFR= 1.0%) have been recorded.
- Since 5 April 2026, more than 18.2 million children have been vaccinated, equivalent to 101.4% of the overall campaign target population of 18 015 064 children.

Figure 1. Daily number of confirmed and suspected measles cases in Bangladesh, 02 April-18 May 2026



Source: [DGHS, Bangladesh](#)

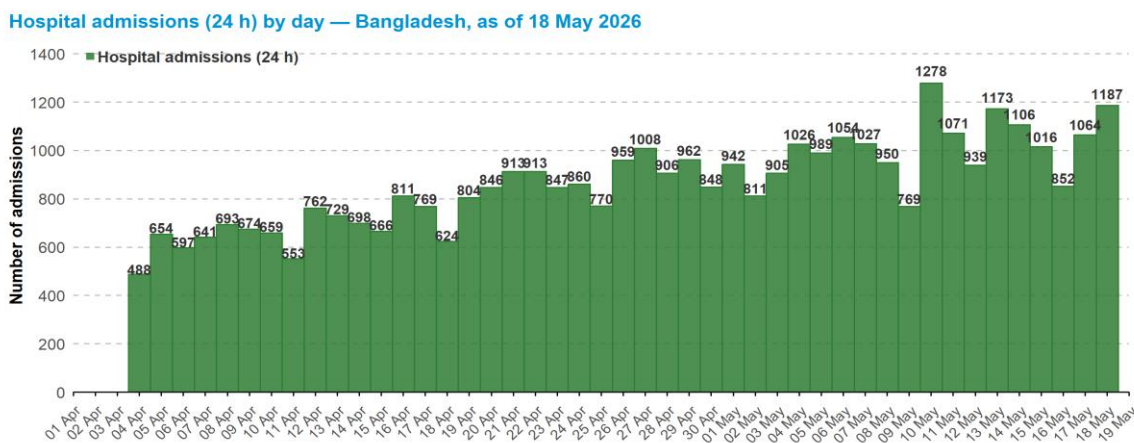
Figure 2. Daily number of confirmed and suspected measles deaths in Bangladesh, 02 April-18 May 2026



Source: [DGHS, Bangladesh](#)

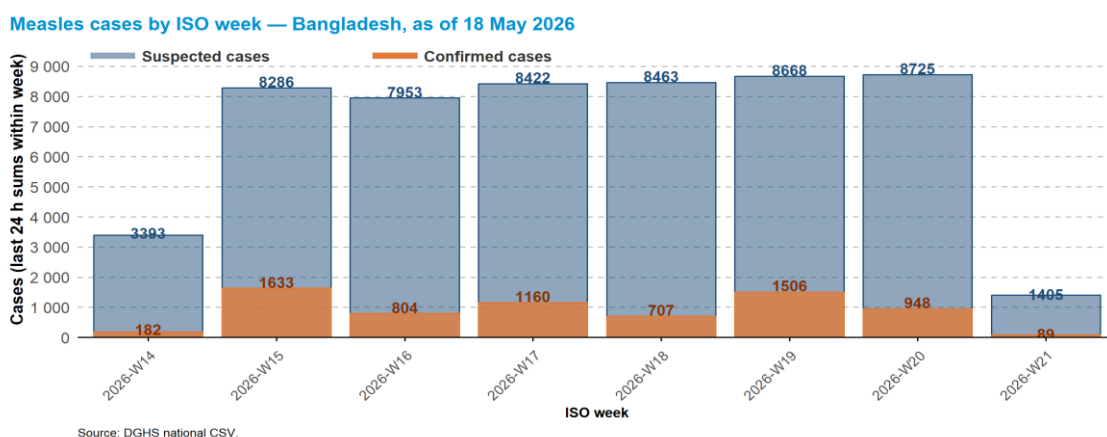
¹ Directorate General of Health Services (Bangladesh). Measles press release (18/05/2026) [Internet] [cited 2026 May 19]. Available from: <https://tinyurl.com/4dbhv83a>

Figure 3. Daily hospital admissions (24 h) of suspected measles cases in Bangladesh, 02 April-18 May 2026



Source: [DGHS, Bangladesh](#)

Figure 4. Weekly number of confirmed and suspected measles cases in Bangladesh (ISO Week)

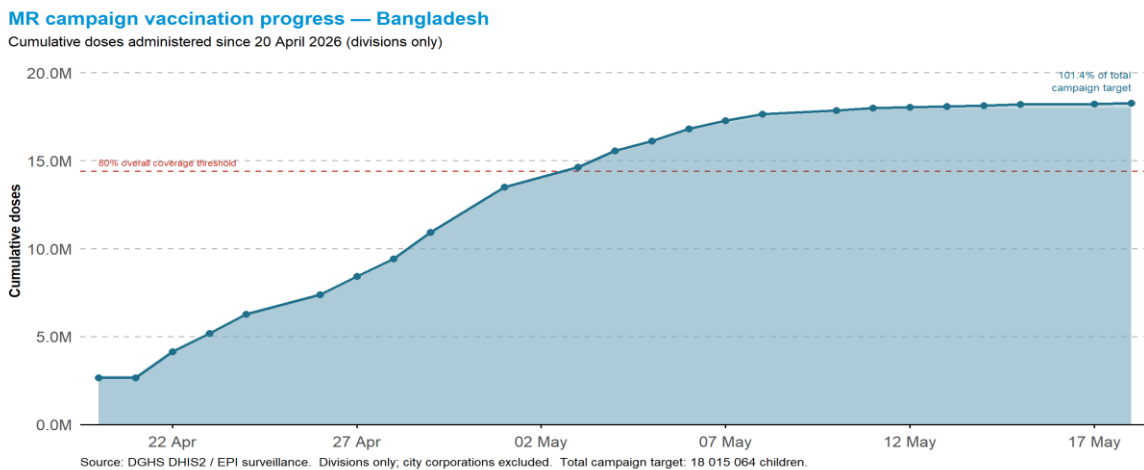


Source: DGHS national CSV.

Note: Data for epidemiological week 21 are provisional, as the week is still ongoing and the figures are not yet complete.

Source: [DGHS, Bangladesh](#)

Figure 5. Measles-Rubella vaccination campaign progress in Bangladesh (As of 18 May)



Source: [DGHS, Bangladesh](#)

New publication: Infection prevention and control guideline for Ebola and Marburg diseases

- This document provides public health advice on multisectoral actions to support the social and economic protection of communities affected by Ebola and Marburg disease outbreaks.
- These outbreaks pose significant health risks and have wide-ranging social and economic consequences, including disruption of services, livelihoods and social cohesion, as well as stigma and discrimination.
- The guidance is informed by operational experience, including the 2025 Ebola outbreak in the Democratic Republic of the Congo, and is aligned with WHO's health emergency preparedness, response and resilience framework.
- The publication outlines approaches to community social protection, emphasizing coordinated multisectoral action to mitigate vulnerability and ensure equitable access to essential services.
- It describes practical steps for identifying vulnerable groups, assessing service disruptions and implementing integrated interventions across sectors such as health, social welfare, education, food security and mental health.
- The guidance highlights the importance of preparedness, community engagement and continuity of support throughout the emergency cycle, including recovery phases. It aims to strengthen outbreak response by addressing broader social determinants, protecting affected populations and enhancing resilience to future health emergencies.
- The full guideline is available at the following link: <https://www.who.int/publications/i/item/9789240111332>



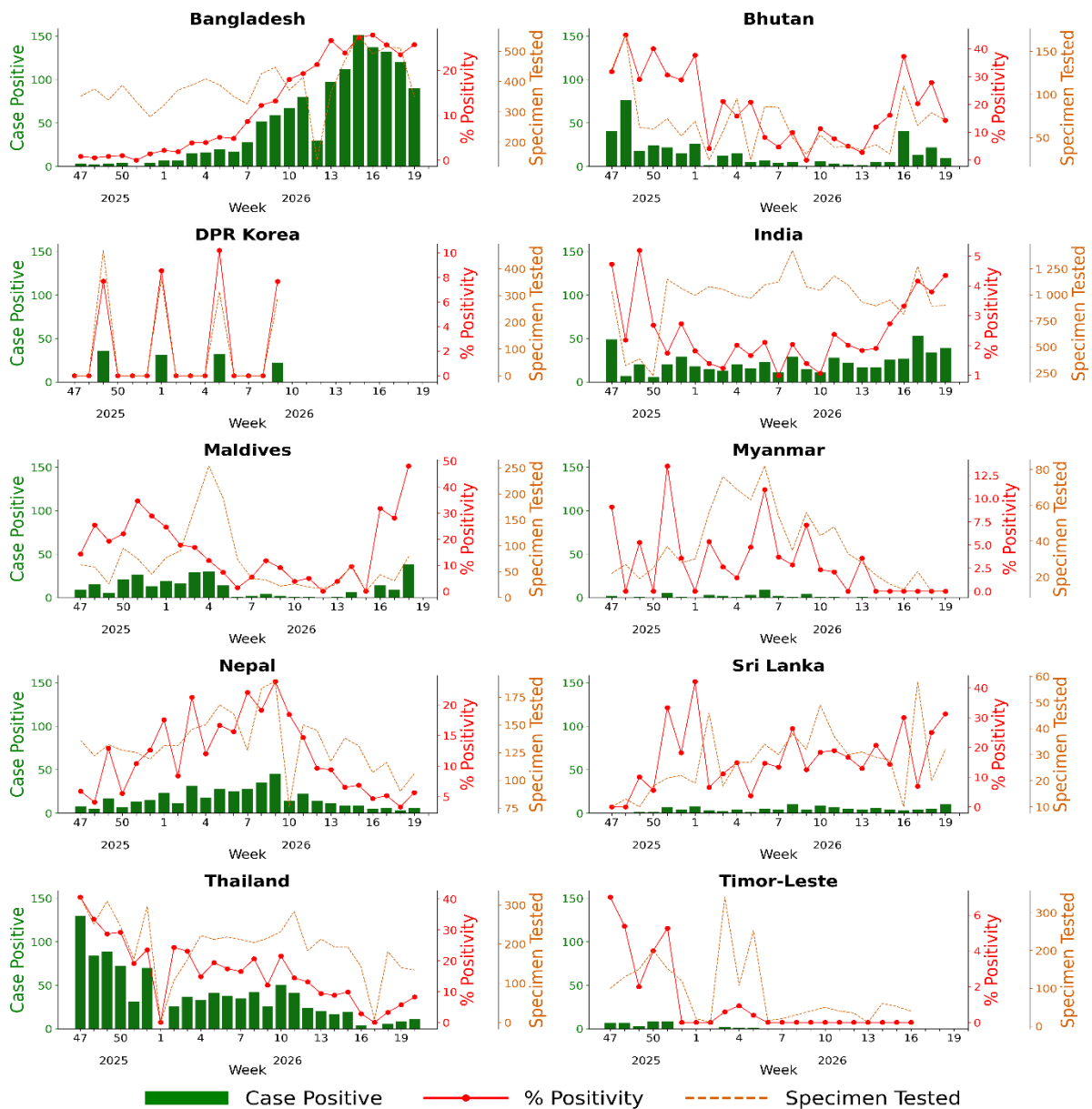
Influenza

Situation in the WHO South-East Asia Region

Situation as of 18 May 2026 ²

- Figure 6 shows the influenza data from the WHO FluNet platform, accessed on 18 May 2026.
- In the WHO South-East Asia Region during weeks 18–20, there were 274 influenza positive samples, among 3 065 samples tested from eight countries. The overall positivity percentage was 9%.
- Maldives, Sri Lanka and Bangladesh reported relatively high percentages of test positivity in the region with 48%, 29%, and 26%, respectively (Table 1).

Figure 6. Weekly trends of specimens tested at National Influenza Centers (NIC), positivity percentage and laboratory confirmed influenza cases in the WHO South-East Asia Region, as of 18 May 2026



Source: RespiMart/FluNet

² World Health Organization. Influenza surveillance outputs [Internet]. 2026 [cited 2026 May 18]. Available from: <https://www.who.int/teams/global-influenza-programme/surveillance-and-monitoring/influenza-surveillance-outputs>

Influenza A subtypes and B lineages reported in the Region from week 18 to 20 in 2026, as of 18 May 2026³

- Table 1 shows distribution of influenza A virus subtypes and B lineages across ten countries in the WHO South-East Asia Region for weeks 18 to 20 of 2026, based on data extracted from WHO's RespiMart platforms on 18 May 2026. The last submission was on 11 May 2026 (Week 20).
 - DPR Korea and Timor-Leste reported no samples tested during this period. Some countries tested samples less than the WHO recommended minimum number (50 samples per week at the national level). The overall positivity percentage for the region was 9%. The positivity percentages in Maldives, Sri Lanka, Bangladesh and Bhutan were 48%, 29%, 26% and 22% respectively.
 - At the regional level the distribution of influenza A and B among tested samples were 79% and 21%.
- The predominant Influenza A subtype detected in the region was A (H3), accounting for 46% of all influenza-positive samples. Influenza A(H1N1)pdm09 accounted for 32%.
 - Among countries that reported influenza test positive results (10 or more positive samples), A(H3) was the predominant strain in Bangladesh (100%) and Maldives (100%).
 - The sub-type A(H1N1)pdm09 predominated in Bhutan (100%) and India (63%).
 - In Sri Lanka, 13% of positive samples were influenza A not-subtyped.
- Among the samples positive for Influenza B in the region, B(Victoria) lineage accounted for 18% of detected viruses in the region.
 - Among countries that reported influenza test positive results (10 or more positive samples), B lineage predominated in Sri Lanka (73%) and Thailand (60%).
 - In Sri Lanka, the proportion of influenza B (Lineage not Determined) reported was 33%.

Table 1. Distribution of influenza A virus subtypes and B virus lineages in the WHO South-East Asia Region* (weeks 18 to 20, 2026), situation as of 18 May 2026

Country	Total Samples Tested	Number of Influenza Positive	Positivity Rate %	A (H1) %	A (H3) %	A (H5) %	A (H1N1)pdm09 %	A (Unsubtype) %	B (Yamagata) %	B (Victoria) %	B (Lineage not Determined) %
All Countries	3 065	274	9%	0%	46%	0%	32%	1%	0%	18%	3%
Bangladesh	318	82	26%	0%	100%	0%	0%	0%	0%	0%	0%
Bhutan	149	32	22%	0%	0%	0%	100%	0%	0%	0%	0%
DPR Korea	0	0	0%	0%	0%	0%	0%	0%	0%	0%	0%
India	1 792	73	4%	0%	3%	0%	63%	0%	0%	34%	0%
Maldives	79	38	48%	0%	100%	0%	0%	0%	0%	0%	0%
Myanmar	24	0	0%	0%	0%	0%	0%	0%	0%	0%	0%
Nepal	196	9	5%	0%	0%	0%	22%	22%	0%	22%	33%
Sri Lanka	52	15	29%	0%	7%	0%	7%	13%	0%	40%	33%
Thailand	455	25	6%	0%	16%	0%	24%	0%	0%	60%	0%
Timor-Leste	0	0	0%	0%	0%	0%	0%	0%	0%	0%	0%

Notes: * Positivity proportion that less than 0.5 % are shown as 0%.

³ World Health Organization. Influenza surveillance outputs [Internet]. 2026 [cited 2026 May 18]. Available from: <https://www.who.int/teams/global-influenza-programme/surveillance-and-monitoring/influenza-surveillance-outputs>

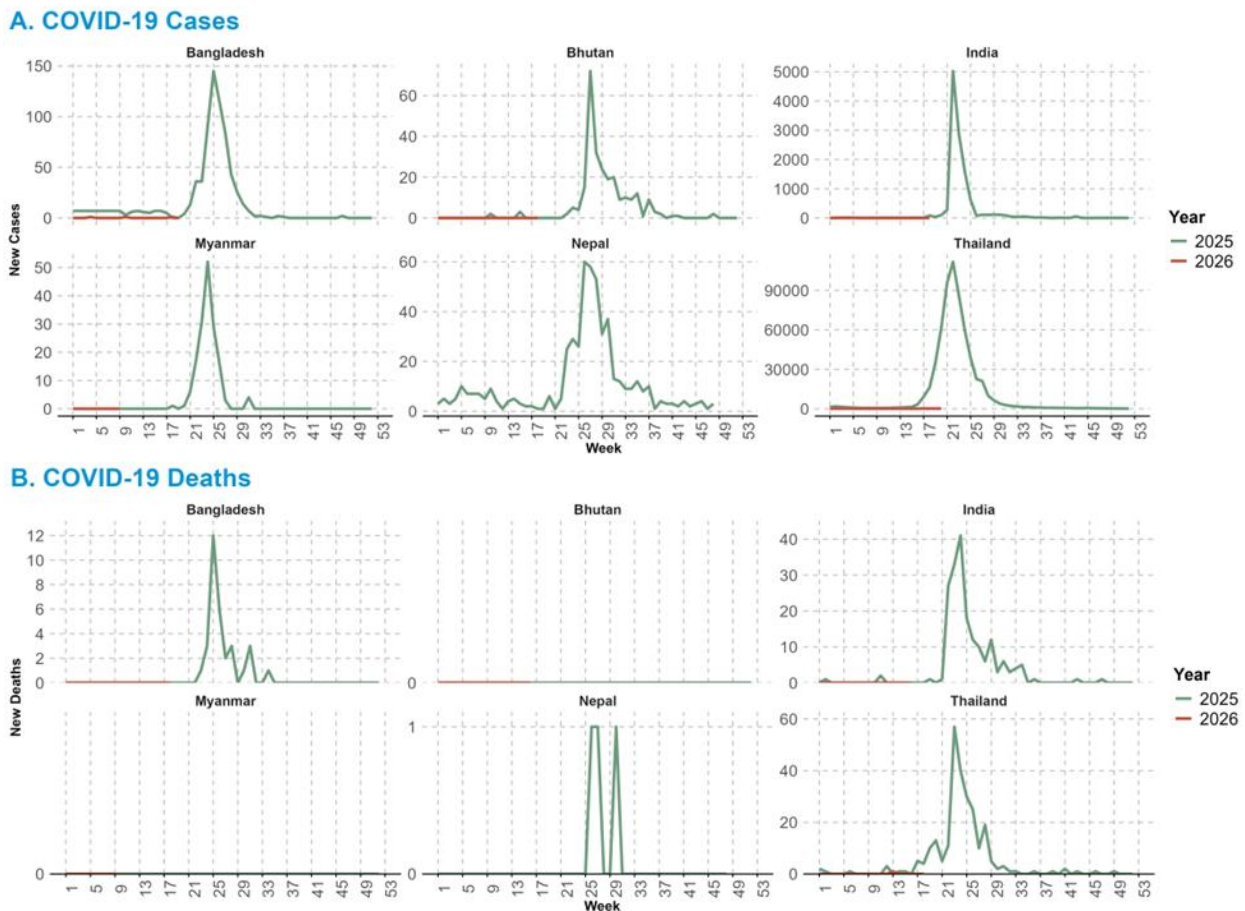
COVID-19

Situation in the WHO South-East Asia Region

Situation as of 17 May 2026

- The weekly number of COVID-19 cases reported on official websites, including Bangladesh⁴, Bhutan⁵, India⁶, Myanmar⁷, Nepal⁸ and Thailand⁹, are presented in Figure 7**.
- Data of the most recent week (week 20) are available from Thailand.
- Please visit the [WHO COVID-19 dashboard](#) for the global situation of COVID-19.

Figure 7. Weekly comparisons of new COVID-19 cases (A) and deaths (B) reported from selected countries since week one of 2025 to week 20 in 2026 in the WHO South-East Asia Region*



* Nepal data as of week 49 of 2025. India data as of week 6, Myanmar data as of week 9 and Bangladesh and Bhutan data as of week 18.

** Bangladesh, Bhutan, India and Myanmar data as of ISO Week. Nepal and Thailand data as of Epidemiological week.

⁴ Directorate General of Health Services (DGHS), Bangladesh. COVID-19 Dashboard [Internet]. 2026 [cited 2026 May 19]. Available from: <https://old.dghs.gov.bd/index.php/bd/component/content/article?layout=edit&id=5612>

⁵ Bhutan, Royal Centre for Disease Control. [Internet]. [cited 2026 May 19]. Available from: <https://www.rcdc.gov.bt/web/>

⁶ Ministry of Health and Family Welfare, Government of India. COVID-19 India Dashboard [Internet]. [cited 2026 May 19]. Available from: <https://covid19dashboard.mohfw.gov.in/>

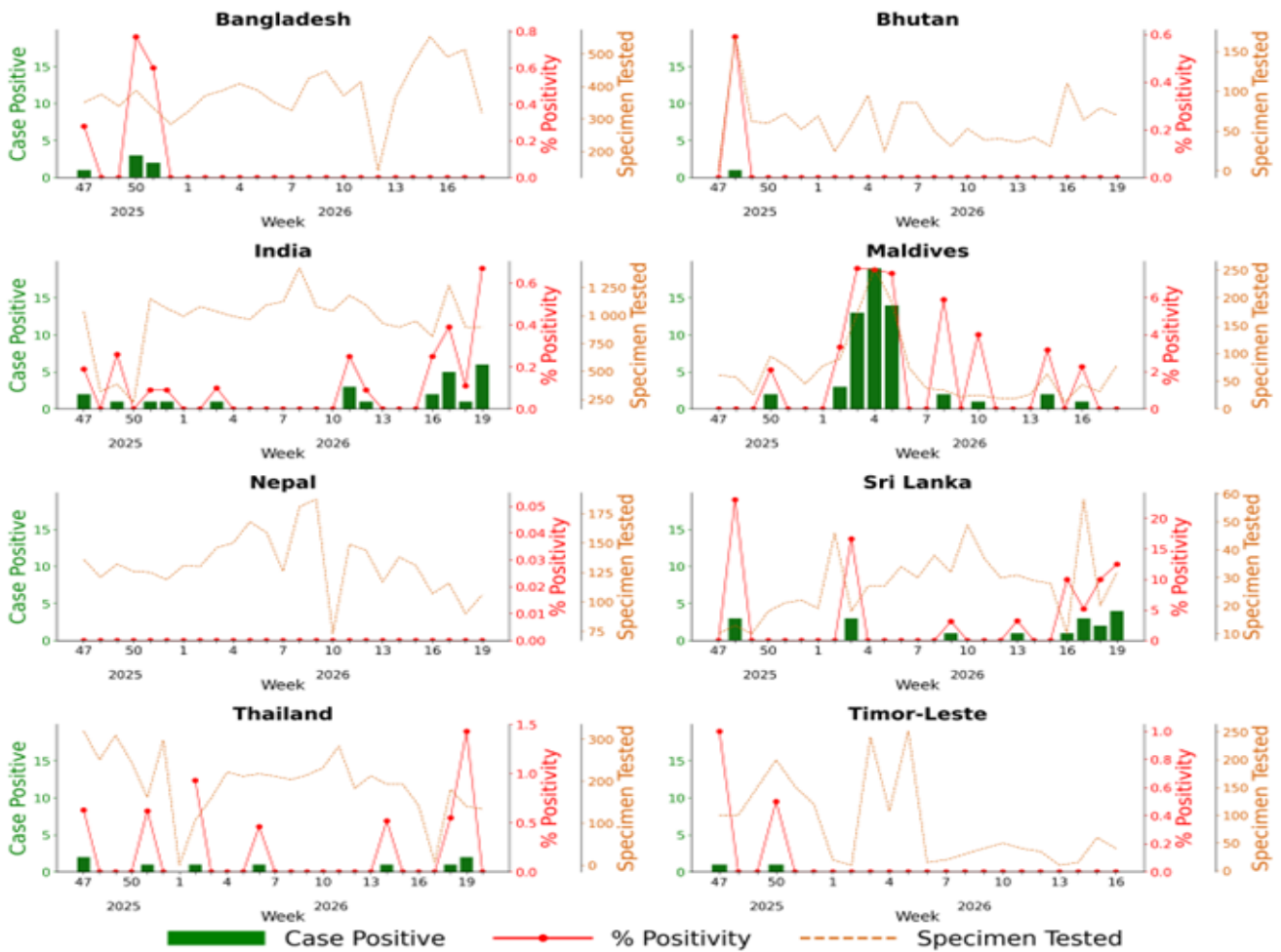
⁷ Ministry of Health, Republic of the Union of Myanmar. Ministry of Health official website [Internet]. 2026 [cited 2026 May 19]. Available from: <https://www.mohs.gov.mm/>

⁸ Epidemiology and Disease Control Division Nepal. [Internet]. [cited 2026 May 19]. Available from: <https://edcd.gov.np/newsroom/outbreak>

⁹ Department of Disease Control, Ministry of Public Health, Thailand. COVID-19 Surveillance Dashboard [Internet]. 2026 [cited 2026 May 19]. Available from: <https://www.facebook.com/photo/?fbid=1176170881210400&set=a.309744487853048>

- Based on data from the integrated influenza-SARS-CoV-2 sentinel surveillance system, Figure 8 summarizes weekly trends of COVID-19 cases in the eight countries—Bangladesh, Bhutan, India, Maldives, Nepal, Sri Lanka, Thailand and Timor-Leste - including the number of positive COVID-19 cases, the percentage positivity and the number of specimens tested.¹⁰

Figure 8. The number of COVID-19 positive case, % positivity and specimen tested from integrated influenza-SARS CoV-2 sentinel surveillance systems (as of 18 May 2026)



Source: Integrated Influenza and Other Respiratory Viruses Surveillance Output Dashboard

¹⁰ Integrated Influenza and Other Respiratory Viruses Surveillance Output Dashboard. [Internet]. [cited 2026 May 18].

Available from:

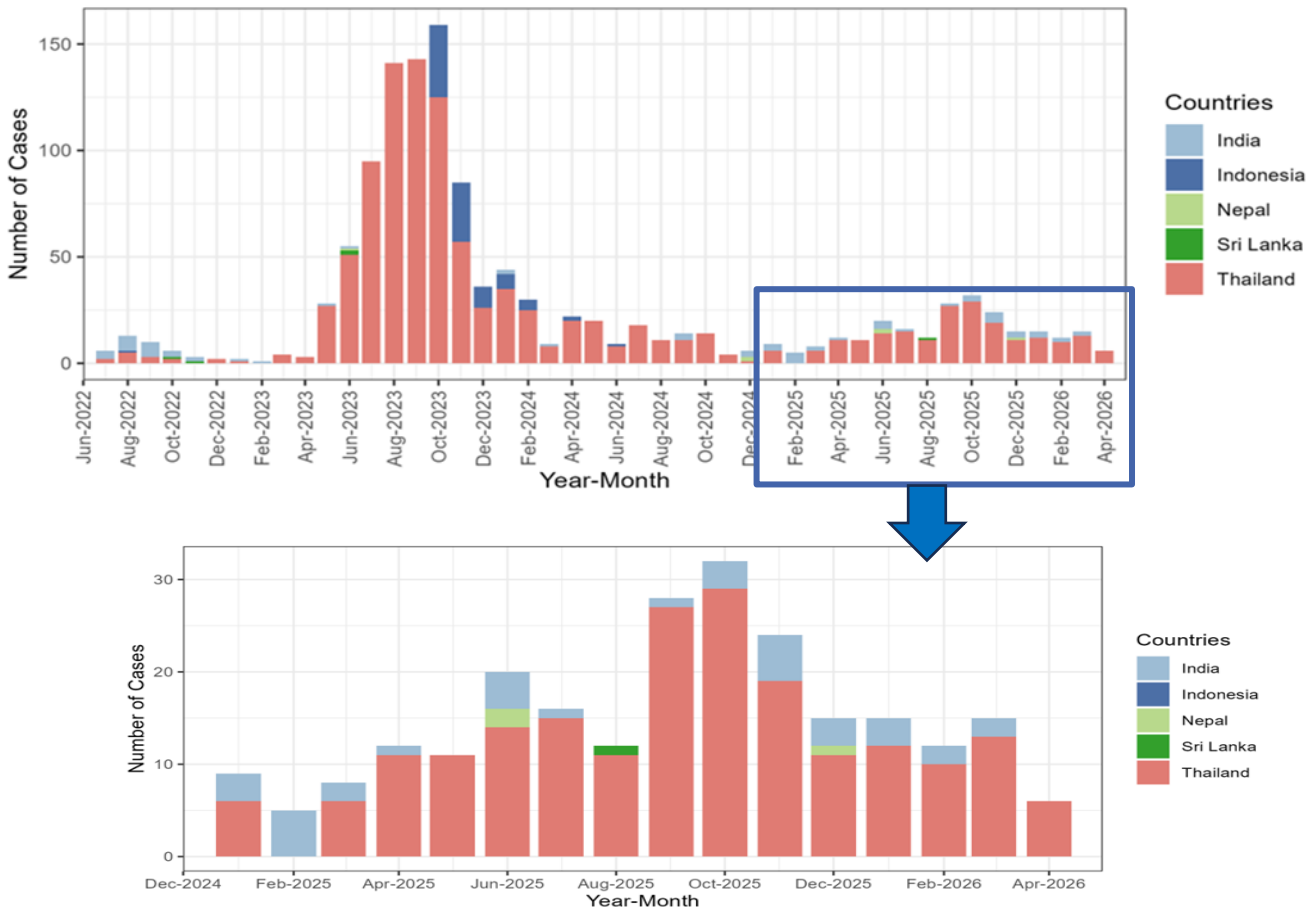
<https://app.powerbi.com/view?r=eyJrIjoiNzdiZTVmY2YtNzY2NC00NTM0LTkzY2QtMWM0MzY0Mjg0YTZiIiwidCI6ImY2MTBjMGI3LWJkMjQ0NGl3OS04MTBiLTNkYzI4MGFmYjU5MCIslmMiOjh9>

Situation in the WHO South-East Asia Region

Situation as of 17 May 2026

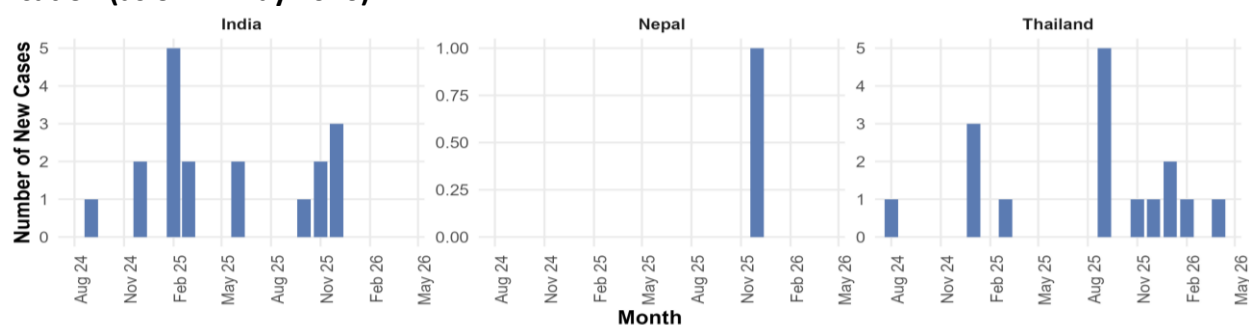
- In week 19 and 20 (04 to 17 May 2026), no new mpox cases were reported in the region.
- As of 17 May 2026, in the WHO South-East Asia Region, a total of 1 233 laboratory-confirmed mpox cases, including 16 deaths, have been reported since 14 July 2022.
- One Clade Ib case has been reported from Thailand in April 2026 with travel history from Qatar.
- One death of Clade II (HIV Positive) case was also reported from Thailand.
- Thirty-five mpox virus (MPXV) clade Ib cases have been reported in the Region to date – 18 from India, 16 from Thailand and one from Nepal. Please see Figure 9 for the trend of MPXV Ib cases detected in the Region and Table 2 for the profile of the cases.
- For information on global epidemiological situation of mpox, please see: [WHO mpox surveillance dashboard](#)

Figure 9. Number of mpox cases reported in WHO South-East Asia Region by date of notification* (Upper, 14 July 2022 – 17 May 2026; lower 1 January 2025 – 17 May 2026).



Notes:
 * Cases are plotted per month of notification - the date on which the case is notified to the public health authority.
 ** Where the date of notification is missing, this has been replaced with the date of diagnosis. Following the reassignment of Indonesia from the WHO South-East Asia Region to the WHO Western Pacific Region, data of Indonesia after 27 May 2025 will no longer be reflected in the graph.

Figure 10. Number of MPXV clade Ib cases reported in WHO South-East Asia Region by month of notification (as of 17 May 2026)*



* Cases are plotted as per the month of notification (based on the date on which the case was notified to the public health authority). For cases in India of which the month of notification is missing, the month of diagnosis was used.

Table 2. Profile of the 35 confirmed MPXV clade Ib cases reported in the WHO South-East Asia Region, for which case-based information is available since August 2024 (as of 17 May 2026)*

	Category	Total (n = 35)
Country	India	18 (51.4%)
	Nepal	1 (2.9%)
	Thailand	16 (45.7%)
Recent international travel	Yes	31 (88.6%)
	No	4 (11.4%)
Age group (years)	18-29	11 (31.4%)
	30-39	15 (42.9%)
	40-49	8 (22.9%)
	50 and over	1 (2.9%)
Gender	Male	22 (62.9%)
	Female	13 (37.1%)

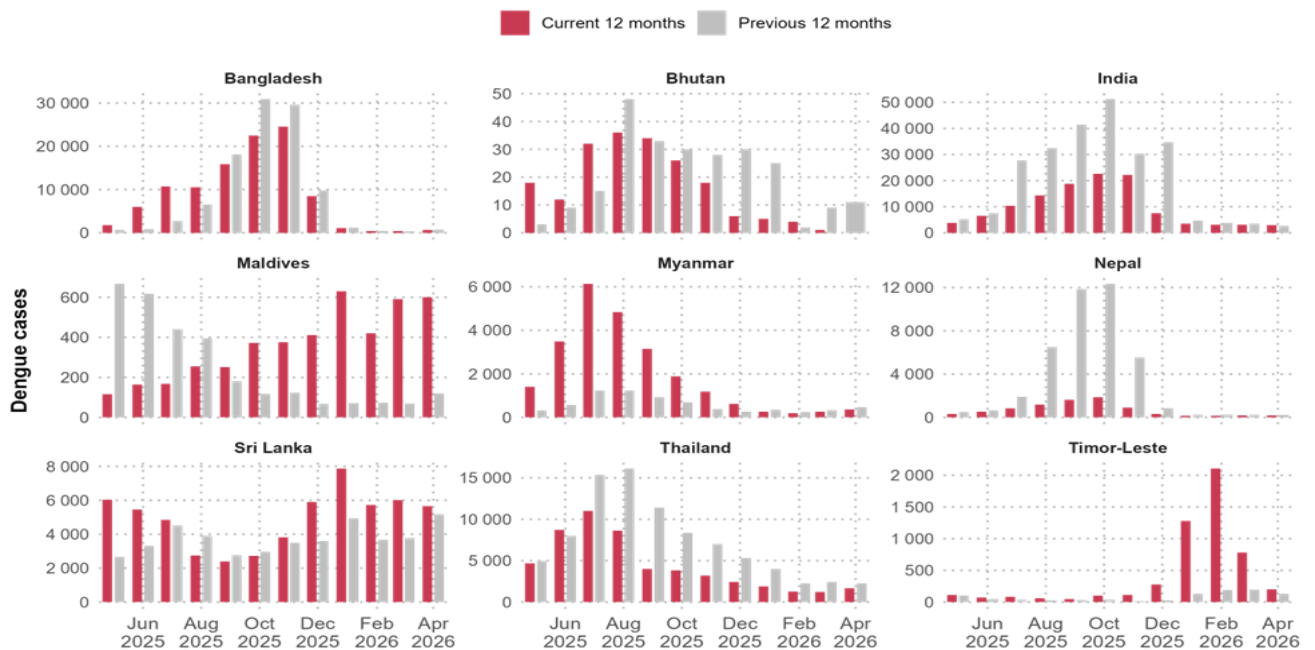
Notes: * One CRF is awaited from Nepal.

Dengue

Situation in the WHO South-East Asia Region ¹¹

- In April 2026, Sri Lanka reported 5 662 cases, India reported 2 918 cases, and Thailand reported 1 661 cases (Figure 11). Data of April was not available yet for Bhutan.
- While Timor-Leste recorded 203 cases in April 2026, 74% decrease compared to March 2026 (780 cases), and 55% higher than April 2025 (131 cases).
- Maldives is experiencing a surge, with 601 cases in April 2026, 2% higher than March 2026 (591 cases), and 5 times higher than April 2025 (120 cases).

Figure 11. Monthly reported dengue cases by country, May 2025 – April 2026



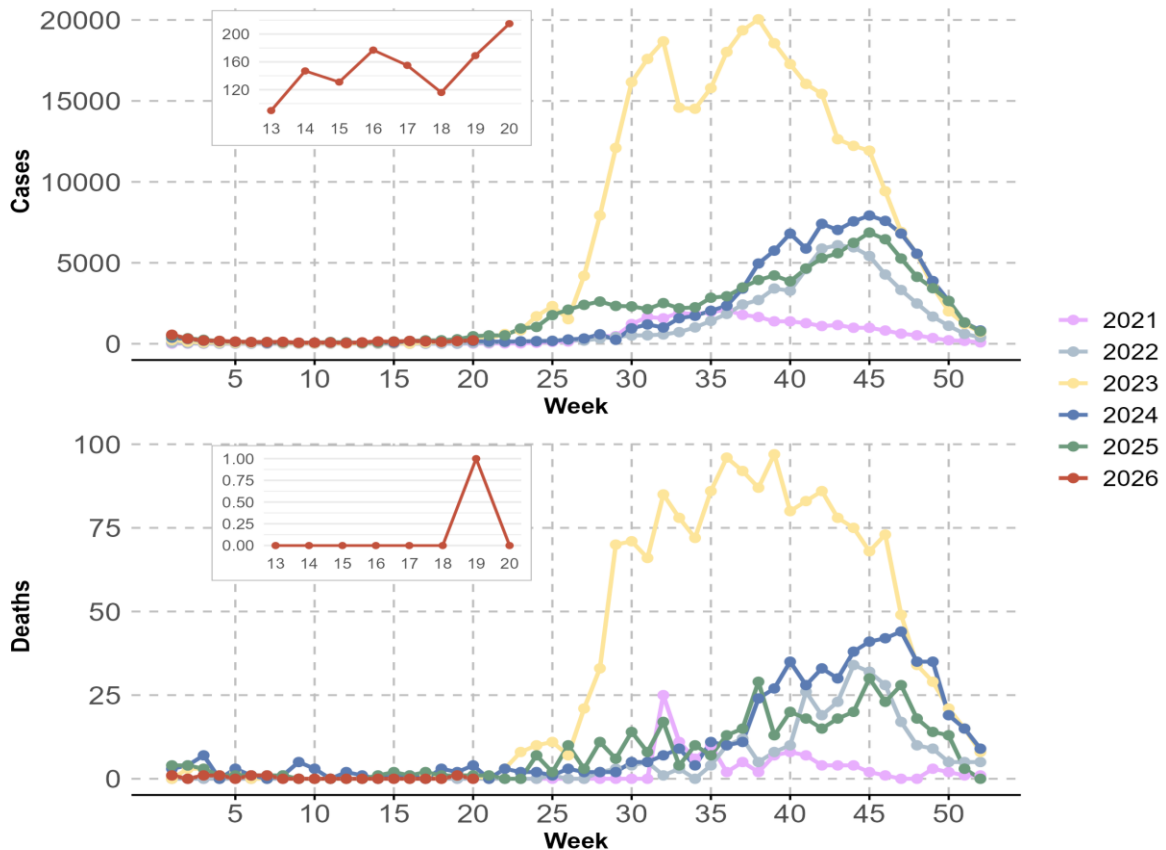
Notes:

Bangladesh, Bhutan, Indonesia, Myanmar, Thailand and Timor-Leste show confirmed cases. Bangladesh reports only hospitalized cases. The majority of Myanmar cases are hospitalized cases.

¹¹ World Health Organization. Global dengue surveillance [Internet]. Available from: https://worldhealthorg.shinyapps.io/dengue_global/

- In Bangladesh, during Week 20 of 2026, a total of 215 suspected dengue cases were reported, representing a 27% increase compared with the 169 cases reported in Week 19. Compared with the same week in 2025, when 466 cases were reported, the Week 20 caseload in 2026 was 54% lower.
- During week 20, no new dengue deaths were reported in Bangladesh which compares to one death reported in week 19.

Figure 12. Number of new dengue cases and deaths by week in Bangladesh from week 1 of 2021 to week 20 of 2026.



¹² Directorate General of Health Services (DGHS), Bangladesh. Daily Dengue Status Report [Internet]. 2026. Available from: <https://old.dghs.gov.bd/index.php/bd/home/5200-daily-dengue-status-report>

- During April 2026, a total of 2 918 cases of dengue were reported in India, a 5% decrease compared to March 2026 (n = 3 085).
- In 2026, as of April 2026, a total of 12 566 cases of dengue have been reported compared to 14 723 cases during the same period in 2025.

Figure 13. Number of new cases of dengue by month in India from January 2024 to April 2026

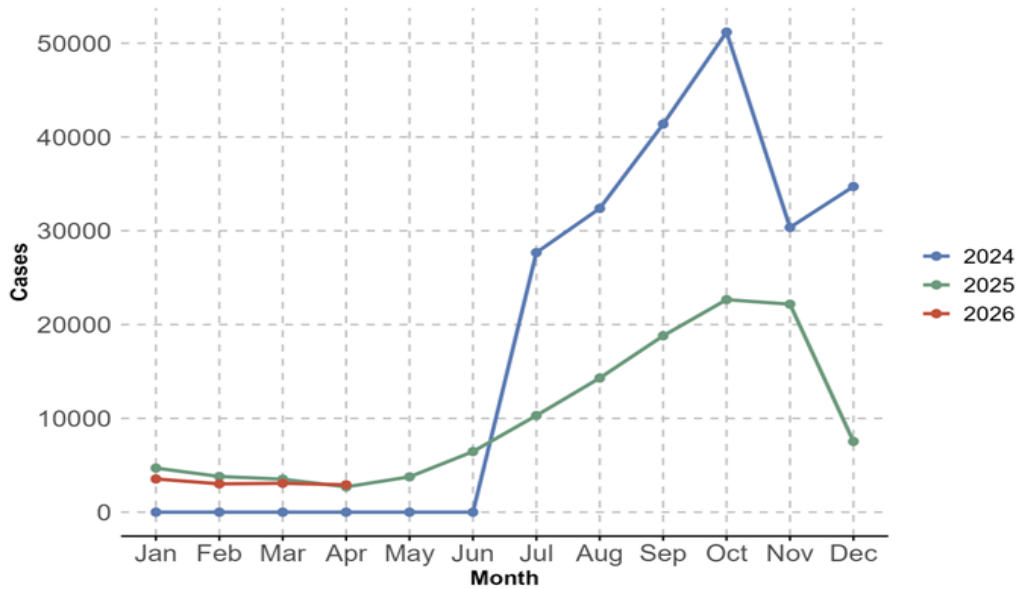
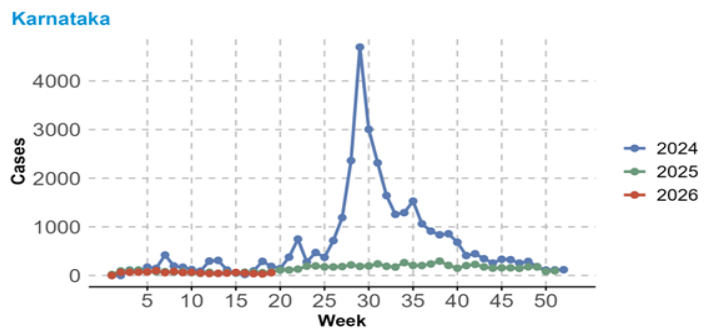


Figure 16. Weekly number of new dengue cases in Karnataka and Kerala states from week 1 of 2024 to week 19 of 2026

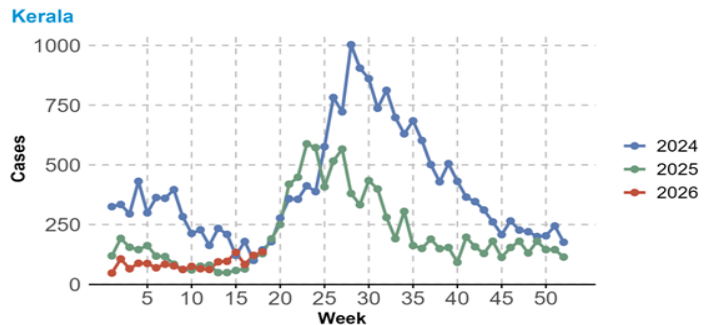
Karnataka¹³

- In Karnataka, during week 19, a total of 56 cases were reported, representing a 81% increase compared to 31 cases reported in week 18.



Kerala¹⁴

- In 2025, cases increased steadily from week 17, but case numbers have declined since week 27. In 2026, the trend remained consistently low since the start of the year.



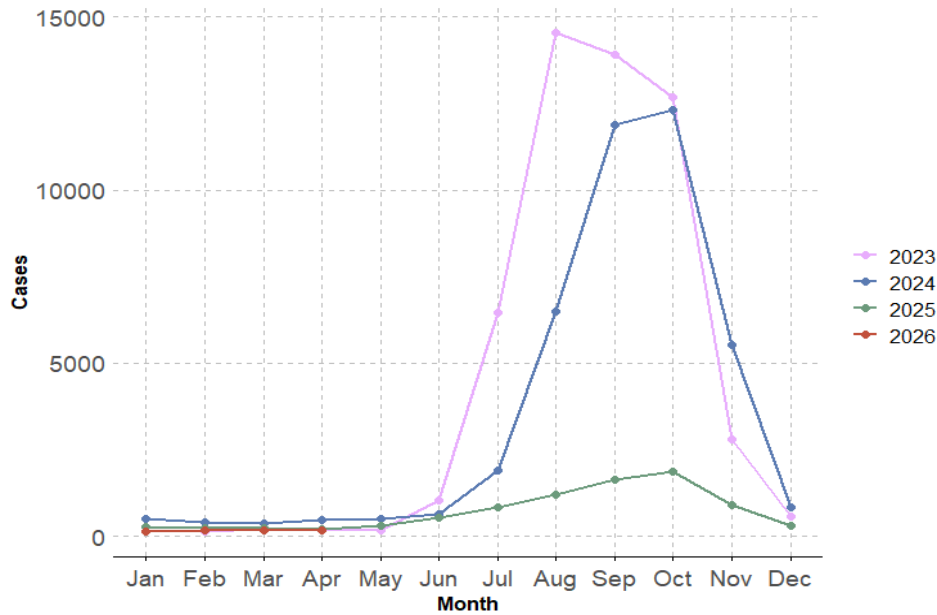
¹³ Department of Health and Family Welfare, Government of Karnataka. PRISM H Disease Surveillance Dashboard [Internet]. 2026. Available from: <https://hfwcom.karnataka.gov.in/info-4/Weekly%20Infectious%20Disease%20Report/en>

¹⁴ Department of Health and Family Welfare, Government of Kerala. Health Dashboard – Integrated Disease Surveillance Programme (IDSP) [Internet]. 2026. Available from: <https://dashboard.kerala.gov.in/>

Nepal

- In April 2026, a total of 188 dengue cases were reported in Nepal, a 5.6% increase compared to March 2026 (n = 178).

Figure 14. Number of new cases of dengue by month in Nepal from January 2023 to April 2026

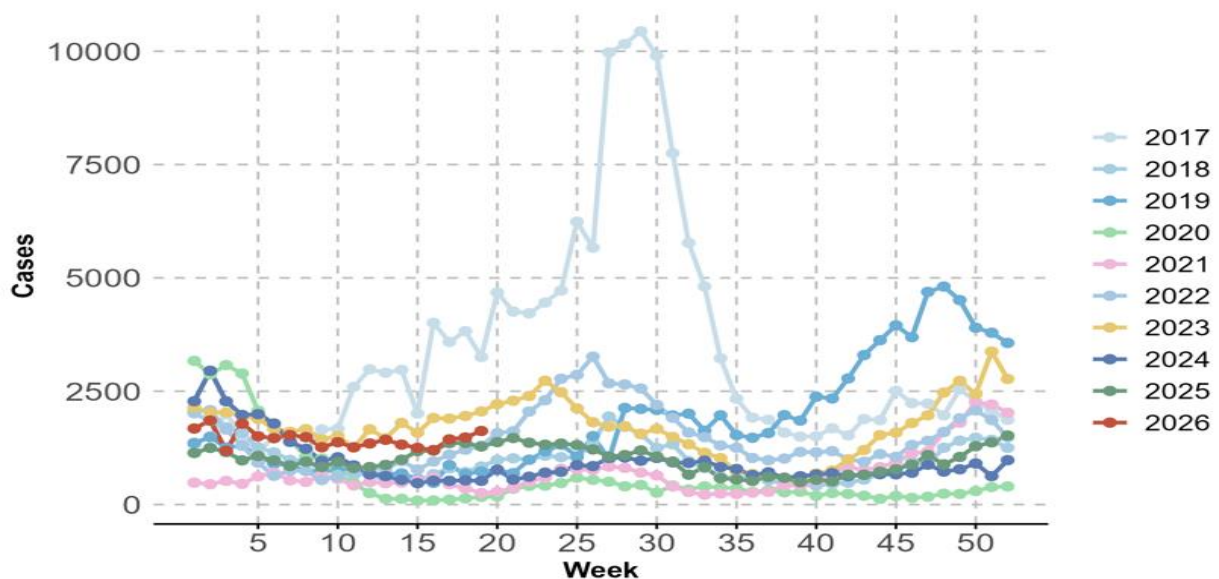


Source: [WHO Global dengue surveillance](#)

Sri Lanka¹⁵

- In Sri Lanka, during Week 19 of 2026, a total of 1 623 suspected dengue cases were reported, representing a 10% increase compared with the 1 479 cases reported in Week 18. Compared with the same week in 2025, when 1 281 cases were reported, the Week 19 caseload in 2026 was 27% higher.
- The Western Province accounted for 48.9% of total cases, with the Colombo Municipal Council (CMC) contributing 3.5%, the rest of Colombo District 19.9%.

Figure 15. Number of new dengue cases by week in Sri Lanka from week 1 of 2017 to week 19 of 2026

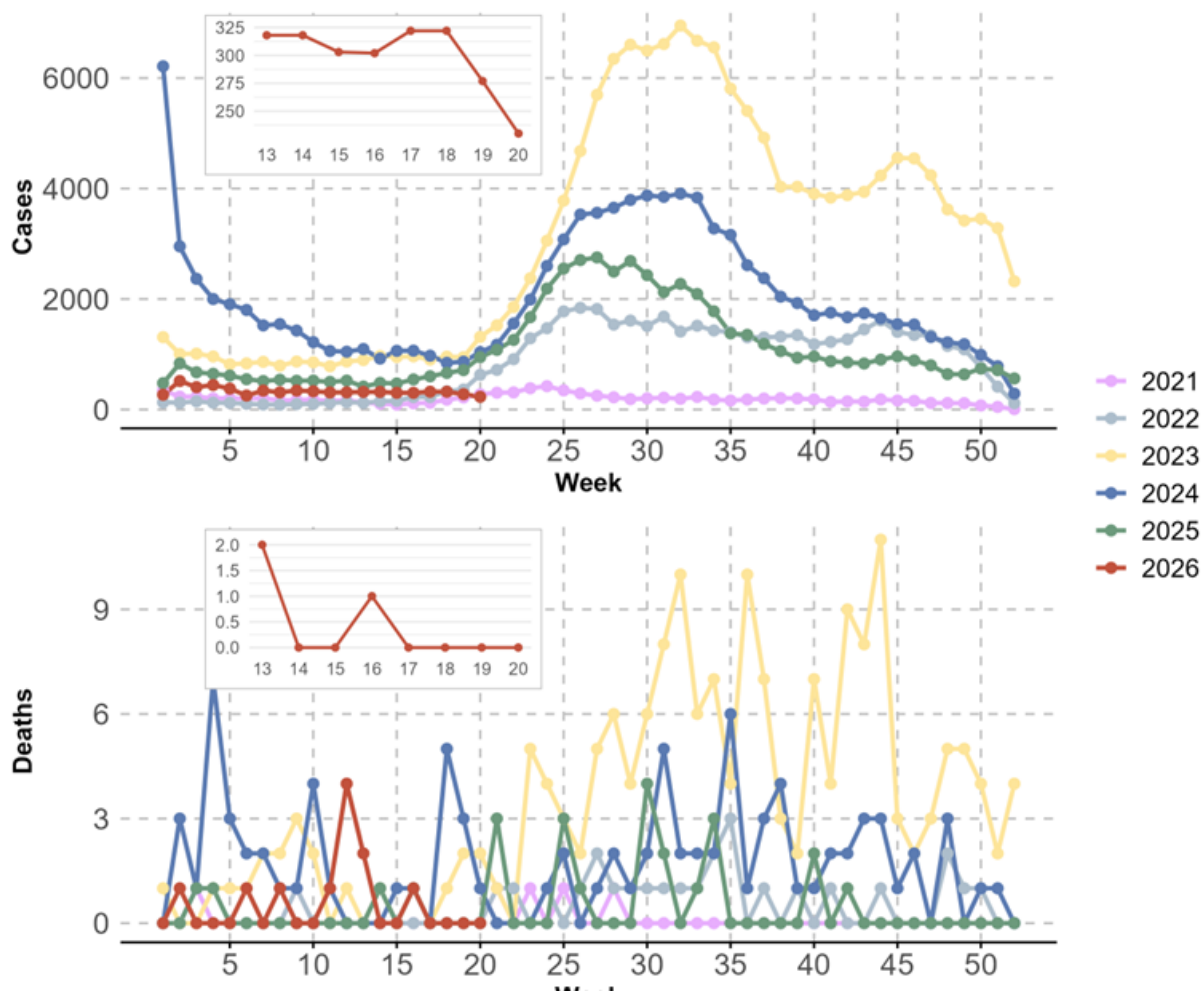


¹⁵ National Dengue Control Unit (NDCU), Ministry of Health, Sri Lanka. National Dengue Control Unit [Internet]. 2026 [cited 2026 May 18]. Available from: <https://www.dengue.health.gov.lk/web/index.php/en/>; Sri Lanka weekly Dengue update.

Thailand

- In Thailand, during Week 20 of 2026, a total of 230 suspected dengue cases were reported, representing a 17% decrease compared with the 277 cases reported in Week 19. Compared with the same week in 2025, when 948 cases were reported, the Week 20 caseload in 2026 was 76% lower.

Figure 16. Number of new cases of dengue by week in Thailand, from week one of 2021 to week 20 of 2026.



Source: [WHO Global dengue surveillance](#)