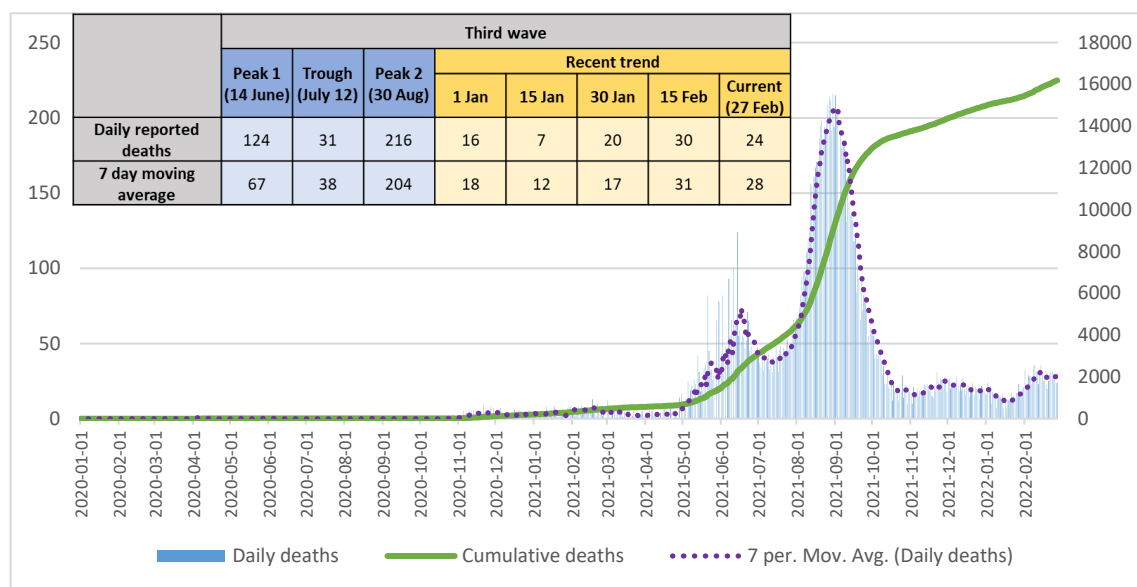




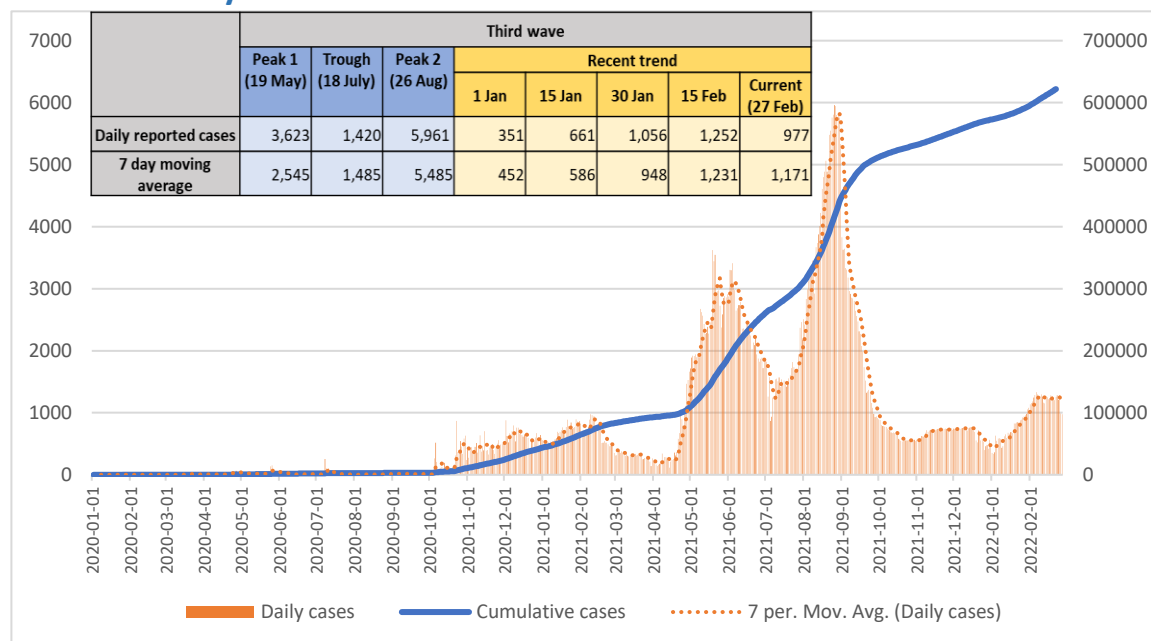
COVID -19 Situation Report

1. Daily deaths and cumulative deaths



- A total of 16,190 deaths have been reported as of 27 Feb with 56% males. 76% of the deaths are in age group of 60+, while 22% is in the 30-60 years age group.
- The number of deaths reported over the past 14 days (14 – 27 Feb) is 382 which is a 1.5% decrease compared to the previous 14-day period (31 Jan – 13 Feb)

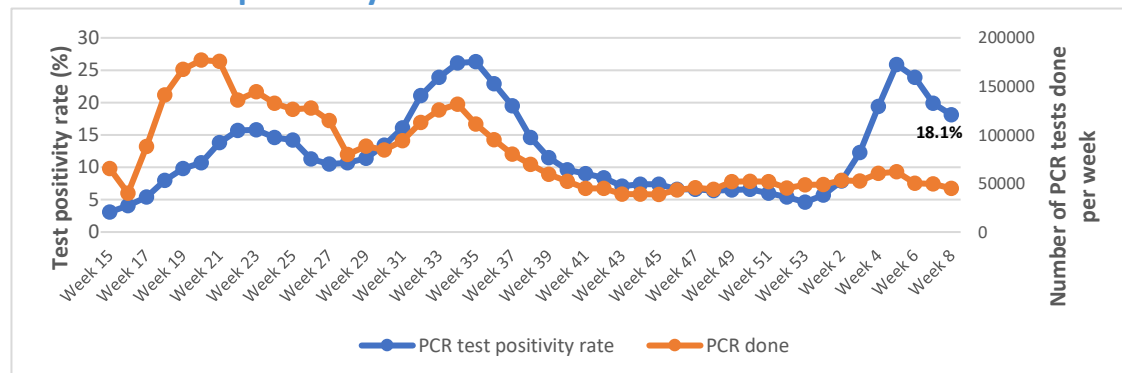
2. Daily cases and cumulative cases



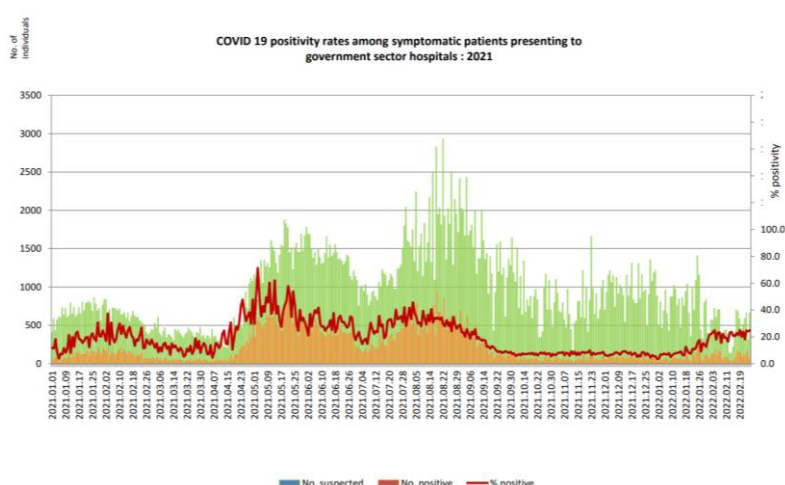
- A total of 645,037 cases have been reported as of 27 Feb
- The number of cases reported over the past 14 days (14 – 27 Feb) is 16,921 which is a 1% decrease compared to the previous 14-day period (31 Jan – 13 Feb)



3. Test positivity rate

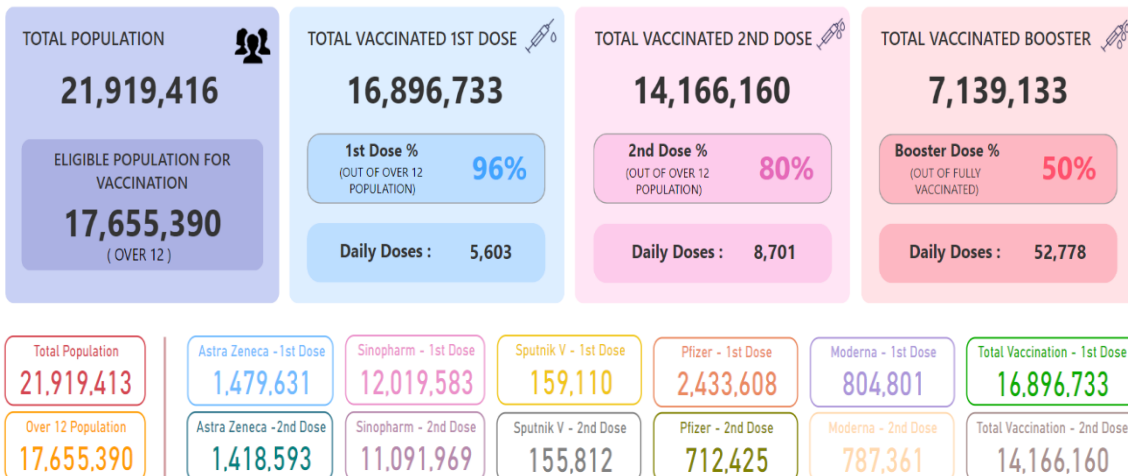


Source: Weekly PCR test positivity rate - National COVID-19 Surveillance System of Sri Lanka. Data updated until 27 February 2022



Source: Epidemiology Unit, Ministry of Health. Data updated until 27 February 2022

4. Vaccination



Source: <https://www.presidentsoffice.gov.lk/index.php/vaccination-dashboard/>. Accessed on 28 February 2022

Weekly PCR test positivity rate has decreased since week 5 of 2022 and is currently 18.1%. Around 45,000 PCR tests were conducted during the week. Further, Rapid Antigen Tests are also widely used for testing.

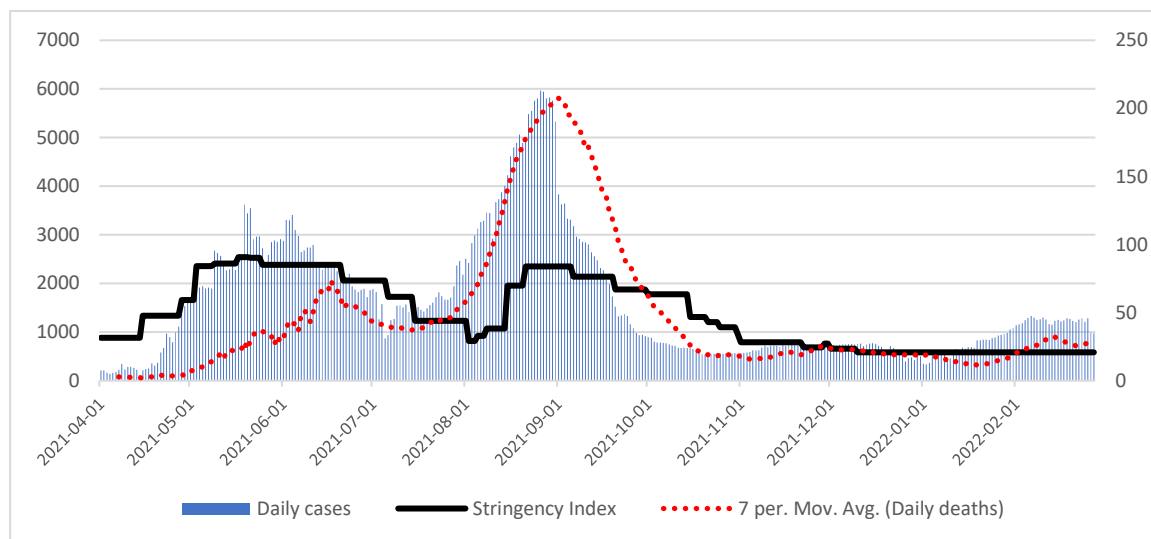
Patients who are having symptoms presenting to government hospitals are tested using RAT and PCR. The positivity rate as of 27 Feb is above 20%.

The accelerated vaccination effort has now covered 80% of the over 12 years age group with two doses and this corresponds to 64% of the total population

A third dose (with Pfizer vaccine) has been administered to 7.1 million persons (32% of the total population and 50% of fully vaccinated). The number of third doses administered over the past 14 days (14 -27 Feb) is 984,357 million which is a 13% increase compared to the previous 14-day period (31 Jan – 13 Feb).



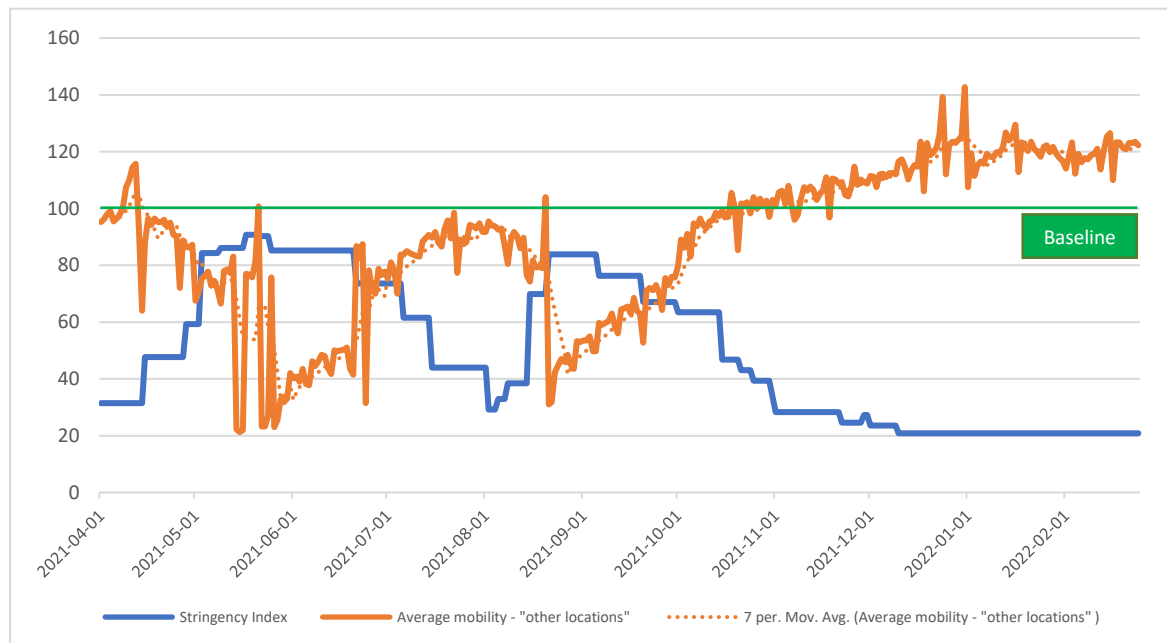
5. Stringency index



Source: Oxford Stringency Index (SI) values are considered. Data until 21 June accessed from Oxford COVID Government Response Tracker; same methodology used for calculations of SI from 21 June onwards. Data updated until 27 February 2022.

- The level of stringency continues to be low.
- Schools are currently open but students are on vacation due to the ongoing advanced level examinations. Day care centers and pre-schools are also open. Workplaces have been given permission to function as usual adhering to the COVID-19 precautionary measures.
- Fully vaccinated travelers arriving in Sri Lanka are exempted from pre-departure COVID-19 testing from 1 March

6. Mobility



Source: Google Community Mobility data are considered. Data available until 24 February 2022

- The average mobility has been **above the baseline*** since mid-November 2021 and is currently at 122% (24 Feb).

*A baseline day represents a normal value for that day of the week calculated based on the median value from the 5-week period Jan 3 – Feb 6, 2020.



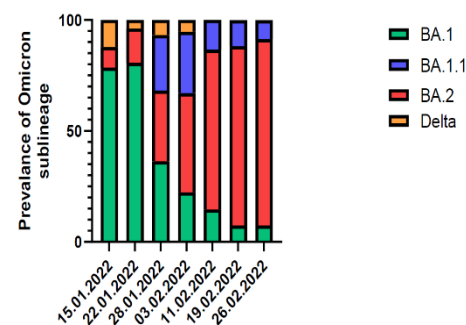
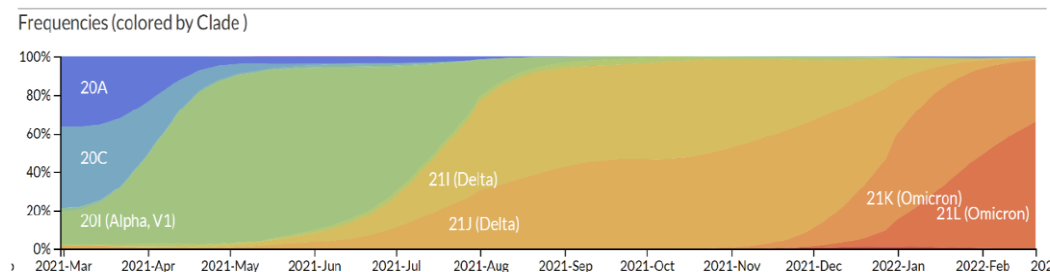
7. Regional situation *(Updated as of 24 February 2022)*

Country		New cases (last 7 days)	% change in new cases	New cases per 1M pop	New deaths (last 7 days)	% change in new deaths	New deaths per 1M pop	Test Positivity Rate (last 7DMA)	% change in TPR
Indonesia		388,086	20.8	1424.8	1,343	82.5	4.3	17.6	9.7
India		158,986	-55.0	138.4	2,986	-43.6	2.4	2.6	-50.1
Thailand		126,961	21.2	1704.7	202	19.5	2.7	20.7	16.7
Myanmar		21,303	89.0	347.3	30	650.0	0.4	7.8	67.0
Bangladesh		17,735	-55.5	143.5	118	-41.6	0.9	12.2	-36.1
Sri Lanka		8,698	1.0	407.3	181	-17.0	8.7	18.8	5.8
Maldives		5,412	-29.7	11122.1	3	-25.0	3.7	21.7	-22.2
Bhutan		2,280	56.5	3433.1	1	0.0	1.3	1.5	0.0
Nepal		2,066	-61.9	85.8	26	-59.4	1.0	7.0	-43.9
Timor-Leste		608	-46.1	551.4	1	-50.0	0.8	16.5	-23.5
DPR Korea		0	0.0	NA	0	0.0	NA	NA	NA
SEAR total		732,135	-14.0	NA	4,891	-27.0	NA	NA	NA

Source: WHO SEARO

8. Omicron

Based on the genomic sequencing results in February 2022, the predominant variant is Omicron (98.5% of samples tested). Currently the sub lineage BA.2 has a higher prevalence (84%) than other sub lineages.



Timeline of the emergence and displacement of different variants in Sri Lanka

Source: Allergy Immunology and Cell Biology Unit, Department of Immunology and Molecular Medicine, University of Sri Jayawardenepura