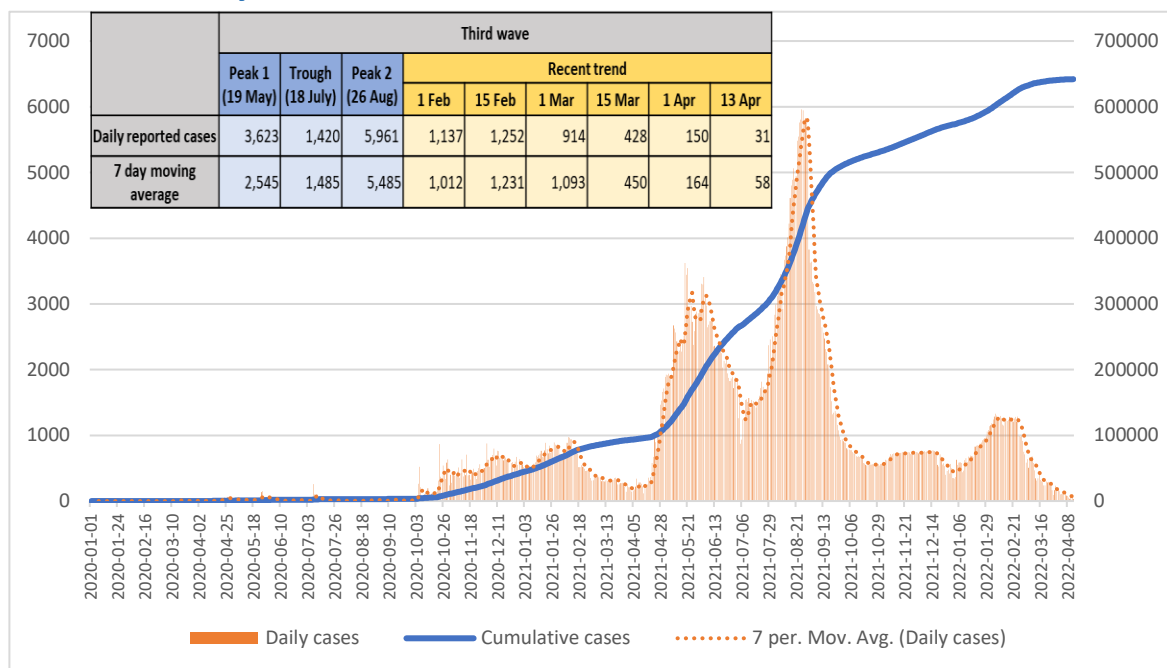




COVID -19 Situation Report

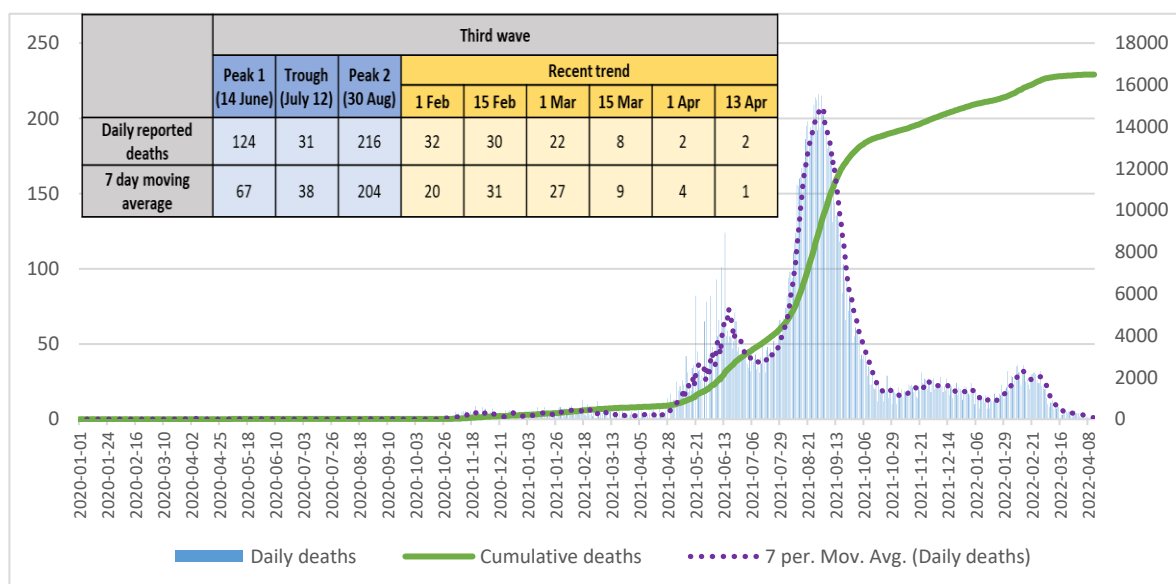
1. Daily cases and cumulative cases



Source: Ministry of Health -Daily reported cases. Data updated until 13 April 2022

- A total of 662,748 cases have been reported as of 13 April
- The number of daily cases reported over the past 14 days (31 Mar – 13 Apr) is 1,295 which is a 60% decrease compared to the previous 14-day period (17 - 30 Mar)
- The average weekly incidence over the past 14 days is 3.0 per 100,000 population
- The number of daily cases reported are now lower than the pre-3rd wave level

2. Daily deaths and cumulative deaths

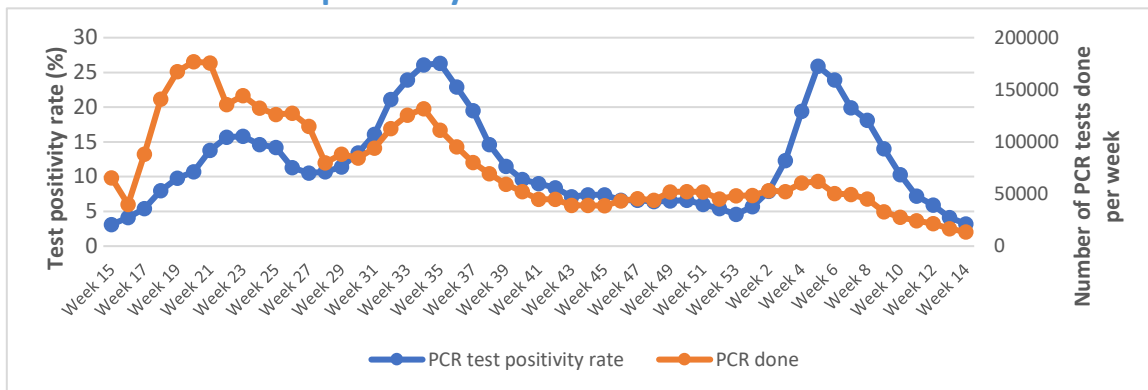


Source: Ministry of Health. Data updated until 13 April 2022

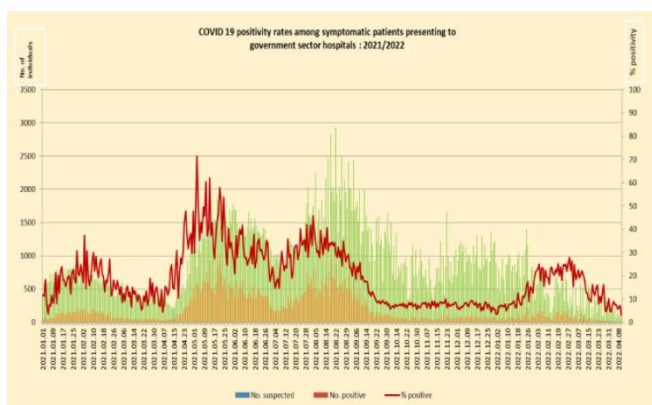
- A total of 16,494 deaths have been reported as of 13 April with 56% males. 76% of the deaths are in age group of 60+, while 22% is in the 30-60 years age group.
- The number of daily deaths reported over the past 14 days (31 Mar – 13 Apr) is 21 which is a 63% decrease compared to the previous 14-day period (17 - 30 Mar)
- The average weekly case fatality rate over the past 14 days is 0.05 per 100,000 population
- The number of daily deaths reported have declined to the pre-3rd wave level



3. Test positivity rate

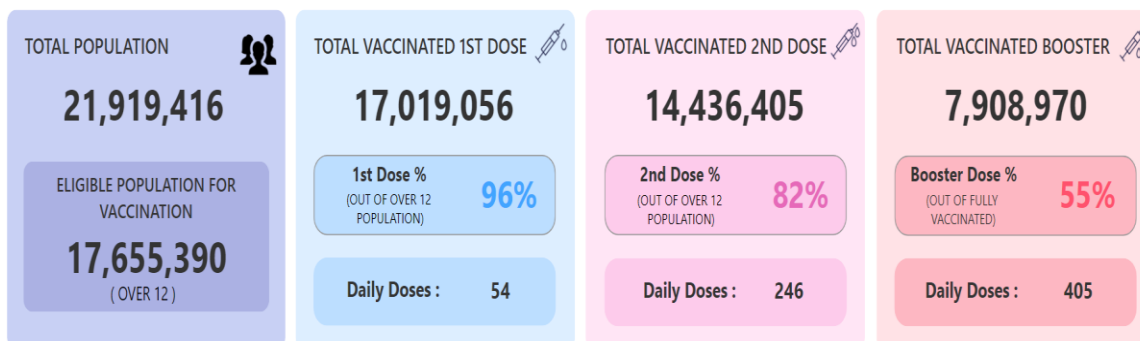


Source: Weekly PCR test positivity rate - National COVID-19 Surveillance System of Sri Lanka. Data updated until 10 April 2022



Source: Epidemiology Unit, accessed on 13 April 2022

4. Vaccination



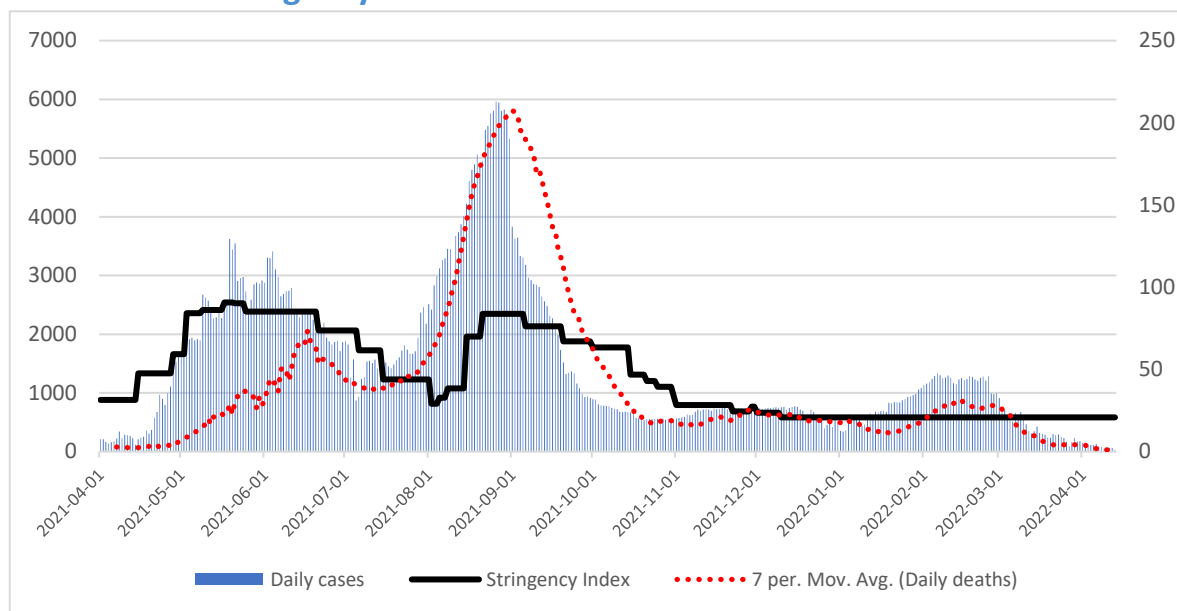
Source: <https://www.presidentsoffice.gov.lk/index.php/vaccination-dashboard/>. Accessed on 14 April 2022

- Weekly PCR test positivity rate has decreased since week 5 of 2022 and is currently 3.2%. Around 13,700 PCR tests were conducted during the week (70 PCR tests per 100,000 population per week). Further, Rapid Antigen Tests are also widely used for testing.
- Test positivity rate among patients who are having symptoms presenting to government hospitals tested using RAT and PCR is also showing a declining trend

- The accelerated vaccination effort has now covered 82% of the over 12 years age group with two doses and this corresponds to 65.9% of the total population
- A third dose (with Pfizer vaccine) has been administered to 7.9 million persons (36.1% of the total population and 55% of fully vaccinated). The number of third doses administered over the past 14 days (30 Mar – 12 Apr) is 36,243.



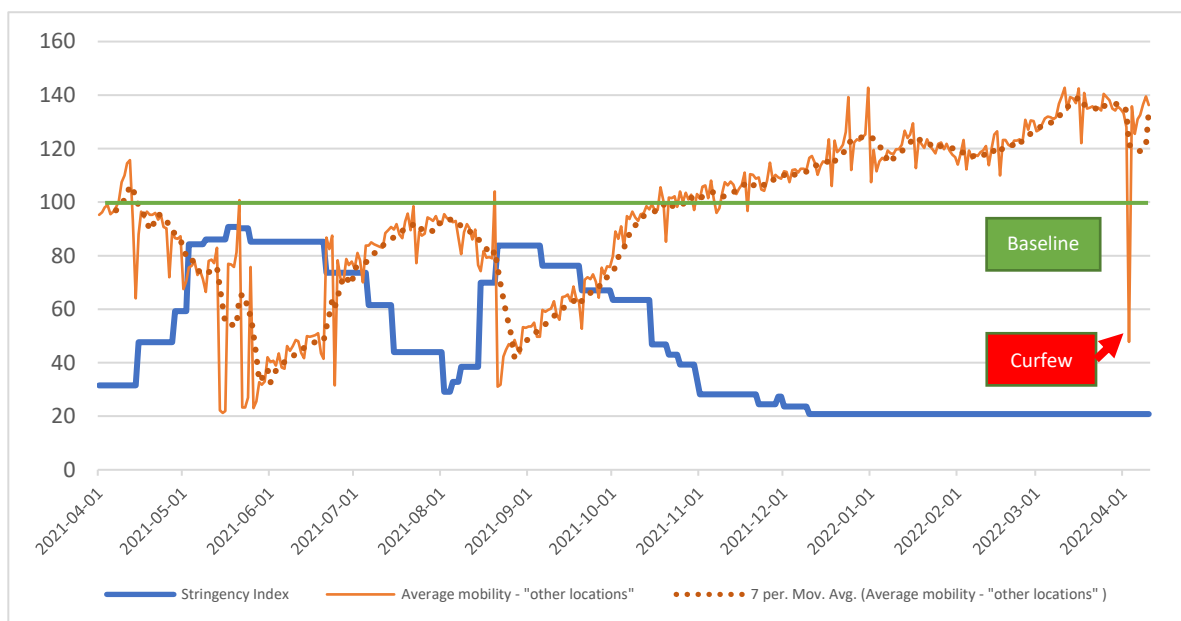
5. Stringency index



- The level of stringency continues to be low with most sectors are functioning at full capacity

Source: Oxford Stringency Index (SI) values are considered. Data until 21 June accessed from Oxford COVID Government Response Tracker; same methodology used for calculations of SI from 21 June onwards. Data updated until 14 April 2022.

6. Mobility



- The average mobility has been **above the baseline*** since mid-November 2021 (except on 3 April 2022 where island wide curfew was imposed) and is currently at 137% (10 April)

*A baseline day represents a normal value for that day of the week calculated based on the median value from the 5-week period Jan 3 – Feb 6, 2020

Source: Google Community Mobility data are considered. Data available until 10 April 2022



7. Regional situation *(Updated as of 7 April 2022)*

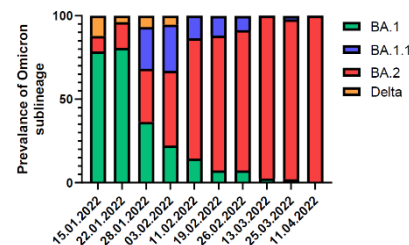
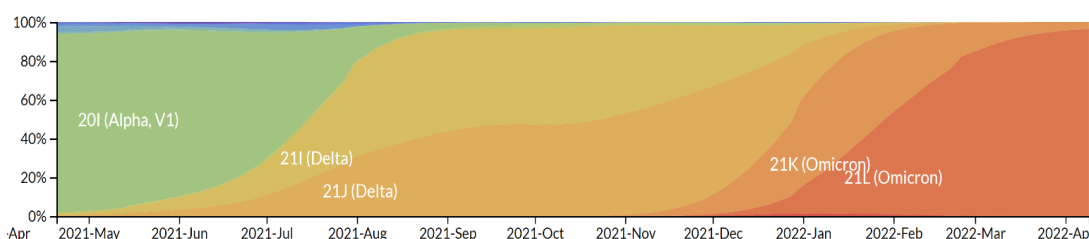
Country		New cases (last 7 days)	% change in new cases	New cases per 1M pop	New deaths (last 7 days)	% change in new deaths	New deaths per 1M pop	Test Positivity Rate (last 7DMA)	% change in TPR
Thailand		181,040	2.4	259.4	652	19.0	0.9	30.2	9.6
Indonesia		16,838	-40.8	6.2	464	-40.4	0.2	3.8	-32.1
Bhutan		8,474	122.5	1098.2	2	100.0	0.3	24.7	-51.8
India		7,710	-26.3	0.6	386	-91.4	0.0	0.2	-17.6
Sri Lanka		889	-31.7	4.2	13	-53.6	0.1	8.6	0.0
Myanmar		631	-58.8	1.2	4	100.0	0.0	1.1	-48.7
Bangladesh		363	-30.7	0.2	1	-75.0	0.0	0.9	-16.6
Maldives		220	-74.4	123.0	0	-100.0	0.0	NA	NA
Nepal		136	-0.7	0.5	0	0.0	0.0	0.5	-34.1
Timor-Leste		6	-64.7	0.5	0	0.0	0.0	1.0	-32.2
DPR Korea		0	0.0	NA	0	0.0	NA	NA	NA
SEAR total		216,307	-3.0	NA	1,522	-74.0	NA	NA	NA

Source: WHO SEARO

8. Omicron

- 16 samples were sequenced during the 4th week of March and 1st week of April from the community in Colombo. Omicron variant was detected in all the above samples. A total of 1091 Omicron cases have been sequenced to date.

Frequencies (colored by Clade)



Source: Allergy Immunology and Cell Biology Unit, Department of Immunology and Molecular Medicine, University of Sri Jayawardenepura

9. Other issues

- Health system recovery and full functioning of non-COVID-19 services are now further challenged by shortages in medicines and supplies due to the economic and foreign exchange crisis faced by the country. WHO is supporting the Ministry of Health to facilitate and coordinate immediate development partners support; and, plan for longer-term systems strengthening in the context of a prolonged pandemic and an unprecedented economic downturn.