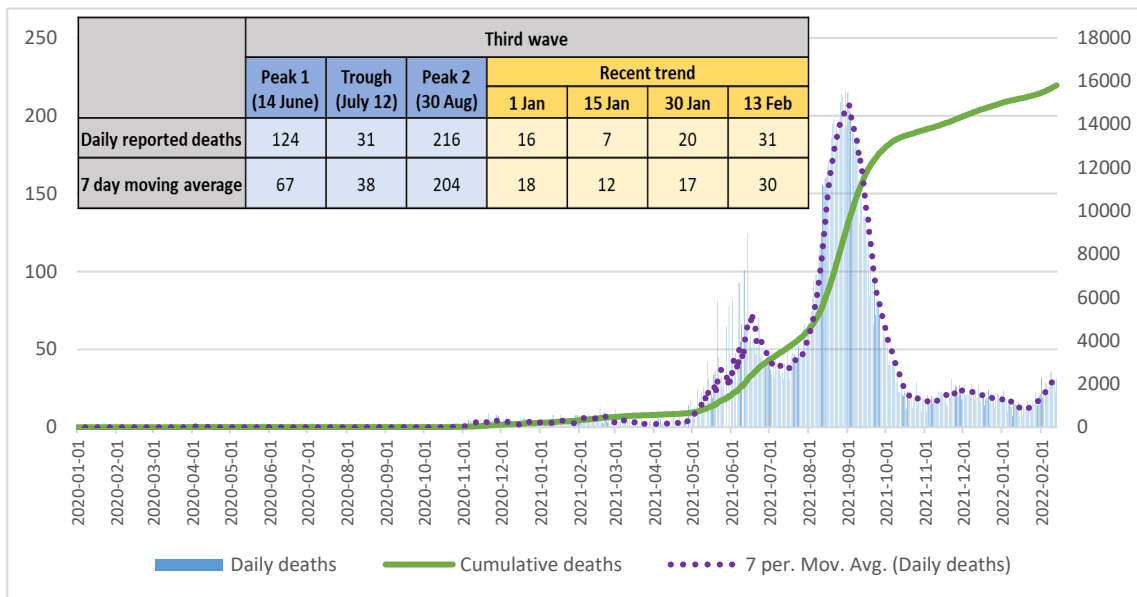




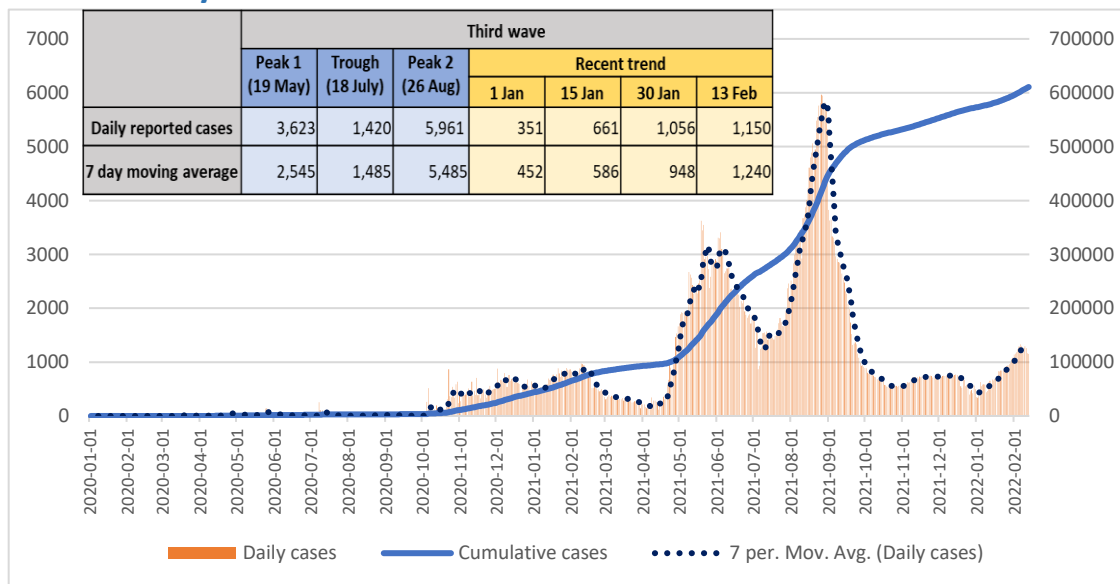
### COVID -19 Situation Report

#### 1. Daily deaths and cumulative deaths



- A total of 15,808 deaths have been reported as of 13 Feb with 56% males. 76% of the deaths are in age group of 60+, while 22% is in the 30-60 years age group.
- There is an increase in the 7-day average for daily reported deaths from 19 Jan (at 11 per day) onwards and is currently at 30 deaths per day
- The number of deaths reported over the past 14 days (31 Jan – 13 Feb) is 388 which is a 86% increase compared to the previous 14-day period (17 – 30 Jan)

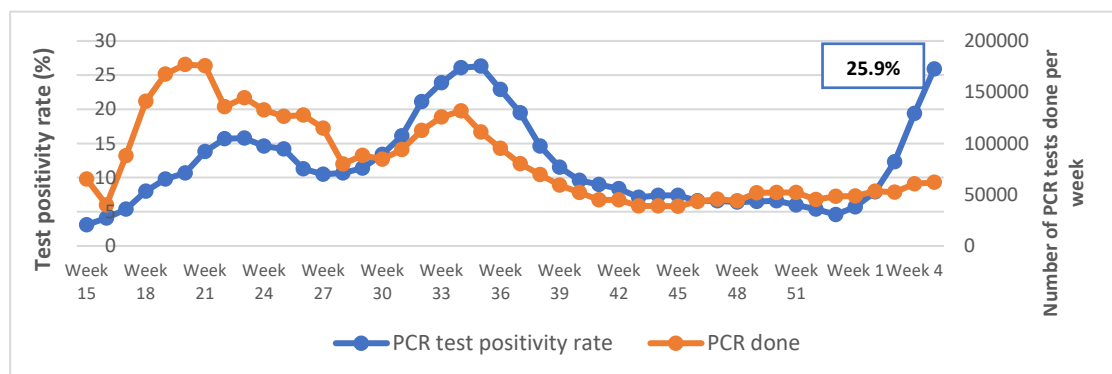
#### 2. Daily cases and cumulative cases



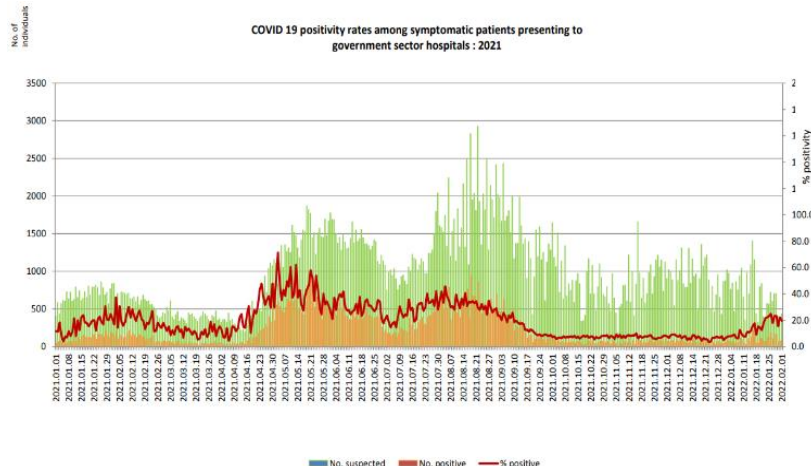
- A total of 628,116 cases have been reported as of 13 Feb
  - There is an increase in the 7-day average for daily reported cases from 12 January (560 per day) onwards and is currently 1,240 cases per day
  - The number of cases reported over the past 14 days (31 Jan – 13 Feb) is 17,099\* which is a 40% increase compared to the previous 14-day period (17 – 30 Jan)
- \*delayed reporting excluded



### 3. Test positivity rate

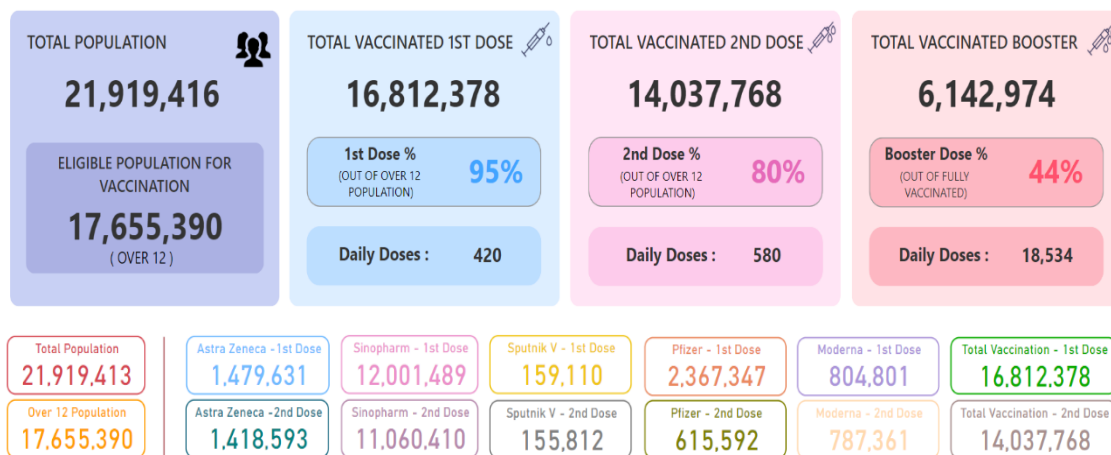


Source: Weekly PCR test positivity rate - National COVID-19 Surveillance System of Sri Lanka. Data updated until 6 February 2022



Source: Epidemiology Unit, Ministry of Health. Data updated until 12 February 2022

### 4. Vaccination



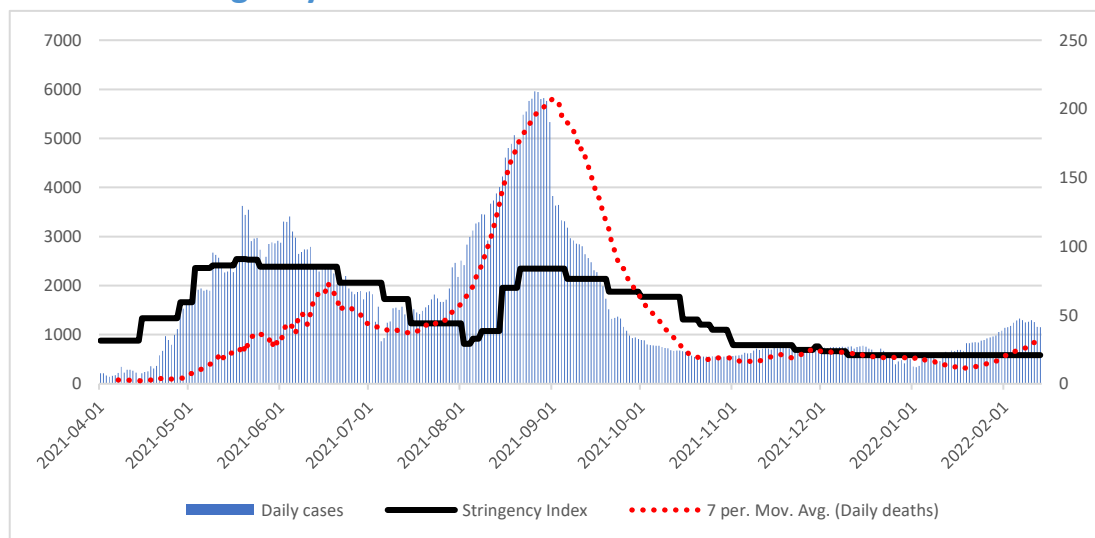
Source: <https://www.presidentsoffice.gov.lk/index.php/vaccination-dashboard/>. Accessed on 13 February 2022

- Weekly PCR test positivity rate has increased since the 1<sup>st</sup> week of 2022 (5.7%) and is now 25.9% (week 5). Around 62,000 PCR tests were conducted during the week. Further, Rapid Antigen Tests are also widely used for testing.
- COVID-19 positivity rates among symptomatic patients presenting to government sector hospitals has also increased during the same period

- The accelerated vaccination effort has now covered 80% of the over 12 years age group with two doses and this corresponds to 64% of the total population
- A third dose (with Pfizer vaccine) has been administered to 6.1 million persons (28% of the total population). The number of third doses administered over the past 14 days (31 Jan – 13 Feb) is 867,969 which is a 72% increase compared to the previous 14-day period (17 – 30 Jan)

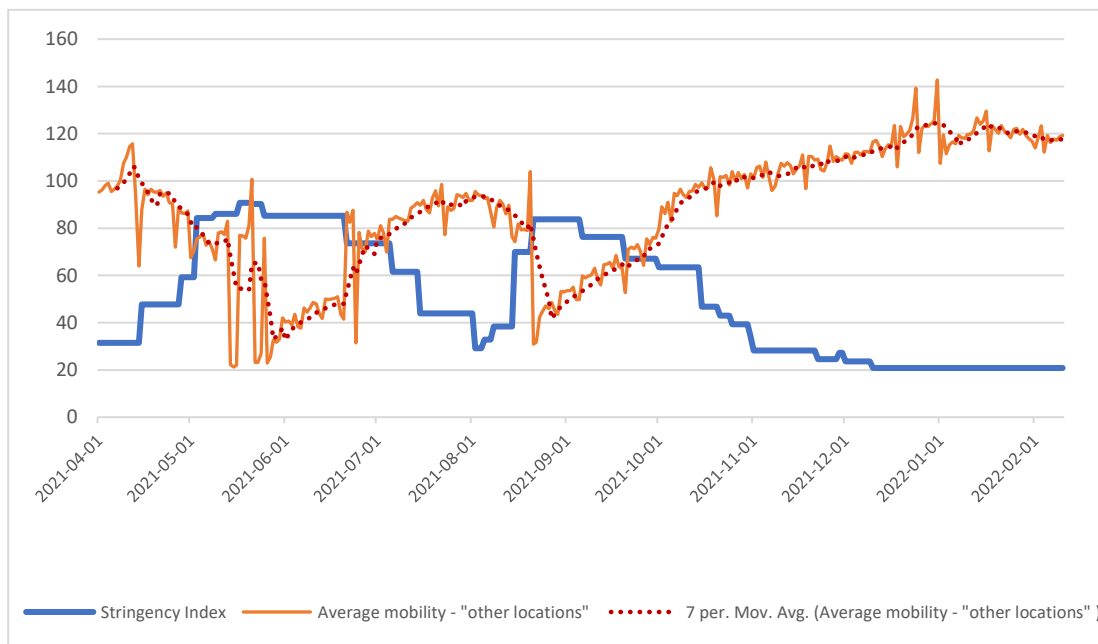


#### 5. Stringency index



Source: Oxford Stringency Index (SI) values are considered. Data until 21 June accessed from Oxford COVID Government Response Tracker; same methodology used for calculations of SI from 21 June onwards. Data updated until 13 February 2022.

#### 6. Mobility



Source: Google Community Mobility data are considered. Data available until 10 February 2022

- The level of stringency continues to be low.
- Schools are currently open but are on vacation due to the ongoing advanced level examinations. Day care centers and pre-schools are also open. Workplaces have been given permission to function as usual adhering to the COVID-19 precautionary measures. Currently there are no travel restrictions on persons travelling to Sri Lanka.
- The average mobility has been above the baseline (pre-COVID levels) since mid-November 2021 and is currently at 119% (10 Feb)



## 7. Regional situation *(Updated as of 10 February 2022)*

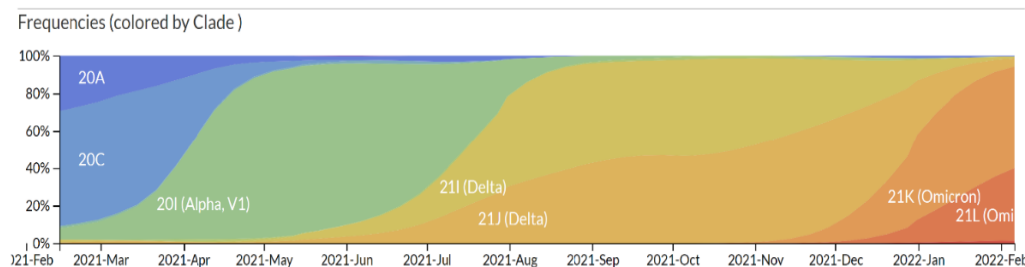
Country		New cases (last 7 days)	% change in new cases	New cases per 1M pop	New deaths (last 7 days)	% change in new deaths	New deaths per 1M pop	Test Positivity Rate (last 7DMA)	% change in TPR
India		870,112	-47.9	1120	7,820	35.3	5.0	10.4	-35.8
Indonesia		210,702	180.2	315	371	267.3	0.4	10.4	124.7
Thailand		69,905	23.5	825	135	5.5	1.9	13.2	4.6
Bangladesh		67,268	-29.9	563	245	45.0	1.1	26.0	-19.2
Maldives		12,355	-32.4	32582	8	33.3	11.1	33.1	-9.4
Nepal		11,041	-62.8	903	86	1.2	3.2	24.5	-29.6
Sri Lanka		9,663	11.5	415	183	28.0	6.8	13.2	21.8
Myanmar		3,161	57.3	35	0	0.0	0.0	1.5	-12.1
Bhutan		1,256	0.3	1690	0	-100.0	1.3	2.4	57.2
Timor-Leste		643	174.8	195	0	0.0	0.0	17.2	81.5
DPR Korea		0	0.0	NA	0	0.0	NA	NA	NA
SEAR total		1,256,106	-36.0	NA	8,848	38.0	NA	NA	NA

Source: WHO SEARO

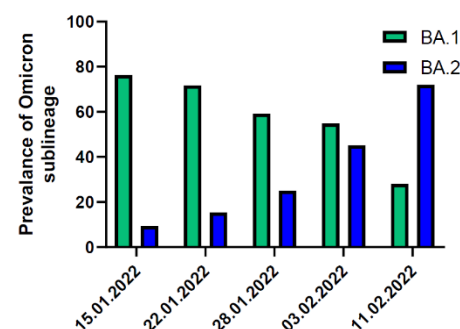
## 8. Omicron surge

The first case of Omicron from Sri Lanka was detected on 3 December 2021 and has since replaced the Delta variant as the predominant Variant of Concern in the country. Genomic sequencing results in late January and early February on 192 samples indicate the detection of Omicron in 185 samples (96.3%). The cumulative total of Omicron detected is 664. Currently the sub lineage BA.2 has a higher prevalence with its percentage increasing from 9% to 72% within the past 1 month. However, Sri Lanka has not recorded a significant Omicron spike in cases seen in other SEAR countries as of now.

### Timeline of the emergence and displacement of different variants in Sri Lanka



### Relative frequency of BA.1 compared to BA.2 in Sri Lanka



Source: Allergy Immunology and Cell Biology Unit, Department of Immunology and Molecular Medicine, University of Sri Jayawardenepura