

Coronavirus disease 2019 (COVID-19)

Data as reported by the Thai Ministry of Public Health



World Health
Organization

Thailand

22 June 2020

WHO Thailand Situation Report



3,151
Confirmed



58
Deaths



71
Hospitalized



3,022
Recovered

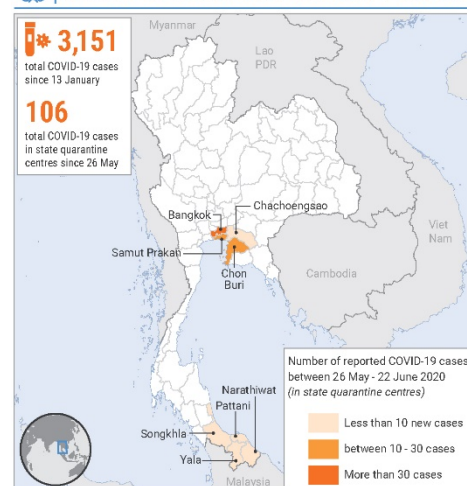


**THAILAND
SITUATION
UPDATE**

SPOTLIGHT

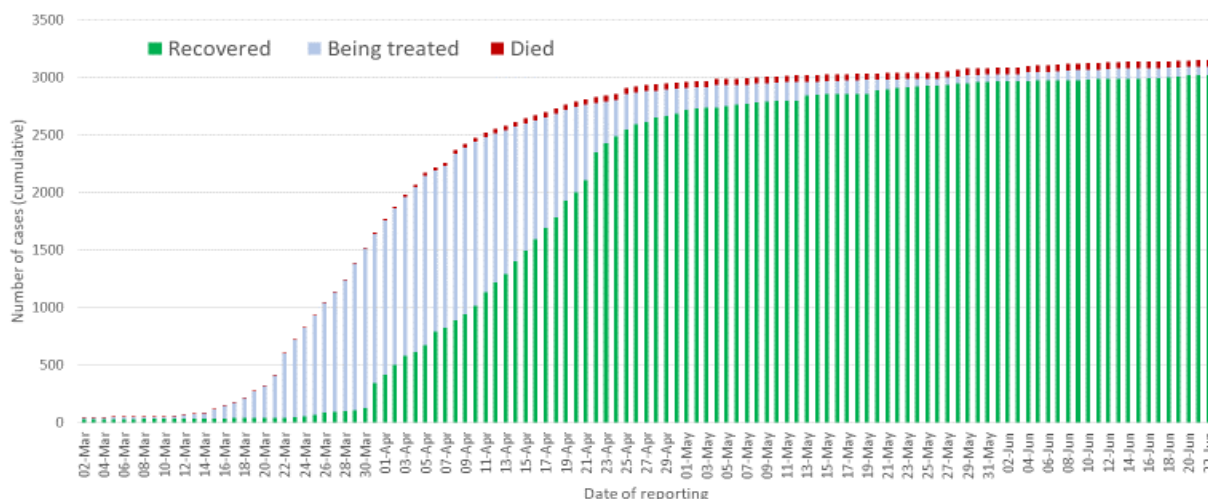
- On the 22nd of June 2020, three new cases of laboratory-confirmed COVID-19 were reported by the Ministry of Public Health. The total number of cases reported in Thailand is currently 3,151.
- Of these cases, about 96% (3,022) have recovered, 2% (58) have died and 2% (71) are receiving treatment.
- All three new cases are in Thai nationals currently in State Quarantine, who returned from India.
- No new deaths were reported today.
- In the past four weeks, all COVID-19 cases detected in Thailand have been in repatriated Thai nationals (there have been no reported cases due to local transmission). It is important that members of the public continue to follow all the recommended preventive measures including physical distancing, washing hands and avoiding touching the face, wearing masks in crowded places and adhering to respiratory etiquette by coughing only into a folded elbow.

COVID-19 cases over the last 4 weeks



Map Sources: Government of Thailand, UN Cartographic Section

COVID-19 cases in Thailand, by date of reporting



Source: MoPH, 22 June 2020

UPDATE FROM THE CENTRE FOR COVID-19 SITUATION ADMINISTRATION (CCSA):

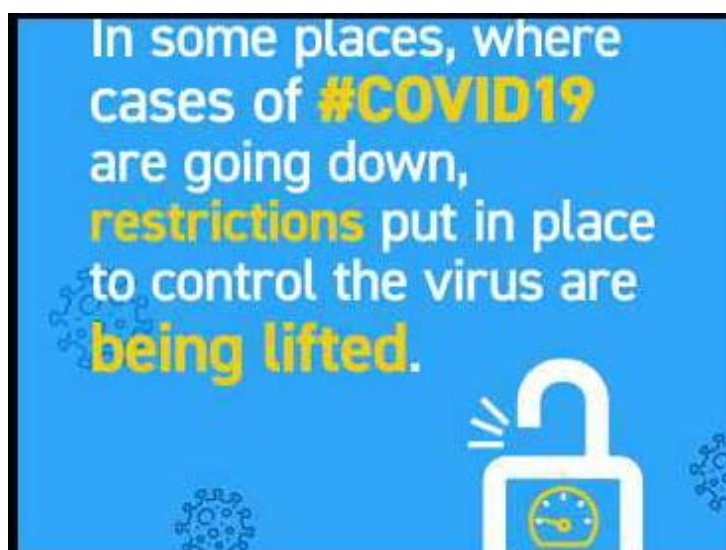
- The CCSA is considering whether to approve entry into Thailand of the following groups; 1.] business persons and investors, 2.] highly skilled labourers, 3.] registered migrants with family in Thailand and 4.] people seeking medical care.
- Possible arrangements are being explored for some tourists to enter Thailand through a 'travel bubble' policy.

UPDATE FROM THE MINISTRY OF PUBLIC HEALTH

A new normal measure for religious rites at buddhist temples

- Prior to the forthcoming Buddhist Lent, all frequently-touched surface need to be cleaned. Visitors should also be screened prior to entering and overcrowding should be avoided. Hand washing facilities or alcohol hand gel should be provided and visitors should wear masks. Food items offered to monks should also be prepared safely.
- Buddhist teachings, ordination of monks and other religious activities can now be organised, but physical distancing should be strictly implemented, especially in temples frequented by tourists.
- The Sangha Supreme Council of Thailand is considering how to apply the Thai Chana platform and mobile app for visitors entering each temple compound to effectively follow government policy and track possible COVID-19 transmission.

ADOPTING THE NEW NORMAL



The measures and restrictions put in place to slow the spread of COVID-19 have worked well, but have also been tough on everyone. The fact that we seem to have contained the first wave of COVID-19 in Thailand is very good news, but all must remain on high alert. Until there's an effective and accessible vaccine or effective treatment, everyone, everywhere, remains at risk.

This task of creating a "new normal" rests on every one of us. We will all need to adopt new ways of thinking, living and working. And everyone must all accept responsibility for protecting ourselves and work collectively to protect our families and our communities. We will need to find ways, together, to reduce the risk of infection in our homes, offices, markets, schools, stores, restaurants, public transport and places of worship to ensure they are safe places for us to live, work, learn and spend time.

Thailand is a team of millions of individuals; let's work together to create a new normal that everyone can be proud of!

WHAT WHO IS DOING TO PROVIDE SUPPORT TO THAILAND

WHO Thailand is in frequent direct contact with the Royal Thai Government through the Ministry of Public Health, sharing information on key developments, guidelines and scientific updates. WHO supports the wider UN response, including working with key partners and the Ministry of Public Health to support migrant populations in Thailand. WHO also provides information and advice to staff of the UN system in Thailand.



- The Thailand COVID19 situation report is available in Thai and English, please [visit](#).
- For regular updates on WHO's response in Thailand, please [visit](#).
- For global figures and technical advice from WHO, please [visit](#).

World Health Organization Country Office for Thailand
4th Fl., Permanent Secretary Bldg.3 Ministry of Public Health,
Nonthaburi Thailand, 11000

Media queries sethawebmaster@who.int and kanpirom@who.int



World Health
Organization
Thailand

For latest updates and resources, please visit:



www.who.int/thailand



[@WHOThailand](https://twitter.com/WHOThailand)



[WHOThailand](https://www.facebook.com/WHOThailand)



[WHOThailand](https://www.youtube.com/WHOThailand)