



UN-Water Global Analysis
and Assessment of Sanitation
and Drinking-Water

GLAAS Methodology

Module 2

GLAAS 2016/2017 cycle



World Health
Organization





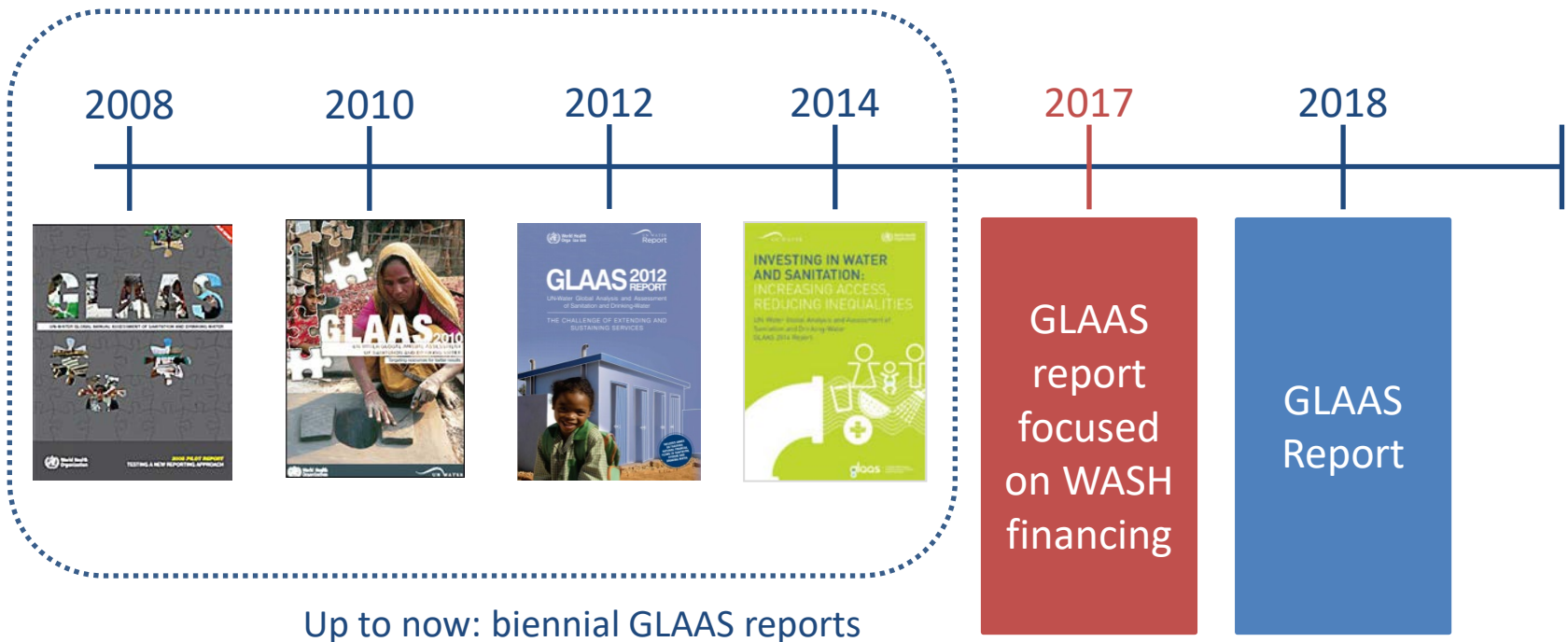
GLAAS Strategy 2016-2020

GLAAS entered a new strategy period in 2016

Proposed GLAAS Strategy:

- **Maintain breadth while increasing depth:** GLAAS reports will alternate between a thematic focus and a full report
- **Initial focus on WASH finance:** in the 2016 cycle, the finance module will be the key focus
- **Better response to country processes:** countries can select which modules to complete based on their priority issues

GLAAS Reports: A new direction

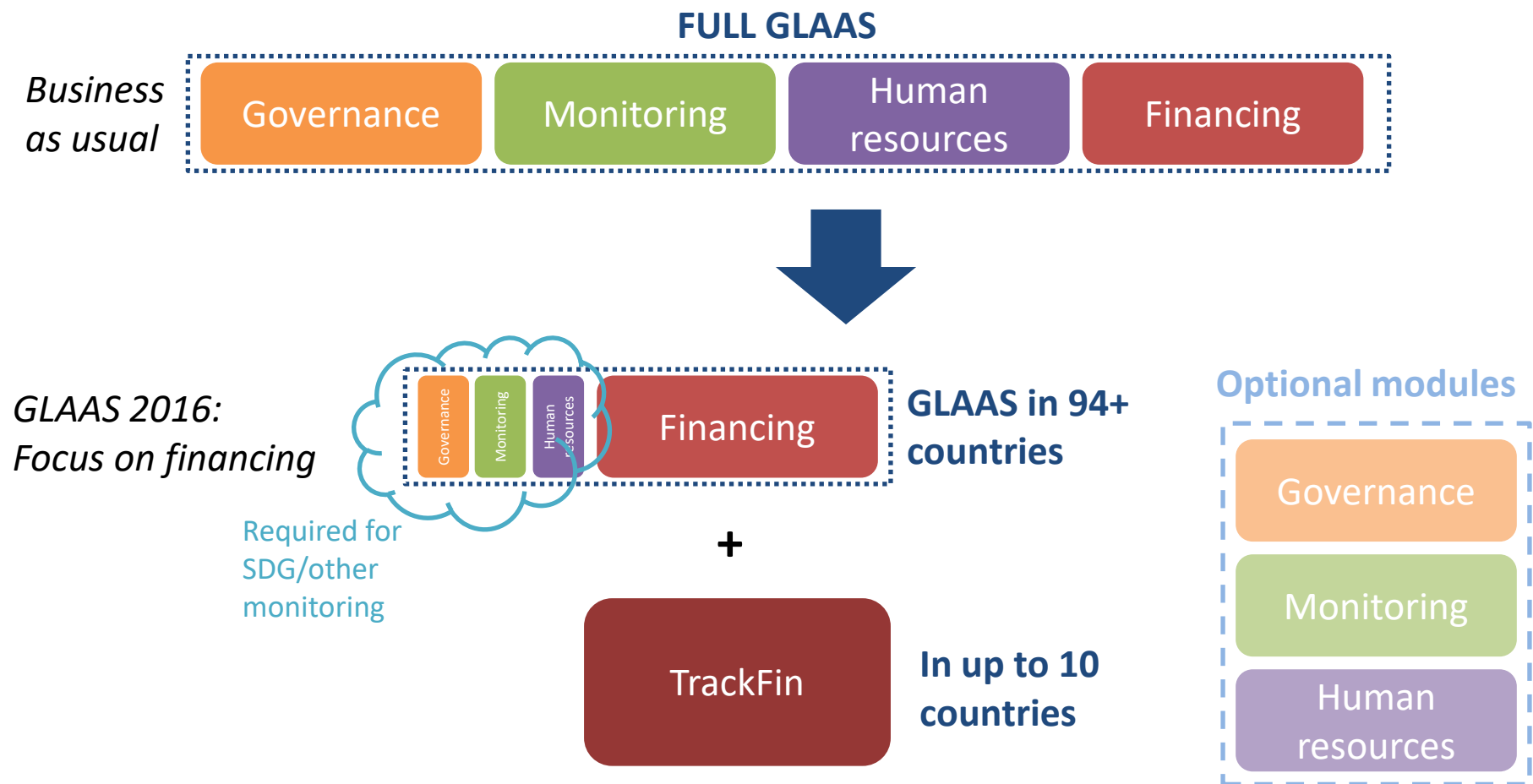




GLAAS Country Surveys in 2016

- **Two versions of the survey**
 - **Long form:** Full GLAAS survey covering all areas of the enabling environment (governance, monitoring, human resources and finance)
 - **Short form:** Selection of questions from other areas and mandatory section on finance
- **New participating countries** will fill out the long version
- Previous participants can fill out either, based on their needs

GLAAS Country Surveys in 2016





Country Survey

Short Version:

Governance

Section A

7 questions

Monitoring

Section B

7 questions

Human
resources

Section C

2 questions

Financing

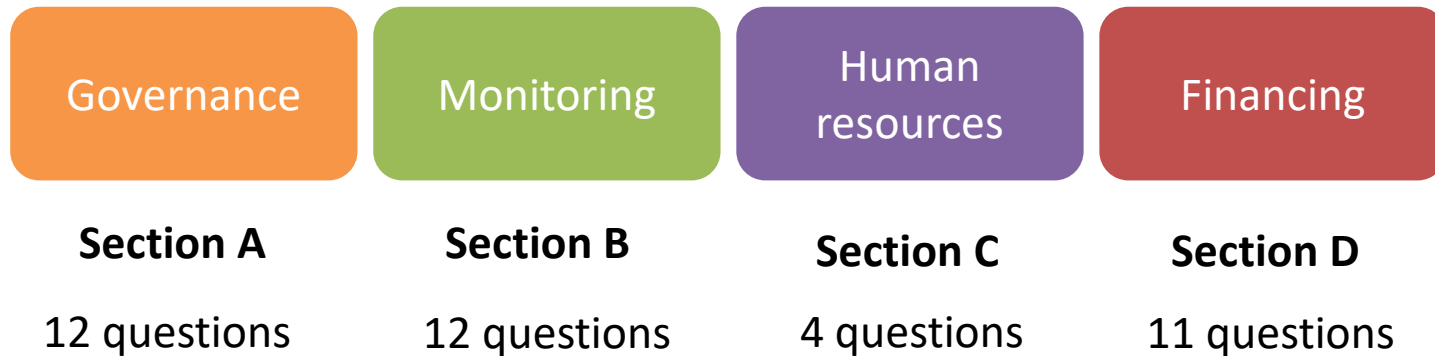
Section D

11 questions



Country Survey

Long Version:



Section D: Financing

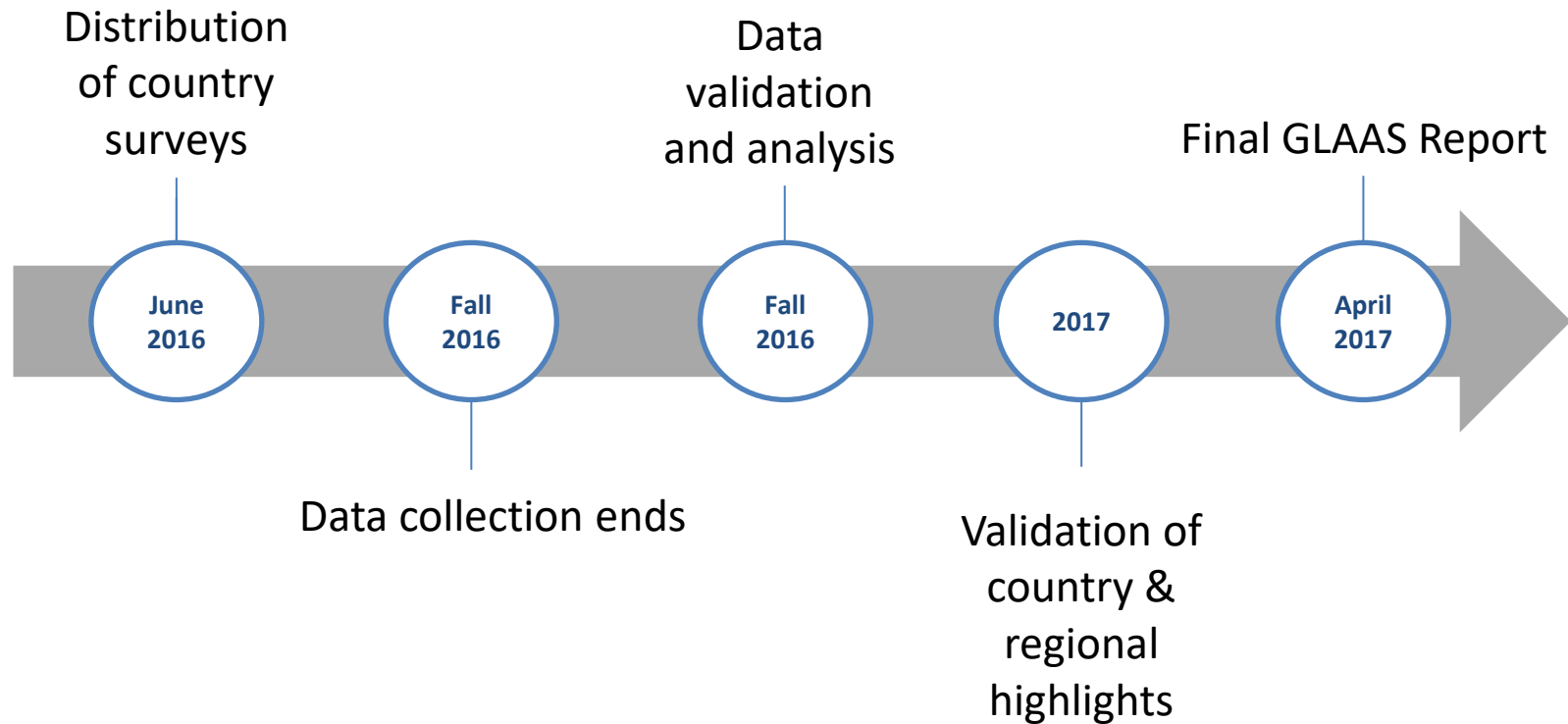
This section aims to explore the following:

- The processes in place to distribute financial resources
- How well allocated funds are distributed
- Source of financing
- Amount and sufficiency of funds
- Services funded

Section D: Financing

- **Section D** is the same for both long and short versions of the survey.
- 11 questions in total
- Guidance note at the start of Section D explains how to fill in

Timeline





UN-Water Global Analysis
and Assessment of Sanitation
and Drinking-Water

Thank you!

*For additional information or assistance please
contact glaas@who.int*



**World Health
Organization**

