

# Food safety across food chain

## Animal Production and Health

Kohei Makita

Professor of Veterinary Epidemiology

Rakuno Gakuen University, OIE Centre for Food Safety in Asia and Pacific



Food and Agriculture  
Organization of the  
United Nations



World Health  
Organization



World Food  
Programme



**Together we make food safe:**  
One Health approach - 3 june 2021



# Outline

- Hazards in animal-source food production
- Ensuring safety of animal-source foods during production/processing phase
- OIE as standard setting organization



Food and Agriculture  
Organization of the  
United Nations



World Health  
Organization



UN  
environment  
programme



OIE  
WORLD ORGANISATION  
FOR ANIMAL HEALTH



World Food  
Programme



SUSTAINABLE  
DEVELOPMENT  
GOALS

**Together we make food safe:**  
One Health approach - 3 june 2021



# Hazards in animal-source food production

Farm

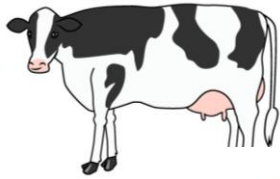
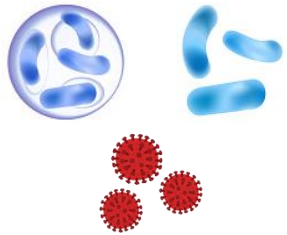


Processing



Distribution

Infections with zoonotic agents



Veterinary drugs, hormones

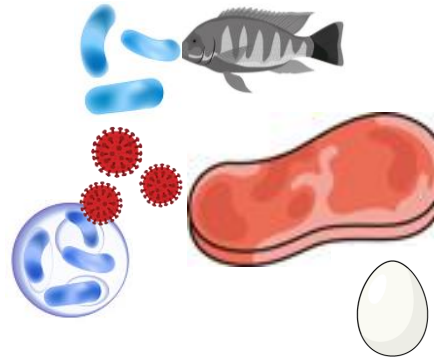


Molded feeds



Eg.  
*Salmonella*  
*Campylobacter*

Infected products, contamination during processing

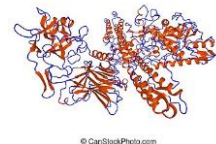


Antimicrobial resistant bacteria, drug residue



Ponnoose, Lynn. JAMA 2012.

Toxins



Eg.  
*Aflatoxin*

\*Many toxins are heat-resistant



Food and Agriculture  
Organization of the  
United Nations



World Health  
Organization



UN  
environment  
programme



WORLD ORGANISATION  
FOR ANIMAL HEALTH



World Food  
Programme



SUSTAINABLE  
DEVELOPMENT  
GOALS

Together we make food safe:  
One Health approach - 3 june 2021



# Ensuring safety of animal-source foods during production phase

## Farm

### 1. Herd health management

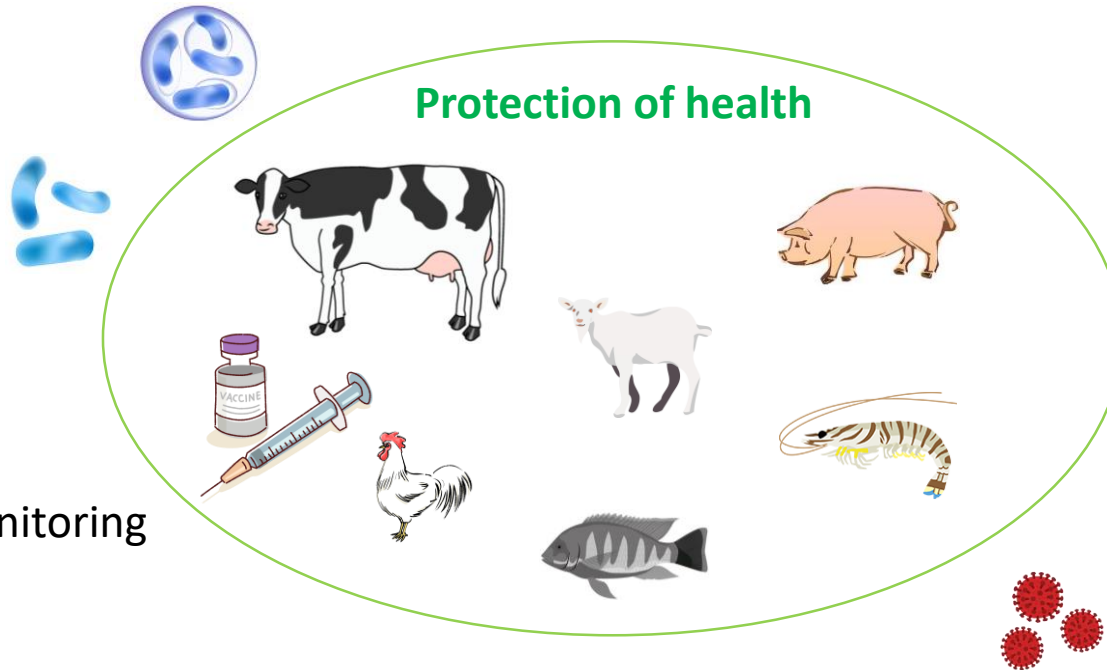
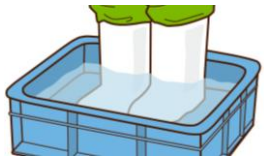
- Regular health check of animals
- Farm biosecurity

### 2. National disease control

- Surveillance system
- Laboratory capacity
- Vaccination campaign

### 3. Veterinary drug use

- Prudent use of veterinary drugs
- Setting standards such as withdrawal period



Ponnoose, Lynn. JAMA 2012.

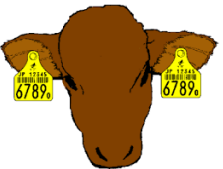
### 4. Feed quality control

- Setting standards
- Surveillance and monitoring



### 5. Traceability

- Establishing a system of traceability
- Connecting farm to fork



Food and Agriculture  
Organization of the  
United Nations



World Health  
Organization



UN  
environment  
programme



WORLD ORGANISATION  
FOR ANIMAL HEALTH



World Food  
Programme



SUSTAINABLE  
DEVELOPMENT  
GOALS

**Together we make food safe:**  
One Health approach - 3 june 2021

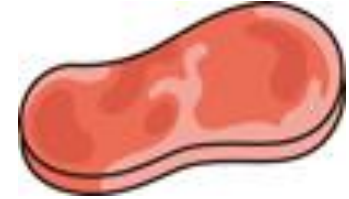
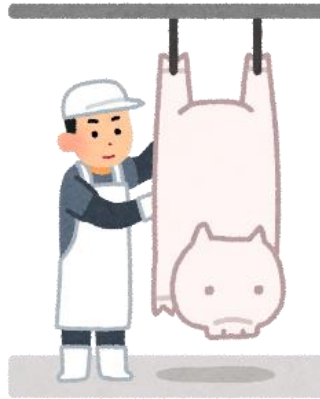


# Ensuring safety of animal-source foods during processing phase

## Processing

### 1. Slaughterhouse

- Clinical examination
- Inspection of carcass
- Hygienic handling of carcass
- Laboratory analysis
- Collaboration with veterinary authority



### 2. Processing plants

- Quality check of primary products
- Hazard Analysis Critical Control Point (HACCP)
- Collaboration with veterinary authority



### 3. Traceability

- Connecting farm to fork



Food and Agriculture  
Organization of the  
United Nations



World Health  
Organization



UN  
environment  
programme



WORLD ORGANISATION  
FOR ANIMAL HEALTH



World Food  
Programme



SUSTAINABLE  
DEVELOPMENT  
GOALS

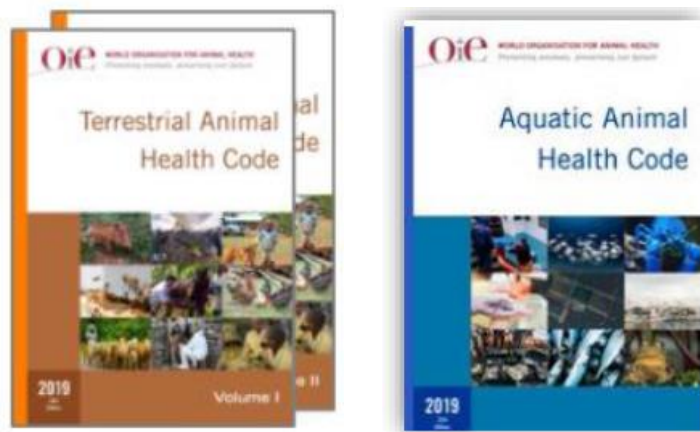
**Together we make food safe:**  
One Health approach - 3 june 2021





# OIE as standard setting organization

- Terrestrial Animal Health Code and Aquatic Animal Health Code as bases of national legislation
- OIE National Focal Points of Animal Production Food Safety
  - Standard setting
  - Implementation
- OIE Collaborating Centre for Food Safety
  - Training/ seminar
  - Networking OIE National Focal Points



Food and Agriculture  
Organization of the  
United Nations



World Health  
Organization



UN  
environment  
programme



WORLD ORGANISATION  
FOR ANIMAL HEALTH



World Food  
Programme



SUSTAINABLE  
DEVELOPMENT  
GOALS

**Together we make food safe:**  
One Health approach - 3 june 2021





Thank you for your attention!

